

2024 annual report to the Community

# Risdon Park South Kindergarten

Risdon Park South Kindergarten number: 6662

Partnership: Pirie



Preschool director:

Andrea Tyler

*Andrea Tyler* Signature

Date of endorsement:

11/02/2025



# Context Statement

Information about Risdon Park South Kindergarten is available on the centres website, as well as the Australian Children's Education and Care Quality Authority (ACECQA) website.

## Governing Council Report

The 2024 governing council consisted of a small but dedicated group of staff and parents who actively met throughout the course of the year, to be a part of the continued and ongoing growth of the kindergarten community.

In 2024 the governing council roles were shared amongst members, with parents joining with the midyear intakes for kindergarten. This gave members the opportunity to engage in different roles within the group that they might not normally engage in otherwise.

The meetings were structured to cover a range of corresponding topics that included: Discussing site policies and procedures, safety plans, risk assessments, budget, fundraisers to support the kindy, feedback & future planning for students learning experiences, family engagement & actions to further improve kindy facilities.

Over the course of the year the governing council ran many successful fundraisers that contributed to the purchase of new furniture, activities & equipment for the kindergarten and for the students to enjoy. Fundraisers for the year included: Easter Raffle, Jolly Soles Sock Fundraiser, Kindergarten Disco, Kytons Winter Warmer, Picture Products, 2024 Tea Towel, Domino's Doughraiser & Christmas Raffle.

Throughout the year, the Kindergarten visited with Lealholme residents which was initially funded through a grant received from SA Power Network. Its success was often discussed and reflected on by students, families and staff and continued with the Kindergarten funding this for the remainder of the year. It would be rewarding to see if there may be any future grants on offer that could be applied for in 2025, to continue the positive relationship that has been built with Lealholme residents and the Kindergarten over this time.

As a team, the Governing Council would like to say a big thank you to all the staff for their ongoing dedication to our children and the quality of their learning experiences that you continue to provide for them all. Anyone who has had young children within a Kindergarten setting knows how special this year of learning is, with the care and range of experiences offered to them throughout this time. As parents, it is a wonderful experience to be involved in this, no matter how big or small and being a part of the Governing Council contributes to some of these successes. We hope 2025 brings many more happy and heartfelt experiences for the new and ongoing students that the new members can also take part & share joy in too.

# Preschool Attendance

	Term 1	Term 2	Term 3	Term 4
2021 centre		95.9%	81%	94.9%
2022 centre	87.9%	88.6%	64.9%	74.7%
2023 centre	92%	79.2%	87%	88.6%
2024 centre	82.1%		77.9%	

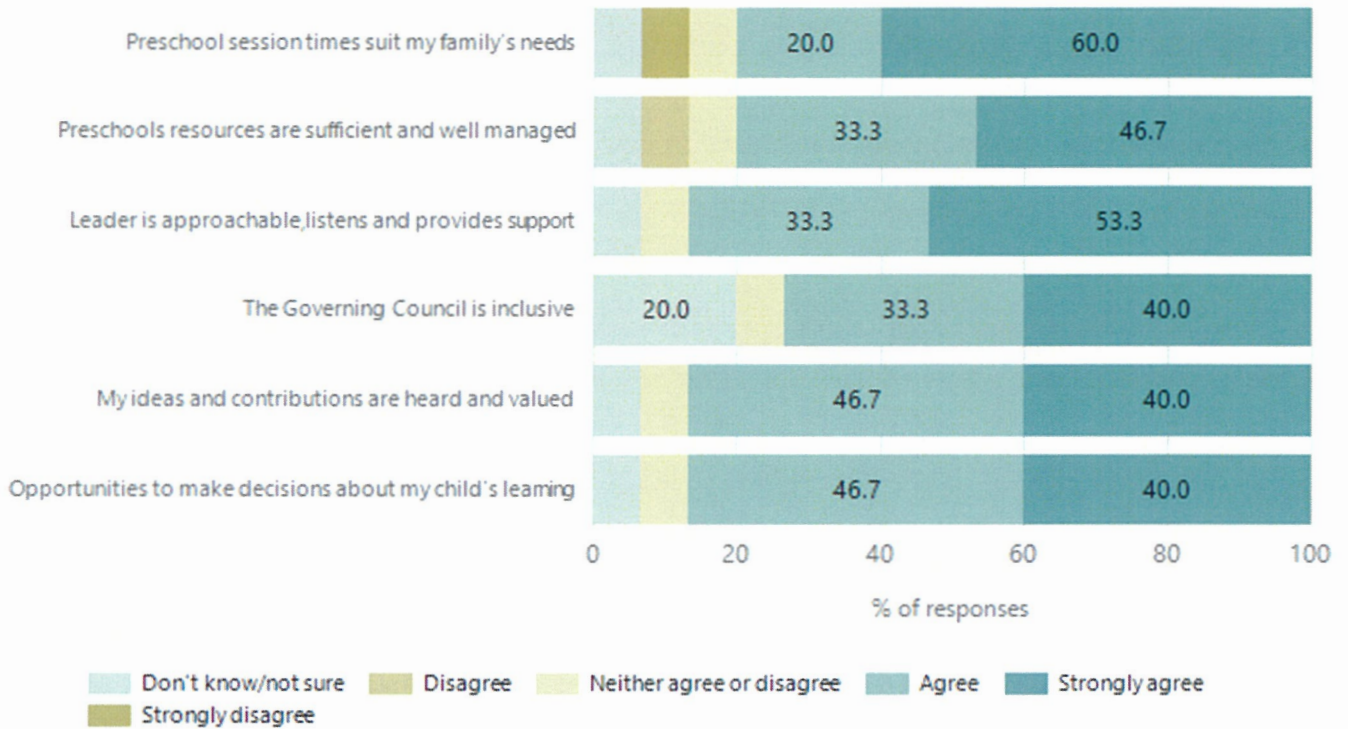
Based on attendances recorded in the two-week reference period each term. Data for eligible enrolments as described in the department's Enrolment policy. Attendance rates may differ to previous reporting with the transfer from calculations based on deemed attendance to actual attendance using booked hours divided by attended hours. Data Source: Department for Education Attendance Data, Semester 1 Report 2024. A blank cell indicates there were no students enrolled.

## Attendance Comment

In South Australia, preschool attendance is not compulsory, but it is strongly encouraged. Preschool gives children the best opportunity to develop skills, which prepare them for school. These benefits include establishing positive routines and habits, friendships and connections as well as developing communication, problem-solving and creative skills. All children are entitled to access a preschool program over 4 terms the year before they start school.

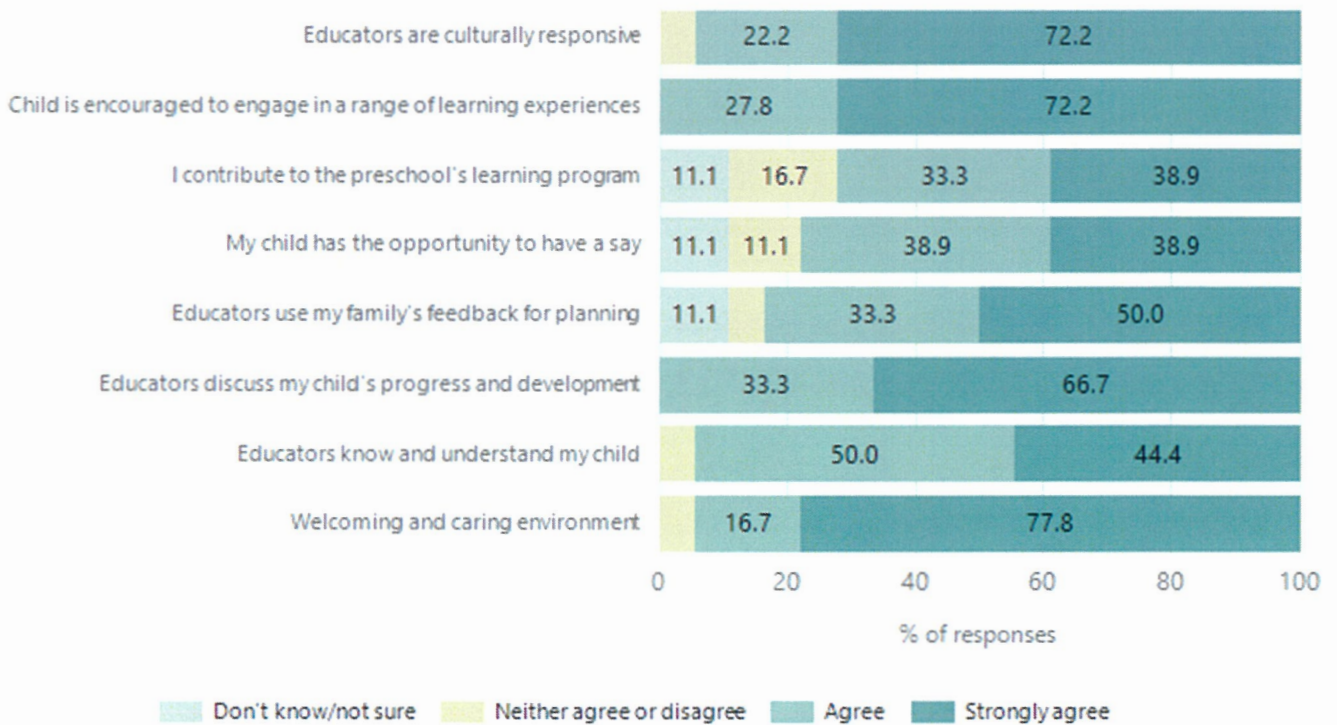
# Preschool Family Opinion Survey

## Governance, Leadership and Management



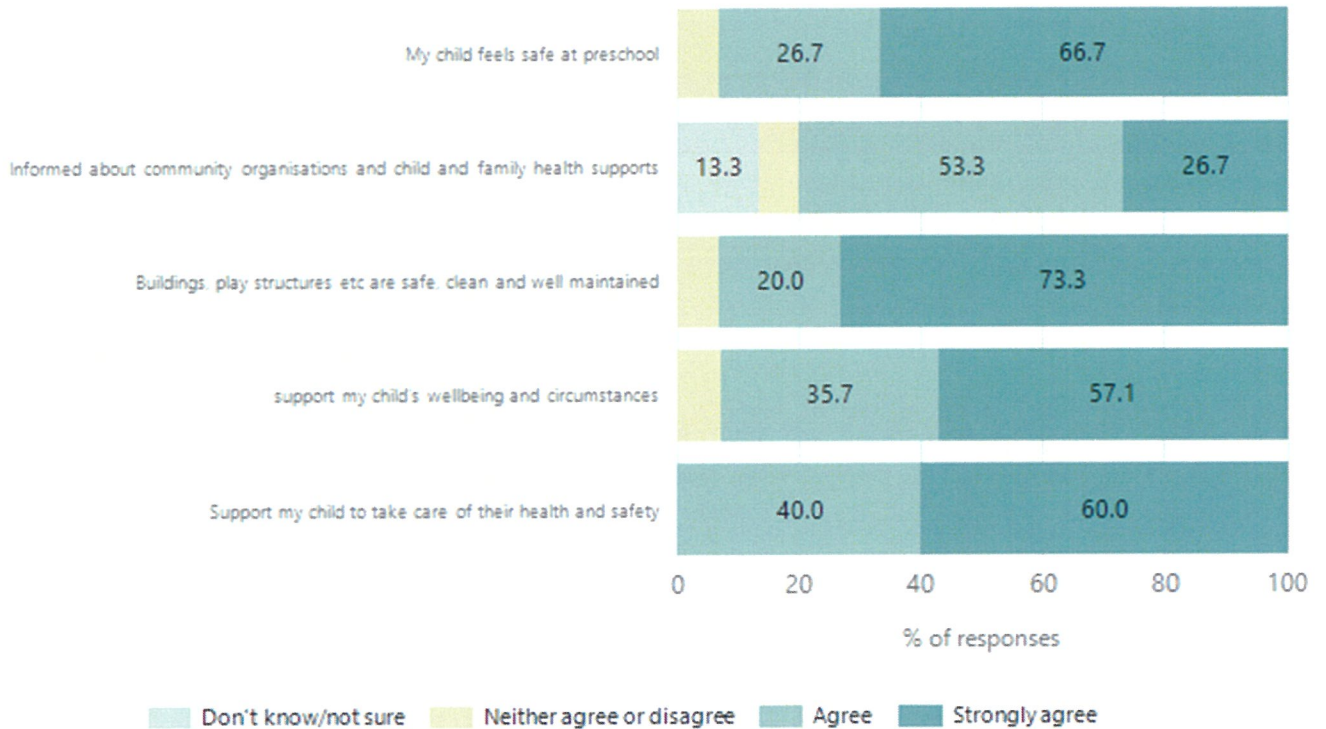
Data Source: 2024 Department for Education Preschool Family Opinions Survey, Term 3 2024.

## Quality of Teaching and Learning



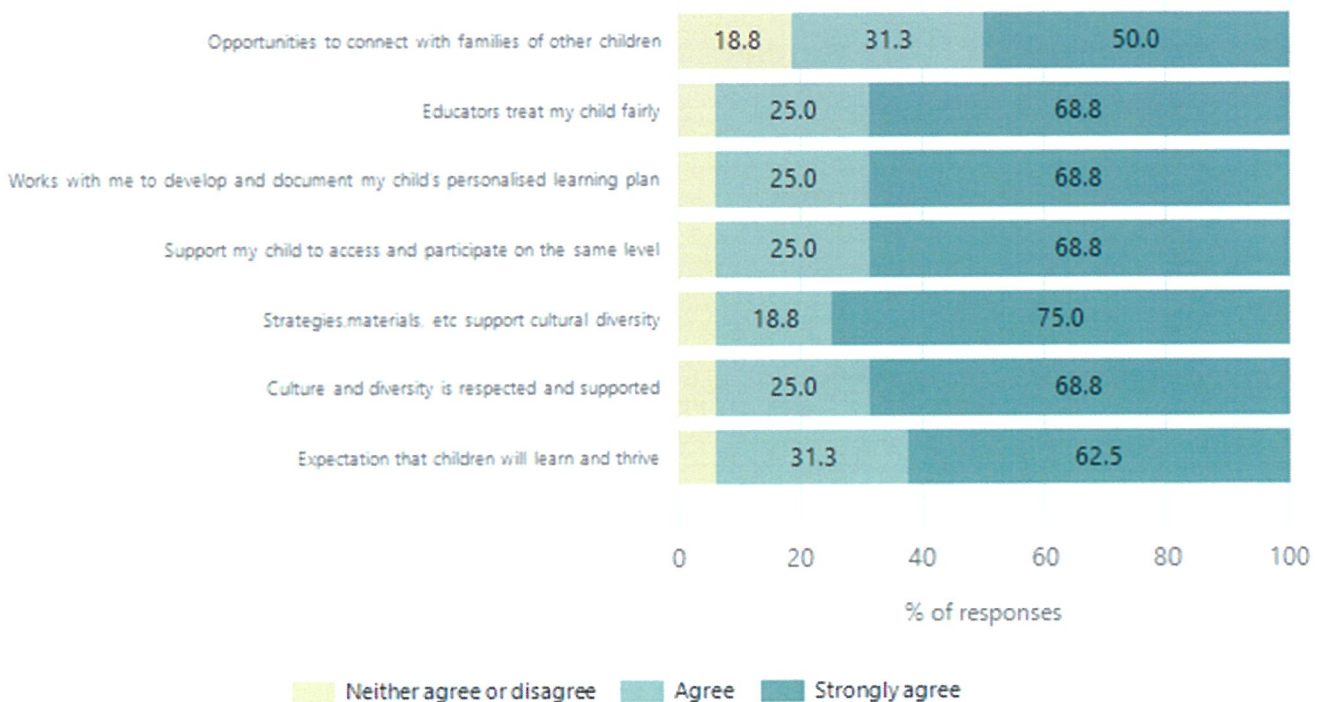
Data Source: 2024 Department for Education Preschool Family Opinions Survey, Term 3 2024.

## Safety, Health and Wellbeing



Data Source: 2024 Department for Education Preschool Family Opinions Survey, Term 3 2024.

## Support and Inclusion



Data Source: 2024 Department for Education Preschool Family Opinions Survey, Term 3 2024.

## Destination Schools

Feeder Schools (Site number - Name)	2022	2023	2024
0363 - Port Pirie West Primary School		3.9%	
0685 - Risdon Park Primary School	32.6%	23.5%	29.1%
0980 - Airdale Primary School	4.7%	5.9%	5.5%
8021 - St Mark's College:Benedict Campus			9.1%
9039 - Mid North Christian College	7.0%	11.8%	14.6%
9999 - Unknown	53.5%	54.9%	40.0%

Note: The data is collected in term 3. It does not reflect actual schools enrolled in by existing preschool children. A blank cell indicates there was no data for students enrolled.

Data Source: Department for Education Destination Data Report, 2024.

# Highest Qualifications held by the teaching workforce and workforce composition

All teachers at this school are qualified and registered with the SA Teachers Registration Board.

Qualification Level	Number of Qualifications
Bachelor's degrees or Diplomas	3

Data Source: Data extracted from Mandatory Workforce Information Collections as on the last pay date of June 2024. As self-reported by staff in the system.

Please note: Data includes staff who are Actively employed and on extended paid leave. Please note only the highest qualification of the Teaching staff is reported. Excludes any number of other certifications earned.

## Workforce composition including indigenous staff

	Teaching Staff		Non-Teaching Staff	
	Indigenous	Non-Indigenous	Indigenous	Non-Indigenous
Full-Time Equivalents	0.0	2.8	0.0	1.3
Persons	0.0	3.0	0.0	2.0

Data Source: Data extracted from Mandatory Workforce Information Collection as on the last pay date of June 2024.

Please note: Data includes staff who are actively employed and on extended paid leave. "Indigenous category" is self-reported by staff in the system.

## Financial Statement

Funding Source	Amount
Grants: State	\$493,376.82
Grants: Commonwealth	
Parent Contributions	\$14,966.34
Fund Raising	\$4,841.23
Other	\$132

Data Source: School supplied data.