

2024 annual report to the Community

Port Pirie Community Kindergarten

Port Pirie Community Kindergarten number: 6659

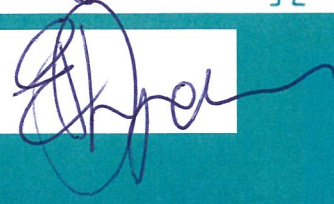
Partnership: Pirie

SARAH TAYLOR 

Paige Wellgreen-~~PA~~Wellgreen 



Preschool director:

Emma Thompson-Wilton 

Date of endorsement:

25/03/2025



Context Statement

Information about Port Pirie Community Kindergarten is available on the centres website, as well as the Australian Childrens Education and Care Quality Authority (ACECQA) website.

Governing Council Report

Dear Committee Members,

I would like to begin by expressing my sincere gratitude to all of you for your dedication and hard work throughout the year. It has been a privilege to serve as the Chair of the Governing Council for Port Pirie Community Kindergarten, and I truly appreciate the time and effort each of you has contributed to the success of our kindergarten community.

During our time on the council, we have had the opportunity to participate in several important initiatives and events that have helped strengthen the foundation of our kindergarten. The highlights of 2024 have been our involvement in fundraising activities such as the bowls night, the commemorative plate making and the implementation of Breakfast Club each morning and the float in the Christmas Pageant. Thanks to the collective effort of our committee, we have raised valuable funds that have been used to improve resources and our initiatives have implemented strategies to enhance the learning environment, and regulation of the children.

Additionally, we were fortunate to contribute to the development of risk assessment procedures. Working collaboratively with the team, we carefully assessed and implemented practices that help ensure the safety and well-being of the children, staff, and visitors. This work has provided a solid foundation for maintaining a secure environment, and we are proud of the strides we've made in this area.

We have also participated in the review of several key policies that are crucial for the smooth operation of the kindergarten. By helping to refine and update these policies, we've taken steps to ensure that we are not only compliant with regulations but also maintaining high standards for the benefit of the children and their families.

A special thank you must go to the wonderful educators who work with the children every day. Your passion, commitment, and care

truly shine through in all you do. It has been a joy working alongside such a dedicated team, and we have enjoyed every moment of our time here. Your positive impact on the children's development is invaluable, and it has been a pleasure to see the growth and progress that has been made throughout the year.

As some of us continue our journey on the Governing Council, it is time for some of us to step down from our roles, we wish Port Pirie Community Kindergarten and its entire community the very best in 2025. We are confident that the hard work and dedication of everyone involved will continue to make a positive difference in the lives of the children who attend. Thank you again for the opportunity to contribute, and we look forward to seeing all the wonderful things the kindergarten will achieve in the future.

Warm regards,
The Governing Council of 2024
Port Pirie Community Kindergarten

Preschool Attendance

	Term 1	Term 2	Term 3	Term 4
2021 centre		72.8%	81.2%	80.2%
2022 centre	77.4%	74.8%	79.2%	69.8%
2023 centre	86.4%	75.9%	83.5%	85.7%
2024 centre	81.4%		72.7%	

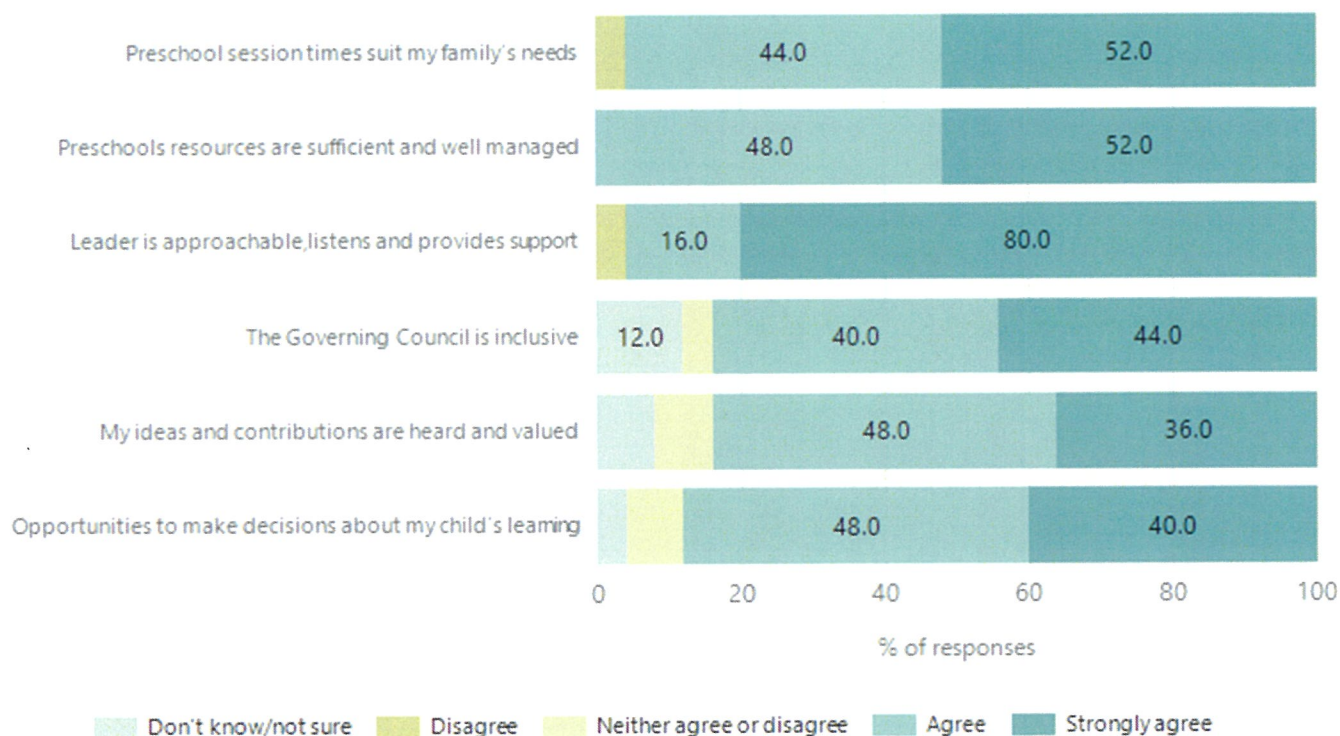
Based on attendances recorded in the two-week reference period each term. Data for eligible enrolments as described in the department's Enrolment policy. Attendance rates may differ to previous reporting with the transfer from calculations based on deemed attendance to actual attendance using booked hours divided by attended hours. Data Source: Department for Education Attendance Data, Semester 1 Report 2024. A blank cell indicates there were no students enrolled.

Attendance Comment

In South Australia, preschool attendance is not compulsory, but it is strongly encouraged. Preschool gives children the best opportunity to develop skills, which prepare them for school. These benefits include establishing positive routines and habits, friendships and connections as well as developing communication, problem-solving and creative skills. All children are entitled to access a preschool program over 4 terms the year before they start school.

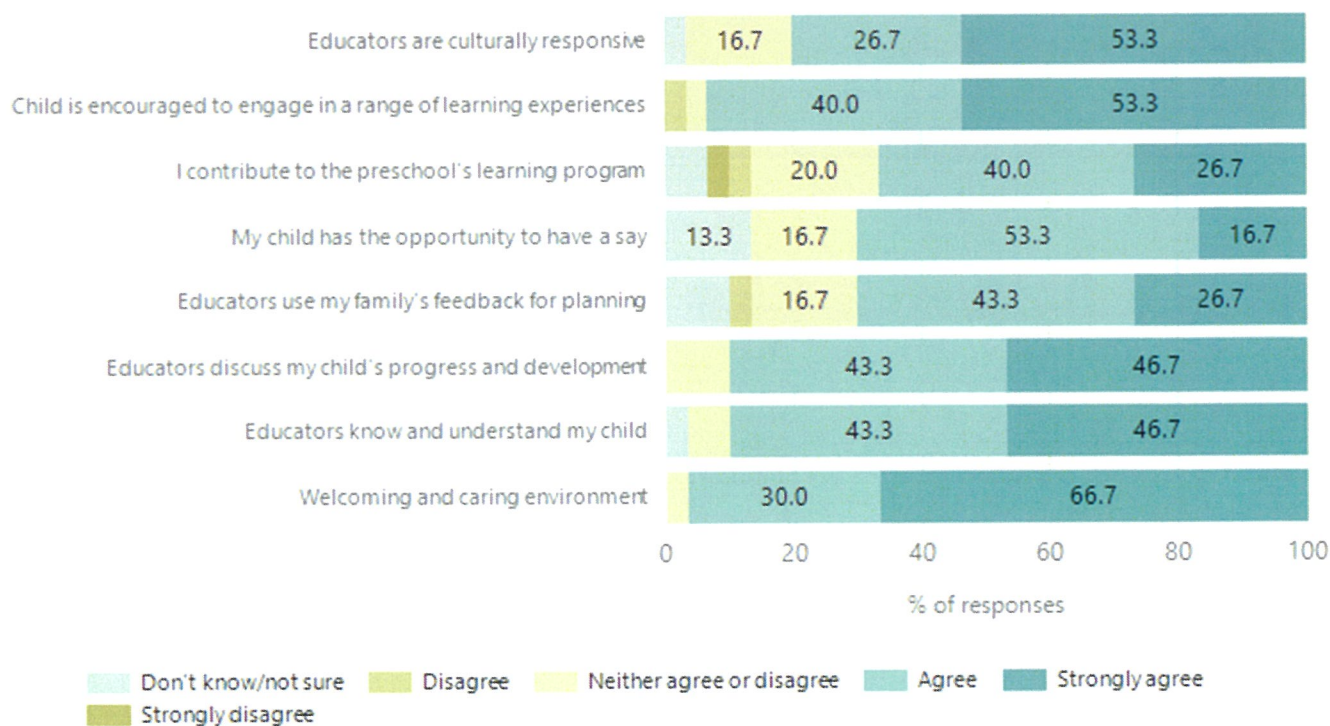
Preschool Family Opinion Survey

Governance, Leadership and Management

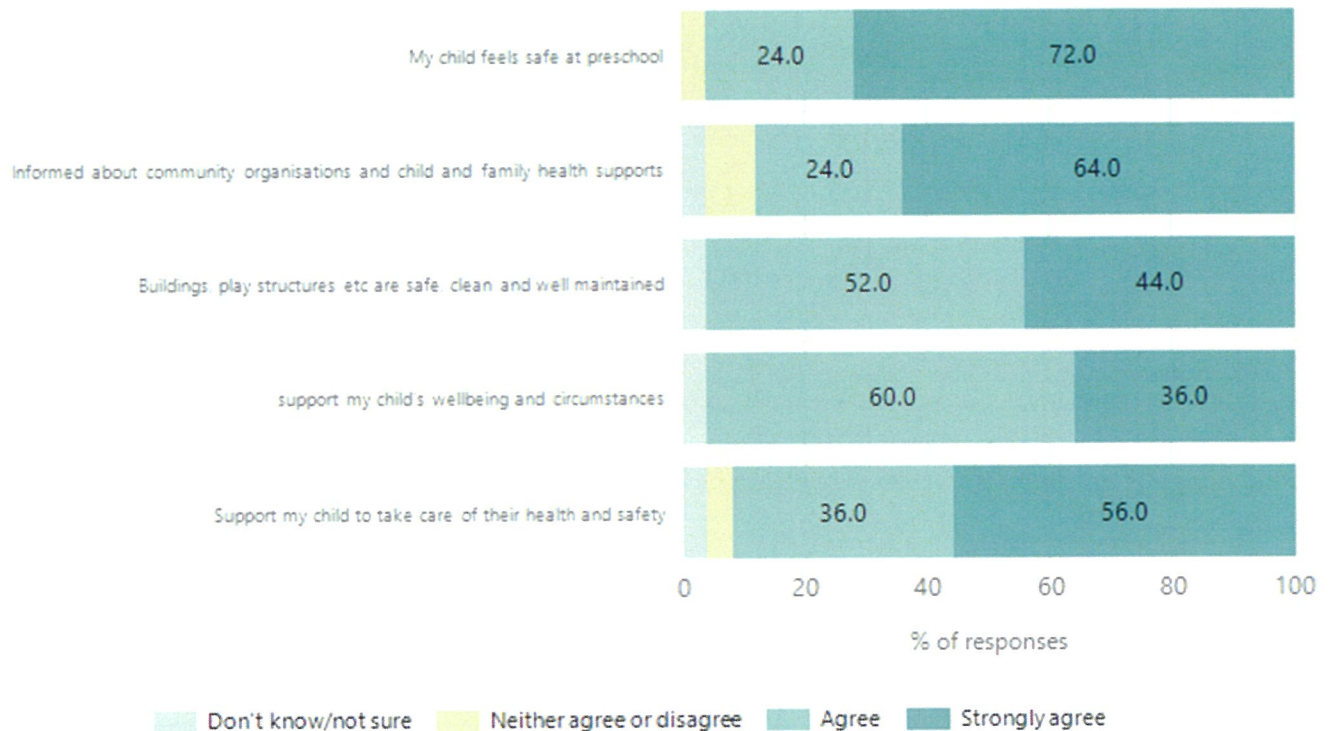


Data Source: 2024 Department for Education Preschool Family Opinions Survey, Term 3 2024.

Quality of Teaching and Learning

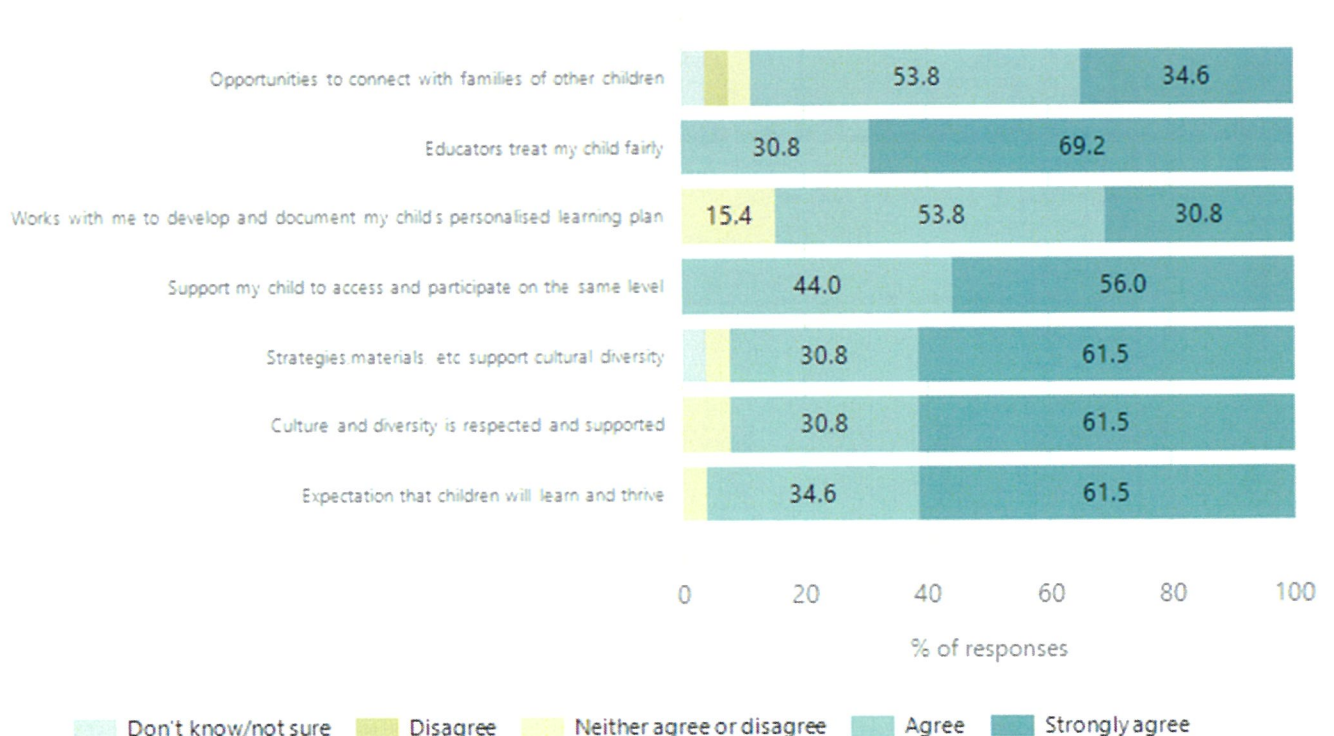


Safety, Health and Wellbeing



Data Source: 2024 Department for Education Preschool Family Opinions Survey, Term 3 2024.

Support and Inclusion



Data Source: 2024 Department for Education Preschool Family Opinions Survey, Term 3 2024.

Destination Schools

Feeder Schools (Site number - Name)	2022	2023	2024
0363 - Port Pirie West Primary School			5.3%
0685 - Risdon Park Primary School	12.8%	16.2%	22.4%
0980 - Airdale Primary School	8.5%	5.9%	10.5%
8021 - St Mark's College:Benedict Campus	4.3%	25.0%	9.2%
9039 - Mid North Christian College	4.3%		5.3%
9999 - Unknown	68.1%	47.1%	46.1%

Note: The data is collected in term 3. It does not reflect actual schools enrolled in by existing preschool children. A blank cell indicates there was no data for students enrolled.

Data Source: Department for Education Destination Data Report, 2024.

Highest Qualifications held by the teaching workforce and workforce composition

All teachers at this school are qualified and registered with the SA Teachers Registration Board.

Qualification Level	Number of Qualifications
Bachelor's degrees or Diplomas	3

Data Source: Data extracted from Mandatory Workforce Information Collections as on the last pay date of June 2024. As self-reported by staff in the system.

Please note: Data includes staff who are Actively employed and on extended paid leave. Please note only the highest qualification of the Teaching staff is reported. Excludes any number of other certifications earned.

Workforce composition including indigenous staff

	Teaching Staff		Non-Teaching Staff	
	Indigenous	Non-Indigenous	Indigenous	Non-Indigenous
Full-Time Equivalents	0.0	2.4	0.0	2.0
Persons	0.0	3.0	0.0	3.0

Data Source: Data extracted from Mandatory Workforce Information Collection as on the last pay date of June 2024.

Please note: Data includes staff who are actively employed and on extended paid leave. "Indigenous category" is self-reported by staff in the system.

Financial Statement

Funding Source	Amount
Grants: State	\$562,490.70
Grants: Commonwealth	\$0
Parent Contributions	\$23,918.94
Fund Raising	\$2498.18
Other	\$320

Data Source: School supplied data.