

2023 annual report to the Community

# Orroroo Area School and Orroroo Kindergarten

Orroroo Area School number: 740

Orroroo Kindergarten number: 6648

Partnership: Flinders



School principal:

Jennifer Stringer

Date of endorsement:

06/02/2024



Government  
of South Australia  
Department for Education

# Context Statement

Orroroo Area School caters for students from R-12. At the time of this report, the enrolment in 2023 is 147. Orroroo Area School is classified as Category 5 on the Department for Education Index of Educational Disadvantage. At the time of this report, the school population includes 6% Aboriginal students, 3% students with disabilities. Further information about the school is available on the school's website (including its context statement), as well as the My School website.

Information about Orroroo Kindergarten is available on the centres website, as well as the Australian Childrens Education and Care Quality Authority (ACECQA) website.

## Governing Council Report

As the academic year draws to a close, we pause to reflect on the events that have shaped our year whilst we farewell the Year 12 class of 2023. As a small rural school, it's been great to see the involvement of the school in the wider community and vice versa. The Preschool are a prime example of this. With several regular visits to the hospital and community home, our youngest students and some of our oldest residents have highlighted the mutual benefit of working together. Activities ranging from musical performances to cooking and sharing food and stories have served as reminders that education extends beyond our school grounds, textbooks, and online resources.

There are numerous instances where students have ventured out and contributed to our wider community – our SRC ran activities at 'Roasting in the Roo' for children and adults, students have worked at local events including large luncheons and dinners, worked on stalls at markets and local events, along with contributing to clubs, organisations, and businesses. Skills they're developing at school have many practical applications outside the school grounds. Our choir has showcased its talents at various venues, providing opportunities for our Year 5/6 students to perform publicly – a valuable skill for their development.

Our staff strive to do their best and aim to provide the tools for our students to be successful. I'd like to thank our teachers – Principals Jenny Stringer and Kelly Ktenidis, classroom teachers, specialists, TRT's and SSO's, for their dedication in facilitating learning experiences for our students. To our nonteaching staff, we thank you for your contribution to our school. Your tireless efforts are instrumental in enhancing the educational experiences of our children and families.

A highlight this year was the success of our sheep and goat enterprise at the Adelaide Show. Many animals have been brought into the Ag program this year, and the students have enjoyed a variety of learning experiences. Some tried and true events, such as Heaps Good Day and the Amazing Race have been well-received, along with some of the 'usual' events across the school and region, including camps, socials, interschool sport, assemblies, excursions, Sports Day and Swimming Carnival. Arts Evening brought the school and community together once again for an afternoon of entertainment, and the new Breakfast Club has been an excellent addition to our school. The school canteen has continued to build throughout 2023 and finished the year with over \$5000 after being open twice each week. We appreciate the efforts of all parent volunteers to keep this service running, and our SRC for helping sell snacks in the canteen; especially Lauren Shephard who has continued to volunteer countless hours overseeing its operation. Gum Tree Café also provided a lunch service on days our canteen was closed.

Our major governing council fundraiser and community event this year was a Quiz Night, held in July. We were ecstatic to make a profit of close to \$7000 thanks to the generosity of a wide range of locals and businesses from near and far. The funds raised contributed to eleven successful grants across the school. This included Primary literacy resources, new playground equipment, portable shade, PE equipment, along with canteen and Breakfast Club equipment. We also supported the new 'Roasting in the Roo' event held for the first time in Orroroo. To our governing council members – Lauren Shephard as secretary, Donna Wood, Michelle Hilder, Paul Gameau, Ahmad Ramadan, and Daniel Williams; thanks for your time, energy, and patience in working together as our parent body to enhance our school this year. Thanks also to Maddy Anderson and Brooke Gamlen for their work as staff representatives, along with Joylene Tapscott and Jo Ridsdale in our finance department. We also acknowledge the work of Annie-Mae Pitkin for her efforts in the role of SRC President in 2023. To all our leaving students, especially our Year 12 cohort – thank you for your contribution to OAS and we wish you every success on your chosen path in 2024 and beyond. We also wish our departing staff and families all the very best for their future endeavours and thank you for your service.

Whilst it was disappointing to finish the year without our annual Presentation Night, I hope we can come back with a renewed enthusiasm and determination to drive our school and wider community towards an enriching and successful 2024.

Rebekah Rasheed  
Chairperson

# School Report

We started 2023 without a full complement of teachers, requiring us to use a mixture of Permanent Relief Teachers (PRT) and local Temporary Relief Teachers (TRT) to delivery aspects of our science and mathematics curriculum. With Joshua Furler beginning his contract earlier than anticipated allowing for a more settled routine to these classes. We did see further change to our staffing throughout the year, with Maddy Anderson accepting a position at John Pirie Secondary School half way through the year, I took Long Service Leave during term 3, with Kelly Ktenidis taking on the role of Principal during that time.

We began 2023 with 148 students at school and 16 children at the preschool. At the end of the year, we had 6 Stage 2 students leave, 1 Stage 1 Student leave after completing their SACE. One student is completing her VET this year as an ongoing task. In 2024 we will accept 15 students into the reception class, making 144 students within the school and 11 pre-schoolers at the start of the year. We had a pleasing number of students completing their SACE in 2023.

For our students in years 3, 5, 7 and 9; NAPLAN moved to Term 1 from the previous timing of Term 2 and was also reported to us in a different way. We previously reported against the department's Standard for Educational Achievement, which utilised the previous NAPLAN reports against BANDS. This year NAPLAN reported student results as: Exceeding, Strong, Developing and Needing Additional Support. Matched against our Site Improvement Plan with goals in Reading and Writing, we could still see that overall, we need to maintain these goals and go deeper for in Reading the results showed that in total 26 students were below expectations of Strong or better. In Writing, there were 31 students below expectations of Strong or better. Our school's Site Improvement Plan has been altered to reflect these changes and set new targets within the goals of Reading and Writing in the absence of the Standards for Educational Achievement.

Although unable to hold our annual Presentation Night at the end of 2023, we have planned for Major Awards to be presented prior to the student leader induction in early 2024.

I was pleased to be able to attend the Agricultural Show camp, where the students had great successes.

Jenny Stringer, Principal.

## Preschool Report

In 2023, we began the year with 16 enrolments with 2 children beginning in Term 3 as midyear intakes, and later 2 new enrolments, finishing the year with 20.

Educators worked collaboratively to provide a purposeful and responsive educational program that reflects and builds on the knowledge, strengths, ideas, culture, abilities and interests of each child. We encourage connection and communication with families to participate in their child's learning journey and share this via portfolios, interviews and conversations culminating in a learning statement at the conclusion of the year.

Our PQIP goal was: For children to curiously engage in purposeful play where they are initiating and contributing to play experiences emerging from their own ideas whilst extending their own interests.

We visited the Orroroo Community Home and Orroroo Hospital 15 times throughout the year. These sessions include music and craft. The Community Home residents joined us at the Preschool for morning tea twice throughout the year. The Preschool also visited the Wednesday wellness group.

We received a Landcare grant worth \$950 and a Governing Council grant for a moveable slide. We took part in the Wonders Rewards Program and we reached over 30kg of bread bags!

Our working with the school, facilitates opportunities of library visits, participation in school assemblies, involvement in Arts Night, Sports Day, Swimming Carnival, Heaps Good Day, Book week etc and transition visits with the reception class.

Family special events include Mother's Day and Father's Day Afternoon Tea and the end of year Christmas concert with 135 attending in 2023.

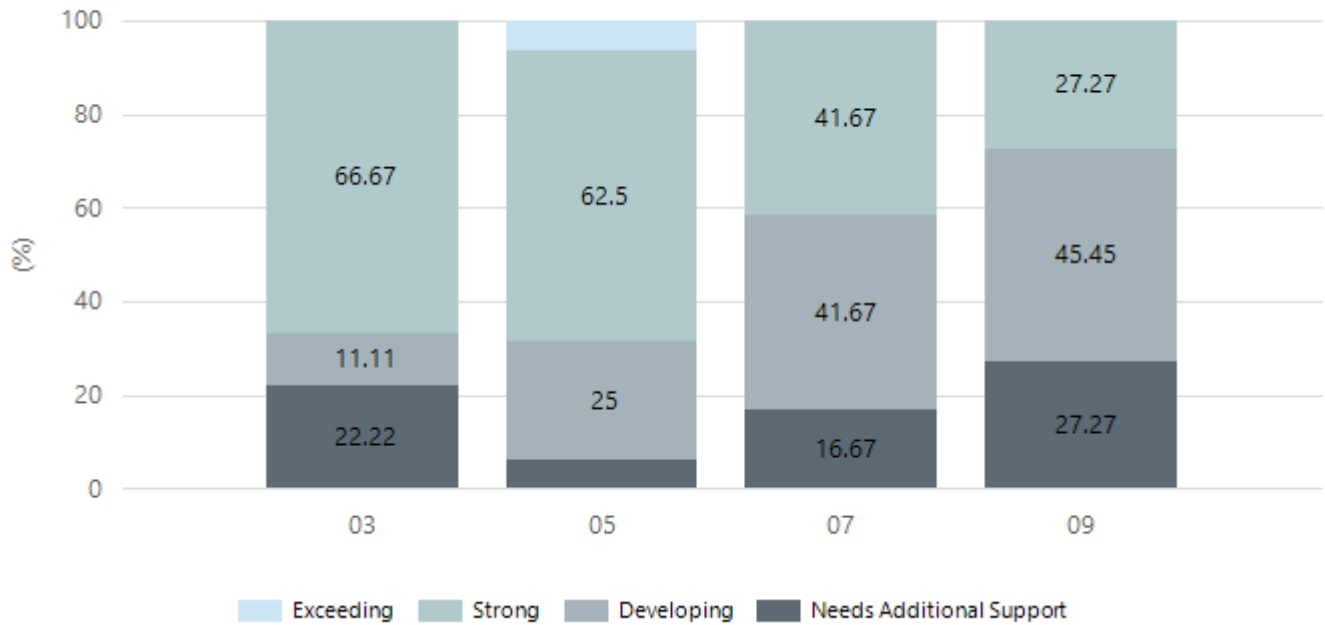
Stephanie Dearlove, Preschool Teacher.

# Performance Summary

## NAPLAN Proficiency

In 2023, the Australian Curriculum, Assessment and Reporting Authority (ACARA) - a Commonwealth Independent statutory authority - announced changes to NAPLAN performance reporting. This new way of reporting by ACARA that NAPLAN results from 2023 will not be comparable to previous years. The new approach replaces the previous numerical NAPLAN bands and the national minimum standard.

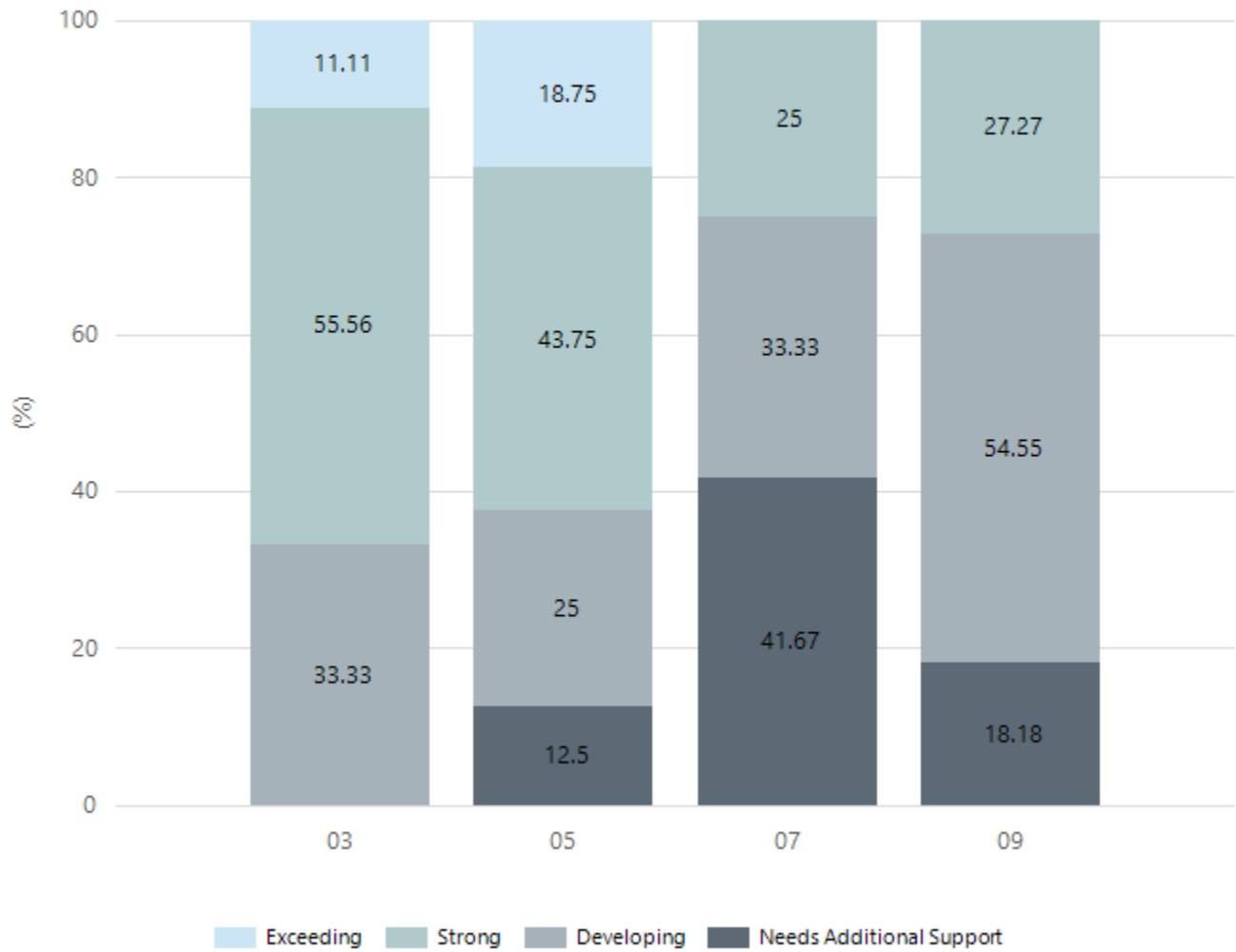
### Numeracy



Year Level	03	05	07	09
Exceeding		1		
Strong	6	10	5	3
Developing	1	4	5	5
Needs Additional Support	2	1	2	3
Total	9	16	12	11

Data Source: Department for Education Assessment Data Holdings, 2023. When there are less than six students in a cohort, no data is supplied.

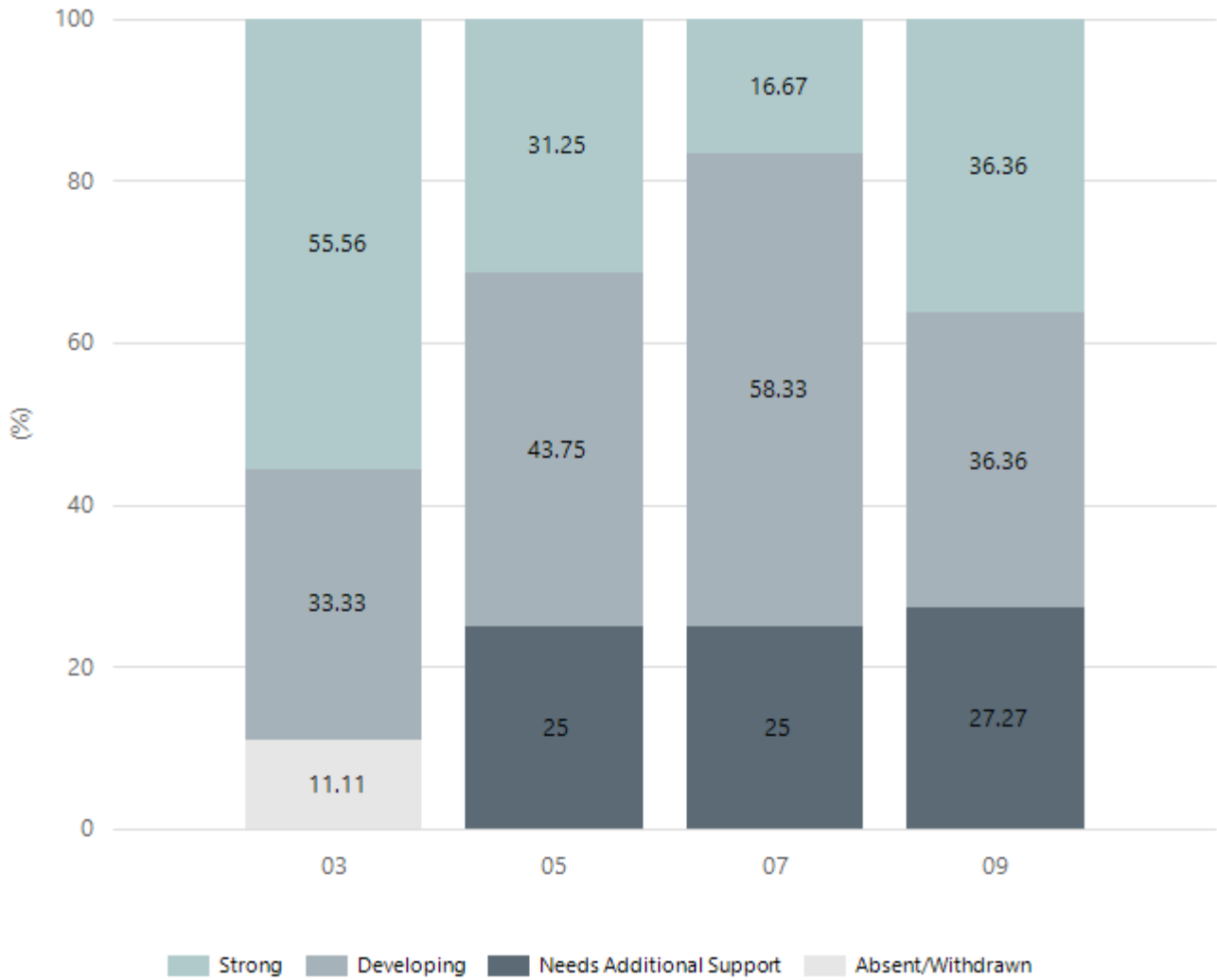
## Reading



Year Level	03	05	07	09
Exceeding	1	3		
Strong	5	7	3	3
Developing	3	4	4	6
Needs Additional Support		2	5	2
Total	9	16	12	11

Data Source: Department for Education Assessment Data Holdings, 2023. When there are less than six students in a cohort, no data is supplied.

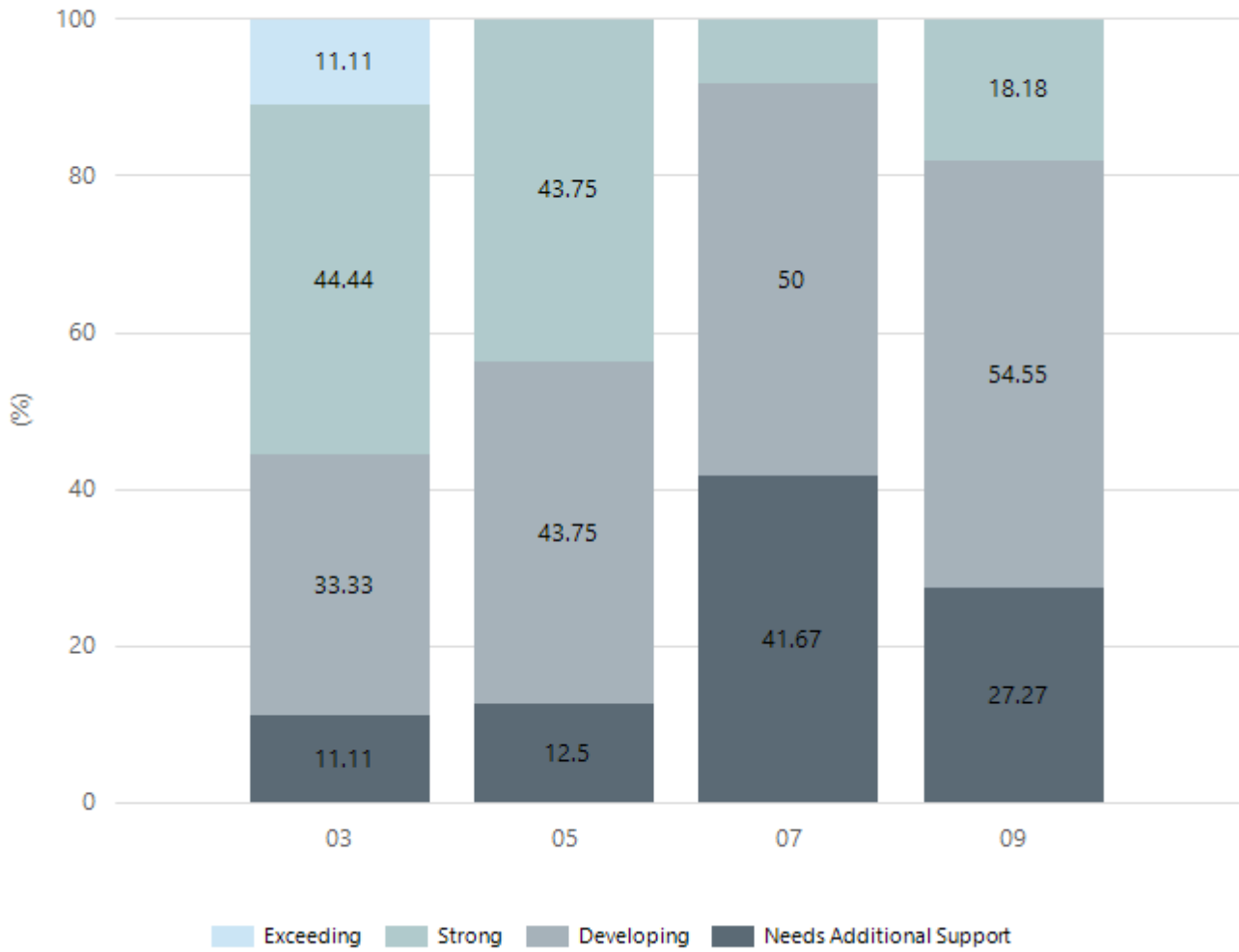
## Writing



Year Level	03	05	07	09
Strong	5	5	2	4
Developing	3	7	7	4
Needs Additional Support		4	3	3
Absent/Withdrawn	1			
Total	9	16	12	11

Data Source: Department for Education Assessment Data Holdings, 2023. When there are less than six students in a cohort, no data is supplied.

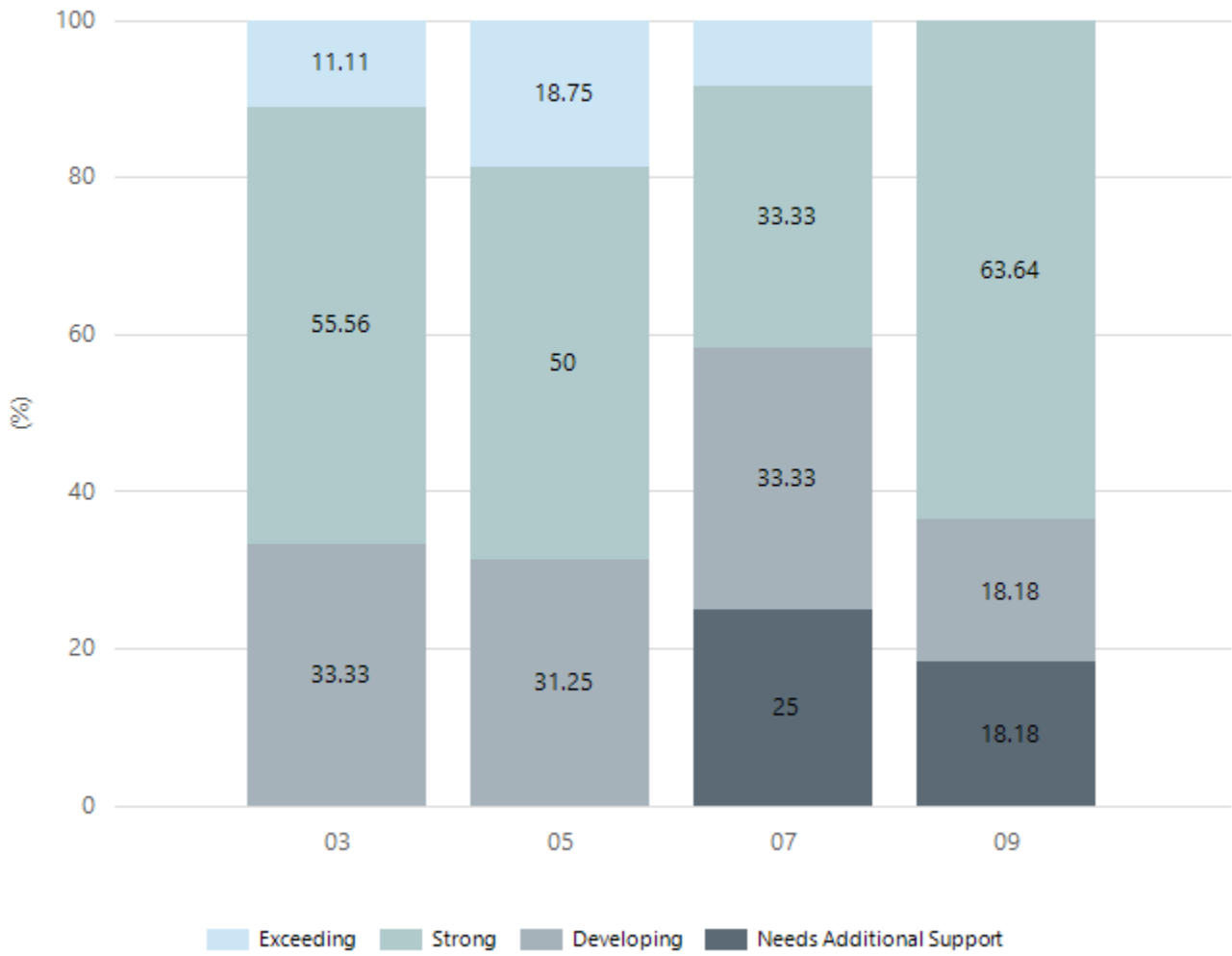
## Grammar



Year Level	03	05	07	09
Exceeding	1			
Strong	4	7	1	2
Developing	3	7	6	6
Needs Additional Support	1	2	5	3
Total	9	16	12	11

Data Source: Department for Education Assessment Data Holdings, 2023. When there are less than six students in a cohort, no data is supplied.

## Spelling



Year Level	03	05	07	09
Exceeding	1	3	1	
Strong	5	8	4	7
Developing	3	5	4	2
Needs Additional Support			3	2
Total	9	16	12	11

Data Source: Department for Education Assessment Data Holdings, 2023. When there are less than six students in a cohort, no data is supplied.



# South Australian Certificate of Education - SACE

## SACE Stage 2 Grades - Percentage of grades that are C- or above for attempted SACE subjects (SEA)

2020	2021	2022	2023
98%	80%	87%	100%

Data Source: SACE School Data Reports, as of February 2023 for 2020-2022. 2023 SACE results are School supplied data. When there are less than six students, no data is supplied. Due to rounding of percentages, total results may not add up to 100%.

## SACE Stage 2 Grade Distribution

Grade	2020	2021	2022	2023
A+	2%			
A	4%	4%	9%	4.5%
A-	28%	8%	9%	
B+	26%	13%	22%	35%
B	13%	8%	7%	17%
B-	17%	15%	16%	13%
C+	6%	25%	9%	26%
C	2%	6%	7%	
C-			7%	4.5%
D+			2%	
D		1%		
D-		1%		

Data Source: SACE School Data Reports, as of February 2023 for 2020-2022. 2023 SACE results are School supplied data. When there are less than six students, no data is supplied. Due to rounding of percentages, total results may not add up to 100%.

## SACE Completion - Percentage of completers out of those students who had the potential to complete their SACE in October that year

2020	2021	2022	2023
100%	100%	100%	85% (1 completing VET)

Data Source: SACE School Data Reports, as of February 2023 for 2020-2022. 2023 SACE results are School supplied data. When there are less than six students, no data is supplied. Due to rounding of percentages, total results may not add up to 100%.

## Year 12 Students undertaking Vocational or Trade Training (VET)

	2021	2022	2023
Percentage of Year 12 students undertaking Vocational Training or Trade Training	46%	71%	67%
Percentage of Year 12 students attaining a Year 12 certificate or equivalent VET qualification	93%	100%	25% (3 completing VET)

Data Source: School supplied data

## Preschool Attendance

	Term 1	Term 2	Term 3	Term 4
2020 centre	98.3%	96.7%	92.9%	73.3%
2021 centre	95.4%	93.3%	90%	98.5%
2022 centre	94.5%	65.5%	89.1%	95.4%
2023 centre	92.5%	85%	86.7%	94.7%
2020 state	89.1%	81.8%	84.6%	85.8%
2021 state	87.3%	85.3%	87.1%	84.5%
2022 state	83.6%	77.6%	77.9%	77.8%
2023 state	85.4%	82.9%	83.4%	81.4%

Based on attendances recorded in the two-week reference period each term. Data for eligible enrolments as described in the department's Enrolment policy. Attendance rates may differ to previous reporting with the transfer from calculations based on deemed attendance to actual attendance using booked hours divided by attended hours. Data Source: Department for Education Attendance Data, Semester 1 Report 2023. A blank cell indicates there were no students enrolled.

Note: Term 2 2020 data may not be available for all preschools.

# School Attendance

Year Level	2021	2022	2023
Reception	88.2%	81.2%	89.6%
Year 01	90.7%	85.7%	92.4%
Year 02	91.6%	79.8%	91.8%
Year 03	93.9%	83.4%	88.9%
Year 04	91.3%	86.8%	94.6%
Year 05	88.0%	84.1%	91.3%
Year 06	92.6%	79.3%	90.3%
Year 07	89.2%	78.4%	91.9%
Year 08	90.4%	86.7%	91.5%
Year 09	91.2%	85.2%	92.7%
Year 10	83.9%	79.6%	83.6%
Year 11	91.3%	74.5%	82.2%
Year 12	91.0%	81.8%	84.7%
Total	90.3%	82.0%	89.6%

Data Source: Department for Education Attendance Data, Semester 1 Report 2023. A blank cell indicates there we no students enrolled. 'Primary Other' includes students enrolled in specialised education options. 'Secondary Other' includes students who have already spent a year at Year 12 and elected to undertake further study at Year 12.

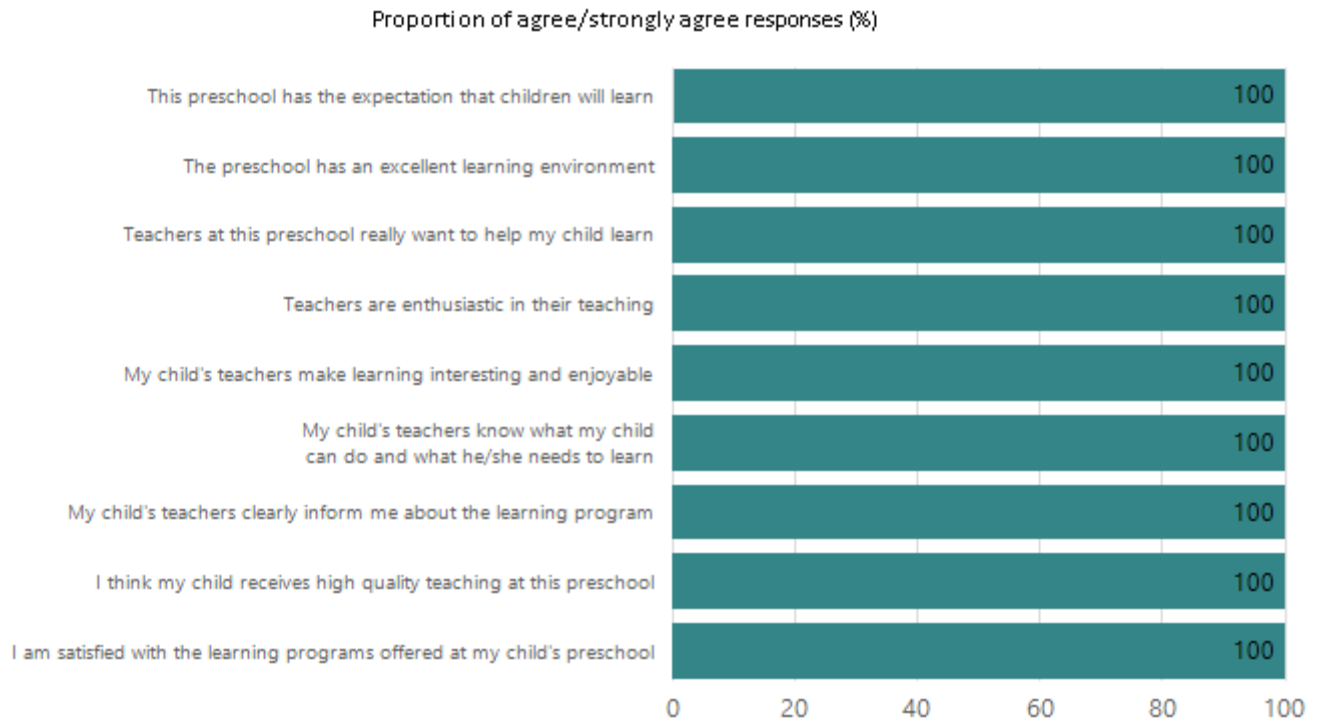
## Attendance Comment

In South Australia, preschool attendance is not compulsory, but it is strongly encouraged. Preschool gives children the best opportunity to develop skills, which prepare them for school. These benefits include establishing positive routines and habits, friendships and connections as well as developing communication, problem-solving and creative skills. All children are entitled to access a preschool program over 4 terms the year before they start school.

In South Australia, all children and young people must be in school from 6 years to 16 years old. They must attend a government or non-government school full time. From age 16 to 17 however, young people must attend school or an approved learning program (such as an apprenticeship, traineeship, accredited course or university). Schools and parents must encourage and support students to come to school every day. Parents and caregivers must make sure their child is enrolled in a school, and attends school all day and everyday it is open, unless a child is sick or has an approved exemption. Teachers and leaders actively follow up when a student misses school, including recording all absences and non-attendance. All schools in South Australia have local attendance procedures governed under the Education and Children's Services Regulations 2020.

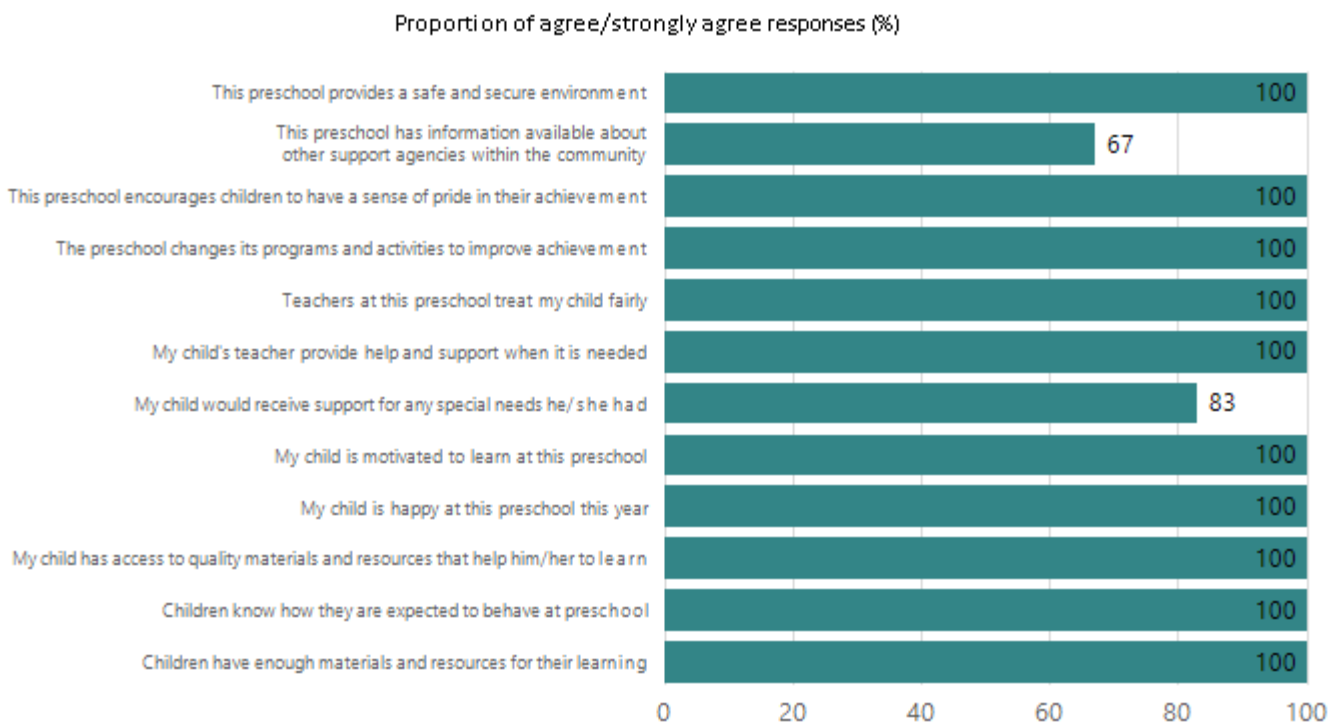
# Preschool Family Opinion Survey

## Quality of Teaching and Learning



Data Source: 2023 Department for Education Preschool Family Opinions Survey, Term 3 2023.

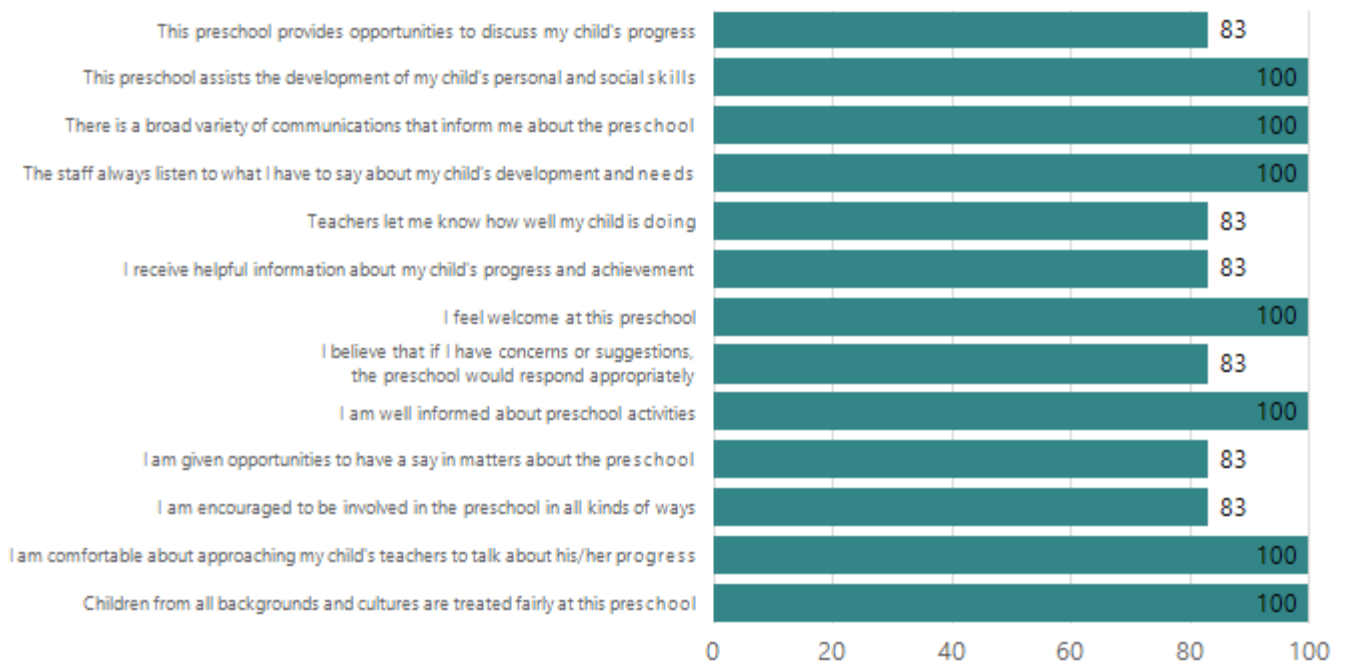
## Support of Learning



Data Source: 2023 Department for Education Preschool Family Opinions Survey, Term 3 2023.

# Relationships and Communication

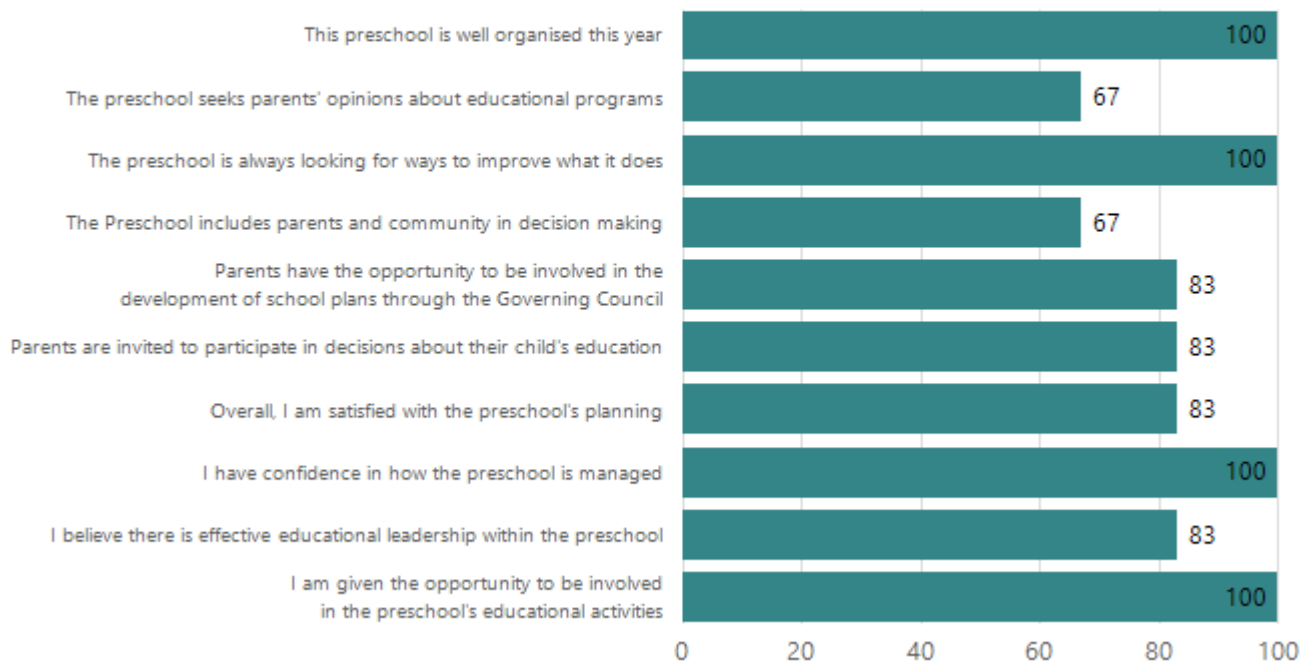
Proportion of agree/strongly agree responses (%)



Data Source: 2023 Department for Education Preschool Family Opinions Survey, Term 3 2023.

# Leadership and Decision Making

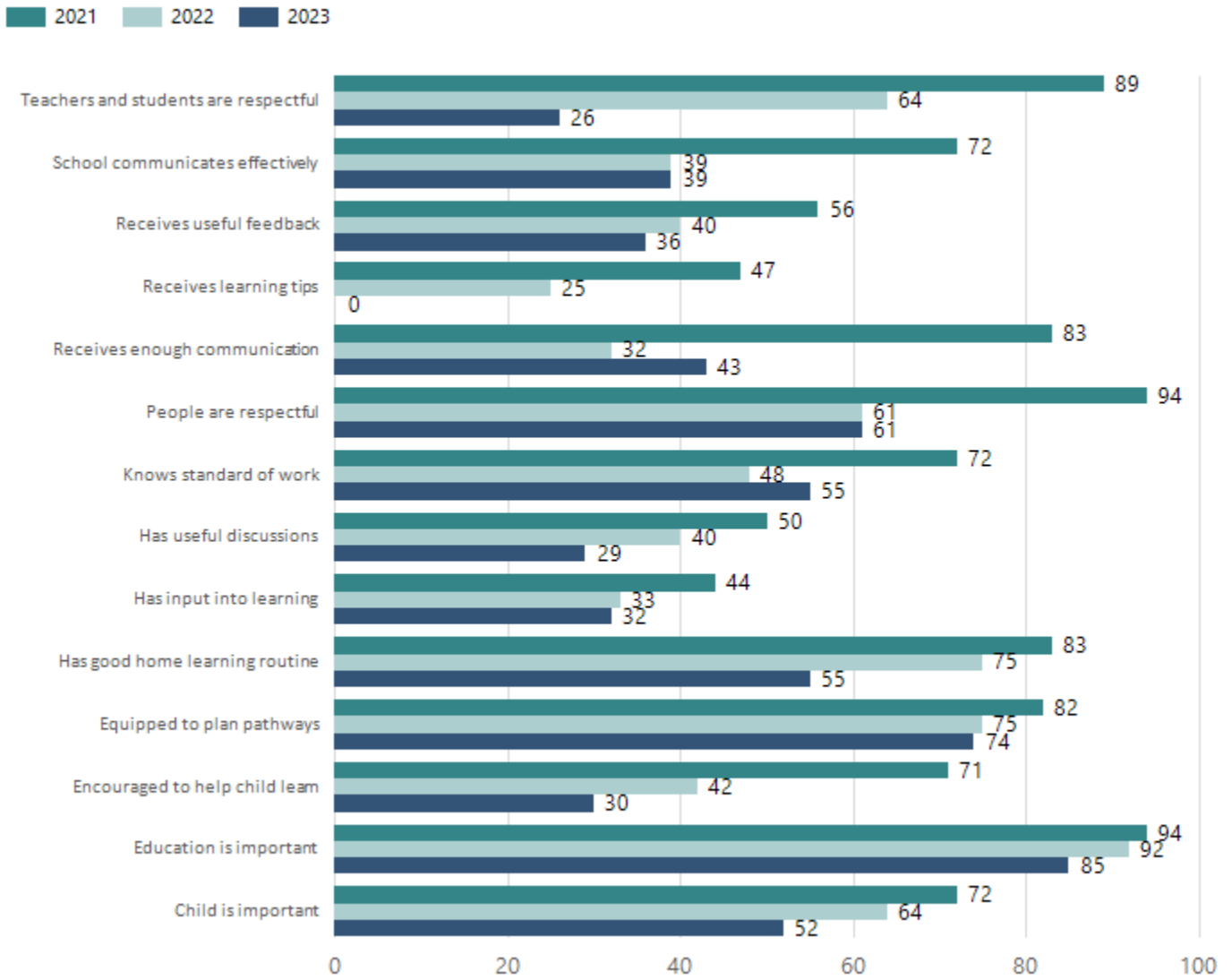
Proportion of agree/strongly agree responses (%)



Data Source: 2023 Department for Education Preschool Family Opinions Survey, Term 3 2023.

# Parent Opinion Survey Results

Proportion of agree/strongly agree response(%)



Data Source: 2023 Department for Education Parent Opinions Survey, Term 3 2023.

## Destination Schools

Feeder Schools (Site number - Name)	2021	2022	2023
0740 - Orroroo Area School	100.0%	90.9%	100.0%
9999 - Unknown		9.1%	

Note: The data is collected in term 3. It does not reflect actual schools enrolled in by existing preschool children. A blank cell indicates there was no data for students enrolled.

Data Source: Department for Education Destination Data Report, 2023.

## Intended Destination

Leave Reason	Number	%
NG - ATTENDING NON-GOV SCHOOL IN SA	2	50.0%
OV - LEFT SA FOR OVERSEAS	1	25.0%
TG - TRANSFERRED TO SA GOVERNMENT SCHOOL	1	25.0%

Data Source: Department for Education Destination Data Report, 2023. Data extract term 3 2023. Data shows recorded destinations for students that left the school in the previous year. Data is uploaded by schools in term 3 and may not reflect final or total figures at time of report creation.

# Highest Qualifications held by the teaching workforce and workforce composition

All teachers at this school are qualified and registered with the SA Teachers Registration Board.

Qualification Level	Number of Qualifications
Bachelor's degrees or Diplomas	14
Postgraduate Qualifications	7

Data Source: Data extracted from Mandatory Workforce Information Collections as on the last pay date of June 2023. As self-reported by staff in the system.

Please note: Data includes staff who are Actively employed and on extended paid leave. Please note only the highest qualification of the Teaching staff is reported. Excludes any number of other certifications earned.

## Workforce composition including indigenous staff

	Teaching Staff		Non-Teaching Staff	
	Indigenous	Non-Indigenous	Indigenous	Non-Indigenous
Full-Time Equivalents	0.0	17.1	0.0	10.4
Persons	0.0	21.0	0.0	20.0

Data Source: Data extracted from Mandatory Workforce Information Collection as on the last pay date of June 2023.

Please note: Data includes staff who are actively employed and on extended paid leave. "Indigenous category" is self-reported by staff in the system.

## Financial Statement

Funding Source	Amount \$
Grants: State	286,312.89
Grants: Commonwealth	30,000.00
Parent Contributions	76,371.83
Fund Raising	8,257.37
Other	341,793.22

Data Source: School supplied data.