

2024 annual report to the Community

# Laura Primary School and Laura Preschool Centre

Laura Primary School number: 220

Laura Preschool Centre number: 6631

Partnership: Upper Mid North



School principal:

Leanne Opperman

Signature

Date of endorsement:

26/05/2025



Government  
of South Australia  
Department for Education

# Context Statement

Laura Primary School caters for students from R-6. At the time of this report, the enrolment in 2024 is 63. Laura Primary School is classified as Category 5 on the Department for Education Index of Educational Disadvantage. At the time of this report, the school population includes 14% Aboriginal students, 3% students with disabilities, 2% children/young people in care. Further information about the school is available on the school's website (including its context statement), as well as the My School website.

Information about Laura Preschool Centre is available on the centres website, as well as the Australian Childrens Education and Care Quality Authority (ACECQA) website.

Data Source: Department for Education data holdings from Mid census captured in AUGUST 2024.

## Governing Council Report

As we wrap up another busy and rewarding year, I want to take a moment to sincerely thank all the staff at Laura Primary School and Kindy for your dedication and hard work throughout 2024.

The data from this year's assessments once again highlights the strong progress our students are making. A special thank you to Marianne for the outstanding work you're doing with our early years learners, laying solid foundations that support their ongoing development. And to all our staff, thank you for your continued efforts in nurturing and growing our students through every stage of their schooling.

Here are just a few of the many highlights from the year:

### School Camp

A huge thank you to Hannah and all staff who helped make camp happen, it takes extra time and effort, and it certainly doesn't go unnoticed. Thanks also to Darren Pech and Daniel Palmer for their valued support on the trip.

### Sports Day & Colour Run

Congratulations to Jody for taking the lead on Sports Day and delivering such a successful event. This was followed by a colourful and fun Colour Run. Well done to Hannah and the SRC for organising such a successful event and raising a significant amount of funds.

### Forrest Kindy

To our Kindy staff well done on launching Forest Kindy this year! The photos say it all, smiling faces, fun learning, and engaged kids. A fantastic initiative.

### Governing Council Fundraising

Our main fundraiser, the Golden North van at the Laura Fair was a huge success. Thank you to all the volunteers who helped run the stall, and to Golden North and the Willis family for your continued support. A big thank you also to Tammy, Leah, and the fundraising committee for all the work you've put in again this year.

### Working Bees

A sincere thank you to all families who contributed their time to our working bees. Your efforts help keep our grounds in great condition. Special thanks to Phil for your ongoing coordination and commitment.

### Governing Council

On behalf of the school community, I would like to extend our sincere thanks to all Governing Council members for your time and commitment throughout the year. Your support plays a vital role in shaping the direction and success of our school.

We welcomed Nikki Downing as a member of the Governing Council this year. Your willingness to get involved and offer support has been noted and is very much appreciated.

A special thank you to Avril Clogg, Kelly Burton, Hannah Pech, and Leah Palmer, who are concluding their time on the Council. Your contributions over the years have been greatly valued. We thank you very much for your service.

I wish everyone a safe, restful break and look forward to another positive year ahead.

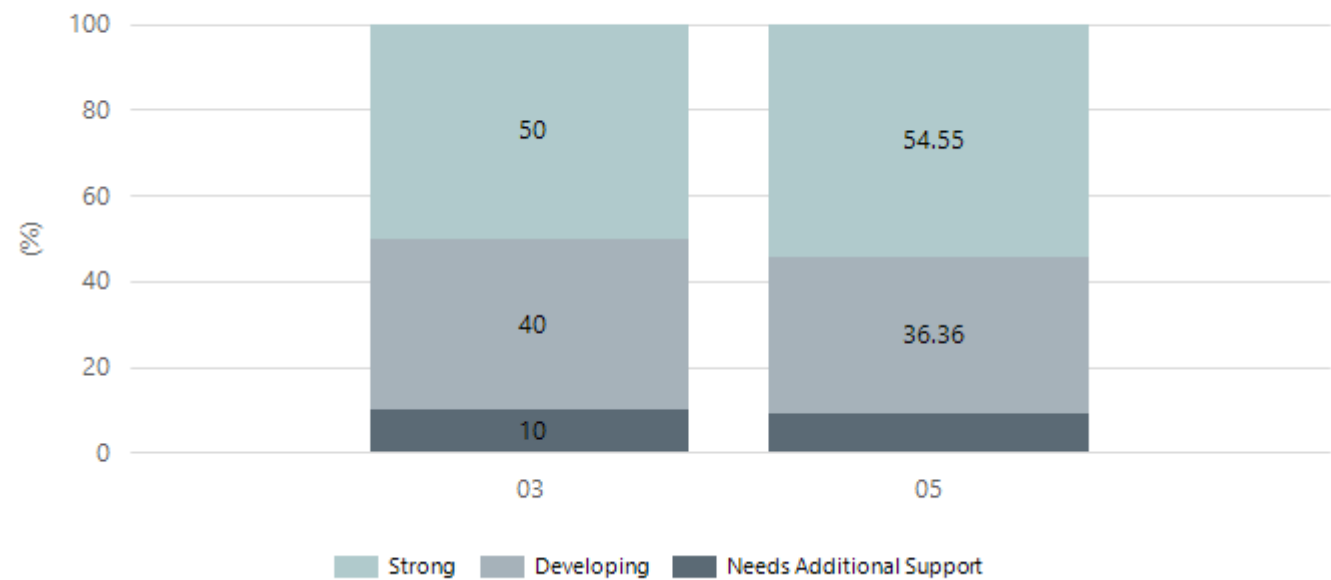
Ricky Pech (Governing Council Chairperson)

# Performance Summary

## NAPLAN Proficiency

In 2023 the Australian Curriculum, Assessment and Reporting Authority (ACARA) - a Commonwealth Independent statutory authority - announced changes to NAPLAN performance reporting. The new approach replaces the previous numerical NAPLAN bands and the national minimum standard.

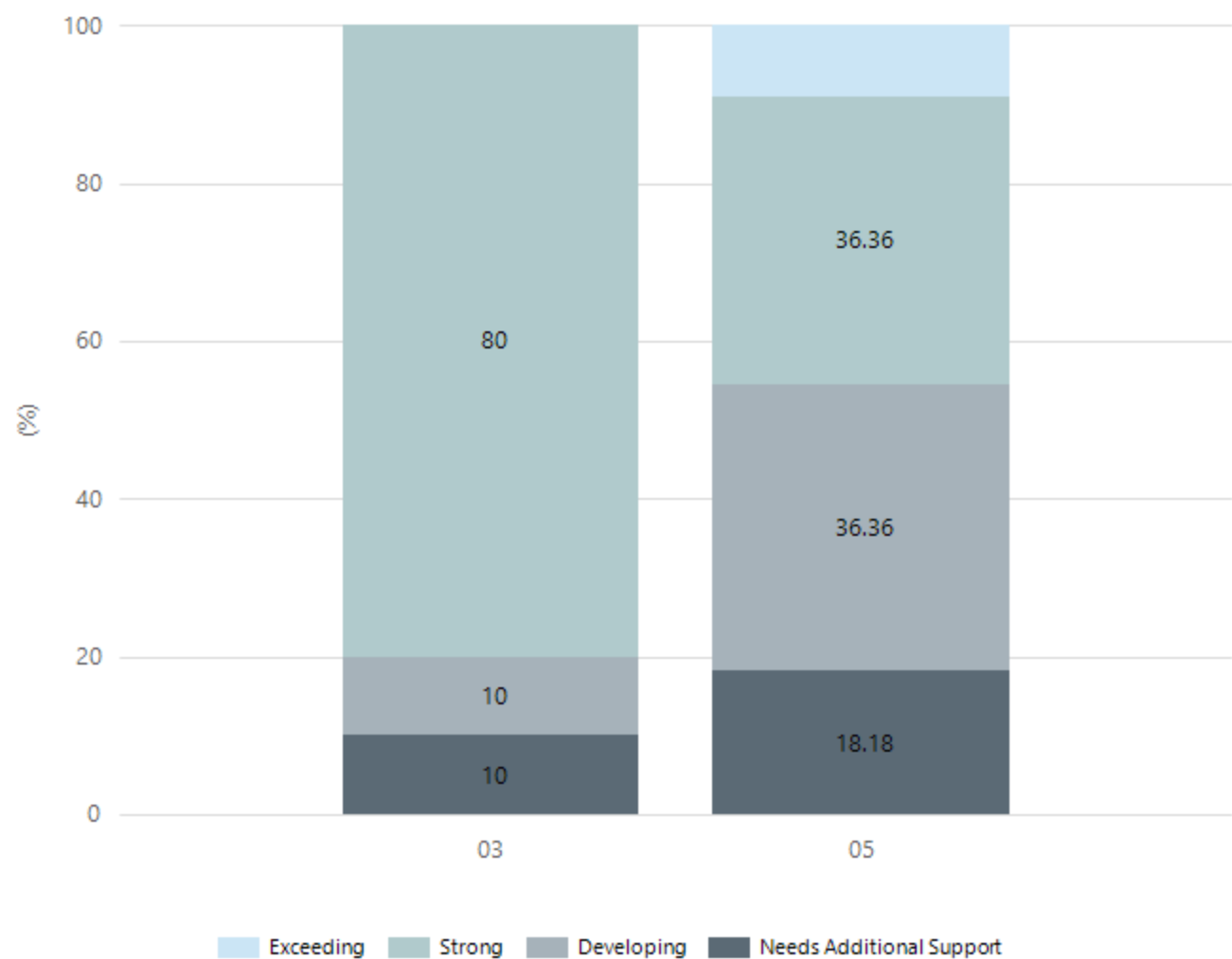
### Numeracy



Year Level	03	05
Strong	5	6
Developing	4	4
Needs Additional Support	1	1
Total	10	11

Data Source: Department for Education Assessment Data Holdings, 2024. If there are less than 6 students who sat NAPLAN in a school, no information will be shown. If a year level has less than 6 students, that year level will not be shown in NAPLAN results.

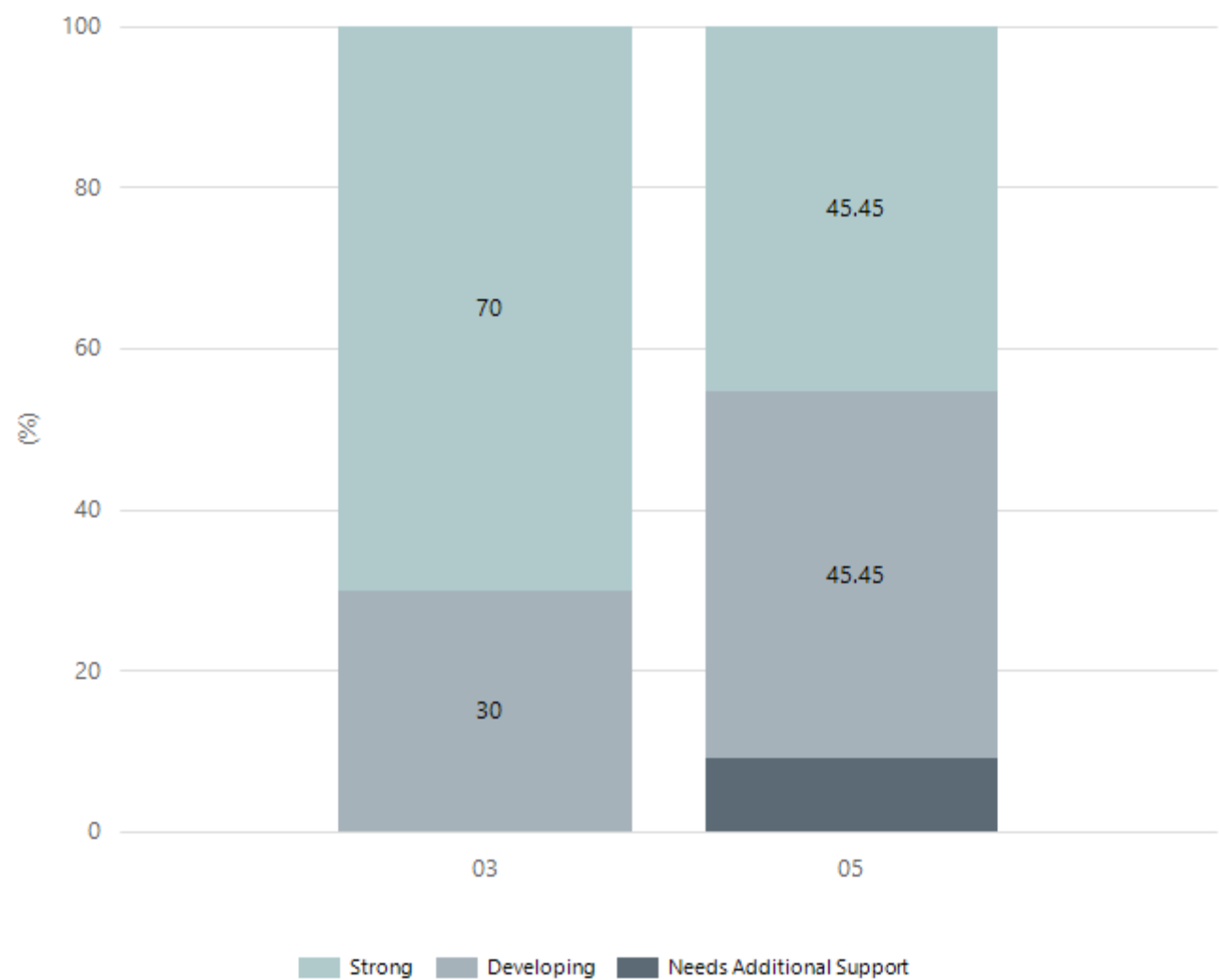
Reading



Year Level	03	05
Exceeding		1
Strong	8	4
Developing	1	4
Needs Additional Support	1	2
Total	10	11

Data Source: Department for Education Assessment Data Holdings, 2024. If there are less than 6 students who sat NAPLAN in a school, no information will be shown. If a year level has less than 6 students, that year level will not be shown in NAPLAN results.

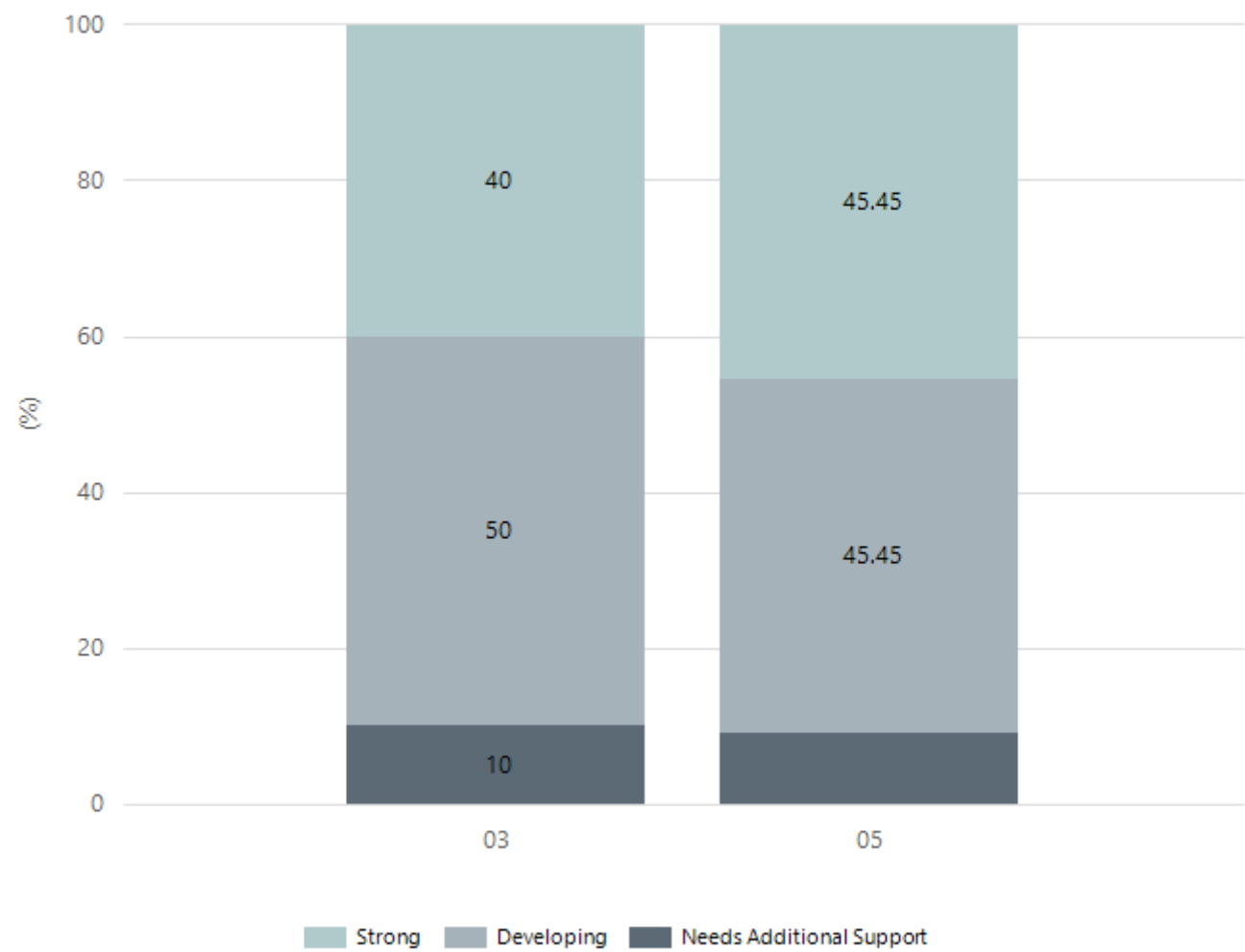
Writing



Year Level	03	05
Strong	7	5
Developing	3	5
Needs Additional Support		1
Total	10	11

Data Source: Department for Education Assessment Data Holdings, 2024. If there are less than 6 students who sat NAPLAN in a school, no information will be shown. If a year level has less than 6 students, that year level will not be shown in NAPLAN results.

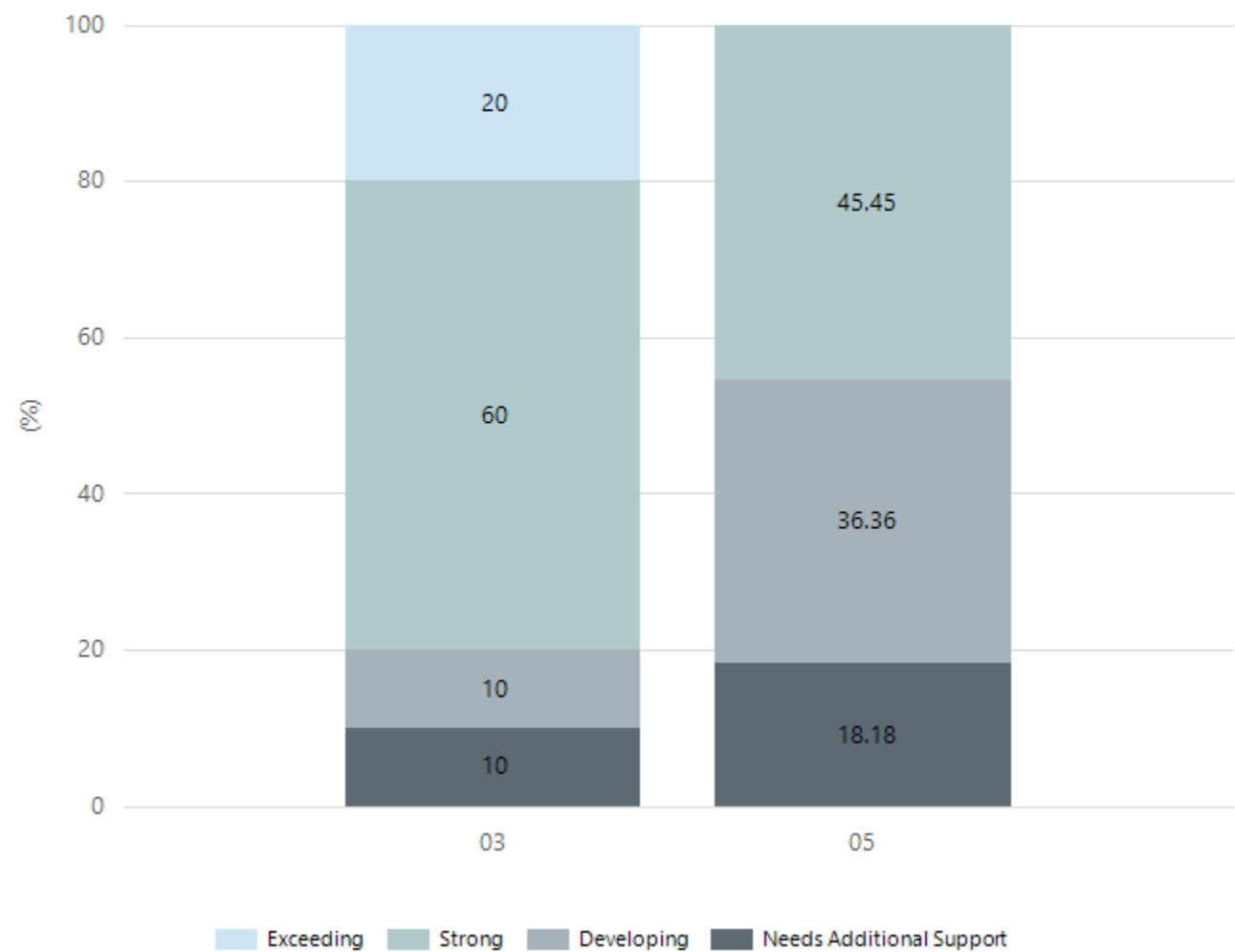
Grammar



Year Level	03	05
Strong	4	5
Developing	5	5
Needs Additional Support	1	1
Total	10	11

Data Source: Department for Education Assessment Data Holdings, 2024. If there are less than 6 students who sat NAPLAN in a school, no information will be shown. If a year level has less than 6 students, that year level will not be shown in NAPLAN results.

Spelling



Year Level	03	05
Exceeding	2	
Strong	6	5
Developing	1	4
Needs Additional Support	1	2
Total	10	11

Data Source: Department for Education Assessment Data Holdings, 2024. If there are less than 6 students who sat NAPLAN in a school, no information will be shown. If a year level has less than 6 students, that year level will not be shown in NAPLAN results.

# Preschool Attendance

	Term 1	Term 2	Term 3	Term 4
2021 centre	100%	25%	44.6%	100%
2022 centre	77.3%	68.9%	45.5%	48%
2023 centre	97.5%	80.7%	72.1%	61.2%
2024 centre	86.2%		69.8%	

Based on attendances recorded in the two-week reference period each term. Data for eligible enrolments as described in the department's Enrolment policy. Attendance rates may differ to previous reporting with the transfer from calculations based on deemed attendance to actual attendance using booked hours divided by attended hours. Data Source: Department for Education Attendance Data, Semester 1 Report 2024. A blank cell indicates there we no students enrolled.

# School Attendance

Year Level	2022	2023	2024
Reception	89.9%	87.1%	82.8%
Year 01	80.8%	91.7%	89.9%
Year 02	88.6%	90.8%	92.5%
Year 03	88.5%	88.6%	88.5%
Year 04	85.8%	91.0%	84.2%
Year 05	88.0%	91.1%	90.9%
Year 06	86.2%	88.6%	88.1%
Total	86.9%	89.7%	87.7%

Data Source: Department for Education Attendance Data, Semester 1 Report 2024. A blank cell indicates there we no students enrolled. 'Primary Other' includes students enrolled in specialised education options. 'Secondary Other' includes students who have already spent a year at Year 12 and elected to undertake further study at Year 12.

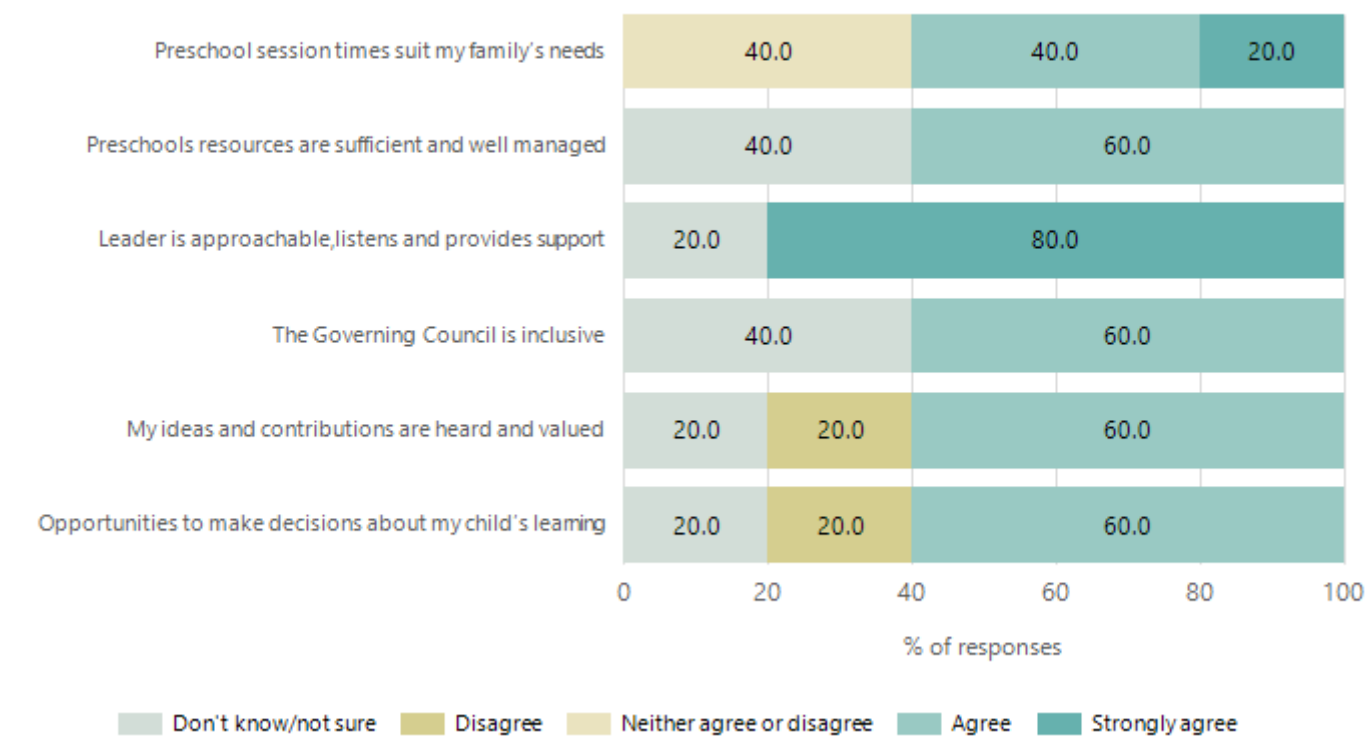
# Attendance Comment

In South Australia, preschool attendance is not compulsory, but it is strongly encouraged. Preschool gives children the best opportunity to develop skills, which prepare them for school. These benefits include establishing positive routines and habits, friendships and connections as well as developing communication, problem-solving and creative skills. All children are entitled to access a preschool program over 4 terms the year before they start school.

In South Australia, all children and young people must be in school from 6 years to 16 years old. They must attend a government or non-government school full time. From age 16 to 17 however, young people must attend school or an approved learning program (such as an apprenticeship, traineeship, accredited course or university). Schools and parents must encourage and support students to come to school every day. Parents and caregivers must make sure their child is enrolled in a school, and attends school all day and everyday it is open, unless a child is sick or has an approved exemption. Teachers and leaders actively follow up when a student misses school, including recording all absences and non-attendance. All schools in South Australia have local attendance procedures governed under the Education and Children's Services Regulations 2020.

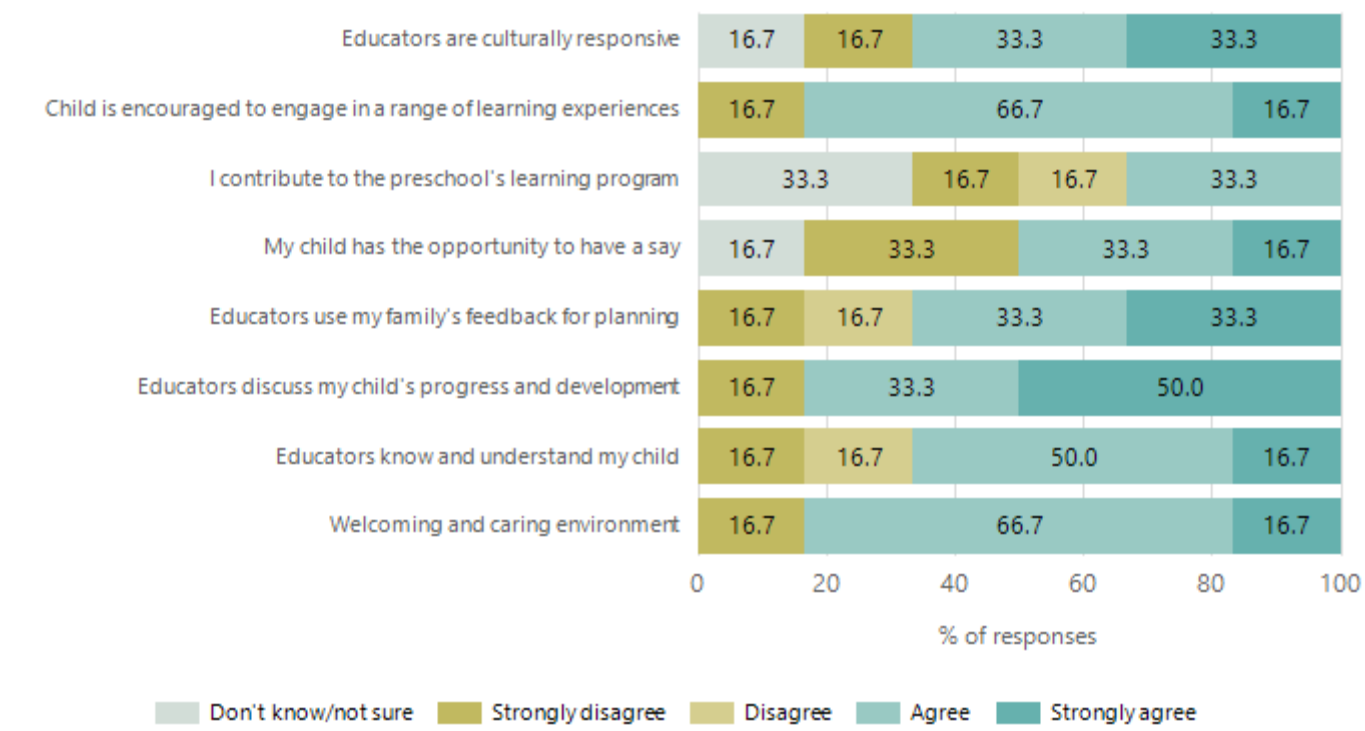
# Preschool Family Opinion Survey

## Governance, Leadership and Management



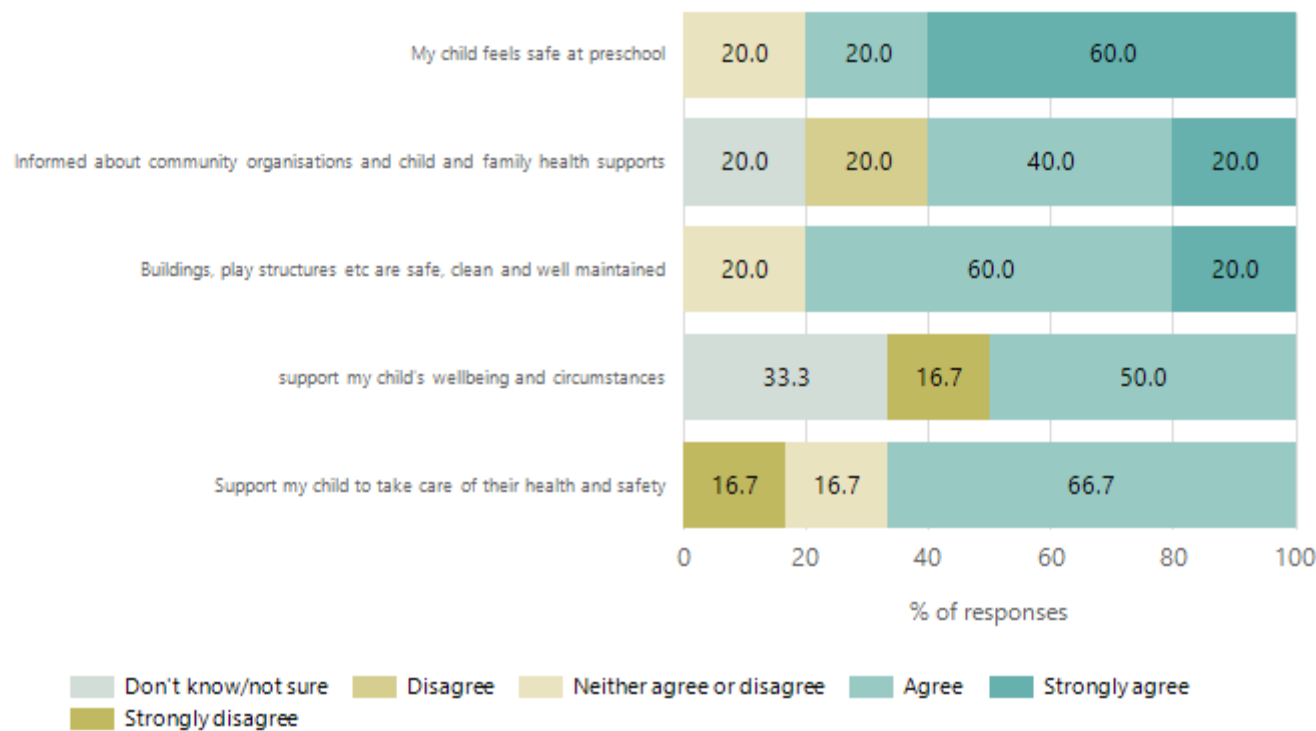
Data Source: 2024 Department for Education Preschool Family Opinions Survey, Term 3 2024.

## Quality of Teaching and Learning



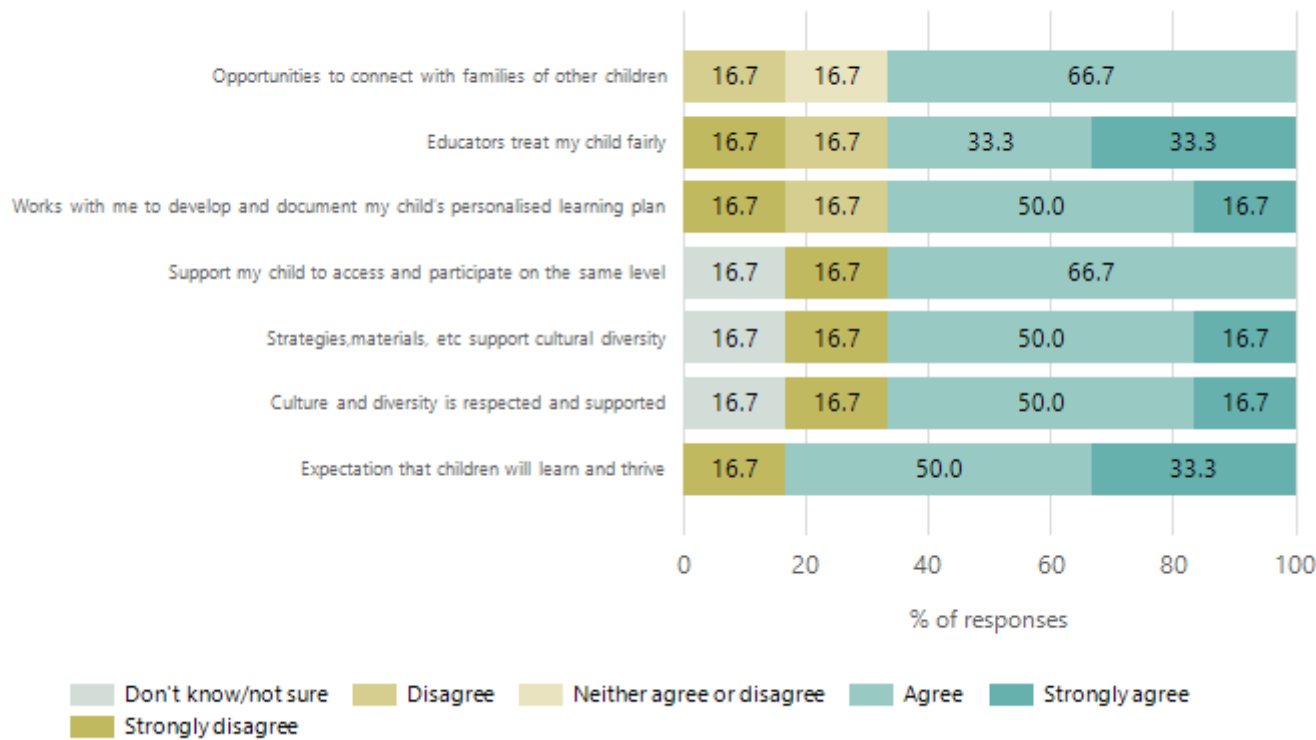
Data Source: 2024 Department for Education Preschool Family Opinions Survey, Term 3 2024.

## Safety, Health and Wellbeing



Data Source: 2024 Department for Education Preschool Family Opinions Survey, Term 3 2024.

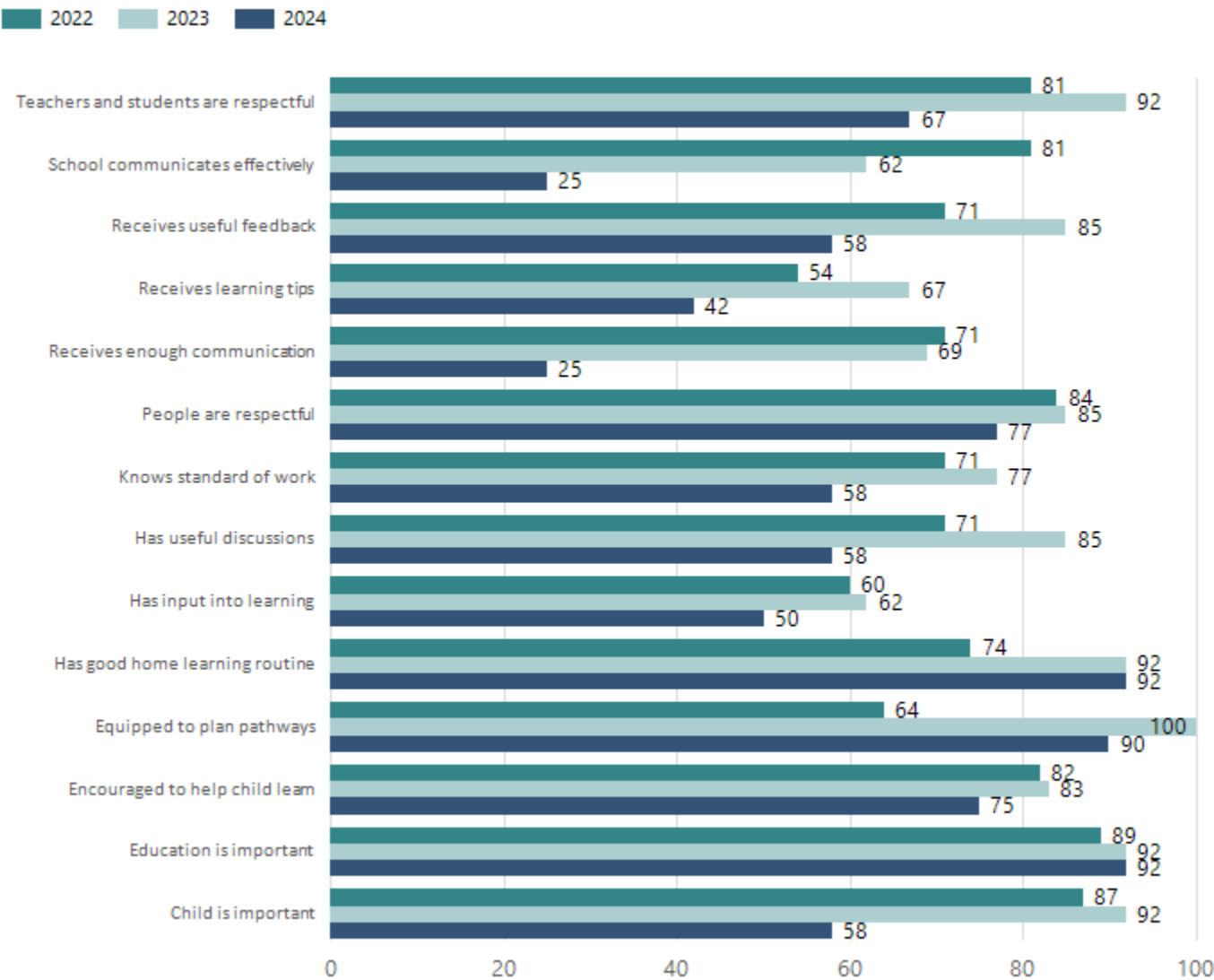
## Support and Inclusion



Data Source: 2024 Department for Education Preschool Family Opinions Survey, Term 3 2024.

# School Parent Opinion Survey Results

Proportion of agree/strongly agree response(%)



Data Source: 2024 Department for Education Parent Opinions Survey, Term 3 2024.

# Destination Schools

Feeder Schools (Site number - Name)	2022	2023	2024
0220 - Laura Primary School	81.8%	64.7%	20.0%
9027 - St Joseph's Parish Primary School	9.1%	11.8%	
9999 - Unknown	9.1%	23.5%	80.0%

Note: The data is collected in term 3. It does not reflect actual schools enrolled in by existing preschool children. A blank cell indicates there was no data for students enrolled.

Data Source: Department for Education Destination Data Report, 2024.

# Intended Destination

Leave Reason	Number	%
TG - TRANSFERRED TO SA GOVERNMENT SCHOOL	3	100.0%

Data Source: Department for Education Destination Data Report, 2024. Data extract term 3 2024. Data shows recorded destinations for students that left the school in the previous year. Data is uploaded by schools in term 3 and may not reflect final or total figures at time of report creation.

# Highest Qualifications held by the teaching workforce and workforce composition

All teachers at this school are qualified and registered with the SA Teachers Registration Board.

Qualification Level	Number of Qualifications
Bachelor's degrees or Diplomas	6
Postgraduate Qualifications	1

Data Source: Data extracted from Mandatory Workforce Information Collections as on the last pay date of June 2024. As self-reported by staff in the system.

Please note: Data includes staff who are Actively employed and on extended paid leave. Please note only the highest qualification of the Teaching staff is reported. Excludes any number of other certifications earned.

## Workforce composition including indigenous staff

	Teaching Staff		Non-Teaching Staff	
	Indigenous	Non-Indigenous	Indigenous	Non-Indigenous
Full-Time Equivalents	0.0	6.3	0.0	4.0
Persons	0.0	7.0	0.0	6.0

Data Source: Data extracted from Mandatory Workforce Information Collection as on the last pay date of June 2024.

Please note: Data includes staff who are actively employed and on extended paid leave. "Indigenous category" is self-reported by staff in the system.

# Financial Statement

Funding Source	Amount
Grants: State	\$1,555 315.16
Grants: Commonwealth	\$0
Parent Contributions	\$18 755.50
Fund Raising	\$9 366.80
Other	\$19 529.94

Data Source: School supplied data.