

## 2024 annual report to the Community

# Tinyeri Children's Centre

Tinyeri Children's Centre number: 6551

Partnership: Murraylands



Preschool director:

Miriam Bjelovarac

Date of endorsement:

13/03/2025



Government  
of South Australia  
Department for Education

# Context Statement

Information about Tinyeri Children's Centre is available on the centres website, as well as the Australian Childrens Education and Care Quality Authority (ACECQA) website.

## Governing Council Report

Upon reflection on 2024 for Tinyeri Children’s Centre I would like to start by saying how honoured and proud I feel to be a part of such a supportive, positive and productive governing council and community.

A number of improvements have been made to the centre in 2024, highlighting our commitment to safety and to providing enriching, positive experiences for the families and children who use the facilities and services. The next stage of the outdoor area in the community space has begun after a long wait, the play platform in the kindy has been replaced at great cost, and great community involvement has been evident through our numerous and wide-reaching playgroups.

We are also so proud to have achieved an Exceeding rating for our recent assessment highlighting the exceptional level of commitment to improvement and excellence whilst always keeping our children and their needs at the forefront.

I would like to thank each of the members of our governing council and all of the staff at Tinyeri Children’s Centre for their incredible dedication, commitment and hard work and I look forward to our ongoing progress in 2025. Thank you.

Emma Love

Chairperson

## Preschool Attendance

	Term 1	Term 2	Term 3	Term 4
2021 centre	85.1%	83.2%	88.5%	82.9%
2022 centre	46.3%	76.6%	67.9%	48.7%
2023 centre	83.3%	78.7%	79.9%	81.4%
2024 centre	81.7%		79.8%	

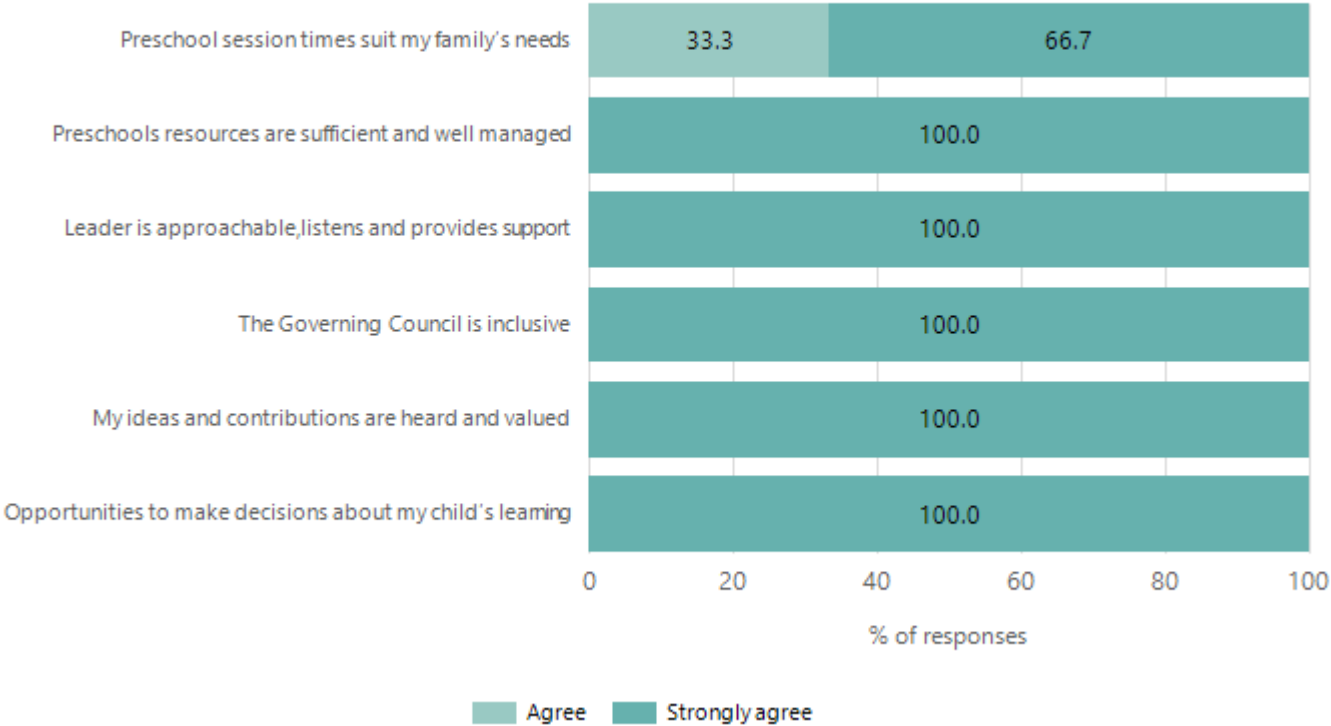
Based on attendances recorded in the two-week reference period each term. Data for eligible enrolments as described in the department's Enrolment policy. Attendance rates may differ to previous reporting with the transfer from calculations based on deemed attendance to actual attendance using booked hours divided by attended hours. Data Source: Department for Education Attendance Data, Semester 1 Report 2024. A blank cell indicates there we no students enrolled.

## Attendance Comment

In South Australia, preschool attendance is not compulsory, but it is strongly encouraged. Preschool gives children the best opportunity to develop skills, which prepare them for school. These benefits include establishing positive routines and habits, friendships and connections as well as developing communication, problem-solving and creative skills. All children are entitled to access a preschool program over 4 terms the year before they start school. Aboriginal and Torres Strait Islander children and children in care of the Minister are entitled to access preschool from their 3<sup>rd</sup> birthday.

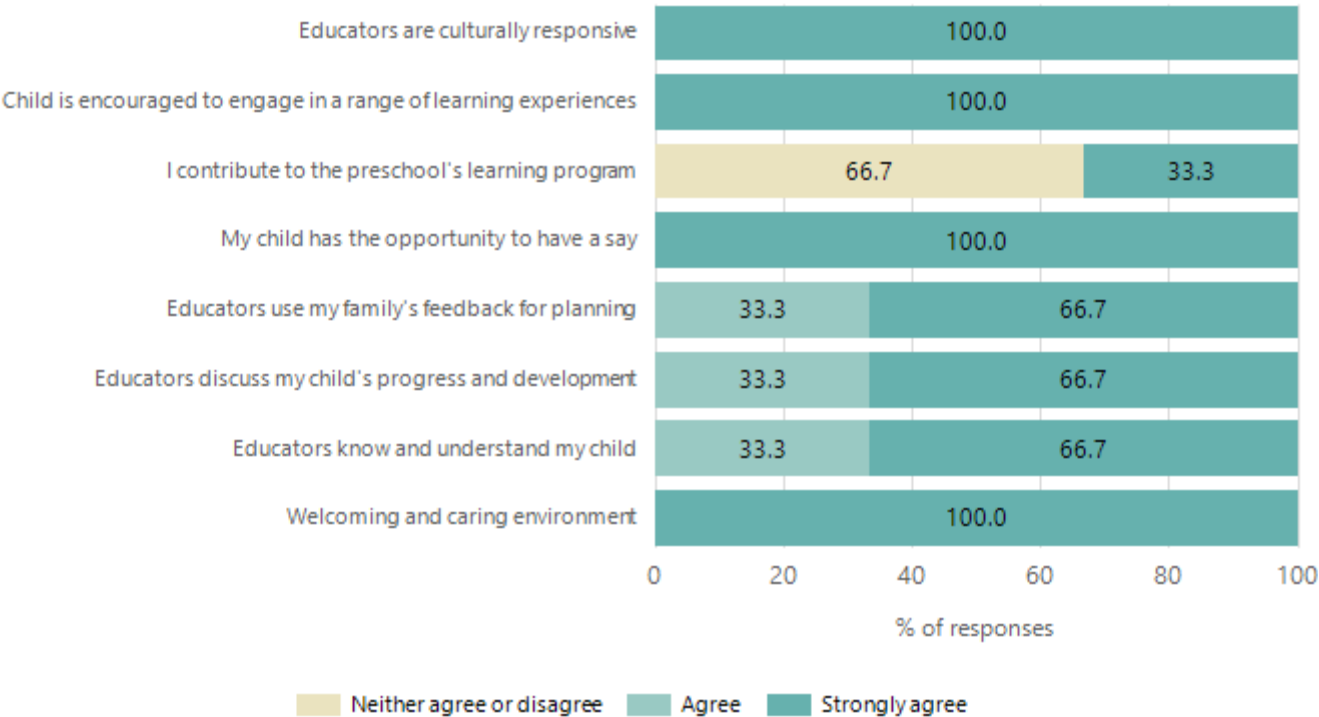
# Preschool Family Opinion Survey

## Governance, Leadership and Management



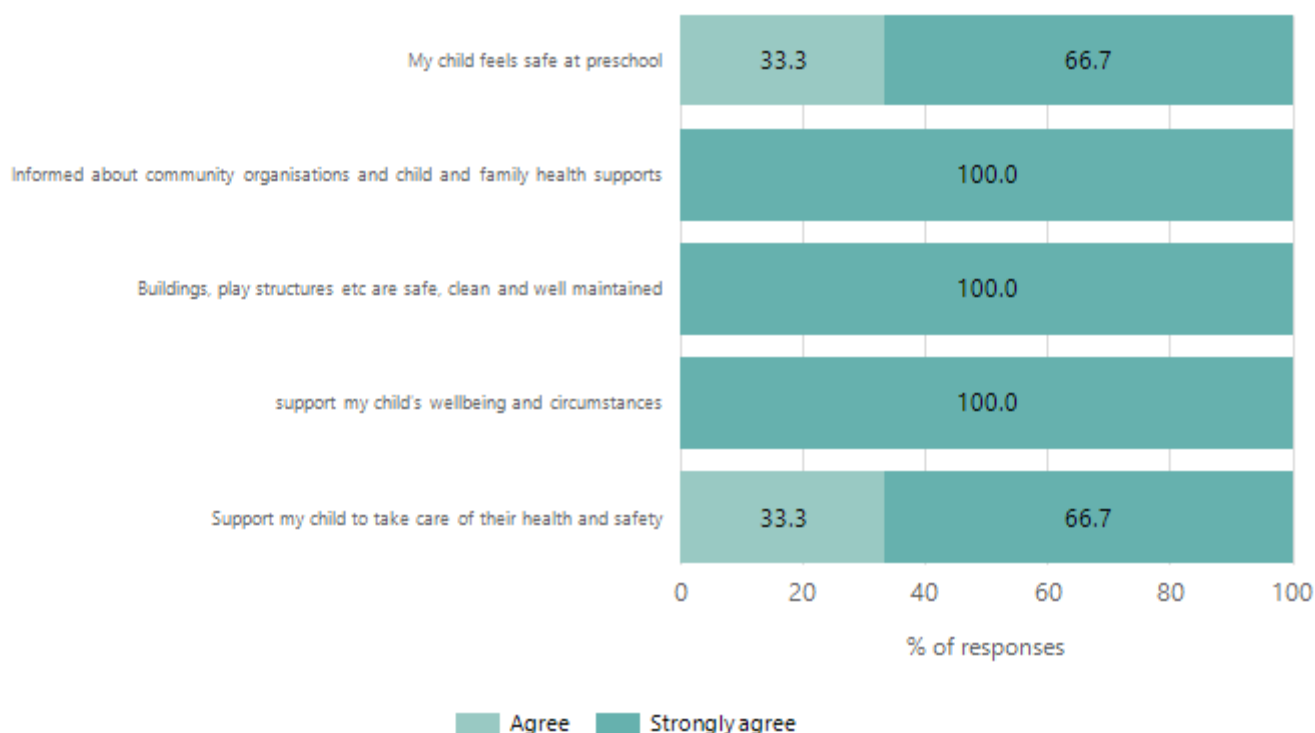
Data Source: 2024 Department for Education Preschool Family Opinions Survey, Term 3 2024.

## Quality of Teaching and Learning



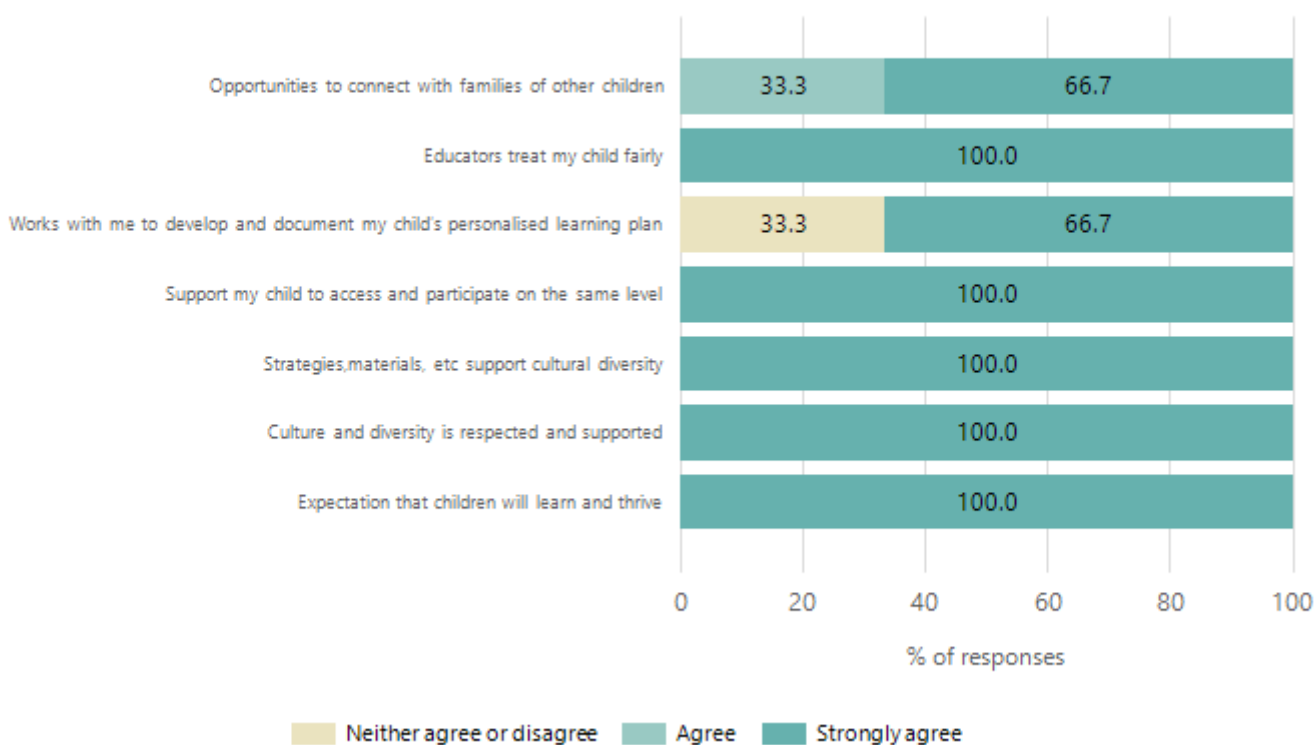
Data Source: 2024 Department for Education Preschool Family Opinions Survey, Term 3 2024.

## Safety, Health and Wellbeing



Data Source: 2024 Department for Education Preschool Family Opinions Survey, Term 3 2024.

## Support and Inclusion



Data Source: 2024 Department for Education Preschool Family Opinions Survey, Term 3 2024.

## Destination Schools

Feeder Schools (Site number - Name)	2022	2023	2024
0299 - Murray Bridge North School		6.3%	11.5%
0302 - Mypolonga Primary School		4.5%	5.3%
0950 - Murray Bridge South Primary School	5.3%	9.9%	15.0%
9049 - St Joseph's School - Murray Bridge		5.4%	9.7%
9999 - Unknown	89.5%	70.3%	52.2%

Note: The data is collected in term 3. It does not reflect actual schools enrolled in by existing preschool children. A blank cell indicates there was no data for students enrolled.

Data Source: Department for Education Destination Data Report, 2024.

## Highest Qualifications held by the teaching workforce and workforce composition

All teachers at this school are qualified and registered with the SA Teachers Registration Board.

Qualification Level	Number of Qualifications
Bachelor's degrees or Diplomas	5
Postgraduate Qualifications	2

Data Source: Data extracted from Mandatory Workforce Information Collections as on the last pay date of June 2024. As self-reported by staff in the system.

Please note: Data includes staff who are Actively employed and on extended paid leave. Please note only the highest qualification of the Teaching staff is reported. Excludes any number of other certifications earned.

### Workforce composition including indigenous staff

	Teaching Staff		Non-Teaching Staff	
	Indigenous	Non-Indigenous	Indigenous	Non-Indigenous
Full-Time Equivalents	0.7	4.4	0.7	8.3
Persons	1.0	6.0	1.0	11.0

Data Source: Data extracted from Mandatory Workforce Information Collection as on the last pay date of June 2024.

Please note: Data includes staff who are actively employed and on extended paid leave. "Indigenous category" is self-reported by staff in the system.

## Financial Statement

Funding Source	Amount
Grants: State	\$1,177,570.81
Grants: Commonwealth	-
Parent Contributions	\$24,733
Fund Raising	-
Other	\$3,000

Data Source: School supplied data.