

## 2024 annual report to the Community

# Loxton Preschool Centre Inc

Loxton Preschool Centre Inc number: 6524

Partnership: Renmark Loxton



Preschool director:

Stephanie Semmler



Date of endorsement:

26/05/2025



Government  
of South Australia  
Department for Education

# Context Statement

Information about Loxton Preschool Centre Inc is available on the centres website, as well as the Australian Childrens Education and Care Quality Authority (ACECQA) website.

## Governing Council Report

It’s a pleasure to report on what was a highly successful 2024 for the Loxton Preschool Centre. The year started with new leadership in Stephanie Semmler as acting director and a mostly new-look governing council. In times when volunteers are in short supply, Loxton Preschool Centre was fortunate to fill all governing council positions with a healthy number of members, which is a credit to the centre. The governing council quickly set out its fundraising target and began planning events in a bid to promote the centre and ensure the facility is equipped to deliver the best outcomes for students. The key directions of the governing council were simple in nature; that is to support children and families to have the best preschool experience, promotion to ensure the kindy’s strong reputation is retained and fundraising to support the facility. Disadvantaged children and those with additional needs continued to be a strong focus of the governing council and staff. The diligence of the council, together with the centre’s staff, has ensured the preschool remains in strong financial position and is continuing to adapt to meet the needs of the children and community it serves. One key highlight of the 2024 year was Loxton Preschool being chosen as a trial site for kindy care. This initiative, which was supported by the governing council, helped families with out of hours care for children at a low cost. Kindy Care supported family units both financially and holistically. It also supported children by maintaining continuity, reduced transitions and was appropriate to the children’s developmental needs. Loxton Preschool was just one of the 20 trial sites and was a credit to the staff who led and facilitated the pilot program. It’s fantastic to know Kindy Care is continuing into 2025. Enrolments for 2024 were down considerably from 2023 numbers and were similar to that of 2022 with just under 50 students throughout the year. These enrolment figures were a key focus for the governing council, ensuring our fundraisers were not only raising funds, but were visible to our community. The preschool received overwhelming support from local businesses, which enabled the success of each event. With a fundraising goal of \$5000, the governing council was just shy of its 2024 target. However, given the lower enrolment numbers and cost of living crisis, it was a remarkable effort and the outgoing governing council should be proud of the way it’s been able to support the centre. A big thank you must go to outgoing acting director Stephanie Semmler for her dedication to the site in 2024. With that, a big welcome to Nadia Clarke and I wish the Loxton Preschool Centre all the very best for what I am sure will be a big 2025.

## Preschool Attendance

	Term 1	Term 2	Term 3	Term 4
2021 centre	87.9%	84.3%	90.8%	87.3%
2022 centre	91.3%	77.3%	82.3%	84.7%
2023 centre	85.4%	73.3%	85.1%	82.4%
2024 centre	87.3%		83.4%	

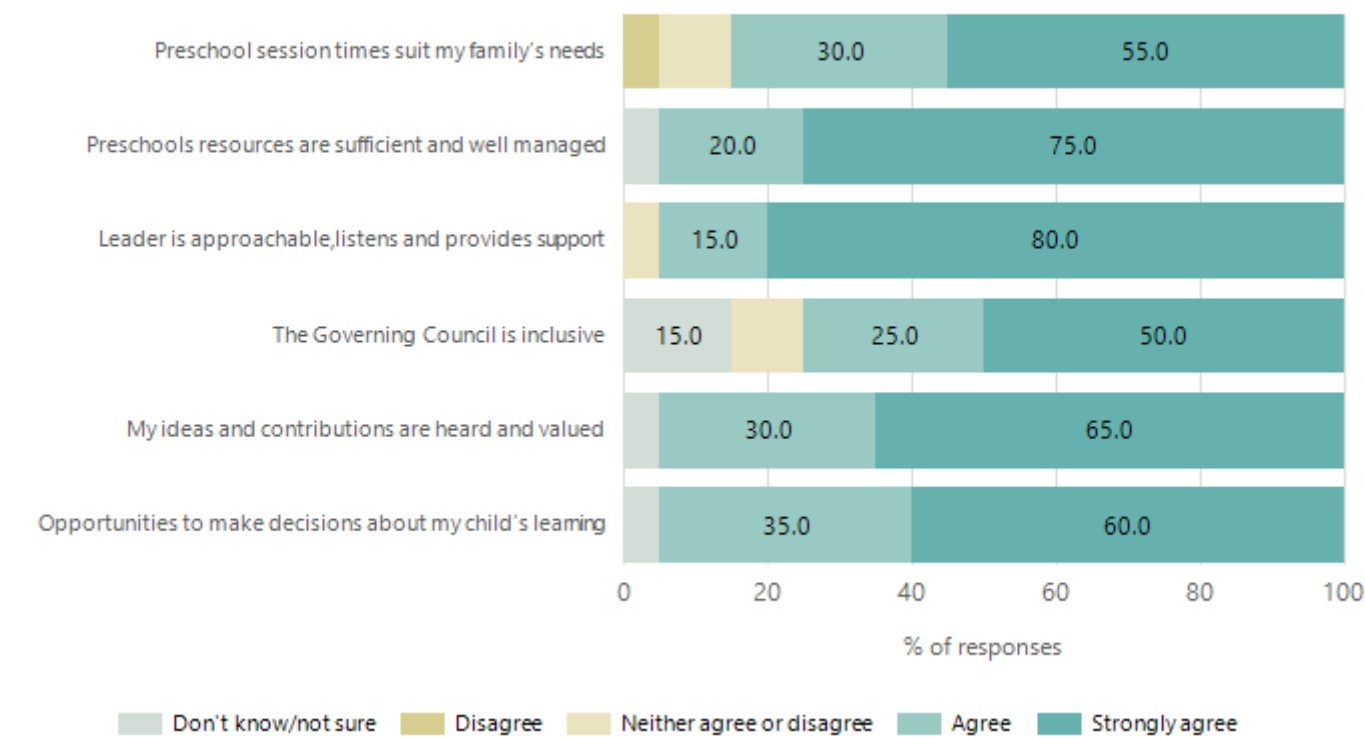
Based on attendances recorded in the two-week reference period each term. Data for eligible enrolments as described in the department's Enrolment policy. Attendance rates may differ to previous reporting with the transfer from calculations based on deemed attendance to actual attendance using booked hours divided by attended hours. Data Source: Department for Education Attendance Data, Semester 1 Report 2024. A blank cell indicates there we no students enrolled.

## Attendance Comment

In South Australia, preschool attendance is not compulsory, but it is strongly encouraged. Preschool gives children the best opportunity to develop skills, which prepare them for school. These benefits include establishing positive routines and habits, friendships and connections as well as developing communication, problem-solving and creative skills. All children are entitled to access a preschool program over 4 terms the year before they start school.

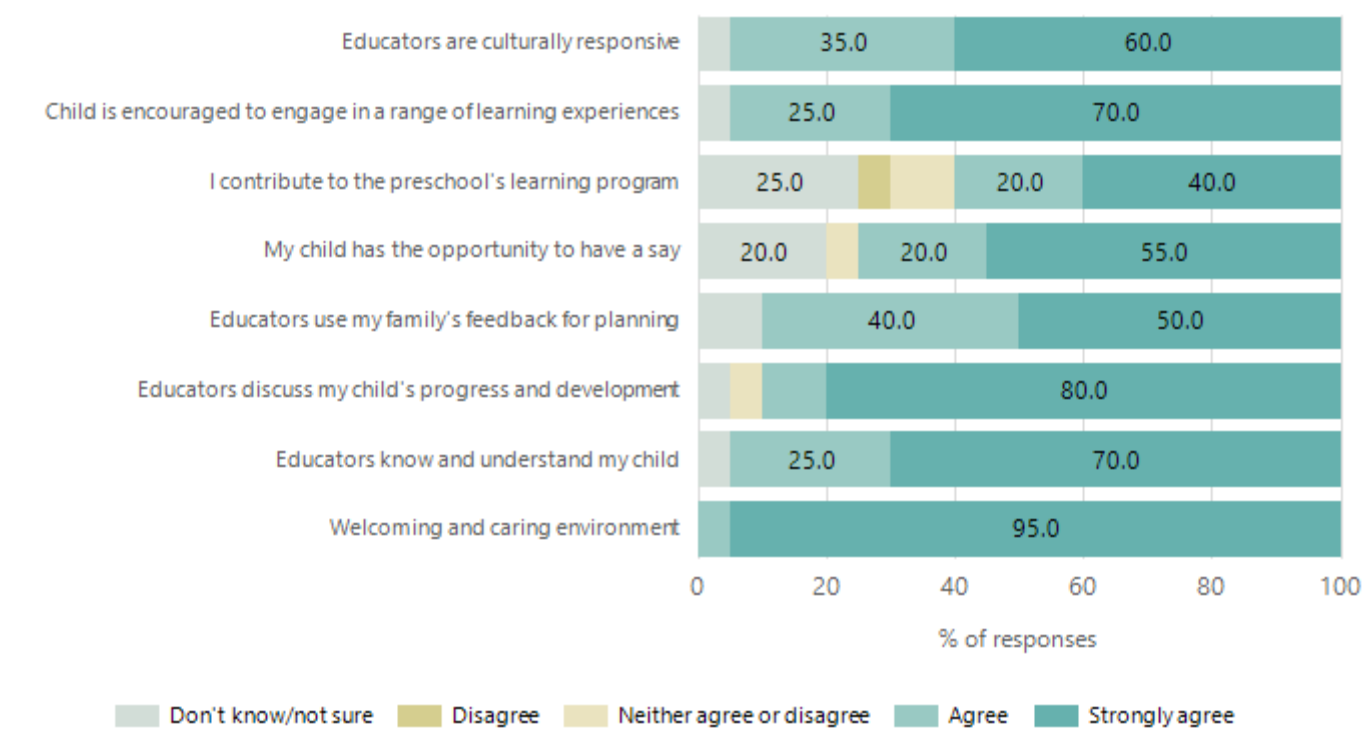
# Preschool Family Opinion Survey

## Governance, Leadership and Management



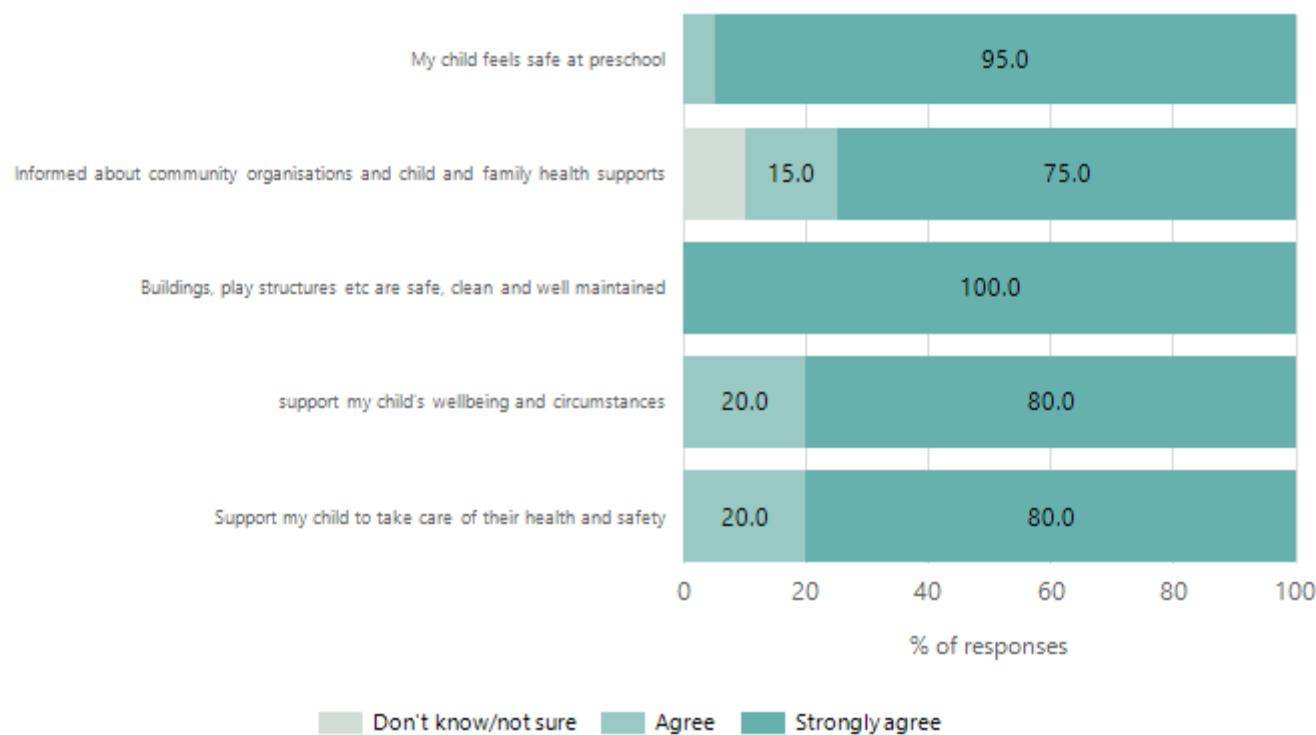
Data Source: 2024 Department for Education Preschool Family Opinions Survey, Term 3 2024.

## Quality of Teaching and Learning



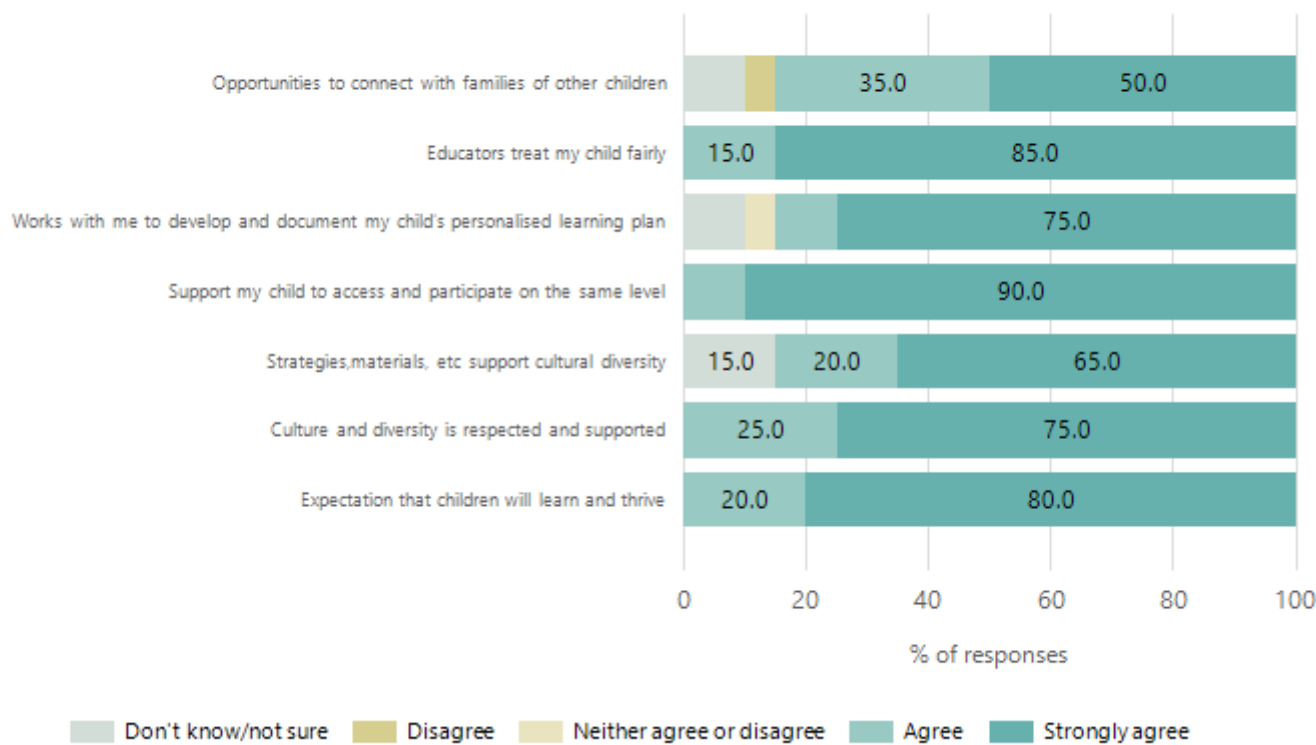
Data Source: 2024 Department for Education Preschool Family Opinions Survey, Term 3 2024.

## Safety, Health and Wellbeing



Data Source: 2024 Department for Education Preschool Family Opinions Survey, Term 3 2024.

## Support and Inclusion



Data Source: 2024 Department for Education Preschool Family Opinions Survey, Term 3 2024.

# Destination Schools

Feeder Schools (Site number - Name)	2022	2023	2024
0532 - Berri Primary School	4.1%		
0760 - Loxton Primary School	59.2%	64.0%	71.7%
9041 - St Albert's Catholic School	12.2%	8.0%	6.7%
9101 - Loxton Lutheran School	10.2%	16.0%	11.7%
9999 - Unknown	12.2%	9.3%	10.0%

Note: The data is collected in term 3. It does not reflect actual schools enrolled in by existing preschool children. A blank cell indicates there was no data for students enrolled.

Data Source: Department for Education Destination Data Report, 2024.

# Highest Qualifications held by the teaching workforce and workforce composition

All teachers at this school are qualified and registered with the SA Teachers Registration Board.

Qualification Level	Number of Qualifications
Bachelor's degrees or Diplomas	3

Data Source: Data extracted from Mandatory Workforce Information Collections as on the last pay date of June 2024. As self-reported by staff in the system.

Please note: Data includes staff who are Actively employed and on extended paid leave. Please note only the highest qualification of the Teaching staff is reported. Excludes any number of other certifications earned.

## Workforce composition including indigenous staff

	Teaching Staff		Non-Teaching Staff	
	Indigenous	Non-Indigenous	Indigenous	Non-Indigenous
Full-Time Equivalents	0.0	2.7	0.0	1.4
Persons	0.0	3.0	0.0	3.0

Data Source: Data extracted from Mandatory Workforce Information Collection as on the last pay date of June 2024.

Please note: Data includes staff who are actively employed and on extended paid leave.  
"Indigenous category" is self-reported by staff in the system.

# Financial Statement

Funding Source	Amount
Grants: State	\$590 447.49
Grants: Commonwealth	
Parent Contributions	\$12 527.50
Fund Raising	\$4 653.04
Other	\$3013.60

Data Source: School supplied data.