

2024 annual report to the Community

Ocean View College Children's Centre

Ocean View College Children's Centre number: 5658

Partnership: Le Fevre Peninsula



Preschool director:

Kelly Squire

Date of endorsement:

18/02/2025



Government
of South Australia
Department for Education

Context Statement

The Ocean View College Children’s Centre (OVCCC) provides a preschool program to an average of twenty children. We currently have 9 Aboriginal children and a number of children have additional/developmental needs and/or trauma backgrounds. OVCCC has a Director, Early Childhood Teacher, and Early Childhood Educator.

The OVCCC supplies an Occasional Care program coordinated by the Admin Officer and employs two ECW’s to run the program which is always well attended. OVCCC has a Speech Pathologist and Occupational Therapist who attend three days per fortnight to support staff, parents, and children. Currently, the SP/OT team supply the Occasional Care Team with targeted activities for the occasional care children to participate in. The SP/OT team are available to provide families with childhood development assessments and referrals. Referrals into SP/OT clinic are via CAFHS, Preschool Director, Learning Together staff, CDC, and self-referral.

OVCCC has a midwife clinic every Tuesday managed by the Women’s and Children’s Hospital and supported by OVCCC’s Admin Officer. The OVCCC Preschool Director is scoping ideas to increase post-natal opportunities for parents / carers and their babies.

Relationships Australia SA provide two Parenting Programs per term at OVCCC. The CDC and RASA refer parents into their programs which are administrated by RASA. OVCCC has provided crèche support. RASA supplies free holiday activities for families at OVCCC which provide insights into emotional regulation, attachment, and positive parenting approaches. OVCCC provides RASA with access to counselling spaces to support parents in our local community with increased access to counselling and parenting support.

Governing Council Report

Ocean View College Children’s Centre - Under the leadership of Kelly Squire, the Children’s Centre continued its focus on early learning, enrolment growth, and community engagement. Playgroups were reorganised into smaller groups, resulting in better engagement. There was an increased focus on early mathematics and data tracking. Strategies are being used to support children with regulation and resilience. I would like to thank Kelly for her wonderful work and dedication to the children and families that attend the Centre.

2024 has been a year of growth, engagement, and strategic improvements at Ocean View College. The Governing Council remains committed to supporting the school leadership team, staff, and students in achieving excellence. I extend my sincere gratitude and thanks to all council members, school staff, and families for their contributions throughout the year.

Yvonne Boschiero
Governing Council Chair

Preschool Attendance

	Term 1	Term 2	Term 3	Term 4
2021 centre	91.2%	73.9%	80%	91.6%
2022 centre	81.2%	87.1%	86.9%	87.9%
2023 centre	83.5%	77.3%	75.2%	67.4%
2024 centre	88.8%	78.3%	78.4%	75.3%

Based on attendances recorded in the two-week reference period each term. Data for eligible enrolments as described in the department's Enrolment policy. Attendance rates may differ to previous reporting with the transfer from calculations based on deemed attendance to actual attendance using booked hours divided by attended hours. Data Source: Department for Education Attendance Data, Semester 1 Report 2024. A blank cell indicates there we no students enrolled.

Attendance Comment

In South Australia, preschool attendance is not compulsory, but it is strongly encouraged. Preschool gives children the best opportunity to develop skills, which prepare them for school. These benefits include establishing positive routines and habits, friendships and connections as well as developing communication, problem-solving and creative skills. All children are entitled to access a preschool program over 4 terms the year before they start school.



PLAYGROUPS – our site hosts 3 playgroups on a weekly basis each term.

.SPOT is coordinated by our speech pathologist & occupational therapist and targets supporting children with fine/gross motor skills, as well as role modelling for parents

.Baby group is run by our speech pathologist & preschool teacher

.Learning Together group is run by a team of educators, with a focus on providing families with everyday experiences to support their child's curiosity

What do our families enjoy about our Community Playgroup?

.social opportunities for my child

.learning opportunities both inside and out

.a calm, welcoming space. Not over stimulating

.socialisation. My child is excited to come each week

.different activities each week for my child to engage in

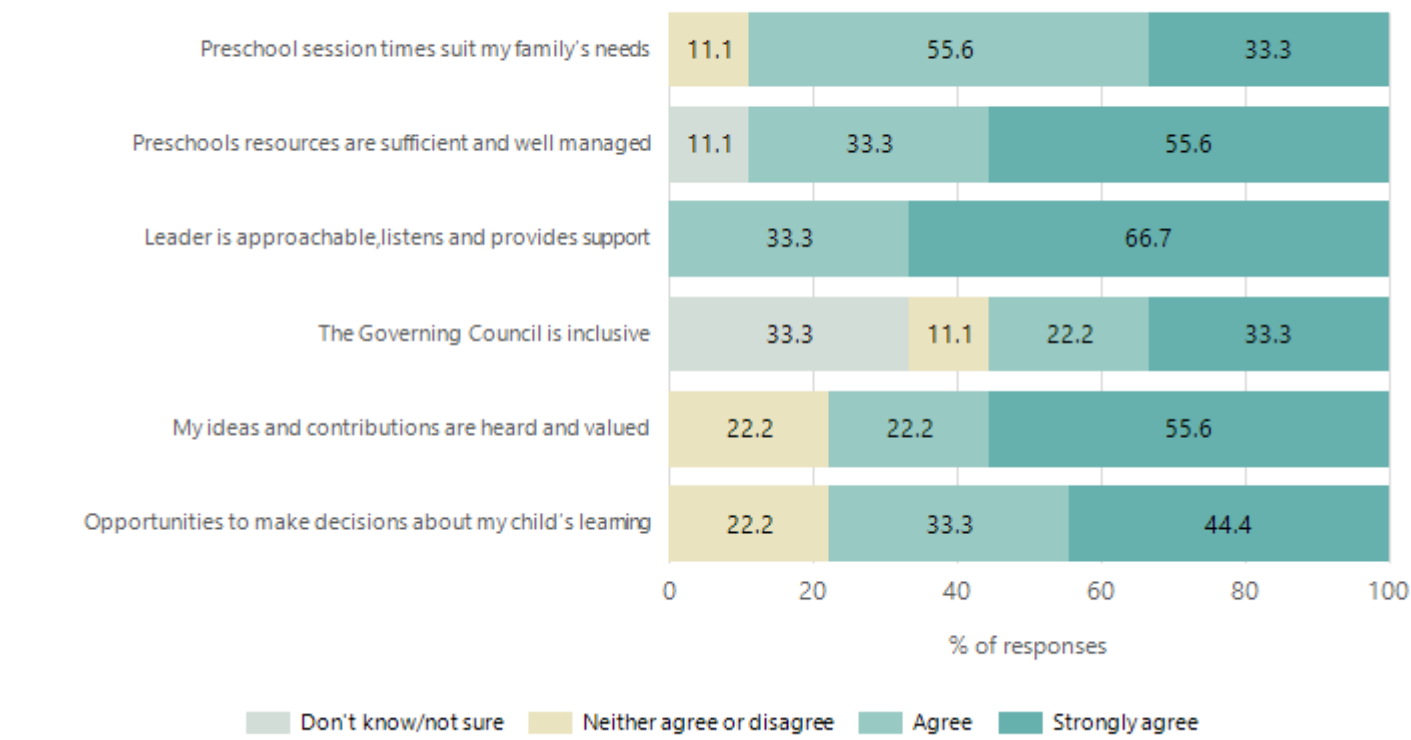
.opportunity for my child to interact with other children his age

.the arts and crafts activities offered, allow opportunities for my child to be creative

.we love it here. It's so clean

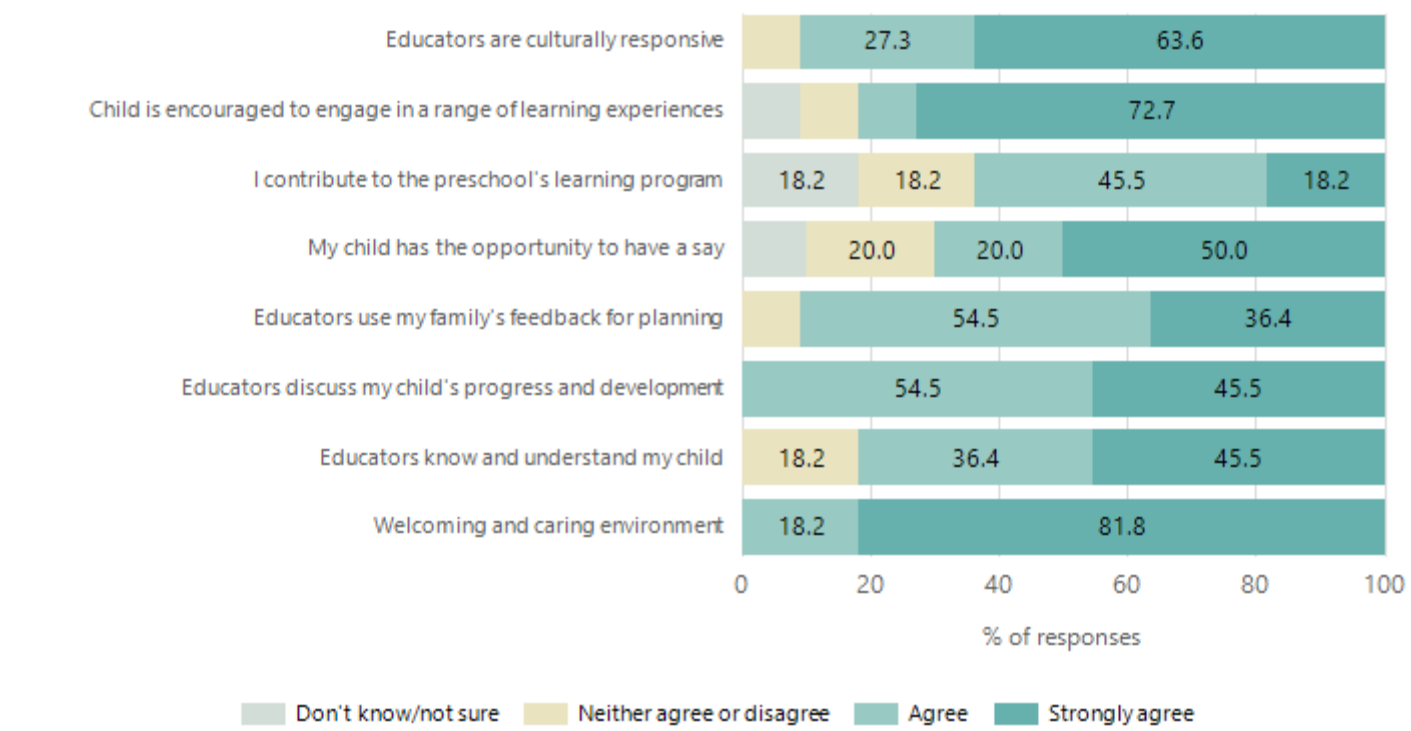
Preschool Family Opinion Survey

Governance, Leadership and Management



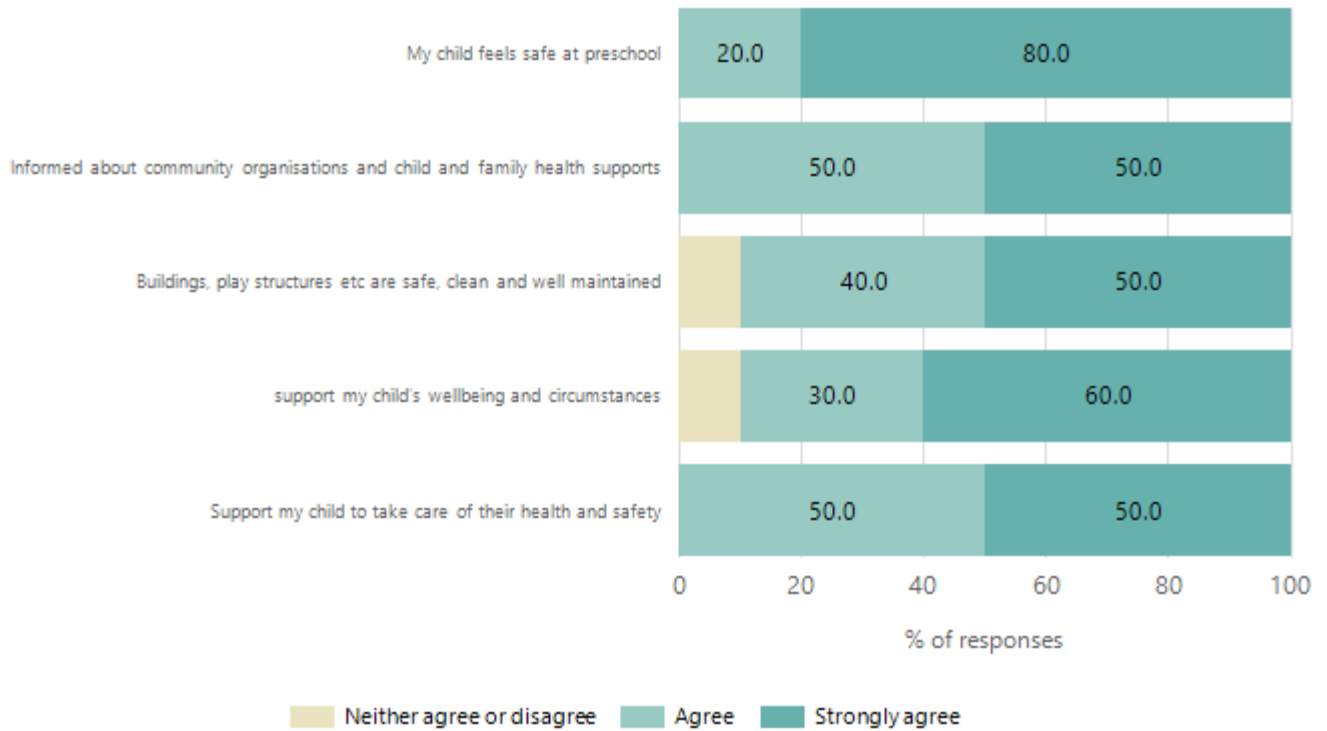
Data Source: 2024 Department for Education Preschool Family Opinions Survey, Term 3 2024.

Quality of Teaching and Learning



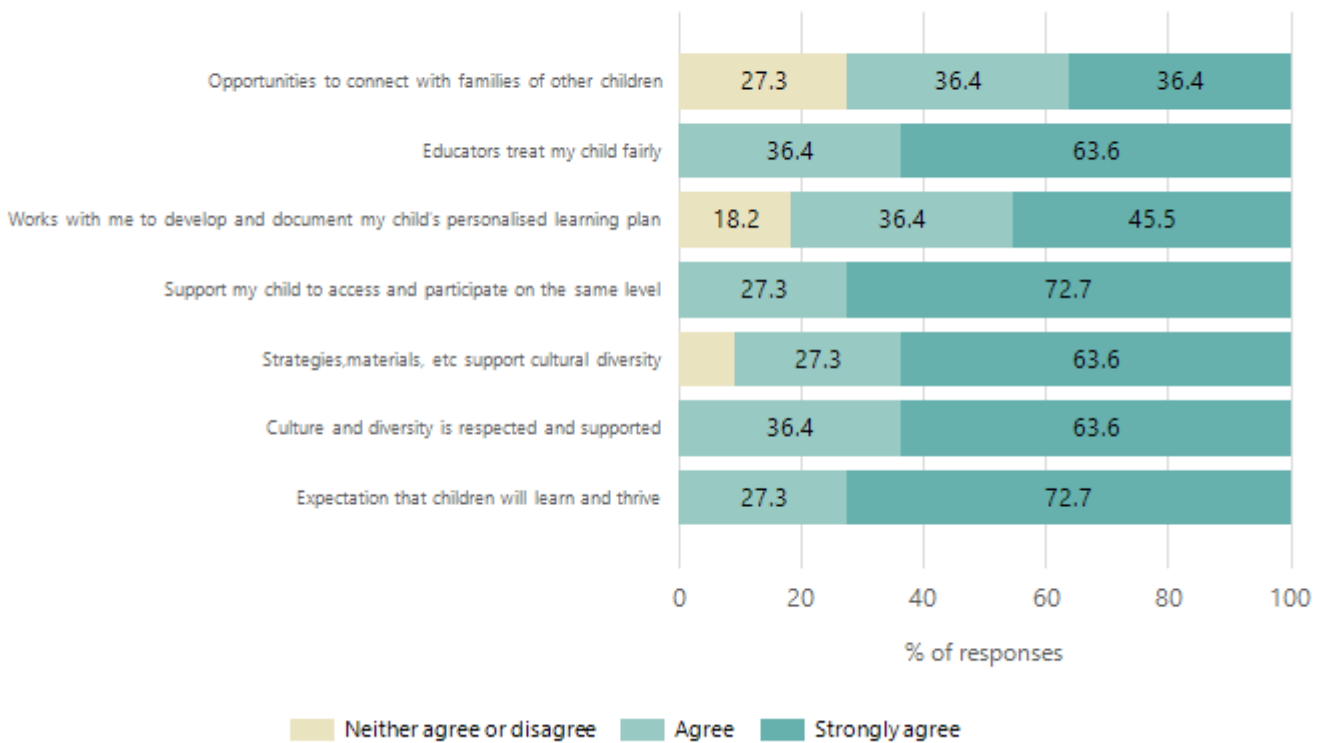
Data Source: 2024 Department for Education Preschool Family Opinions Survey, Term 3 2024.

Safety, Health and Wellbeing



Data Source: 2024 Department for Education Preschool Family Opinions Survey, Term 3 2024.

Support and Inclusion



Data Source: 2024 Department for Education Preschool Family Opinions Survey, Term 3 2024.

Destination Schools

Feeder Schools (Site number - Name)	2022	2023	2024
0908 - Ocean View P-12 College	12.5%		25.9%
9999 - Unknown	87.5%	100.0%	74.1%

Note: The data is collected in term 3. It does not reflect actual schools enrolled in by existing preschool children. A blank cell indicates there was no data for students enrolled.

Data Source: Department for Education Destination Data Report, 2024.



Down is our earth
Up is our sky.
There are my friends
And here stand I.
Two eyes to see, two ears to hear
A heart for love and fun.
Here are my hands to join with mine.
We stand together hand in hand
To respect the Kurna people of this land.
Naa Marni.

Highest Qualifications held by the teaching workforce and workforce composition

All teachers at this school are qualified and registered with the SA Teachers Registration Board.

Qualification Level	Number of Qualifications
Bachelor's degrees or Diplomas	1
Postgraduate Qualifications	1

Data Source: Data extracted from Mandatory Workforce Information Collections as on the last pay date of June 2024. As self-reported by staff in the system.

Please note: Data includes staff who are Actively employed and on extended paid leave. Please note only the highest qualification of the Teaching staff is reported. Excludes any number of other certifications earned.

Workforce composition including indigenous staff

	Teaching Staff		Non-Teaching Staff	
	Indigenous	Non-Indigenous	Indigenous	Non-Indigenous
Full-Time Equivalents	0.0	1.7	0.0	2.1
Persons	0.0	2.0	0.0	5.0

Data Source: Data extracted from Mandatory Workforce Information Collection as on the last pay date of June 2024.

Please note: Data includes staff who are actively employed and on extended paid leave. "Indigenous category" is self-reported by staff in the system.

Financial Statement

Funding Source	Amount
Grants: State	\$510 110
Grants: Commonwealth	0
Parent Contributions	\$3 754
Fund Raising	0
Other	\$5 982

Data Source: School supplied data.