

2024 annual report to the Community

West Lakes Shore Kindergarten

West Lakes Shore Kindergarten number: 5654

Partnership: Western Adelaide Shores



Preschool director:

Mandy Klessens

MJKlessens

Date of endorsement:

14/03/2025



Government
of South Australia
Department for Education

Context Statement

Information about West Lakes Shore Kindergarten is available on the centres website, as well as the Australian Children’s Education and Care Quality Authority (ACECQA) website.

Governing Council Report

With four of my children having attended WLSK Kindy, I've been fortunate to be a part of this wonderful community for several years. This is my second year being part of the Governing Council, where we met once each term at Kindy. These meetings provided a valuable opportunity to connect with staff and fellow council members while contributing to shaping the future of the Kindy. We also maintained communication through email to stay updated on various initiatives throughout the year. I joined the Governing Council to become more involved with the Kindy and to support the staff in maintaining the incredible environment they've created for all our children. It has been a rewarding experience to work alongside such a dedicated group of staff and parents, all focused on the shared goal of ensuring our children have the best possible year at Kindy.

This year, my son Jack had the privilege of experiencing the care, learning, and fun that make WLSK such a special place. The year has been nothing short of fantastic, filled with moments of joy, growth, and learning for all the children. The staff's passion, kindness, and unwavering commitment to each child are exceptional, and we are incredibly fortunate to have such a dedicated team guiding our children's early learning journeys. The programs they run foster creativity, curiosity, and a strong sense of community, making each day at Kindy something for the children to look forward to.

Throughout the year, our children participated in a range of enriching excursions and incursions. We started and ended the year with our Kindy beach days which were a great way for families to connect and build relationships. The children enjoyed an exciting visit to the Post Office and the Marine Discovery Centre, where they had the opportunity to explore and learn about the world around them.

We also had visits from firefighters and the Animals Anonymous team, as well as several parents who generously shared their cultures, careers, and skills with the children. These included memorable cooking experiences, such as pizza, stir fry and the infamous egggy bread! It's incredible how much our families and community have to offer. These experiences were invaluable in expanding the children's knowledge, providing hands-on, interactive learning, and creating lasting memories.

Thanks to the Kindy community, our fundraising efforts this year were a resounding success. The Easter raffle and Olymp-a-thon were standout events, with many families coming together to contribute to the raffle, source donations for the silent auction, and bake goods for the cake stall. The overwhelming support and generosity played a huge role in making these events such a success. Members of our wonderful Kindy community also came together after the unfortunate incident with the chickens to repair and improve the area, allowing us to welcome the chickens back once again.

We also saw a smooth and successful transition as we farewelled our mid-year Kindy children and welcomed the new mid-year children. As we wrapped up the year, we had another successful farewell, where the children sang songs and shared a beautiful afternoon tea brought in by families. It was a heart-warming way to celebrate a year full of growth and learning.

It's been another incredible year, and the staff at WLSK have played such a big part in shaping our children's confidence, curiosity, and love for learning. Thank you, West Lakes Shore Kindy, for making this year so beautiful and memorable.

Tanya Brennan
Governing Council Chairperson

Preschool Attendance

| | Term 1 | Term 2 | Term 3 | Term 4 |
|-------------|--------|--------|--------|--------|
| 2021 centre | 94.4% | 86.9% | 94.3% | 85.3% |
| 2022 centre | 89.3% | 84.5% | 55.1% | 92.9% |
| 2023 centre | 90.5% | 89.8% | 86.1% | 89.6% |
| 2024 centre | 90.4% | | 85.4% | |

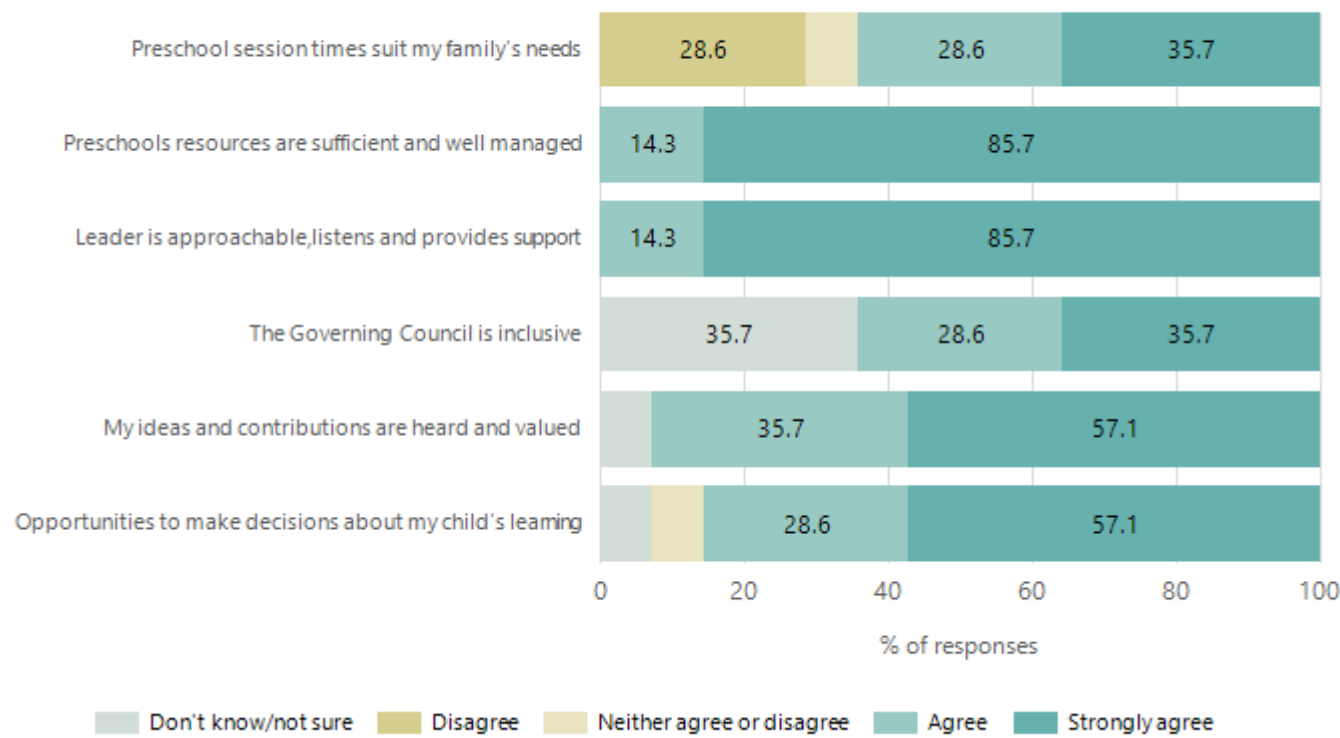
Based on attendances recorded in the two-week reference period each term. Data for eligible enrolments as described in the department's Enrolment policy. Attendance rates may differ to previous reporting with the transfer from calculations based on deemed attendance to actual attendance using booked hours divided by attended hours. Data Source: Department for Education Attendance Data, Semester 1 Report 2024. A blank cell indicates there we no students enrolled.

Attendance Comment

In South Australia, preschool attendance is not compulsory, but it is strongly encouraged. Preschool gives children the best opportunity to develop skills, which prepare them for school. These benefits include establishing positive routines and habits, friendships and connections as well as developing communication, problem-solving and creative skills. All children are entitled to access a preschool program over 4 terms the year before they start school.

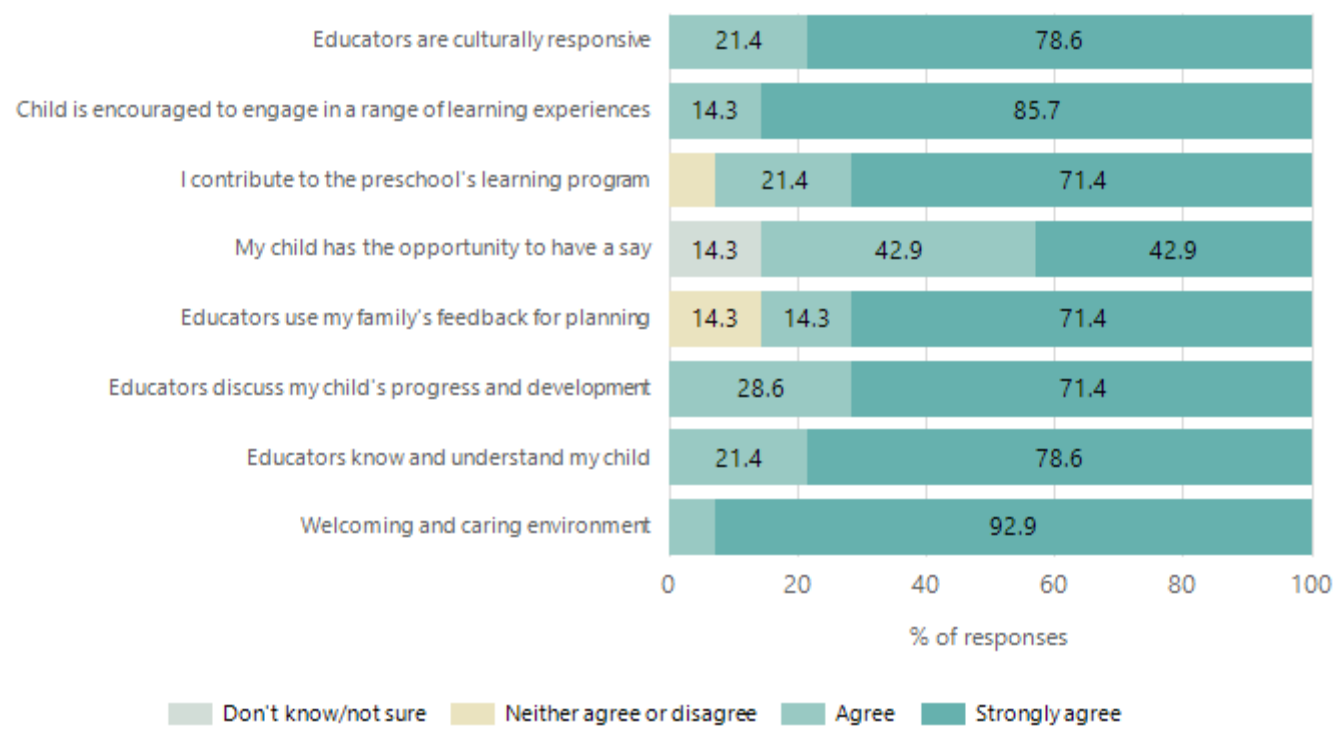
Preschool Family Opinion Survey

Governance, Leadership and Management



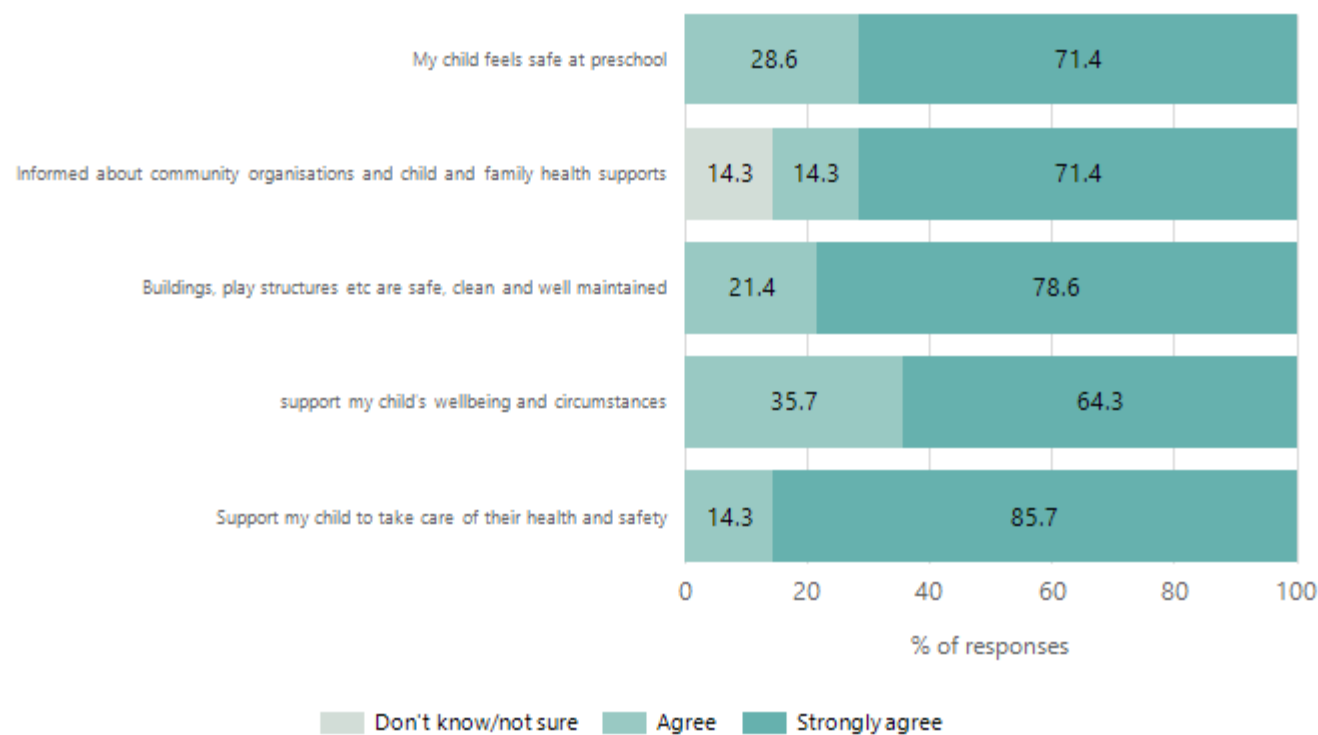
Data Source: 2024 Department for Education Preschool Family Opinions Survey, Term 3 2024.

Quality of Teaching and Learning



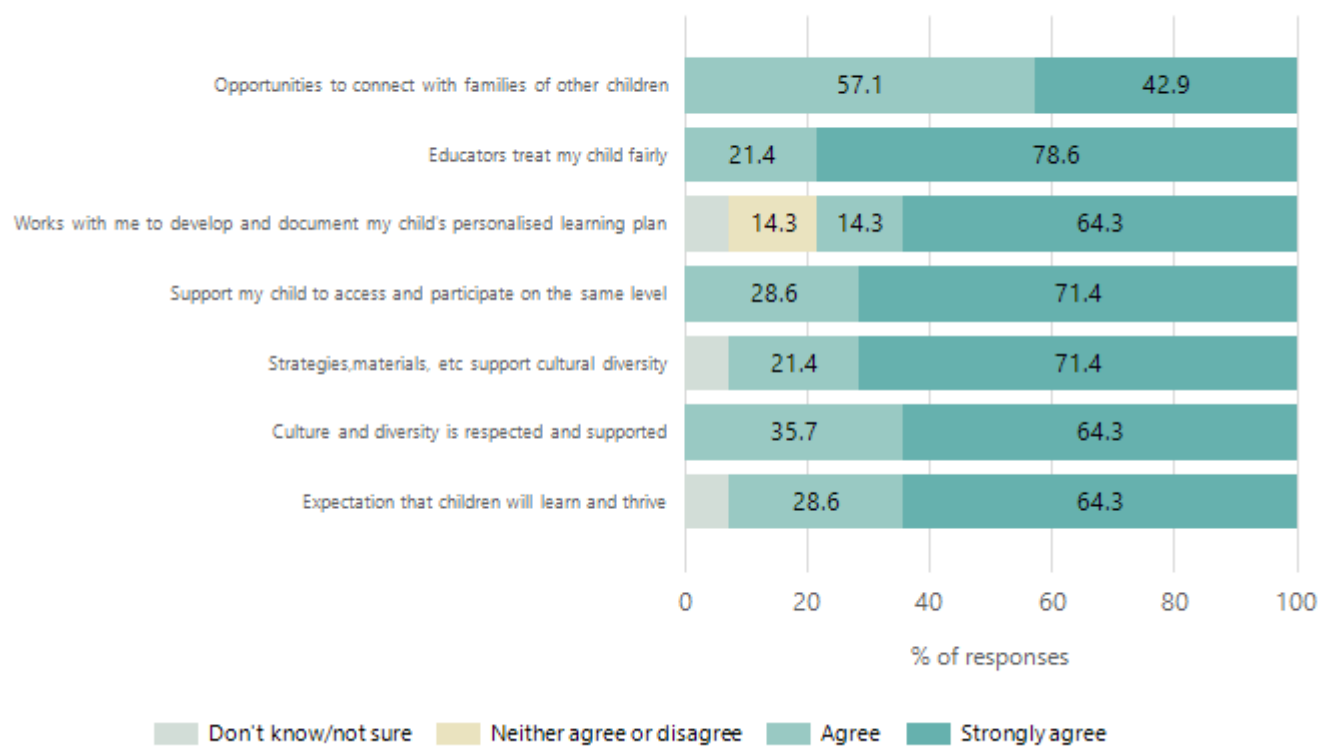
Data Source: 2024 Department for Education Preschool Family Opinions Survey, Term 3 2024.

Safety, Health and Wellbeing



Data Source: 2024 Department for Education Preschool Family Opinions Survey, Term 3 2024.

Support and Inclusion



Data Source: 2024 Department for Education Preschool Family Opinions Survey, Term 3 2024.

Destination Schools

| Feeder Schools (Site number - Name) | 2022 | 2023 | 2024 |
|---------------------------------------|-------|-------|-------|
| 1246 - West Lakes Shore School | 73.9% | 56.9% | 46.5% |
| 8370 - Star of the Sea School | 6.2% | | 5.8% |
| 9005 - Our Lady Queen of Peace School | 3.1% | | |
| 9999 - Unknown | 15.4% | 34.7% | 47.7% |

Note: The data is collected in term 3. It does not reflect actual schools enrolled in by existing preschool children. A blank cell indicates there was no data for students enrolled.

Data Source: Department for Education Destination Data Report, 2024.

Highest Qualifications held by the teaching workforce and workforce composition

All teachers at this school are qualified and registered with the SA Teachers Registration Board.

| Qualification Level | Number of Qualifications |
|--------------------------------|--------------------------|
| Bachelor's degrees or Diplomas | 3 |

Data Source: Data extracted from Mandatory Workforce Information Collections as on the last pay date of June 2024. As self-reported by staff in the system.

Please note: Data includes staff who are Actively employed and on extended paid leave. Please note only the highest qualification of the Teaching staff is reported. Excludes any number of other certifications earned.

Workforce composition including indigenous staff

| | Teaching Staff | | Non-Teaching Staff | |
|-----------------------|----------------|----------------|--------------------|----------------|
| | Indigenous | Non-Indigenous | Indigenous | Non-Indigenous |
| Full-Time Equivalents | 0.0 | 2.7 | 0.0 | 1.6 |
| Persons | 0.0 | 3.0 | 0.0 | 2.0 |

Data Source: Data extracted from Mandatory Workforce Information Collection as on the last pay date of June 2024.

Please note: Data includes staff who are actively employed and on extended paid leave. "Indigenous category" is self-reported by staff in the system.

Financial Statement

| Funding Source | Amount |
|----------------------|-----------|
| Grants: State | 33,000.00 |
| Grants: Commonwealth | |
| Parent Contributions | 42,000.00 |
| Fund Raising | 4,100.00 |
| Other | |

Data Source: School supplied data.