



2024 annual report to the Community

## Lucy Morice Kindergarten

Lucy Morice Kindergarten number: 5631

Partnership: Adelaide - Prospect



Preschool director:

Karen McEntee

Date of endorsement:

24/06/2025



# Context Statement

Lucy Morice Kindergarten was opened in 1935, making it 90 years old in 2025. The building reflects its heritage and are well maintained. Large, shaded grounds make access to outdoors accessible through the summer and a large veranda covering the sand pit and activity tables enable winter access. The gardens of the kindergarten are a welcome play and learning environment for 44 children and the occasional care program for 8 over 2-year-old children. There is access for children and staff with disabilities on paved pathways and a ramp to the entrance to the kindergarten. Access to Occasional Care is also available for disabled.

## Governing Council Report

### 2024 - Reflection on the Kindergarten Year

As I reflect on the past year, I'm filled with pride and emotion. It feels like just yesterday we were getting ready for the first day of kindergarten at LMK—from the transition visits last year to the very first day, packing everything we needed, practicing how to open their lunchboxes, and reassuring our children (and ourselves) that everything would be okay. And now, here we are a year later, at the end of this beautiful chapter, watching our little ones graduate.

LMK itself has been such a special place—a beautiful space with shady trees and open areas for the kids to explore at their own pace. It's a place that changes with the seasons, offering so many opportunities for curiosity and discovery.

This year has been a whirlwind of growth and change. Friendships were formed, conflicts resolved, and confidence blossomed in such a short time. We went from teary separations to cheerful goodbyes, and each proud showing of artwork or milestone reached felt like a victory—not just for them but for all of us. Seeing the joy on their faces at pick-up, after a busy day in the sandpit, climbing, painting, or creating, has been heartwarming.

We might not always get a full rundown of the day or all the exciting things that happened, but throughout the week, little gems of learning or curiosity would pop up—questions about things they'd learned at kindergarten or stories they'd share.

Some of the highlights from this year include:

- **Dancebeatz:** a hit with the children and a joy to watch
- **Stay and Play sessions:** A chance to share their world with us.
- **Trent Hill's visit:** Sharing his stories and incredible skills.
- **Book Week:** being able to come in and read to the children.
- **Mother's Day and Father's Day cards:** lovely keepsakes
- **Mid-year and end-of-year celebrations**
- **Treasure Box:** Each child got to share something
- **Nature Education:** Especially meeting Shelley and the baby possum.
- **Kindergarten songs and stories:** Which became favorites at home too.
- **Daily rituals like raising the flag and doing their jobs**
- **Gardening projects:** Planting flowers, nurturing the garden, and the compost bin
- **Playground dates:** Strengthening friendships and connecting with other families.
- **Governing Council:** The dedication of parent volunteers helping to support the kindergarten.
- **Occasional Care:** Providing so much value to families and the kindergarten community.

A special thanks to the teachers, who did so much more than guide and educate our children. They tailored learning programs to meet our children where they are, encouraged their unique strengths, and ensured the kindergarten ran smoothly behind the scenes—managing the paperwork, standards, and logistics that us parents often don't see.

## Preschool Attendance

	Term 1	Term 2	Term 3	Term 4
2021 centre	89.8%	91.3%	92.4%	86.8%
2022 centre	86.7%	83.5%	84.2%	82.2%
2023 centre	82.3%	87.7%	85.3%	87.3%
2024 centre	91.5%		86.6%	

Based on attendances recorded in the two-week reference period each term. Data for eligible enrolments as described in the department's Enrolment policy. Attendance rates may differ to previous reporting with the transfer from calculations based on deemed attendance to actual attendance using booked hours divided by attended hours. Data Source: Department for Education Attendance Data, Semester 1 Report 2024. A blank cell indicates there were no students enrolled.

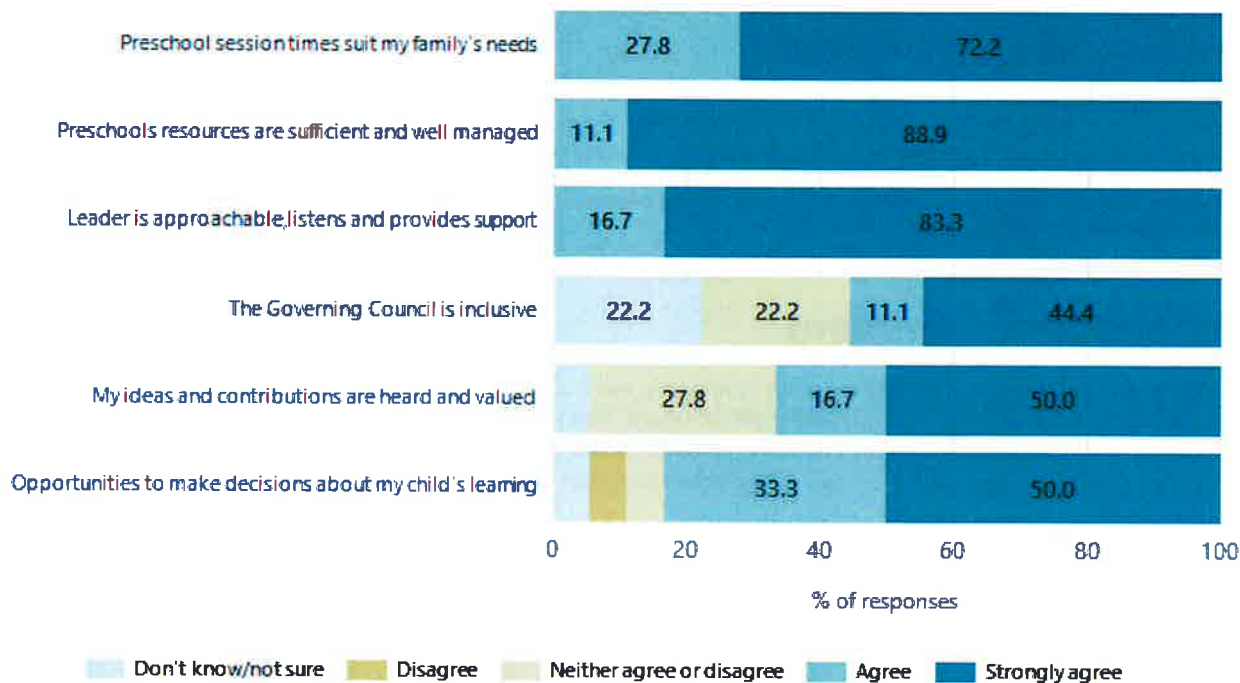
## Attendance Comment

In South Australia, preschool attendance is not compulsory, but it is strongly encouraged. Preschool gives children the best opportunity to develop skills, which prepare them for school. These benefits include establishing positive routines and habits, friendships and connections as well as developing communication, problem-solving and creative skills. All children are entitled to access a preschool program over 4 terms the year before they start school.



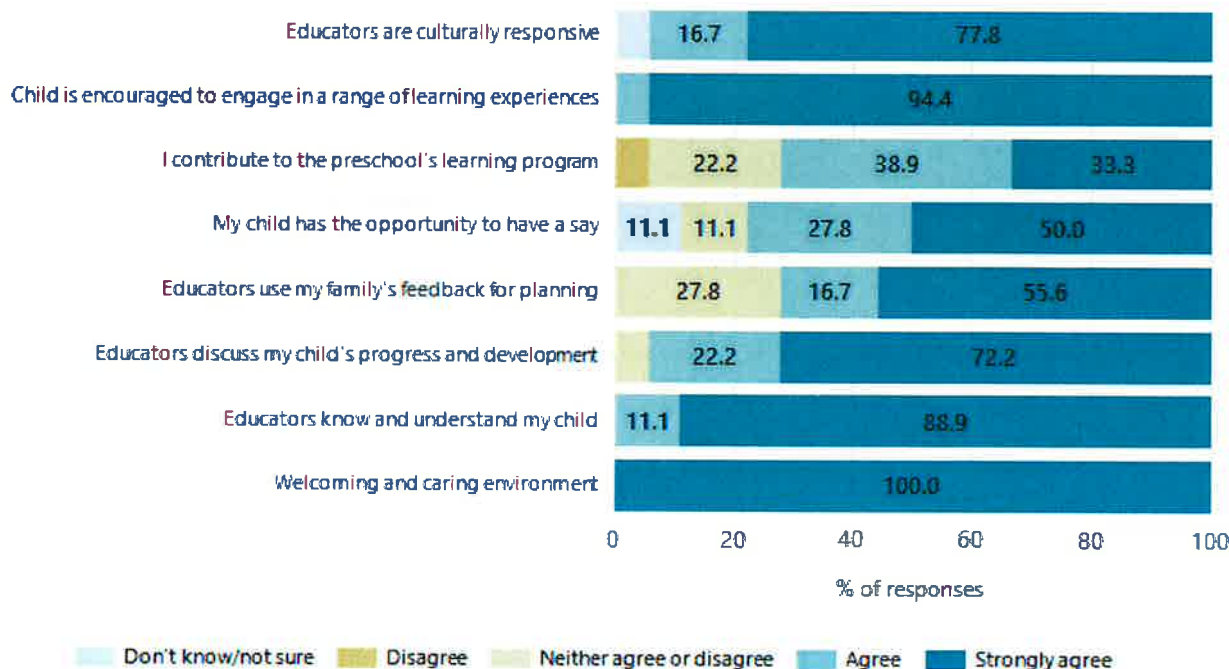
# Preschool Family Opinion Survey

## Governance, Leadership and Management



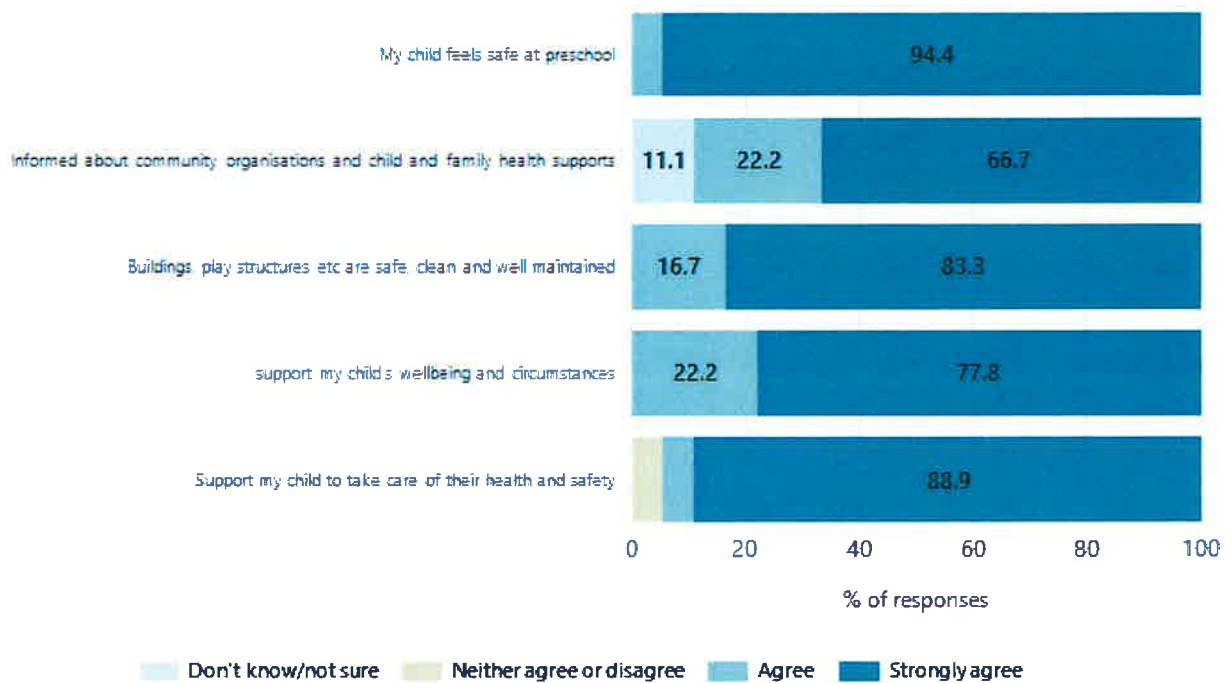
Data Source: 2024 Department for Education Preschool Family Opinions Survey, Term 3 2024.

## Quality of Teaching and Learning



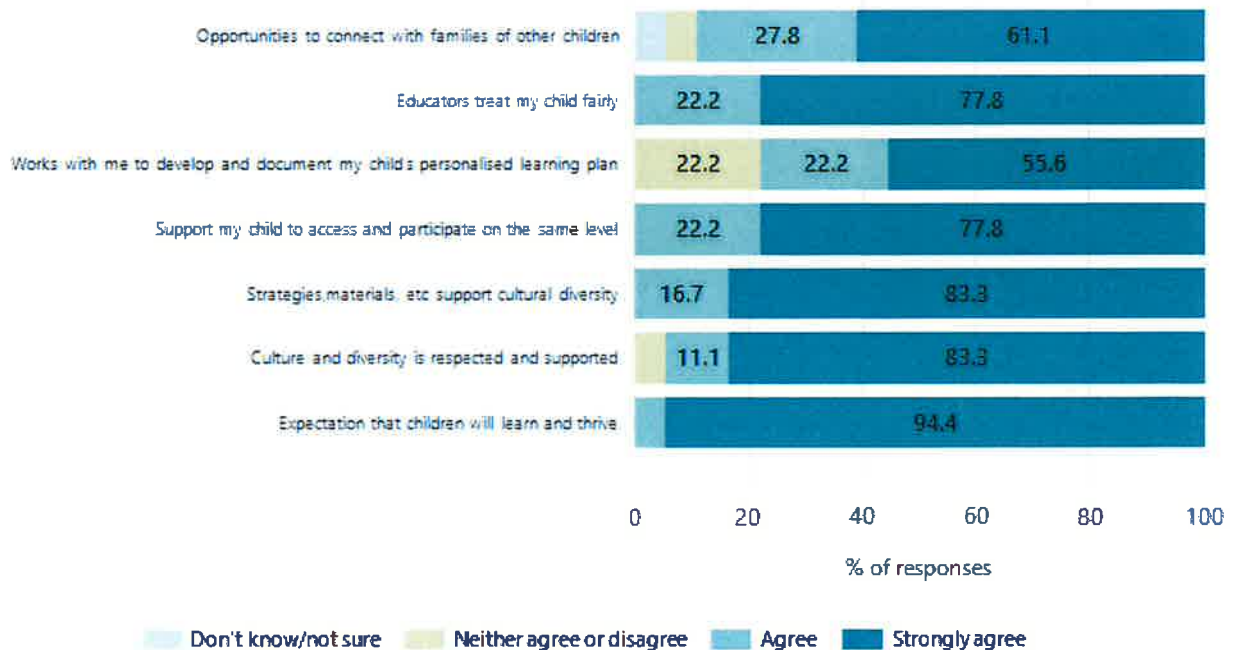
Data Source: 2024 Department for Education Preschool Family Opinions Survey, Term 3 2024.

## Safety, Health and Wellbeing



Data Source: 2024 Department for Education Preschool Family Opinions Survey, Term 3 2024.

## Support and Inclusion



Data Source: 2024 Department for Education Preschool Family Opinions Survey, Term 3 2024.

## Destination Schools

Feeder Schools (Site number - Name)	2022	2023	2024
0179 - North Adelaide Primary School	18.8%	17.2%	18.6%
0305 - Nailsworth Primary School	12.5%		3.4%
0368 - Prospect Primary School		7.8%	
0457 - Walkerville Primary School	25.0%	26.6%	28.8%
0570 - Prospect North Primary School		3.1%	
1036 - East Adelaide School			3.4%
8003 - Heritage College Inc			3.4%
8072 - St Peter's College	4.2%		
9031 - St Martin's Catholic Primary School			3.4%
9065 - Rosary School	12.5%	7.8%	8.5%
9999 - Unknown	4.2%	31.3%	22.0%

Note: The data is collected in term 3. It does not reflect actual schools enrolled in by existing preschool children. A blank cell indicates there was no data for students enrolled.

Data Source: Department for Education Destination Data Report, 2024.

## Highest Qualifications held by the teaching workforce and workforce composition

All teachers at this school are qualified and registered with the SA Teachers Registration Board.

Qualification Level	Number of Qualifications
Bachelor's degrees or Diplomas	3
Postgraduate Qualifications	1

Data Source: Data extracted from Mandatory Workforce Information Collections as on the last pay date of June 2024. As self-reported by staff in the system.

Please note: Data includes staff who are Actively employed and on extended paid leave. Please note only the highest qualification of the Teaching staff is reported. Excludes any number of other certifications earned.

### Workforce composition including indigenous staff

	Teaching Staff		Non-Teaching Staff	
	Indigenous	Non-Indigenous	Indigenous	Non-Indigenous
Full-Time Equivalents	0.0	3.4	0.0	1.5
Persons	0.0	4.0	0.0	3.0

Data Source: Data extracted from Mandatory Workforce Information Collection as on the last pay date of June 2024.

Please note: Data includes staff who are actively employed and on extended paid leave. "Indigenous category" is self-reported by staff in the system.

## Financial Statement

Funding Source	Amount
Grants: State	\$483,000
Grants: Commonwealth	
Parent Contributions	\$36,077
Fund Raising	\$4665
Other	

Data Source: School supplied data.

