

2024 annual report to the Community

Le Fevre Kindergarten Inc

Le Fevre Kindergarten Inc number: 5629

Partnership:
Le Fevre
Peninsula



Preschool director:

Gennie Cowling

Signature

Date of endorsement:

31/01/2025



Context Statement

Information about Le Fevre Kindergarten Inc is available on the centres website, as well as the Australian Children’s Education and Care Quality Authority (ACECQA) website.

Governing Council Report (operations/achievements / highlights)

2024 proved to be a fun filled and engaging year of learning for students at Le Fevre Kindergarten. Children engaged eagerly in play from day 1, exploring all the wonderful areas that the kindy has to offer.

This year children have built connections with the community attending 2 excursions. Children were delighted with visual storytelling at Superluminal and learnt about the world most resilient critter in Moss Piglet. The excitement for both extended to the bus ride too! Students also connected with community through incursions from Bugs ‘n’ Slugs, Radicool Reptiles, the RAA and the SA Police – It’s been a busy year!

Staff were able to access a grant obtained in 2023 and have further developed the gardens, which already offered students many hands-on learning experiences including preparing and cooking as well caring for the ecosystem.

In the coming year LFK will continue looking into plans to develop a sensory space to support students with regulation and provide a withdrawal space.

Kelly Jones – 2024 Chairperson

Preschool Attendance

	Term 1	Term 2	Term 3	Term 4
2021 centre	91.8%	86.4%	88.2%	87.9%
2022 centre	83%	80.3%	85.3%	86.2%
2023 centre	87.7%	87.2%	79.9%	88%
2024 centre	89.4%		77.4%	

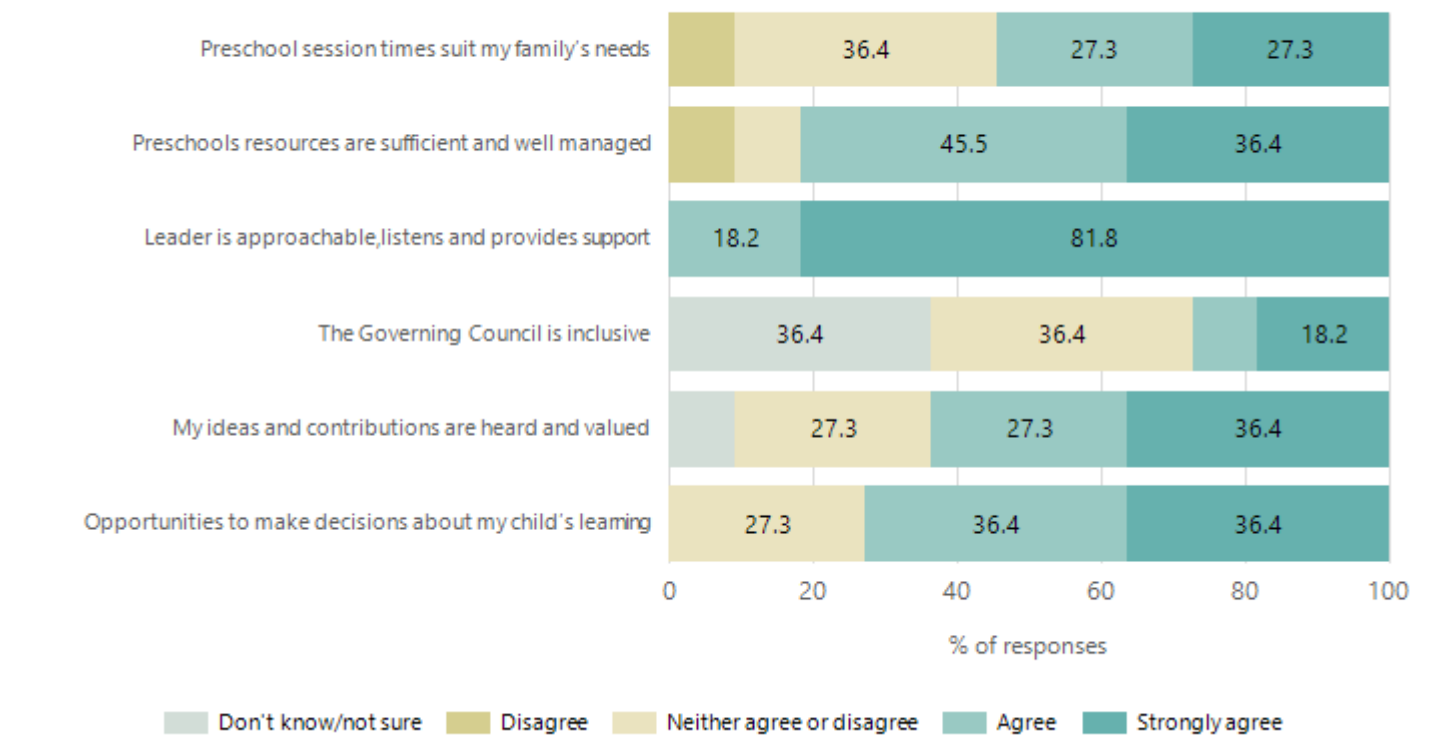
Based on attendances recorded in the two-week reference period each term. Data for eligible enrolments as described in the department's Enrolment policy. Attendance rates may differ to previous reporting with the transfer from calculations based on deemed attendance to actual attendance using booked hours divided by attended hours. Data Source: Department for Education Attendance Data, Semester 1 Report 2024. A blank cell indicates there we no students enrolled.

Attendance Comment

In South Australia, preschool attendance is not compulsory, but it is strongly encouraged. Preschool gives children the best opportunity to develop skills, which prepare them for school. These benefits include establishing positive routines and habits, friendships and connections as well as developing communication, problem-solving and creative skills. All children are entitled to access a preschool program over 4 terms the year before they start school.

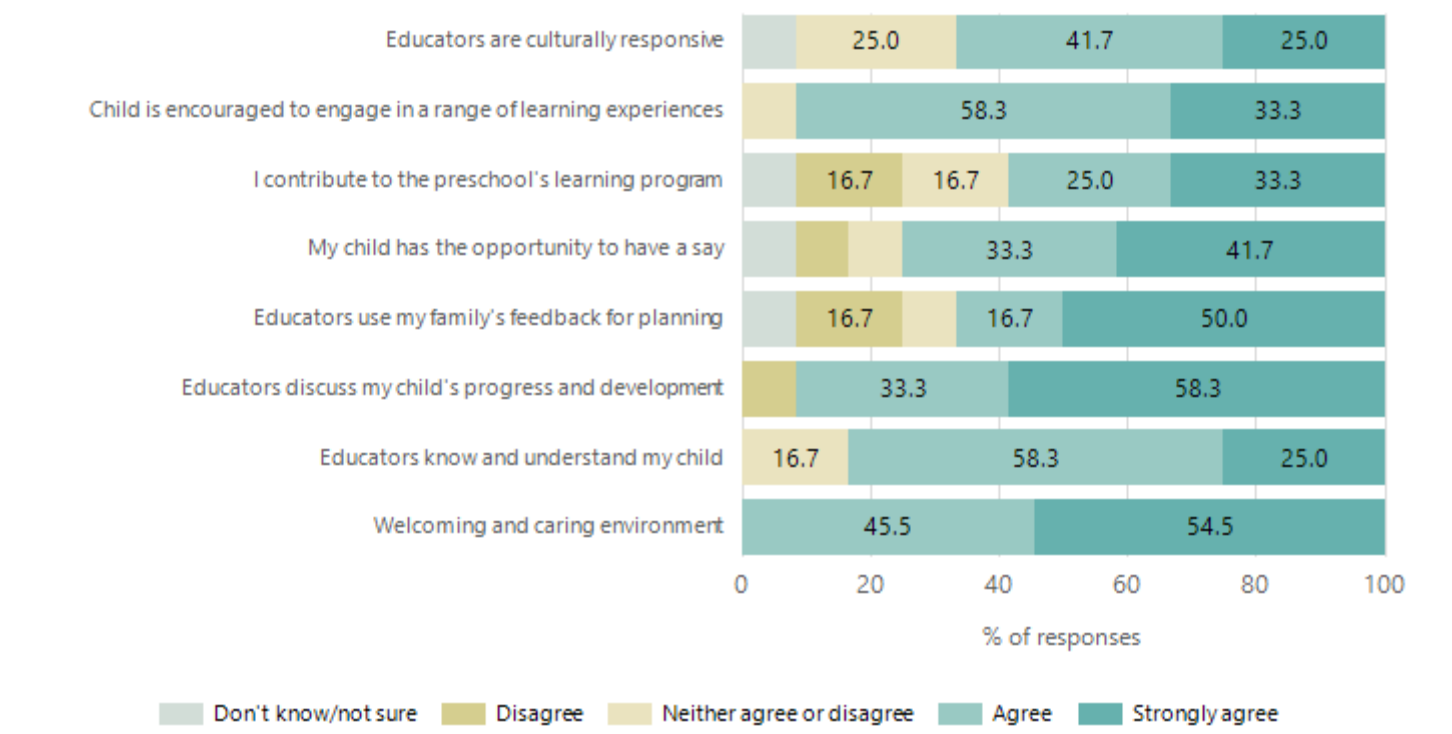
Preschool Family Opinion Survey

Governance, Leadership and Management



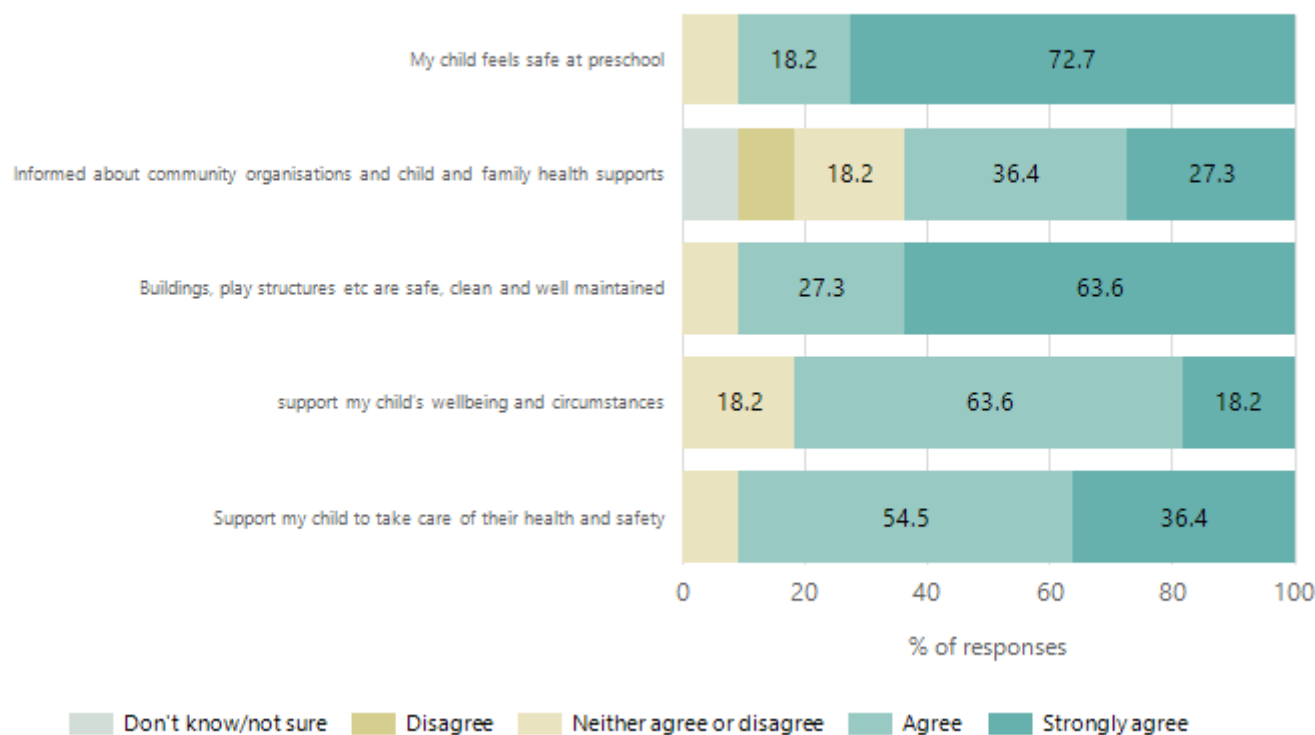
Data Source: 2024 Department for Education Preschool Family Opinions Survey, Term 3 2024.

Quality of Teaching and Learning



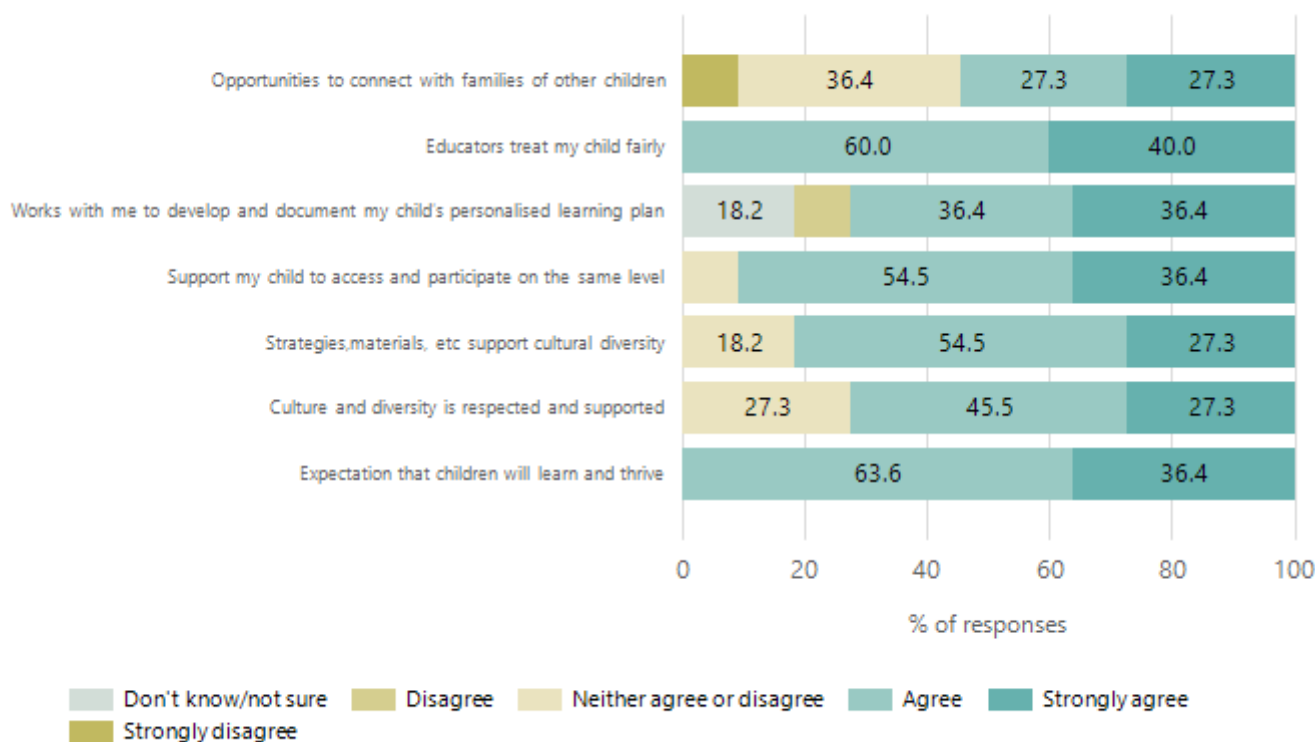
Data Source: 2024 Department for Education Preschool Family Opinions Survey, Term 3 2024.

Safety, Health and Wellbeing



Data Source: 2024 Department for Education Preschool Family Opinions Survey, Term 3 2024.

Support and Inclusion



Data Source: 2024 Department for Education Preschool Family Opinions Survey, Term 3 2024.

Destination Schools

Feeder Schools (Site number - Name)	2022	2023	2024
0219 - Largs Bay School	7.5%	19.6%	16.9%
0221 - Le Fevre Peninsula Primary School	52.5%	42.9%	38.0%
1203 - Westport Primary School			4.2%
8222 - Dominican School	7.5%	5.4%	9.9%
9999 - Unknown	30.0%	25.0%	25.4%

Note: The data is collected in term 3. It does not reflect actual schools enrolled in by existing preschool children. A blank cell indicates there was no data for students enrolled.

Data Source: Department for Education Destination Data Report, 2024.

Highest Qualifications held by the teaching workforce and workforce composition

All teachers at this school are qualified and registered with the SA Teachers Registration Board.

Qualification Level	Number of Qualifications
Bachelor's degrees or Diplomas	2
Postgraduate Qualifications	2

Data Source: Data extracted from Mandatory Workforce Information Collections as on the last pay date of June 2024. As self-reported by staff in the system.

Please note: Data includes staff who are Actively employed and on extended paid leave. Please note only the highest qualification of the Teaching staff is reported. Excludes any number of other certifications earned.

Workforce composition including indigenous staff

	Teaching Staff		Non-Teaching Staff	
	Indigenous	Non-Indigenous	Indigenous	Non-Indigenous
Full-Time Equivalents	0.0	2.5	0.0	0.6
Persons	0.0	4.0	0.0	1.0

Data Source: Data extracted from Mandatory Workforce Information Collection as on the last pay date of June 2024.

Please note: Data includes staff who are actively employed and on extended paid leave. "Indigenous category" is self-reported by staff in the system.

Financial Statement

Funding Source	Amount
Grants: State	0
Grants: Commonwealth	\$582,060.08
Parent Contributions	\$24,339
Fund Raising	0
Other	0

Data Source: School supplied data.