

2024 annual report to the Community

# Elizabeth O'Grady Kindergarten

Elizabeth O'Grady Kindergarten number: 5613

Partnership: Western Adelaide Shores



Preschool director:

*Jennifer Melta*

Signature

Date of endorsement:

05/02/2025



Government  
of South Australia  
Department for Education

# Context Statement

Information about Elizabeth O'Grady Kindergarten is available on the centres website, as well as the Australian Children's Education and Care Quality Authority (ACECQA) website.

Elizabeth O'Grady Kindergarten has a well-established tradition of providing a caring, safe environment in which the children experience and enjoy learning within a play-based curriculum. Educators deliver quality learning opportunities to support the development of children's knowledge life skills and attitudes. We develop collaborative relationships with families and our community which are demonstrative of our core values of cooperation and respect for diversity. Elizabeth O'Grady Kindergarten is a full-time stand-alone kindergarten located in Grange which offers 30 hours of preschool across a two-week timetable. Children attend two full days per week (8.45 - 3.30), Turtle Group: Monday and Tuesday and Dolphin Group: Wednesday and Thursday, with one half day on alternate Fridays (8.45 - 11.45). We have the capacity for 77 children. Our educators include a director and two teachers, two early childhood educators, a preschool support educator and a finance officer. We have a well-attended, self-funded playgroup on Friday afternoons, for children who will attend the kindergarten in the following year. Our kindergarten is a member of the Flinders Park 3 Portfolio which comprises 32 sites (high schools, primary schools, and kindergartens) in the area from West Lakes Shore to Seacliff. When our children complete their kindergarten year they go on to several local primary schools. Our yearly improvement goals are based on a rigorous evaluation process by all educators. We reflect on children's learning progression over the year and, use the Self-Assessment process to articulate our work against the National Quality Standards

## Governing Council Report

The 2024 Governing Council was meeting during the morning of the Tuesday preschool session proved difficult to maintain continue attendance by members. During the year we had a change of leadership and a GC member was a part of the selection panel for the preschool director's position that was successfully filled from July 2024 for a five-and-a-half-year tenure. Recruitment of new governing council members has been successful with seven parents nominating to form a governing council for 2025.

Facility improvements have continued with the completion of the new boundary fencing and replacement of the external window frames that contained asbestos.

Fundraising using tea towel art proved to be a popular choice for the end of the year.

# Preschool Attendance

	Term 1	Term 2	Term 3	Term 4
2021 centre	90.8%	87.7%	93.8%	89.8%
2022 centre	91.2%	88.8%	92.6%	81.1%
2023 centre	90.6%	87%	86.2%	81.8%
2024 centre	89.3%		82.7%	

Based on attendances recorded in the two-week reference period each term. Data for eligible enrolments as described in the department's Enrolment policy. Attendance rates may differ to previous reporting with the transfer from calculations based on deemed attendance to actual attendance using booked hours divided by attended hours. Data Source: Department for Education Attendance Data, Semester 1 Report 2024. A blank cell indicates there we no students enrolled.

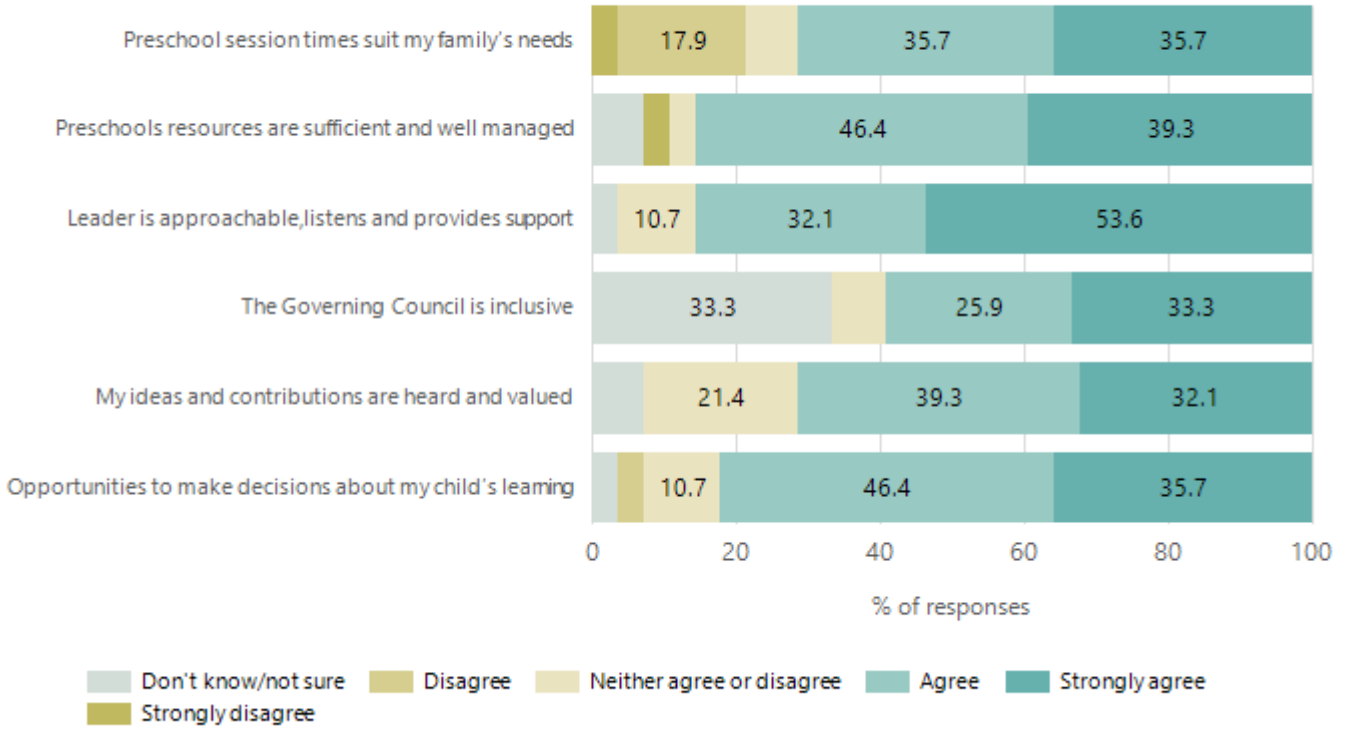
## Attendance Comment

In South Australia, preschool attendance is not compulsory, but it is strongly encouraged. Preschool gives children the best opportunity to develop skills, which prepare them for school. These benefits include establishing positive routines and habits, friendships and connections as well as developing communication, problem-solving and creative skills. All children are entitled to access a preschool program over 4 terms the year before they start school.

At EOGK we have noticed a trend with families post COVID to resume travelling interstate and overseas for family holidays during school terms. Our family cohort is also very supportive of maintaining a healthy environment at the kindergarten keeping children away from kindergarten if they are unwell or are unable to manage their cold symptoms

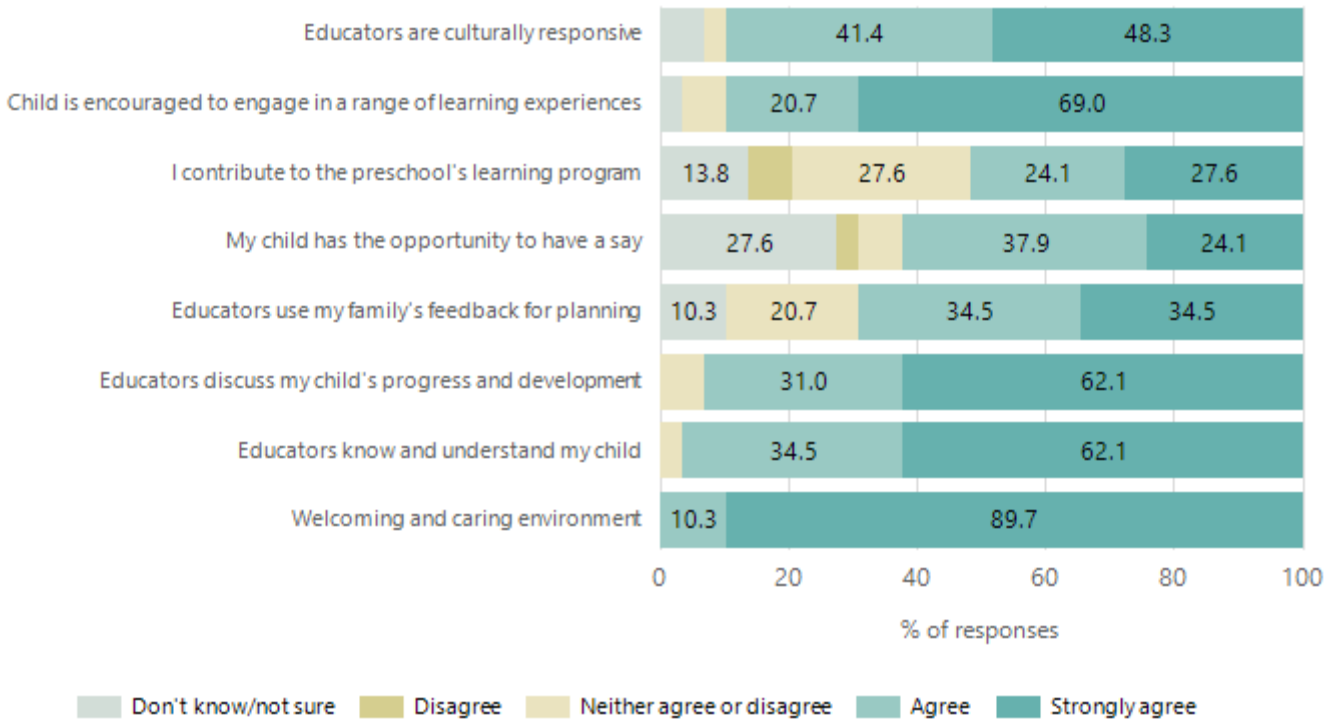
# Preschool Family Opinion Survey

## Governance, Leadership and Management



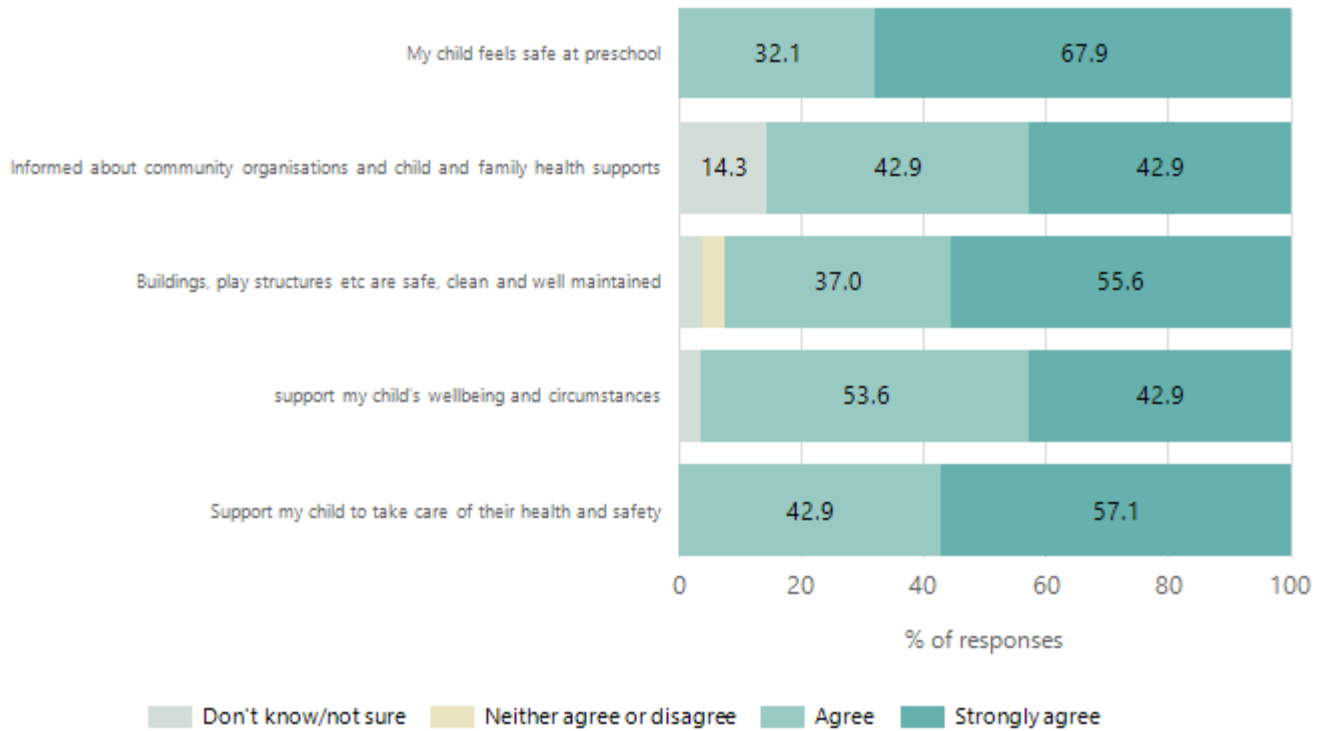
Data Source: 2024 Department for Education Preschool Family Opinions Survey, Term 3 2024.

## Quality of Teaching and Learning



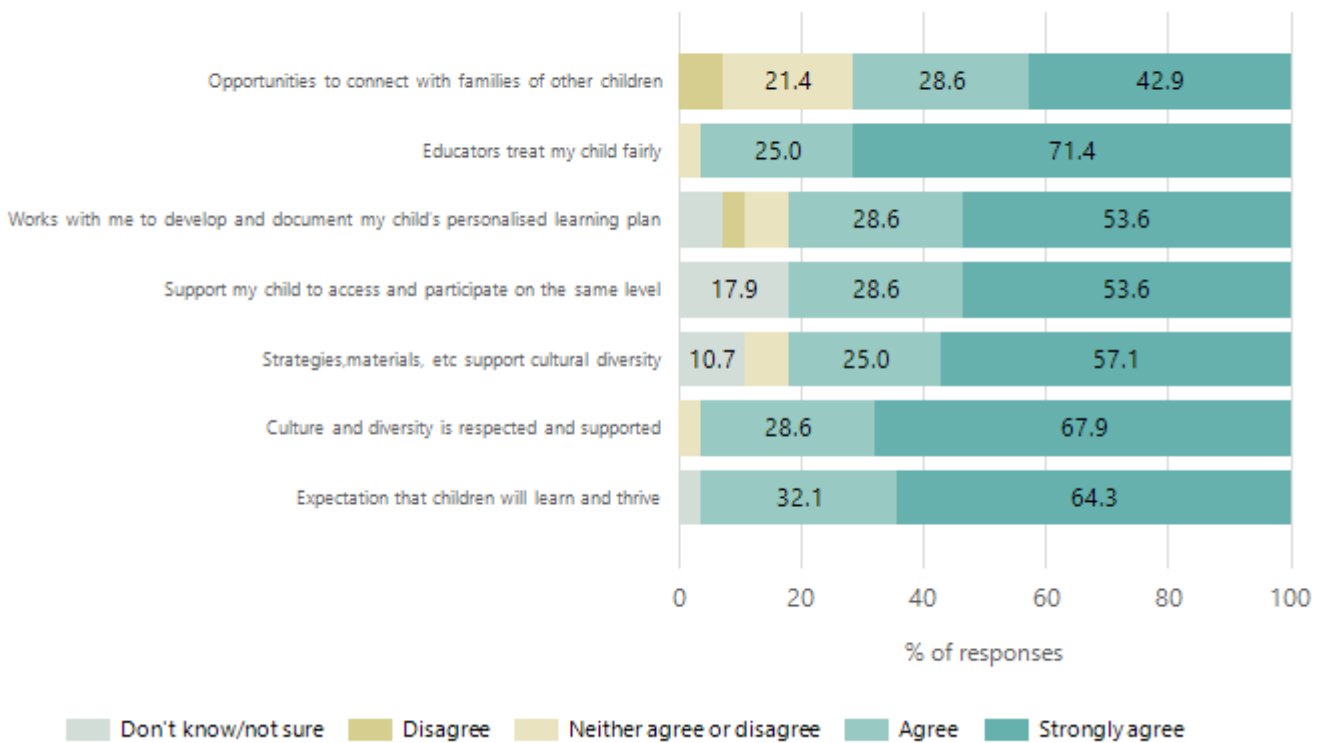
Data Source: 2024 Department for Education Preschool Family Opinions Survey, Term 3 2024.

## Safety, Health and Wellbeing



Data Source: 2024 Department for Education Preschool Family Opinions Survey, Term 3 2024.

## Support and Inclusion



Data Source: 2024 Department for Education Preschool Family Opinions Survey, Term 3 2024.

## Destination Schools

Feeder Schools (Site number - Name)	2022	2023	2024
0934 - Fulham Gardens Primary School	3.0%		3.0%
1166 - Fulham North Primary School	7.6%	4.2%	7.1%
8370 - Star of the Sea School	15.2%	8.5%	21.2%
9040 - St Francis School	3.0%		4.0%
1022 -Grange Primary School	66.7%	84.5%	64.7%

Note: The data is collected in term 3. It does not reflect actual schools enrolled in by existing preschool children. A blank cell indicates there was no data for students enrolled.

Data Source: Department for Education Destination Data Report, 2024.

# Highest Qualifications held by the teaching workforce and workforce composition

All teachers at this school are qualified and registered with the SA Teachers Registration Board.

Qualification Level	Number of Qualifications
Bachelor's degrees or Diplomas	7
Postgraduate Qualifications	1

Data Source: Data extracted from Mandatory Workforce Information Collections as on the last pay date of June 2024. As self-reported by staff in the system.

Please note: Data includes staff who are Actively employed and on extended paid leave. Please note only the highest qualification of the Teaching staff is reported. Excludes any number of other certifications earned.

## Workforce composition including indigenous staff

	Teaching Staff		Non-Teaching Staff	
	Indigenous	Non-Indigenous	Indigenous	Non-Indigenous
Full-Time Equivalents	0.0	2.0	0.0	2.0
Persons	0.0	4.0	0.0	3.0

Data Source: Data extracted from Mandatory Workforce Information Collection as on the last pay date of June 2024.

Please note: Data includes staff who are actively employed and on extended paid leave. "Indigenous category" is self-reported by staff in the system.

## Financial Statement

Funding Source	Amount
Grants: State	589,572
Grants: Commonwealth	N/A
Parent Contributions	58,580
Fund Raising	1,018
Other	2,384

Data Source: School supplied data.