



2024 Annual Report to the Community

Mitcham Preschool Centre

Mitcham Preschool Centre number: 4682

Partnership: Mitcham Plains



Preschool director:

Susan Sandow

Susan Sandow

Date of endorsement:

22/02/2025



Government
of South Australia
Department for Education

Context Statement

Information about Mitcham Preschool Centre is available on the centre's website, as well as the Australian Children's Education and Care Quality Authority (ACECQA) website.

Governing Council Report

Mitcham Preschool Centre, Governing Council 2024, Final Report

Prepared by Governing Council Chair, Tiffany Anders, 18 Feb 2025.

In 2024, the governing Council undertook and/or assisted Susan Sandow and the MPC staff across several items.

1. Reviewing and providing feedback on various policies for MPC, including the Healthy Food, Sun safety and Water safety.
2. The Treasurer performed periodic reviews of the expenditure and income of MPC.
3. Treasurer and Chair signed the information for the new finance company (EMS)
4. Approved financial delegations for 2024 and discussed and approved/countersigned changes to financial delegation arising from the appointment of Susan Sandow.
5. Discussed and provided feedback regarding discussed matters of curriculum, quality improvement plans, reconciliation action plan, occupational health and safety, building/ playground improvements/repairs, changes relating to the new mid-year intake requirements, selected pupil free days, excursions and after ad hoc matters.
6. Discussed several ways to better market MPC to increase student numbers in future years.
7. Fundraising ideas were brainstormed, and the highly successful art exhibition was supported by a gold coin donation, raising nearly \$500
8. The ‘Nature market’ was supported by governing council members and parent volunteers. This market showcased handcrafted gifts as part of the sustainability curriculum in Term 4. These items, along with donated gifts, were sold to parents as part of a Christmas market. Students and MPC staff ran the highly successful market, and it was a significant fundraiser.
9. Thank you/ farewell gifts for the MPC staff were organised in Term 4.

The 2024 Governing Council enjoyed engaging participation from parents of children in both groups. Discussions were animated, broad reaching, informative and allowed parents to express differing views. The Governing Council functioned well to support the experienced staff of MPC, and Governing Council members gained a greater appreciation of the efforts and expertise of the MPC staff through this process.

Preschool Attendance

	Term 1	Term 2	Term 3	Term 4
2021 centre	93.9%	94.7%	83.6%	92.2%
2022 centre	93.1%	86.6%	82%	88.5%
2023 centre	94.6%	89.6%	88.3%	90.9%
2024 centre	85.5%		87.3%	

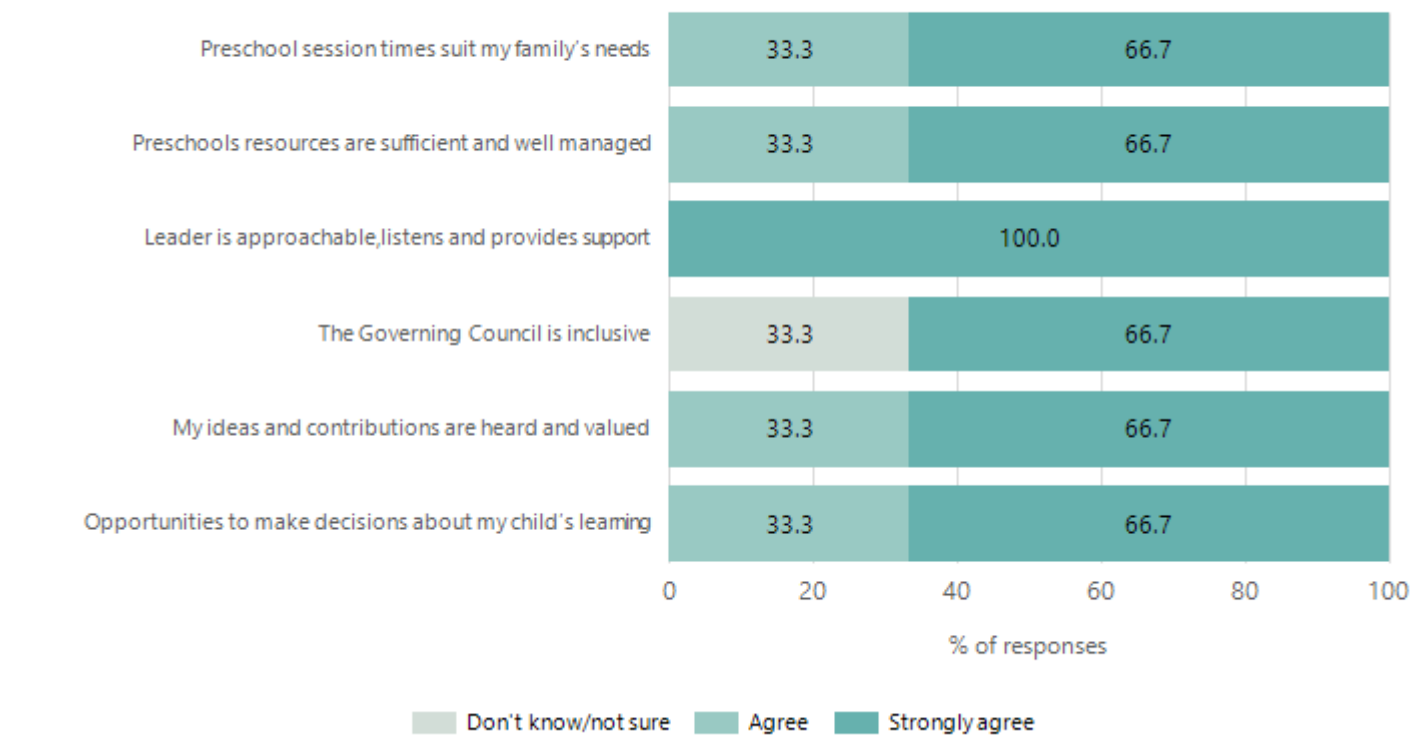
Based on attendances recorded in the two-week reference period each term. Data for eligible enrolments as described in the department's Enrolment policy. Attendance rates may differ to previous reporting with the transfer from calculations based on deemed attendance to actual attendance using booked hours divided by attended hours. Data Source: Department for Education Attendance Data, Semester 1 Report 2024. A blank cell indicates there we no students enrolled.

Attendance Comment

In South Australia, preschool attendance is not compulsory, but it is strongly encouraged. Preschool gives children the best opportunity to develop skills, which prepare them for school. These benefits include establishing positive routines and habits, friendships and connections as well as developing communication, problem-solving and creative skills. All children are entitled to access a preschool program over 4 terms the year before they start school.

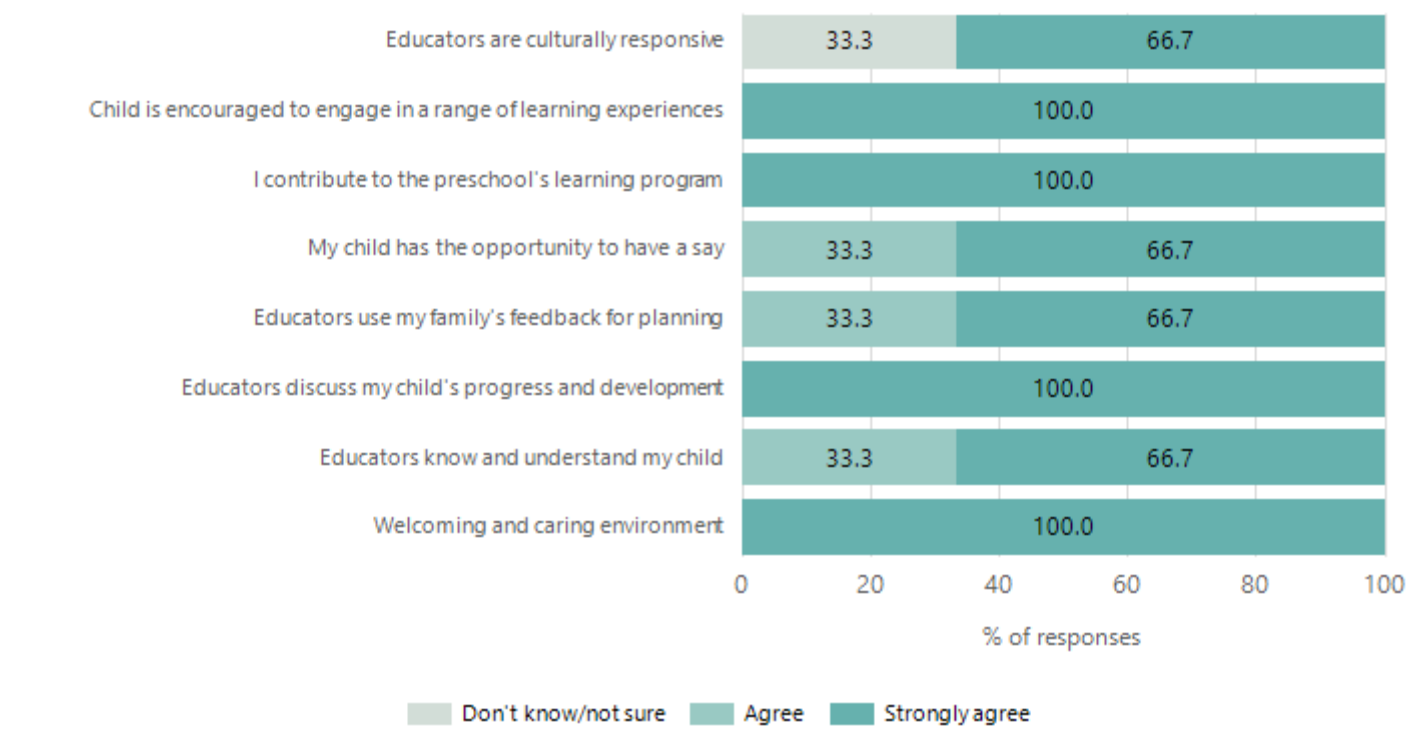
Preschool Family Opinion Survey

Governance, Leadership and Management



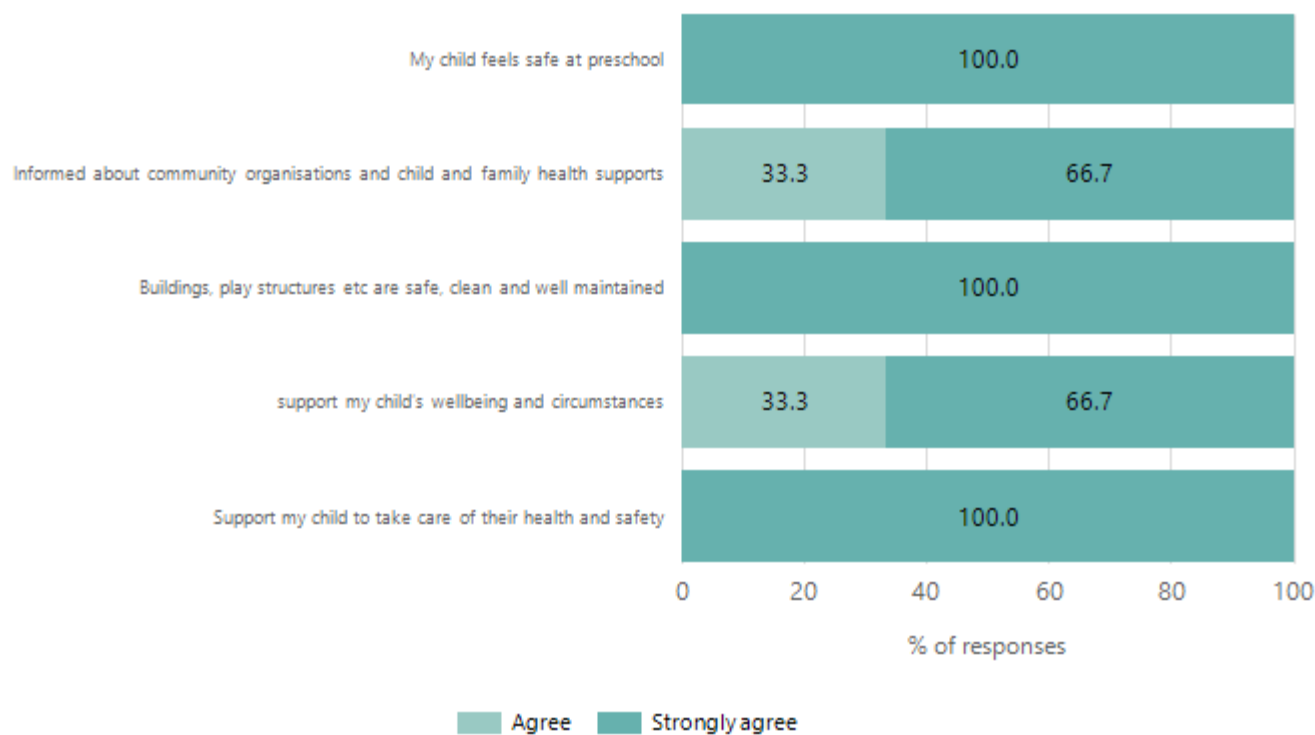
Data Source: 2024 Department for Education Preschool Family Opinions Survey, Term 3 2024.

Quality of Teaching and Learning



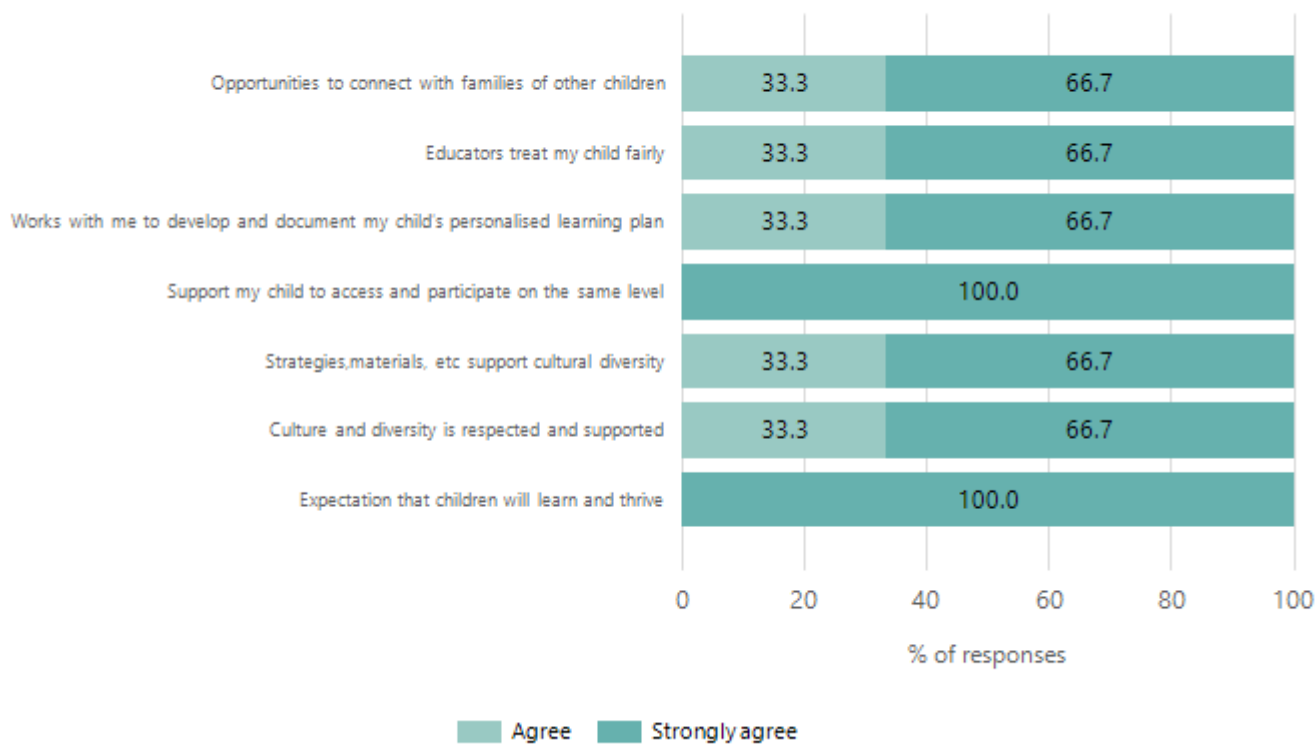
Data Source: 2024 Department for Education Preschool Family Opinions Survey, Term 3 2024.

Safety, Health and Wellbeing



Data Source: 2024 Department for Education Preschool Family Opinions Survey, Term 3 2024.

Support and Inclusion



Data Source: 2024 Department for Education Preschool Family Opinions Survey, Term 3 2024.

Destination Schools

Feeder Schools (Site number - Name)	2022	2023	2024
0270 - Mitcham Primary School	35.1%	35.3%	28.4%
0475 - Westbourne Park Primary School	24.7%	16.2%	16.4%
0723 - Colonel Light Gardens Primary School	20.8%	25.0%	10.5%
9037 - St Joseph's School - Kingswood	3.9%		9.0%
9999 - Unknown	9.1%	20.6%	28.4%

Note: The data is collected in term 3. It does not reflect actual schools enrolled in by existing preschool children. A blank cell indicates there was no data for students enrolled.

Data Source: Department for Education Destination Data Report, 2024.

Highest Qualifications held by the teaching workforce and workforce composition

All teachers at this school are qualified and registered with the SA Teachers Registration Board.

Qualification Level	Number of Qualifications
Bachelor's degrees or Diplomas	2
Postgraduate Qualifications	1

Data Source: Data extracted from Mandatory Workforce Information Collections as on the last pay date of June 2024. As self-reported by staff in the system.

Please note: Data includes staff who are Actively employed and on extended paid leave. Please note only the highest qualification of the Teaching staff is reported. Excludes any number of other certifications earned.

Workforce composition including indigenous staff

	Teaching Staff		Non-Teaching Staff	
	Indigenous	Non-Indigenous	Indigenous	Non-Indigenous
Full-Time Equivalents	0.0	2.5	0.0	1.5
Persons	0.0	3.0	0.0	2.0

Data Source: Data extracted from Mandatory Workforce Information Collection as on the last pay date of June 2024.

Please note: Data includes staff who are actively employed and on extended paid leave. "Indigenous category" is self-reported by staff in the system.

Financial Statement

Funding Source	Amount
Grants: State	
Grants: Commonwealth	
Parent Contributions	
Fund Raising	
Other	

Data Source: School supplied data.