



## 2024 annual report to the Community

# Woodside Preschool Playcentre

Partnership: Torrens Valley

Woodside Preschool Playcentre number: 4676



Preschool director:

Robyn Herringer

X   
Robyn Herringer  
Preschool Director

Signature

Date of endorsement

29/01/2025





# Context Statement

Information about Woodside Preschool Playcentre is available on the centres website, as well as the Australian Childrens Education and Care Quality Authority (ACECQA) website.

## 2025: A Year of Growth and Community Engagement at Woodside Preschool

In 2025, Woodside Preschool celebrated its first full year with two intakes and two transitions to school, marking a significant shift to a full-time model with extended session hours from 8:30 AM to 3:30 PM. To meet the 15-hour weekly requirement, both groups enjoyed several make-up days, ensuring a comprehensive learning experience.

Our community events were a highlight of the year. The Wheel-a-thon at the Gilman Bike Track saw enthusiastic participation from parents, grandparents, and friends, creating a vibrant community atmosphere. Mother's Night and Father's Night offered parents a valuable opportunity to engage deeply with their children on-site. Additionally, Grandparents Day was a heart-warming success, with grandparents and special friends joining us over two days, supported by current parents to ensure smooth operations.

Playgroup thrived with the presence of preschool staff on Fridays, collaborating with the Playgroup coordinator to uphold and implement essential policies and processes. Following the resignation of our coordinator in Term 4, the Governing Council funded an Educator Supported Playgroup, ensuring its continued success. As we move into 2025, our Playgroup remains a vital and fully integrated part of our preschool operations.

This year has been a testament to our commitment to fostering a strong, engaged community and providing enriching experiences for all involved. We look forward to building on this success in the coming year.

# Governing Council Report

Governing Council Report – Becc Tanner

2024 has been an exciting and memorable year for Woodside Preschool. We saw the successful transition of the first batch of mid-year intakes, who have since embarked on their next big step—starting their school year!

The children had a fantastic year filled with enriching experiences. They enjoyed a variety of excursions, including bush kindy, a visit to Lauren's Farm, the Gorge Wildlife Park, and trips to some of our kindy friends' homes and local cafes. Walking around our local town was another highlight. Special events like Father's and Mother's Nights, along with Grandparents' Day, were particularly treasured by the children and their families.

Our Governing Council has worked hard to support several fundraising efforts, which have been integral to enhancing the preschool environment. Fundraisers such as the Wheel-a-Thon, tea towels designed by the children, a wine drive, and the highly successful major raffle have all contributed to much-needed updates and improvements. Thanks to these efforts, we've been able to refresh some outdoor equipment, including new trucks for the sandpit, outdoor mats, and a new umbrella for added shade. Inside, we also replaced the lighting and purchased "mallow mats" for the quiet room, providing a calming space for children to relax.

Looking ahead, we have some exciting projects in the works. The bulk of our fundraising efforts are now focused on updating the outdoor climbing equipment, with a 'natural' construction design. We are currently in the process of gathering quotes for this project, which promises to be an exciting addition. Additionally, the planning of a pond screen is underway, and we continue to prioritize improvements, such as the side fence, in close collaboration with the Department.

Finally, I'd like to extend my heartfelt thanks to the preschool staff for their ongoing dedication to creating a welcoming, fun, and safe environment for all the children. Their hard work and passion for early childhood education are truly appreciated. I'd also like to express my gratitude to the families for their unwavering support, as well as the Governing Council for their continued efforts to make Woodside Preschool a wonderful place for children to start their learning journey.

Here's to a great 2025 ahead!

## Preschool Attendance

	Term 1	Term 2	Term 3	Term 4
2021 centre	87%	94.9%	86.8%	94.9%
2022 centre	92%	84.9%	83.8%	42.9%
2023 centre	90.3%	90.1%	84.9%	87.5%
2024 centre	90.2%		85.1%	

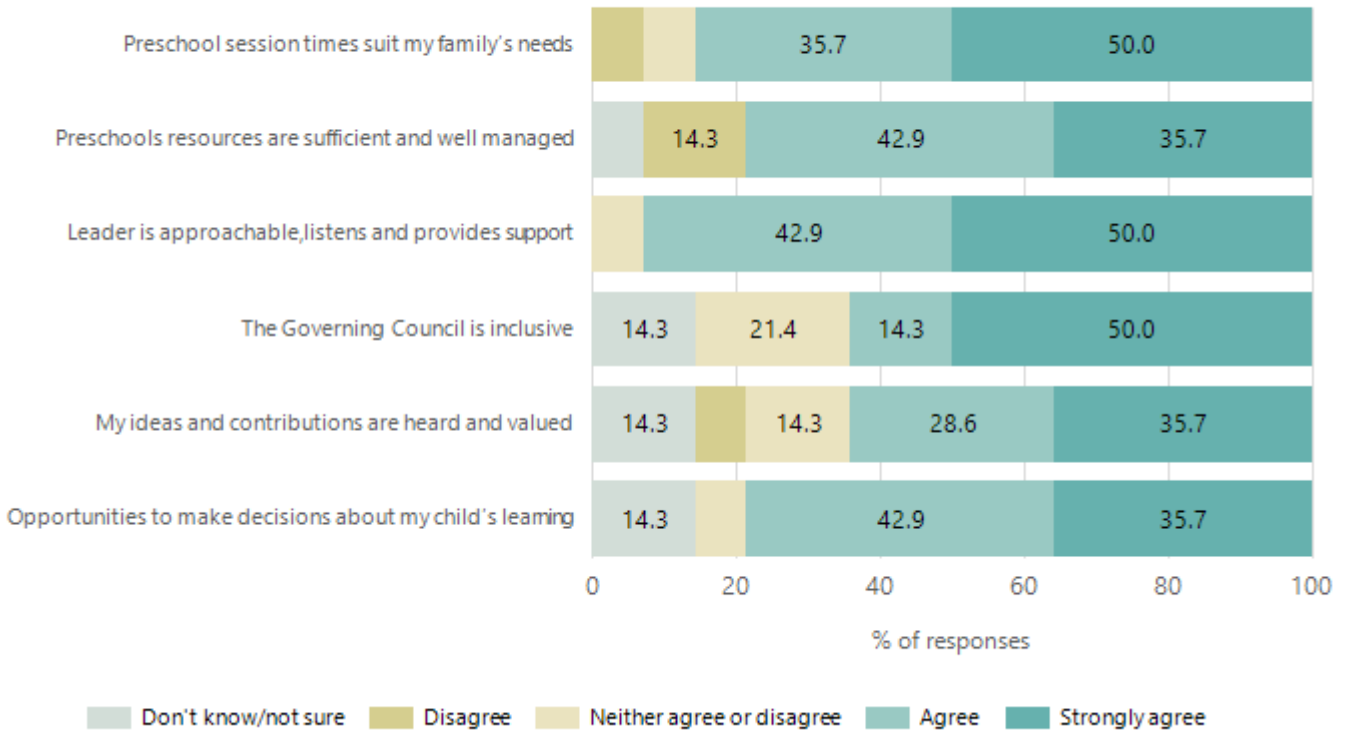
Based on attendances recorded in the two-week reference period each term. Data for eligible enrolments as described in the department's Enrolment policy. Attendance rates may differ to previous reporting with the transfer from calculations based on deemed attendance to actual attendance using booked hours divided by attended hours. Data Source: Department for Education Attendance Data, Semester 1 Report 2024. A blank cell indicates there were no students enrolled.

## Attendance Comment

In South Australia, preschool attendance is not compulsory, but it is strongly encouraged. Preschool gives children the best opportunity to develop skills, which prepare them for school. These benefits include establishing positive routines and habits, friendships and connections as well as developing communication, problem-solving and creative skills. All children are entitled to access a preschool program over 4 terms the year before they start school.

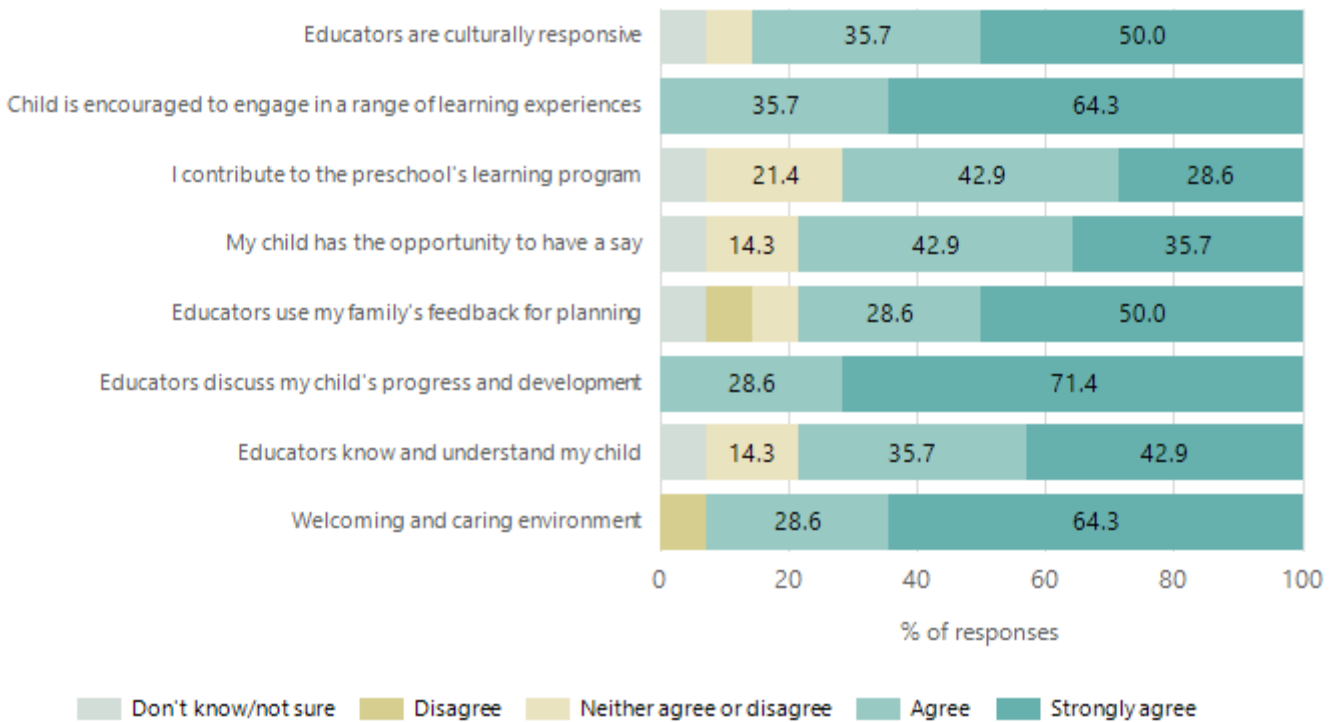
# Preschool Family Opinion Survey

## Governance, Leadership and Management



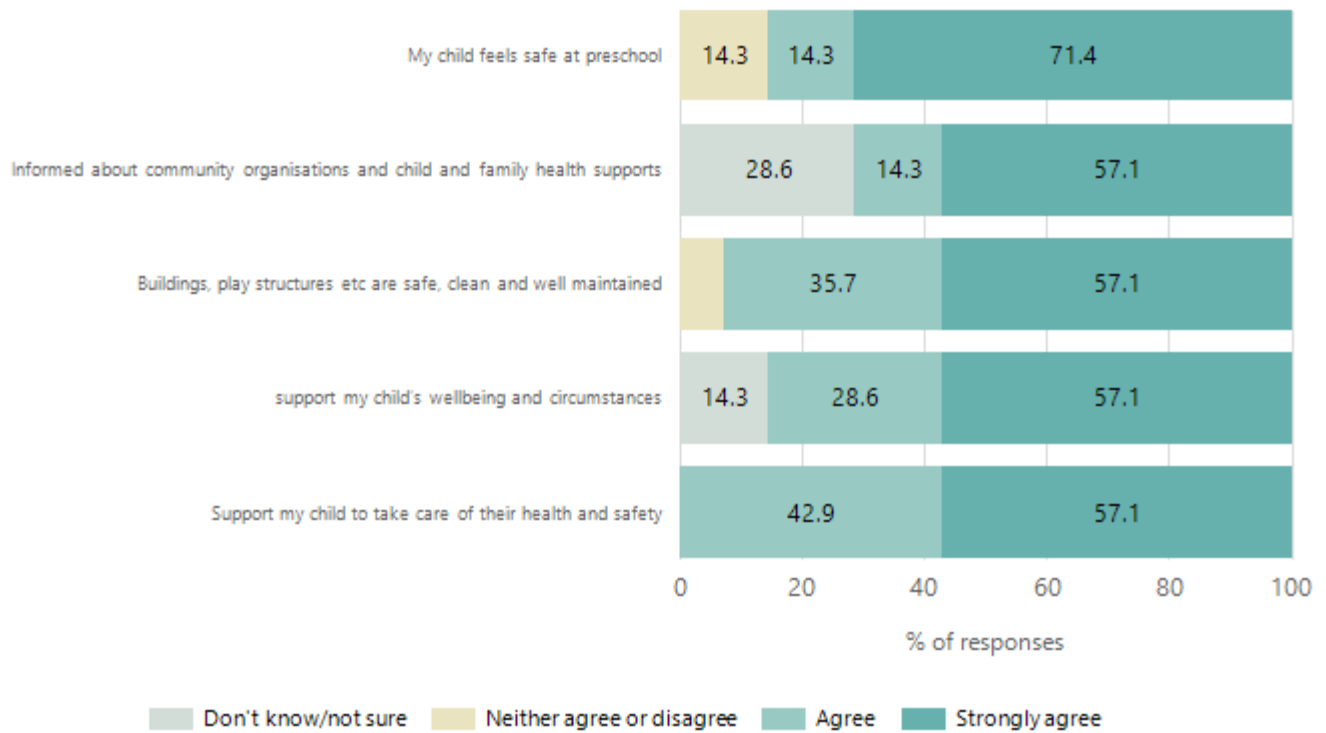
Data Source: 2024 Department for Education Preschool Family Opinions Survey, Term 3 2024.

## Quality of Teaching and Learning



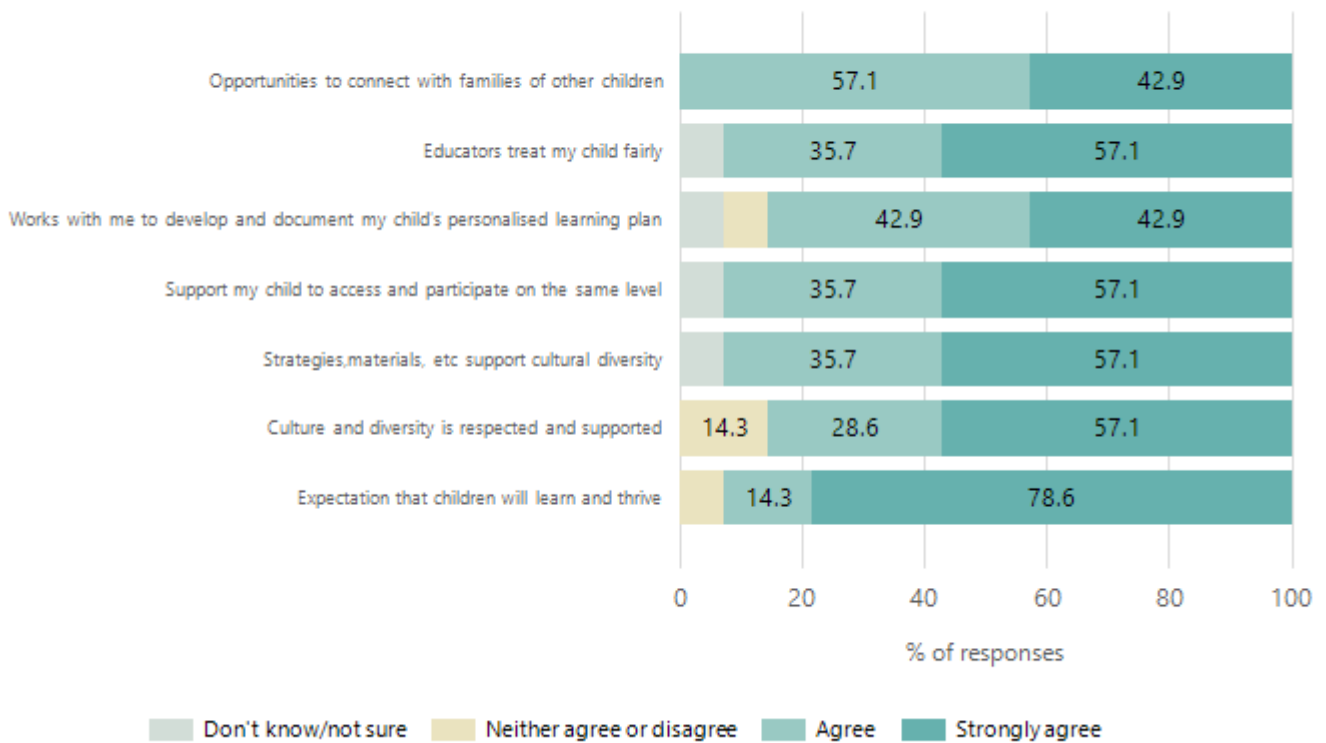
Data Source: 2024 Department for Education Preschool Family Opinions Survey, Term 3 2024.

## Safety, Health and Wellbeing



Data Source: 2024 Department for Education Preschool Family Opinions Survey, Term 3 2024.

## Support and Inclusion



Data Source: 2024 Department for Education Preschool Family Opinions Survey, Term 3 2024.

## Destination Schools

Feeder Schools (Site number - Name)	2022	2023	2024
0107 - Crafers Primary School			3.1%
0136 - Lenswood Primary School			3.1%
0495 - Woodside Primary School	92.7%	89.1%	80.0%
9999 - Unknown		7.3%	10.8%

Note: The data is collected in term 3. It does not reflect actual schools enrolled in by existing preschool children. A blank cell indicates there was no data for students enrolled.

Data Source: Department for Education Destination Data Report, 2024.

# Highest Qualifications held by the teaching workforce and workforce composition

All teachers at this school are qualified and registered with the SA Teachers Registration Board.

Qualification Level	Number of Qualifications
Bachelor's degrees or Diplomas	4

Data Source: Data extracted from Mandatory Workforce Information Collections as on the last pay date of June 2024. As self-reported by staff in the system.

Please note: Data includes staff who are Actively employed and on extended paid leave. Please note only the highest qualification of the Teaching staff is reported. Excludes any number of other certifications earned.

## Workforce composition including indigenous staff

	Teaching Staff		Non-Teaching Staff	
	Indigenous	Non-Indigenous	Indigenous	Non-Indigenous
Full-Time Equivalents	0.0	2.7	0.0	2.0
Persons	0.0	4.0	0.0	3.0

Data Source: Data extracted from Mandatory Workforce Information Collection as on the last pay date of June 2024.

Please note: Data includes staff who are actively employed and on extended paid leave. "Indigenous category" is self-reported by staff in the system.

## Financial Statement

Funding Source	Amount
Grants: State	525157.00
Grants: Commonwealth	0
Parent Contributions	42873.00
Fund Raising	14112.00
Other	75638.00

Data Source: School supplied data.