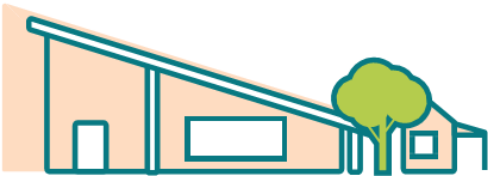




Lobethal

COMMUNITY KINDERGARTEN



2024 annual report to the Community

Lobethal Community Kindergarten

Lobethal Community Kindergarten number: 4630

Partnership: Torrens Valley



Preschool director:

Amanda Josephs

Signature

Date of endorsement:

14/02/2025



Government
of South Australia
Department for Education

Context Statement

Lobethal Community Kindergarten is located in the township of Lobethal in the Adelaide Hills approximately 33kms from the Adelaide GPO. Lobethal's township is centred around many smaller surrounding townships such as Lenswood, Mt Torrens, Cudlee Creek and Charleston.

The Lobethal township has two schools, Lobethal Primary School and Lobethal Lutheran School. Lobethal Primary School operates an OSHC service which our children access via the use of the Lobethal Lutheran school bus service, which collects and drops off our children from the service, meaning that our families can access care outside of kindy hours. Our community does not have any other care options available within our township.

Our kindergarten enrolments largely come from our catchment area and from our surrounding towns.

Our centre capacity is 30 children per session. We operate our kindergarten across two groups, one being a Monday and Tuesday group (Echidnas) and the other being Wednesday and Thursday (Geckos). We run long days, commencing sessions at 8.15am and finishing at 3.45pm.

Our current enrolment numbers sit in the high 40's. This fluctuates from year to year with a trend emerging, showing a drop in enrolments every three years to around 30 enrolments and increasing to mid 50's in other years. This effects our staffing and operational capacity

Our kindergarten is unique in that we run our program across two sites in term 2 of each year. We hold sessions in alternate locations each week, with one week being at our local bushland reserve, Bushland Park, and the other week at our Kindergarten site. Parents and caregivers drop off and pick up from the park. Whilst at Bushland park, we run our 'Nature-Connect' bush kindy program.

Lobethal Community Kindergarten has twice been awarded the Excellent rating from ACECQA, in 2018 and again in 2021. While we are currently rated 'Meeting' from ACECQA, we continue to implement a program that promotes advocacy of children's rights; nature pedagogy and development of children's agency; and strong, reciprocal community connections, that underpins an Excellence rating.

The impact of the 2019 Cudlee Creek bushfires and the isolation caused by Covid, and the impact of the ongoing trauma on our community in the following years, has influenced our program delivery and the many measures in place to help provide support our families and children. Research tells us that trauma is ongoing, many years after a traumatic event, therefore educators continue to respond and support the needs of our families and community in an ongoing manner.

In 2025, our program will move to a part-time program with our operating days being Wednesday and Thursday, and playgroup Fridays. We will be limited to 33 children in these sessions.

Governing Council Report

Lobethal Kindergarten Governing Council Year in Review 2024

At the beginning of 2024, Kait Pfeiffer and Christine Bennett took on the roles of chairpersons for the Lobethal Kindergarten Governing Council. They were joined by an amazing team, including Nicole Wingrove, Tanya Schild, Kate Harvey, Chantelle Wilson, and Kimberly Cepon, who were all integral in supporting the kindergarten throughout the year.

Fundraising

We kicked off the year by organizing an Easter raffle, where families donated a bunch of Easter-themed items. These were put together into 25 raffle prizes, and the fundraiser raised *** [insert amount raised].

In another big event, Nicole Wingrove and Tanya Schild worked with Daniel from the Lobethal Town Hall to arrange a Family Movie Day on Sunday, June 2nd. The whole community was invited to come along and enjoy *Alvin and the Chipmunks: Chipwrecked* at 1 pm, with fun extras like games, glitter tattoos, and lucky squares for a gold coin donation.

The committee also reached out to businesses, not just from around the Adelaide Hills, but also from Adelaide and the Barossa region. We received some incredible donations that helped make the event such a success. We made sure to thank all the businesses on a slideshow before the movie started and on the Lobethal Kindergarten Facebook page. The event was a hit, with more than 130 tickets sold and a total of \$4,410.25 raised.

Improvements

Amanda and the team worked hard to arrange for a shade sail to be installed over the sandpit play area, giving the children a shaded spot to play. On Saturday, October 26th, we held a Garden Working Bee from 10 am to 1 pm, where kindy families and community members came together to build new garden beds, plant flowers, level out sawdust, and sand the garden edges. It was a great day, with lots of hands-on work and a real sense of community spirit.

Advocacy

Towards the end of the year, we faced a frustrating situation when the Department of Education decided to cut the kindergarten's hours, moving from full-time to part-time for 2025. The governing council didn't agree with this change and worked hard to meet with the Department, hoping to reverse the decision. Unfortunately, the Department wasn't flexible, and no significant changes were made. It was infuriating for everyone involved, especially because the community wasn't consulted before the decision was final.

Concluding the Year

Despite the challenges, we finished the year on a positive note with the kindy concert. Both the Echidna and Gecko groups put on wonderful performances, and families and community members came to celebrate. It was a special moment for the children who were graduating, marking the end of their kindy journey. It was also a great chance for those who joined mid-year to celebrate their first two terms.

As a final highlight, the kindy joined the Lobethal Christmas Pageant, walking down the main street as a walking float. It was a fantastic experience for everyone involved and a perfect way to wrap up the year.

Starting 2025

As we begin another exciting year at Lobethal Community Kindergarten, we look forward to continuing the amazing Intergenerational program with Restvale and the Lobethal village, which has fostered beautiful relationships between generations. This was beautifully showcased during the end-of-year concert when two groups from Restvale and the Lobethal village attended the shows. Additionally, our passionate and dedicated educators are continuing the Bush Kindy program in Bushland Park this year, offering children hands-on experiences with nature.

We extend our best wishes to the new Lobethal Community Kindergarten Governing Council as they embark on their new journey, with most of our time on the council now coming to an end. A huge thank you to our community, families, and most importantly, the wonderful educators here at Lobethal Kindergarten. It has been a whirlwind year, and I am incredibly grateful to have had the opportunity to get to know, work with, and befriend such a dedicated and passionate group of people.

Preschool Attendance

	Term 1	Term 2	Term 3	Term 4
2021 centre	92.6%	95.3%	96.1%	97.4%
2022 centre	92.2%	85.4%	71.4%	79.5%
2023 centre	93.8%	82.8%	92.4%	86.7%
2024 centre	89.5%		84%	

Based on attendances recorded in the two-week reference period each term. Data for eligible enrolments as described in the department's Enrolment policy. Attendance rates may differ to previous reporting with the transfer from calculations based on deemed attendance to actual attendance using booked hours divided by attended hours. Data Source: Department for Education Attendance Data, Semester 1 Report 2024. A blank cell indicates there were no students enrolled.

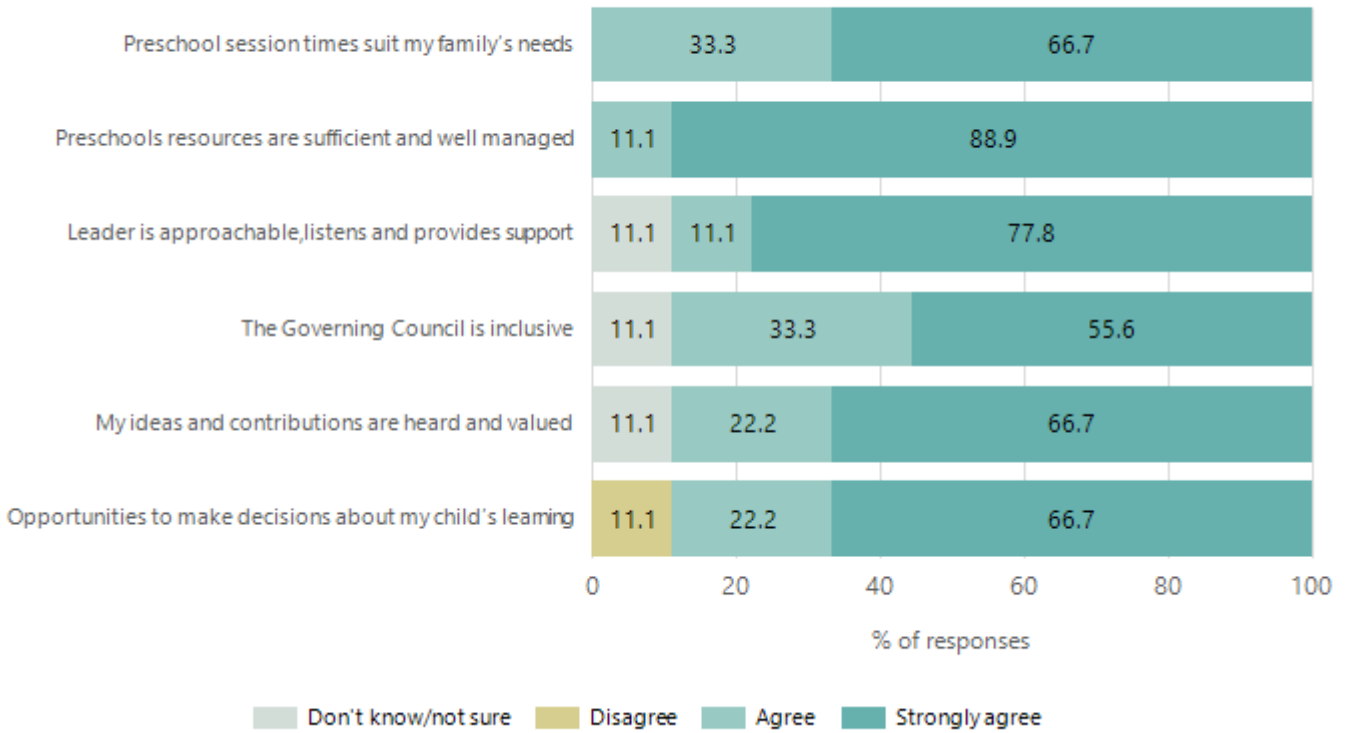
Attendance Comment

In South Australia, preschool attendance is not compulsory, but it is strongly encouraged. Preschool gives children the best opportunity to develop skills, which prepare them for school. These benefits include establishing positive routines and habits, friendships and connections as well as developing communication, problem-solving and creative skills. All children are entitled to access a preschool program over 4 terms the year before they start school.

Our program is typically very well utilised. Illness had a significant impact on attendances in Term 2, along with families taking time off to manage support services appointments, school transitions and family events. We have strong processes in place for communicating with families about absentees.

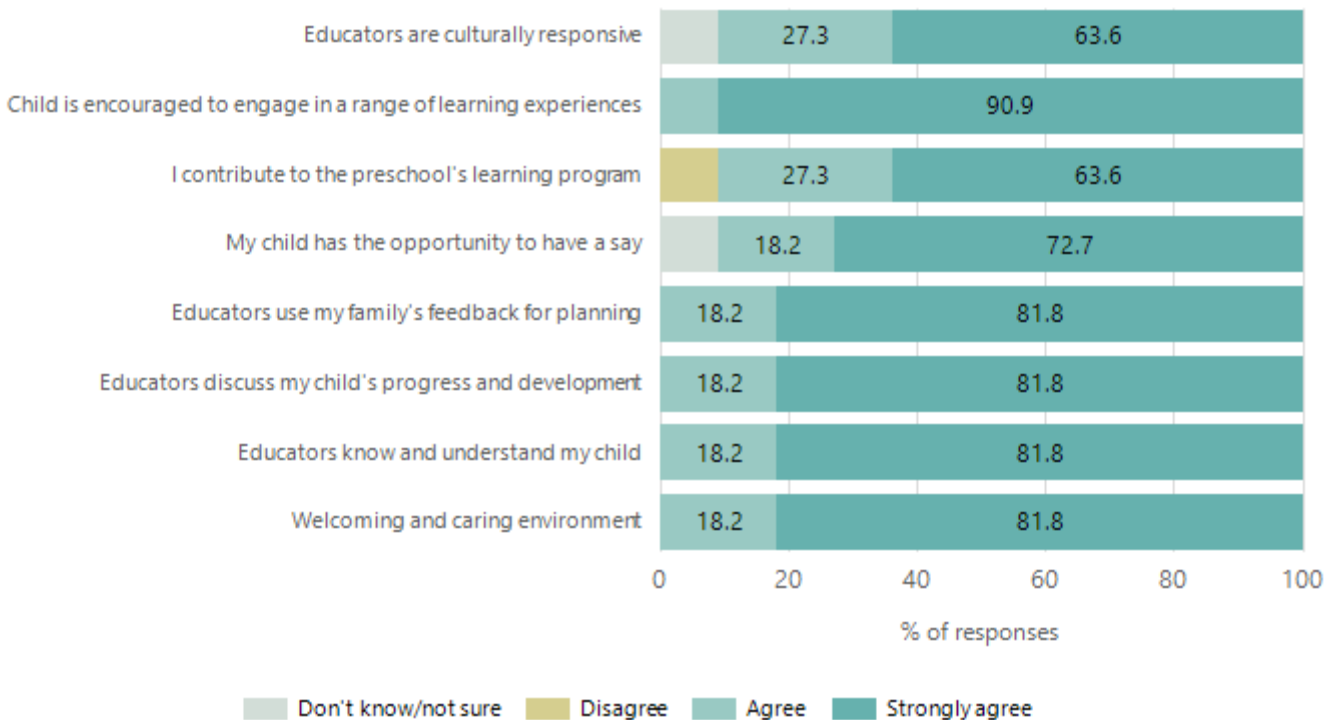
Preschool Family Opinion Survey

Governance, Leadership and Management



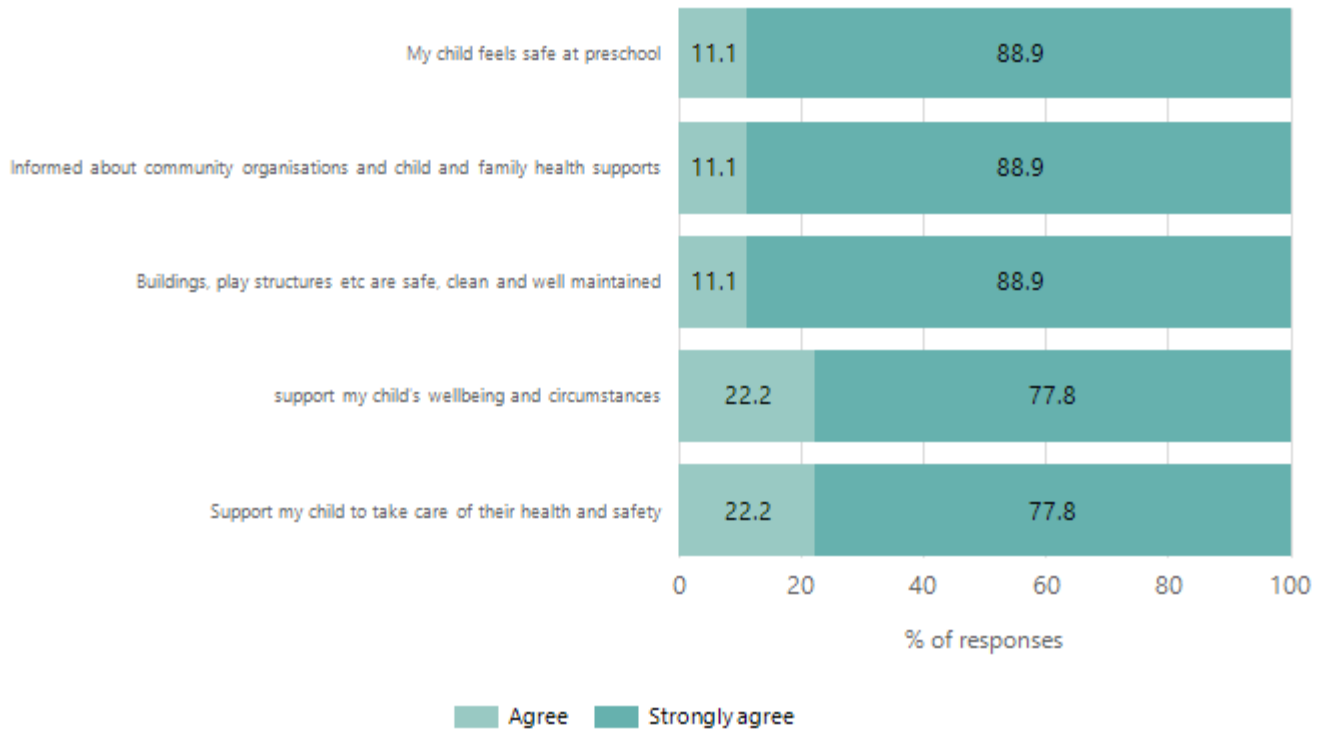
Data Source: 2024 Department for Education Preschool Family Opinions Survey, Term 3 2024.

Quality of Teaching and Learning



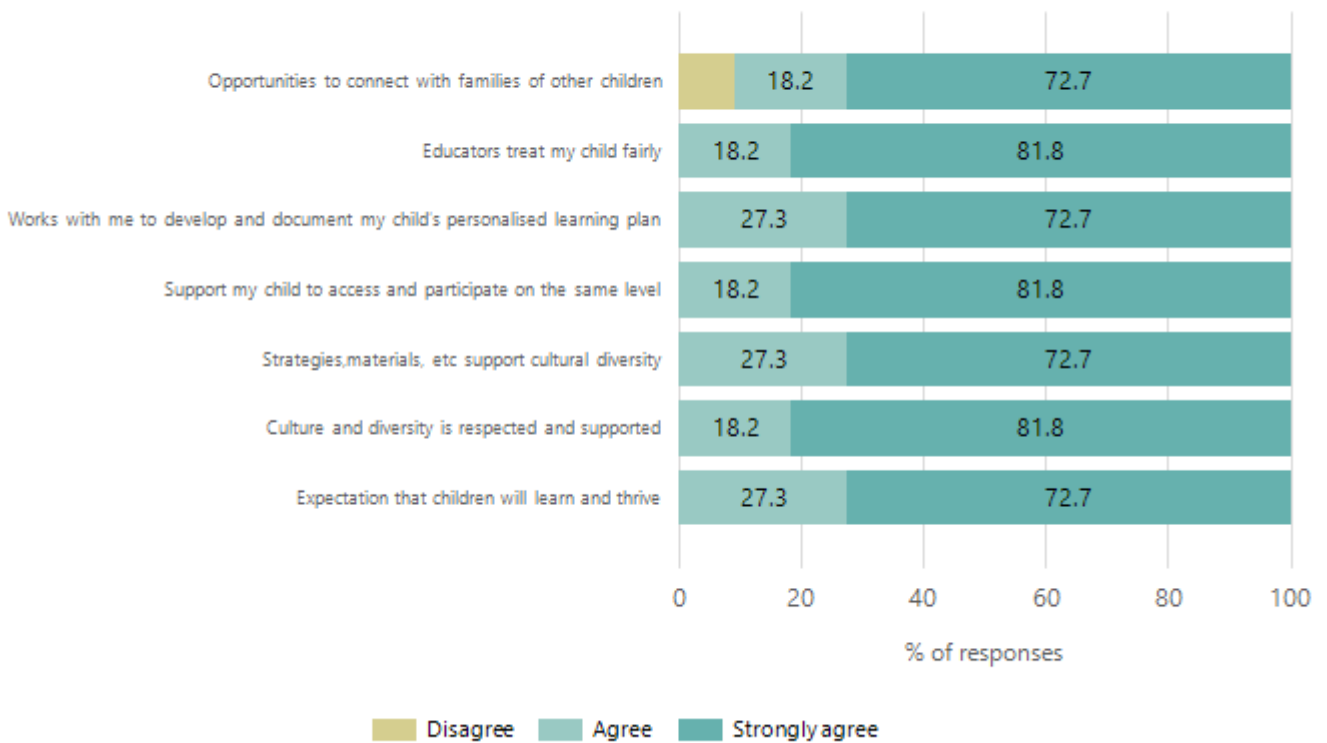
Data Source: 2024 Department for Education Preschool Family Opinions Survey, Term 3 2024.

Safety, Health and Wellbeing



Data Source: 2024 Department for Education Preschool Family Opinions Survey, Term 3 2024.

Support and Inclusion



Data Source: 2024 Department for Education Preschool Family Opinions Survey, Term 3 2024.

Destination Schools

Feeder Schools (Site number - Name)	2022	2023	2024
0136 - Lenswood Primary School	8.3%	6.7%	5.3%
0227 - Lobethal Primary School	41.7%	48.3%	35.1%
0495 - Woodside Primary School	8.3%	5.0%	5.3%
0547 - Birdwood Primary School		10.0%	8.8%
8007 - The Hills Christian Community School	6.3%	3.3%	
9100 - Lobethal Lutheran School	22.9%	21.7%	17.5%
9999 - Unknown	8.3%	5.0%	26.3%

Note: The data is collected in term 3. It does not reflect actual schools enrolled in by existing preschool children. A blank cell indicates there was no data for students enrolled.

Data Source: Department for Education Destination Data Report, 2024.

Highest Qualifications held by the teaching workforce and workforce composition

All teachers at this school are qualified and registered with the SA Teachers Registration Board.

Qualification Level	Number of Qualifications
Bachelor's degrees or Diplomas	1
Postgraduate Qualifications	2

Data Source: Data extracted from Mandatory Workforce Information Collections as on the last pay date of June 2024. As self-reported by staff in the system.

Please note: Data includes staff who are Actively employed and on extended paid leave. Please note only the highest qualification of the Teaching staff is reported. Excludes any number of other certifications earned.

Workforce composition including indigenous staff

	Teaching Staff		Non-Teaching Staff	
	Indigenous	Non-Indigenous	Indigenous	Non-Indigenous
Full-Time Equivalents	0.0	2.4	0.0	1.7
Persons	0.0	3.0	0.0	2.0

Data Source: Data extracted from Mandatory Workforce Information Collection as on the last pay date of June 2024.

Please note: Data includes staff who are actively employed and on extended paid leave. "Indigenous category" is self-reported by staff in the system.

Financial Statement

Funding Source	Amount
Grants: State	\$63198
Grants: Commonwealth	\$2981
Parent Contributions	\$38,603
Fund Raising	\$7916.70
Other	\$4846.15

Data Source: School supplied data.