

2024 annual report to the Community

# Clarence Park Community Kindergarten

Clarence Park Community Kindergarten number: 4617  
Partnership: Greenhill South



Preschool  
director:

Carolyn Harbord

Date of  
endorsement:

28/02/2025



# Context Statement

Information about Clarence Park Community Kindergarten is available on the centres website, as well as the Australian Childrens Education and Care Quality Authority (ACECQA) website.

## Governing Council Report

2024 has been a year of growth, collaboration, and exciting new developments at Clarence Park Community Kindergarten. As the Governing Council, we have had the privilege of working alongside dedicated educators, engaged parents, and an enthusiastic cohort of children to support and enhance the kindergarten experience.

One of the highlights of the year has been the strong sense of community fostered through our events and initiatives. Twilight Kindergarten and Harmony Day provided a wonderful opportunity to bring families together, sharing meals and celebrating cultural diversity. This event reinforced the inclusive and welcoming environment that makes our kindy so special. The Art Show was another standout, transforming the kindy into a gallery where children's artwork was beautifully displayed. Thoughtful curation and enhancements to outdoor play spaces made the experience even more engaging. The Wheel-a-thon was our main fundraiser of the year, incorporating both fitness and community involvement. Parent participation was exceptional, and the event raised enough funds for a bike repair station and more, leaving a lasting impact on our kindy community. Another new and highly successful fundraising initiative was the Movie Day at Capri Cinema. Families enjoyed a fun and engaging cinema experience while supporting the kindy, and this event will now be a mainstay of our fundraising efforts. The year concluded with our End-of-Year Celebrations, where families came together for a relaxed outdoor gathering, featuring a children's performance and a chance to reflect on the year gone by.

A number of facility upgrades took place throughout the year, ensuring our kindy remains a safe and engaging space for children to learn and play. The toilet refurbishments were completed during the July school holidays, improving accessibility. Outdoor play areas also received important enhancements, including the replenishment of bark chips under the swings for added safety and comfort, replacement of footbridge handrails for improved stability, and a top-up of sand in the sandpit to enhance outdoor sensory play opportunities. Additionally, a new chicken coop was built in Term 2, introducing an exciting new element to outdoor learning and fostering a sense of responsibility among the children.

Another major milestone this year was the introduction of Kindy Care, which will provide before-and-after-kindergarten care. Clarence Park Kindy was selected as a trial site for this initiative, which is set to launch in early 2025. This will be an exciting opportunity to enhance support for families and expand the kindy's offerings, ensuring a more flexible and accessible early learning experience.

Thank you to our dedicated educators, council members, and families for their ongoing commitment and support. It has been a privilege to serve as Chairperson, and I look forward to seeing the next council continue to build upon the successes of this year.

Luke Harris

Chairperson

# Preschool Attendance

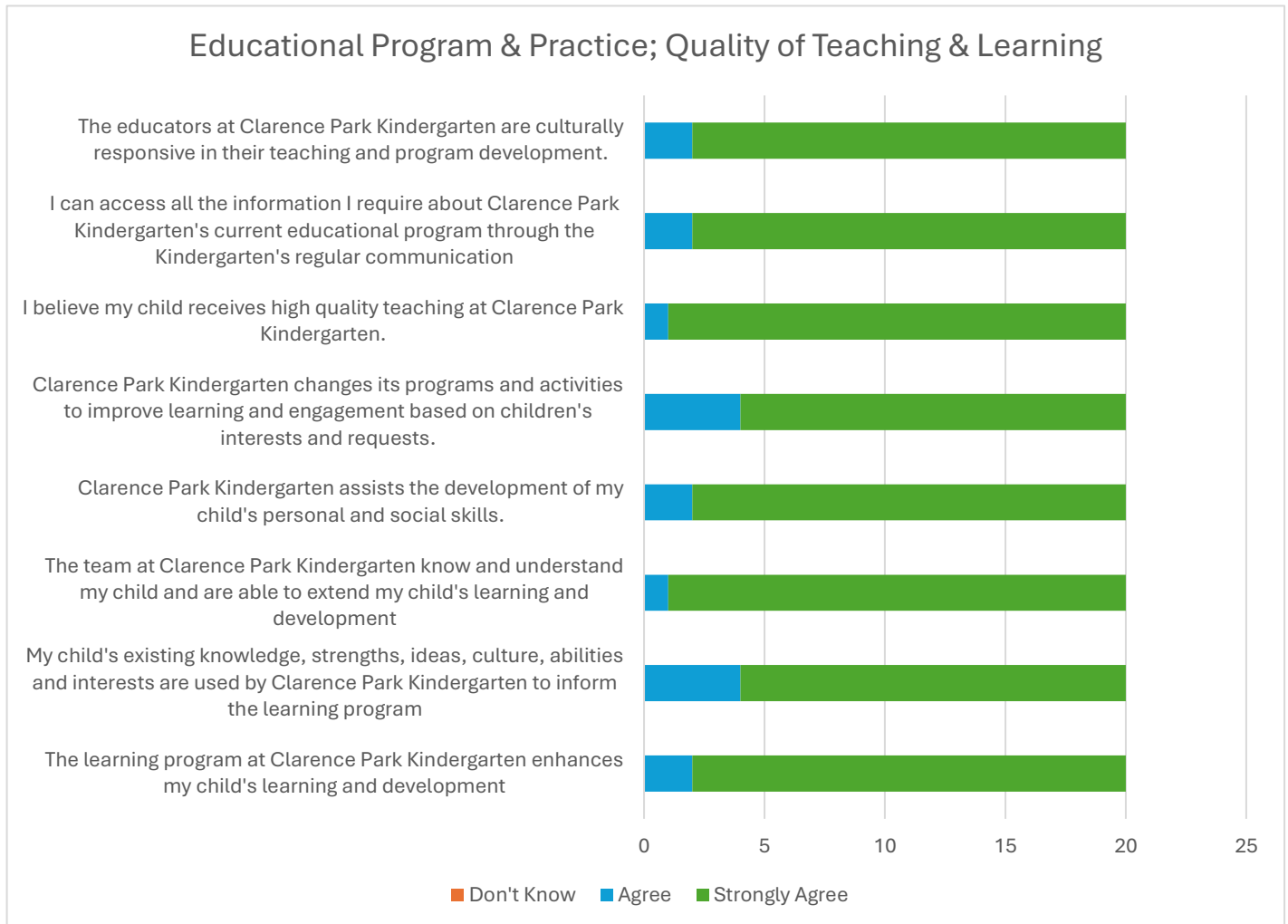
	Term 1	Term 2	Term 3	Term 4
2021 centre		94.3%	96.9%	92.1%
2022 centre	94.5%	85.7%	92.8%	89.3%
2023 centre	85.3%	92.1%	91.4%	91.2%
2024 centre	87.8%		86%	

Based on attendances recorded in the two-week reference period each term. Data for eligible enrolments as described in the department's Enrolment policy. Attendance rates may differ to previous reporting with the transfer from calculations based on deemed attendance to actual attendance using booked hours divided by attended hours. Data Source: Department for Education Attendance Data, Semester 1 Report 2024. A blank cell indicates there we no students enrolled.

# Attendance Comment

In South Australia, preschool attendance is not compulsory, but it is strongly encouraged. Preschool gives children the best opportunity to develop skills, which prepare them for school. These benefits include establishing positive routines and habits, friendships and connections as well as developing communication, problem-solving and creative skills. All children are entitled to access a preschool program over 4 terms the year before they start school.

# Preschool Family Opinion Survey

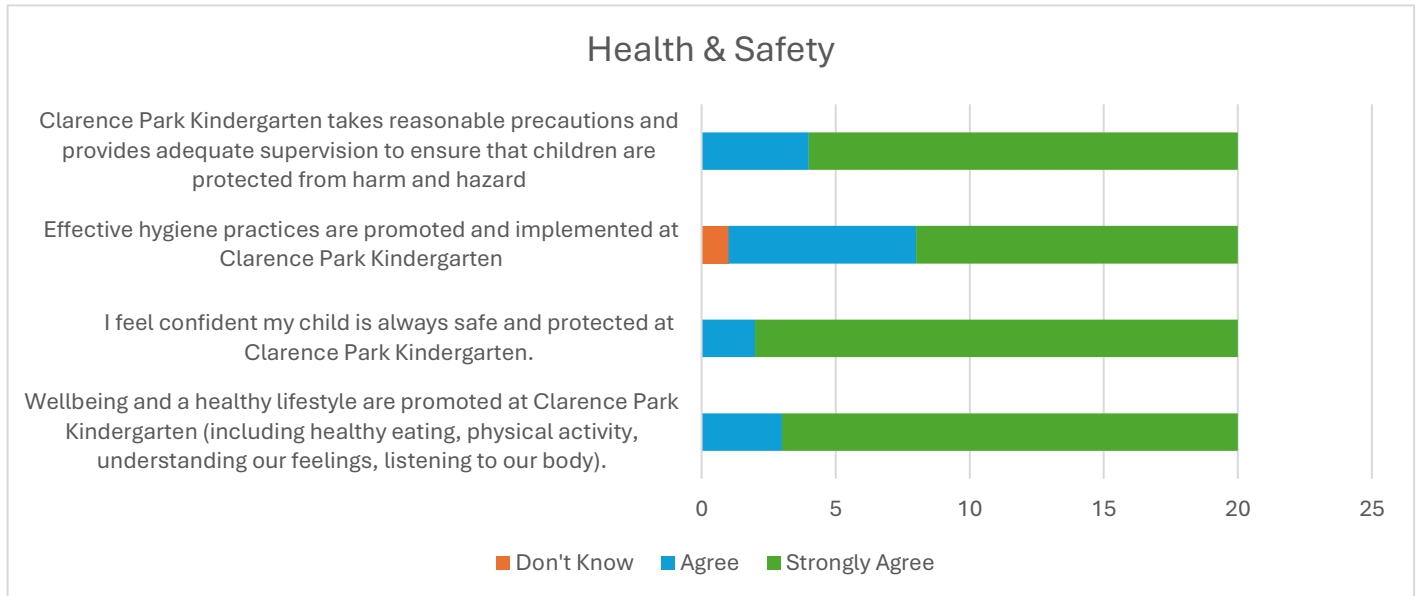


## Educational Program & Practice; Quality of Teaching & Learning Feedback

- As a teacher myself, I have a deep appreciation for the time, effort, and care that all the staff at Clarence Park Kindergarten invest in creating such a nurturing and inclusive environment. It's clear that each child's
- I highly recommend this kindergarten nice team and they taking care of kids in a good way especially Carolyn who lead the kindy team and kids in a better way and hats off to her. Thank you. I am very much interested to send my other kid in this kindy for best facilitators.
- Thank you for your contributions on our children development.
- Just a wonderful experience and gave my son so much. The support and kindness the teaching staff showed was second to none and I appreciate all the effort so much. A wonderful place of learning and growing up.
- Absolutely love Clarence Park Kindy. My son loves it.
- Everything about Carolyn and CPCK is amazing. My son has been well supported and has transitioned easily to school. I'm sad we only get to have a single year with CPCK.
- Thank you for using Seesaw to keep us up to date with their activities and learning. My child has really come a long way to school readiness this year. Thank you for being such a nurturing and caring environment and developing their independence. The curriculum has exceeded my expectations, thanks for offering a wide range of learning experiences and excursions.
- I believe the CPCK provided a very good grounding for schooling - the step to school is much smaller thanks to CPCK.
- Great communication each week from the kindergarten. Teachers are engaging and patient and adapt to child's needs. We are so happy that we landed in this kindy without knowing anything about it prior to enrolling! The staff have been very patient with him adapting to kindergarten at the start of the year. I think the safe and responsive learning

environment at CPCK has helped him cope with the recent orientation days for school next year (although he is anxious, he seems to trust that it will be a safe place too). Thank you!

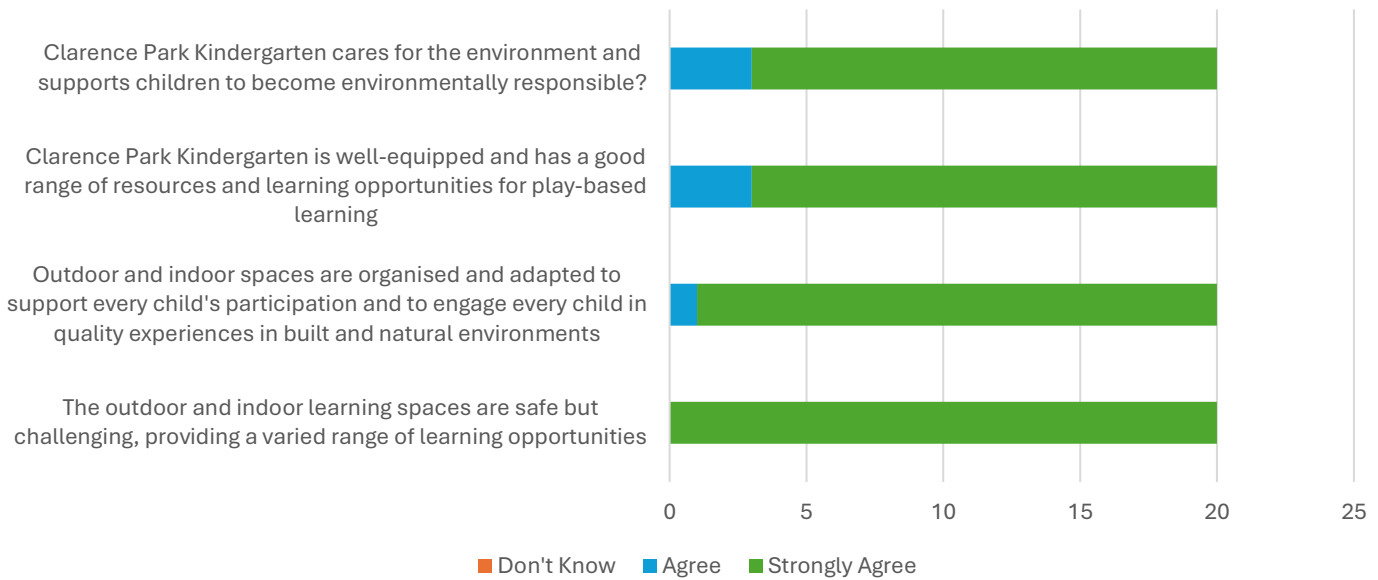
- Exceptional. I can't believe think of no single negative feedback comment.
- This is the greatest place on earth for children
- They were great at all the things, initially we tried to put my kid in another Kindy as it was referred to us as best kindy around our area but we decided to put her hear a this is under catchment area but now we feel we have made a right decision on enrolling my daughter here, she developed lot of things and also her behaviour has been improved well comparatively.



#### Health & Safety Feedback

- Best in health and safety
- Have been able to trust he will be well looked after even on excursions to the city, etc.
- This isn't a big deal, but I would prefer that children are not told that they "have" to eat their fruit before other snack food by staff, or that certain foods are not ok at kindy. I think children can listen to their bodies and if they want to eat something else as well as, or instead, of fruit, I think that is ok. I just don't want my child thinking some foods are bad and good, or that we need to eat the "good" foods before we eat the "bad" foods. My child has come home talking a lot about this.
- I wish she could stay longer.
- Exceptional

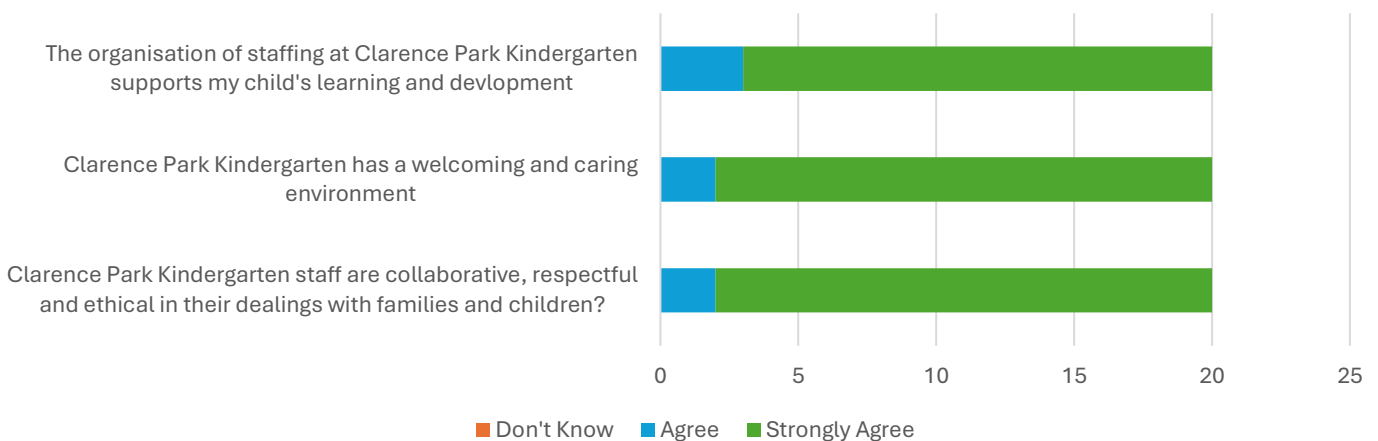
## Physical Environment



### Physical Environment Feedback

- Good environment for kids to play and learn.
- Yes, the outdoor space is always used in different and engaging ways to re-stimulate the children. Remembering the box train and when they got to jump off barrels and of course the water slide day.
- Love the nature play based learning and Glenn the junk man
- Lucky to have such a good outdoor area at CPK
- Great play area outside- love to see the way he experiments with textures and the environment in learning updates.
- Love it!
- Lovely and interactive play area.

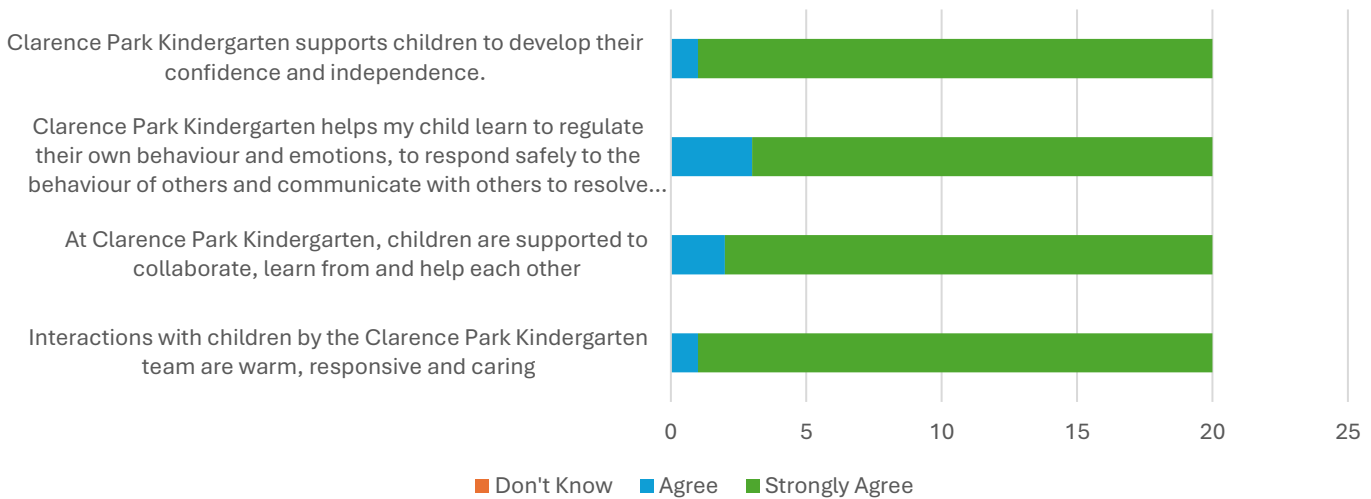
## Staffing



### Staffing Feedback

- Best staff here.
- So pleased with how welcoming the kindy staff have been with my child. All the staff are so warm and receptive. Especially for a sensitive child, it has made a huge difference.
- Wonderful and nurturing staff. Cannot praise them enough.

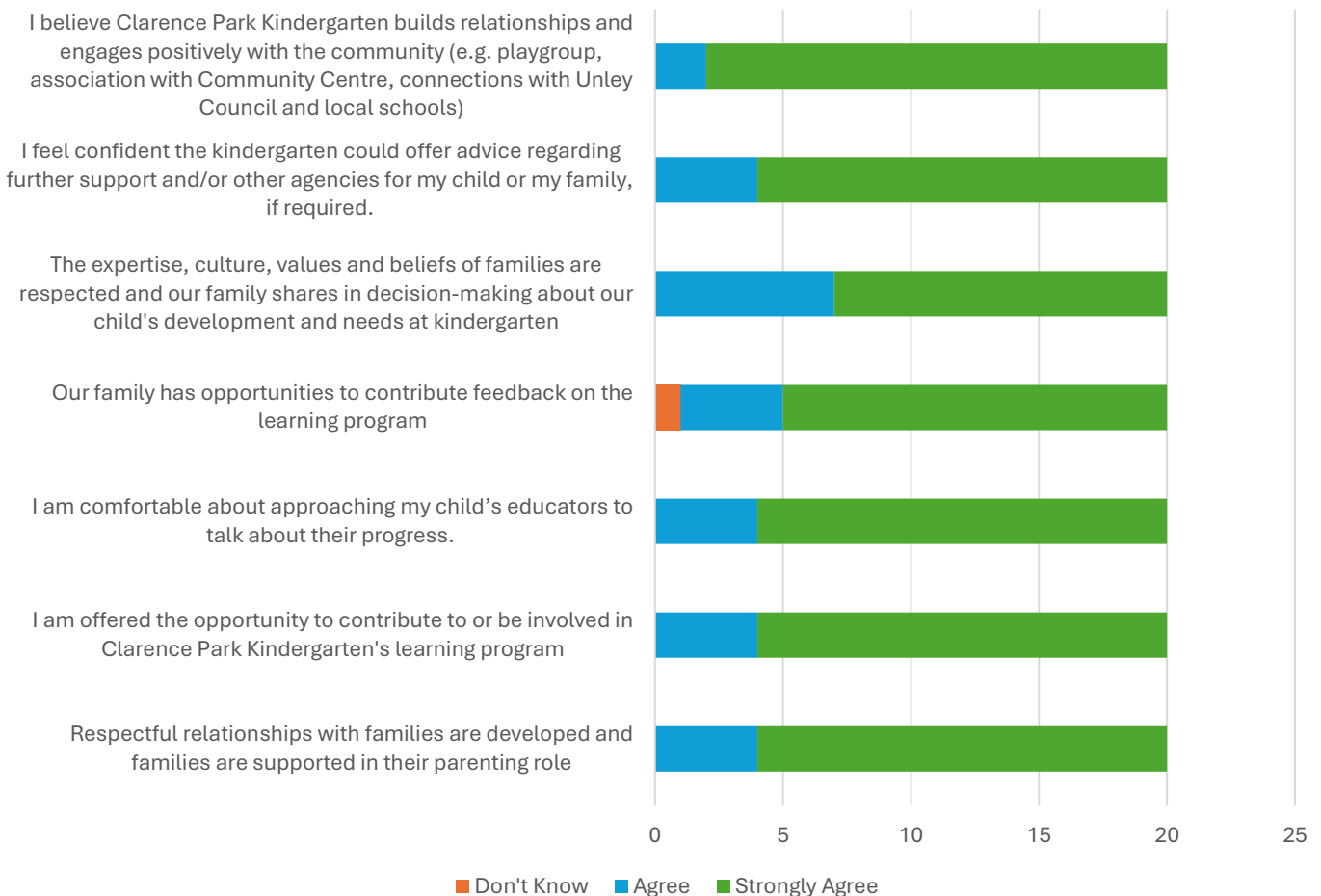
## Relationships with Children



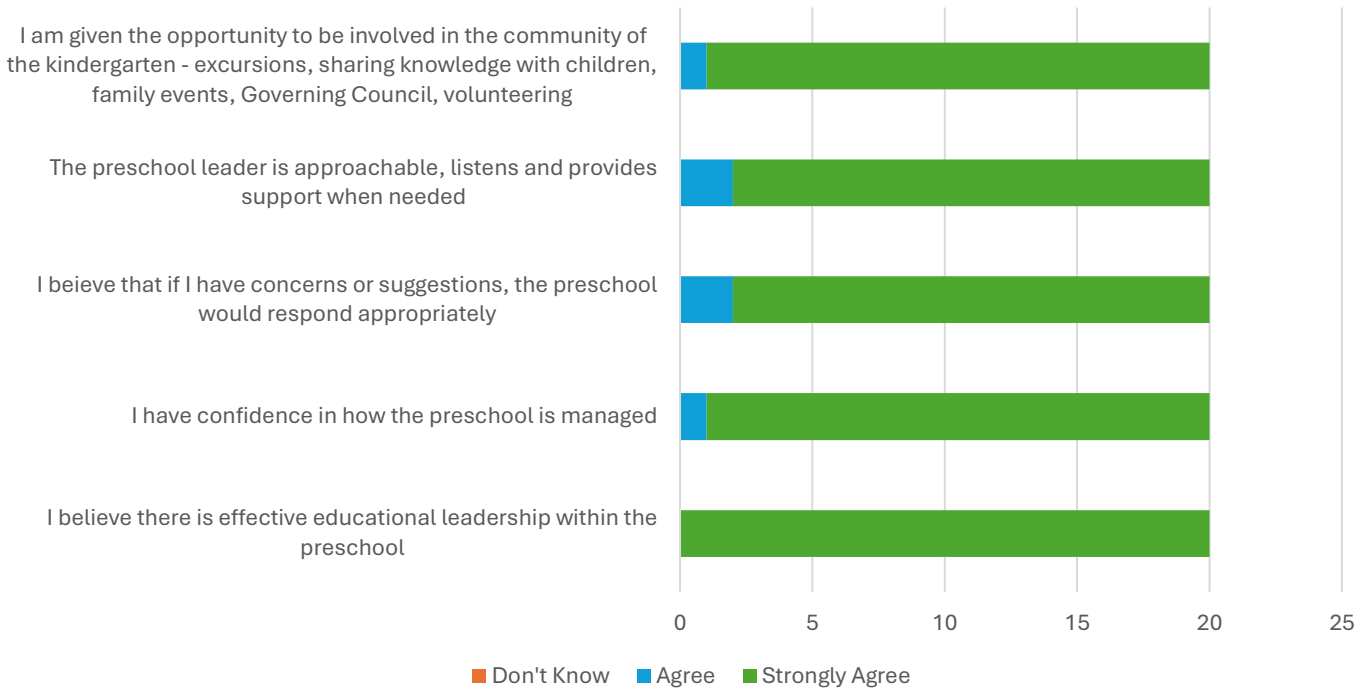
### Relationships with Children Feedback

- My son took a while to settle in and we were given such useful advice to support us to get him involved with the other children more and form some great friendships.
- The staff are lovely and have been very responsive and understanding with my child.
- Really seem to have a good idea how my child is going, and how to support.

## Relationships with Families and the Community



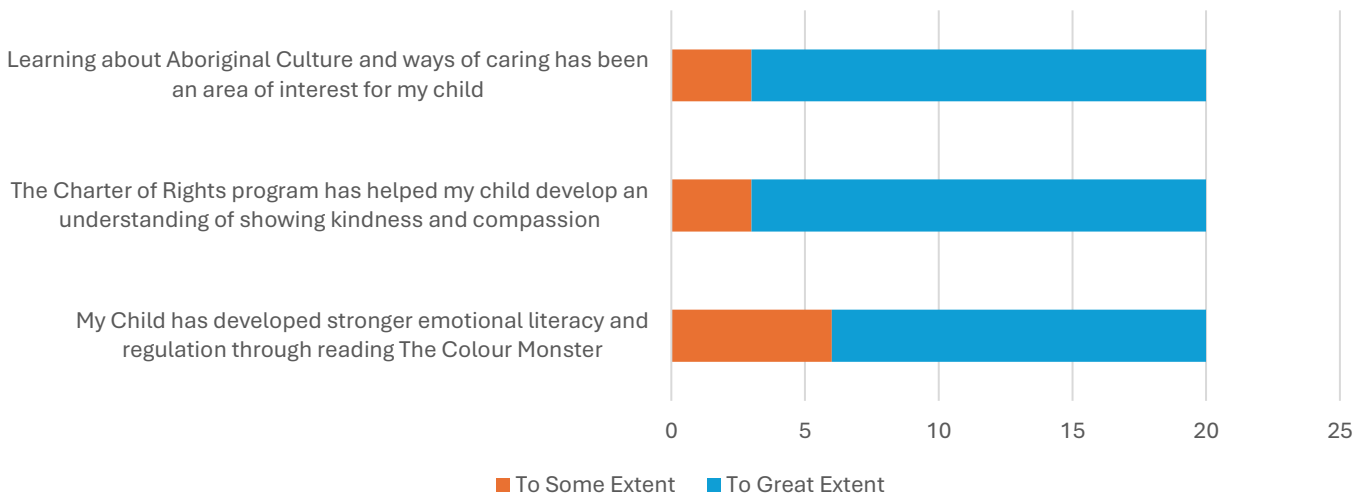
## Leadership



### Leadership Feedback

- I am incredibly happy with the way the kindergarten is run and want to express my gratitude for the dedication to creating such a wonderful environment for the children.
- Very strong community feel
- Strong leadership which seeks and responds to feedback

## Various



### Aboriginal Culture Feedback

- I have appreciated the amount of time spend teaching the children about the Aboriginal culture and the use of Kurna language. My son has enjoyed Trent's stories and visits to the kindergarten.
- So valuable and important.
- Visits by Aboriginal people were always commented upon.
- Often something my child tells me about without prompting at home.
- This was great and my child really enjoyed this and their connection to the land I fully support it.



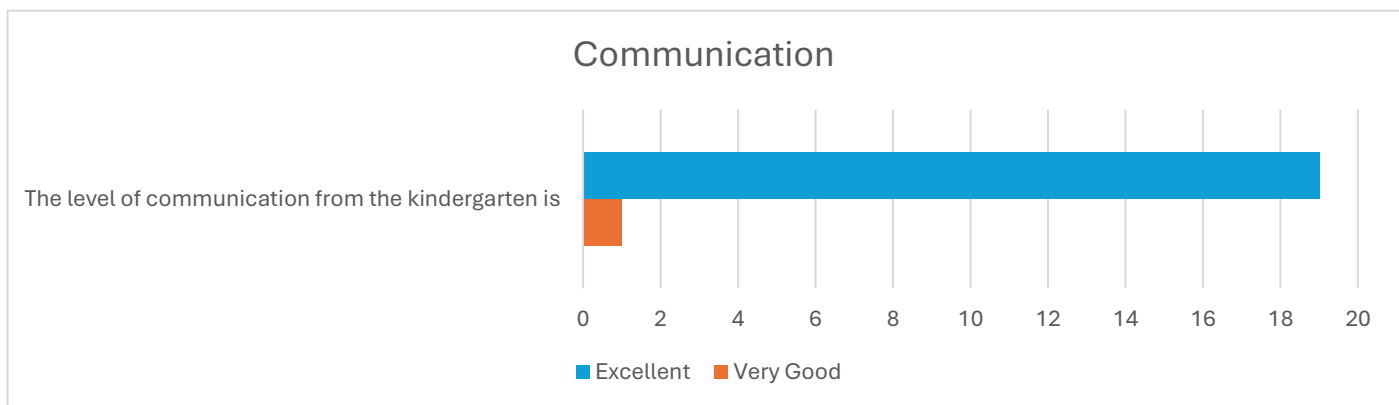
- Learning about Aboriginal culture is important.

### Charter of Rights feedback

- My son has often reflected and proudly told us when he has received a Charter of Rights.
- Has been excellent to acknowledge good deeds.
- Great program, kids were very involved in this and drove good outcomes.
- It's a great way to show the whole class when someone has done something special, thoughtful, helpful or kind.
- It's been the greatest tool ever and she loves it.

### Colour Monster Feedback

- The Colour Monster has been a great tool for emotional regulation that we have also used at home.
- Have loved the concept of colour monsters, we also discuss at home.
- It's been a good springboard to talk about emotions and even about how we can be two colours at once or feel more than one emotion about something.
- I also appreciated the parents' session from the psychologist as children learn self-regulation through co-regulation with us.
- The colour monster is a great book and I strongly believe it has helped my child with a deeper understanding of emotions.



### Communication Feedback

- Very thorough and thoughtful.
- Receive communication more frequently than I expected. It is lovely to learn about what has been happening at kindy each week and allows me to imitate a discussion with my child about it. Reminders are appreciated for events / excursions, and I can never say I wasn't advised enough about anything I need to do (e.g. excursions, concerts, bike days etc) Fantastic communication.
- Always free for a friendly chat.
- Always regular feedback and updates via See saw.
- Everything about CPCK is excellent and there is nothing that they could better than what they are currently doing.
- As children are now at school the feedback from the teacher is interesting - the CPCK children are well behaved and easy to get into a school routine - that says something good about CPCK and getting children ready for the next step.
- Thank you for everything you do!!!

# Destination Schools

Feeder Schools (Site number - Name)	2022	2023	2024
0156 - Goodwood Primary School		3.5%	12.3%
0475 - Westbourne Park Primary School	13.6%	17.2%	26.3%
0548 - Black Forest Primary School	70.5%	51.7%	33.3%
9999 - Unknown	11.4%	19.0%	15.8%

Note: The data is collected in term 3. It does not reflect actual schools enrolled in by existing preschool children. A blank cell indicates there was no data for students enrolled.

Data Source: Department for Education Destination Data Report, 2024.

# Highest Qualifications held by the teaching workforce and workforce composition

All teachers at this school are qualified and registered with the SA Teachers Registration Board.

Qualification Level	Number of Qualifications
Postgraduate Qualifications	3

Data Source: Data extracted from Mandatory Workforce Information Collections as on the last pay date of June 2024. As self-reported by staff in the system.

Please note: Data includes staff who are Actively employed and on extended paid leave. Please note only the highest qualification of the Teaching staff is reported. Excludes any number of other certifications earned.

## Workforce composition including indigenous staff

	Teaching Staff		Non-Teaching Staff	
	Indigenous	Non-Indigenous	Indigenous	Non-Indigenous
Full-Time Equivalents	0.0	2.9	0.0	0.9
Persons	0.0	3.0	0.0	2.0

Data Source: Data extracted from Mandatory Workforce Information Collection as on the last pay date of June 2024.

Please note: Data includes staff who are actively employed and on extended paid leave. "Indigenous category" is self-reported by staff in the system.

## Financial Statement

Funding Source	Amount
Grants: State	\$462,368
Grants: Commonwealth	\$0
Parent Contributions	\$42,600
Fund Raising	\$6620
Other	\$880

Data Source: School supplied data.