

2024 annual report to
the Community

Banksia Park Kindergarten

Banksia Park Kindergarten number: 4604

Partnership: Tea Tree Gully



Preschool director:

Mgreen

Date of endorsement:

11/02/2025



Government
of South Australia
Department for Education

Context Statement

Information about Banksia Park Kindergarten is available on the centres website, as well as the Australian Childrens Education and Care Quality Authority (ACECQA) website.

Governing Council Report

Being a part of the Governing Council in 2024 was a wonderful experience. It was inspiring to see the hard work of the kindy educators and be a part of a welcoming team that wanted the best for all the children within the community of Banksia Park Kindergarten.

The kindy provided an enriching and nurturing space for children to flourish, and the governing council was a space where we could encourage and support the kindy to continue this important work. The council was able to contribute to the kindy by supporting incredible events such as the family campfire night, grandparents' day, wheels day and the Christmas concert in the park. We were privileged to approve improvements to the site such as the outdoor learning space which brought such joy to the children as they were able to watch the works take place and could take place thanks to the efforts of many in the Cookie Dough Fundraising drive.

Children are considered holistically at Banksia Park Kindy, as the curriculum covers areas such as early literacy and numeracy skills, but also teaches the Zones of Regulation, and includes so many incredible visitors that provide such enriching learning. In 2024 we had visits from Gaye the Gardening Lady and kids were able to grow, cook and eat their own vegetables and herbs, visits from SAPOL, musicians, a vet, an artist and family members from varied cultural backgrounds.

The kindy supports the transition to school by providing many opportunities to visit the primary school, be involved in the book week parade, have visits at the kindy from students at the school and attend school assemblies. Having a representative from the school at the Governing Council meetings at times grew the relationship between the two sites and council members feel a first connection to the school.

I am very grateful to Meg and the Banksia Park Kindy team for welcoming me to Governing Council, sharing their expertise and helping me feel a part of this incredible community and the important work they do. I will certainly miss being a part of the community at Banksia Park Kindy!!

Preschool Attendance

	Term 1	Term 2	Term 3	Term 4
2021 centre		100%	92.2%	93.3%
2022 centre	81.5%	82.2%	66.1%	93%
2023 centre	85.2%	91.2%	84.6%	65.1%
2024 centre	72.5%		83.7%	

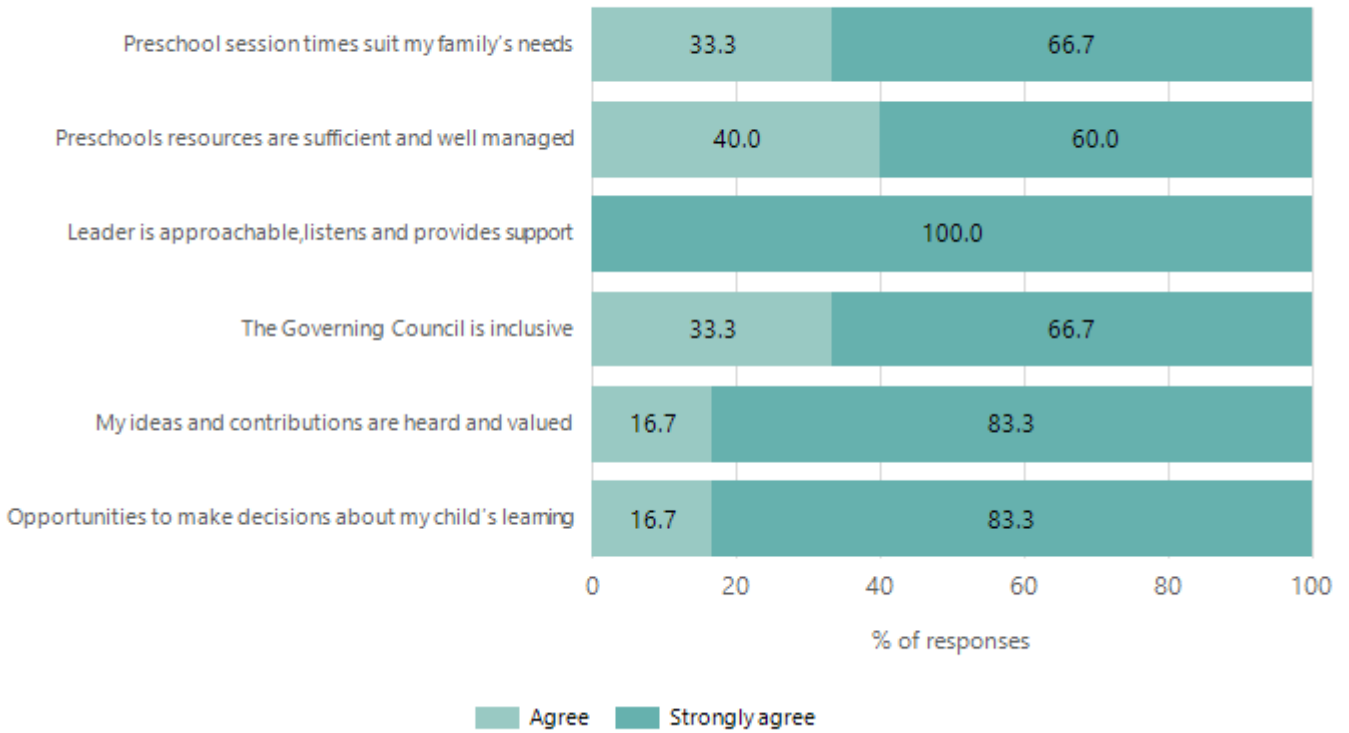
Based on attendances recorded in the two-week reference period each term. Data for eligible enrolments as described in the department's Enrolment policy. Attendance rates may differ to previous reporting with the transfer from calculations based on deemed attendance to actual attendance using booked hours divided by attended hours. Data Source: Department for Education Attendance Data, Semester 1 Report 2024. A blank cell indicates there were no students enrolled.

Attendance Comment

In South Australia, preschool attendance is not compulsory, but it is strongly encouraged. Preschool gives children the best opportunity to develop skills, which prepare them for school. These benefits include establishing positive routines and habits, friendships and connections as well as developing communication, problem-solving and creative skills. All children are entitled to access a preschool program over 4 terms the year before they start school.

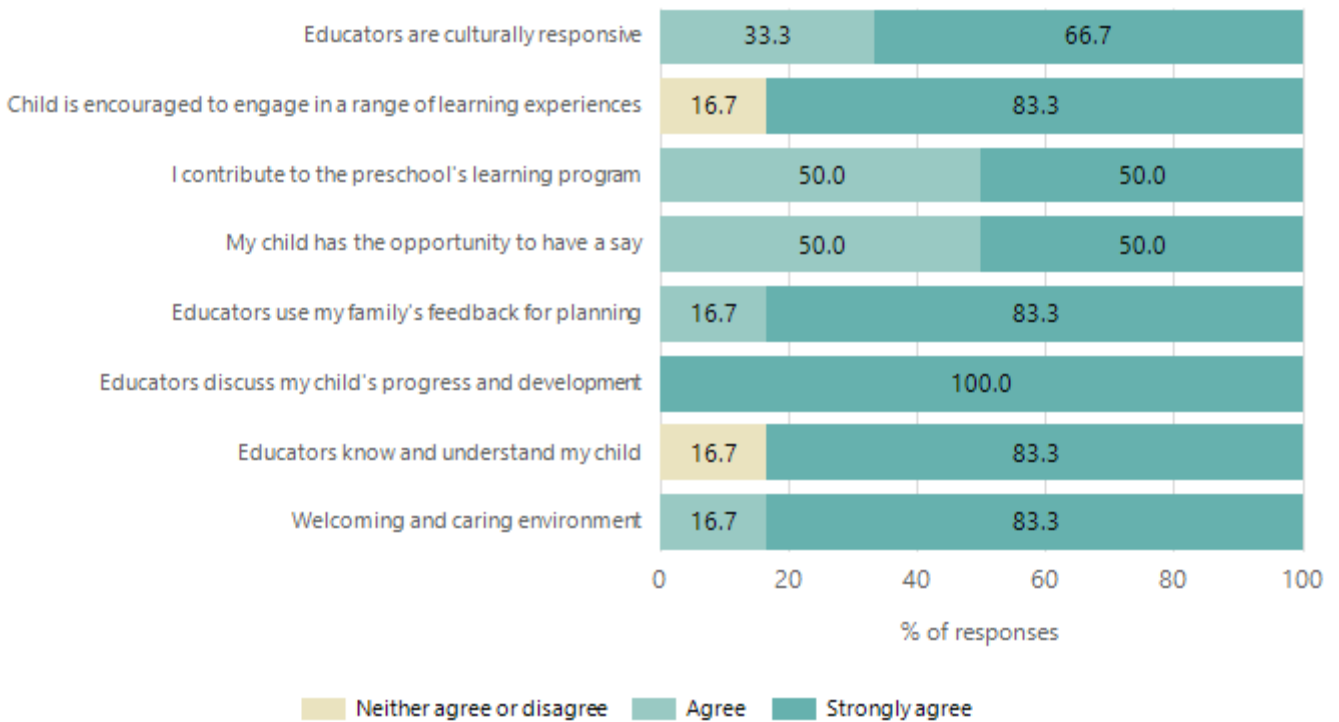
Preschool Family Opinion Survey

Governance, Leadership and Management



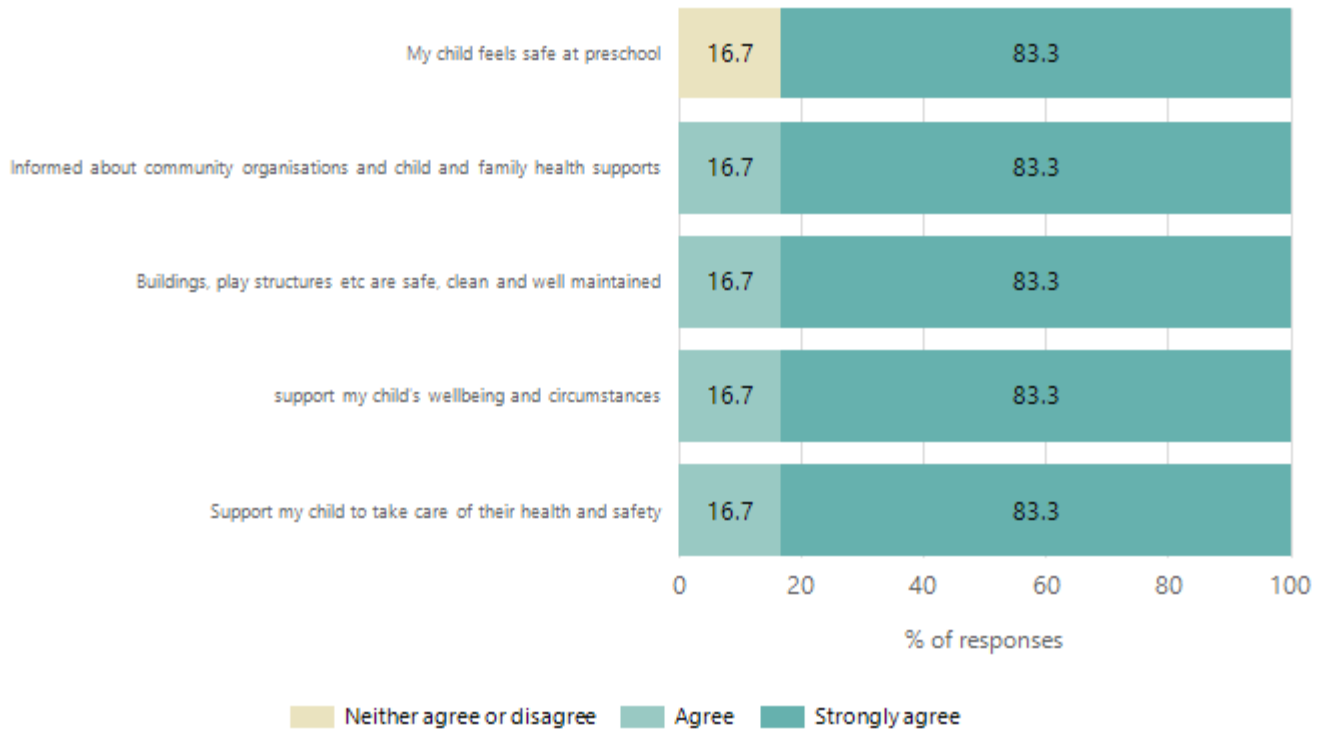
Data Source: 2024 Department for Education Preschool Family Opinions Survey, Term 3 2024.

Quality of Teaching and Learning



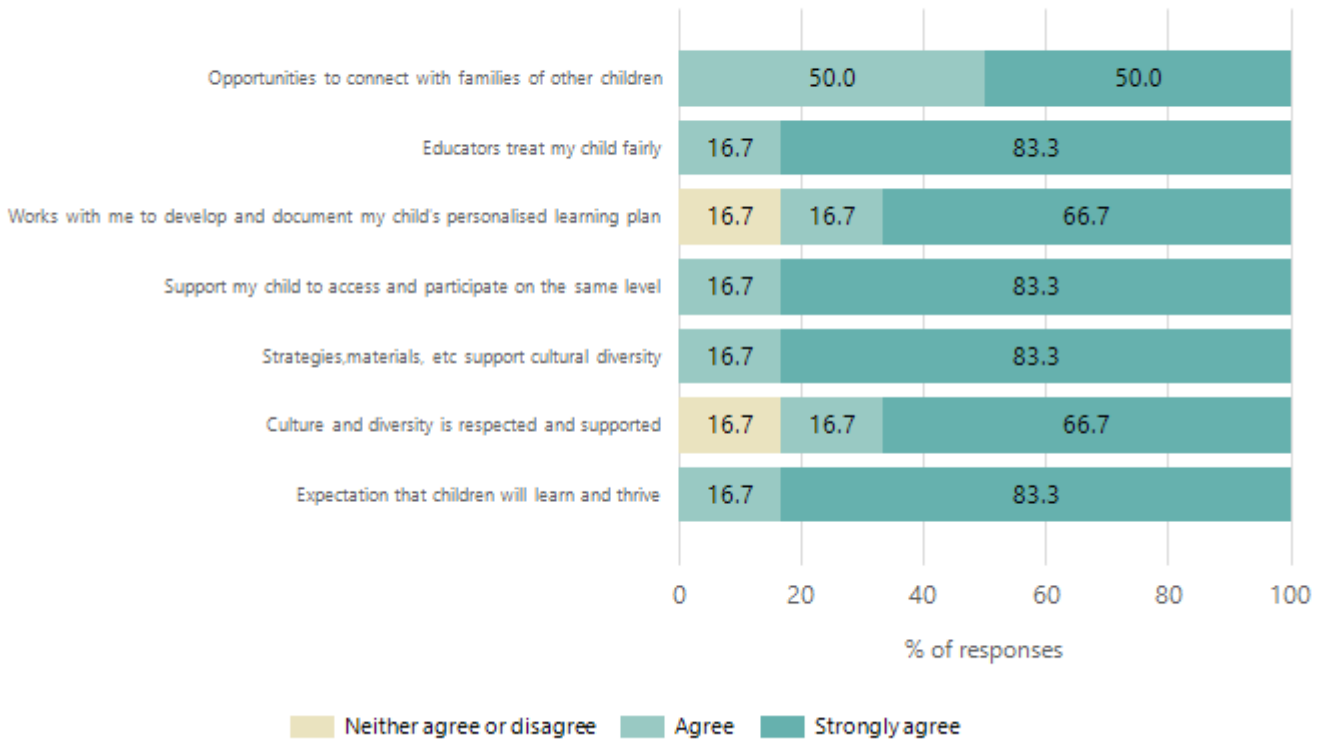
Data Source: 2024 Department for Education Preschool Family Opinions Survey, Term 3 2024.

Safety, Health and Wellbeing



Data Source: 2024 Department for Education Preschool Family Opinions Survey, Term 3 2024.

Support and Inclusion



Data Source: 2024 Department for Education Preschool Family Opinions Survey, Term 3 2024.

Destination Schools

Feeder Schools (Site number - Name)	2022	2023	2024
1015 - Banksia Park School R-6	83.9%	43.9%	14.6%
1103 - Fairview Park Primary School	3.2%	4.9%	
8385 - Saint David's Parish School		4.9%	9.8%
8411 - Torrens Valley Christian School			7.3%
9999 - Unknown	12.9%	43.9%	56.1%

Note: The data is collected in term 3. It does not reflect actual schools enrolled in by existing preschool children. A blank cell indicates there was no data for students enrolled.

Data Source: Department for Education Destination Data Report, 2024.

Highest Qualifications held by the teaching workforce and workforce composition

All teachers at this school are qualified and registered with the SA Teachers Registration Board.

Qualification Level	Number of Qualifications
Bachelor's degrees or Diplomas	1
Postgraduate Qualifications	1

Data Source: Data extracted from Mandatory Workforce Information Collections as on the last pay date of June 2024. As self-reported by staff in the system.

Please note: Data includes staff who are Actively employed and on extended paid leave. Please note only the highest qualification of the Teaching staff is reported. Excludes any number of other certifications earned.

Workforce composition including indigenous staff

	Teaching Staff		Non-Teaching Staff	
	Indigenous	Non-Indigenous	Indigenous	Non-Indigenous
Full-Time Equivalents	0.0	1.3	0.0	0.8
Persons	0.0	2.0	0.0	3.0

Data Source: Data extracted from Mandatory Workforce Information Collection as on the last pay date of June 2024.

Please note: Data includes staff who are actively employed and on extended paid leave. "Indigenous category" is self-reported by staff in the system.

Financial Statement

Funding Source	Amount
Grants: State	379784.98
Grants: Commonwealth	
Parent Contributions	19490
Fund Raising	856
Other	1381.47

Data Source: School supplied data.