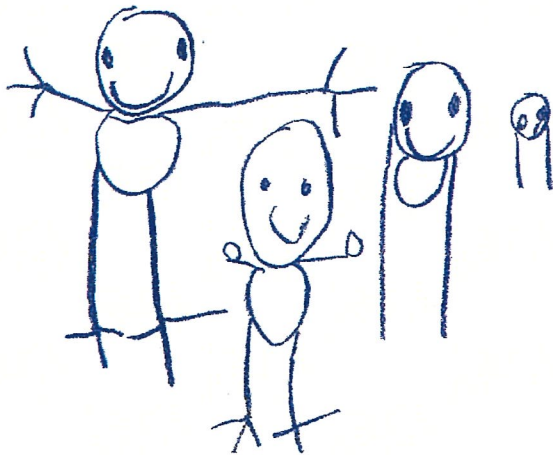
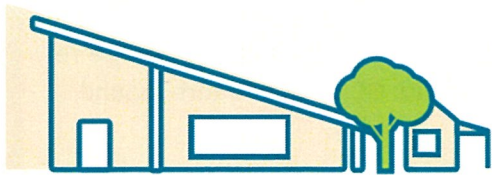


Port Elliot



Kindergarten



2024 annual report to the Community

## Port Elliot Kindergarten

Port Elliot Kindergarten number: 3697

Partnership: Fleurieu



Preschool director:

Sarah Mack

A handwritten signature in black ink, appearing to read 'Sarah Mack'.

Signature

Date of endorsement:

21/02/2025



Government  
of South Australia  
Department for Education

# Context Statement

Information about Port Elliot Kindergarten is available on the centres website, as well as the Australian Childrens Education and Care Quality Authority (ACECQA) website.

## Governing Council Report

The year started off with an enjoyable meeting, eating snacks, saying goodbye to last year’s Governing Council members and handing over the reins to the new 2024 GC members while the kids played outside. It was great that some of the 2023 GC members stayed on and became an integral part of this years team.

This year we focused on the core values we thought were important for the kindy including the kids and families. After some discussion we came up with Community, Equity, Belonging and Curiosity.

We also did an Enneagram each which was quite interesting to find out your personality type.

Part of the core values was to get the parents to feel a sense of community and belonging and we organised two “Grown up gatherings” at the Joinery in Port Elliot. They were lots of fun in an intimate space and it was great to connect with other parents at the kindy and with the use of games and activities, it helped to break the ice with getting to know new people.

Sarah had some great questions and games and also had some learning literature around regulation strategies for parents.

Throughout the year we discussed how it’s hard to get people to come to events and get involved and perhaps we’re not as connected culturally as we used to be. This is something we encourage any future GC to try and turn around, and is something the kindy staff are passionate about too.

In the middle of the year, under fairly lights, we held an Art exhibition at the kindy which was an amazing night. Lots of family’s came to enjoy a BBQ and delicious soup, chatting to other parents and staff while having a look at the children’s art. Some of which were shown at the Coral Street Art Space. We were all invited to help paint a collaborative dot painting also. There were smiles all round and the kids really felt a sense of accomplishment and belonging.

The GC went out to local business who donated everything from food, cups and lighting for the event to go ahead.

The End of year celebration was another fantastic night with so many families attending. The weather looked horrendous and not so good for Ratalang so it was moved to the shelter of Horseshoe bay and Port Elliot surf club. The kids were presented with their journals and showed us songs they’d learnt and Sarah even started a song A Capella with the kids following then the parent joining in also. The GC made lots and lot of bunting using paintings the kids had done on large sheets of paper only to find last year’s bunting hidden away! This was hung up outside and around the surf club for the celebration.

Thanks to the kindy staff who do an incredible job at not only teaching our children, but helping them to feel connected to country and our community and most importantly, like they belong.

## Preschool Attendance

	Term 1	Term 2	Term 3	Term 4
2021 centre	90.2%	71.8%	83.9%	80.1%
2022 centre	87.5%	79.2%	70.8%	66%
2023 centre	89.6%	81.7%	84.3%	83.1%
2024 centre	91.6%		81.3%	

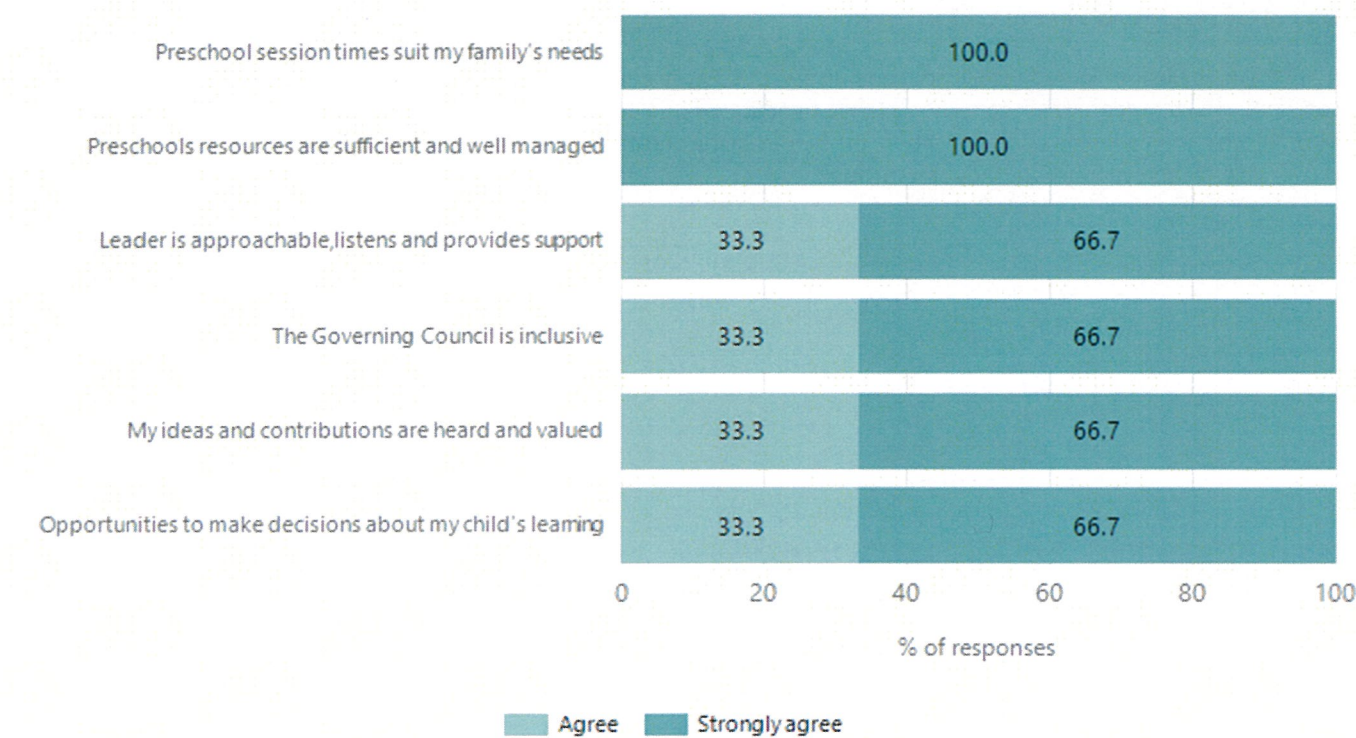
Based on attendances recorded in the two-week reference period each term. Data for eligible enrolments as described in the department's Enrolment policy. Attendance rates may differ to previous reporting with the transfer from calculations based on deemed attendance to actual attendance using booked hours divided by attended hours. Data Source: Department for Education Attendance Data, Semester 1 Report 2024. A blank cell indicates there we no students enrolled.

# Attendance Comment

In South Australia, preschool attendance is not compulsory, but it is strongly encouraged. Preschool gives children the best opportunity to develop skills, which prepare them for school. These benefits include establishing positive routines and habits, friendships and connections as well as developing communication, problem-solving and creative skills. All children are entitled to access a preschool program over 4 terms the year before they start school.

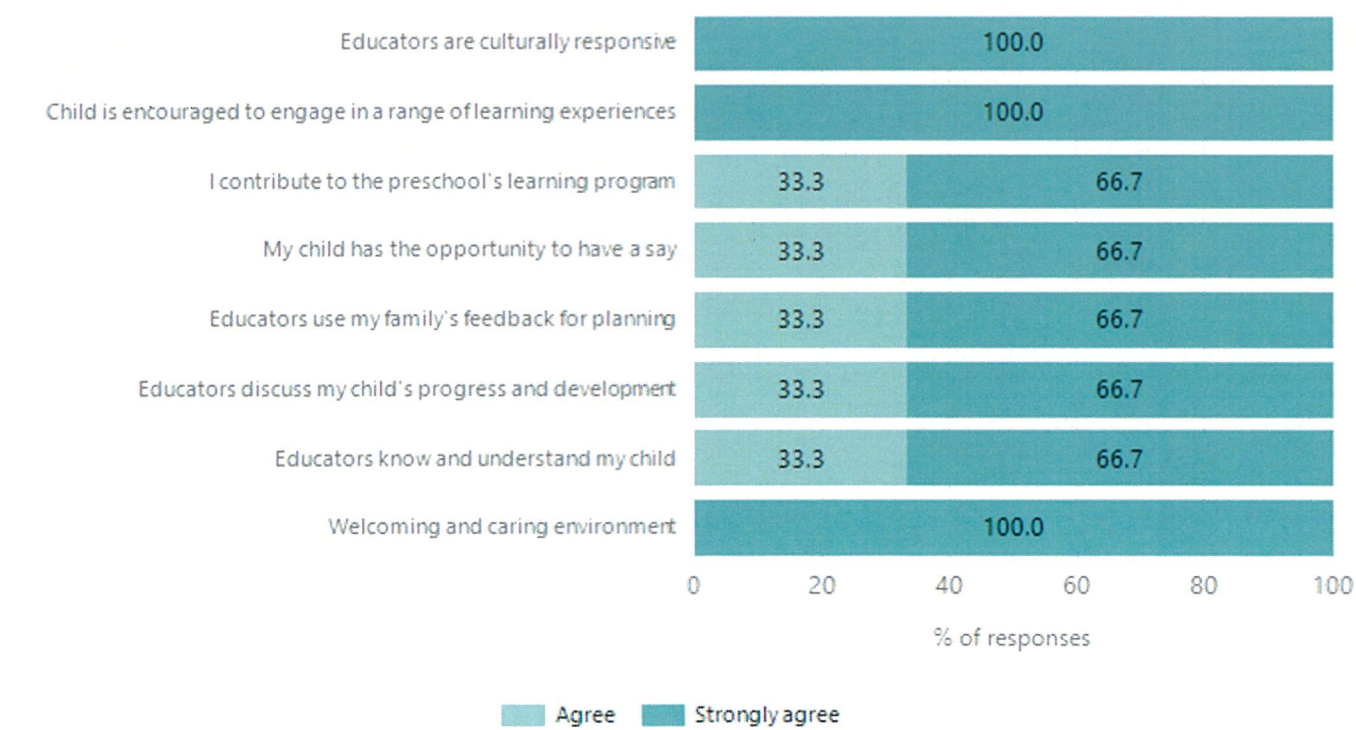
# Preschool Family Opinion Survey

## Governance, Leadership and Management



Data Source: 2024 Department for Education Preschool Family Opinions Survey, Term 3 2024.

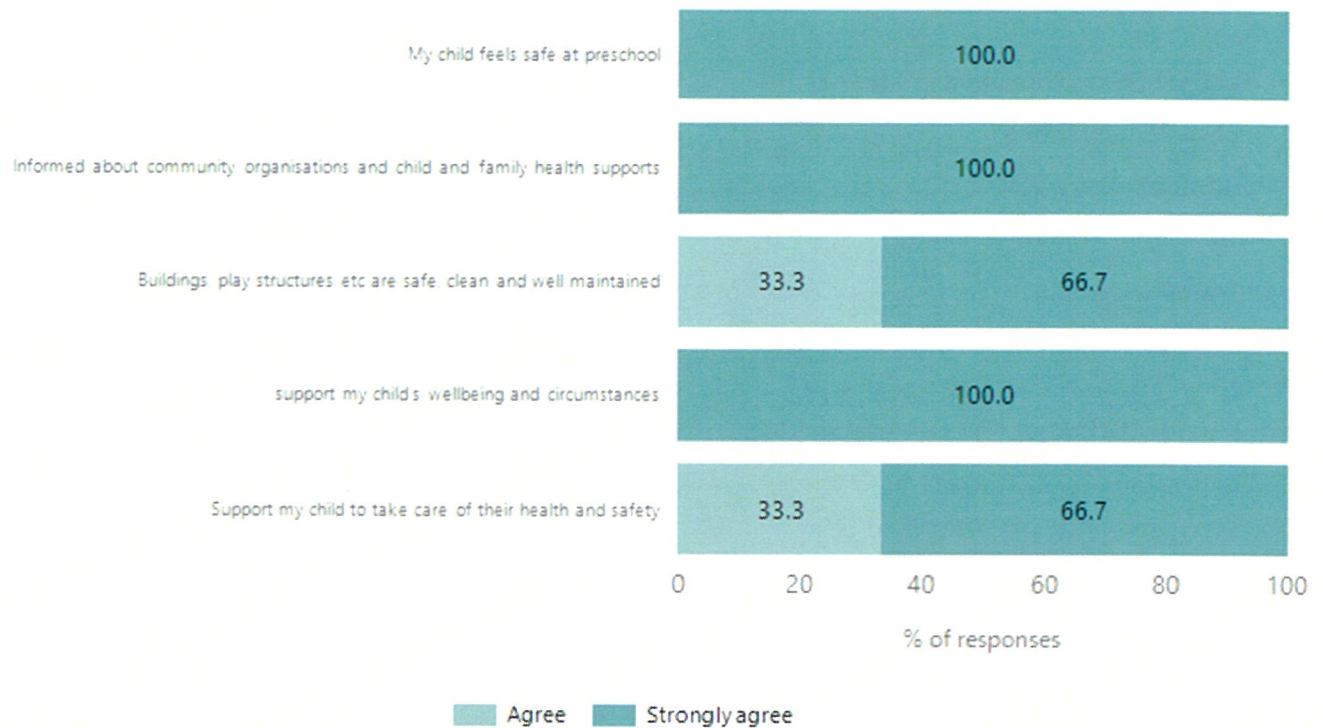
## Quality of Teaching and Learning



Data Source: 2024 Department for Education Preschool Family Opinions Survey, Term 3 2024.

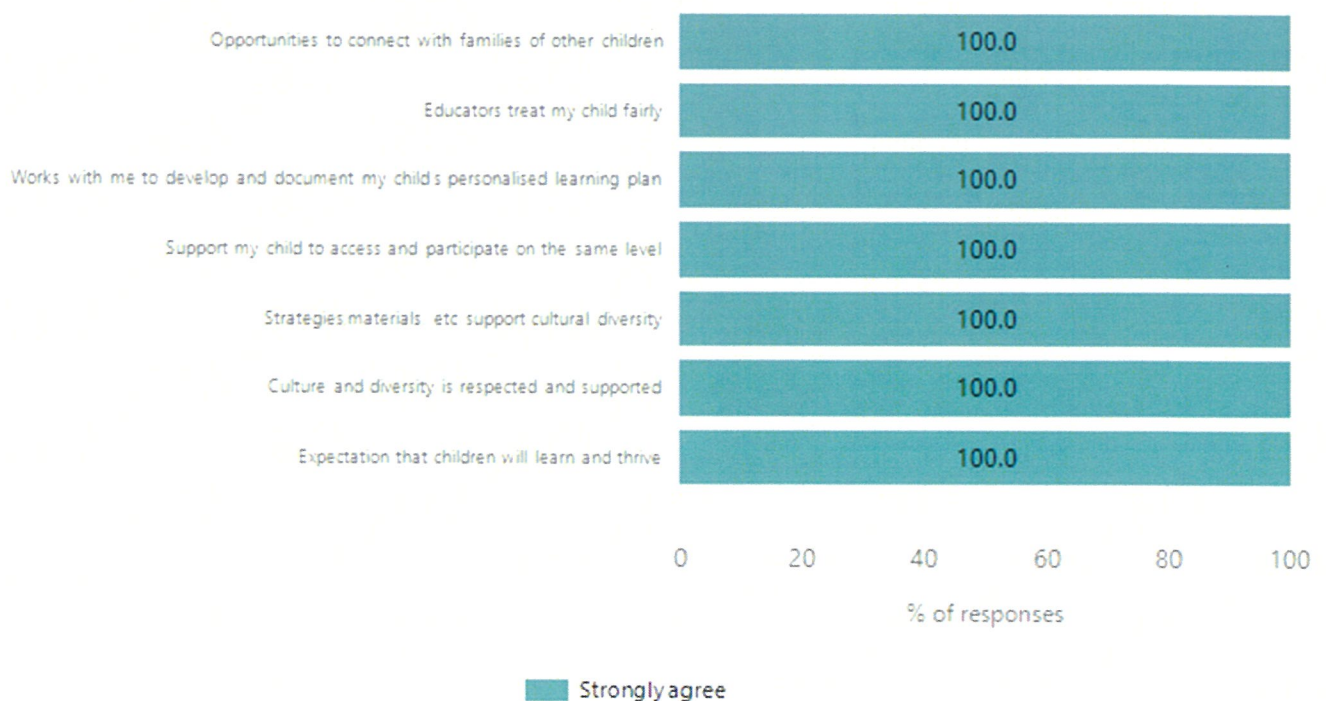


## Safety, Health and Wellbeing



Data Source: 2024 Department for Education Preschool Family Opinions Survey, Term 3 2024.

## Support and Inclusion



Data Source: 2024 Department for Education Preschool Family Opinions Survey, Term 3 2024.

# Destination Schools

Feeder Schools (Site number - Name)	2022	2023	2024
0157 - Goolwa Primary School		3.3%	
0356 - Port Elliot Primary School	87.8%	81.7%	78.4%
0453 - Victor Harbor Primary School		3.3%	
9999 - Unknown	10.2%	11.7%	17.7%

Note: The data is collected in term 3. It does not reflect actual schools enrolled in by existing preschool children. A blank cell indicates there was no data for students enrolled.

Data Source: Department for Education Destination Data Report, 2024.

# Highest Qualifications held by the teaching workforce and workforce composition

All teachers at this school are qualified and registered with the SA Teachers Registration Board.

Qualification Level	Number of Qualifications
Bachelor's degrees or Diplomas	2
Postgraduate Qualifications	2

Data Source: Data extracted from Mandatory Workforce Information Collections as on the last pay date of June 2024. As self-reported by staff in the system.

Please note: Data includes staff who are Actively employed and on extended paid leave. Please note only the highest qualification of the Teaching staff is reported. Excludes any number of other certifications earned.

## Workforce composition including indigenous staff

	Teaching Staff		Non-Teaching Staff	
	Indigenous	Non-Indigenous	Indigenous	Non-Indigenous
Full-Time Equivalents	0.0	2.8	0.0	1.0
Persons	0.0	4.0	0.0	1.0

Data Source: Data extracted from Mandatory Workforce Information Collection as on the last pay date of June 2024.

Please note: Data includes staff who are actively employed and on extended paid leave. "Indigenous category" is self-reported by staff in the system.

## Financial Statement

Funding Source	Amount
Grants: State	580,635.59
Grants: Commonwealth	-
Parent Contributions	34,352.50
Fund Raising	-
Other	-

Data Source: School supplied data.

