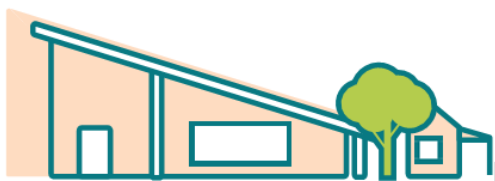


# Mount Compass Preschool



2024 annual report to the Community

## Mount Compass Preschool Centre

Mount Compass Preschool Centre number: 3661

Partnership: Fleurieu



Preschool director:



Date of endorsement:

27/03/2025



Government  
of South Australia  
Department for Education

# Context Statement

Mount Compass Preschool Centre is a small standalone site offering preschool on a part-time basis over a 5 day fortnightly cycle. The preschool also offers a community playgroup on a Friday morning run by the community on a volunteer basis. It is a rural centre located approximately 58 kilometres south of Adelaide just off the main road on the way to the coastal town of Victor Harbor.

The centre has 3 educators, a tenured Director, permanent Early Childhood Qualified Teacher and a contract Early Childhood Worker whose position is dependent on the site having over 22 enrolments. The sites internal capacity is 25 children and we offer both a start of the year and midyear intake in line with the Department for Education Preschool Enrolment Policy. This year we had 100% of our eligible school age children making the transition to Mount Compass Area School for 2025. The site participated in assessment and rating in term 2, where lots of amazing work was put in during the process. The site got a rating of Meeting for all 7 NQS areas.

Mount Compass Preschool caters for families within the Mount Compass, Nangkita, Yundi, and Mount Jagged areas. Occupations of families range from farming, local and small business to city and suburban employment. The preschool is mainly accessed by car or by foot. The town of Mt Compass enjoys a high level of community spirit and participation.

Parent and Community involvement in the Preschool is high and are actively encouraged by staff to contribute to the planning and provision of care within the educational programs. Families participate in the preschool through Governing Council, fundraising events, working bees, excursions and involvement in other educational activities and practical support.

## Governing Council Report

The Mt Compass Preschool Governing Council held its Annual General Meeting on February 20, 2024. Throughout the year, the dedicated members of the Governing Council met regularly on-site to discuss and address key matters relating to the preschool's operation.

**Engaging Educational Program:** The preschool provided a rich and engaging educational program for the children throughout the year. Highlights included valuable visits from the CFS, visits from a petting zoo and Caleb's music program. These are just a few examples of the diverse and stimulating learning opportunities provided by the preschool.

**Mid-Year Intake and Fee Structure:** With the introduction of mid-year intake, the Governing Council implemented a revised fee structure. Preschool fees will now be issued each term. This will better accommodate and support families commencing their preschool journey mid-year.

**National Quality Standards Assessment and Preschool Quality Improvement Plan:** Whilst in the acting director position, Bec Heath led the preschool to successfully navigate the National Quality Standards Assessment and Preschool Quality Improvement Plan process.

**Policy Review and Updates:** The Governing Council undertook a comprehensive review and updated a number of preschool policies. This ongoing process of policy review will continue as required.

**Building Capacity and Future Planning:** The preschool continues to manage student intake within the constraints of existing building capacity. Kylie Jarret, Director, has engaged in preliminary discussions regarding the potential for the site to transition to full-time operation. While no definitive outcome has been reached at this stage, the Governing Council remains committed to exploring options that will best serve the needs of the community including playgroup.

**Fundraising:** On November 10th, the Governing Council hosted a highly successful "Spring Spectacular" fundraising event. The funds raised will be used to purchase a new refrigerator for the preschool, a much-needed upgrade that will benefit both staff and children. The council is currently in the process of finalising the purchase. In addition to the Spring Spectacular, the Mother's Day earring sale and Father's Day sock sales further contributed to the preschool's fundraising efforts. These events not only raised valuable funds but also fostered a sense of community engagement.

As we look forward to 2025, I would like to express my sincere appreciation to all the staff at Mt Compass Preschool for their unwavering commitment and the wonderful work they do. Their passion and dedication are instrumental in providing a nurturing and enriching learning environment for our children. I would also like to thank the members of the Governing Council for their valuable contributions and support throughout the year.

## Preschool Attendance

	Term 1	Term 2	Term 3	Term 4
2021 centre	92.2%	90.8%	92.5%	90.4%
2022 centre	83.8%	79.1%	85%	83.8%
2023 centre	91.9%	89.3%	83.4%	91%
2024 centre	94.8%		73%	

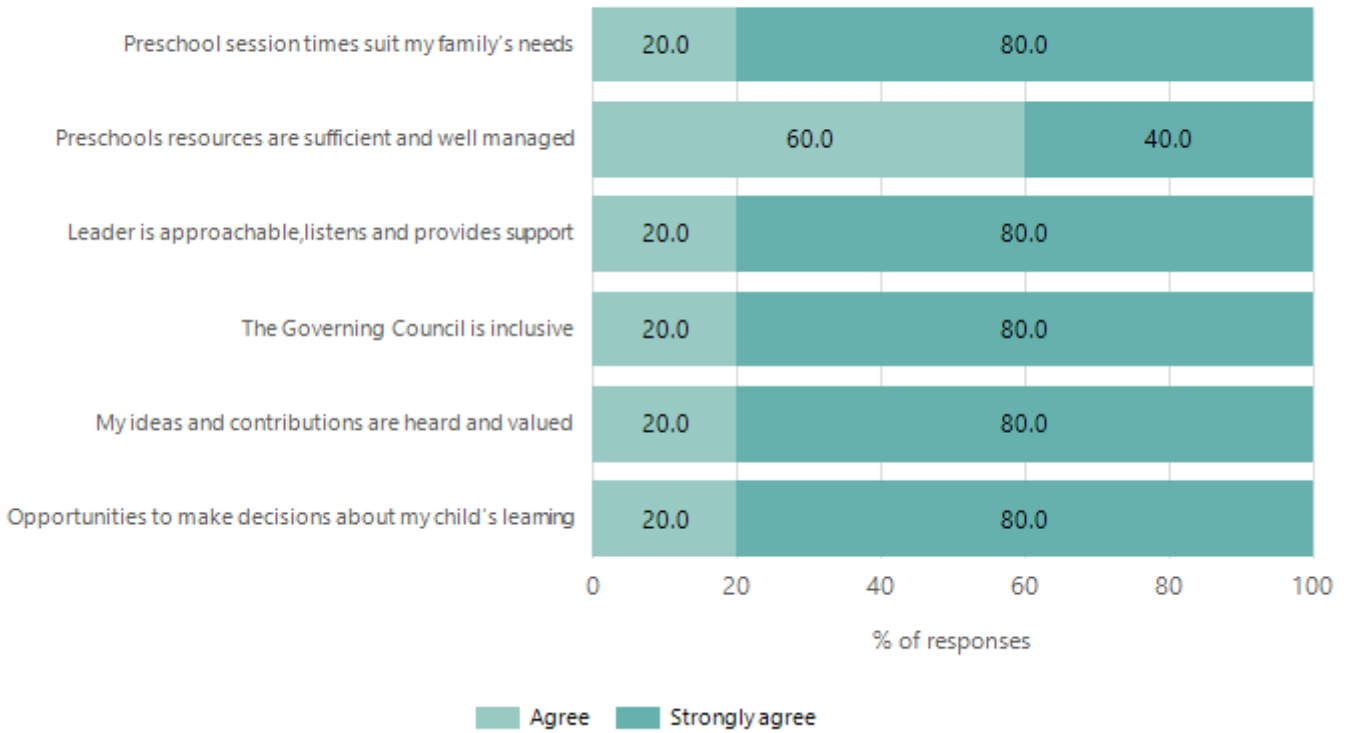
Based on attendances recorded in the two-week reference period each term. Data for eligible enrolments as described in the department's Enrolment policy. Attendance rates may differ to previous reporting with the transfer from calculations based on deemed attendance to actual attendance using booked hours divided by attended hours. Data Source: Department for Education Attendance Data, Semester 1 Report 2024. A blank cell indicates there we no students enrolled.

## Attendance Comment

In South Australia, preschool attendance is not compulsory, but it is strongly encouraged. Preschool gives children the best opportunity to develop skills, which prepare them for school. These benefits include establishing positive routines and habits, friendships and connections as well as developing communication, problem-solving and creative skills. All children are entitled to access a preschool program over 4 terms the year before they start school.

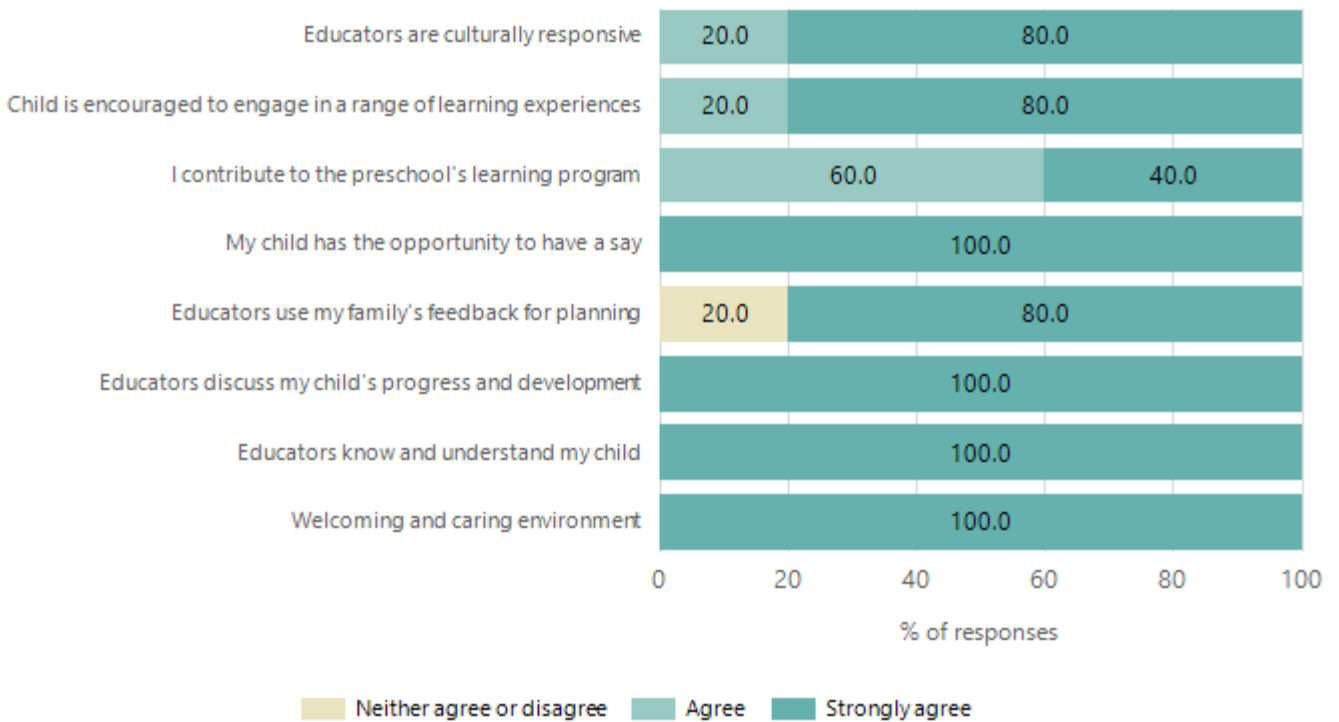
# Preschool Family Opinion Survey

## Governance, Leadership and Management



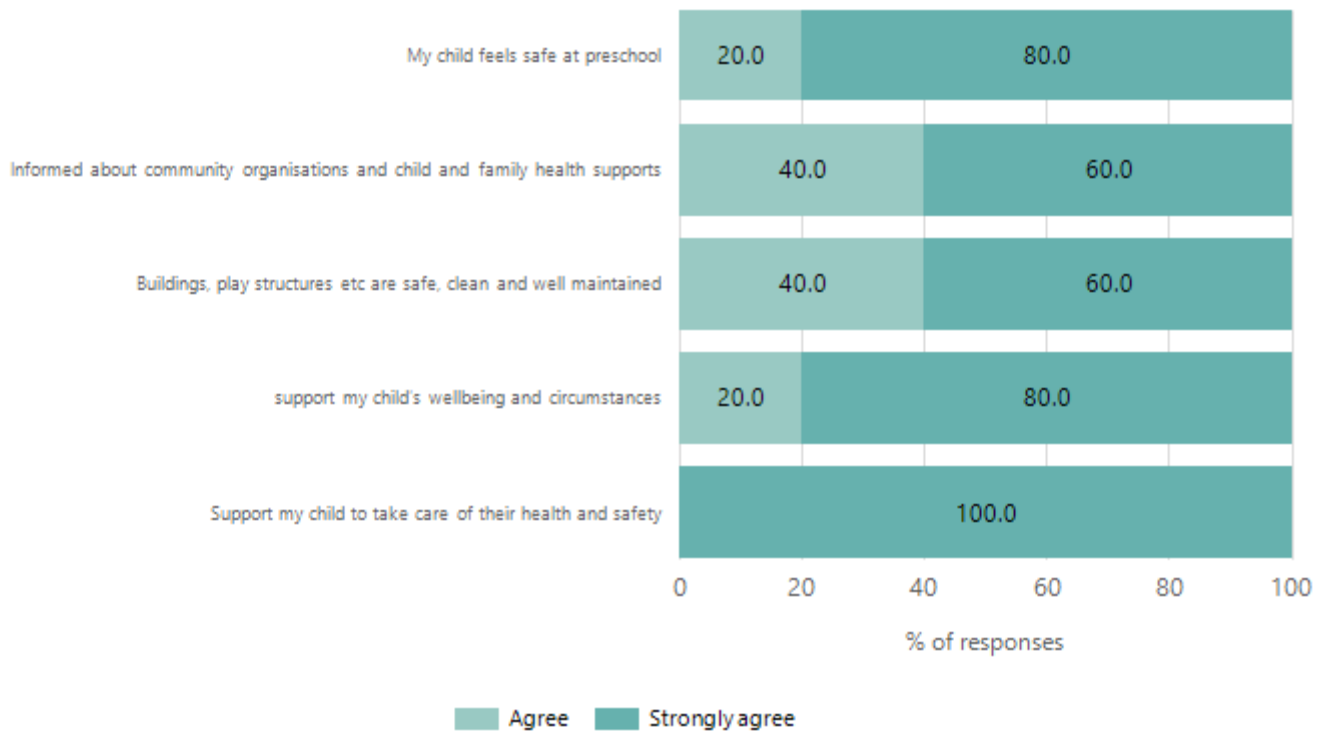
Data Source: 2024 Department for Education Preschool Family Opinions Survey, Term 3 2024.

## Quality of Teaching and Learning



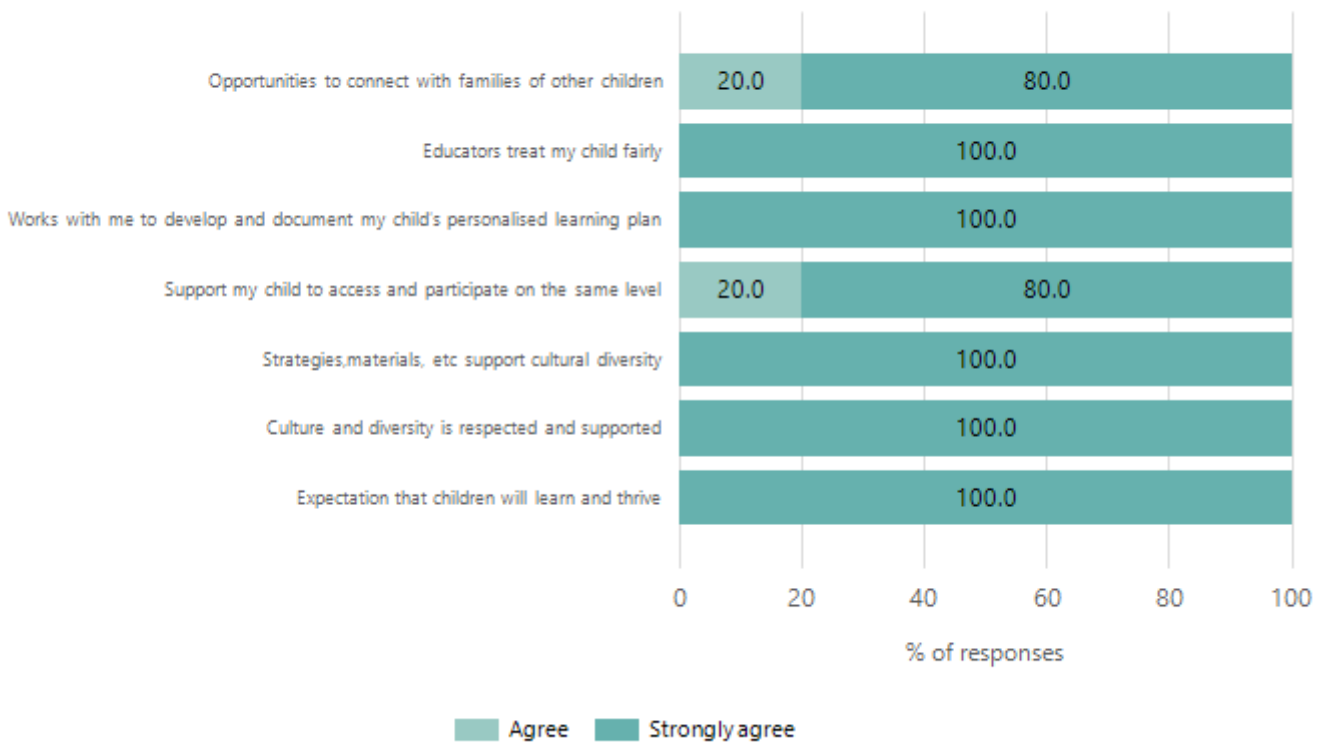
Data Source: 2024 Department for Education Preschool Family Opinions Survey, Term 3 2024.

## Safety, Health and Wellbeing



Data Source: 2024 Department for Education Preschool Family Opinions Survey, Term 3 2024.

## Support and Inclusion



Data Source: 2024 Department for Education Preschool Family Opinions Survey, Term 3 2024.

# Destination Schools

Feeder Schools (Site number - Name)	2022	2023	2024
0251 - McLaren Vale Primary School		3.2%	
0289 - Mount Compass Area School	80.8%	67.7%	37.1%
9999 - Unknown	19.2%	29.0%	60.0%

Note: The data is collected in term 3. It does not reflect actual schools enrolled in by existing preschool children. A blank cell indicates there was no data for students enrolled.

Data Source: Department for Education Destination Data Report, 2024.

## Highest Qualifications held by the teaching workforce and workforce composition

All teachers at this school are qualified and registered with the SA Teachers Registration Board.

Qualification Level	Number of Qualifications
Bachelor's degrees or Diplomas	2
Postgraduate Qualifications	1

Data Source: Data extracted from Mandatory Workforce Information Collections as on the last pay date of June 2024. As self-reported by staff in the system.

Please note: Data includes staff who are Actively employed and on extended paid leave. Please note only the highest qualification of the Teaching staff is reported. Excludes any number of other certifications earned.

### Workforce composition including indigenous staff

	Teaching Staff		Non-Teaching Staff	
	Indigenous	Non-Indigenous	Indigenous	Non-Indigenous
Full-Time Equivalents	0.0	2.1	0.0	0.6
Persons	0.0	3.0	0.0	1.0

Data Source: Data extracted from Mandatory Workforce Information Collection as on the last pay date of June 2024.

Please note: Data includes staff who are actively employed and on extended paid leave. "Indigenous category" is self-reported by staff in the system.

## Financial Statement

Funding Source	Amount
Grants: State	300,353.79
Grants: Commonwealth	
Parent Contributions	10,600
Fund Raising	718
Other	2,028

Data Source: School supplied data.