

2024 annual report to the Community

# Yankalilla Community Children's Ctr

Yankalilla Community Children's Ctr number: 3627

Partnership: Fleurieu



Preschool director:

Sarah Coventry

Date of endorsement:

05/02/2025



Government  
of South Australia  
Department for Education

# Context Statement

Information about Yankalilla Community Children's Ctr is available on the centres website, as well as the Australian Childrens Education and Care Quality Authority (ACECQA) website.

## Governing Council Report

CHAIRPERSON REPORT – 2024

Governing Councils of Yankalilla Community Children's Centre Children Centre for Early Childhood Development and Parenting.

It has been a privilege to support and guide the directions of the Yankalilla Community Children's Centre Children Centre for Early Childhood Development and Parenting, both the Child Care and Kindy sites with the support of the dedicated Governing Council Members.

2024 brought with it many changes for the site with the appointment of new Director Sarah Coventry and it was a big year for the Child Care that saw many staff changes throughout the beginning of the year, however the Centre and Staff need be to be commended on their ability to stay focused on their own personal and team goals to maintain a positive environment amongst all these challenging at time staff movements. Sarah worked tirelessly throughout the year to support the staff, and the year ended with a strong dedicated staffing group and hopefully this continues throughout 2025.

This has been supported through:

- Implementation of team meetings within staff meetings to ensure educators are effectively communicating and programming
- Implementation of leader's meetings an hour before staff meeting began has been effective in strengthening communication between Director, Assistant Director, and Team Leaders
- Educators are actively engaged in staff meetings working towards developing and strengthening the culture within the site
- Providing funding to support staff member Whitany's study to increase Diploma Qualification within in the Centre as the it was previously operating under an approved waiver.
- Jaz and Jaylee were successfully appointed Team Leader roles withing the centre and it is great to see them flourishing and the positive impacts this is having on the children and staff members.

The centre has continued to work towards their Quality Improvement Plan – goal that was decided on in 2024 which was supporting children's growth and development via self-regulation and co regulation.

Educators will engage in training around this through programs including Kimochis, Donna Berry and The Brain Academy.

Some highlights of 2024 would be supporting the staff by approving additional centre closures days to allow the Child Care to attend all centre staff training alongside the Kindy Staff these included:

- Kimochi Training and Resources purchased – this was implemented across the site inspiring educators to implement and strengthen co-regulation strategies through the children learning about their emotions and how they can respond. Staff feedback provided to the

Governing Council has been positive and supports the Centre Quality Improvement Plan, it would be great to see this supported throughout the coming years.

- Donna Berry
- The Brain Academy.

The over 2's implemented a holiday program that was highly engaging for the children and families commented on how excited their children were to come to childcare

Preschool trialled new programming styles that closely follow children's interests, which also minimised workload and deepened their reflections about children's learning.

The Centre has begun the process of implementing a new software program called OWNA to further support and improve communication between educators and families. This will be a slow implementation process to ensure educators are comfortable using the platform effectively.

New phones, iPads, and computers were purchased to support the site to operate effectively with up-to-date technology and to further support the centre sustainability goals.

In reflection of the year, in 2025, the centre will be focusing on re-establishing their connections with the community and First Nations Peoples. This is to further support children to explore their identity as Global Citizens.

In closing I would like to say a big heart felt thank you to the all the staff and fellow Governing Councils members for their support throughout 2024, the childcare industry is not always an easy space to navigate, and I wish your all the best for a prosperous and fulfilling 2025.

Jodi Buckle  
Chairperson

## Preschool Attendance

	Term 1	Term 2	Term 3	Term 4
2021 centre	90.8%	84.2%	90%	87.2%

2022 centre	85.6%	81.6%	50.3%	81.2%
2023 centre	90.2%	90.2%	88.1%	88.8%
2024 centre	87%		100.4%	

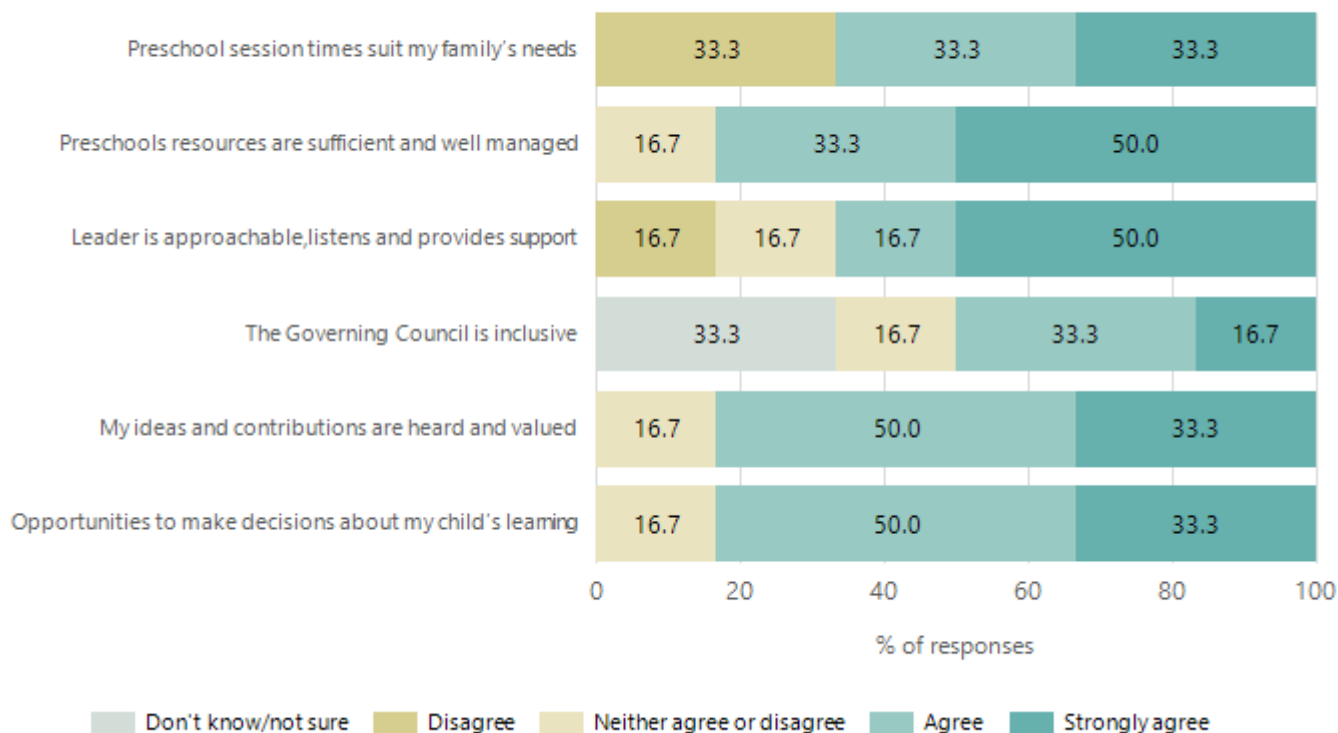
Based on attendances recorded in the two-week reference period each term. Data for eligible enrolments as described in the department's Enrolment policy. Attendance rates may differ to previous reporting with the transfer from calculations based on deemed attendance to actual attendance using booked hours divided by attended hours. Data Source: Department for Education Attendance Data, Semester 1 Report 2024. A blank cell indicates there were no students enrolled.

## Attendance Comment

In South Australia, preschool attendance is not compulsory, but it is strongly encouraged. Preschool gives children the best opportunity to develop skills, which prepare them for school. These benefits include establishing positive routines and habits, friendships and connections as well as developing communication, problem-solving and creative skills. All children are entitled to access a preschool program over 4 terms the year before they start school.

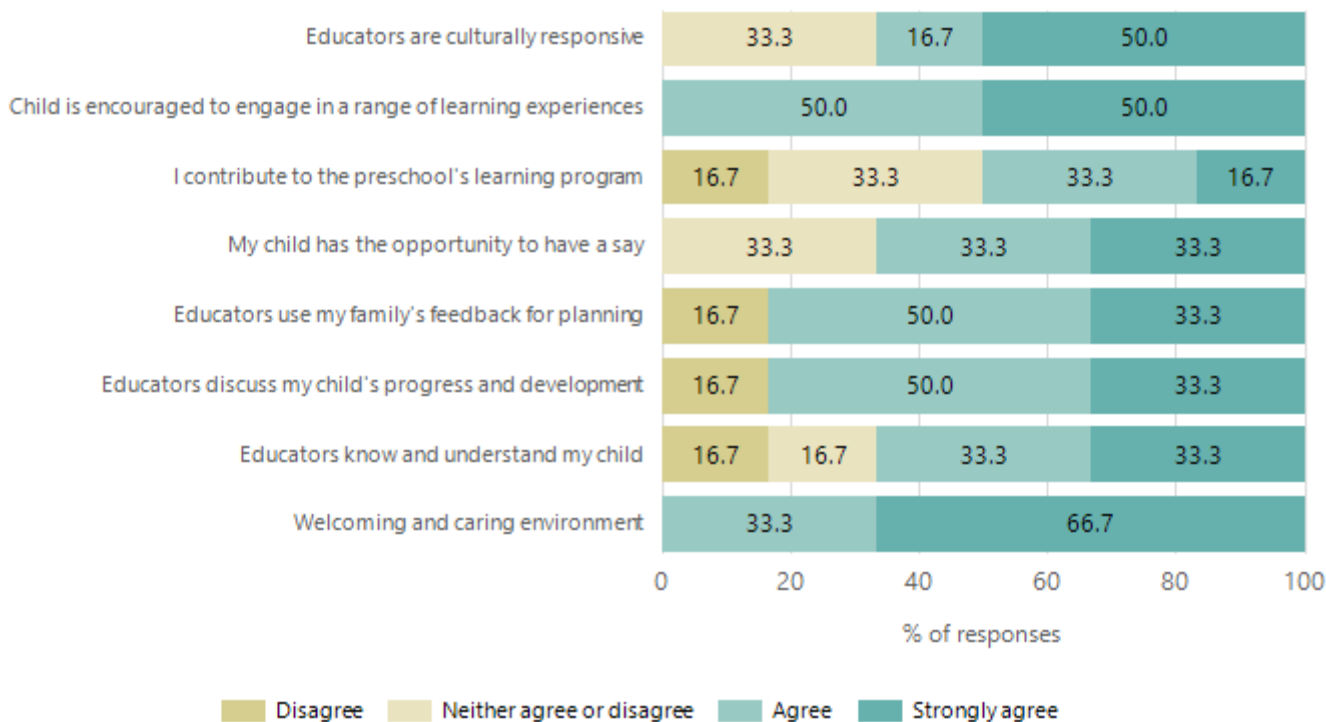
# Preschool Family Opinion Survey

## Governance, Leadership and Management



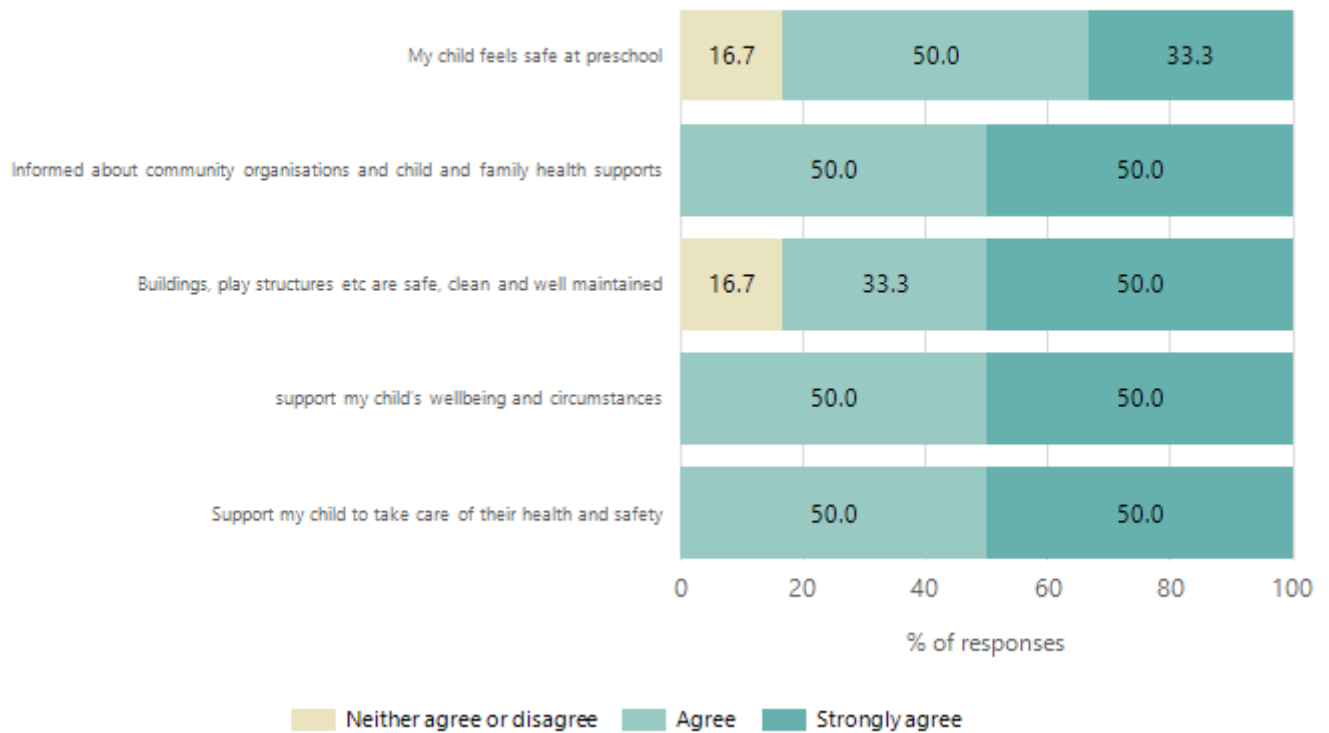
Data Source: 2024 Department for Education Preschool Family Opinions Survey, Term 3 2024.

## Quality of Teaching and Learning



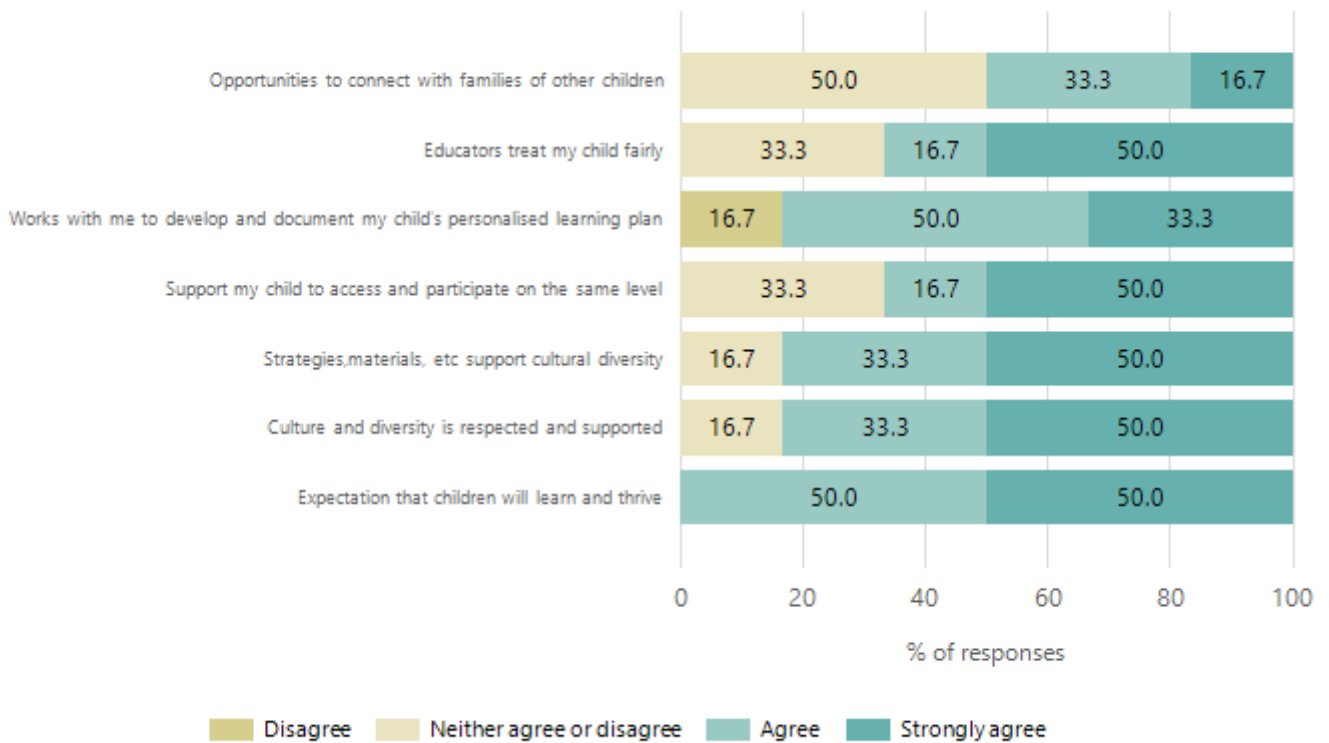
Data Source: 2024 Department for Education Preschool Family Opinions Survey, Term 3 2024.

## Safety, Health and Wellbeing



Data Source: 2024 Department for Education Preschool Family Opinions Survey, Term 3 2024.

## Support and Inclusion



Data Source: 2024 Department for Education Preschool Family Opinions Survey, Term 3 2024.

# Destination Schools

Feeder Schools (Site number - Name)	2022	2023	2024
0303 - Myponga Primary School	5.7%		7.5%
0650 - Rapid Bay Primary School	14.3%	11.9%	7.5%
0766 - Yankalilla Area School	51.4%	52.4%	57.5%
8498 - Tatachilla Lutheran College	5.7%		
9999 - Unknown	17.1%	31.0%	25.0%

Note: The data is collected in term 3. It does not reflect actual schools enrolled in by existing preschool children. A blank cell indicates there was no data for students enrolled.

Data Source: Department for Education Destination Data Report, 2024.

# Highest Qualifications held by the teaching workforce and workforce composition

All teachers at this school are qualified and registered with the SA Teachers Registration Board.

Qualification Level	Number of Qualifications
Bachelor's degrees or Diplomas	3
Postgraduate Qualifications	1

Data Source: Data extracted from Mandatory Workforce Information Collections as on the last pay date of June 2024. As self-reported by staff in the system.

Please note: Data includes staff who are Actively employed and on extended paid leave. Please note only the highest qualification of the Teaching staff is reported. Excludes any number of other certifications earned.

## Workforce composition including indigenous staff

	Teaching Staff		Non-Teaching Staff	
	Indigenous	Non-Indigenous	Indigenous	Non-Indigenous
Full-Time Equivalents	0.0	2.6	0.0	0.8
Persons	0.0	4.0	0.0	1.0

Data Source: Data extracted from Mandatory Workforce Information Collection as on the last pay date of June 2024.

Please note: Data includes staff who are actively employed and on extended paid leave. "Indigenous category" is self-reported by staff in the system.

## Financial Statement

Funding Source	Amount
Grants: State	\$0
Grants: Commonwealth	\$0
Parent Contributions	\$13,895
Fund Raising	\$0
Other	\$0

Data Source: School supplied data.