

2024 annual report to the Community

Valley View Kindergarten

Valley View Kindergarten
number: 2677
Partnership: Montague

Preschool director:

Nicole Otto

Date of endorsement:

07/04/2025



Context Statement

Information about Valley View Kindergarten is available on the centres website, as well as the Australian Childrens Education and Care Quality Authority (ACECQA) website.

Valley View Kindergarten provides a beautiful outdoor learning environment and provides enrolment for up to 77 children. We have a long tradition of ensuring all children are effective communicators. Our successful Speech and Language Program has provided intervention and support for children with severe speech and language needs for over 300 children. Investment in our Speech Commission project over the past 6 years has ensured over 500 children have participated in our 'Chat and Play,' program and the Book Based Program and associated curriculum development and implementation has ensured all children are effective communicators. We are unique as a majority of our highly experienced and qualified educators have been at Valley View Kindergarten for over 15 years.

Governing Council Report

It has been a true pleasure being part of Valley View Kindergarten in 2024. Being part of this supportive community has been incredibly rewarding. We have loved helping organise events, support improvements and seeing the children learn throughout the year. This last year, we had many successful fundraising events that have made a real difference. From the Cookie Dough Fundraiser to the Kindy Disco, the Olympic-a-thon, and Movie Night, we raised funds to enhance the Kindy experience. The Disco was a highlight, with kids dancing the night away, surrounded by bubbles and glowsticks. In celebration of the Olympics, children participated in 11 exciting events which not only encouraged physical activity but raised money for new resources including 2 dump trucks for the sandpit and challenging jigsaw puzzles. The outdoor Movie Night featuring, 'We're Going on a Bear Hunt,' and 'Bluey – The Sign,' was a highlight for children to watch in the kindy garden surrounded by giant dinosaurs to add to the magic. This event raised over \$1000. Pyjama Day was another fun event where our children wore PJ's to support children in need through Puddle Jumpers, and the Tea Towel fundraiser showcased the children's creativity in their self portraits. These events were made possible thanks to the support of our wonderful community.

The children also had enriching experiences, such as watching chicks hatch and observing the metamorphosis of Monarch butterflies. They also enjoyed a fantastic Patch Theatre performance excursion to Superluminal, which sparked creativity and imagination. 2024 also saw some exciting improvements, including new boundary fences, new soft fall around the play areas and a new sign that reads '*A Place for Everyone*,' which reflects the inclusive spirit of Valley View Kindy.

This year's learning focus continued through the wonderful book-based program that Valley View offers with engaging stories in 2024 from the Maisy series, Ron Campbell, Pamela Allen and Julia Donaldson. The children absolutely loved this program and being able to participate in the well-crafted activities at kindy or home which matched the books – like making lemonade! A lovely addition was also the *Story Champs* program, which helped children understand the structure of stories through engaging actions and techniques.

Community connections were strengthened through a working bee, a visit to St Paul's College library and the regular end of term luncheons which provided a chance for families to come together and celebrate the end of each term.

The End of Year Concert was beautiful, with the children showcasing their talents through Christmas songs and unplanned solo performances. It was a proud moment for everyone. The Governing Council want to extend their heartfelt gratitude to the staff for their dedication and support in helping the children grow and thrive. Thank you to all the families, staff and volunteers who made this year so special. We wish the Valley View Kindergarten team a fantastic 2025!

With gratitude.

Carissa Cosenza – Governing Council Chairperson

Preschool Attendance

| | Term 1 | Term 2 | Term 3 | Term 4 |
|-------------|--------|--------|--------|--------|
| 2021 centre | 89.5% | 81.4% | 90.6% | 75.8% |
| 2022 centre | 84% | 76.7% | 82.6% | 79.3% |
| 2023 centre | 87.2% | 88.4% | 85.4% | 90.5% |
| 2024 centre | 92.8% | | 88% | |

Based on attendances recorded in the two-week reference period each term. Data for eligible enrolments as described in the department's Enrolment policy. Attendance rates may differ to previous reporting with the transfer from calculations based on deemed attendance to actual attendance using booked hours divided by attended hours. Data Source: Department for Education Attendance Data, Semester 1 Report 2024. A blank cell indicates there we no students enrolled.

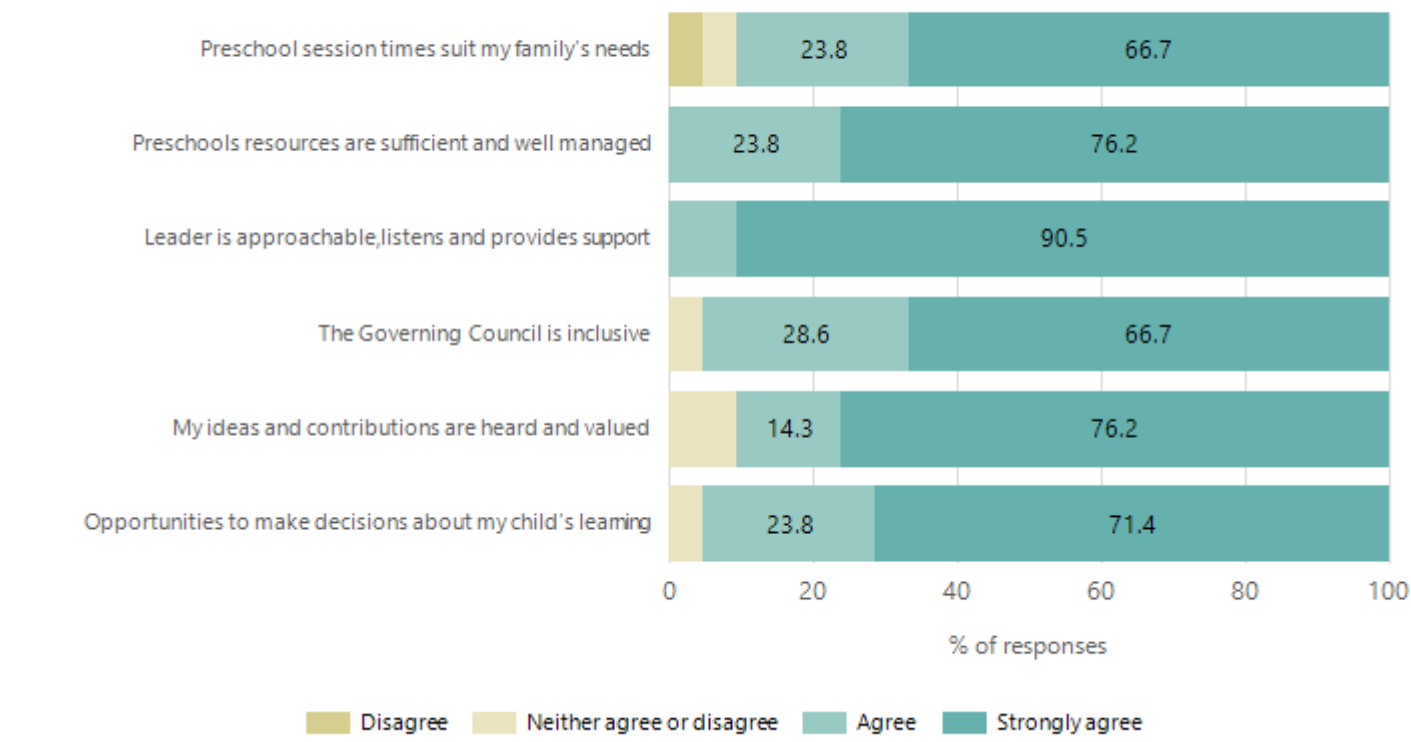
Attendance Comment

In South Australia, preschool attendance is not compulsory, but it is strongly encouraged. Preschool gives children the best opportunity to develop skills, which prepare them for school. These benefits include establishing positive routines and habits, friendships and connections as well as developing communication, problem-solving and creative skills. All children are entitled to access a preschool program over 4 terms the year before they start school.

Families really value the program at Valley View Kindergarten and because of this, attendance is high. They recognise that attendance is integral to making a strong transition to preschool and then onto school. A lot of families combine Child Care with Kindy and this is represented in our attendances on 4 Fridays each term.

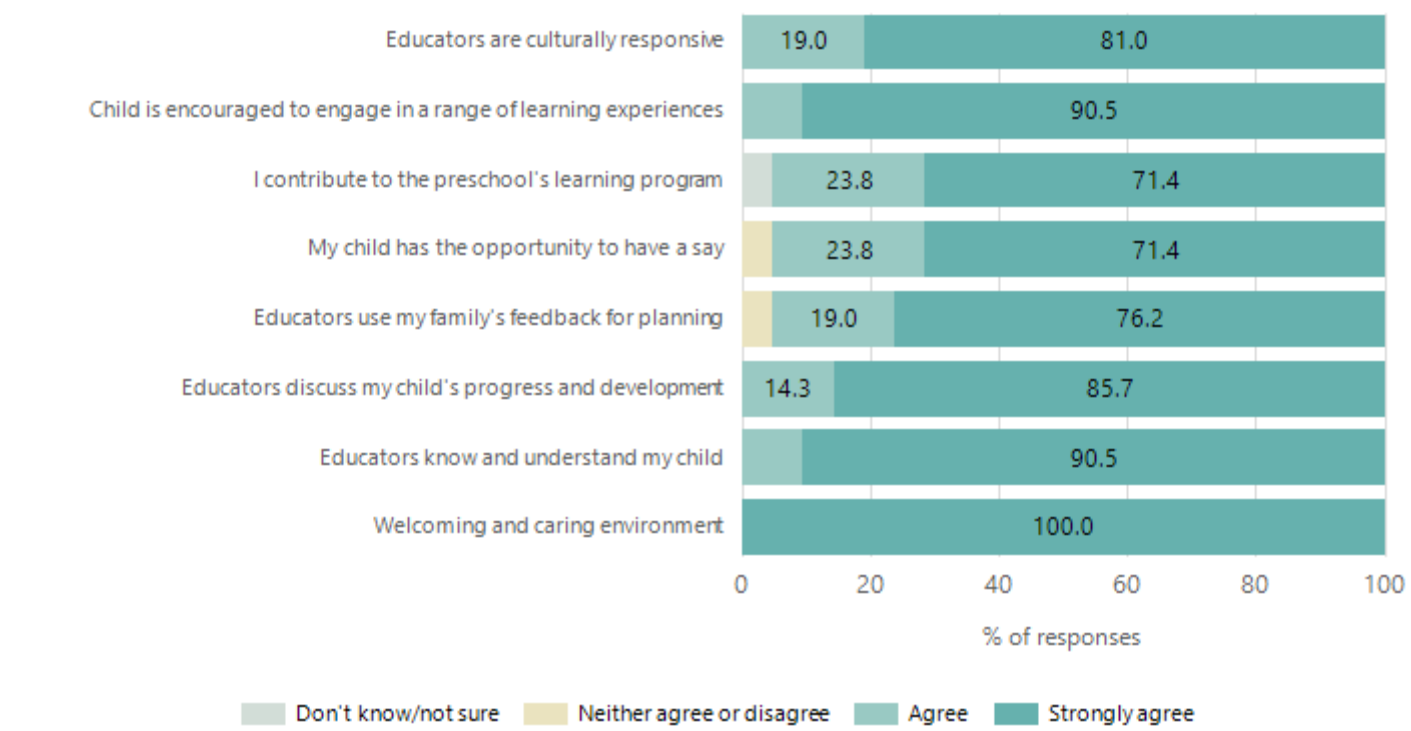
Preschool Family Opinion Survey

Governance, Leadership and Management



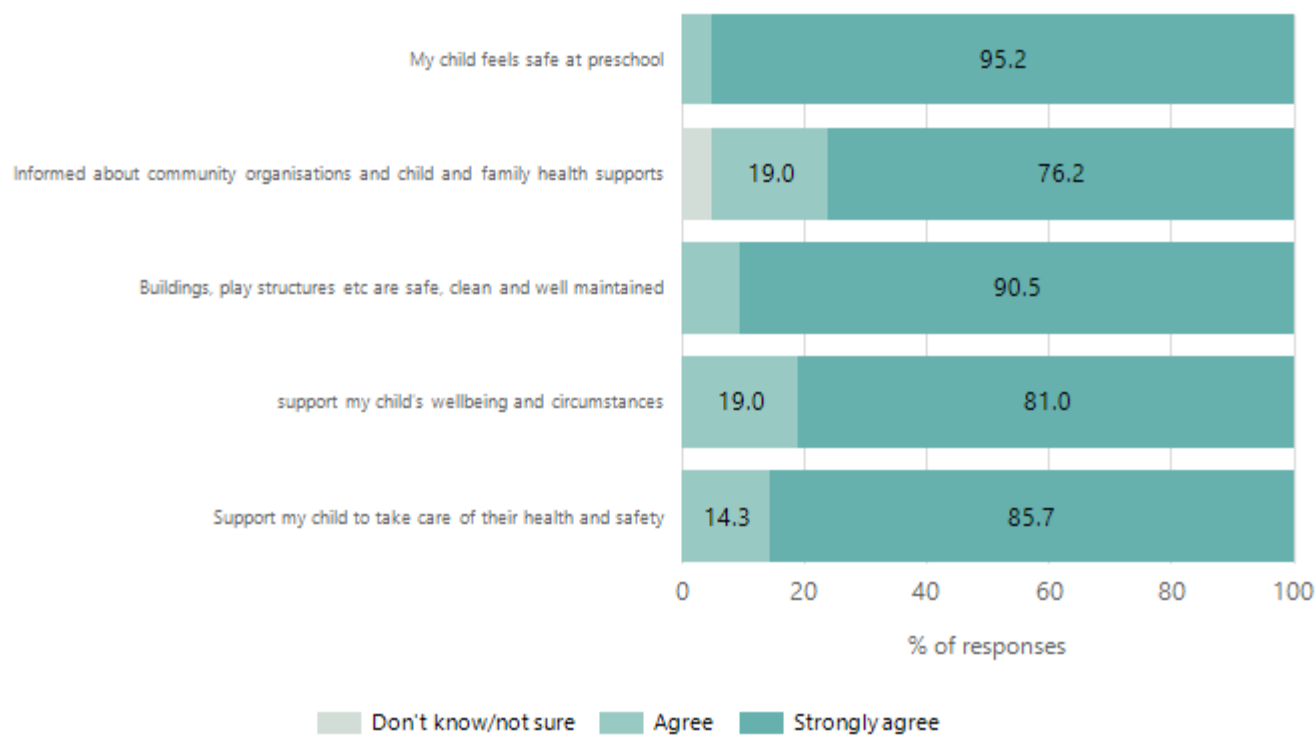
Data Source: 2024 Department for Education Preschool Family Opinions Survey, Term 3 2024.

Quality of Teaching and Learning



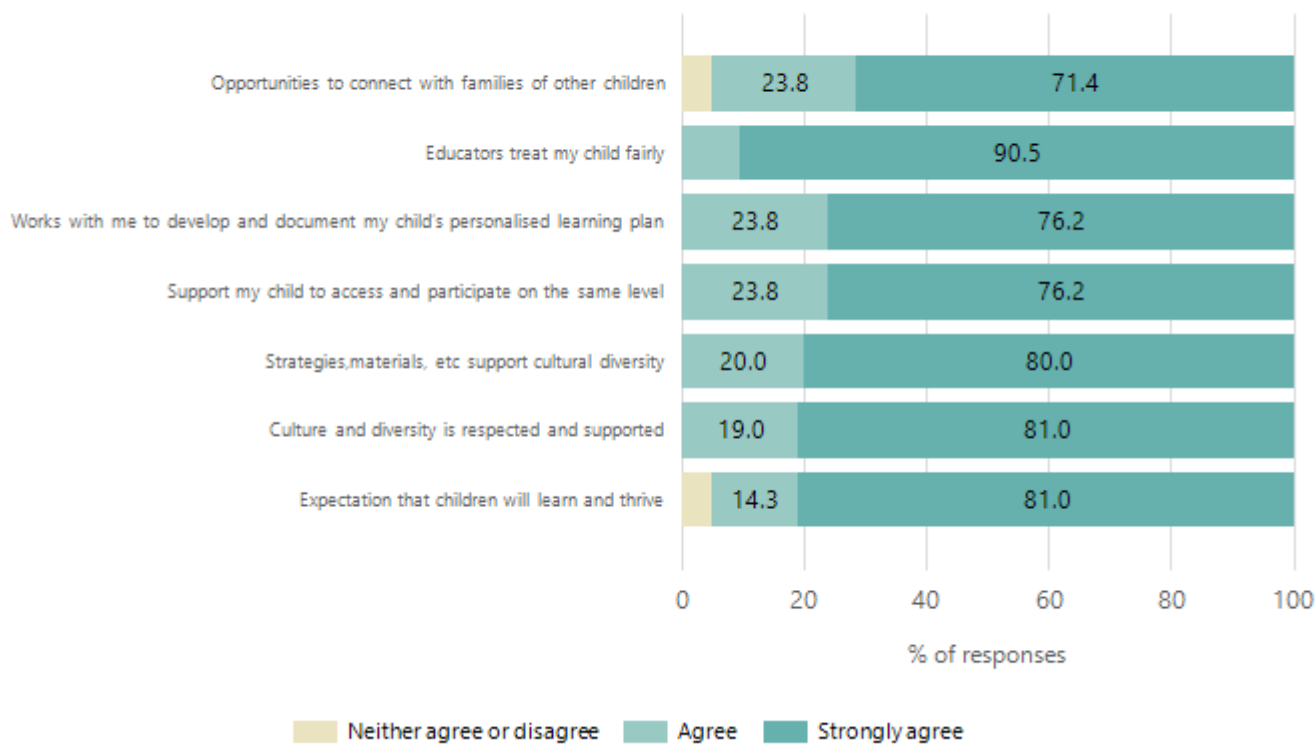
Data Source: 2024 Department for Education Preschool Family Opinions Survey, Term 3 2024.

Safety, Health and Wellbeing



Data Source: 2024 Department for Education Preschool Family Opinions Survey, Term 3 2024.

Support and Inclusion



Data Source: 2024 Department for Education Preschool Family Opinions Survey, Term 3 2024.

Destination Schools

| Feeder Schools (Site number - Name) | 2022 | 2023 | 2024 |
|--|-------|-------|-------|
| 0665 - Hillcrest Primary School | 3.6% | 3.7% | |
| 0925 - Ingle Farm East Primary School | 14.5% | 11.0% | 6.5% |
| 0982 - Dernancourt School | 4.8% | | |
| 1210 - Modbury West School | 3.6% | | |
| 8032 - Cedar College | 22.9% | 17.1% | 19.4% |
| 8364 - St Paul's College | 10.8% | 12.2% | 11.8% |
| 8411 - Torrens Valley Christian School | | 3.7% | |
| 9016 - St Gabriel's School | | | 3.2% |
| 9031 - St Martin's Catholic Primary School | 3.6% | 3.7% | |
| 9088 - St Pius X School | | | 3.2% |
| 9115 - Prescott Primary Northern | 8.4% | | |
| 9999 - Unknown | 19.3% | 28.1% | 36.6% |

Note: The data is collected in term 3. It does not reflect actual schools enrolled in by existing preschool children. A blank cell indicates there was no data for students enrolled.

Data Source: Department for Education Destination Data Report, 2024.

Highest Qualifications held by the teaching workforce and workforce composition

All teachers at this school are qualified and registered with the SA Teachers Registration Board.

| Qualification Level | Number of Qualifications |
|--------------------------------|--------------------------|
| Bachelor's degrees or Diplomas | 2 |
| Postgraduate Qualifications | 2 |

Data Source: Data extracted from Mandatory Workforce Information Collections as on the last pay date of June 2024. As self-reported by staff in the system.

Please note: Data includes staff who are Actively employed and on extended paid leave. Please note only the highest qualification of the Teaching staff is reported. Excludes any number of other certifications earned.

Workforce composition including indigenous staff

| | Teaching Staff | | Non-Teaching Staff | |
|-----------------------|----------------|----------------|--------------------|----------------|
| | Indigenous | Non-Indigenous | Indigenous | Non-Indigenous |
| Full-Time Equivalents | 0.0 | 3.6 | 0.0 | 3.4 |
| Persons | 0.0 | 4.0 | 0.0 | 5.0 |

Data Source: Data extracted from Mandatory Workforce Information Collection as on the last pay date of June 2024.

Please note: Data includes staff who are actively employed and on extended paid leave. "Indigenous category" is self-reported by staff in the system.

Financial Statement

| Funding Source | Amount |
|----------------------|--------------|
| Grants: State | \$772,022.71 |
| Grants: Commonwealth | nil |
| Parent Contributions | \$32,770.00 |
| Fund Raising | \$4,665.05 |
| Other | |

Data Source: School supplied data.