



2024 annual report to the Community

# Salisbury Heights Preschool

Salisbury Heights Preschool number: 2670

Partnership: Salisbury



Preschool director:

Donia Haidar

Date of endorsement:

01/05/2025



Government  
of South Australia  
Department for Education

# Context Statement

Information about Salisbury Heights Preschool is available on the centres website, as well as the Australian Children's Education and Care Quality Authority (ACECQA) website.

## Governing Council Report

Hello, my name is Jodie Ownsworth, Chairperson on the Salisbury heights Preschool committee of 2024, I would like to acknowledge, discuss, and extend my gratitude to all involved in the Salisbury Heights preschool Committee and staff at Salisbury Heights Preschool. I was invited to be part of the preschool Governing council meeting when my oldest Son, first commenced Kindergarten, at Salisbury Heights Preschool. Salisbury Heights Kindergarten was welcoming, warm and was very guiding with introductions, communications, and follow up of emails, regarding the governing Council. Salisbury Heights Preschool was a community, and I embraced the experienced on the governing Council. As part of a volunteer, on the governing council, - I Completed the Volunteers completed the RRHAN-EC training course. Discussing financial reports, approval of budgets, and fundraisers. Discussed fundraising events for the preschool including- Wearing Yellow fundraiser raise funds for Children's Ground. Teddy bear picnic Fundraiser KinderCare Program – afterschool hours program, Discussion with Education director Ilia Tsoutouras- communication about the preschool and discussion about Supporting of Donia H the director of Salisbury Heights preschool continuing in her director position. New Outdoor Learning Environment – Site Funded play Equipment new double swing frame and climbing cube. – the children love the new play equipment. Discussions/Communication- about Teaching / Learning /incursions /sustainability- growing Vegetables at the kindergarten /learning through play/ environmental education Sun smart policy – Salisbury Heights Kindergarten reviewed Sun smart policy requested Council members to review, seek feedback, to update policies for the sun smart policy. Last Governing council meeting was out for dinner at the Brahma Lodge Hotel, very thankful for being part of the Salisbury heights Governing Council. I felt very honoured to be part of the Committee. Salisbury Heights Preschool is a beautiful preschool, the staff are positive role models they support all the children and create a safe and nurturing environment. The Graduation was a special and memorable night that I will forever treasure, thank you for all your support and love.

Warm regards

Jodi

## Preschool Attendance

	Term 1	Term 2	Term 3	Term 4
2021 centre	89.4%	89.2%	93.4%	88.9%
2022 centre	86.6%	86.9%	83.4%	74.5%
2023 centre	93.5%	89.1%	87.5%	76.9%
2024 centre	91.1%		84.2%	

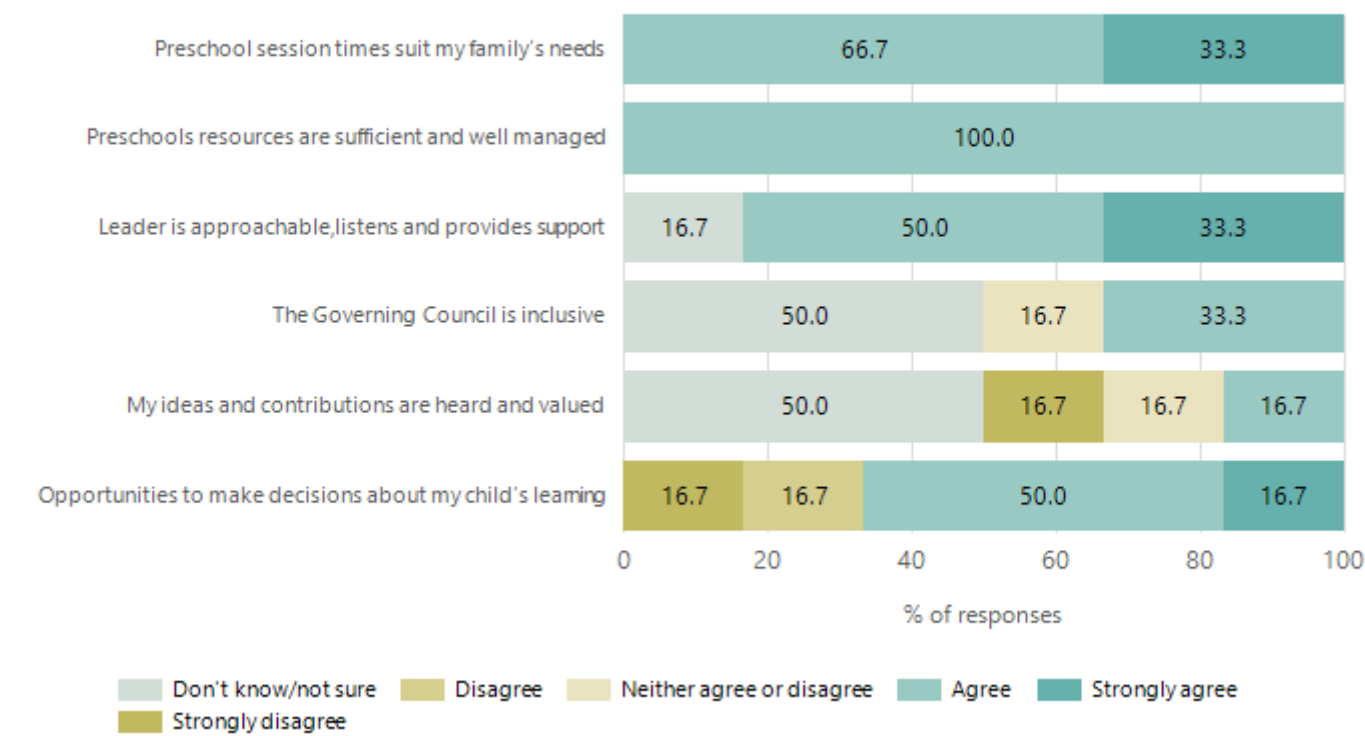
Based on attendances recorded in the two-week reference period each term. Data for eligible enrolments as described in the department's Enrolment policy. Attendance rates may differ to previous reporting with the transfer from calculations based on deemed attendance to actual attendance using booked hours divided by attended hours. Data Source: Department for Education Attendance Data, Semester 1 Report 2024. A blank cell indicates there we no students enrolled.

## Attendance Comment

In South Australia, preschool attendance is not compulsory, but it is strongly encouraged. Preschool gives children the best opportunity to develop skills, which prepare them for school. These benefits include establishing positive routines and habits, friendships and connections as well as developing communication, problem-solving and creative skills. All children are entitled to access a preschool program over 4 terms the year before they start school.

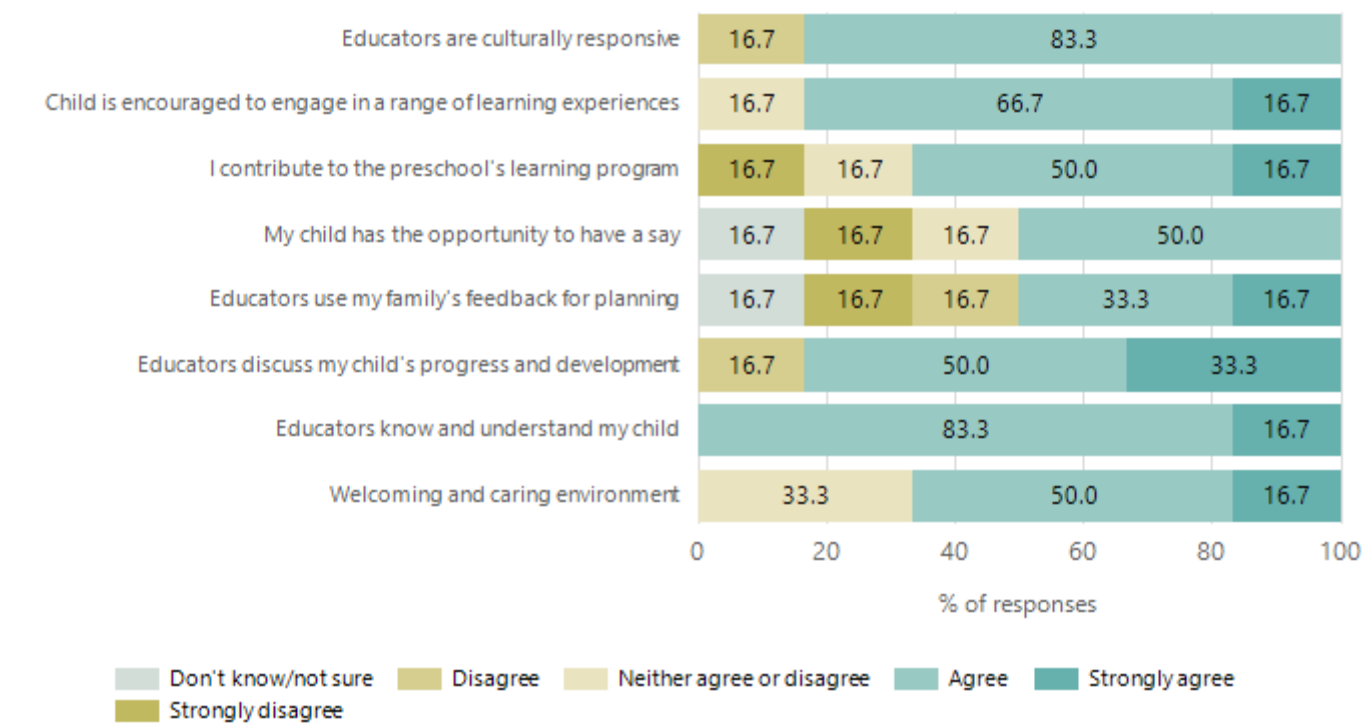
# Preschool Family Opinion Survey

## Governance, Leadership and Management



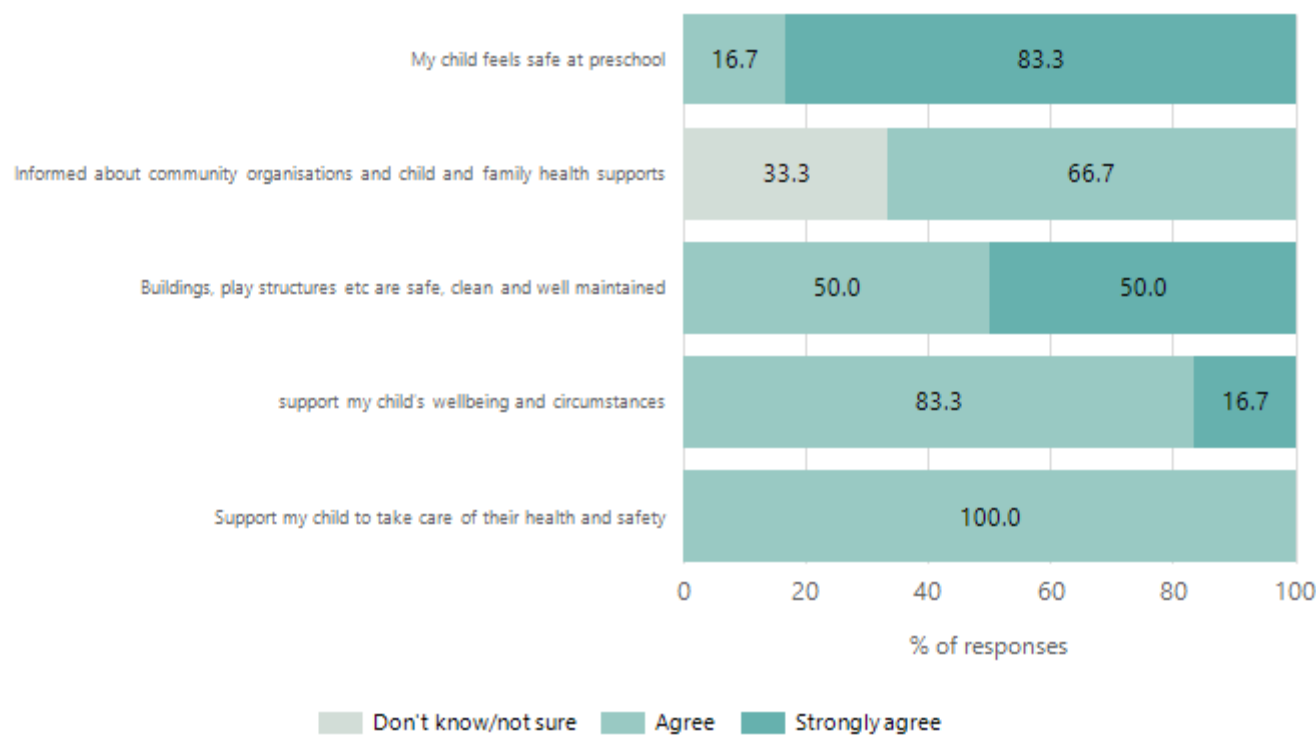
Data Source: 2024 Department for Education Preschool Family Opinions Survey, Term 3 2024.

## Quality of Teaching and Learning



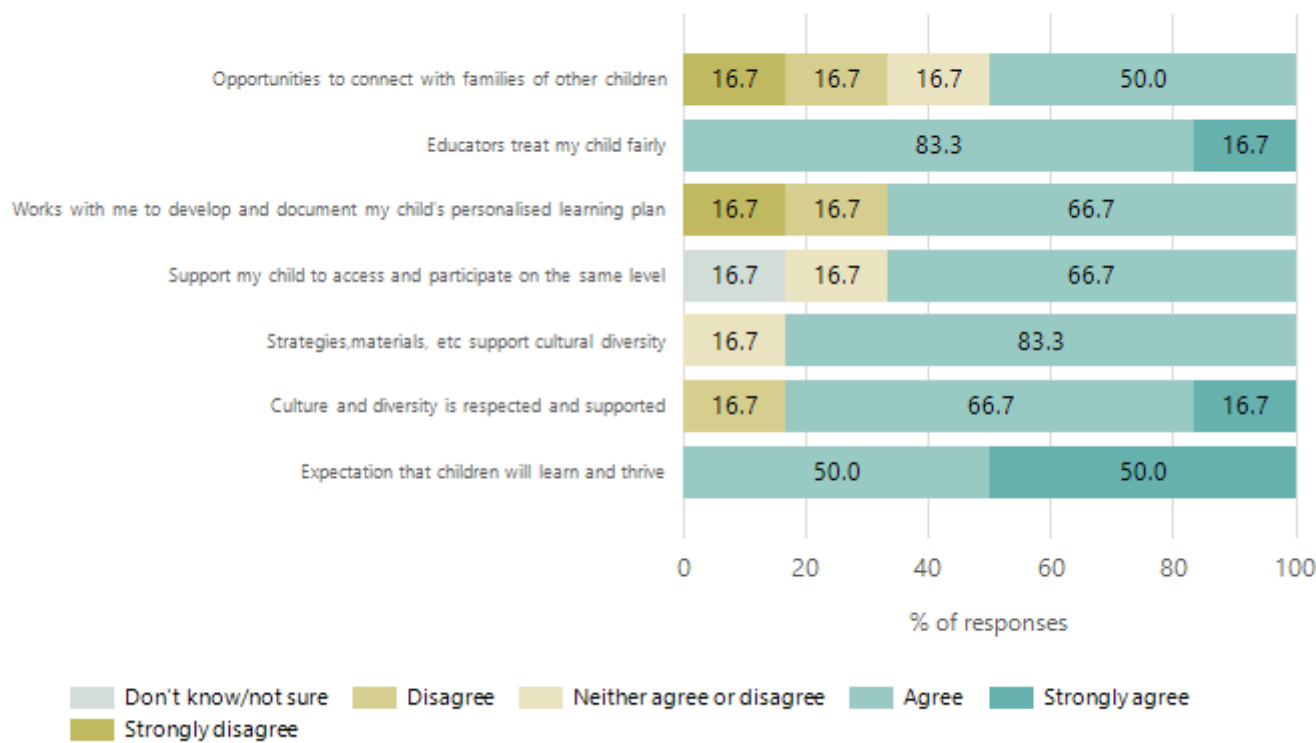
Data Source: 2024 Department for Education Preschool Family Opinions Survey, Term 3 2024.

# Safety, Health and Wellbeing



Data Source: 2024 Department for Education Preschool Family Opinions Survey, Term 3 2024.

# Support and Inclusion



Data Source: 2024 Department for Education Preschool Family Opinions Survey, Term 3 2024.

# Destination Schools

Feeder Schools (Site number - Name)	2022	2023	2024
1177 - Salisbury Heights Primary School	46.8%	58.8%	39.5%
1201 - Gulfview Heights Primary School	3.8%	5.9%	6.6%
8006 - St Francis Xavier's Regional Catholic School			4.0%
9072 - St Augustine's Parish School	6.3%		
9757 - Our Lady of Hope School	6.3%		9.2%
9999 - Unknown	26.6%	32.4%	34.2%

Note: The data is collected in term 3. It does not reflect actual schools enrolled in by existing preschool children. A blank cell indicates there was no data for students enrolled.

Data Source: Department for Education Destination Data Report, 2024.

# Highest Qualifications held by the teaching workforce and workforce composition

All teachers at this school are qualified and registered with the SA Teachers Registration Board.

Qualification Level	Number of Qualifications
Bachelor's degrees or Diplomas	2
Postgraduate Qualifications	2

Data Source: Data extracted from Mandatory Workforce Information Collections as on the last pay date of June 2024. As self-reported by staff in the system.

Please note: Data includes staff who are Actively employed and on extended paid leave. Please note only the highest qualification of the Teaching staff is reported. Excludes any number of other certifications earned.

## Workforce composition including indigenous staff

	Teaching Staff		Non-Teaching Staff	
	Indigenous	Non-Indigenous	Indigenous	Non-Indigenous
Full-Time Equivalents	0.0	3.4	0.0	1.9
Persons	0.0	4.0	0.0	2.0

Data Source: Data extracted from Mandatory Workforce Information Collection as on the last pay date of June 2024.

Please note: Data includes staff who are actively employed and on extended paid leave. "Indigenous category" is self-reported by staff in the system.

# Financial Statement

Funding Source	Amount
Grants: State	\$577,670.56
Grants: Commonwealth	n/a
Parent Contributions	\$29,111.00
Fund Raising	\$252.75
Other	\$2796.63

Data Source: School supplied data.