

2024 annual report to the Community

Salisbury Kindergarten

Salisbury Kindergarten number: 2667
Partnership: Orion



Preschool director:

Libby Jones

Signature

Date of endorsement:

12/03/2025



Context Statement

Information about Salisbury Kindergarten is available on the centres website, as well as the Australian Children’s Education and Care Quality Authority (ACECQA) website.

Governing Council Report

The 2024 Governing Council was a small group of parents who met twice per term to help make decisions and support the running of the kindergarten.

Throughout the year, Governing Council;

- Reviewed and approved the Quality Improvement Plan
- Monitored and approved the 2024 budget
- Discussed and approved kindergarten closure days
- Approved plans for the mud kitchen, dig pit and teepees.

We wish the 2025 Governing Council good luck as they continue with this project and support the kindergarten in providing opportunities for the children.

Preschool Attendance

	Term 1	Term 2	Term 3	Term 4
2021 centre		86.1%	84.2%	79.5%
2022 centre	90.6%	86.7%	81.2%	83.3%
2023 centre	69.3%	84%	83.1%	76.5%
2024 centre	85%		77.4%	

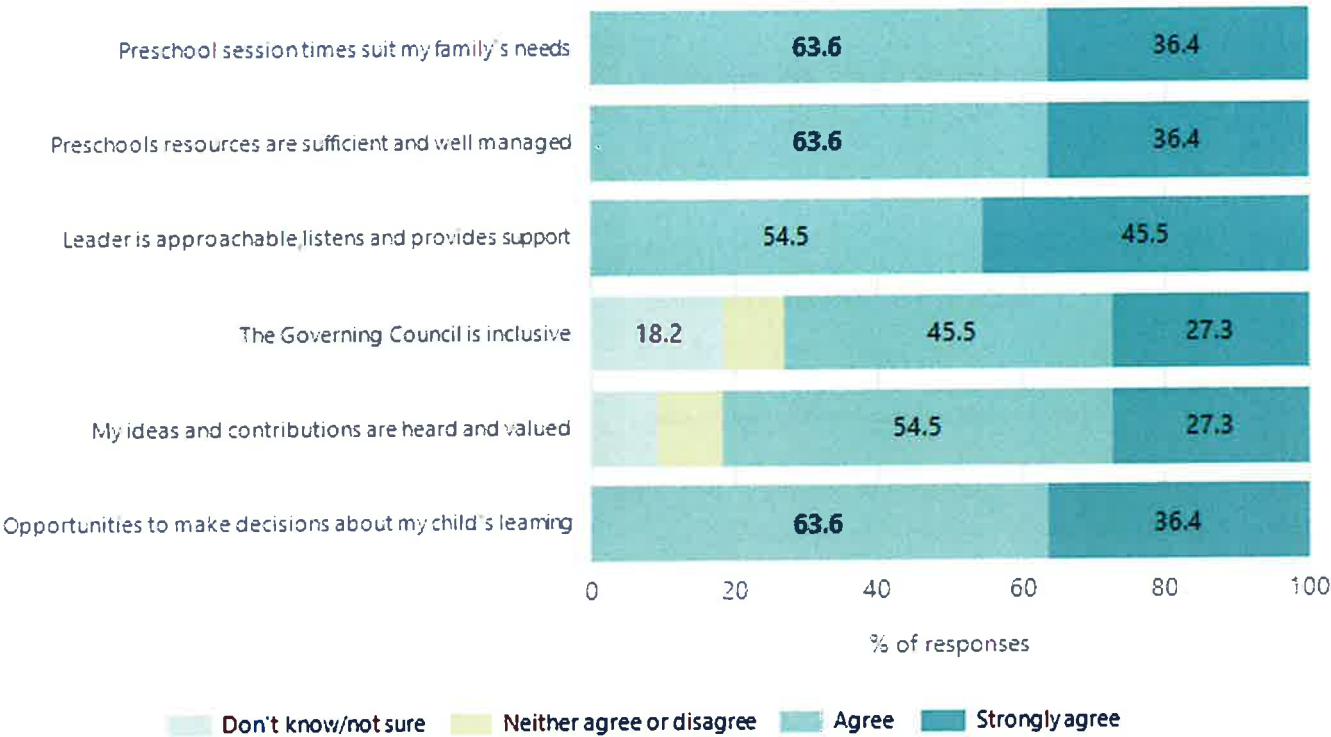
Based on attendances recorded in the two-week reference period each term. Data for eligible enrolments as described in the department's Enrolment policy. Attendance rates may differ to previous reporting with the transfer from calculations based on deemed attendance to actual attendance using booked hours divided by attended hours. Data Source: Department for Education Attendance Data, Semester 1 Report 2024. A blank cell indicates there we no students enrolled.

Attendance Comment

In South Australia, preschool attendance is not compulsory, but it is strongly encouraged. Preschool gives children the best opportunity to develop skills, which prepare them for school. These benefits include establishing positive routines and habits, friendships and connections as well as developing communication, problem-solving and creative skills. All children are entitled to access a preschool program over 4 terms the year before they start school.

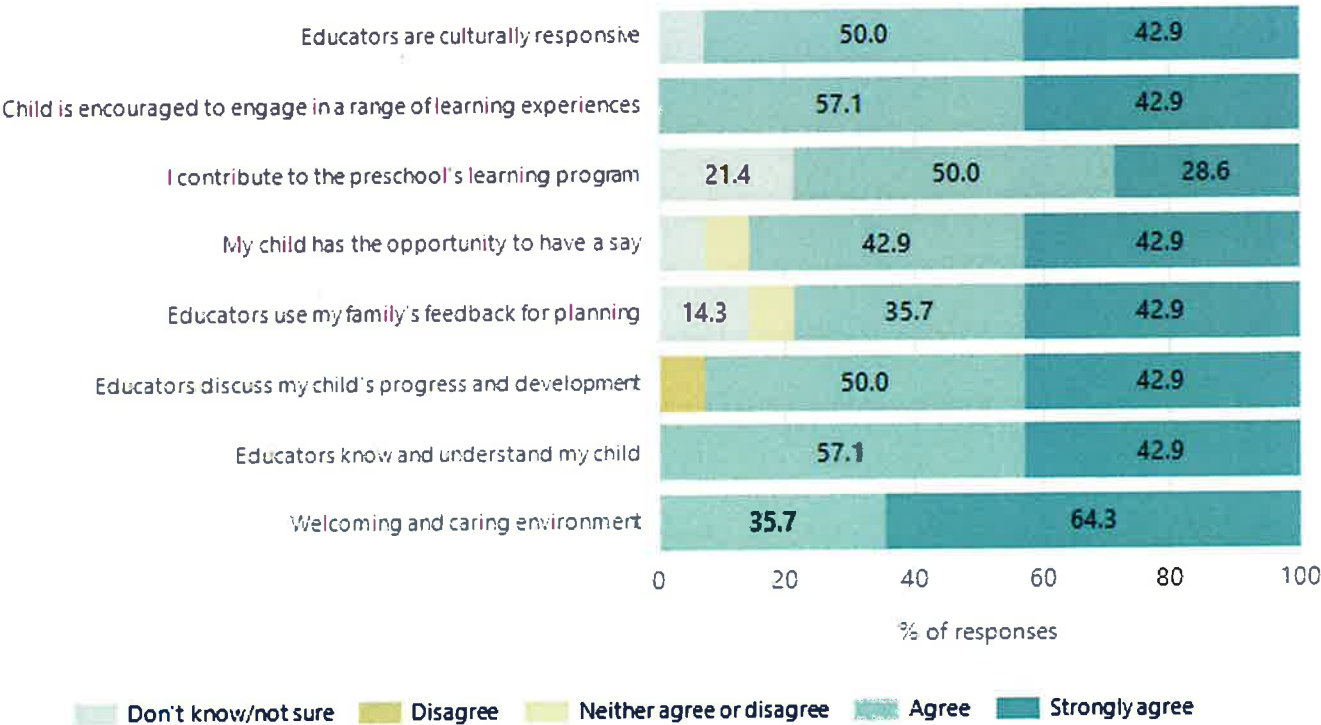
Preschool Family Opinion Survey

Governance, Leadership and Management



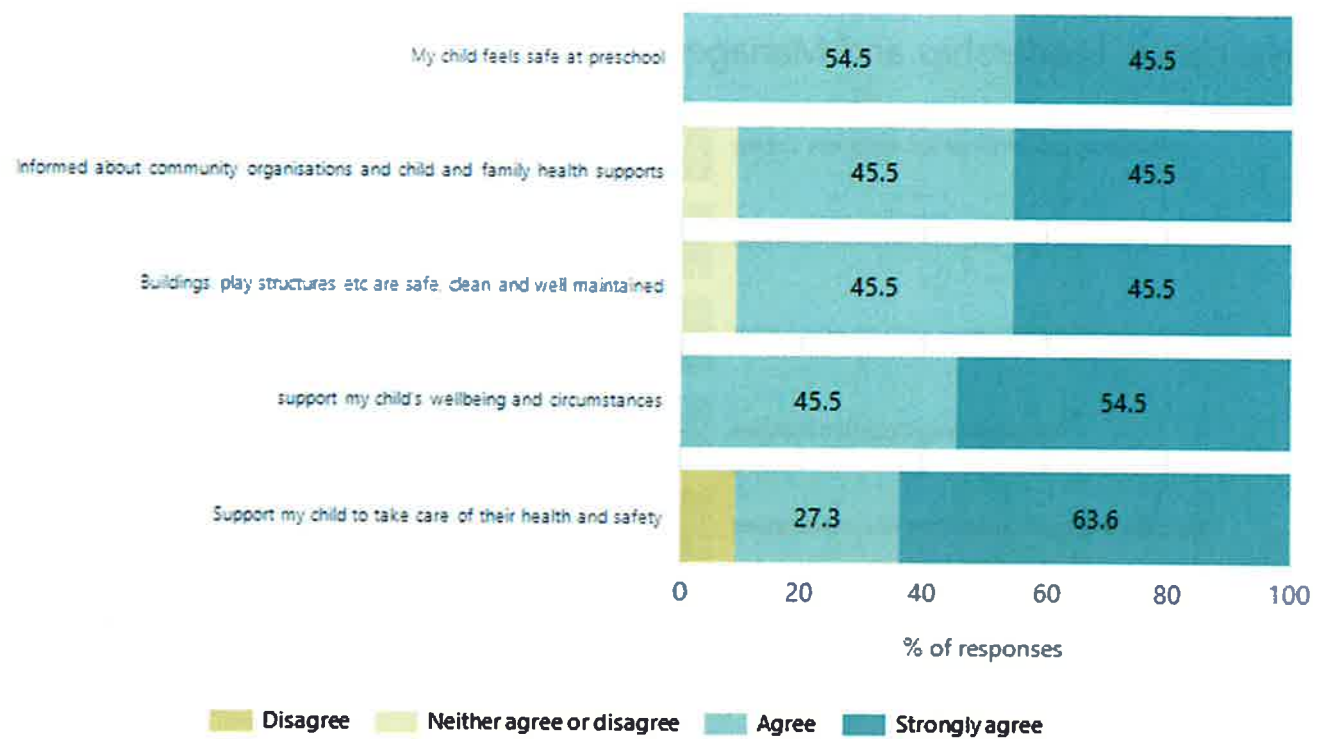
Data Source: 2024 Department for Education Preschool Family Opinions Survey, Term 3 2024.

Quality of Teaching and Learning



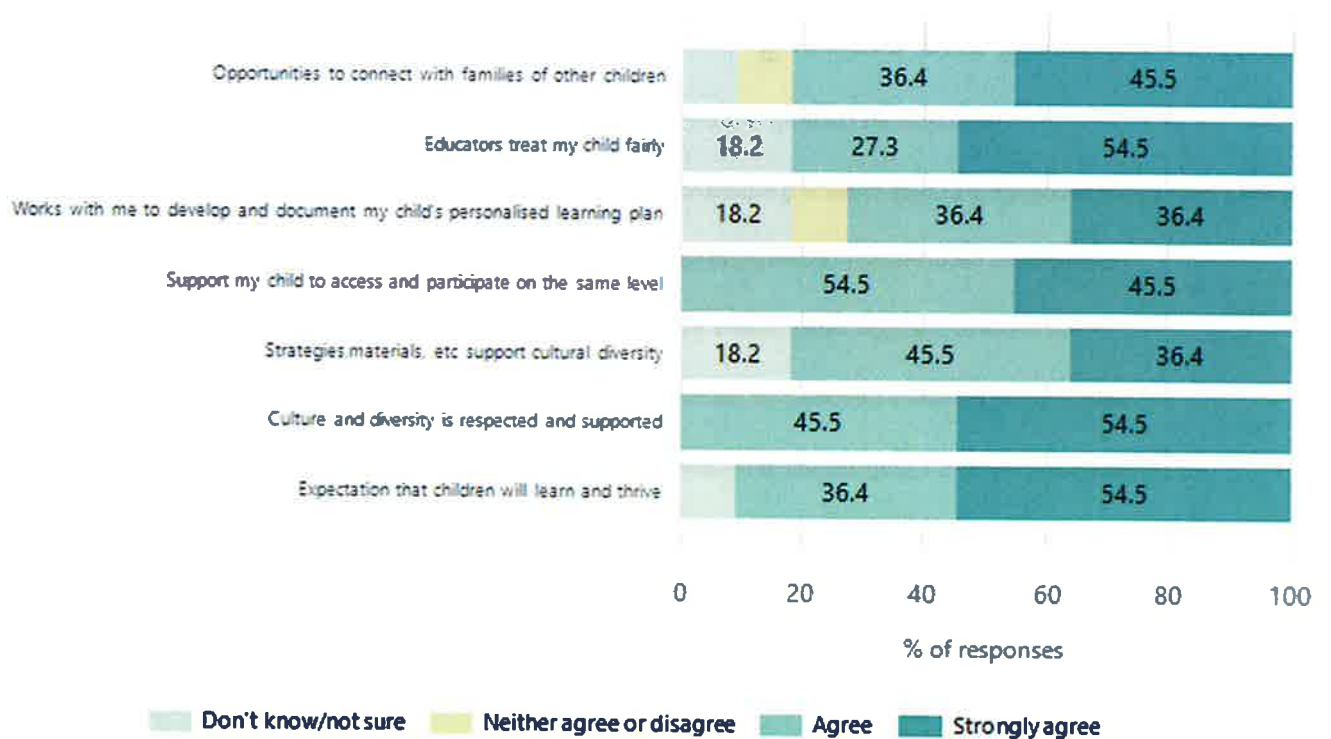
Data Source: 2024 Department for Education Preschool Family Opinions Survey, Term 3 2024.

Safety, Health and Wellbeing



Data Source: 2024 Department for Education Preschool Family Opinions Survey, Term 3 2024.

Support and Inclusion



Data Source: 2024 Department for Education Preschool Family Opinions Survey, Term 3 2024.

Destination Schools

Feeder Schools (Site number - Name)	2022	2023	2024
0983 - Brahma Lodge Primary School			5.3%
8423 - Hope Christian College		4.6%	
9072 - St Augustine's Parish School	20.0%	16.7%	24.0%
9164 - Playford College	6.7%	10.6%	4.0%
9999 - Unknown	68.3%	63.6%	52.0%

Note: The data is collected in term 3. It does not reflect actual schools enrolled in by existing preschool children. A blank cell indicates there was no data for students enrolled.

Data Source: Department for Education Destination Data Report, 2024.

Highest Qualifications held by the teaching workforce and workforce composition

All teachers at this school are qualified and registered with the SA Teachers Registration Board.

Qualification Level	Number of Qualifications
Bachelor's degrees or Diplomas	2
Postgraduate Qualifications	1

Data Source: Data extracted from Mandatory Workforce Information Collections as on the last pay date of June 2024. As self-reported by staff in the system.

Please note: Data includes staff who are Actively employed and on extended paid leave. Please note only the highest qualification of the Teaching staff is reported. Excludes any number of other certifications earned.

Workforce composition including indigenous staff

	Teaching Staff		Non-Teaching Staff	
	Indigenous	Non-Indigenous	Indigenous	Non-Indigenous
Full-Time Equivalents	0.0	2.2	0.0	0.9
Persons	0.0	3.0	0.0	1.0

Data Source: Data extracted from Mandatory Workforce Information Collection as on the last pay date of June 2024.

Please note: Data includes staff who are actively employed and on extended paid leave. "Indigenous category" is self-reported by staff in the system.

Financial Statement

Funding Source	Amount
Grants: State	\$514,252.59
Grants: Commonwealth	
Parent Contributions	\$21,945.00
Fund Raising	
Other	\$8,441.48

Data Source: School supplied data.