

2024 annual report to the Community

# Angle Vale Preschool

Angle Vale Preschool number: 2627

Partnership: Peachey



Preschool director:

Renee Tonani

Date of endorsement:

03/02/2025



Government  
of South Australia  
Department for Education

# Context Statement

Information about Angle Vale Preschool is available on the centres website, as well as the Australian Childrens Education and Care Quality Authority (ACECQA) website.

## Governing Council Report

2024 was a wonderful year at Angle Vale Preschool.

This year, the Governing Council has played a crucial role in supporting the preschool amidst growing enrolment pressures in the Angle Vale area. Through successful fundraising events like the Mudathon, Christmas market, and cookie dough fundraiser, we were able to raise funds for important site improvements and curriculum resources. These included the installation of a new verandah, slide replacement, and the addition of new epoxy flooring, enhancing the preschool environment. The dedicated and consistent efforts of our staff and Governing Council enabled us to meet regularly, discuss the preschool’s needs, and make informed decisions that benefit the entire Angle Vale community.



## Preschool Attendance

	Term 1	Term 2	Term 3	Term 4
2021 centre	88.7%	88.5%	91.4%	91.3%
2022 centre	93.4%	84.5%	87.7%	90.8%
2023 centre	91%	89.9%	87.8%	88.3%
2024 centre	88.6%		87.6%	

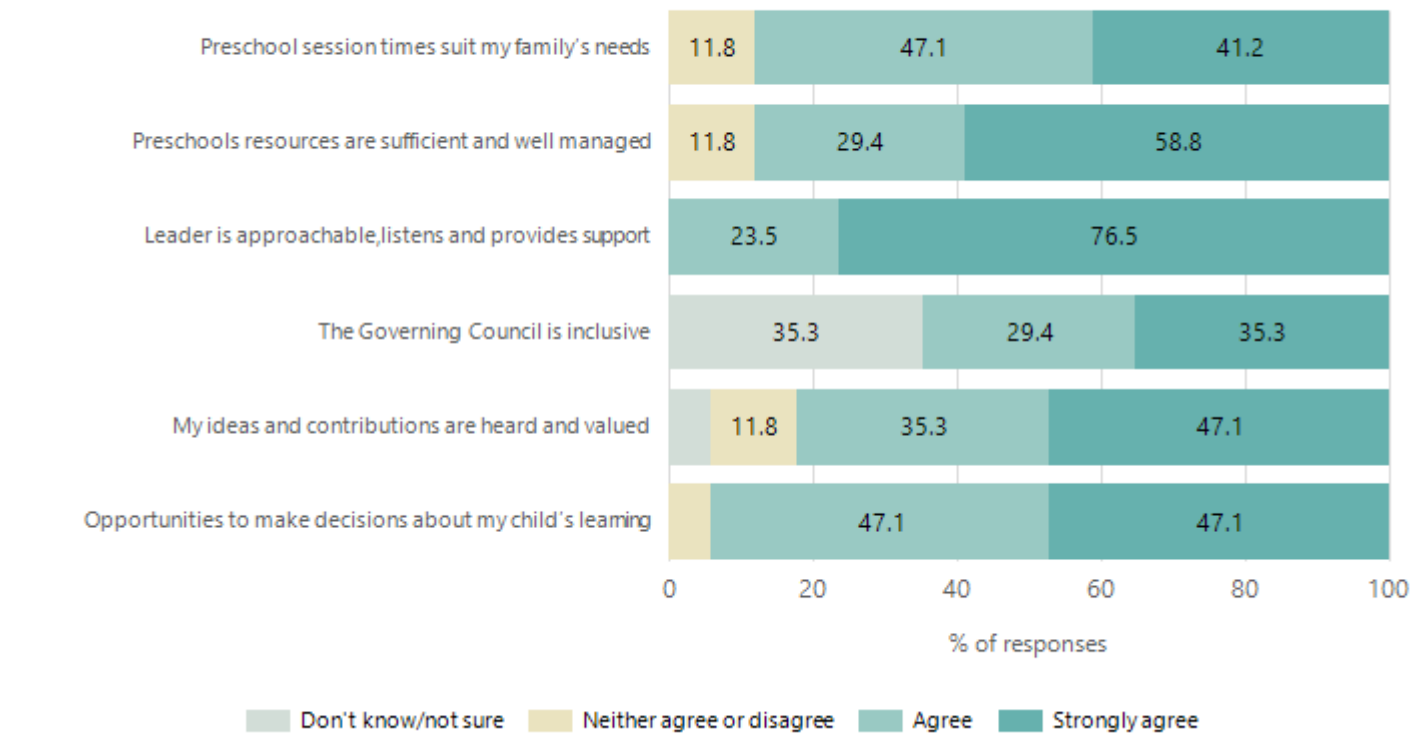
Based on attendances recorded in the two-week reference period each term. Data for eligible enrolments as described in the department's Enrolment policy. Attendance rates may differ to previous reporting with the transfer from calculations based on deemed attendance to actual attendance using booked hours divided by attended hours. Data Source: Department for Education Attendance Data, Semester 1 Report 2024. A blank cell indicates there we no students enrolled.

## Attendance Comment

In South Australia, preschool attendance is not compulsory, but it is strongly encouraged. Preschool gives children the best opportunity to develop skills, which prepare them for school. These benefits include establishing positive routines and habits, friendships and connections as well as developing communication, problem-solving and creative skills. All children are entitled to access a preschool program over 4 terms the year before they start school.

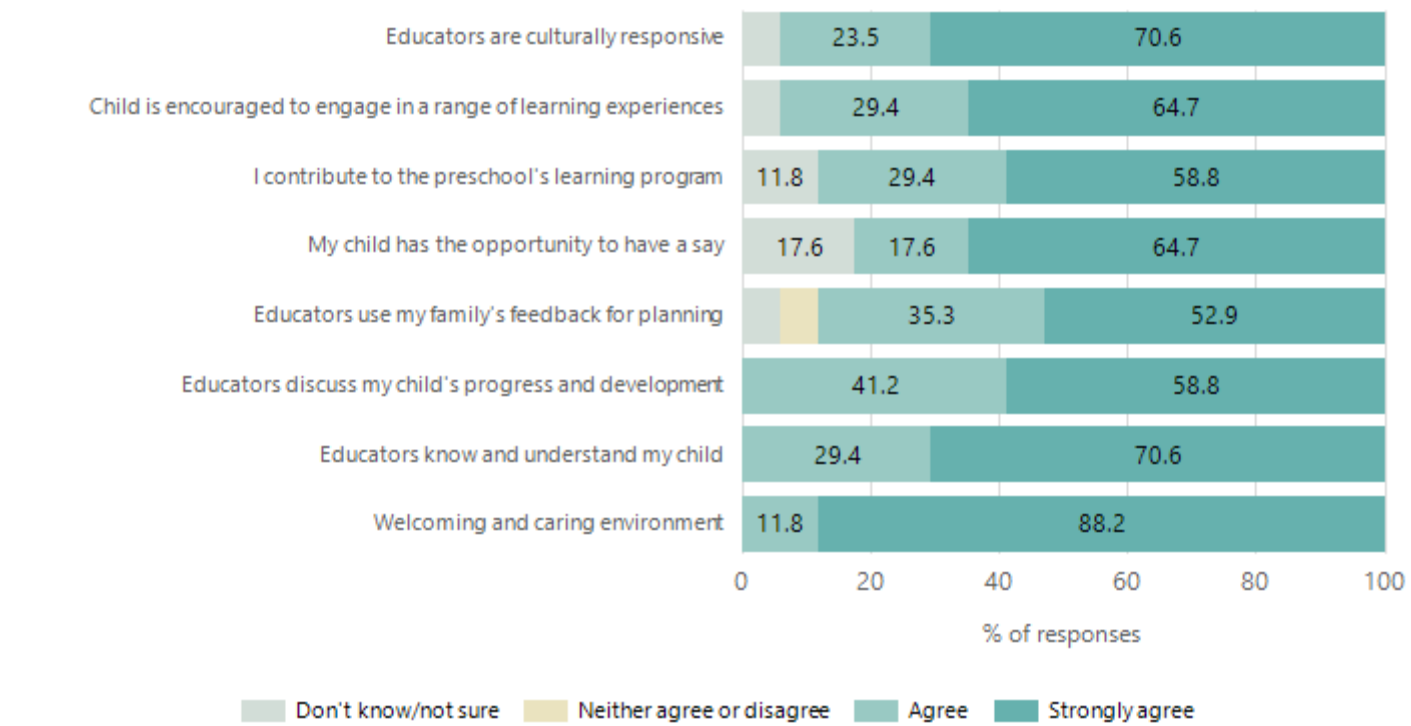
# Preschool Family Opinion Survey

## Governance, Leadership and Management



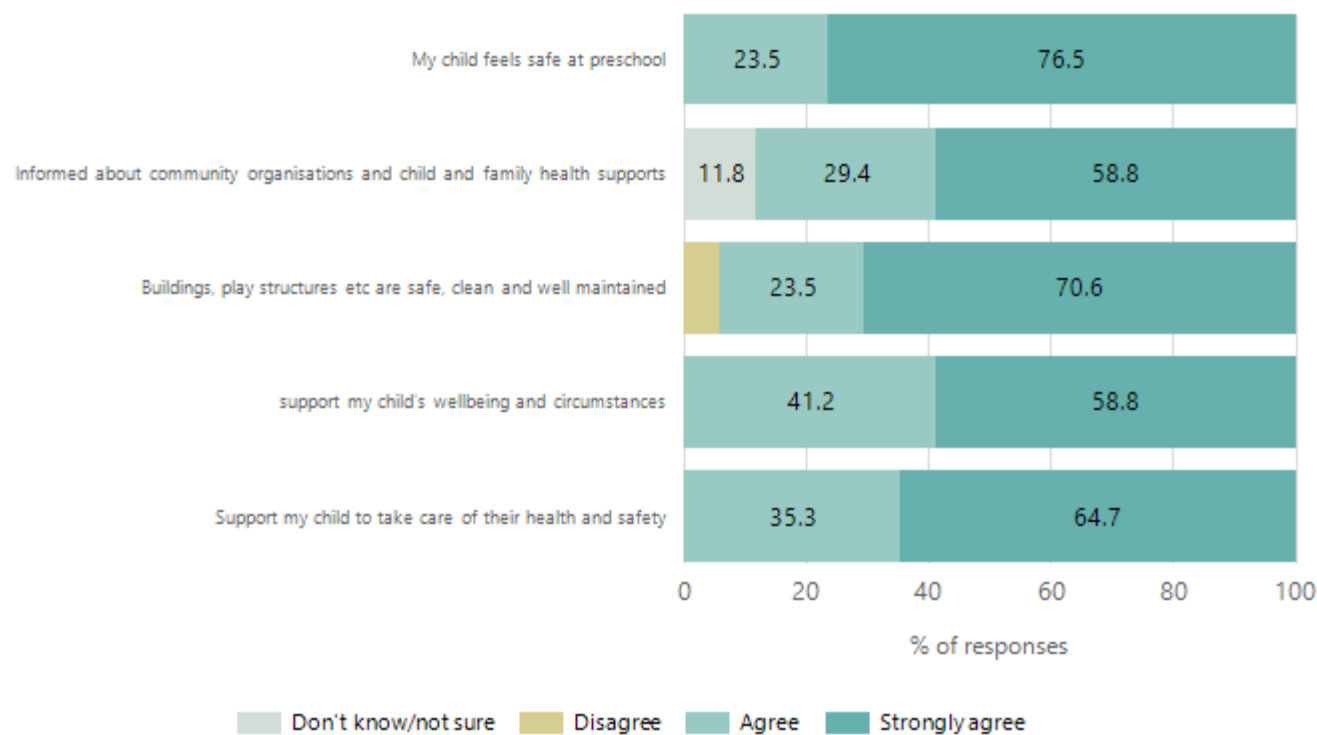
Data Source: 2024 Department for Education Preschool Family Opinions Survey, Term 3 2024.

## Quality of Teaching and Learning



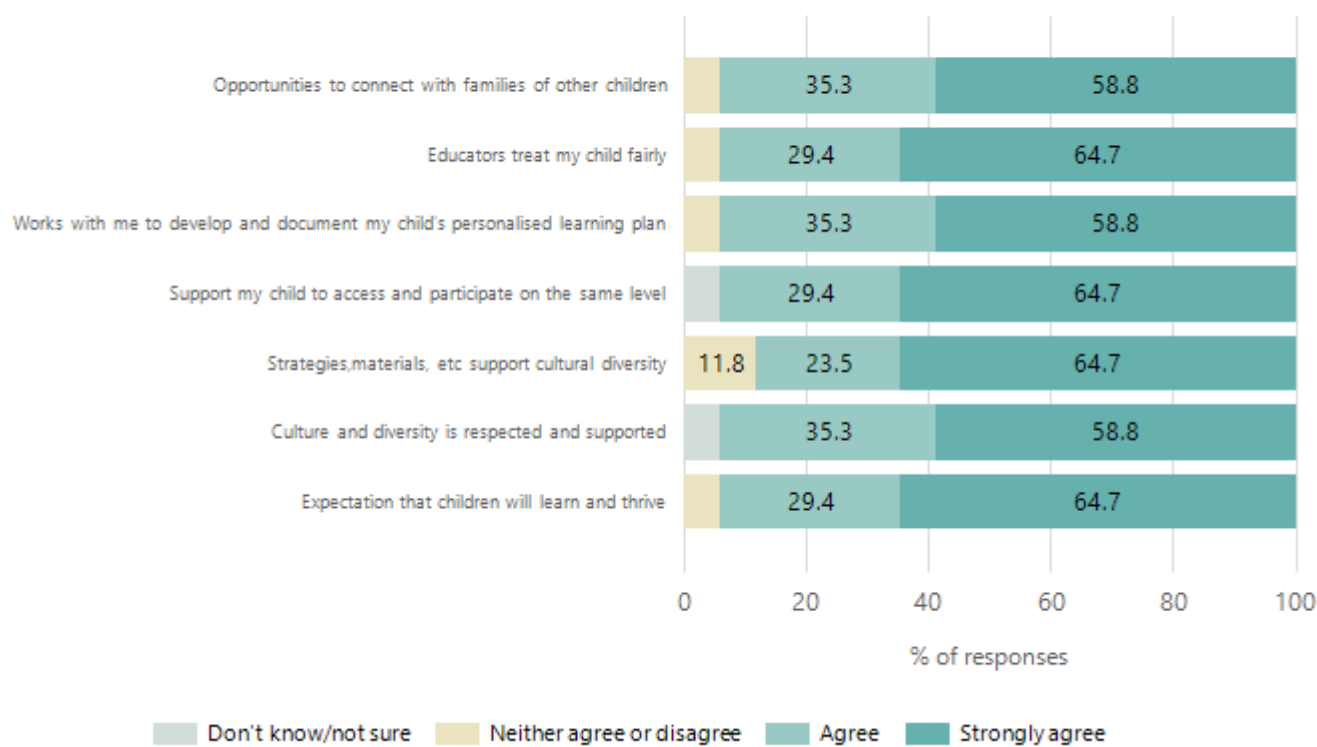
Data Source: 2024 Department for Education Preschool Family Opinions Survey, Term 3 2024.

# Safety, Health and Wellbeing



Data Source: 2024 Department for Education Preschool Family Opinions Survey, Term 3 2024.

# Support and Inclusion



Data Source: 2024 Department for Education Preschool Family Opinions Survey, Term 3 2024.

# Destination Schools

Feeder Schools (Site number - Name)	2022	2023	2024
0255 - Angle Vale Primary School	41.0%	31.3%	35.7%
1913 - Riverbanks College B-12	10.3%	13.8%	26.8%
8033 - St Columba College		3.8%	
8202 - Trinity College Gawler River School	12.8%	15.0%	12.5%
8502 - Xavier College Two Wells Campus	9.0%		
9999 - Unknown	12.8%	28.8%	18.8%

Note: The data is collected in term 3. It does not reflect actual schools enrolled in by existing preschool children. A blank cell indicates there was no data for students enrolled.

Data Source: Department for Education Destination Data Report, 2024.

# Highest Qualifications held by the teaching workforce and workforce composition

All teachers at this school are qualified and registered with the SA Teachers Registration Board.

Qualification Level	Number of Qualifications
Bachelor's degrees or Diplomas	3
Postgraduate Qualifications	1

Data Source: Data extracted from Mandatory Workforce Information Collections as on the last pay date of June 2024. As self-reported by staff in the system.

Please note: Data includes staff who are Actively employed and on extended paid leave. Please note only the highest qualification of the Teaching staff is reported. Excludes any number of other certifications earned.

## Workforce composition including indigenous staff

	Teaching Staff		Non-Teaching Staff	
	Indigenous	Non-Indigenous	Indigenous	Non-Indigenous
Full-Time Equivalents	0.0	3.3	0.0	3.4
Persons	0.0	4.0	0.0	6.0

Data Source: Data extracted from Mandatory Workforce Information Collection as on the last pay date of June 2024.

Please note: Data includes staff who are actively employed and on extended paid leave. "Indigenous category" is self-reported by staff in the system.

# Financial Statement

Funding Source	Amount
Grants: State	\$0
Grants: Commonwealth	\$682,515.29
Parent Contributions	\$41,447.18
Fund Raising	\$3,842.00
Other	\$4086.12

Data Source: School supplied data.