

2023 annual report to the Community

# Blair Athol North B-6 School and Blair Athol North School B-7 Chn Ctr

Blair Athol North B-6 School number: 1903

Blair Athol North School B-7 Chn Ctr number: 1206

Blair Athol North School B-6 IELC: 1895

Partnership: Torrens



School principal:

Leonie Shelley

*LShelley*

Date of endorsement:

19/02/2024



# Context Statement

Blair Athol North B-6 School caters for students from B-6, with a Children's Centre and Intensive English Language Centre on site. At the time of this report, the enrolment in 2023 is 393. Blair Athol North B-6 School is classified as Category 2 on the Department for Education Index of Educational Disadvantage. At the time of this report, the school population includes 11% Aboriginal students, 25% students with disabilities, 38% students with English as an additional language or dialect (EALD) funded background. Further information about the school is available on the school's website (including its context statement), as well as the My School website.

Information about Blair Athol North School B-7 Children Centre is available on the centre's website, as well as the Australian Children's Education and Care Quality Authority (ACECQA) website.

## Leadership Report

2023 was another highly engaging year for the students at Blair Athol North B-6 School. Highlights included:

- Opening of the Rain Garden, including the smoking ceremony by Uncle Moogy
- Establishment of the Soccer Academy which has created a unique transition experience for students continuing their education at Roma Mitchell Secondary College
- Continued relationship with Green Adelaide and the Seeds project (Stewardship of Endemic Endangered Species)
- Visits from Curtis Stone (Port Adelaide Football Club wellbeing program), SA dental health
- Young Leaders involved with Council of Port Adelaide and Enfield in a leadership project (& assessing community projects)
- Official opening of the Aboriginal Learner Studio
- Continued resurgence of IELC with 40 children exited in 2023
- Successful first mid-year intake for 4-year-olds into the Children Centre
- Piloting children's health check in Children's Centre
- Our kitchen garden showcasing statewide professional learning for Stephanie Alexander Kitchen Gardens, with our kitchen garden being recognised as one of the best nation-wide.
- Family Community Afternoon

The leadership team at Blair Athol North B-6 School would like to thank all staff, learners and families for another successful year in 2023.

## Governing Council Report

Thank you to all members of the 2023 Governing Council: 5 parent representatives (all elected in 2023 for one year), a staff representative, and the school principal as returning officer. During 2023, Governing Council strengthened their support for the school community through understanding the many aspects of education at BANB6. Some highlights were:

- The children's centre's transition for the mid-year intake was handled well and the children seemed to find a place to belong. The Governing Council appreciated the effort the Team put in to help this come to fruition.
- The renewed Department for Education strategy and purpose for public education for the continual improvement of education of our children has become more aligned with the BANB6 learning structure that we have in place, further cementing the value of our methods and success in guiding our children to succeed.
- IELC's growth over the 2023 year has been wonderful to see since the effect COVID had in previous years. The kids are progressing well and have become an integral part of our multicultural community.

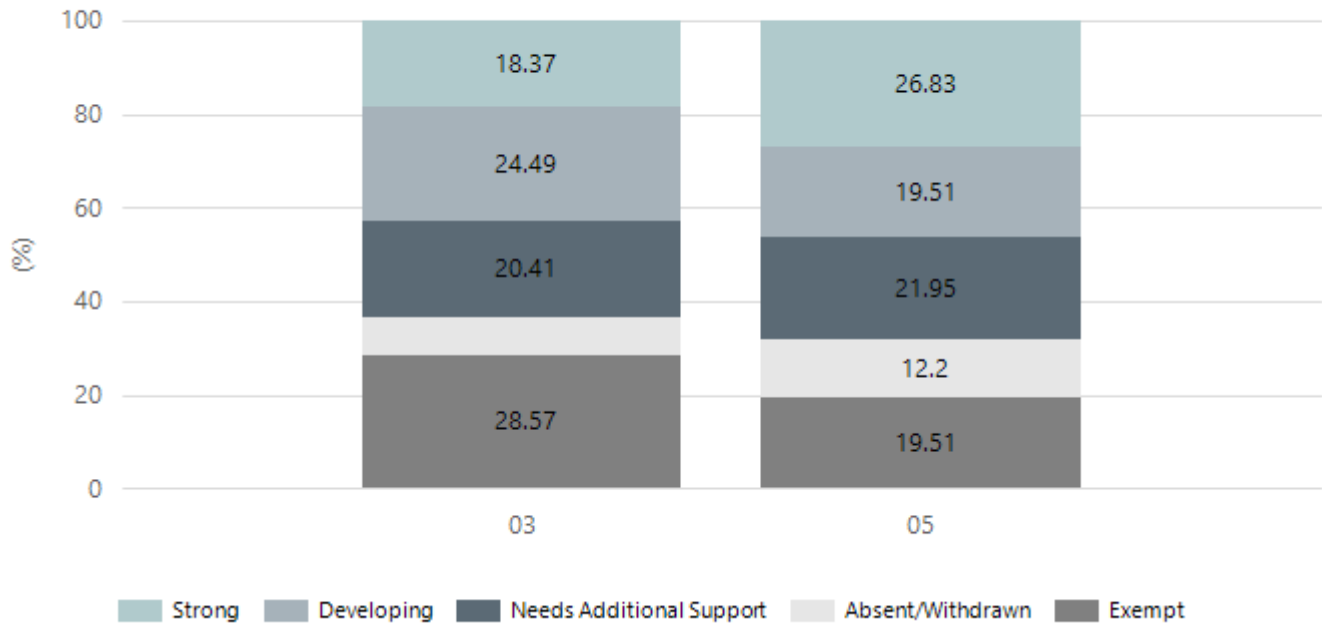
Governing Council would like to thank Darren Stevenson for all his efforts over the past several years, leading the BANB6 community. His leadership and teamwork has been appreciated.

# Performance Summary

## NAPLAN Proficiency

In 2023, the Australian Curriculum, Assessment and Reporting Authority (ACARA) - a Commonwealth Independent statutory authority - announced changes to NAPLAN performance reporting. This new way of reporting by ACARA that NAPLAN results from 2023 will not be comparable to previous years. The new approach replaces the previous numerical NAPLAN bands and the national minimum standard.

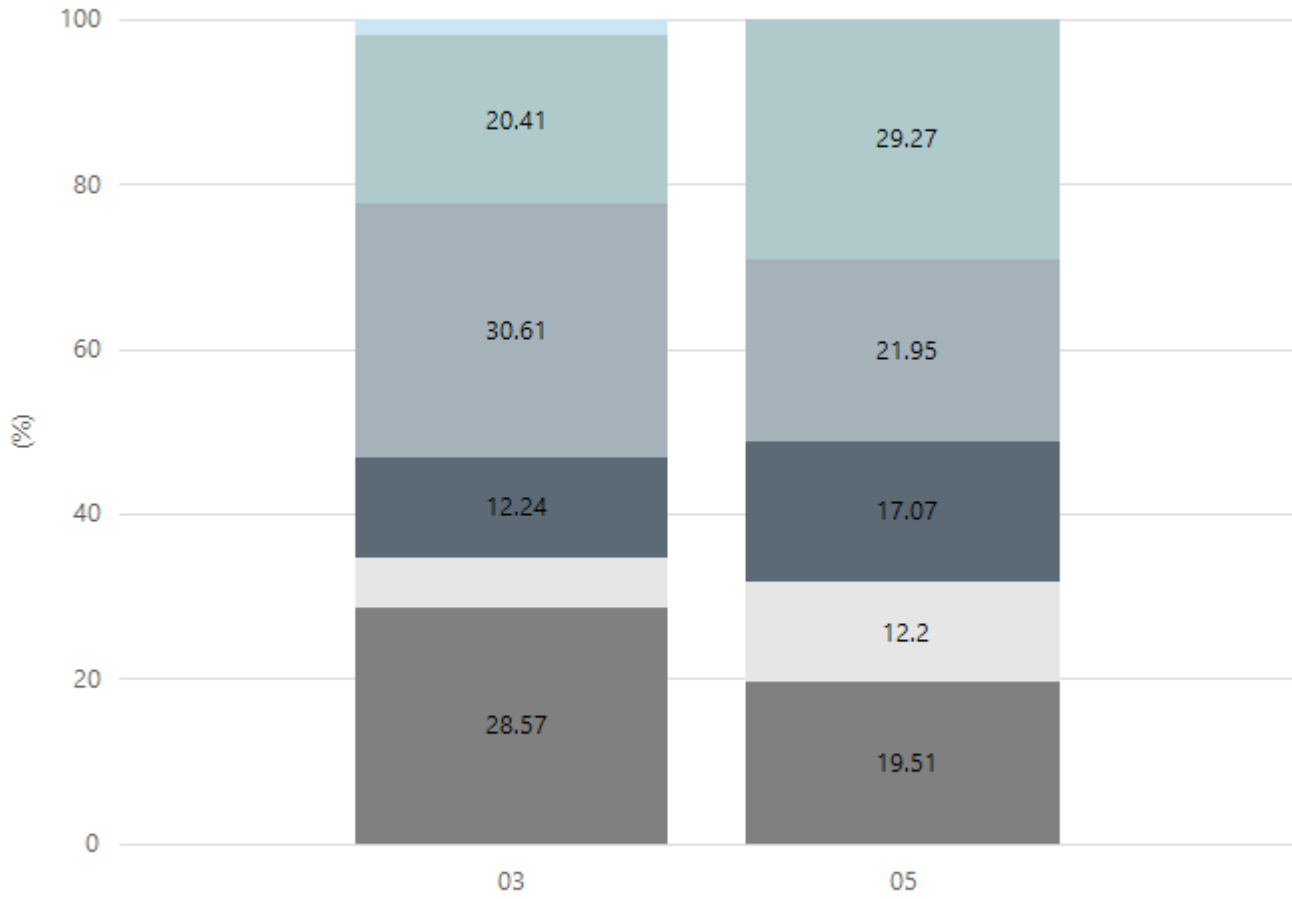
### Numeracy



Year Level	03	05
Strong	9	11
Developing	12	8
Needs Additional Support	10	9
Absent/Withdrawn	4	5
Exempt	14	8
Total	49	41

Data Source: Department for Education Assessment Data Holdings, 2023. When there are less than six students in a cohort, no data is supplied.

## Reading

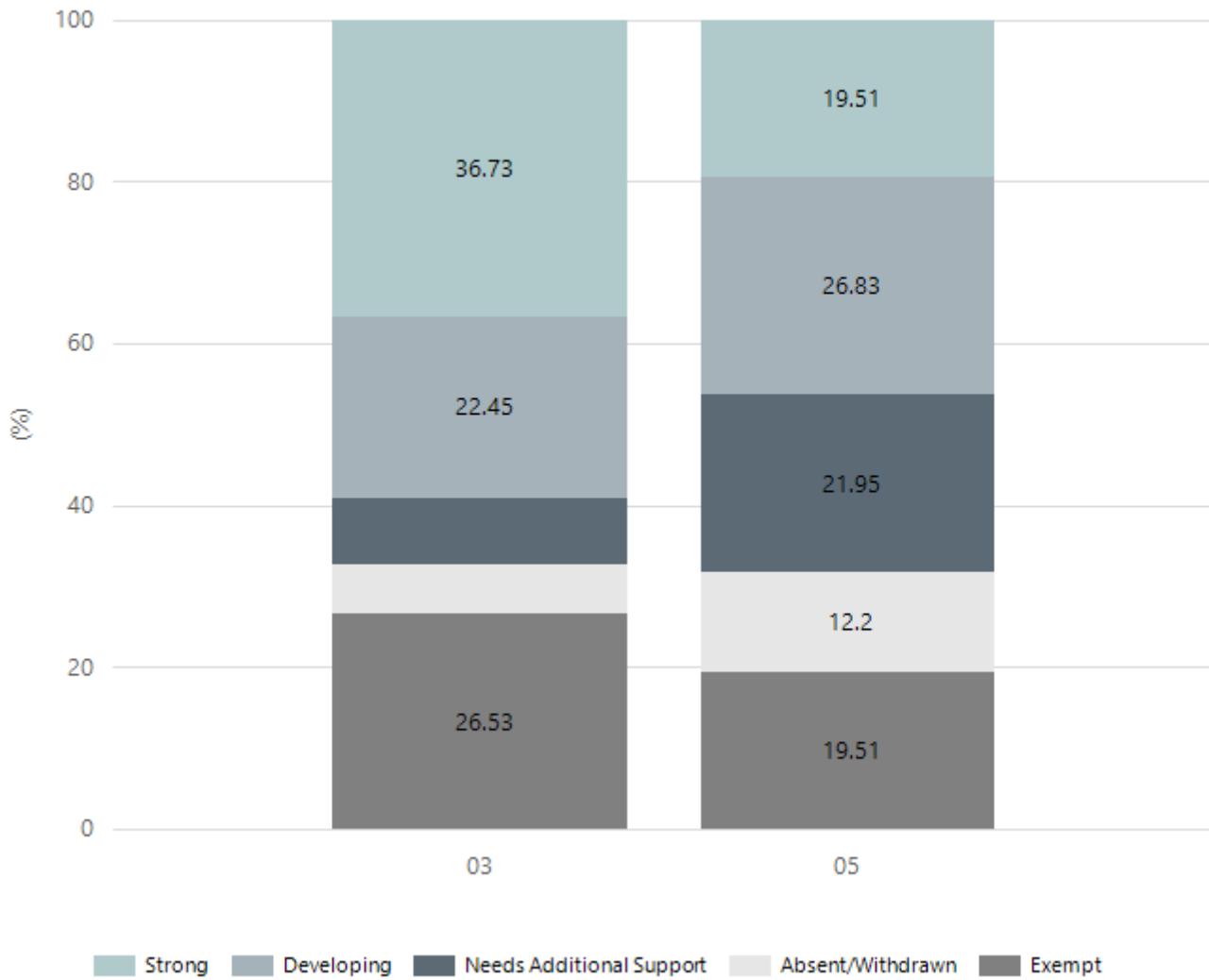


■ Exceeding 
 ■ Strong 
 ■ Developing 
 ■ Needs Additional Support 
 ■ Absent/Withdrawn 
 ■ Exempt

Year Level	03	05
Exceeding	1	
Strong	10	12
Developing	15	9
Needs Additional Support	6	7
Absent/Withdrawn	3	5
Exempt	14	8
<b>Total</b>	<b>49</b>	<b>41</b>

Data Source: Department for Education Assessment Data Holdings, 2023. When there are less than six students in a cohort, no data is supplied.

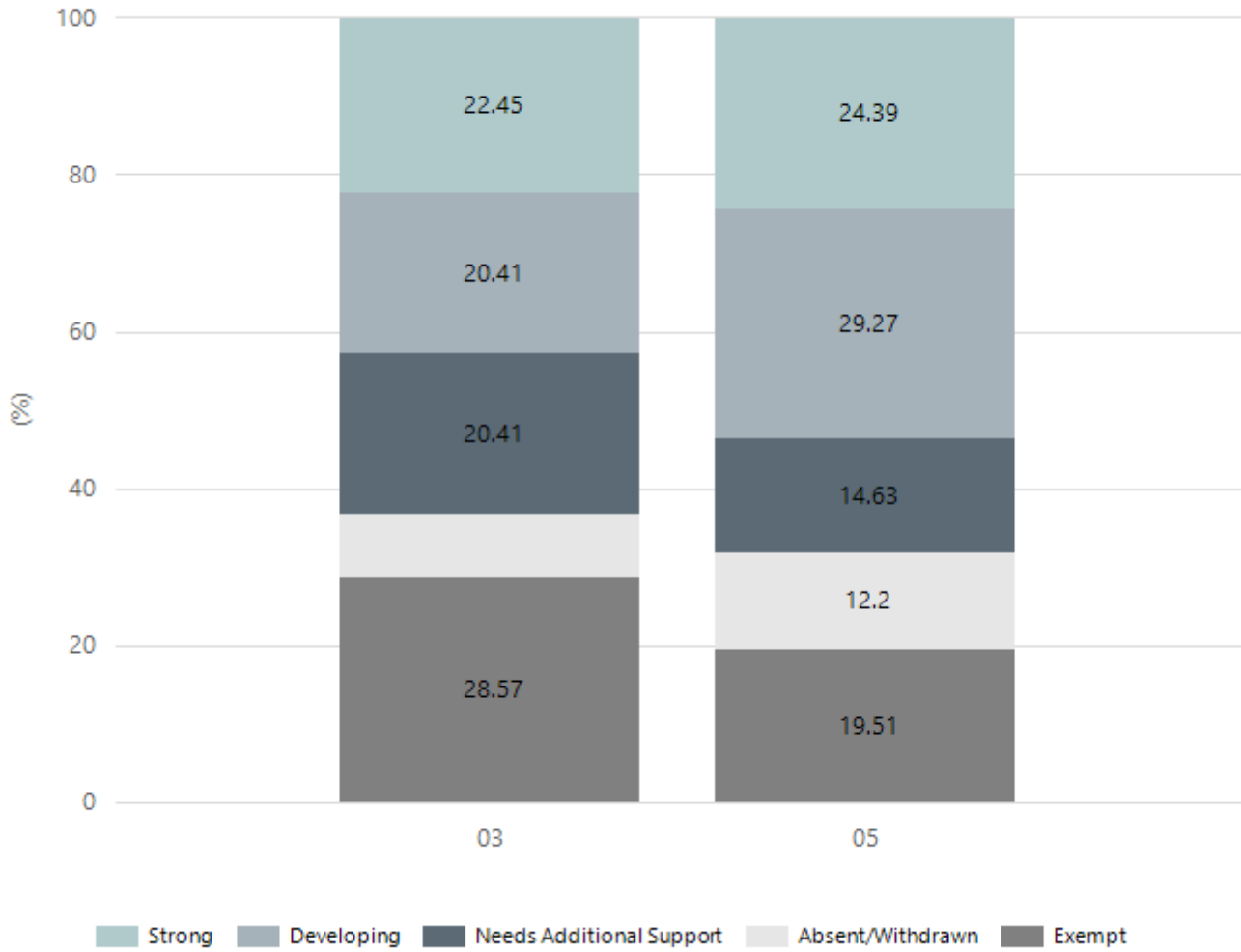
## Writing



Year Level	03	05
Strong	18	8
Developing	11	11
Needs Additional Support	4	9
Absent/Withdrawn	3	5
Exempt	13	8
Total	49	41

Data Source: Department for Education Assessment Data Holdings, 2023. When there are less than six students in a cohort, no data is supplied.

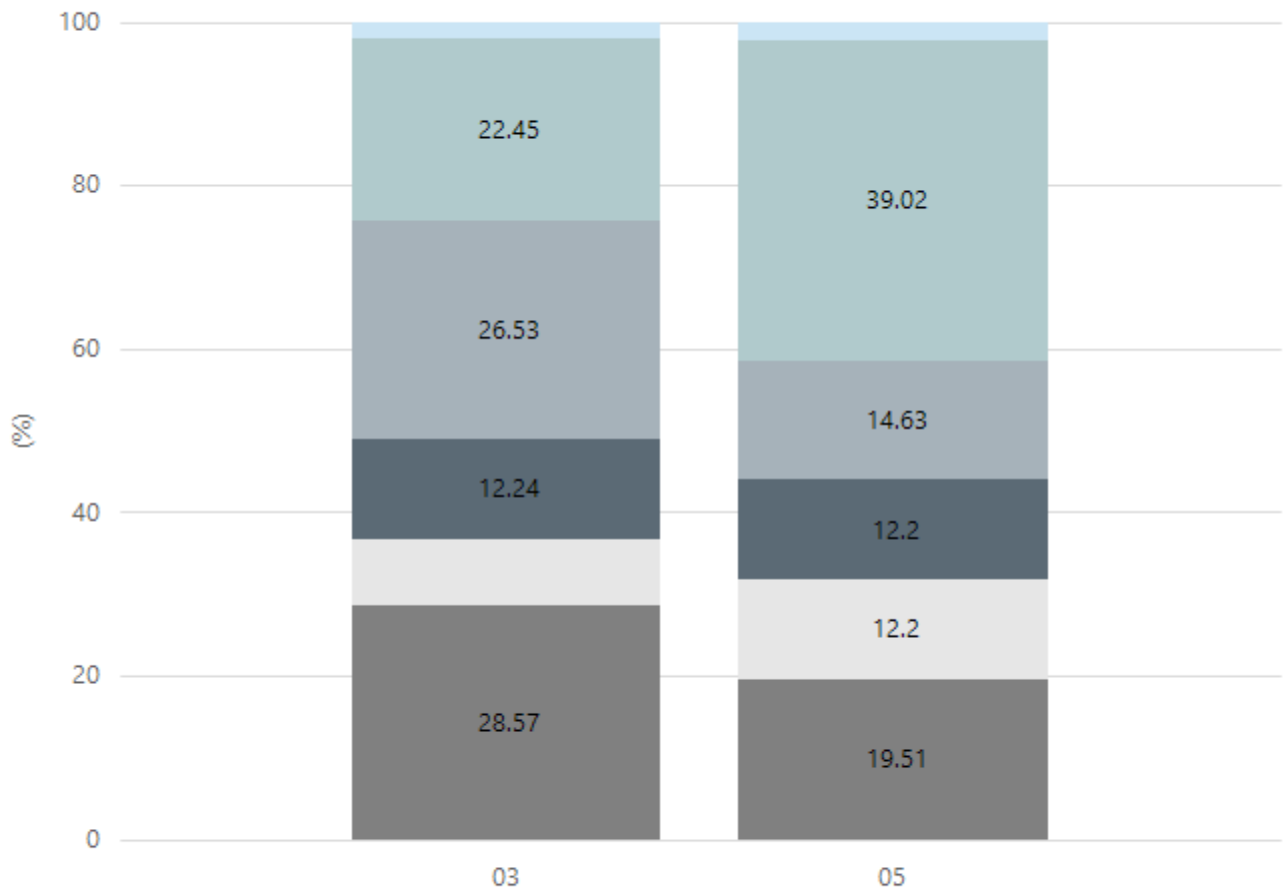
## Grammar



Year Level	03	05
Strong	11	10
Developing	10	12
Needs Additional Support	10	6
Absent/Withdrawn	4	5
Exempt	14	8
Total	49	41

Data Source: Department for Education Assessment Data Holdings, 2023. When there are less than six students in a cohort, no data is supplied.

## Spelling



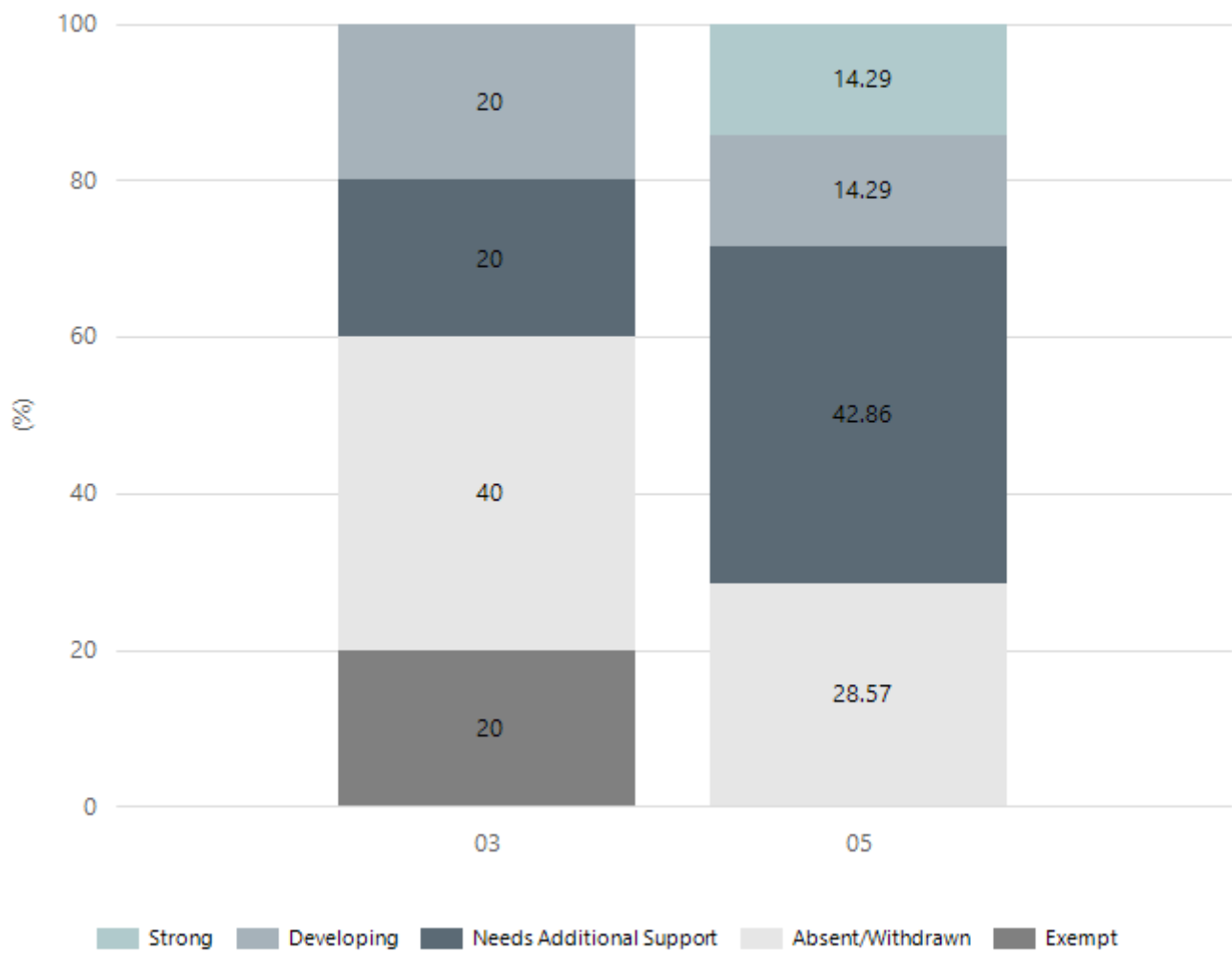
Exceeding Strong Developing Needs Additional Support Absent/Withdrawn Exempt

Year Level	03	05
Exceeding	1	1
Strong	11	16
Developing	13	6
Needs Additional Support	6	5
Absent/Withdrawn	4	5
Exempt	14	8
Total	49	41

Data Source: Department for Education Assessment Data Holdings, 2023. When there are less than six students in a cohort, no data is supplied.

# NAPLAN Proficiency - Aboriginal Learners

## Numeracy

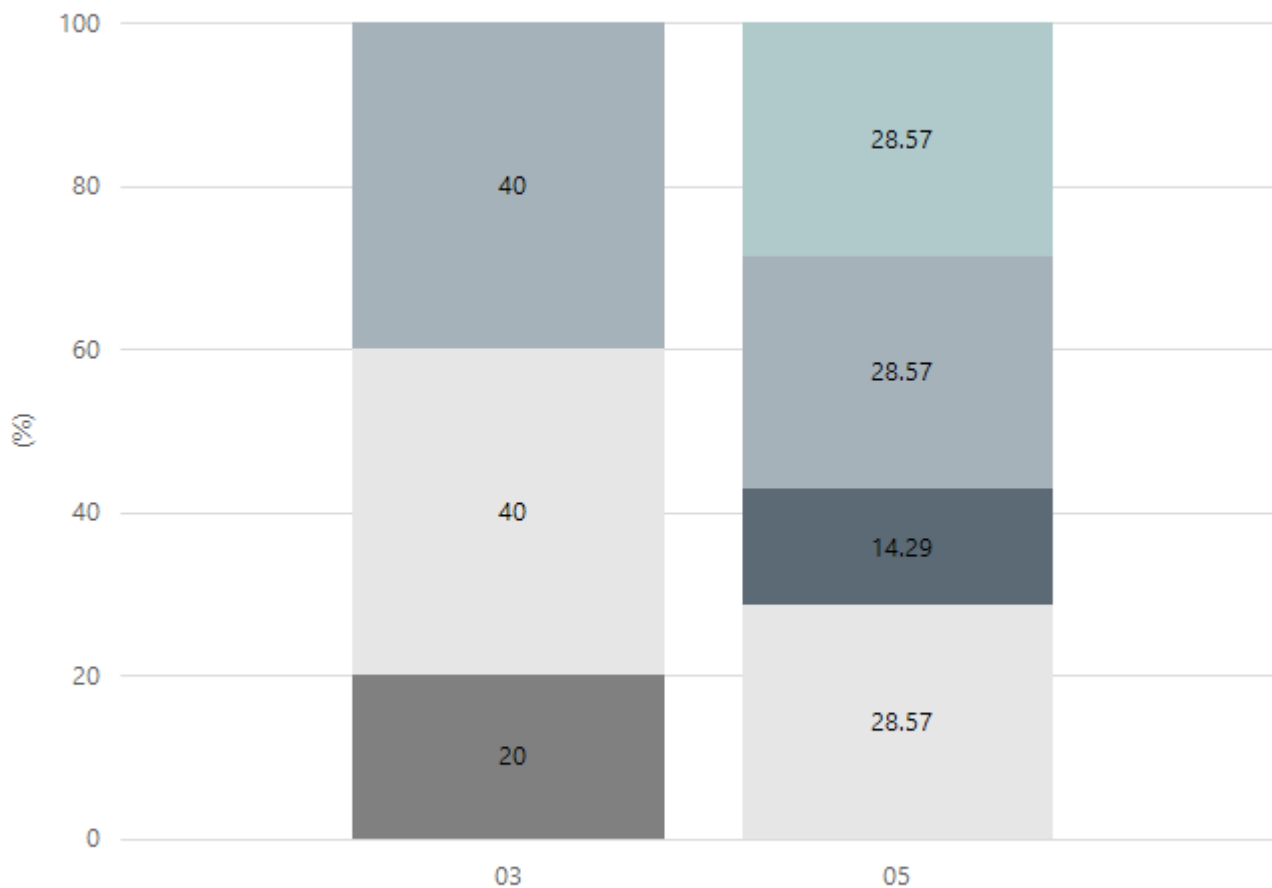


Year Level	03	05
Strong		1
Developing	1	1
Needs Additional Support	1	3
Absent/Withdrawn	2	2
Exempt	1	
Total	5	7

Data Source: Department for Education Assessment Data Holdings, 2023. When there are less than six students in a cohort, no data is supplied. Only data for Aboriginal learners is displayed.



## Reading

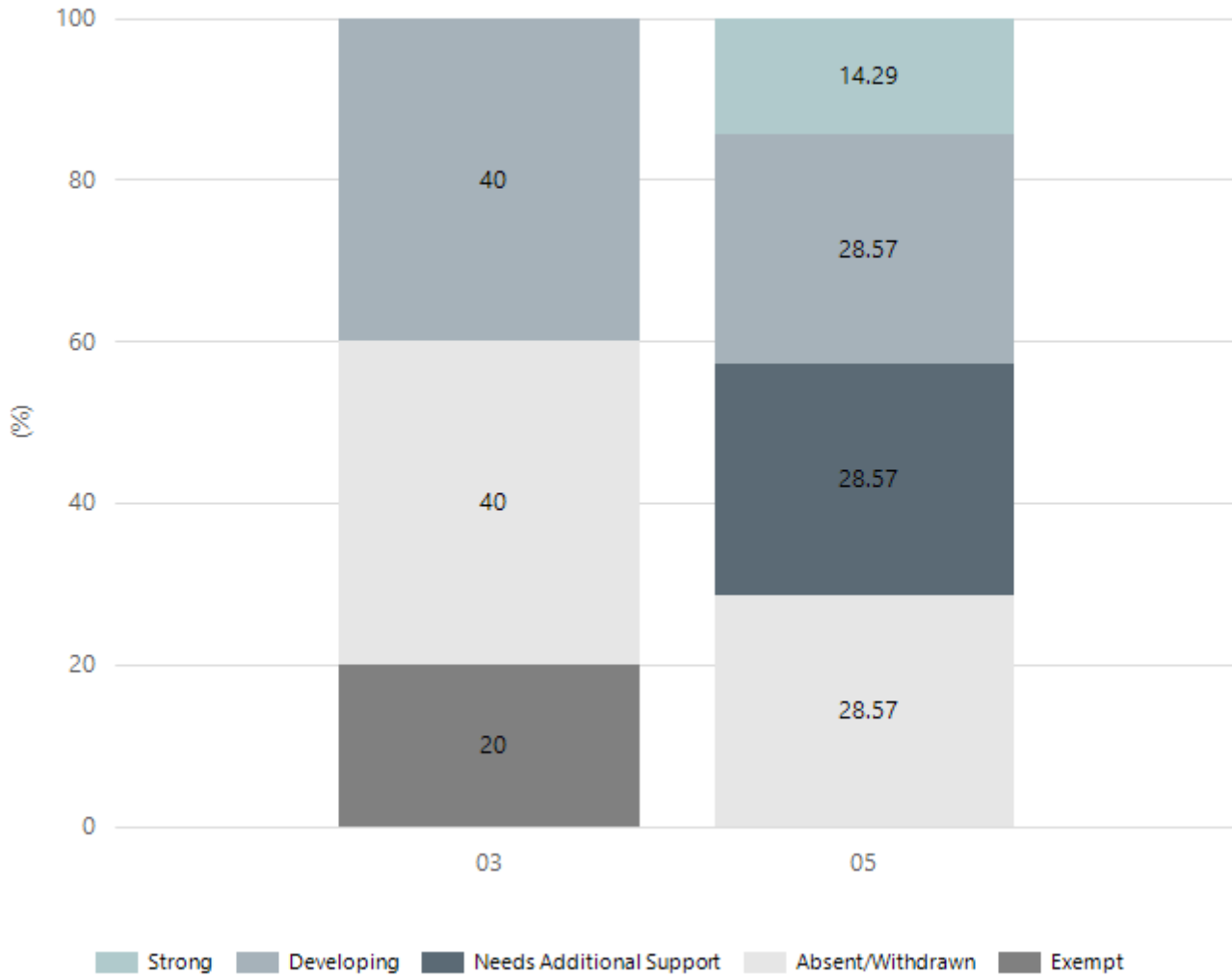


■ Strong 
 ■ Developing 
 ■ Needs Additional Support 
 ■ Absent/Withdrawn 
 ■ Exempt

Year Level	03	05
Strong		2
Developing	2	2
Needs Additional Support		1
Absent/Withdrawn	2	2
Exempt	1	
<b>Total</b>	<b>5</b>	<b>7</b>

Data Source: Department for Education Assessment Data Holdings, 2023. When there are less than six students in a cohort, no data is supplied. Only data for Aboriginal learners is displayed.

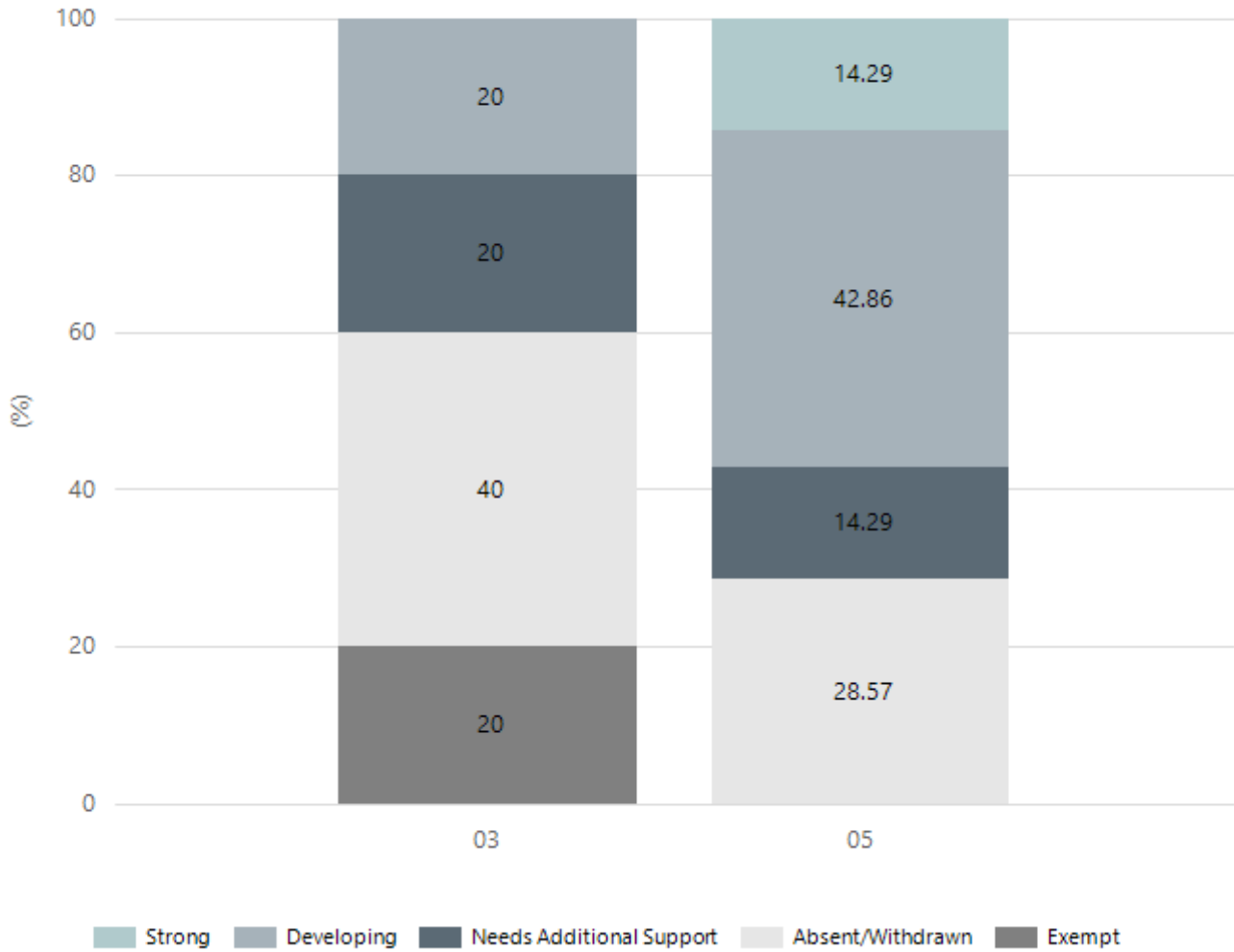
## Writing



Year Level	03	05
Strong		1
Developing	2	2
Needs Additional Support		2
Absent/Withdrawn	2	2
Exempt	1	
Total	5	7

Data Source: Department for Education Assessment Data Holdings, 2023. When there are less than six students in a cohort, no data is supplied. Only data for Aboriginal learners is displayed.

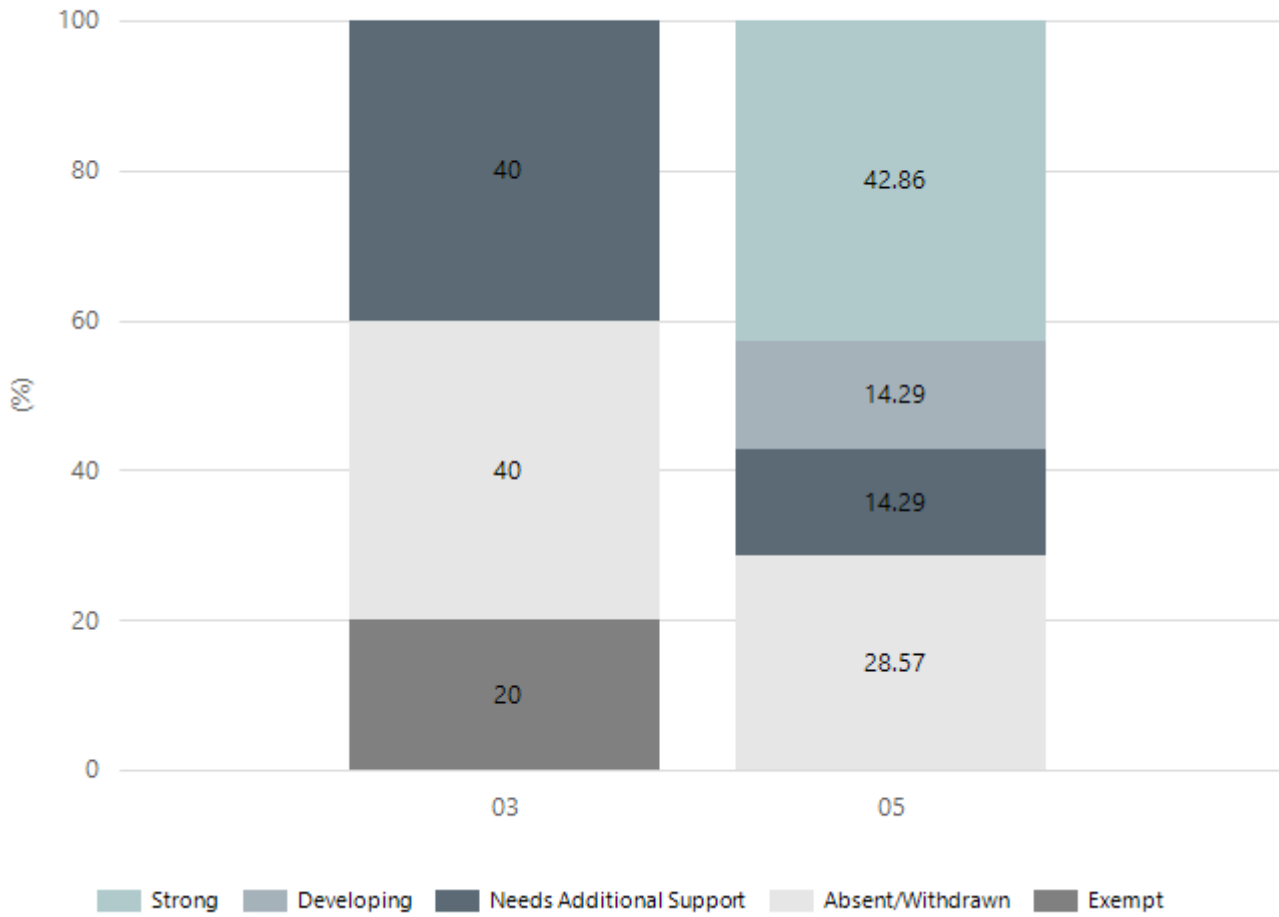
## Grammar



Year Level	03	05
Strong		1
Developing	1	3
Needs Additional Support	1	1
Absent/Withdrawn	2	2
Exempt	1	
Total	5	7

Data Source: Department for Education Assessment Data Holdings, 2023. When there are less than six students in a cohort, no data is supplied. Only data for Aboriginal learners is displayed.

## Spelling



Year Level	03	05
Strong		3
Developing		1
Needs Additional Support	2	1
Absent/Withdrawn	2	2
Exempt	1	
Total	5	7

Data Source: Department for Education Assessment Data Holdings, 2023. When there are less than six students in a cohort, no data is supplied. Only data for Aboriginal learners is displayed.

## Preschool Attendance

	Term 1	Term 2	Term 3	Term 4
2020 centre	87.2%		71.4%	82.6%
2021 centre	72.4%	80.7%	85.1%	84.1%
2022 centre	67.9%	64.9%	59%	73.5%
2023 centre	80.4%	81.5%	70.6%	70.6%
2020 state	89.1%		84.6%	85.8%
2021 state	87.3%	85.3%	87.1%	84.5%
2022 state	83.6%	77.6%	77.9%	77.8%
2023 state	85.4%	82.9%	83.4%	81.4%

Based on attendances recorded in the two-week reference period each term. Data for eligible enrolments as described in the department's Enrolment policy. Attendance rates may differ to previous reporting with the transfer from calculations based on deemed attendance to actual attendance using booked hours divided by attended hours. Data Source: Department for Education Attendance Data, Semester 1 Report 2023. A blank cell indicates there we no students enrolled.

Note: Term 2 2020 data may not be available for all preschools.

## School Attendance

Year Level	2021	2022	2023
Reception	82.3%	81.4%	79.7%
Year 01	84.4%	76.6%	85.7%
Year 02	87.4%	77.6%	83.2%
Year 03	89.0%	81.2%	85.9%
Year 04	86.4%	80.6%	83.9%
Year 05	87.6%	82.0%	83.9%
Year 06	89.9%	80.9%	84.2%
Year 07	87.5%		
Primary Other	88.4%	83.9%	83.8%
Total	87.0%	80.8%	83.8%

Data Source: Department for Education Attendance Data, Semester 1 Report 2023. A blank cell indicates there we no students enrolled. 'Primary Other' includes students enrolled in specialised education options. 'Secondary Other' includes students who have already spent a year at Year 12 and elected to undertake further study at Year 12.

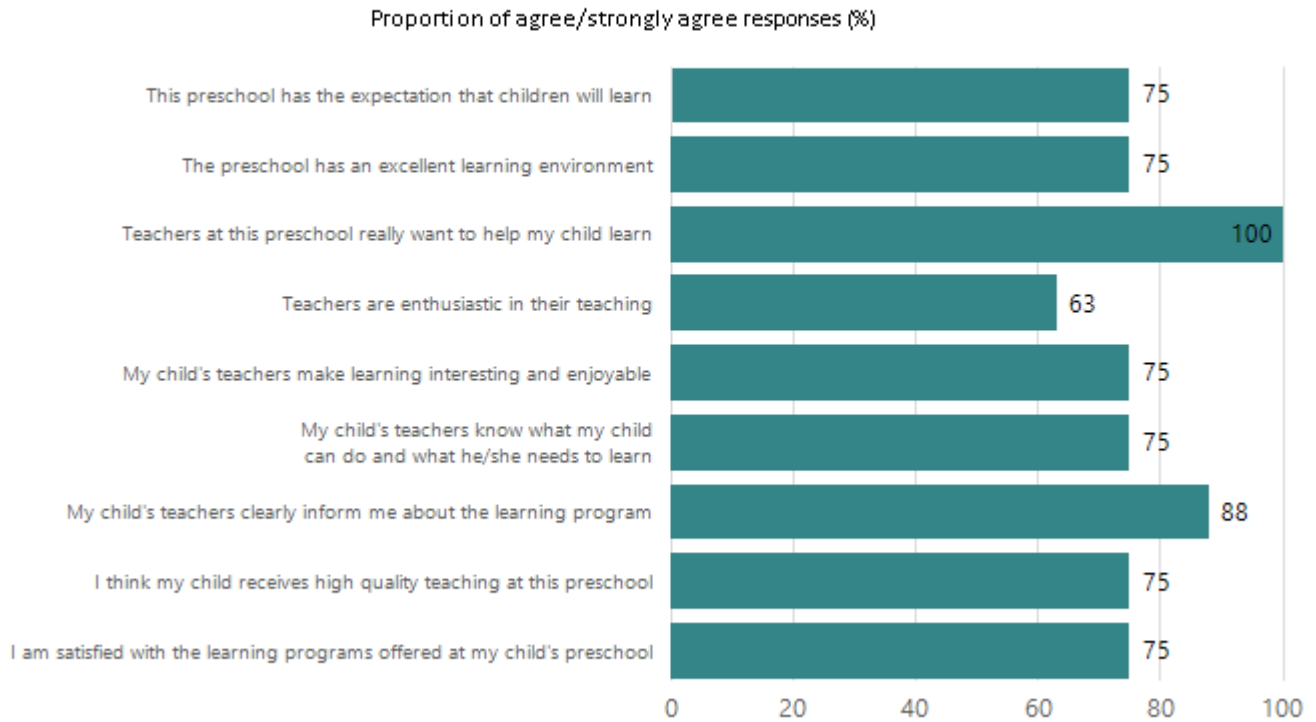
## Attendance Comment

In South Australia, preschool attendance is not compulsory, but it is strongly encouraged. Preschool gives children the best opportunity to develop skills, which prepare them for school. These benefits include establishing positive routines and habits, friendships and connections as well as developing communication, problem-solving and creative skills. All children are entitled to access a preschool program over 4 terms the year before they start school.

In South Australia, all children and young people must be in school from 6 years to 16 years old. They must attend a government or non-government school full time. From age 16 to 17 however, young people must attend school or an approved learning program (such as an apprenticeship, traineeship, accredited course or university). Schools and parents must encourage and support students to come to school every day. Parents and caregivers must make sure their child is enrolled in a school, and attends school all day and everyday it is open, unless a child is sick or has an approved exemption. Teachers and leaders actively follow up when a student misses school, including recording all absences and non-attendance. All schools in South Australia have local attendance procedures governed under the Education and Children's Services Regulations 2020.

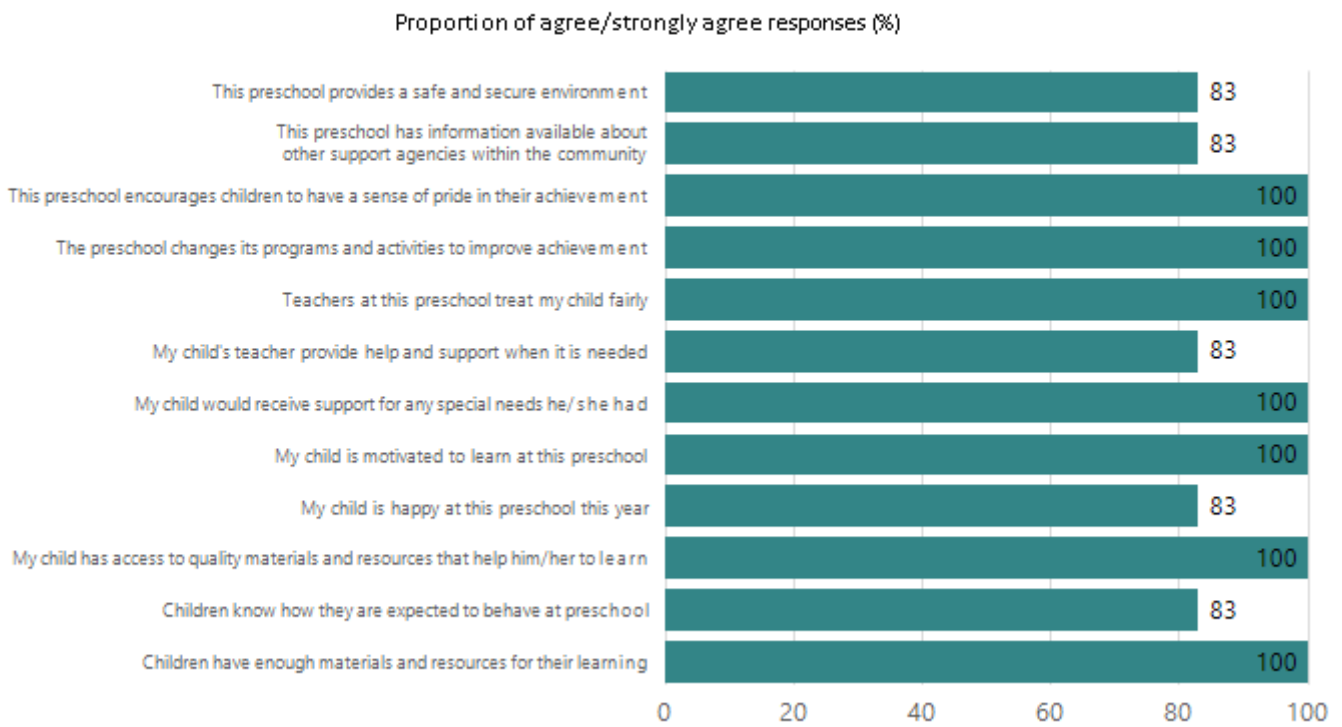
# Preschool Family Opinion Survey

## Quality of Teaching and Learning



Data Source: 2023 Department for Education Preschool Family Opinions Survey, Term 3 2023.

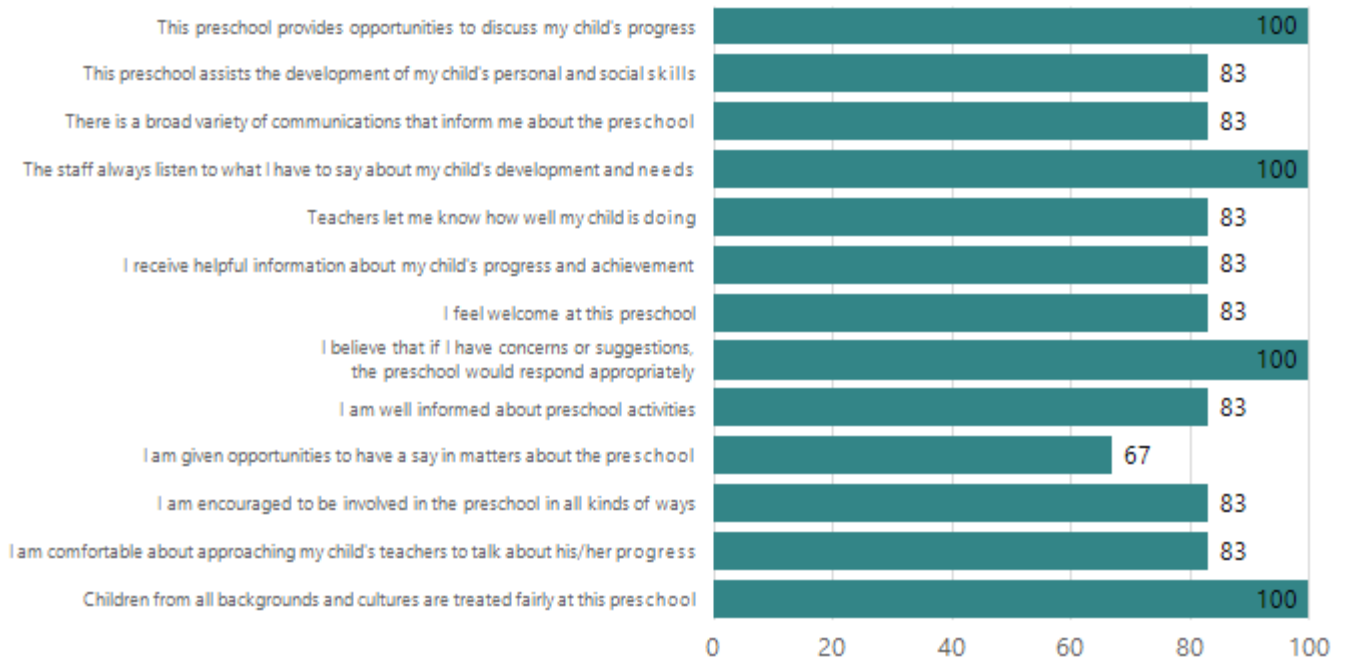
## Support of Learning



Data Source: 2023 Department for Education Preschool Family Opinions Survey, Term 3 2023.

# Relationships and Communication

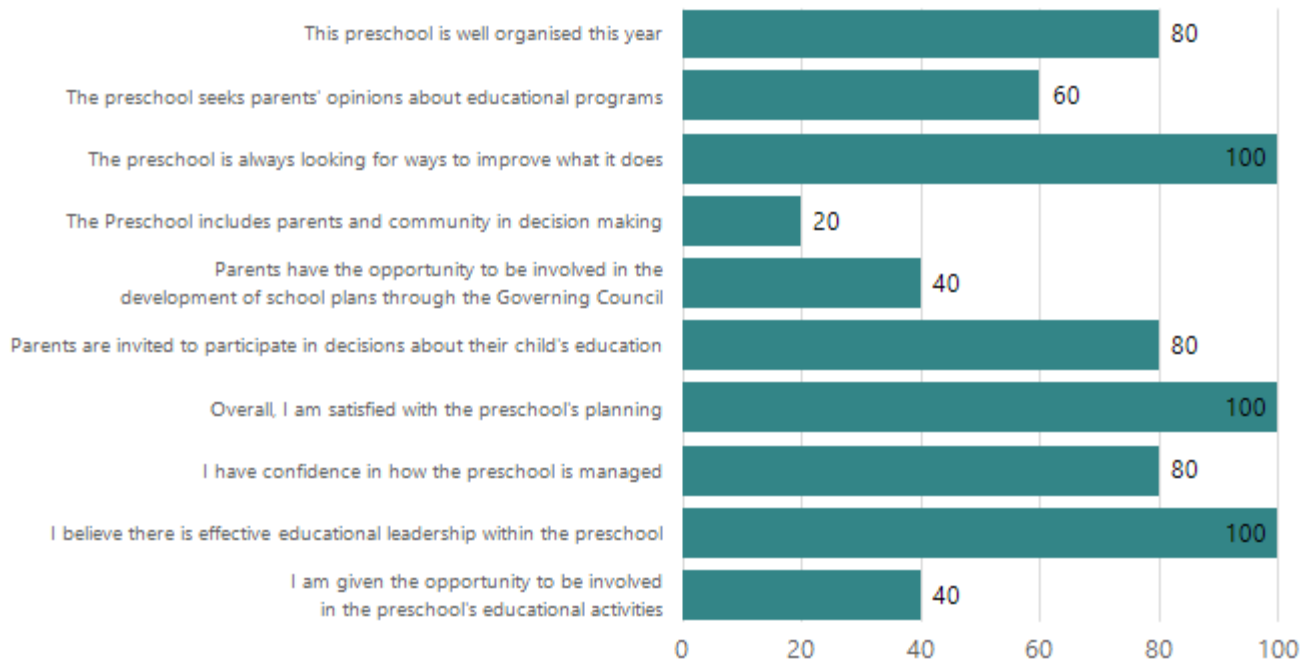
Proportion of agree/strongly agree responses (%)



Data Source: 2023 Department for Education Preschool Family Opinions Survey, Term 3 2023.

# Leadership and Decision Making

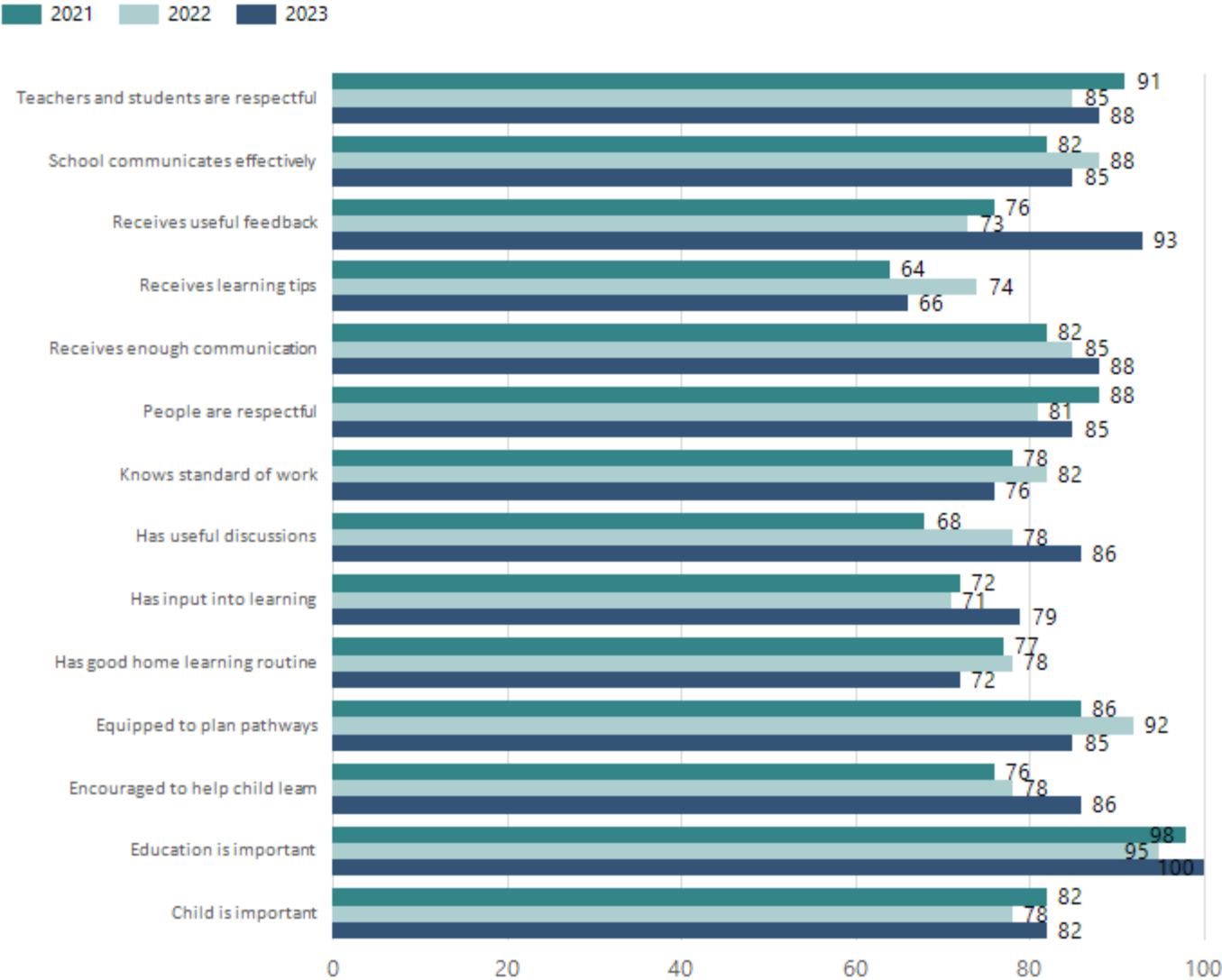
Proportion of agree/strongly agree responses (%)



Data Source: 2023 Department for Education Preschool Family Opinions Survey, Term 3 2023.

# Parent Opinion Survey Results

Proportion of agree/strongly agree response(%)



Data Source: 2023 Department for Education Parent Opinions Survey, Term 3 2023.



## Destination Schools

Feeder Schools (Site number - Name)	2021	2022	2023
1903 - Blair Athol North B-6 School	29.1%	38.9%	42.3%
9999 - Unknown	64.6%	55.6%	52.3%

Note: The data is collected in term 3. It does not reflect actual schools enrolled in by existing preschool children. A blank cell indicates there was no data for students enrolled.

Data Source: Department for Education Destination Data Report, 2023.

## Intended Destination

Leave Reason	Number	%
NG - ATTENDING NON-GOV SCHOOL IN SA	10	19.0%
NS - LEFT SA FOR NSW	4	8.0%
TG - TRANSFERRED TO SA GOVERNMENT SCHOOL	31	60.0%
VI - LEFT SA FOR VIC	2	4.0%
WA - LEFT SA FOR WA	4	8.0%

Data Source: Department for Education Destination Data Report, 2023. Data extract term 3 2023. Data shows recorded destinations for students that left the school in the previous year. Data is uploaded by schools in term 3 and may not reflect final or total figures at time of report creation.

# Highest Qualifications held by the teaching workforce and workforce composition

All teachers at this school are qualified and registered with the SA Teachers Registration Board.

Qualification Level	Number of Qualifications
Bachelor's degrees or Diplomas	29
Postgraduate Qualifications	12

Data Source: Data extracted from Mandatory Workforce Information Collections as on the last pay date of June 2023. As self-reported by staff in the system.

Please note: Data includes staff who are Actively employed and on extended paid leave. Please note only the highest qualification of the Teaching staff is reported. Excludes any number of other certifications earned.

## Workforce composition including indigenous staff

	Teaching Staff		Non-Teaching Staff	
	Indigenous	Non-Indigenous	Indigenous	Non-Indigenous
Full-Time Equivalent	0.0	36.3	1.8	19.4
Persons	0.0	41.0	2.0	28.0

Data Source: Data extracted from Mandatory Workforce Information Collection as on the last pay date of June 2023.

Please note: Data includes staff who are actively employed and on extended paid leave. "Indigenous category" is self-reported by staff in the system.

## Financial Statement

Funding Source	Amount
Grants: State	nil
Grants: Commonwealth	\$24, 750
Parent Contributions	\$107,112.15
Fund Raising	\$3010.90
Other	\$46,747.70

Data Source: School supplied data.