

2025 annual report to the Community

Northfield Primary School and Northfield Preschool

Northfield Primary School number: 314

Northfield Preschool number: 1778

Partnership: Torrens



School principal:

Lucy Zadoyanchuk

A handwritten signature in black ink that reads "Lucy Zadoyanchuk".

Context Statement

Northfield Primary School caters for students from R-6. At the time of this report, the enrolment in 2025 is 352. Northfield Primary School is classified as Category 4 on the Department for Education Index of Educational Disadvantage. At the time of this report, the school population includes 10% Aboriginal students, 8% students with disabilities, 22% students with English as an additional language or dialect (EALD) funded background, 2% children/young people in care. Further information about the school is available on the school's website (including its context statement), as well as the My School website.

Information about Northfield Preschool is available on the centres website, as well as the Australian Childrens Education and Care Quality Authority (ACECQA) website.

Data Source: Department for Education data holdings from Mid census captured in AUGUST 2025.

Governing Council Report

2025 Governing Council Notable Achievements

In 2025, the installation of the school crossing on South Avenue significantly improved student safety when travelling to and from school. This project was achieved through collaboration between the school community, Governing Council and local council.

Governing Council were also able to connect the school with RAA to provide in lesson education about road safety.

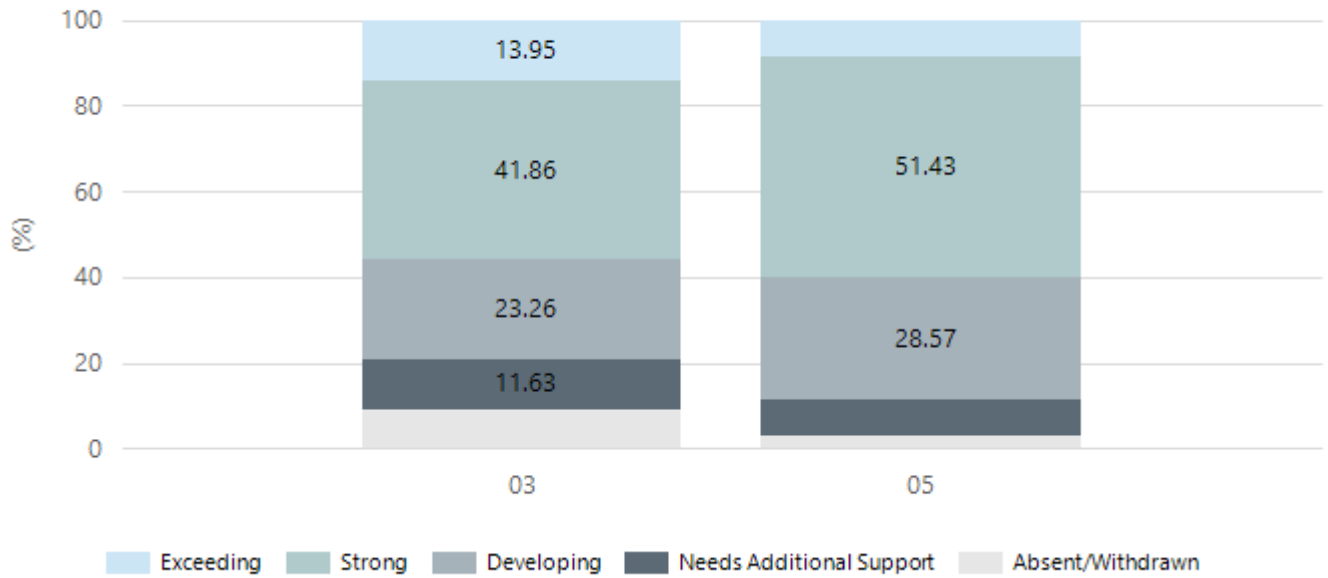
On behalf of the Governing Council, I thank everyone who contributed to another successful year at Northfield Primary School.

Performance Summary

NAPLAN Proficiency

In 2023 the Australian Curriculum, Assessment and Reporting Authority (ACARA) - a Commonwealth Independent statutory authority - announced changes to NAPLAN performance reporting. The new approach replaces the previous numerical NAPLAN bands and the national minimum standard.

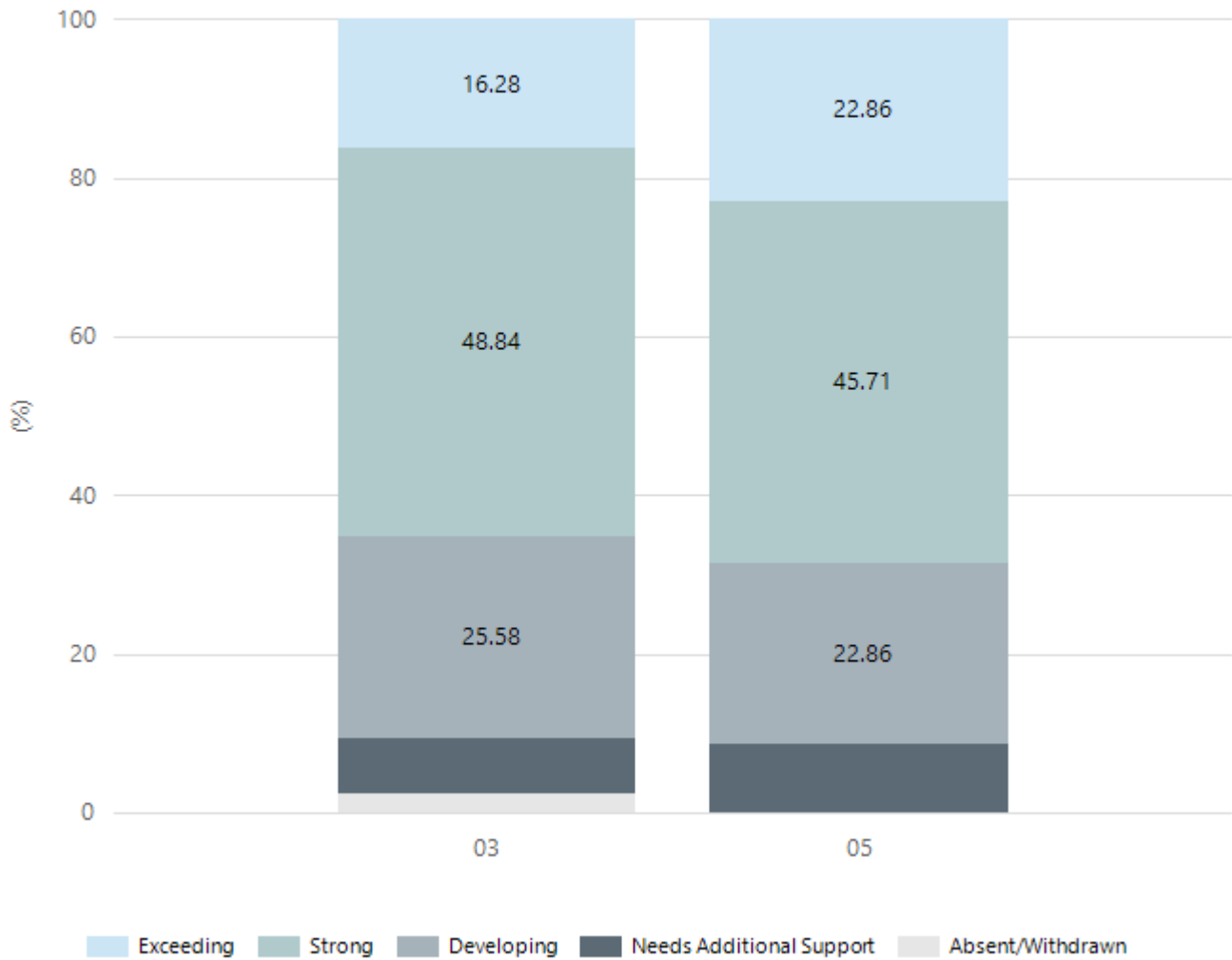
Numeracy



Year Level	03	05
Exceeding	6	3
Strong	18	18
Developing	10	10
Needs Additional Support	5	3
Absent/Withdrawn	4	1
Total	43	35

Data Source: Department for Education Assessment Data Holdings, 2025. If there are less than 6 students who sat NAPLAN in a school, no information will be shown. If a year level has less than 6 students, that year level will not be shown in NAPLAN results.

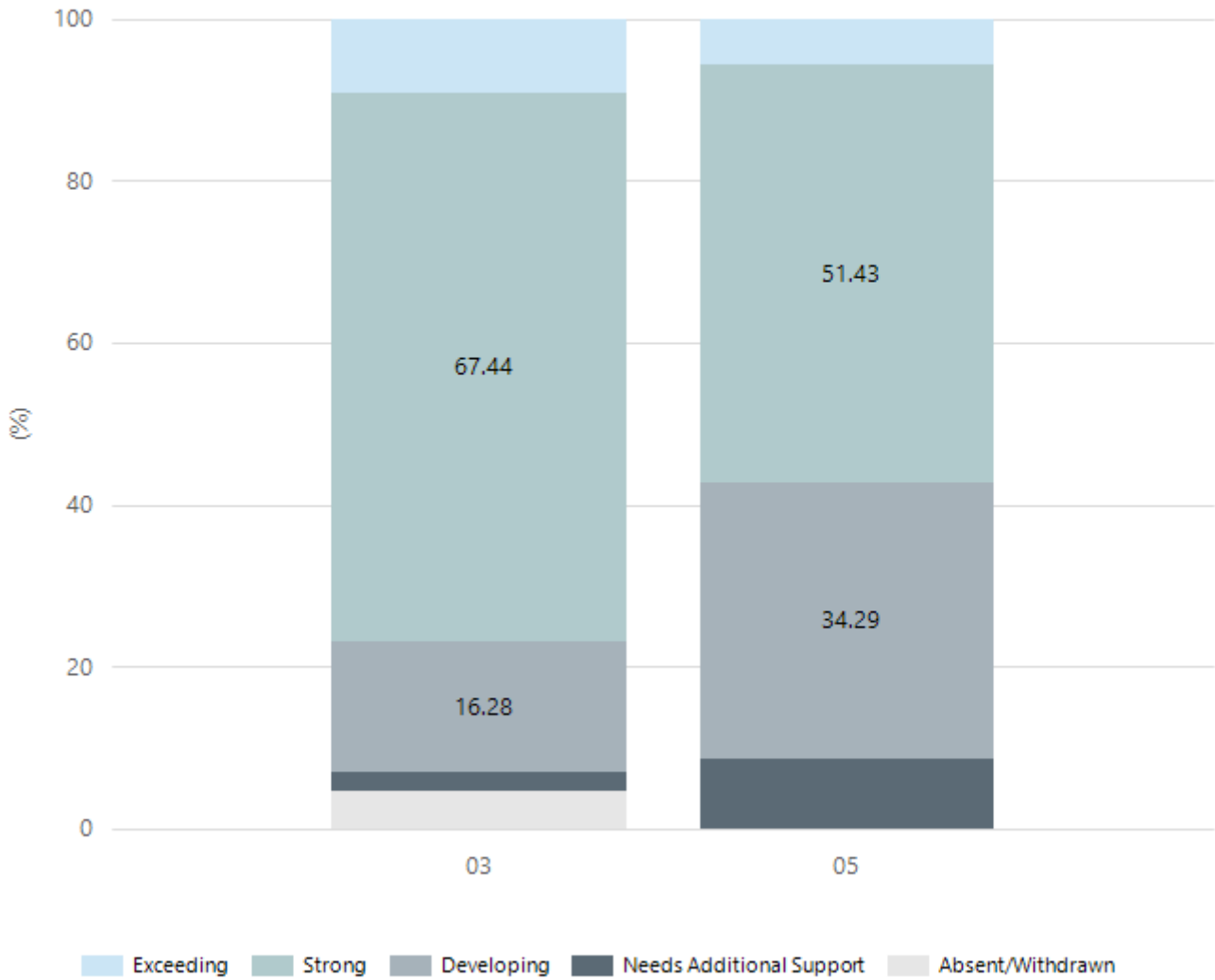
Reading



Year Level	03	05
Exceeding	7	8
Strong	21	16
Developing	11	8
Needs Additional Support	3	3
Absent/Withdrawn	1	
Total	43	35

Data Source: Department for Education Assessment Data Holdings, 2025. If there are less than 6 students who sat NAPLAN in a school, no information will be shown. If a year level has less than 6 students, that year level will not be shown in NAPLAN results.

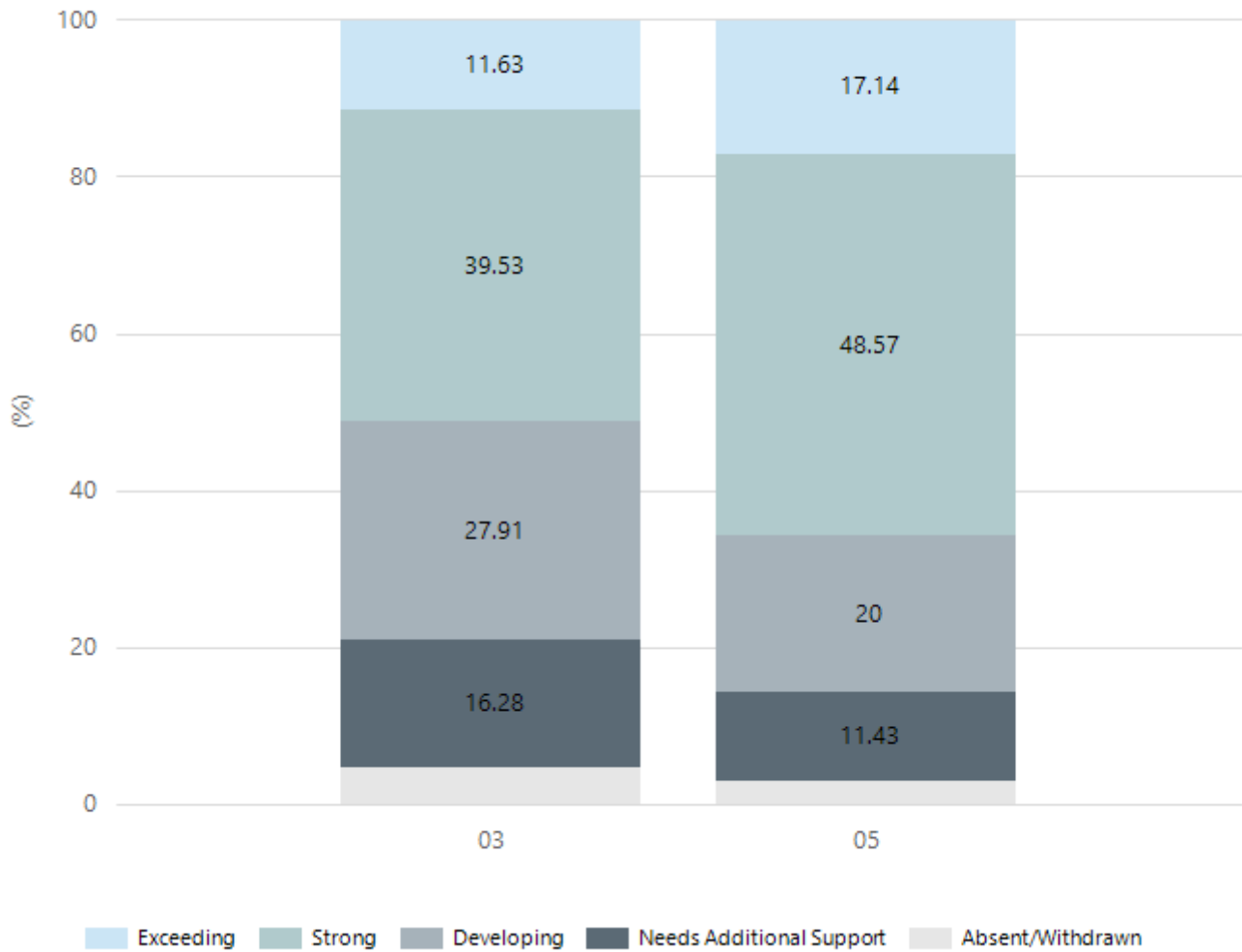
Writing



Year Level	03	05
Exceeding	4	2
Strong	29	18
Developing	7	12
Needs Additional Support	1	3
Absent/Withdrawn	2	
Total	43	35

Data Source: Department for Education Assessment Data Holdings, 2025. If there are less than 6 students who sat NAPLAN in a school, no information will be shown. If a year level has less than 6 students, that year level will not be shown in NAPLAN results.

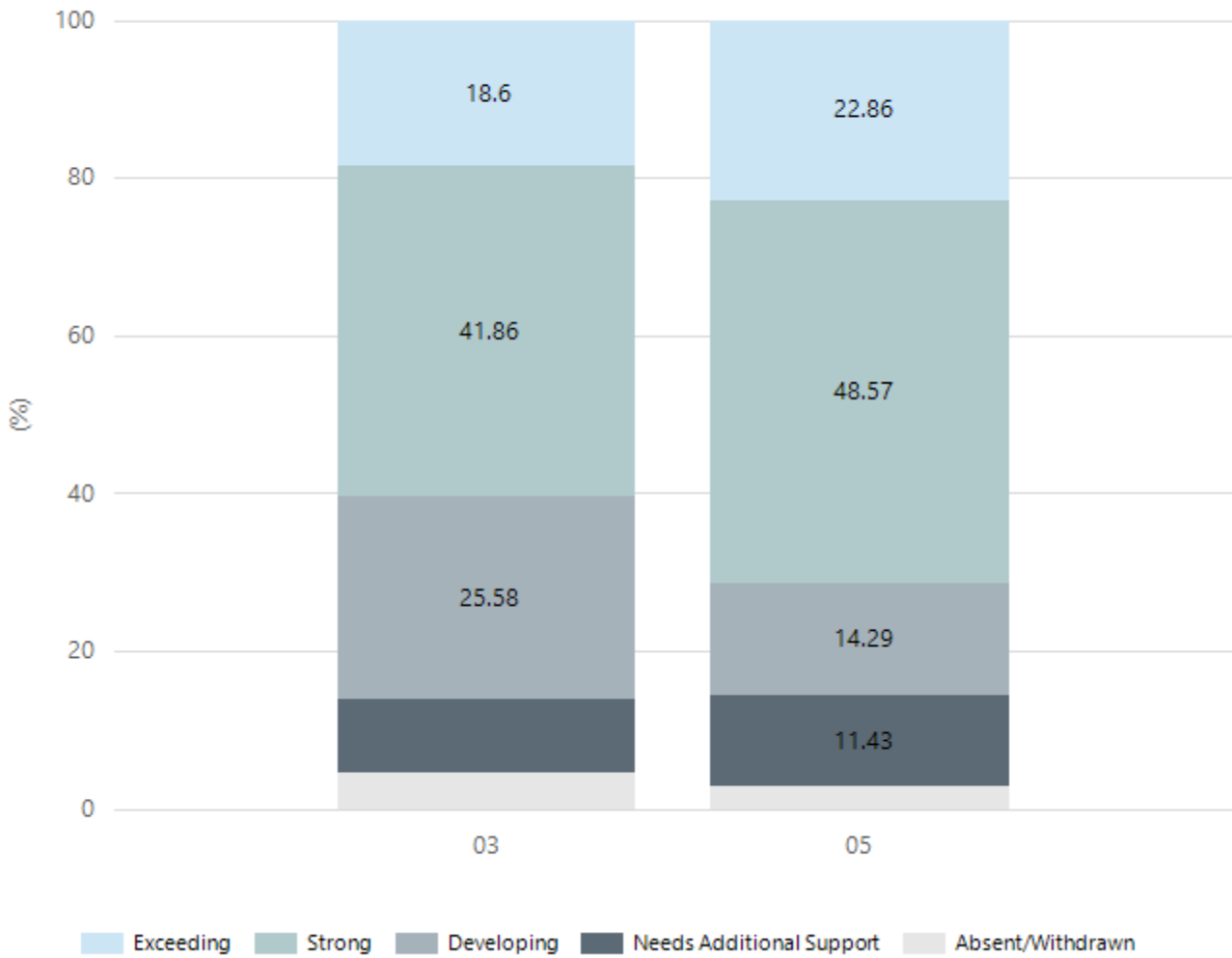
Grammar



Year Level	03	05
Exceeding	5	6
Strong	17	17
Developing	12	7
Needs Additional Support	7	4
Absent/Withdrawn	2	1
Total	43	35

Data Source: Department for Education Assessment Data Holdings, 2025. If there are less than 6 students who sat NAPLAN in a school, no information will be shown. If a year level has less than 6 students, that year level will not be shown in NAPLAN results.

Spelling

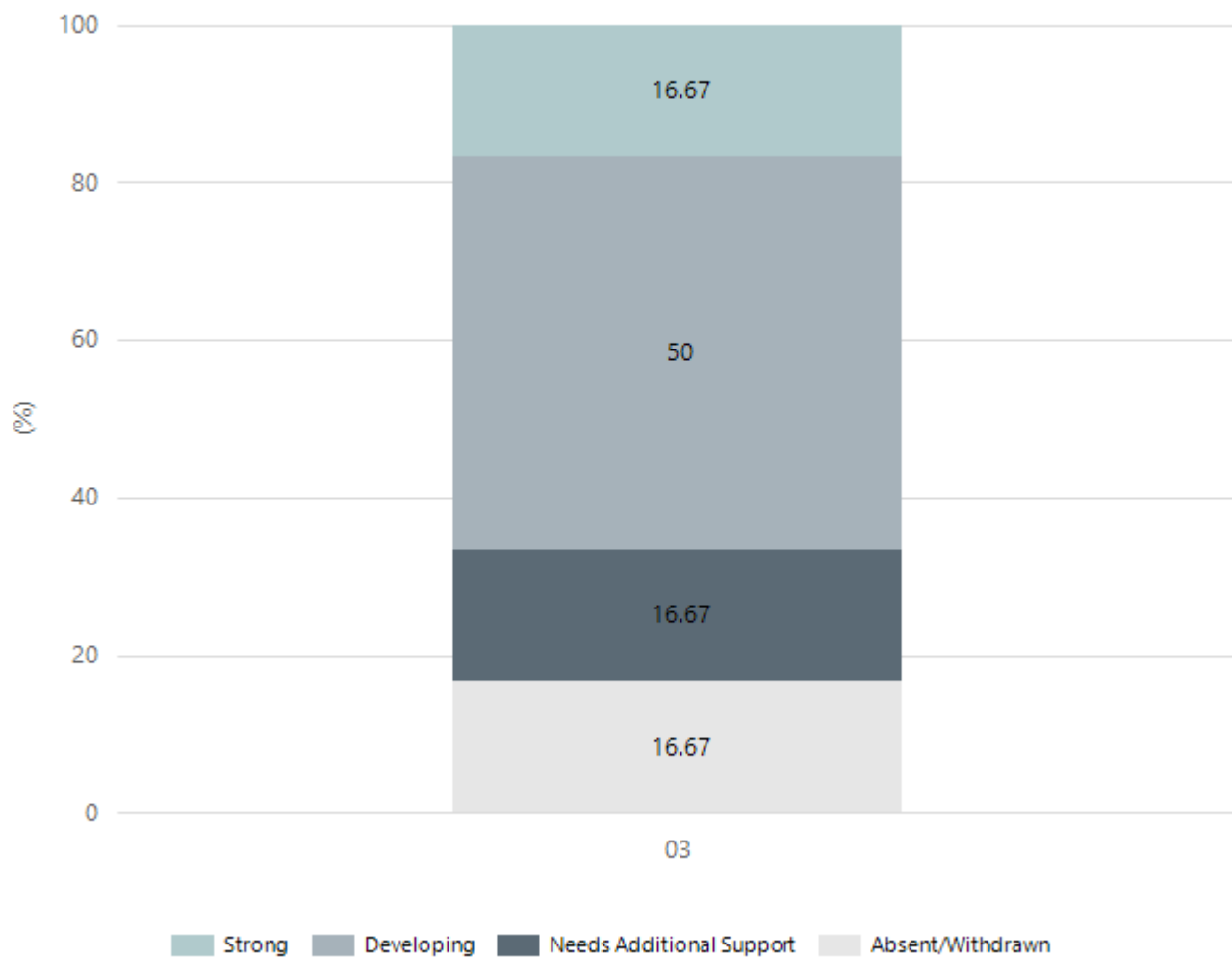


Year Level	03	05
Exceeding	8	8
Strong	18	17
Developing	11	5
Needs Additional Support	4	4
Absent/Withdrawn	2	1
Total	43	35

Data Source: Department for Education Assessment Data Holdings, 2025. If there are less than 6 students who sat NAPLAN in a school, no information will be shown. If a year level has less than 6 students, that year level will not be shown in NAPLAN results.

NAPLAN Proficiency - Aboriginal Learners

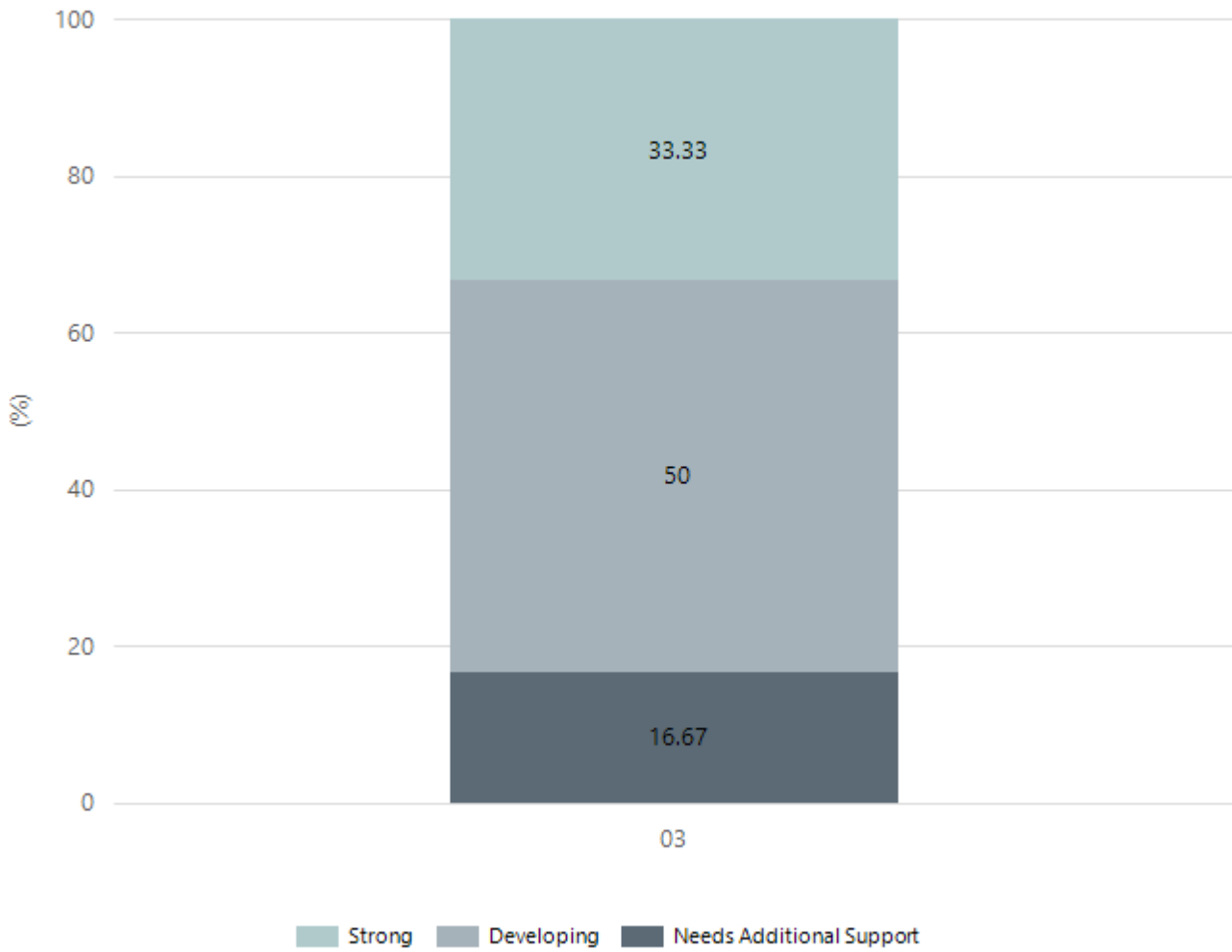
Numeracy



Year Level	03
Strong	1
Developing	3
Needs Additional Support	1
Absent/Withdrawn	1
Total	6

Data Source: Department for Education Assessment Data Holdings, 2025. If there are less than 6 students who sat NAPLAN in a school, no information will be shown. If a year level has less than 6 students, that year level will not be shown in NAPLAN results. Only data for Aboriginal learners is displayed.

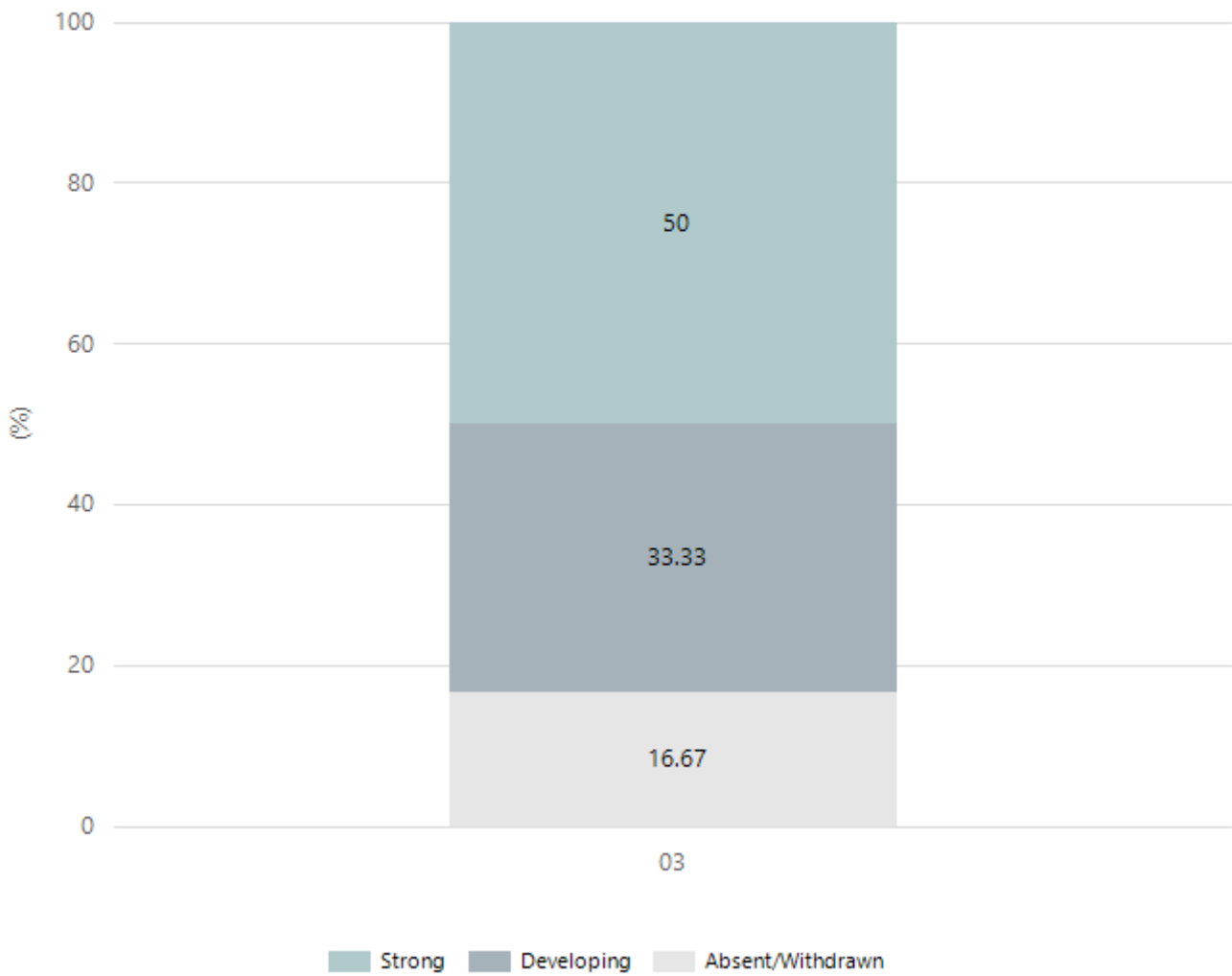
Reading



Year Level	03
Strong	2
Developing	3
Needs Additional Support	1
Total	6

Data Source: Department for Education Assessment Data Holdings, 2025. If there are less than 6 students who sat NAPLAN in a school, no information will be shown. If a year level has less than 6 students, that year level will not be shown in NAPLAN results. Only data for Aboriginal learners is displayed.

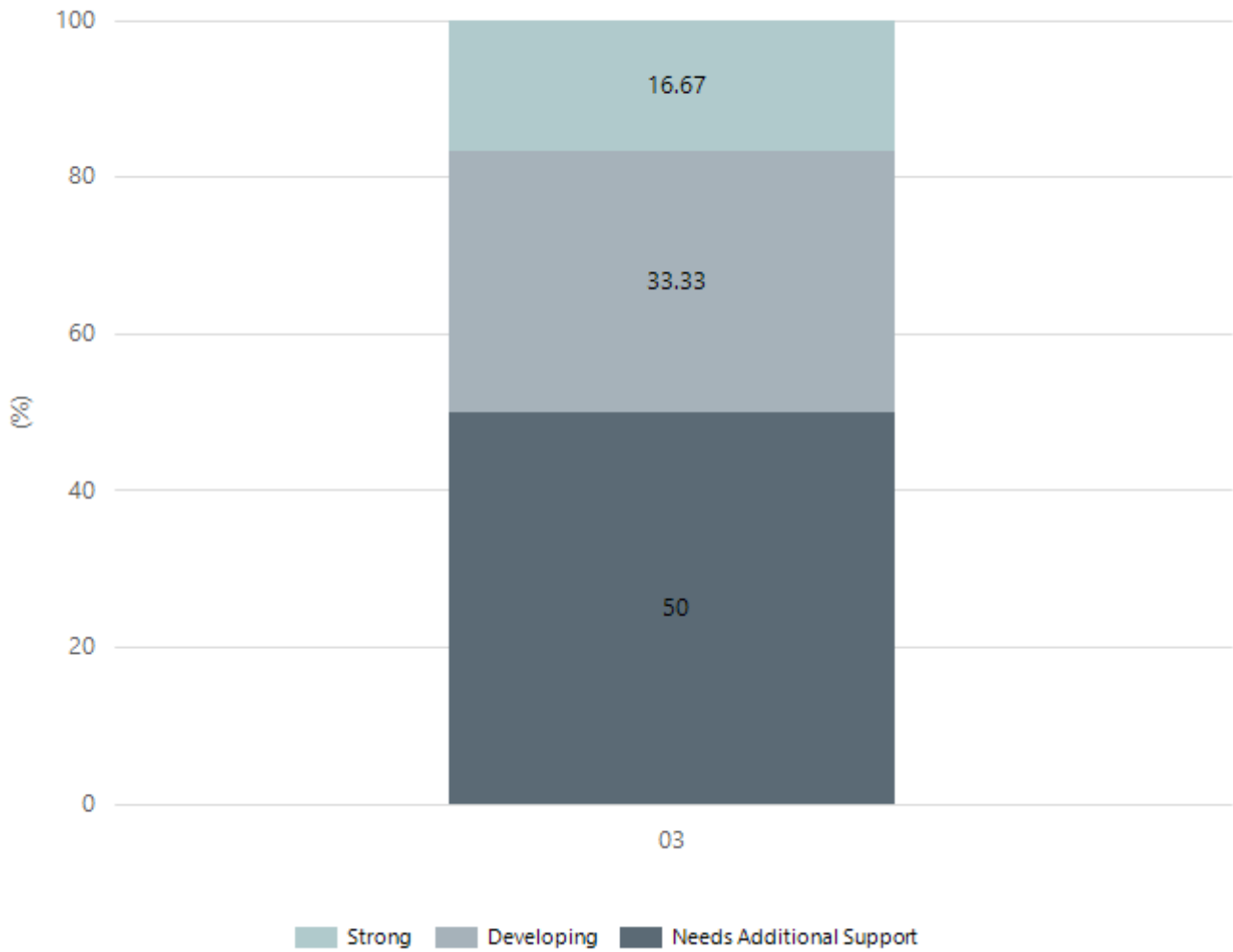
Writing



Year Level	03
Strong	3
Developing	2
Absent/Withdrawn	1
Total	6

Data Source: Department for Education Assessment Data Holdings, 2025. If there are less than 6 students who sat NAPLAN in a school, no information will be shown. If a year level has less than 6 students, that year level will not be shown in NAPLAN results. Only data for Aboriginal learners is displayed.

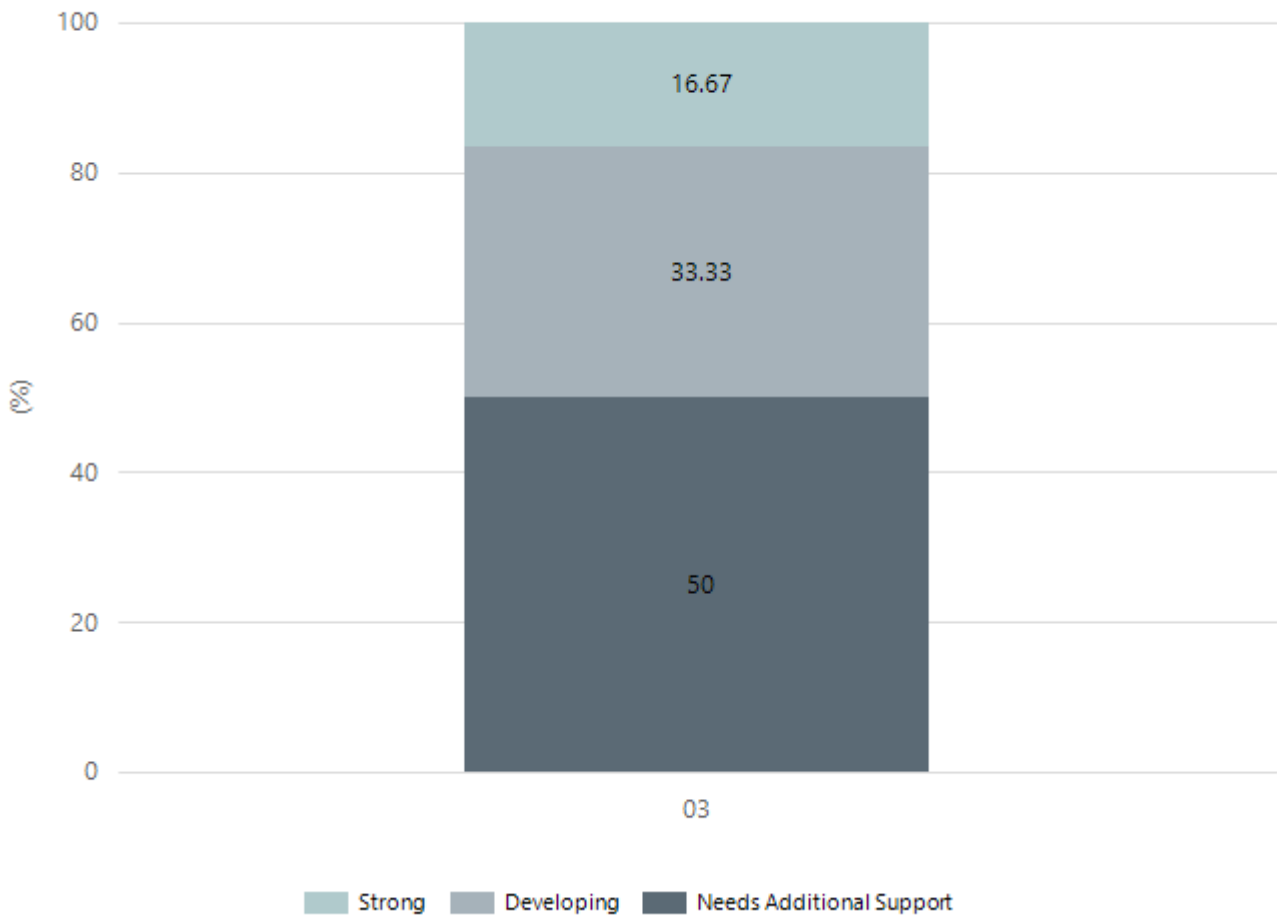
Grammar



Year Level	03
Strong	1
Developing	2
Needs Additional Support	3
Total	6

Data Source: Department for Education Assessment Data Holdings, 2025. If there are less than 6 students who sat NAPLAN in a school, no information will be shown. If a year level has less than 6 students, that year level will not be shown in NAPLAN results. Only data for Aboriginal learners is displayed.

Spelling



Year Level	03
Strong	1
Developing	2
Needs Additional Support	3
Total	6

Data Source: Department for Education Assessment Data Holdings, 2025. If there are less than 6 students who sat NAPLAN in a school, no information will be shown. If a year level has less than 6 students, that year level will not be shown in NAPLAN results. Only data for Aboriginal learners is displayed.

Preschool Attendance

	Term 1	Term 3
2022 centre	80.8%	81%
2023 centre	83.3%	88.9%
2024 centre	85.5%	78.2%
2025 centre	78.2%	81.6%

Based on preschool sessions attended during a two-week reference period in Term 1 and Term 3. The table represents the proportion of hours attended out of total hours enrolled (booked). Data Source: Department for Education attendance data.

School Attendance

Year Level	2023	2024	2025
Reception	89.9%	89.5%	85.7%
Year 01	84.2%	89.7%	89.2%
Year 02	85.0%	89.0%	91.2%
Year 03	89.4%	88.8%	86.2%
Year 04	86.8%	84.8%	86.3%
Year 05	85.7%	87.5%	88.2%
Year 06	89.2%	90.4%	89.6%
Year 07	100.0%		
Total	87.1%	88.5%	88.1%

Data Source: Department for Education Attendance Data, Semester 1 Report 2025. A blank cell indicates there were no students enrolled. 'Primary Other' includes students enrolled in specialised education options. 'Secondary Other' includes students who have already spent a year at Year 12 and elected to undertake further study at Year 12.

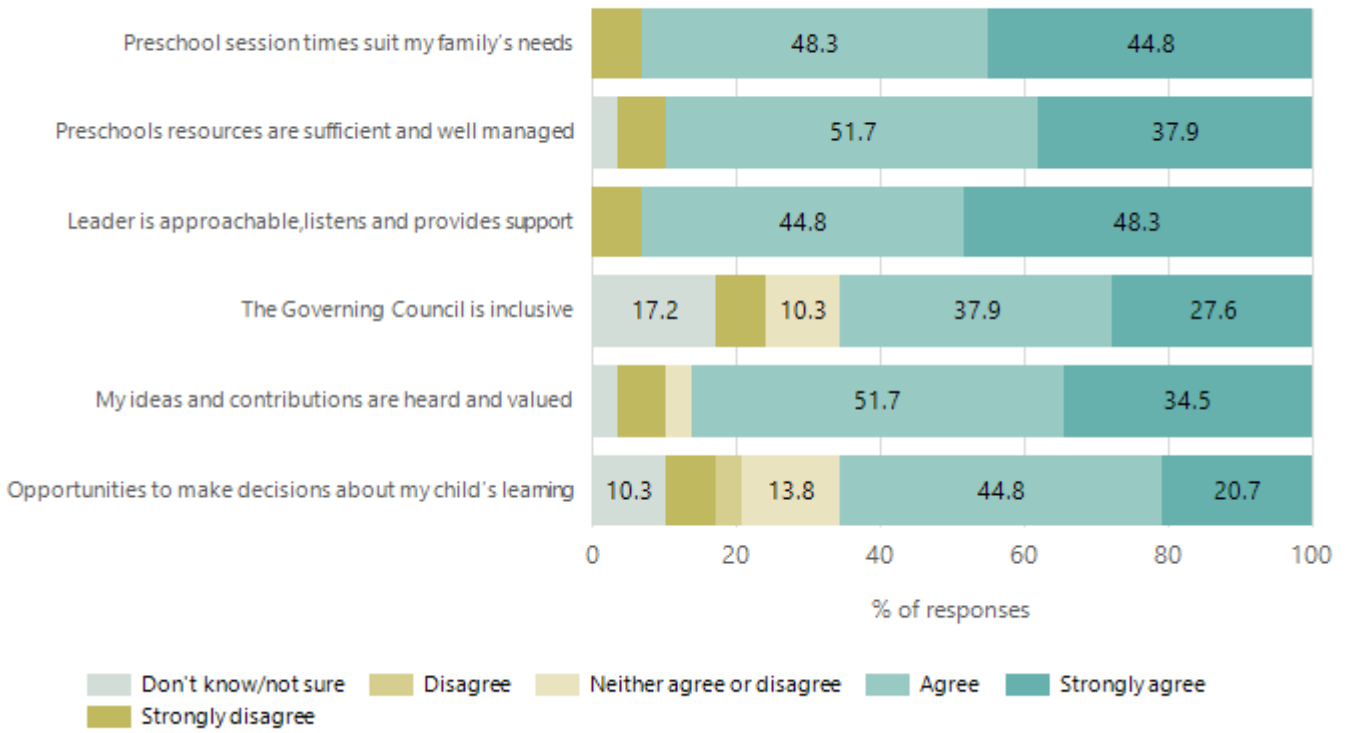
Attendance Comment

In South Australia, preschool attendance is not compulsory, but it is strongly encouraged. Preschool gives children the best opportunity to develop skills, which prepare them for school. These benefits include establishing positive routines and habits, friendships and connections as well as developing communication, problem-solving and creative skills.

In South Australia, all children and young people must be in school from 6 years to 16 years old. They must attend a government or non-government school full time. From age 16 to 17 however, young people must attend school or an approved learning program (such as an apprenticeship, traineeship, accredited course or university). Schools and parents must encourage and support students to come to school every day. Parents and caregivers must make sure their child is enrolled in a school, and attends school all day and everyday it is open, unless a child is sick or has an approved exemption. Teachers and leaders actively follow up when a student misses school, including recording all absences and non-attendance. All schools in South Australia have local attendance procedures governed under the Education and Children's Services Regulations 2020.

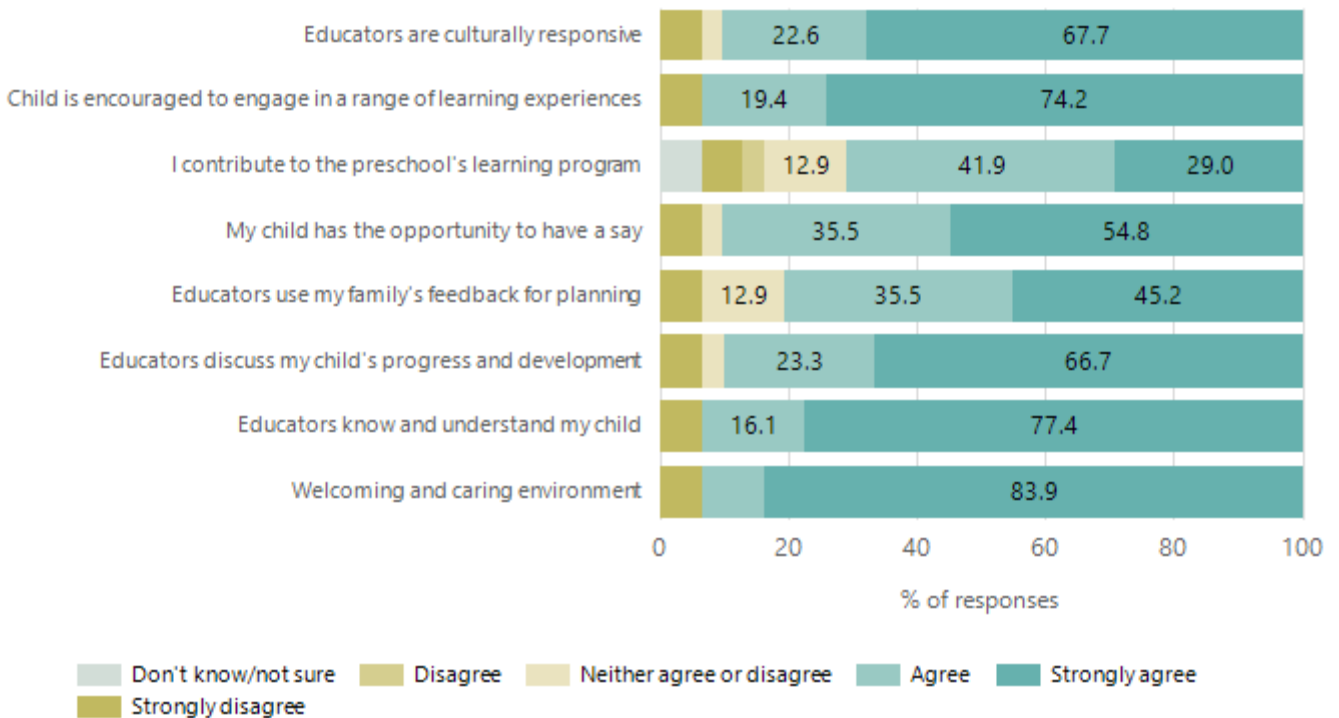
Preschool Family Opinion Survey

Governance, Leadership and Management

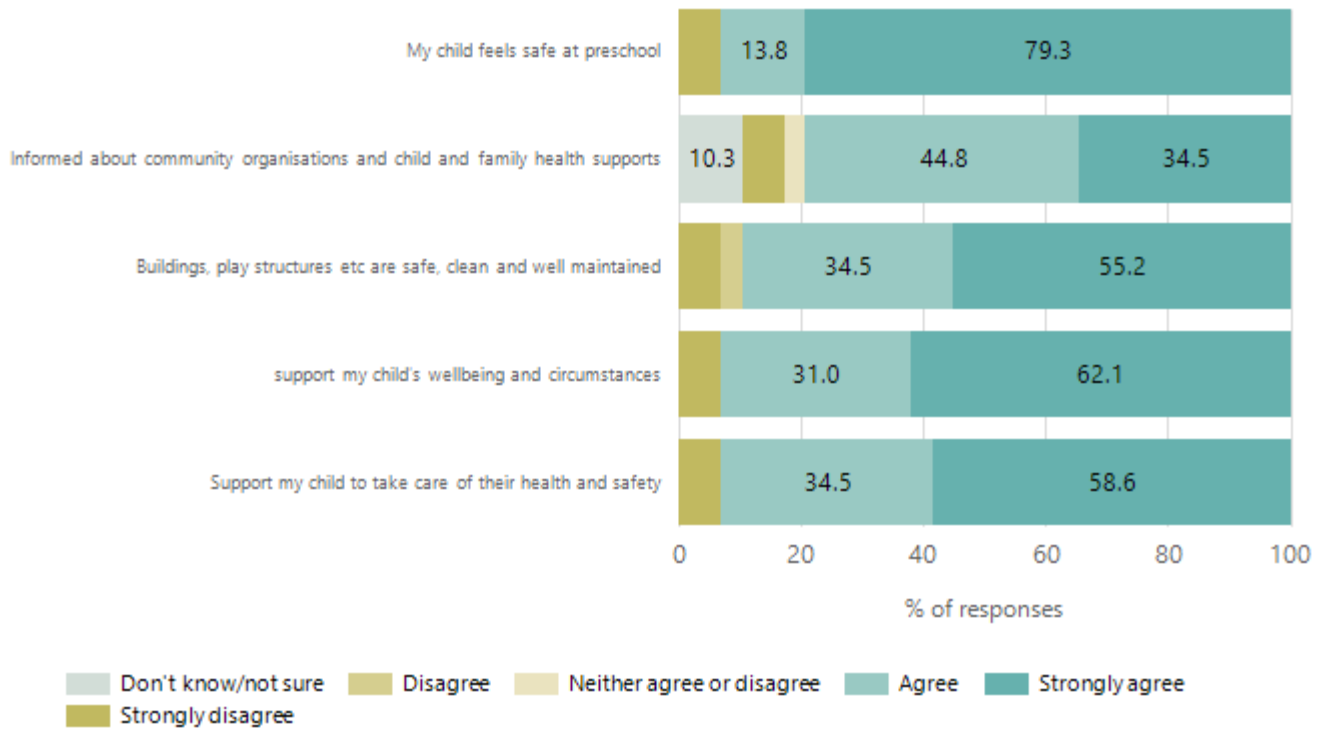


Data Source: 2025 Department for Education Preschool Family Opinions Survey, Term 3 2025.

Quality of Teaching and Learning

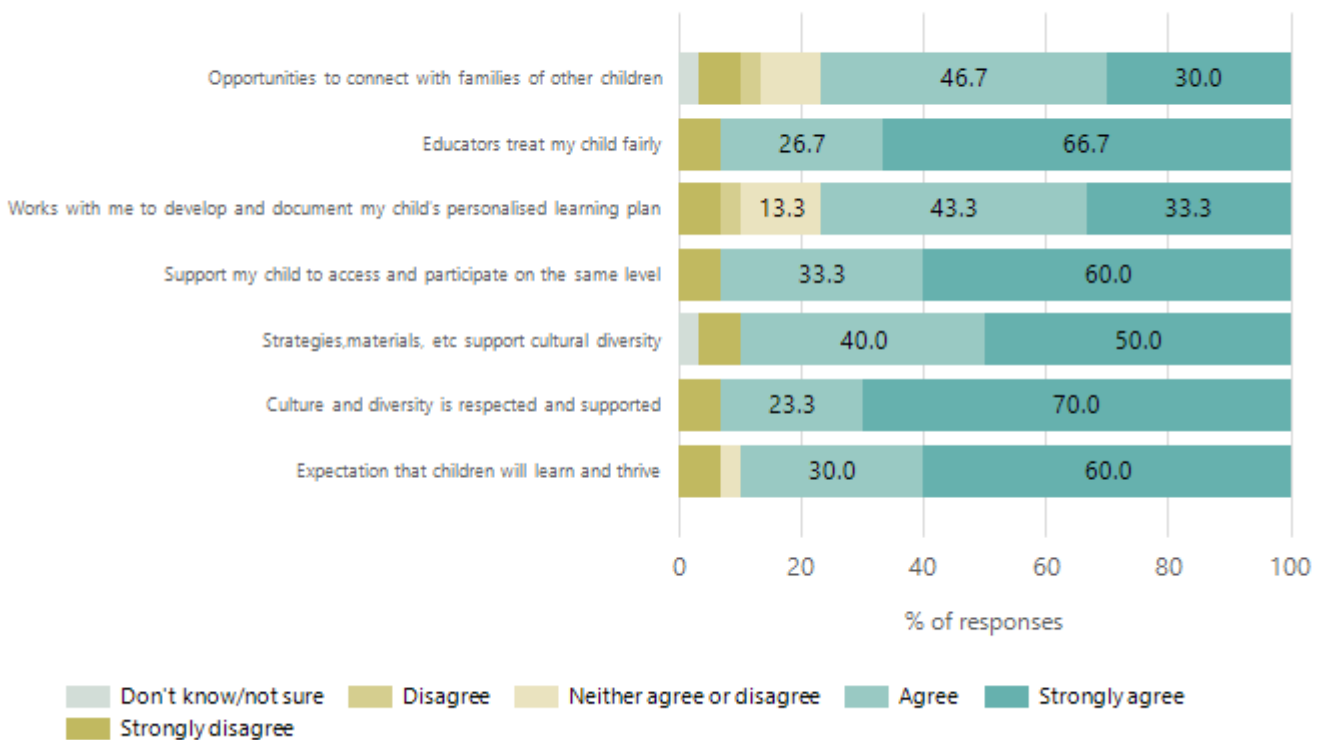


Safety, Health and Wellbeing



Data Source: 2025 Department for Education Preschool Family Opinions Survey, Term 3 2025.

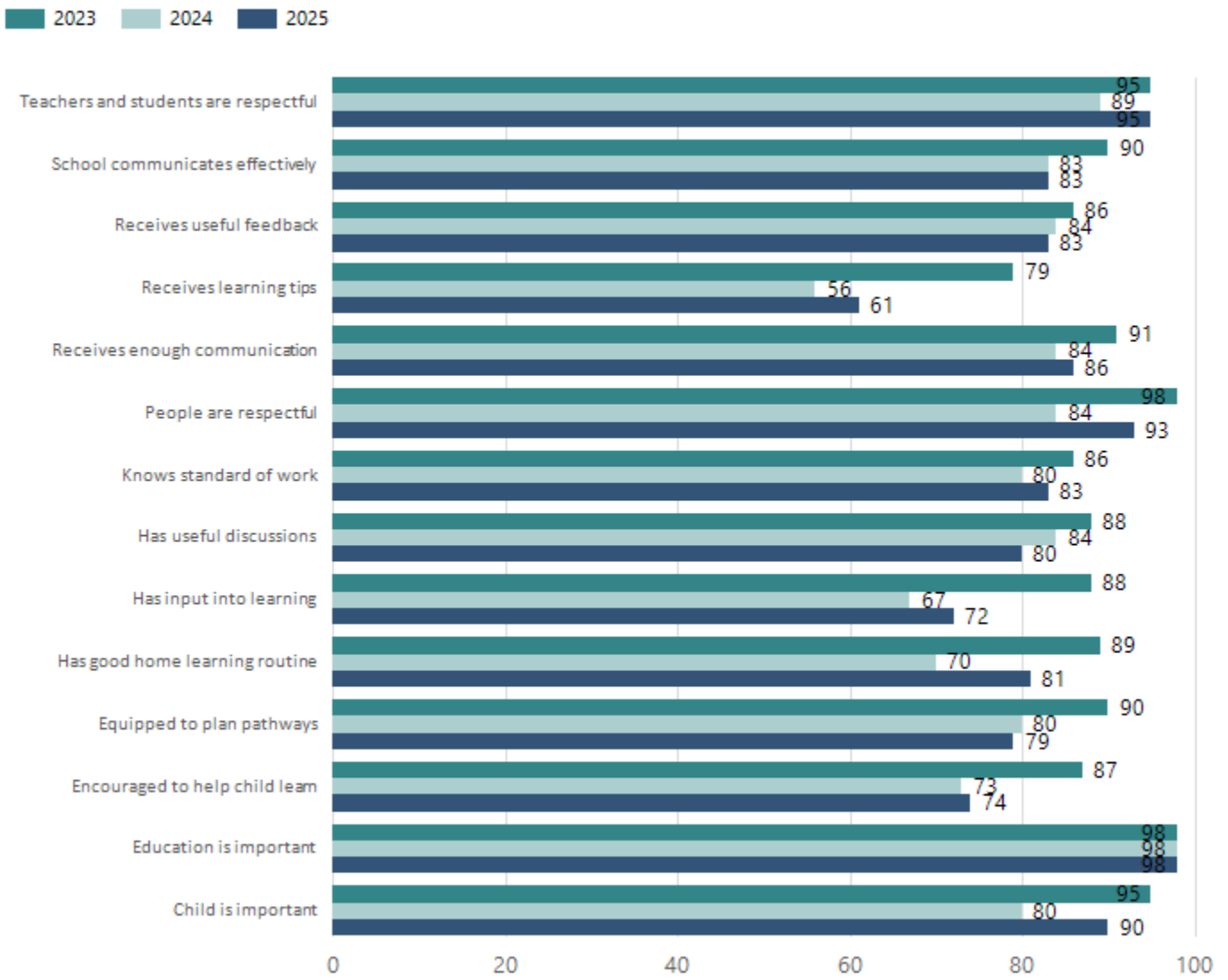
Support and Inclusion



Data Source: 2025 Department for Education Preschool Family Opinions Survey, Term 3 2025.

School Parent Opinion Survey Results

Proportion of agree/strongly agree response(%)



Data Source: 2025 Department for Education Parent Opinions Survey, Term 3 2025.

Destination Schools

Feeder Schools (Site number - Name)	2023	2024	2025
0314 - Northfield Primary School	61.9%	48.9%	38.9%
0665 - Hillcrest Primary School	7.1%	5.6%	4.2%
8032 - Cedar College	3.6%		
9031 - St Martin's Catholic Primary School	4.8%	10.0%	4.2%
9999 - Unknown	14.3%	27.8%	43.1%

Note: The data is collected in term 3. It does not reflect actual schools enrolled in by existing preschool children. A blank cell indicates there was no data for students enrolled.

Data Source: Department for Education Destination Data Report, 2025.

Intended Destination

Leave Reason	Number	%
IS - INTERSTATE	8	20.0%
NG - ATTENDING NON-GOV SCHOOL IN SA	12	30.0%
OV - LEFT SA FOR OVERSEAS	2	5.0%
TG - TRANSFERRED TO SA GOVERNMENT SCHOOL	15	38.0%
U - UNKNOWN	3	8.0%

Data Source: Department for Education Destination Data Report, 2025. Data extract term 3 2025. Data shows recorded destinations for students that left the school in the previous year. Data is uploaded by schools in term 3 and may not reflect final or total figures at time of report creation.

Highest Qualifications held by the teaching workforce and workforce composition

All teachers at this school are qualified and registered with the SA Teachers Registration Board.

Qualification Level	Number of Qualifications
Bachelor's degrees or Diplomas	19
Postgraduate Qualifications	11

Data Source: Data extracted from Mandatory Workforce Information Collections as on the last pay date of June 2025. As self-reported by staff in the system.

Please note: Data includes staff who are Actively employed and on extended paid leave. Please note only the highest qualification of the Teaching staff is reported. Excludes any number of other certifications earned.

Workforce composition including indigenous staff

	Teaching Staff		Non-Teaching Staff	
	Indigenous	Non-Indigenous	Indigenous	Non-Indigenous
Full-Time Equivalents	1.0	25.4	0.3	18.9
Persons	1.0	29.0	1.0	27.0

Data Source: Data extracted from Mandatory Workforce Information Collection as on the last pay date of June 2025.

Please note: Data includes staff who are actively employed and on extended paid leave. "Indigenous category" is self-reported by staff in the system.

Financial Statement

Funding Source	Amount
Grants: State	\$5,899,901.00
Grants: Commonwealth	\$0
Parent Contributions	\$101,450
Fund Raising	\$4,924.56
Other	\$12,121.56

Fundraising = Sportsday (donuts), zooper doopers,

Other = staff management recoveries

Data Source: School supplied data.

