

2024 annual report to the Community

# Reynella East College and Reynella East Preschool

Reynella East College number: 1907

Reynella East Preschool number: 1655

Partnership: Panalatinga



School principal:

Warren Symonds

Signature

Date of endorsement:

29/01/2025



# Context Statement

Reynella East College caters for students from P-12. At the time of this report, the enrolment in 2024 is 1943. Reynella East College classified as Category 5 on the Department for Education Index of Educational Disadvantage. At the time of this report, the school population includes 3% Aboriginal students, 24% students with disabilities, 1% students with English as an additional language or dialect (EALD) funded background, 2% children/young people in care. Further information about the school is available on the school's website (including its context statement), as well as the My School website.

Information about Reynella East Preschool is available on the centres website, as well as the Australian Childrens Education and Care Quality Authority (ACECQA) website.

Data Source: Department for Education data holdings from Mid census captured in AUGUST 2024.

## Governing Council Report

### A Year of Growth and Celebration at Reynella East College

Reflecting on the achievements and highlights of 2024 at Reynella East College, it's clear that this year has been one of growth, community spirit and memorable moments. Our school community has again come together in extraordinary ways, raising vital funds, celebrating our students' achievements and enhancing the campus for future generations. As Governing Council Chairperson, I am privileged to share some of the key highlights and extend my gratitude to everyone who has contributed to making this year such a success.

### Fundraising and Community Engagement

Once again, our popular Showdown Donuts were a standout success this year. The friendly competition between the Adelaide Crows and Port Adelaide donuts was a big hit, with the Crows taking the top spot in sales. Thank you to all those who supported the fundraiser! This event, alongside our other fundraising activities, helped generate essential funds for the ongoing development of our school.

Reynella East College participated in the People First lottery for the first time. This initiative proved to be a major success, helping raise much-needed funds for campus projects that will continue to enhance the learning environment for our students. A special mention also goes to the Primary School disco, held in Term 3, which once again allowed students to create lasting memories with their friends. Our primary teachers and support staff's continued dedication to organising and overseeing such events is truly appreciated.

### Campus Improvements and Projects

2024 also saw some exciting developments around the college. One of the most visually striking changes was the addition of colourful murals in the primary school's open outdoor spaces. These vibrant artworks brighten the area and provide a creative outlet that students can appreciate and engage with daily.

In addition, we were fortunate to win a grant from the South Australian Cricket Association to upgrade the existing secondary cricket pitch and build a new one on the primary oval. This project, which also included providing cricket equipment for PE students, has already proven to be an excellent resource. For students interested in cricket and physical education, it will enhance our students' facilities and experience.

This year's new addition to our fundraising efforts was the REC beanie, which became a must-have item during the cooler months. It was fantastic to see so many students and staff sporting these colourful beanies across the campus, and the funds raised will continue to support important initiatives within the school.

### Ceremonies and Commemorations

One of the year's most important events was the Year 12 Graduation, which took place on 26 October in the Wayikuu Gym. It was an honour to present the Terry Slaughter Award to Patrick Brinkworth, a well-deserving recipient who embodies our college values. This award is a testament to the spirit of perseverance and commitment that Patrick has shown throughout his time at Reynella East College.

Another area where Reynella East College truly shines is in our commitment to acknowledging the sacrifices made by others for the freedoms we enjoy today. This year, as in previous years, our school community came together for ANZAC Day and Remembrance Day services. These solemn occasions allowed us to pay our respects to the fallen soldiers and surviving veterans of multiple wars. It is heartening to see our students engage with these moments of reflection and gratitude.

### **Student Voice and Leadership**

A highlight of this year has been the outstanding representation of our Student Voice. Our student representatives have been active and engaged in discussing key issues with the Governing Council. It is refreshing to see the leadership qualities of our students growing year by year. These students are the leaders of tomorrow, and their involvement in decision-making processes reflects the positive direction in which our school is heading.

### **Acknowledgments and Thanks**

I would like to take this opportunity to express my heartfelt thanks to Principal Warren Symonds, Deputy Principals Clayton Disley and Bob Bastian, the leadership team and all staff members for their ongoing dedication and hard work. Their commitment to mentoring and guiding our students ensures they can reach their full potential, both academically and personally.

I would also like to extend my appreciation to my fellow Governing Council members for their continued support throughout the year. Your passion for supporting Reynella East College and its community is inspiring and I look forward to working with you all in the coming years.

As we look ahead to 2025, I am excited about the opportunities and challenges that lie ahead. Together as a community we will continue to build on this year's successes and ensure that Reynella East College remains a place where students can learn, grow and thrive.

Thank you to everyone who contributed to making 2024 a successful year. Here's to another fantastic year in 2025!

### **David Pillion**

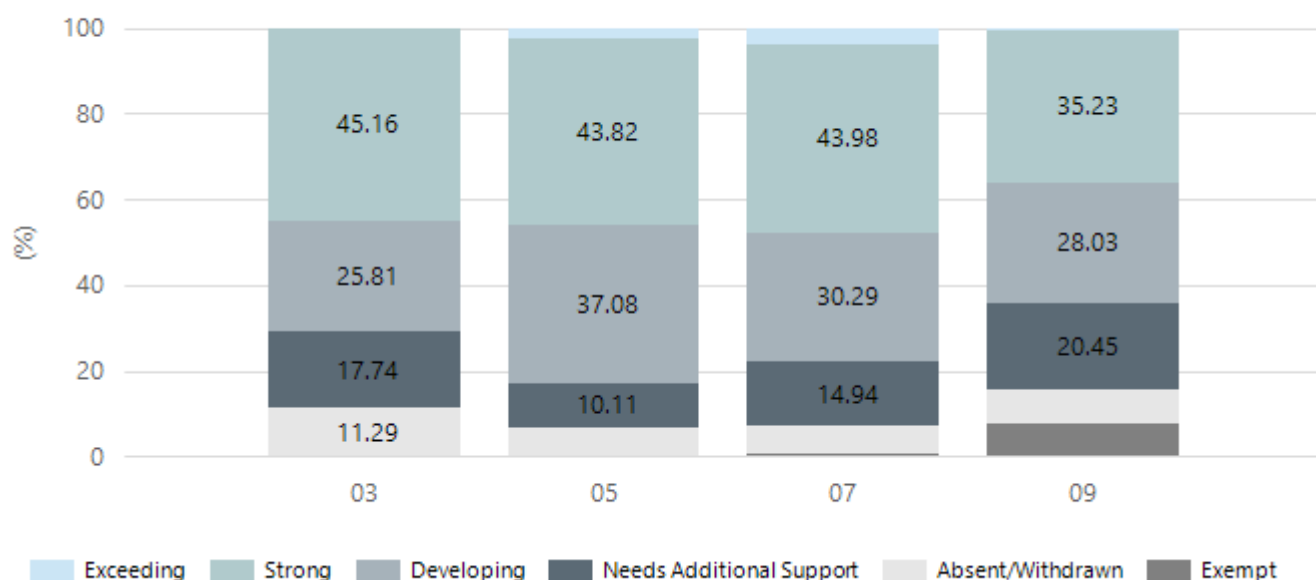
Governing Council Chairman, Reynella East College

## **Performance Summary**

### **NAPLAN Proficiency**

In 2023 the Australian Curriculum, Assessment and Reporting Authority (ACARA) - a Commonwealth Independent statutory authority - announced changes to NAPLAN performance reporting. The new approach replaces the previous numerical NAPLAN bands and the national minimum standard.

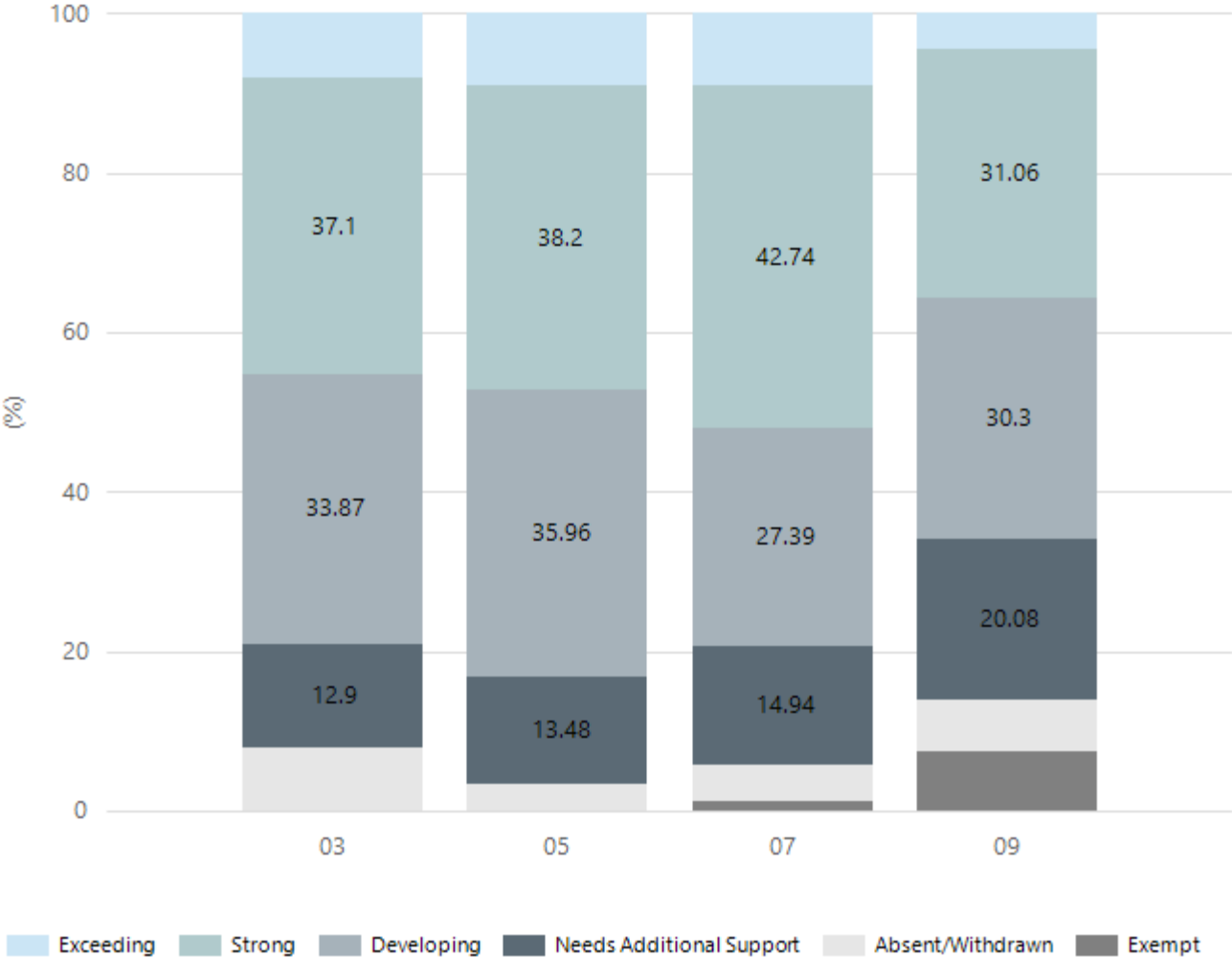
## Numeracy



Year Level	03	05	07	09
Exceeding		2	9	2
Strong	28	39	106	93
Developing	16	33	73	74
Needs Additional Support	11	9	36	54
Absent/Withdrawn	7	6	15	21
Exempt			2	20
Total	62	89	241	264

Data Source: Department for Education Assessment Data Holdings, 2024. If there are less than 6 students who sat NAPLAN in a school, no information will be shown. If a year level has less than 6 students, that year level will not be shown in NAPLAN results.

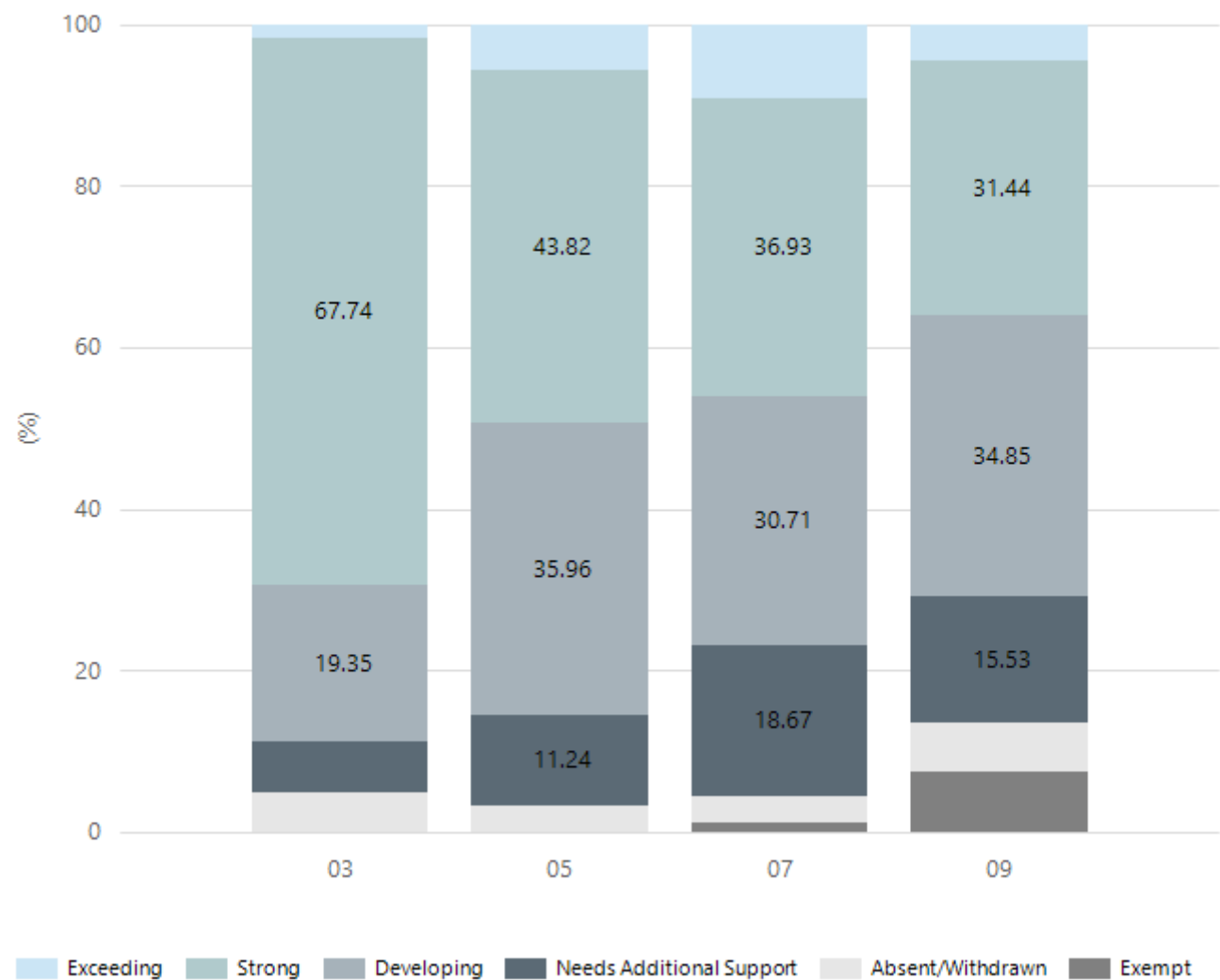
# Reading



Year Level	03	05	07	09
Exceeding	5	8	22	12
Strong	23	34	103	82
Developing	21	32	66	80
Needs Additional Support	8	12	36	53
Absent/Withdrawn	5	3	11	17
Exempt			3	20
Total	62	89	241	264

Data Source: Department for Education Assessment Data Holdings, 2024. If there are less than 6 students who sat NAPLAN in a school, no information will be shown. If a year level has less than 6 students, that year level will not be shown in NAPLAN results.

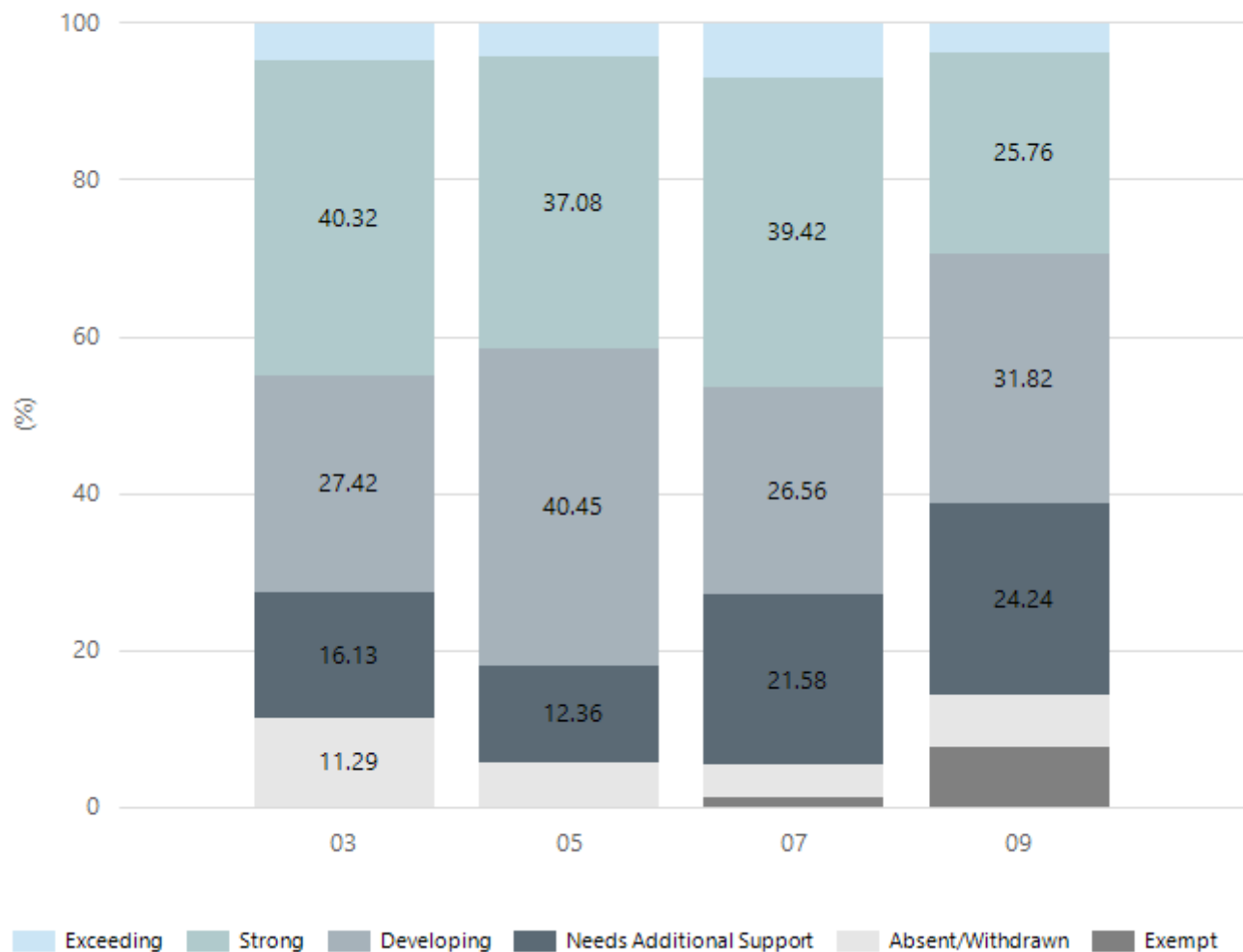
Writing



Year Level	03	05	07	09
Exceeding	1	5	22	12
Strong	42	39	89	83
Developing	12	32	74	92
Needs Additional Support	4	10	45	41
Absent/Withdrawn	3	3	8	16
Exempt			3	20
Total	62	89	241	264

Data Source: Department for Education Assessment Data Holdings, 2024. If there are less than 6 students who sat NAPLAN in a school, no information will be shown. If a year level has less than 6 students, that year level will not be shown in NAPLAN results.

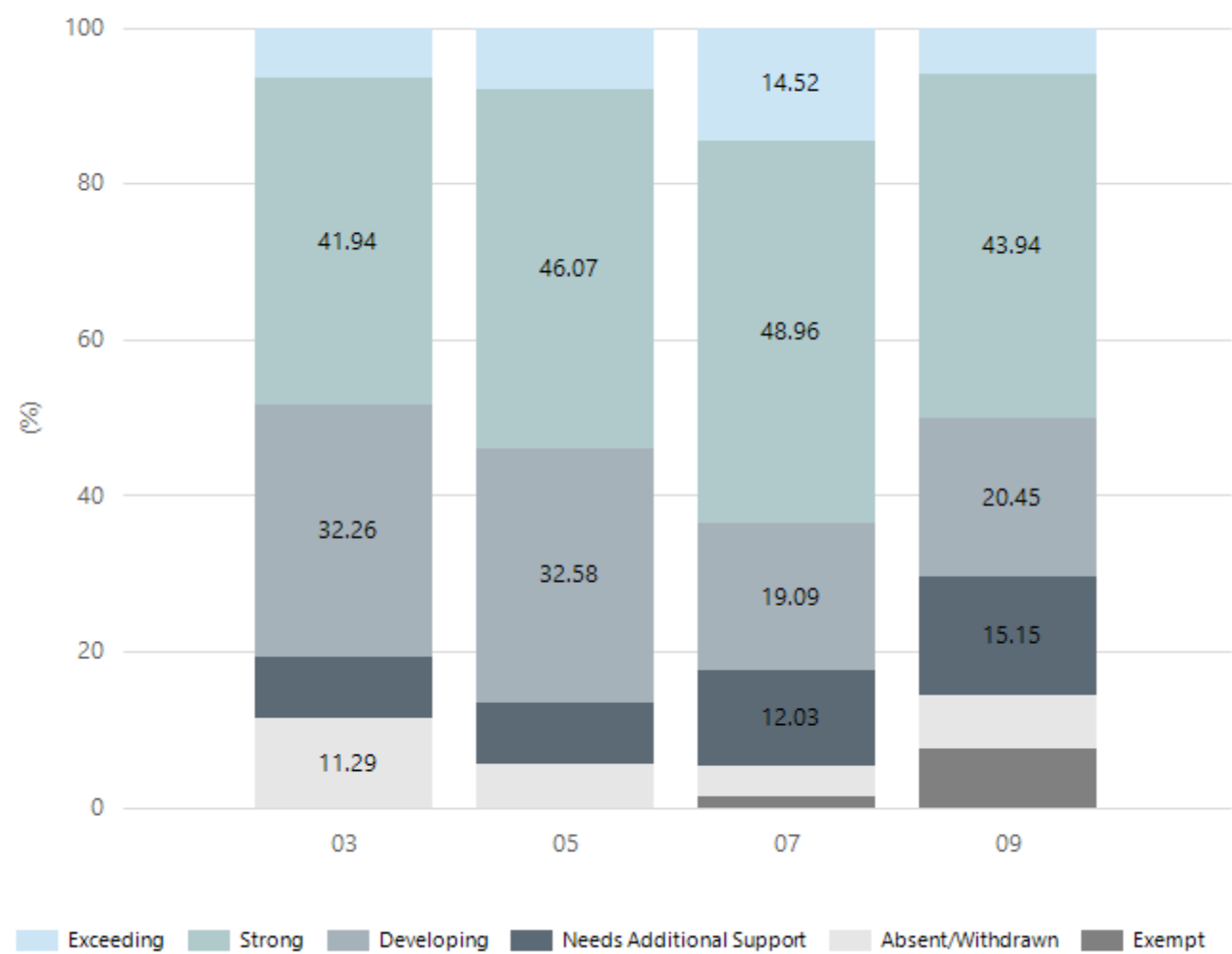
## Grammar



Year Level	03	05	07	09
Exceeding	3	4	17	10
Strong	25	33	95	68
Developing	17	36	64	84
Needs Additional Support	10	11	52	64
Absent/Withdrawn	7	5	10	18
Exempt			3	20
Total	62	89	241	264

Data Source: Department for Education Assessment Data Holdings, 2024. If there are less than 6 students who sat NAPLAN in a school, no information will be shown. If a year level has less than 6 students, that year level will not be shown in NAPLAN results.

Spelling



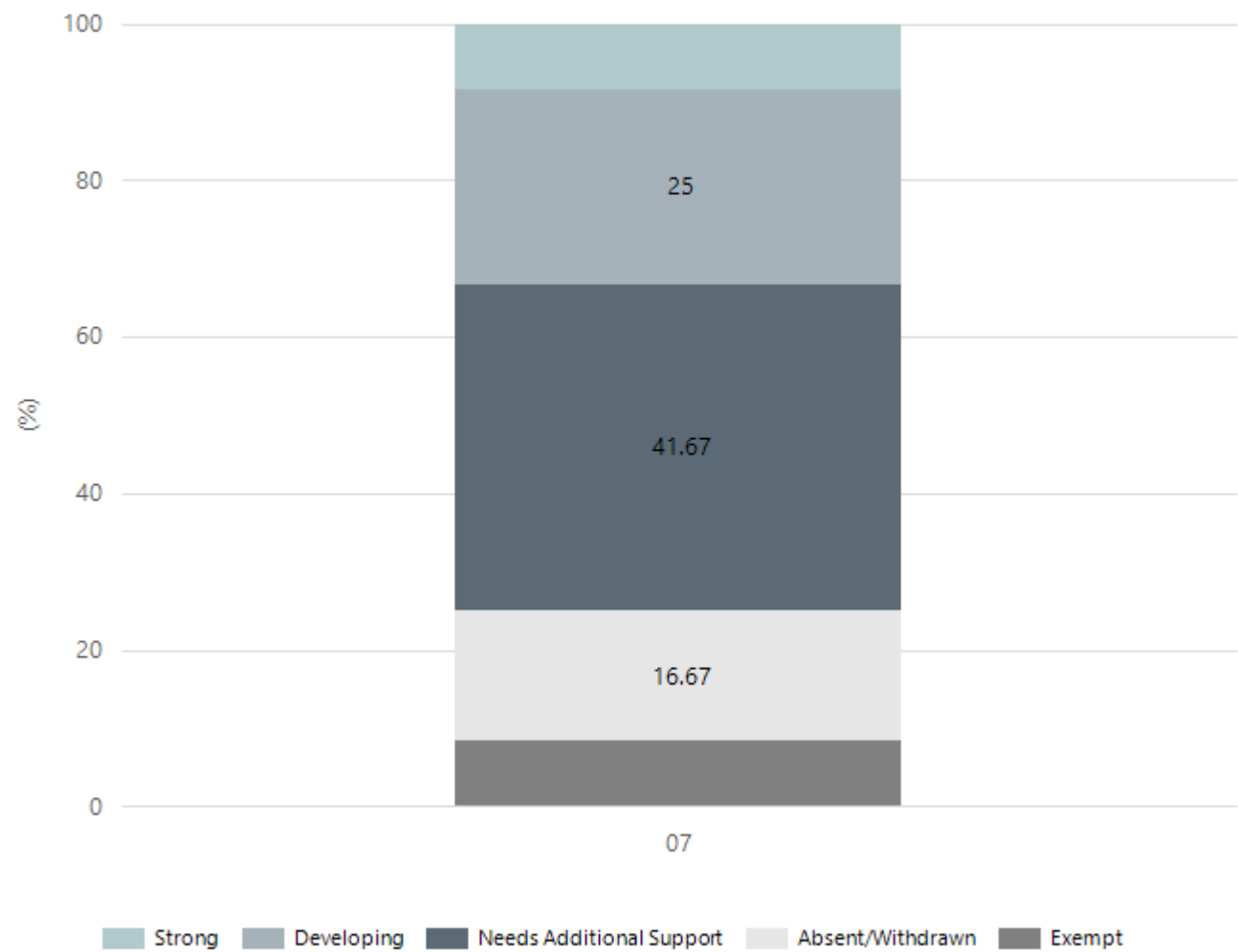
Year Level	03	05	07	09
Exceeding	4	7	35	16
Strong	26	41	118	116
Developing	20	29	46	54
Needs Additional Support	5	7	29	40
Absent/Withdrawn	7	5	10	18
Exempt			3	20
Total	62	89	241	264

Data Source: Department for Education Assessment Data Holdings, 2024. If there are less than 6 students who sat NAPLAN in a school, no information will be shown. If a year level has less than 6 students, that year level will not be shown in NAPLAN results.



# NAPLAN Proficiency - Aboriginal Learners

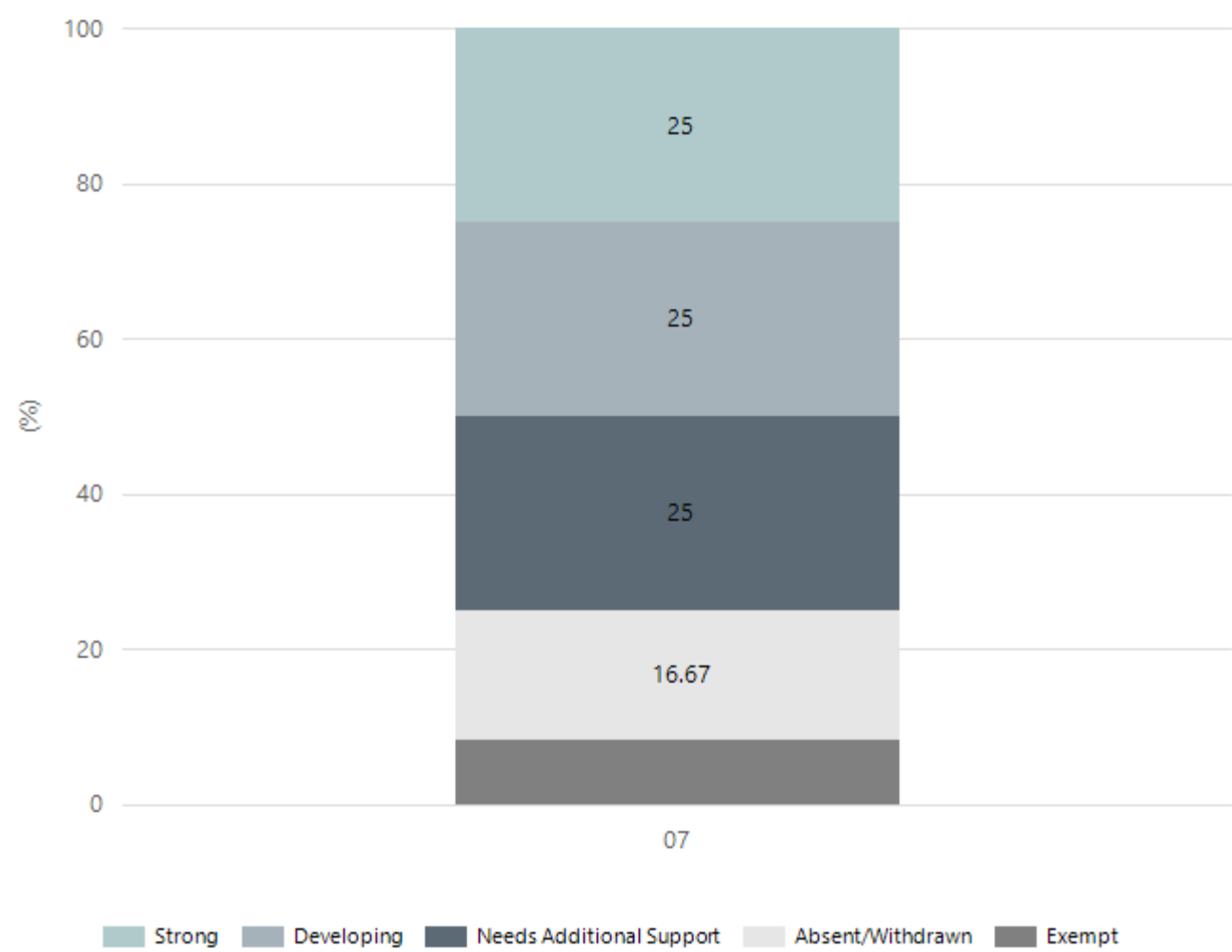
## Numeracy



Year Level	07
Strong	1
Developing	3
Needs Additional Support	5
Absent/Withdrawn	2
Exempt	1
Total	12

Data Source: Department for Education Assessment Data Holdings, 2024. If there are less than 6 students who sat NAPLAN in a school, no information will be shown. If a year level has less than 6 students, that year level will not be shown in NAPLAN results. Only data for Aboriginal learners is displayed.

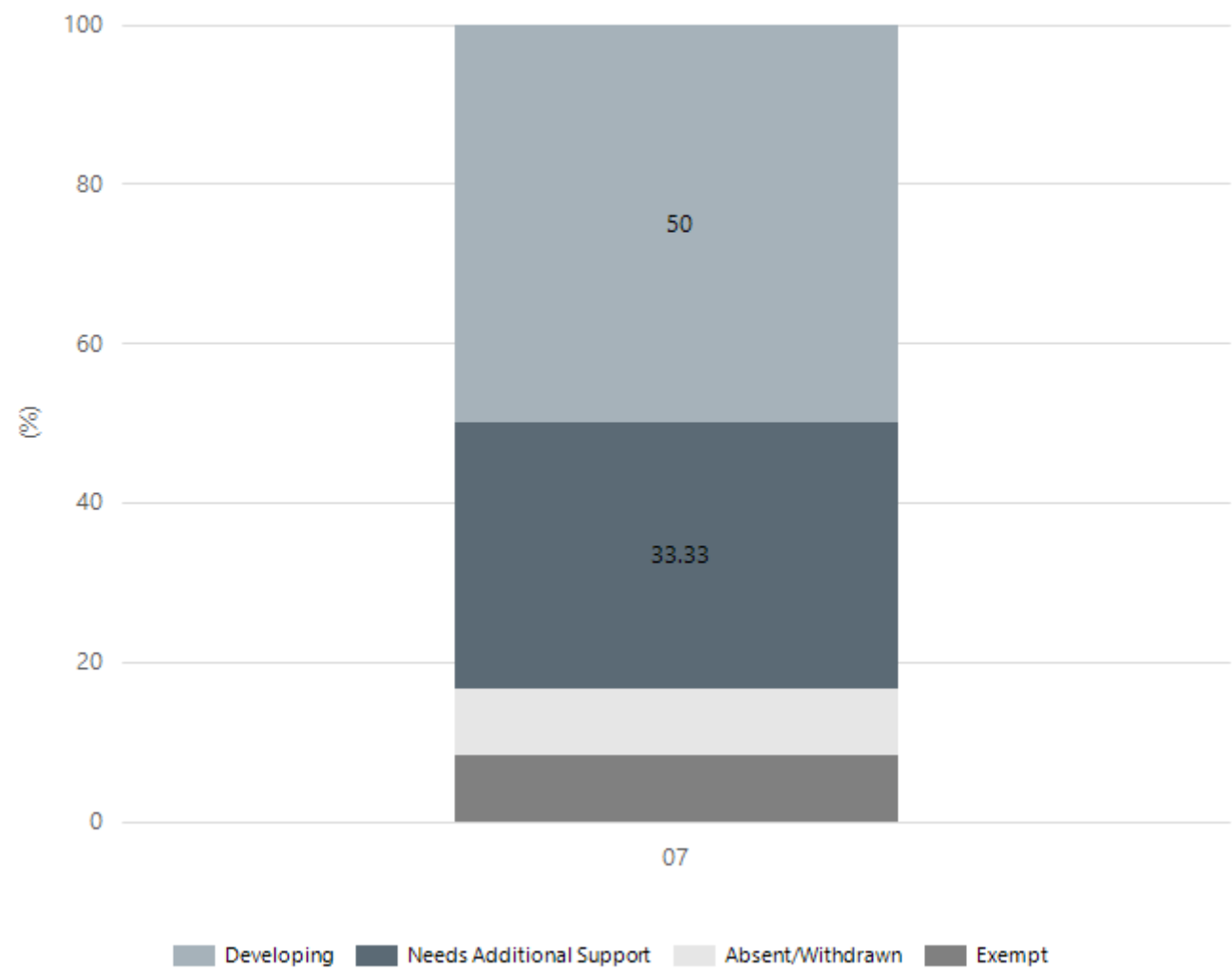
Reading



Year Level	07
Strong	3
Developing	3
Needs Additional Support	3
Absent/Withdrawn	2
Exempt	1
Total	12

Data Source: Department for Education Assessment Data Holdings, 2024. If there are less than 6 students who sat NAPLAN in a school, no information will be shown. If a year level has less than 6 students, that year level will not be shown in NAPLAN results. Only data for Aboriginal learners is displayed.

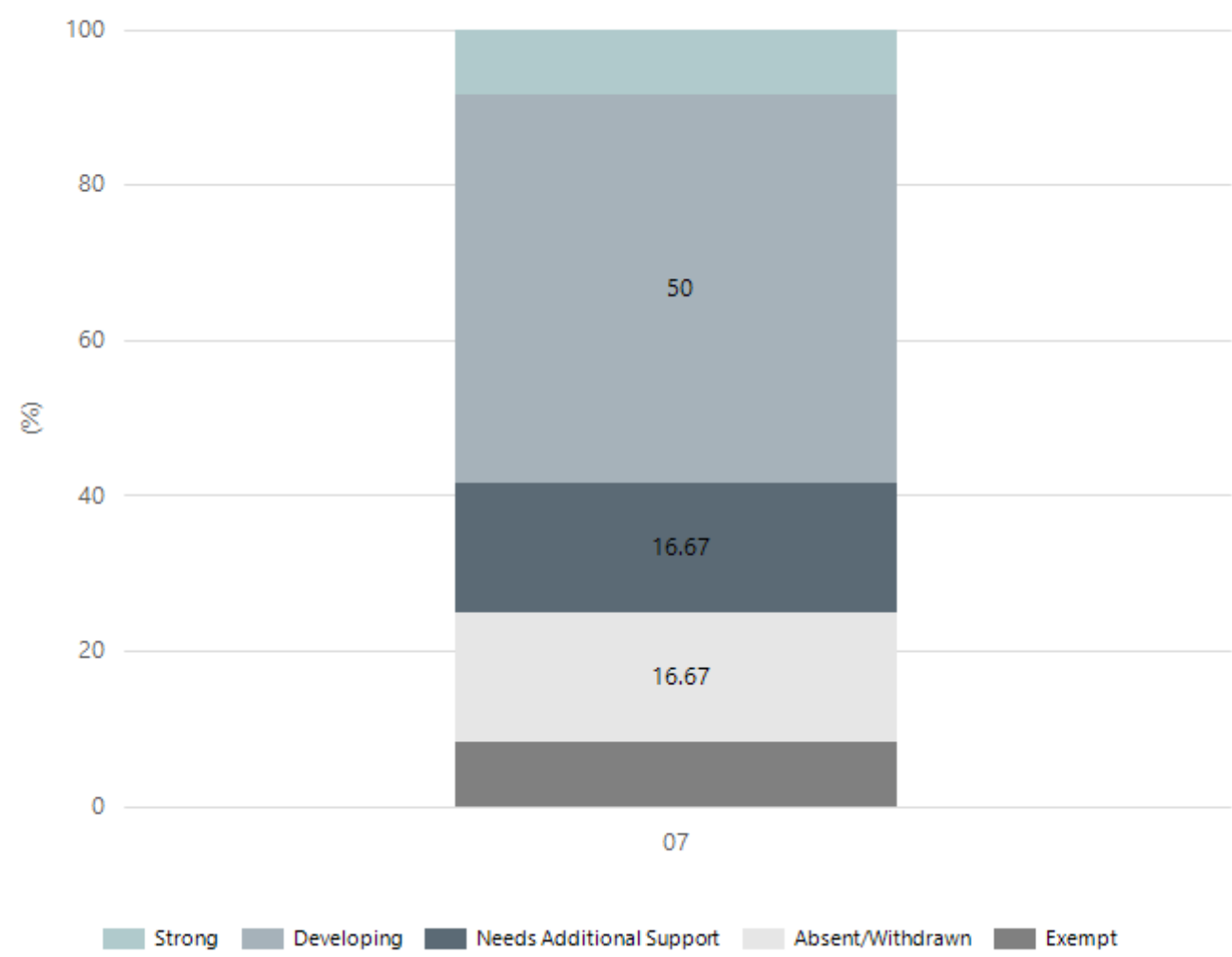
Writing



Year Level	07
Developing	6
Needs Additional Support	4
Absent/Withdrawn	1
Exempt	1
Total	12

Data Source: Department for Education Assessment Data Holdings, 2024. If there are less than 6 students who sat NAPLAN in a school, no information will be shown. If a year level has less than 6 students, that year level will not be shown in NAPLAN results. Only data for Aboriginal learners is displayed.

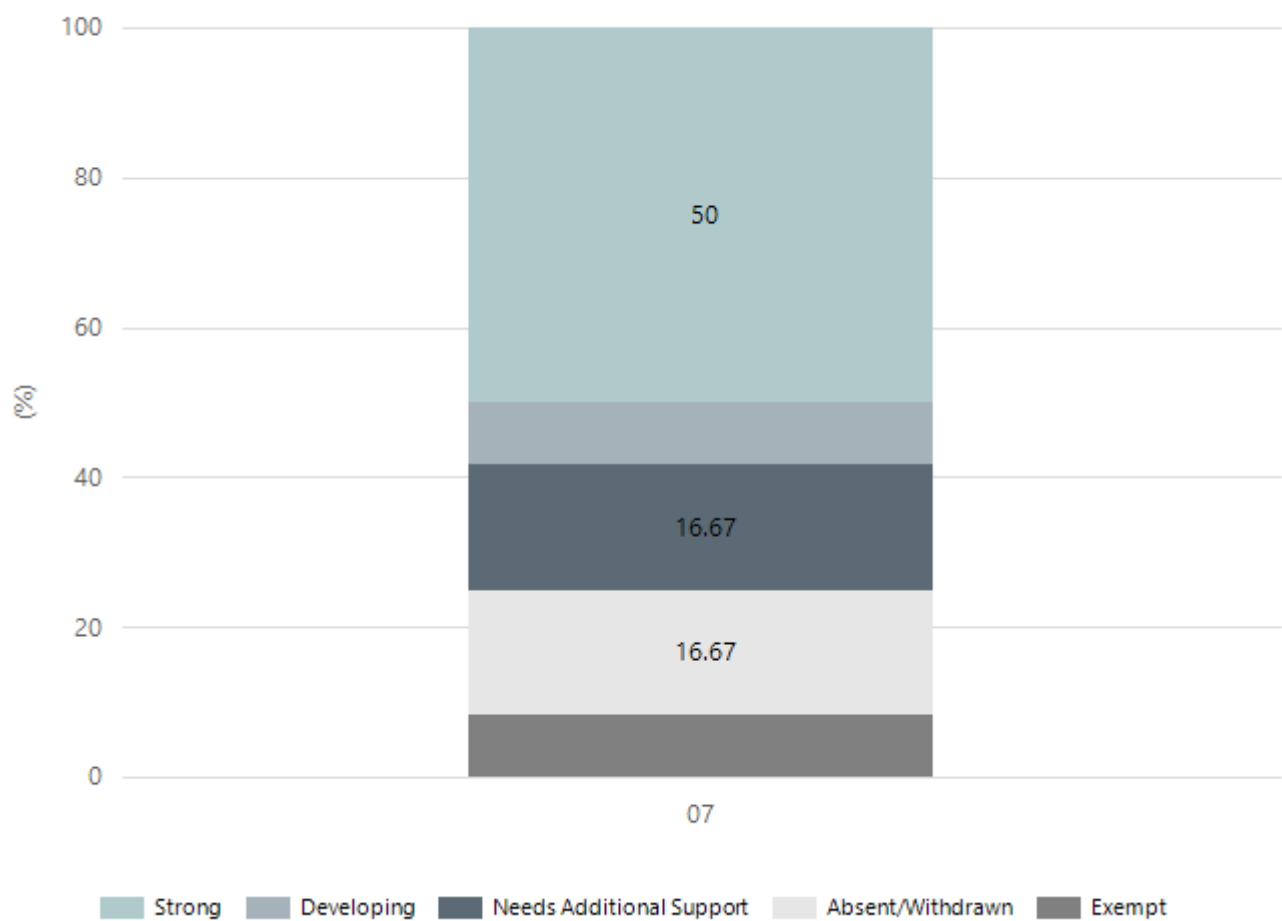
Grammar



Year Level	07
Strong	1
Developing	6
Needs Additional Support	2
Absent/Withdrawn	2
Exempt	1
Total	12

Data Source: Department for Education Assessment Data Holdings, 2024. If there are less than 6 students who sat NAPLAN in a school, no information will be shown. If a year level has less than 6 students, that year level will not be shown in NAPLAN results. Only data for Aboriginal learners is displayed.

Spelling



Year Level	07
Strong	6
Developing	1
Needs Additional Support	2
Absent/Withdrawn	2
Exempt	1
Total	12

Data Source: Department for Education Assessment Data Holdings, 2024. If there are less than 6 students who sat NAPLAN in a school, no information will be shown. If a year level has less than 6 students, that year level will not be shown in NAPLAN results. Only data for Aboriginal learners is displayed.

# South Australian Certificate of Education - SACE

## SACE Stage 2 Grades - Percentage of grades that are C- or above for attempted SACE subjects (SEA)

2021	2022	2023	2024
93%	96%	97%	95%

Data Source: SACE School Data Reports, as of February 2024 for 2021-2023. 2024 SACE results are School supplied data. When there are less than six students, no data is supplied. Due to rounding of percentages, total results may not add up to 100%.

## SACE Stage 2 Grade Distribution

Grade	2021	2022	2023	2024
A+	1%	2%	1%	1%
A	7%	6%	10%	5%
A-	11%	12%	10%	12%
B+	11%	14%	12%	11%
B	15%	13%	14%	12%
B-	14%	12%	16%	14%
C+	16%	13%	16%	16%
C	14%	17%	14%	18%
C-	6%	8%	6%	8%
D+	2%	2%	2%	2%
D	2%	1%	1%	1%
D-	1%	0%	0%	1%
E+	0%	0%	0%	1%
E	1%	0%	0%	0%
E-	0%	0%	0%	0%

Data Source: SACE School Data Reports, as of February 2024 for 2021-2023. 2024 SACE results are School supplied data. When there are less than six students, no data is supplied. Due to rounding of percentages, total results may not add up to 100%.

## SACE Completion - Percentage of completers out of those students who had the potential to complete their SACE in October that year

2021	2022	2023	2024
96%	95%	96%	95%

Data Source: SACE School Data Reports, as of February 2024 for 2021-2023. 2024 SACE results are School supplied data. When there are less than six students, no data is supplied. Due to rounding of percentages, total results may not add up to 100%.

## Year 12 Students undertaking Vocational or Trade Training (VET)

	2022	2023	2024
Percentage of Year 12 students undertaking Vocational Training or Trade Training	21%	15%	20%
Percentage of Year 12 students attaining a Year 12 certificate or equivalent VET qualification	34%	25%	34%

Data Source: School supplied data

## Preschool Attendance

	Term 1	Term 2	Term 3	Term 4
2021 centre	88.8%	89.7%	91.5%	89.4%
2022 centre	94.3%	88.8%	89.6%	93.2%
2023 centre	92%	93.2%	92.2%	89.4%
2024 centre	94.9%	82.7%	82.7%	89.9%

Based on attendances recorded in the two-week reference period each term. Data for eligible enrolments as described in the department's Enrolment policy. Attendance rates may differ to previous reporting with the transfer from calculations based on deemed attendance to actual attendance using booked hours divided by attended hours. Data Source: Department for Education Attendance Data, Semester 1 Report 2024. A blank cell indicates there were no students enrolled.

## School Attendance

Year Level	2022	2023	2024
Reception	89.8%	92.3%	92.4%
Year 01	90.2%	87.5%	90.9%
Year 02	88.4%	90.0%	87.4%
Year 03	91.6%	89.8%	89.2%
Year 04	88.6%	92.1%	87.5%
Year 05	86.5%	90.4%	91.2%
Year 06	88.1%	89.0%	88.5%
Year 07	87.6%	88.5%	86.2%
Year 08	83.7%	85.4%	85.8%
Year 09	85.3%	82.6%	84.3%
Year 10	84.8%	85.7%	86.0%
Year 11	87.3%	86.9%	89.1%
Year 12	84.4%	84.6%	90.1%
Secondary Other	74.6%	83.4%	77.6%
Total	86.3%	86.7%	87.3%

Data Source: Department for Education Attendance Data, Semester 1 Report 2024. A blank cell indicates there we no students enrolled. 'Primary Other' includes students enrolled in specialised education options. 'Secondary Other' includes students who have already spent a year at Year 12 and elected to undertake further study at Year 12.

## Attendance Comment

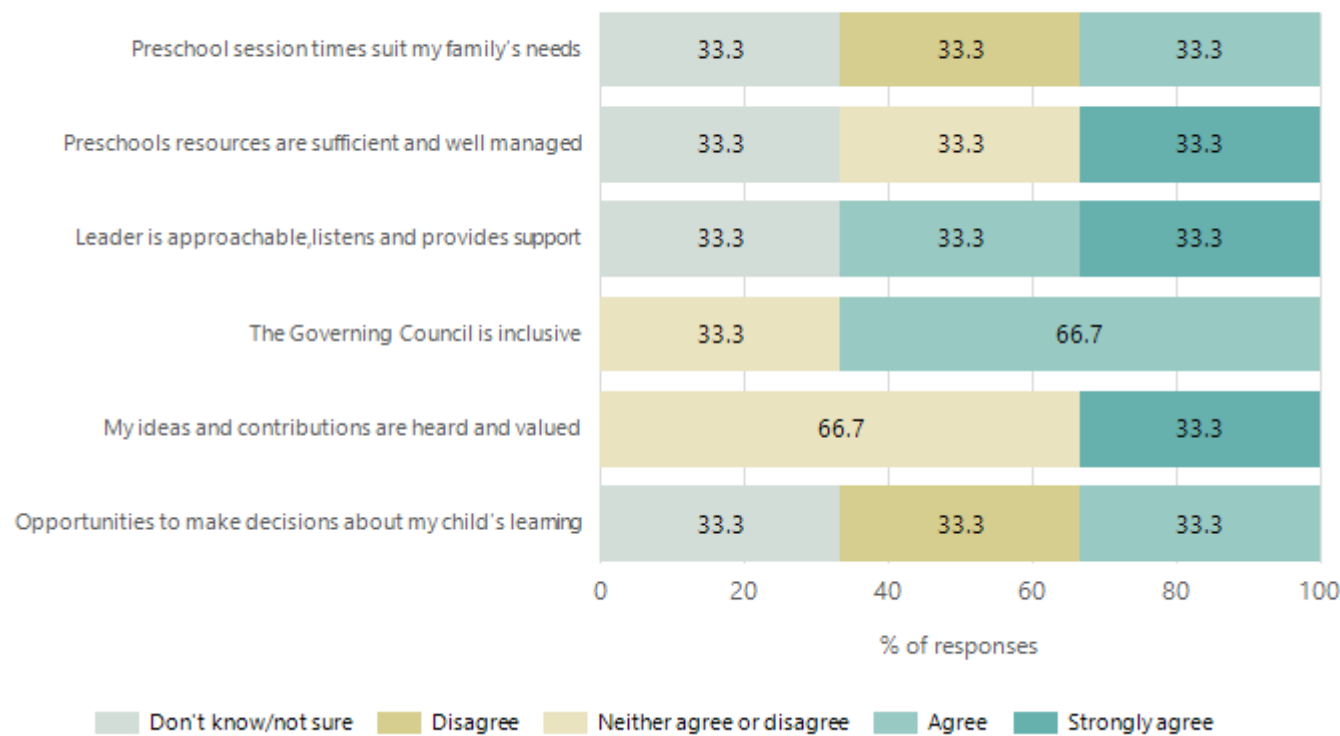
In South Australia, preschool attendance is not compulsory, but it is strongly encouraged. Preschool gives children the best opportunity to develop skills, which prepare them for school. These benefits include establishing positive routines and habits, friendships and connections as well as developing communication, problem-solving and creative skills. All children are entitled to access a preschool program over 4 terms the year before they start school.

In South Australia, all children and young people must be in school from 6 years to 16 years old. They must attend a government or non-government school full time. From age 16 to 17 however, young people must attend school or an approved learning program (such as an apprenticeship, traineeship, accredited course or university). Schools and parents must encourage and support students to come to school every day. Parents and caregivers must make sure their child is enrolled in a school, and attends school all day and everyday it is open, unless a child is sick or has an approved exemption. Teachers and leaders actively follow up when a student misses school, including recording all absences and non-attendance. All schools in South Australia have local attendance procedures governed under the Education and Children's Services Regulations 2020.



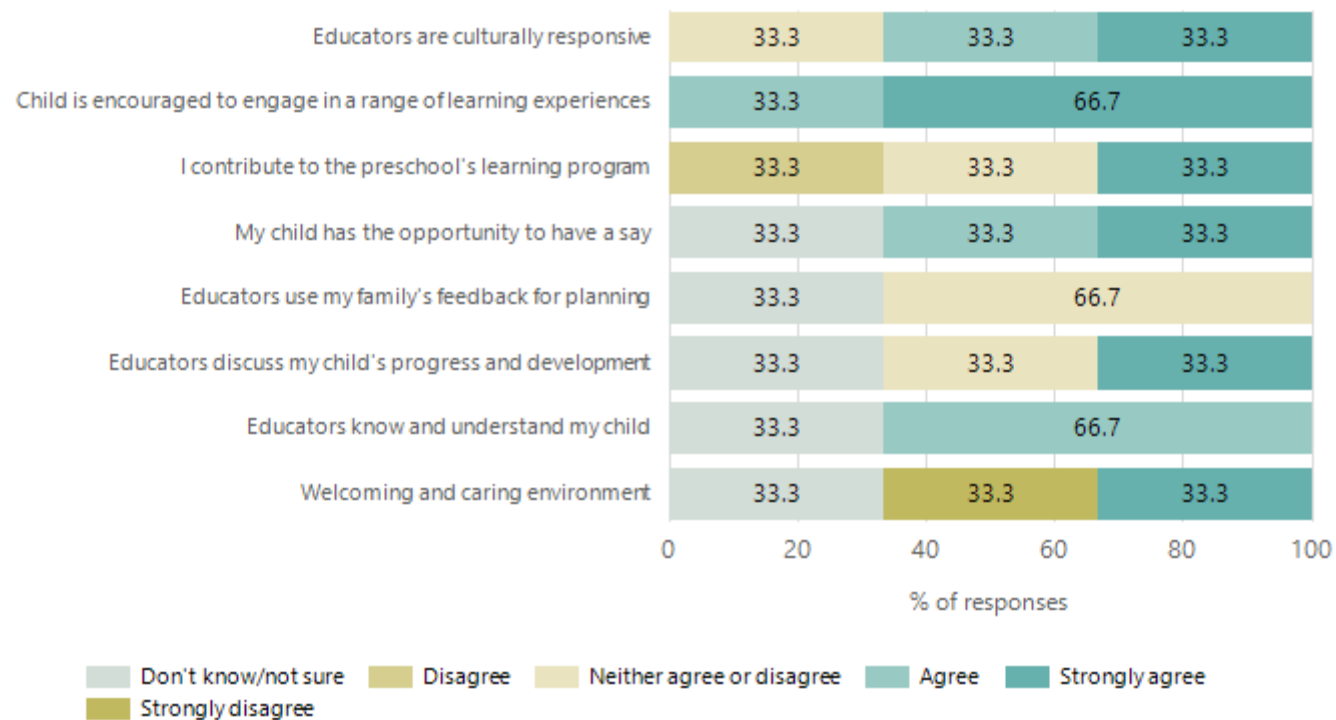
# Preschool Family Opinion Survey

## Governance, Leadership and Management



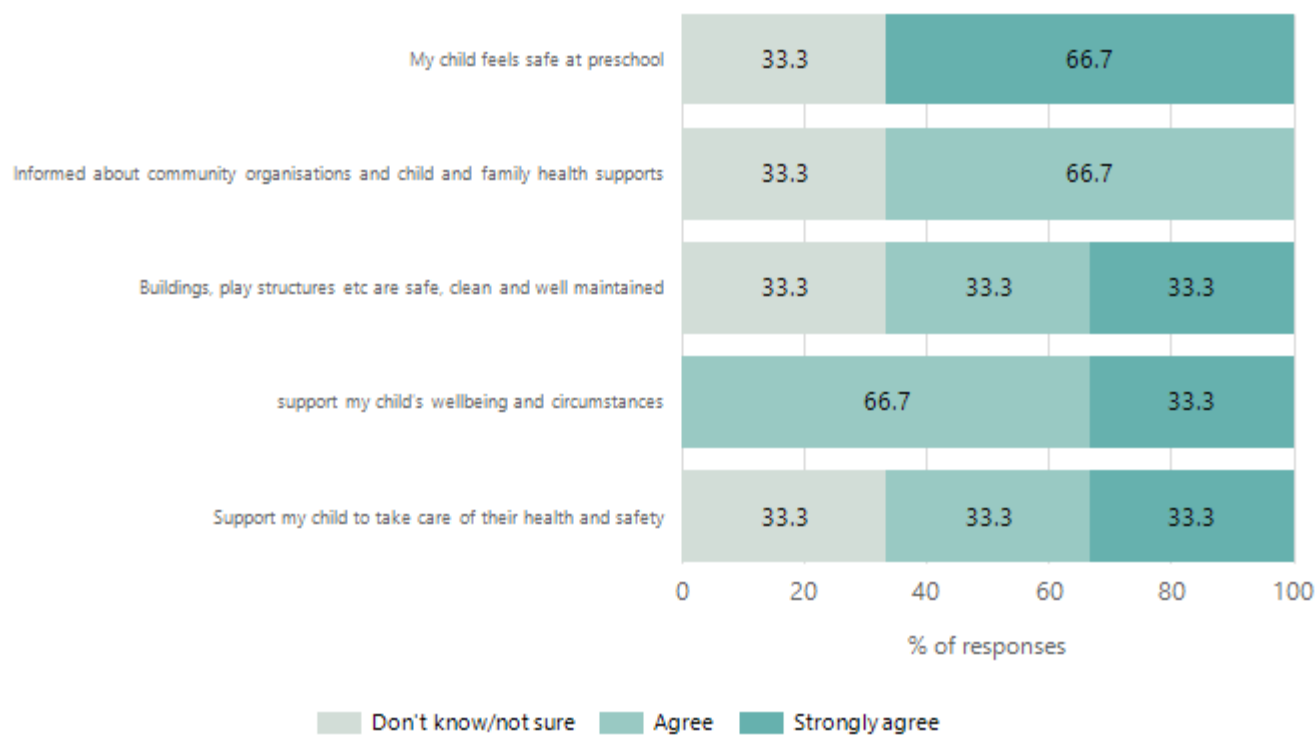
Data Source: 2024 Department for Education Preschool Family Opinions Survey, Term 3 2024.

## Quality of Teaching and Learning



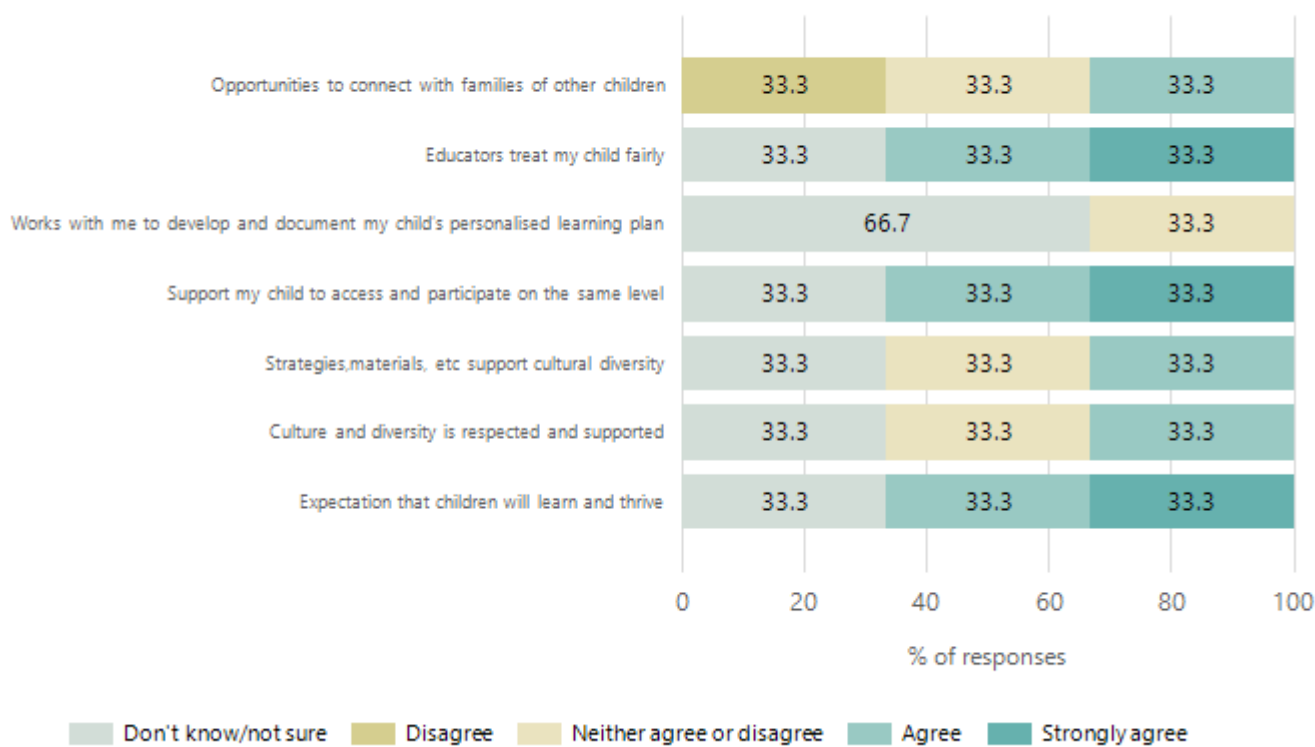
Data Source: 2024 Department for Education Preschool Family Opinions Survey, Term 3 2024.

## Safety, Health and Wellbeing



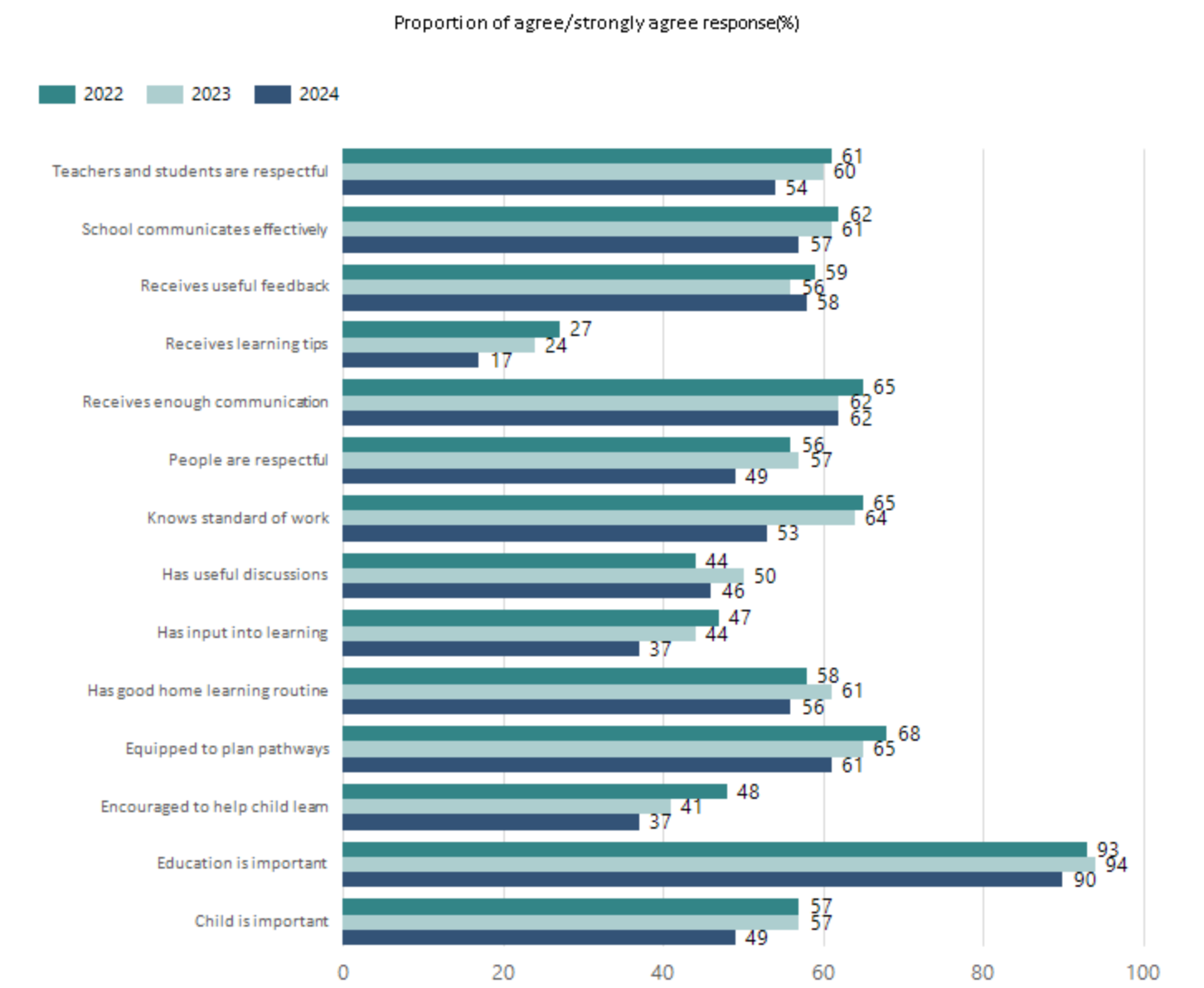
Data Source: 2024 Department for Education Preschool Family Opinions Survey, Term 3 2024.

## Support and Inclusion



Data Source: 2024 Department for Education Preschool Family Opinions Survey, Term 3 2024.

# School Parent Opinion Survey Results



Data Source: 2024 Department for Education Parent Opinions Survey, Term 3 2024.

# Destination Schools

Feeder Schools (Site number - Name)	2022	2023	2024
1907 - Reynella East College	100.0%	98.0%	94.6%
9999 - Unknown			3.6%

Note: The data is collected in term 3. It does not reflect actual schools enrolled in by existing preschool children. A blank cell indicates there was no data for students enrolled.

Data Source: Department for Education Destination Data Report, 2024.

# Intended Destination

Leave Reason	Number	%
NG - ATTENDING NON-GOV SCHOOL IN SA	13	9.0%
OV - LEFT SA FOR OVERSEAS	36	24.0%
PE - PAID EMPLOYMENT IN SA	17	11.0%
SM - SEEKING EMPLOYMENT IN SA	19	13.0%
TG - TRANSFERRED TO SA GOVERNMENT SCHOOL	48	32.0%

Data Source: Department for Education Destination Data Report, 2024. Data extract term 3 2024. Data shows recorded destinations for students that left the school in the previous year. Data is uploaded by schools in term 3 and may not reflect final or total figures at time of report creation.

# Highest Qualifications held by the teaching workforce and workforce composition

All teachers at this school are qualified and registered with the SA Teachers Registration Board.

Qualification Level	Number of Qualifications
Bachelor's degrees or Diplomas	91
Postgraduate Qualifications	62

Data Source: Data extracted from Mandatory Workforce Information Collections as on the last pay date of June 2024. As self-reported by staff in the system.

Please note: Data includes staff who are Actively employed and on extended paid leave. Please note only the highest qualification of the Teaching staff is reported. Excludes any number of other certifications earned.

## Workforce composition including indigenous staff

	Teaching Staff		Non-Teaching Staff	
	Indigenous	Non-Indigenous	Indigenous	Non-Indigenous
Full-Time Equivalents	2.0	138.2	0.9	46.3
Persons	2.0	151.0	1.0	60.0

Data Source: Data extracted from Mandatory Workforce Information Collection as on the last pay date of June 2024.

Please note: Data includes staff who are actively employed and on extended paid leave. "Indigenous category" is self-reported by staff in the system.

# Financial Statement

Funding Source	Amount
Grants: State	\$21,407,254.34
Grants: Commonwealth	\$43,492.00
Parent Contributions	\$867,852.30
Fund Raising	\$64,298.67
Other	\$343,683.53

Data Source: School supplied data.