

2024 annual report to the
Community

Reynella South Primary School and Reynella South Preschool

Reynella South Primary School number: 1044

Reynella South Preschool number: 1615

Partnership: Panalatinga



School principal:

Tara Augustin

T Augustin



Context Statement

Reynella South Primary School caters for students from R-6. At the time of this report, the enrolment in 2024 is 165. Reynella South Primary School is classified as Category 4 on the Department for Education Index of Educational Disadvantage. At the time of this report, the school population includes 7% Aboriginal students, 28% students with disabilities, 4% students with English as an additional language or dialect (EALD) funded background, 2% children/young people in care. Further information about the school is available on the school's website (including its context statement), as well as the My School website.

Information about Reynella South Preschool is available on the centres website, as well as the Australian Childrens Education and Care Quality Authority (ACECQA) website.

Data Source: Department for Education data holdings from Mid census captured in AUGUST 2024.

Governing Council Report

The Governing Council of Reynella South School was an integral part of the school during 2024 with a strong group of members and support of the staff and management. We focused on continuing to improve and strengthen our school, ensuring that the children were always the focus. Being part of the Governing Council is an amazing way to have a voice and be a hands-on member of our amazing community.

2024 was another successful year for fundraising led by our team of volunteers and supported by all the staff and community of RSS. The funds are being used to enhance our outdoor play area in the Fisher Yard. This project will continue being fundraised for in 2025.

The overall amount fundraised was an amazing \$9,300. This was through many events throughout the year, such as raffles, lunch meal deals, cake stalls, and the Colour Explosion Fun Run. Again, we thank our volunteers, staff and RSS community as none of this would be possible without their efforts.

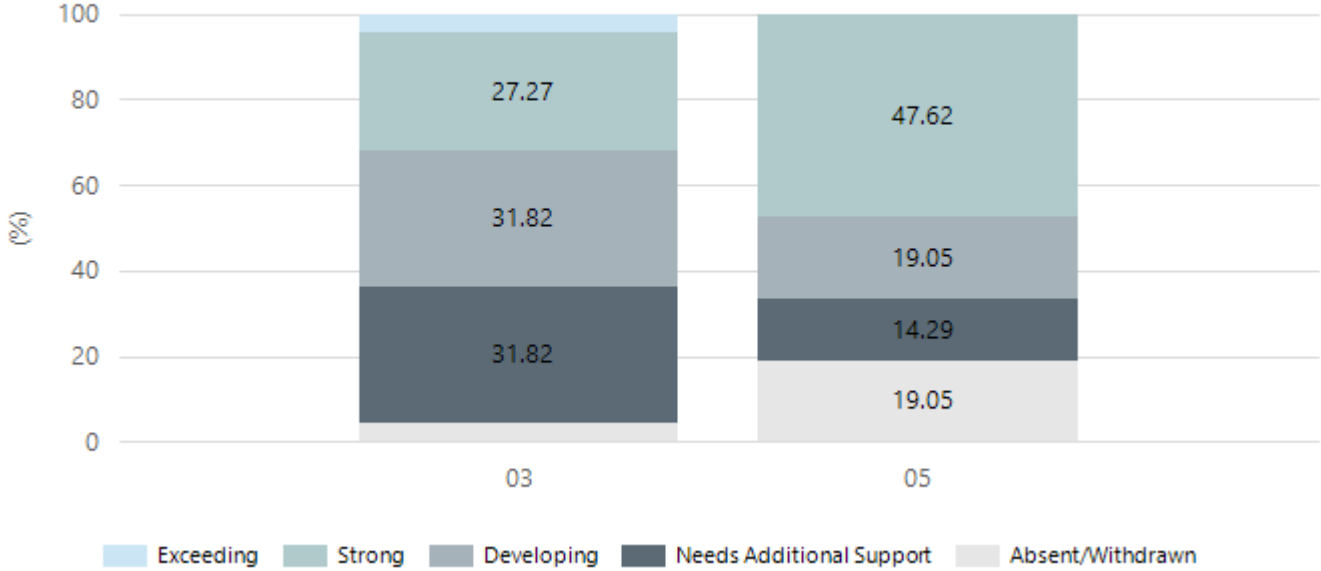
We encourage any members of our school community to join our Governing Council and help us continue supporting our school. We would love to see the Governing Council expand to a larger group. We look forward to having a successful 2025.

Performance Summary

NAPLAN Proficiency

In 2023 the Australian Curriculum, Assessment and Reporting Authority (ACARA) - a Commonwealth Independent statutory authority - announced changes to NAPLAN performance reporting. The new approach replaces the previous numerical NAPLAN bands and the national minimum standard.

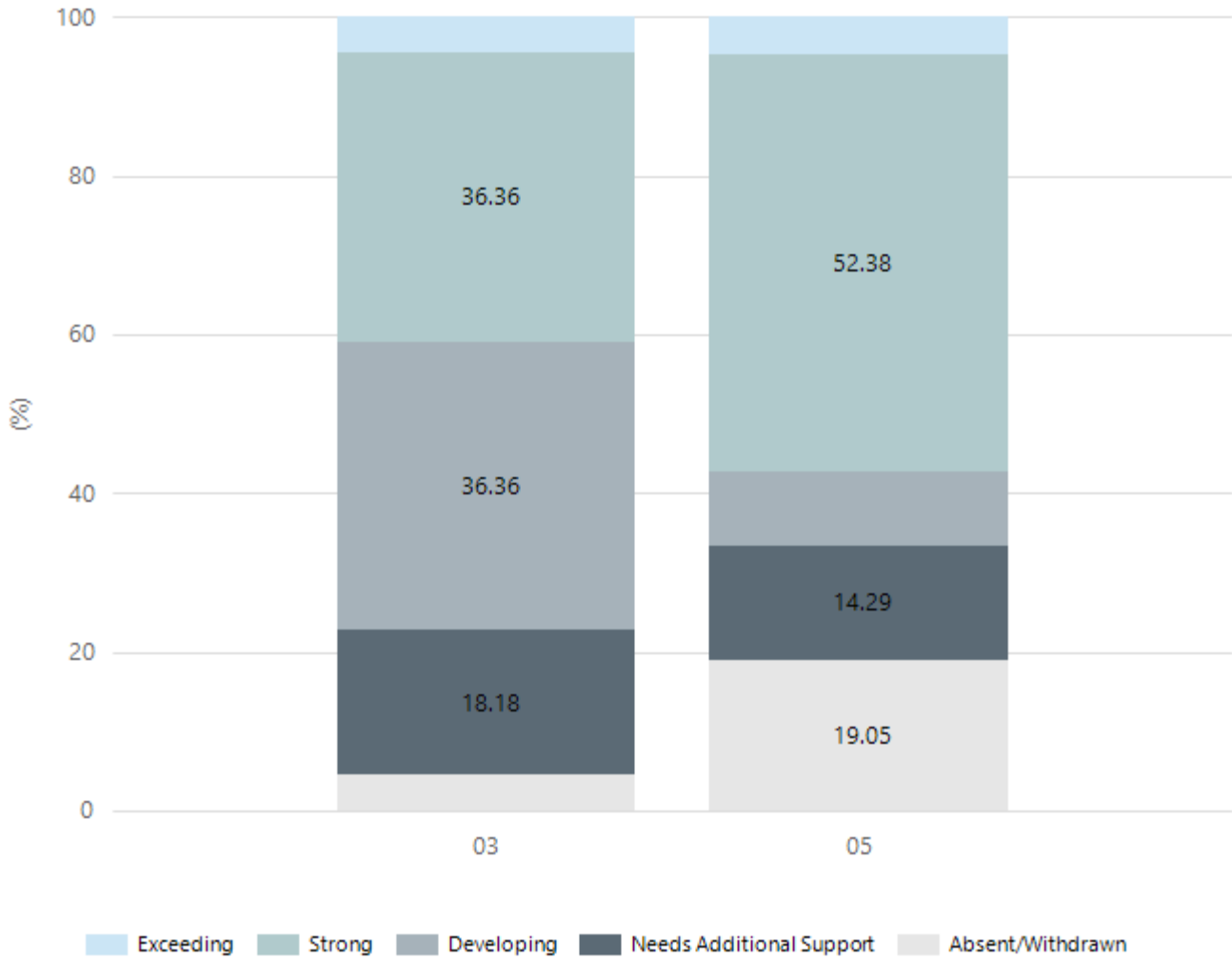
Numeracy



Year Level	03	05
Exceeding	1	
Strong	6	10
Developing	7	4
Needs Additional Support	7	3
Absent/Withdrawn	1	4
Total	22	21

Data Source: Department for Education Assessment Data Holdings, 2024. If there are less than 6 students who sat NAPLAN in a school, no information will be shown. If a year level has less than 6 students, that year level will not be shown in NAPLAN results.

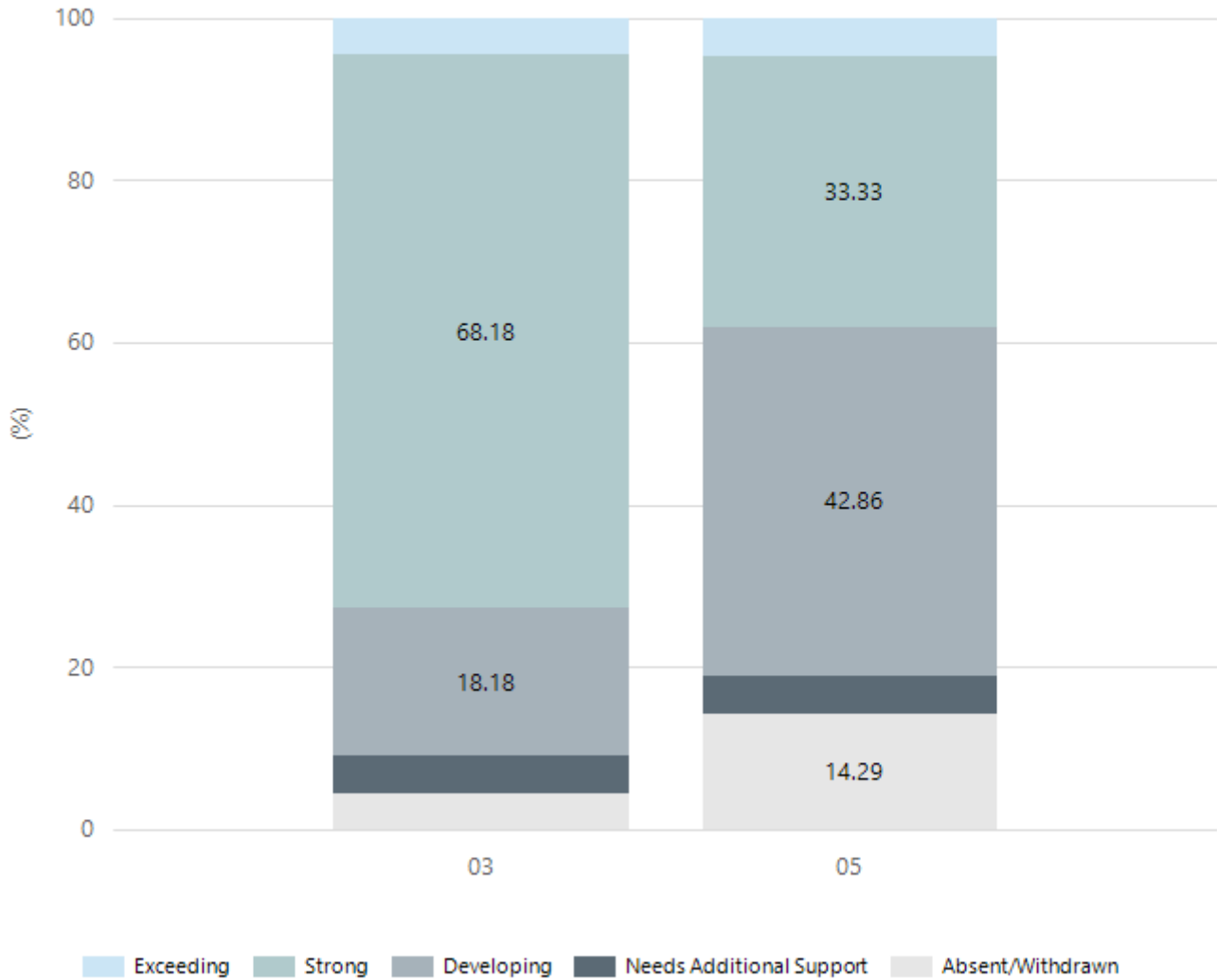
Reading



Year Level	03	05
Exceeding	1	1
Strong	8	11
Developing	8	2
Needs Additional Support	4	3
Absent/Withdrawn	1	4
Total	22	21

Data Source: Department for Education Assessment Data Holdings, 2024. If there are less than 6 students who sat NAPLAN in a school, no information will be shown. If a year level has less than 6 students, that year level will not be shown in NAPLAN results.

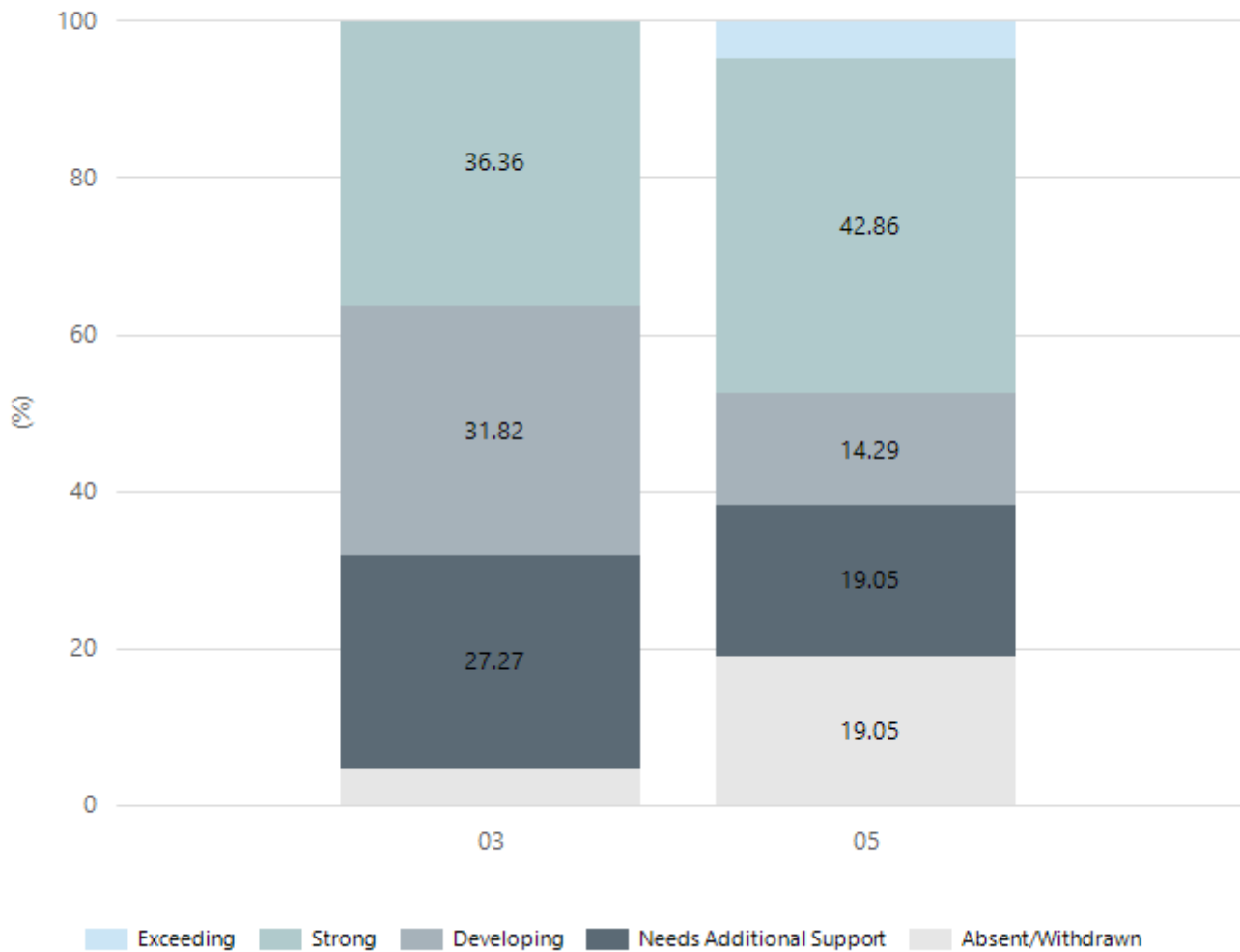
Writing



Year Level	03	05
Exceeding	1	1
Strong	15	7
Developing	4	9
Needs Additional Support	1	1
Absent/Withdrawn	1	3
Total	22	21

Data Source: Department for Education Assessment Data Holdings, 2024. If there are less than 6 students who sat NAPLAN in a school, no information will be shown. If a year level has less than 6 students, that year level will not be shown in NAPLAN results.

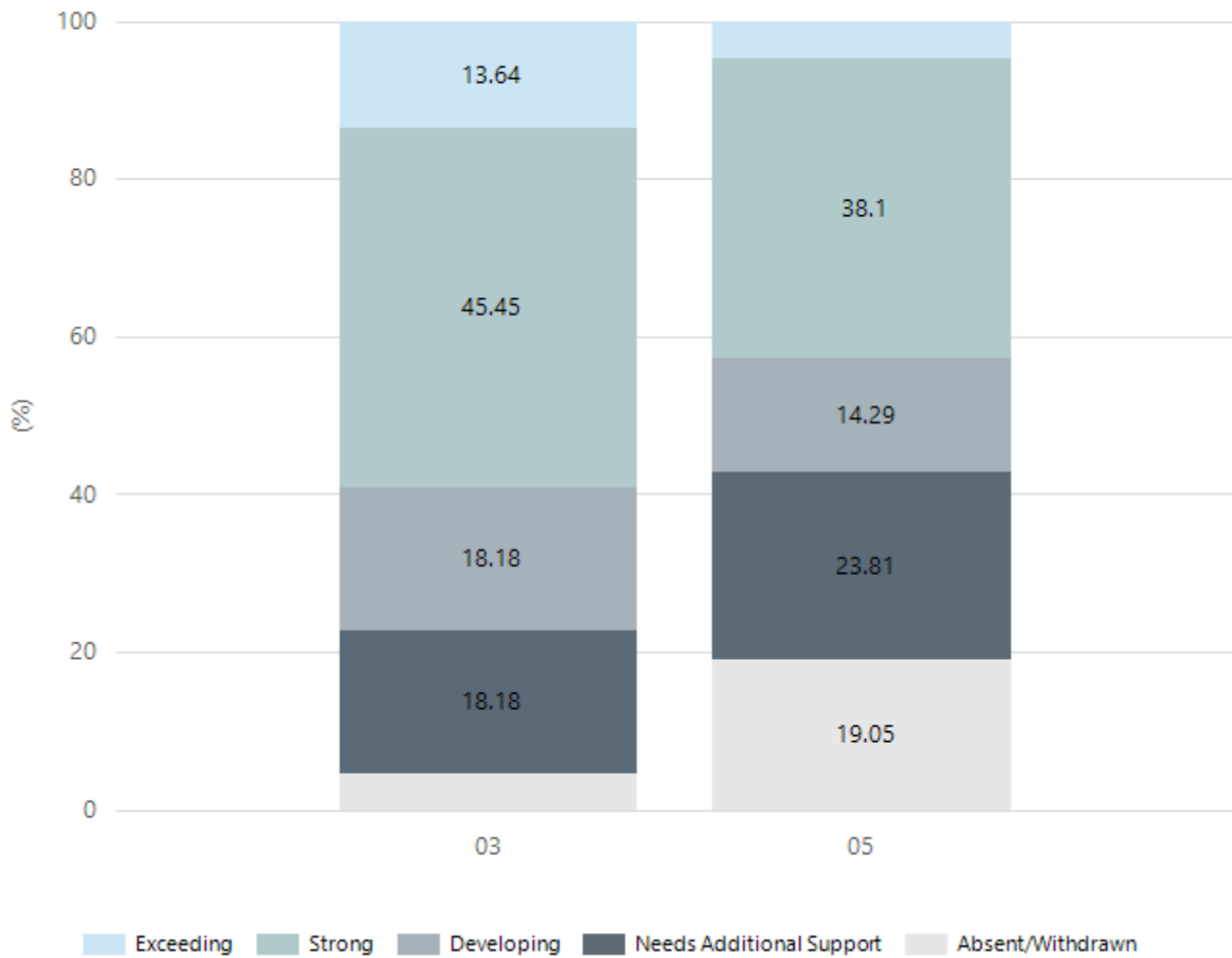
Grammar



Year Level	03	05
Exceeding		1
Strong	8	9
Developing	7	3
Needs Additional Support	6	4
Absent/Withdrawn	1	4
Total	22	21

Data Source: Department for Education Assessment Data Holdings, 2024. If there are less than 6 students who sat NAPLAN in a school, no information will be shown. If a year level has less than 6 students, that year level will not be shown in NAPLAN results.

Spelling



Year Level	03	05
Exceeding	3	1
Strong	10	8
Developing	4	3
Needs Additional Support	4	5
Absent/Withdrawn	1	4
Total	22	21

Data Source: Department for Education Assessment Data Holdings, 2024. If there are less than 6 students who sat NAPLAN in a school, no information will be shown. If a year level has less than 6 students, that year level will not be shown in NAPLAN results.

Preschool Attendance

	Term 1	Term 2	Term 3	Term 4
2021 centre	87.4%	75.9%	91.9%	79.3%
2022 centre	76.8%	75%	75.3%	84.2%
2023 centre	85.4%	84.3%	83.5%	80.1%
2024 centre	82.6%		84.7%	

Based on attendances recorded in the two-week reference period each term. Data for eligible enrolments as described in the department's Enrolment policy. Attendance rates may differ to previous reporting with the transfer from calculations based on deemed attendance to actual attendance using booked hours divided by attended hours. Data Source: Department for Education Attendance Data, Semester 1 Report 2024. A blank cell indicates there we no students enrolled.

School Attendance

Year Level	2022	2023	2024
Reception	90.3%	92.0%	88.9%
Year 01	84.6%	89.7%	90.1%
Year 02	90.5%	89.1%	85.8%
Year 03	88.3%	88.7%	92.2%
Year 04	84.9%	90.4%	91.5%
Year 05	86.6%	84.1%	82.5%
Year 06	89.1%	89.3%	79.4%
Total	87.7%	89.0%	87.3%

Data Source: Department for Education Attendance Data, Semester 1 Report 2024. A blank cell indicates there we no students enrolled. 'Primary Other' includes students enrolled in specialised education options. 'Secondary Other' includes students who have already spent a year at Year 12 and elected to undertake further study at Year 12.

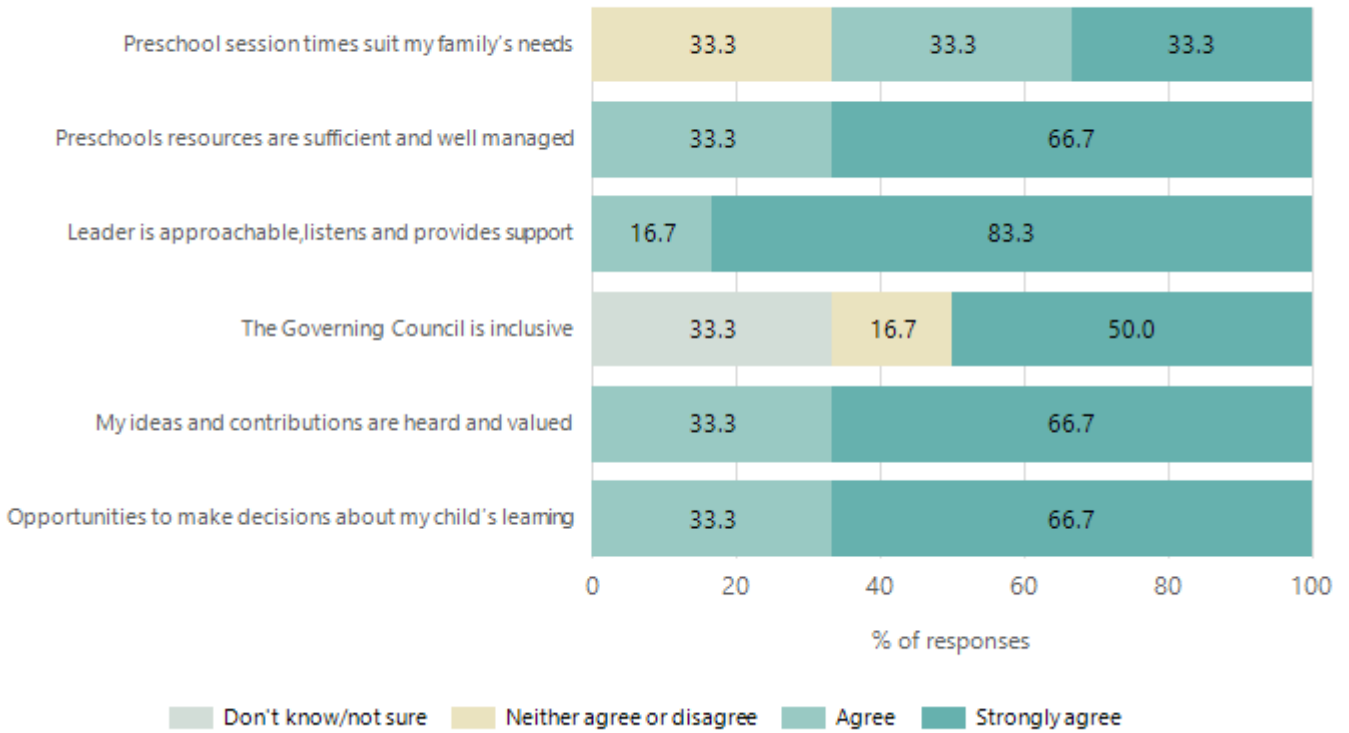
Attendance Comment

In South Australia, preschool attendance is not compulsory, but it is strongly encouraged. Preschool gives children the best opportunity to develop skills, which prepare them for school. These benefits include establishing positive routines and habits, friendships and connections as well as developing communication, problem-solving and creative skills. All children are entitled to access a preschool program over 4 terms the year before they start school.

In South Australia, all children and young people must be in school from 6 years to 16 years old. They must attend a government or non-government school full time. From age 16 to 17 however, young people must attend school or an approved learning program (such as an apprenticeship, traineeship, accredited course or university). Schools and parents must encourage and support students to come to school every day. Parents and caregivers must make sure their child is enrolled in a school, and attends school all day and everyday it is open, unless a child is sick or has an approved exemption. Teachers and leaders actively follow up when a student misses school, including recording all absences and non-attendance. All schools in South Australia have local attendance procedures governed under the Education and Children's Services Regulations 2020.

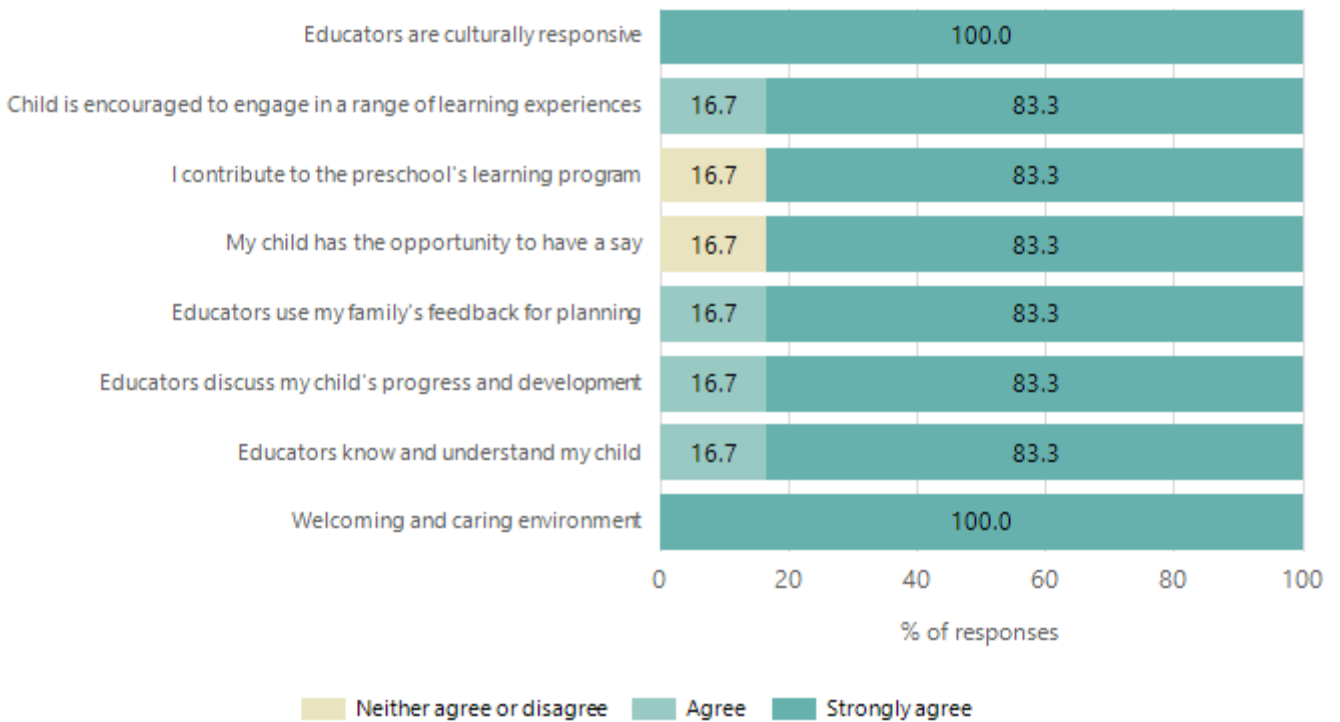
Preschool Family Opinion Survey

Governance, Leadership and Management



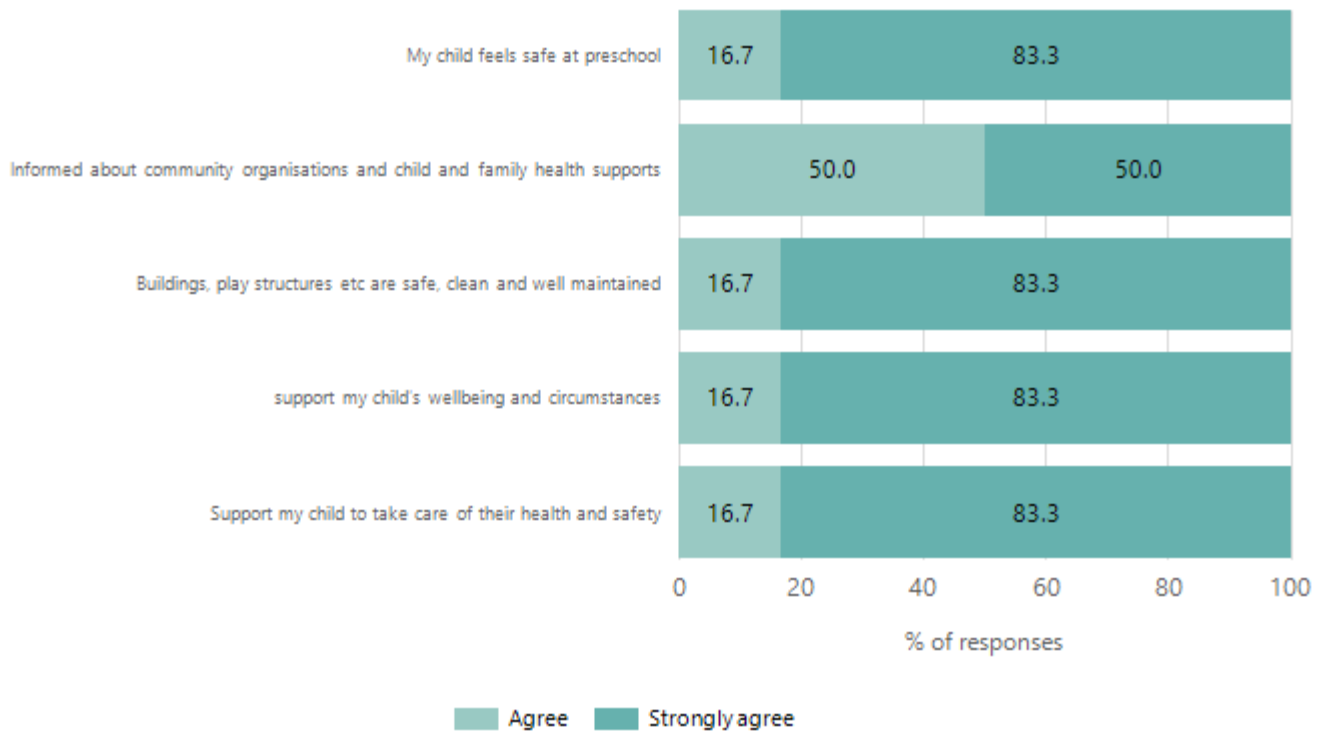
Data Source: 2024 Department for Education Preschool Family Opinions Survey, Term 3 2024.

Quality of Teaching and Learning



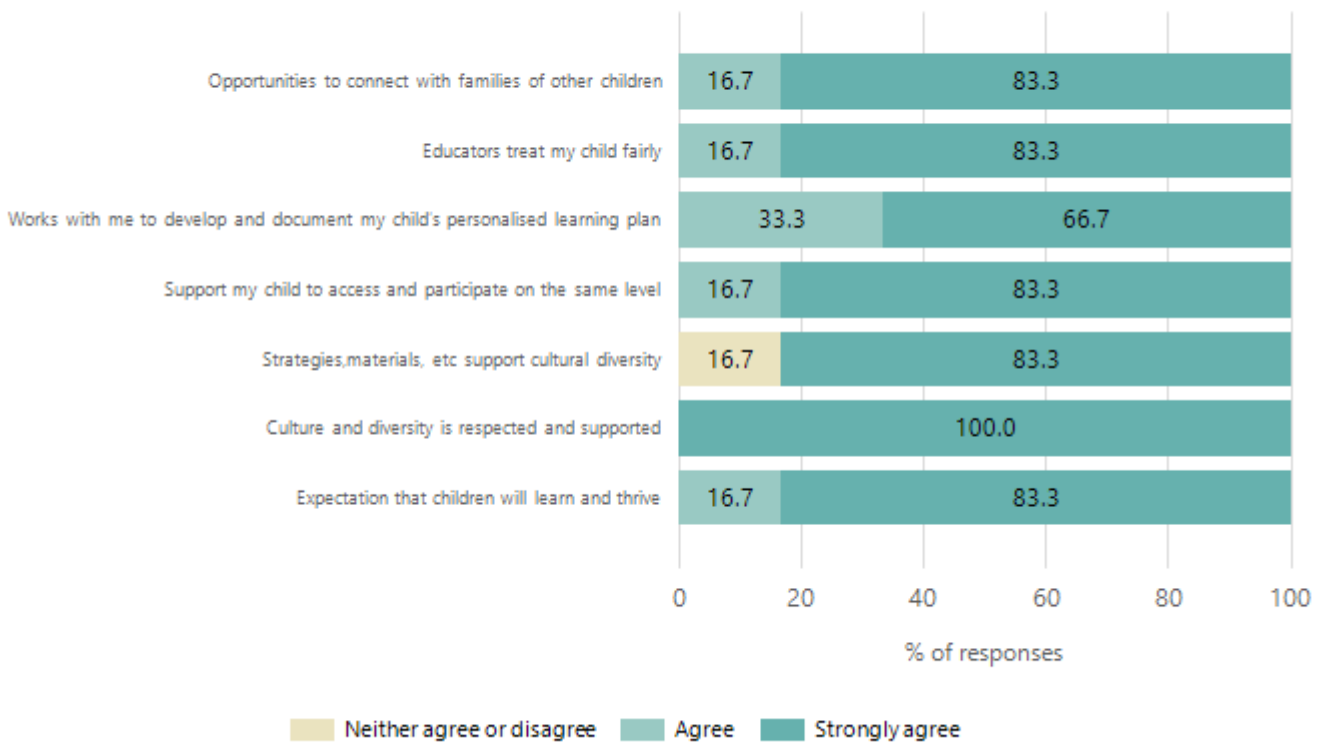
Data Source: 2024 Department for Education Preschool Family Opinions Survey, Term 3 2024.

Safety, Health and Wellbeing



Data Source: 2024 Department for Education Preschool Family Opinions Survey, Term 3 2024.

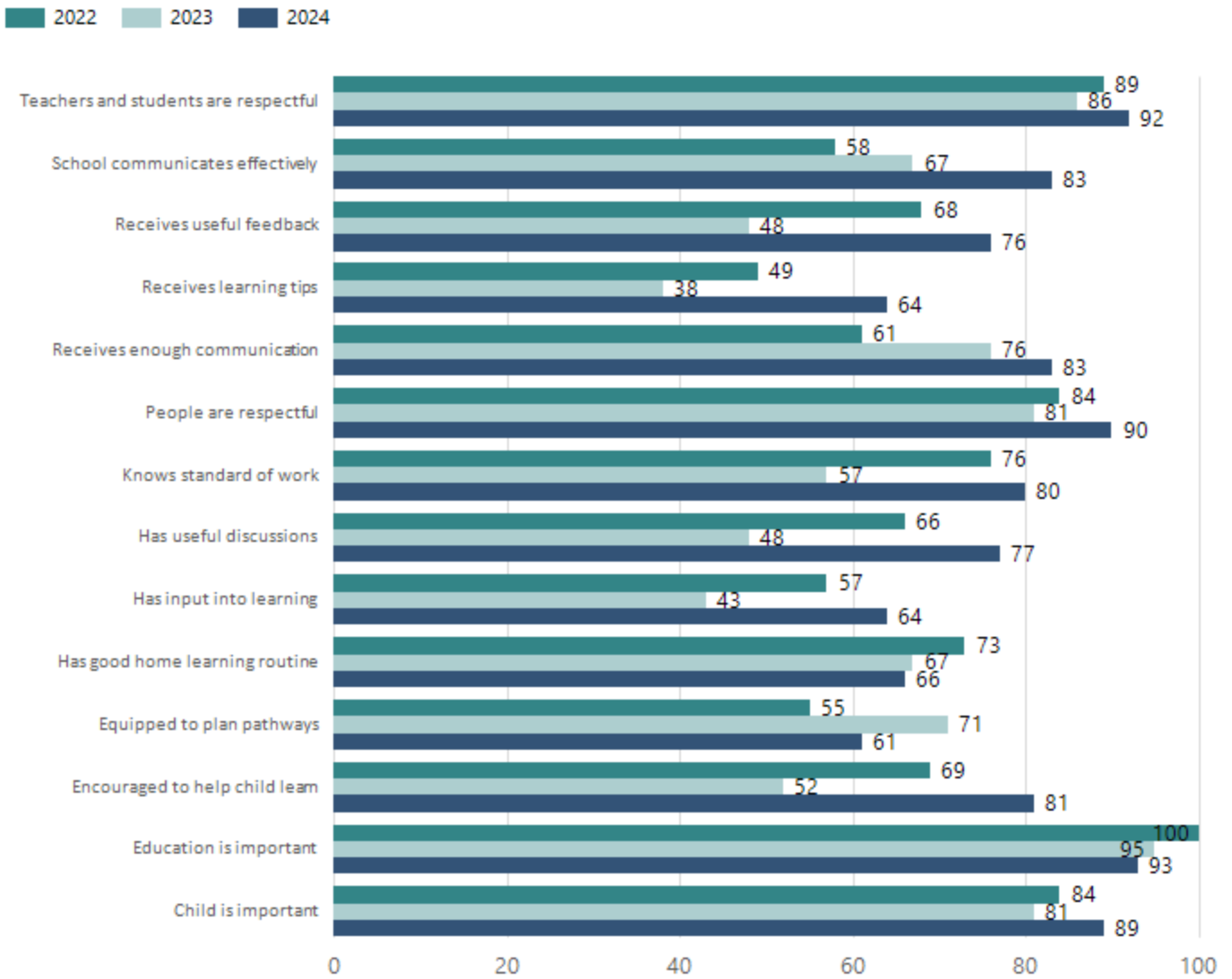
Support and Inclusion



Data Source: 2024 Department for Education Preschool Family Opinions Survey, Term 3 2024.

School Parent Opinion Survey Results

Proportion of agree/strongly agree response(%)



Data Source: 2024 Department for Education Parent Opinions Survey, Term 3 2024.

Destination Schools

Feeder Schools (Site number - Name)	2022	2023	2024
0379 - Reynella Primary School		6.1%	8.3%
1044 - Reynella South Primary School	87.5%	75.8%	75.0%
1056 - Woodend Primary School	4.2%		
8261 - IQRA Islamic College of South Australia			4.2%
8418 - Southern Vales Christian College Morphett Vale		3.0%	
8498 - Tatachilla Lutheran College			4.2%
9999 - Unknown	8.3%	15.2%	8.3%

Note: The data is collected in term 3. It does not reflect actual schools enrolled in by existing preschool children. A blank cell indicates there was no data for students enrolled.

Data Source: Department for Education Destination Data Report, 2024.

Intended Destination

Leave Reason	Number	%
NG - ATTENDING NON-GOV SCHOOL IN SA	2	18.0%
OV - LEFT SA FOR OVERSEAS	1	9.0%
TG - TRANSFERRED TO SA GOVERNMENT SCHOOL	8	73.0%

Data Source: Department for Education Destination Data Report, 2024. Data extract term 3 2024. Data shows recorded destinations for students that left the school in the previous year. Data is uploaded by schools in term 3 and may not reflect final or total figures at time of report creation.

Highest Qualifications held by the teaching workforce and workforce composition

All teachers at this school are qualified and registered with the SA Teachers Registration Board.

Qualification Level	Number of Qualifications
Bachelor's degrees or Diplomas	8
Postgraduate Qualifications	7

Data Source: Data extracted from Mandatory Workforce Information Collections as on the last pay date of June 2024. As self-reported by staff in the system.

Please note: Data includes staff who are Actively employed and on extended paid leave. Please note only the highest qualification of the Teaching staff is reported. Excludes any number of other certifications earned.

Workforce composition including indigenous staff

	Teaching Staff		Non-Teaching Staff	
	Indigenous	Non-Indigenous	Indigenous	Non-Indigenous
Full-Time Equivalents	0.0	12.9	0.6	6.0
Persons	0.0	15.0	1.0	8.0

Data Source: Data extracted from Mandatory Workforce Information Collection as on the last pay date of June 2024.

Please note: Data includes staff who are actively employed and on extended paid leave. "Indigenous category" is self-reported by staff in the system.

Financial Statement

Funding Source	Amount
Grants: State	\$2 576 325.20
Grants: Commonwealth	\$30 000
Parent Contributions	\$82 395.30
Fund Raising	\$12 062.08
Other	\$62 679.25

Data Source: School supplied data.

