

2024 annual report to the Community

Nairne School - Preschool & Primary and Nairne Preschool

Nairne School - Preschool & Primary
number: 306

Nairne Preschool number: 1604

Partnership: Heysen



School principal:

Toni Burford

Signature

Date of endorsement:

13/05/2025



Government
of South Australia
Department for Education



Nairne School

Preschool & Primary



Context Statement

Nairne School - Preschool and Primary caters for students from R-6. At the time of this report, the enrolment in 2024 is 407. Nairne School - Preschool and Primary is classified as Category 7 on the Department for Education Index of Educational Disadvantage. At the time of this report, the school population includes 2% Aboriginal students, 14% students with disabilities, 2% children/young people in care. Further information about the school is available on the school's website (including its context statement), as well as the My School website.

Information about Nairne Preschool is available on the centres website, as well as the Australian Children's Education and Care Quality Authority (ACECQA) website.

Data Source: Department for Education data holdings from Mid census captured in AUGUST 2024.

Governing Council Report

As we reflect on 2024 as a Governing Council, I would like to begin by thanking Steve Watt for his time as Chairperson for the first half of the year. This year has seen several important developments, including securing a new canteen provider, now operating three days a week, which has been a welcome addition for our students and families. The Council has also focused on strengthening governance by reviewing and updating our policies and procedures, including the Terms of Reference for not only the main committee but also the sub-committees and continuing to work closely with school leadership on key areas such as the school uniform policy. A significant emphasis has been placed on building stronger connections with various groups within the school community to better understand how the Governing Council can support their goals and initiatives.

Our Fundraising Sub-Committee played a vital role in supporting school events throughout the year, most notably co-hosting our first-ever "Bricks in the Hills" event—a fantastic success that brought the community together. Additional support was also provided for the School Disco, Easter Raffle, and the popular Sports Day Cake Stall. Looking ahead to 2025, we are excited to continue collaborating with leadership on the next stage of our Nature Play development. After witnessing the incredible transformation of the OSHC space this year, we are inspired to keep building inclusive and engaging outdoor spaces for our students to explore and enjoy.

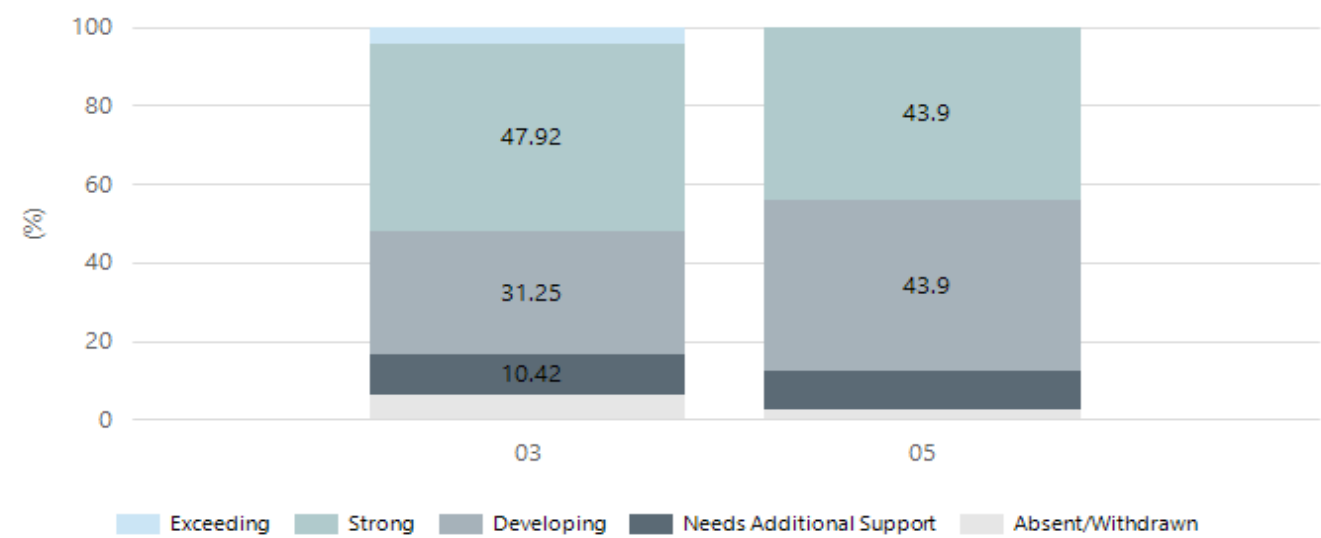
Daniel Robinson, Chairperson 2024

Performance Summary

NAPLAN Proficiency

In 2023 the Australian Curriculum, Assessment and Reporting Authority (ACARA) - a Commonwealth Independent statutory authority - announced changes to NAPLAN performance reporting. The new approach replaces the previous numerical NAPLAN bands and the national minimum standard.

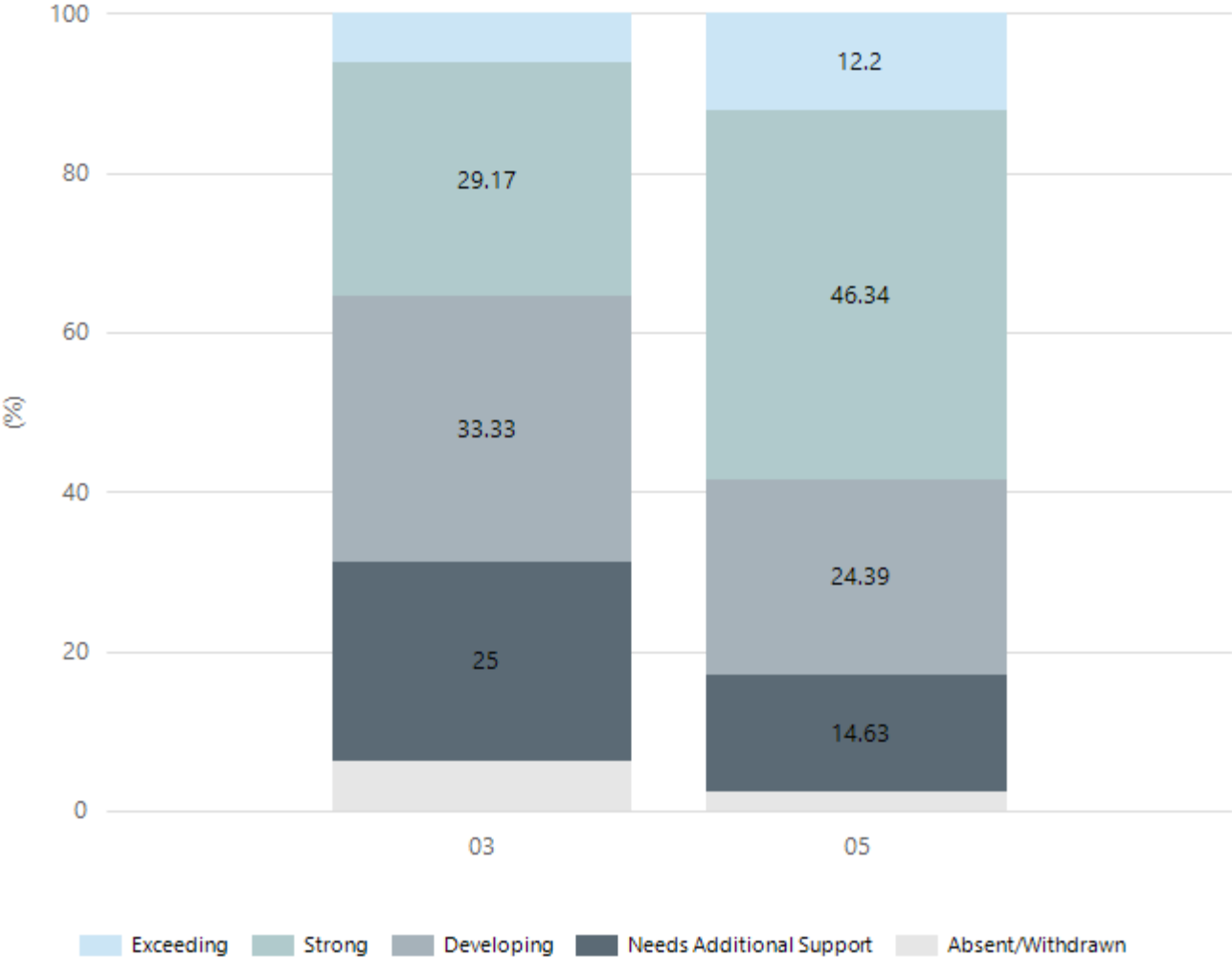
Numeracy



Year Level	03	05
Exceeding	2	
Strong	23	18
Developing	15	18
Needs Additional Support	5	4
Absent/Withdrawn	3	1
Total	48	41

Data Source: Department for Education Assessment Data Holdings, 2024. If there are less than 6 students who sat NAPLAN in a school, no information will be shown. If a year level has less than 6 students, that year level will not be shown in NAPLAN results.

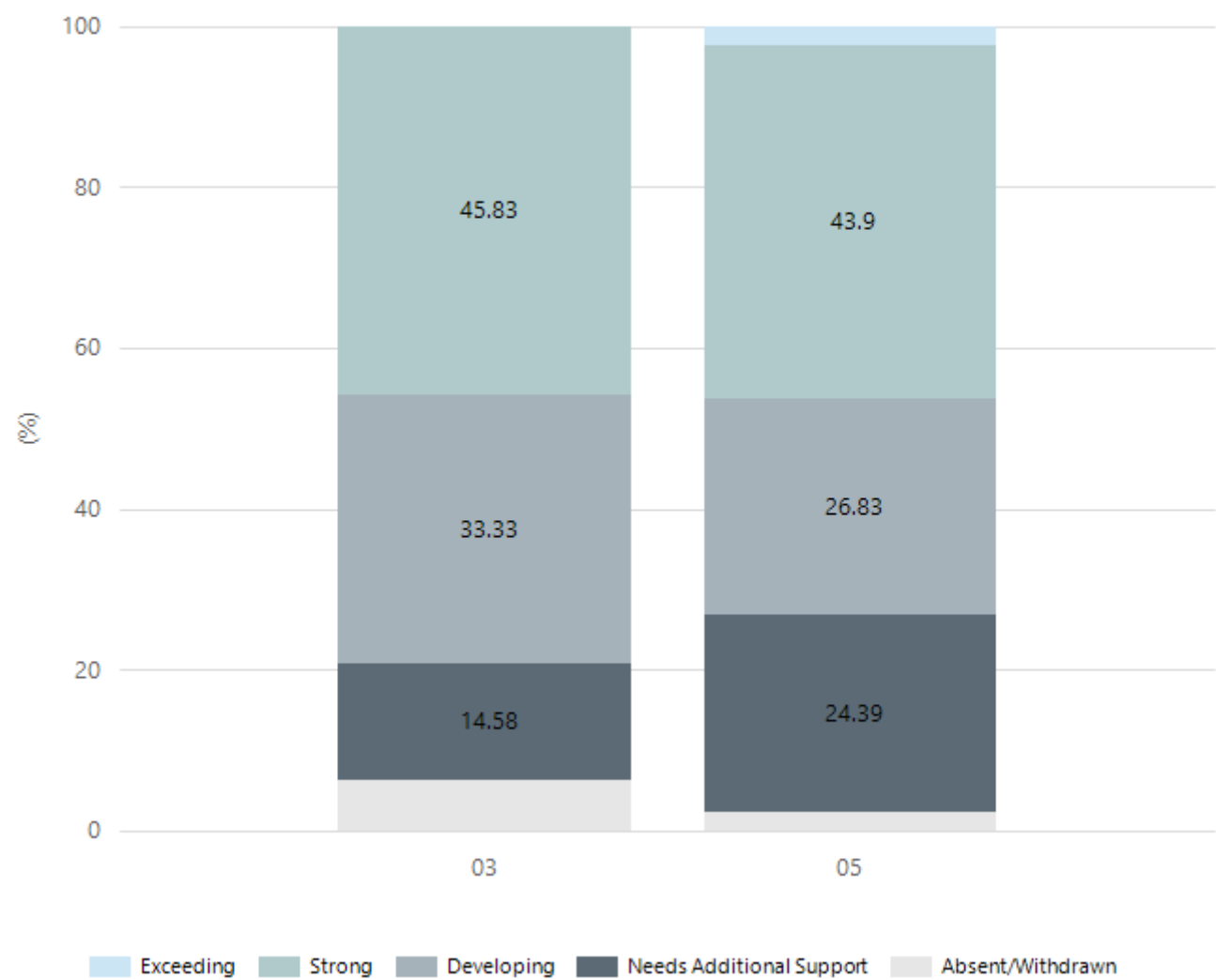
Reading



Year Level	03	05
Exceeding	3	5
Strong	14	19
Developing	16	10
Needs Additional Support	12	6
Absent/Withdrawn	3	1
Total	48	41

Data Source: Department for Education Assessment Data Holdings, 2024. If there are less than 6 students who sat NAPLAN in a school, no information will be shown. If a year level has less than 6 students, that year level will not be shown in NAPLAN results.

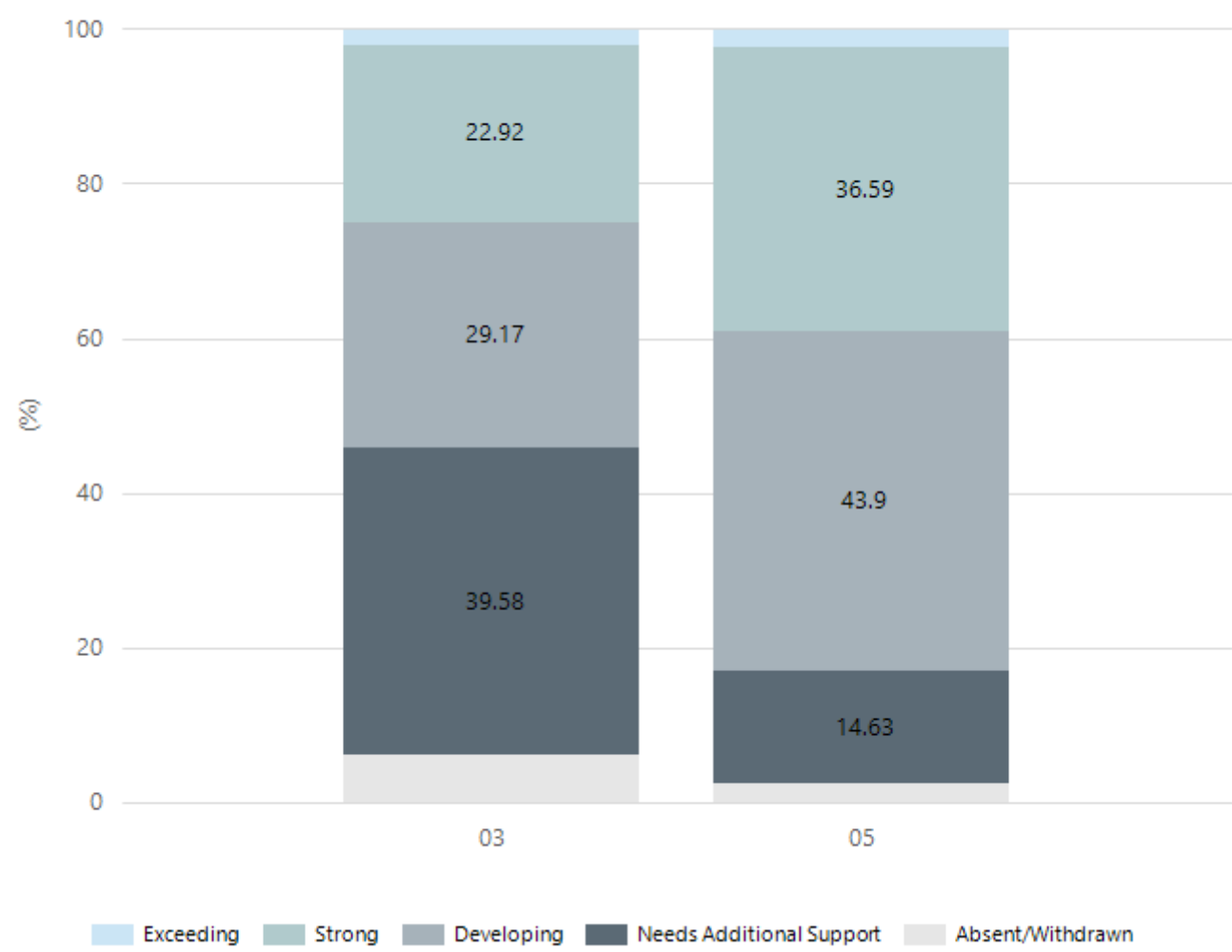
Writing



Year Level	03	05
Exceeding		1
Strong	22	18
Developing	16	11
Needs Additional Support	7	10
Absent/Withdrawn	3	1
Total	48	41

Data Source: Department for Education Assessment Data Holdings, 2024. If there are less than 6 students who sat NAPLAN in a school, no information will be shown. If a year level has less than 6 students, that year level will not be shown in NAPLAN results.

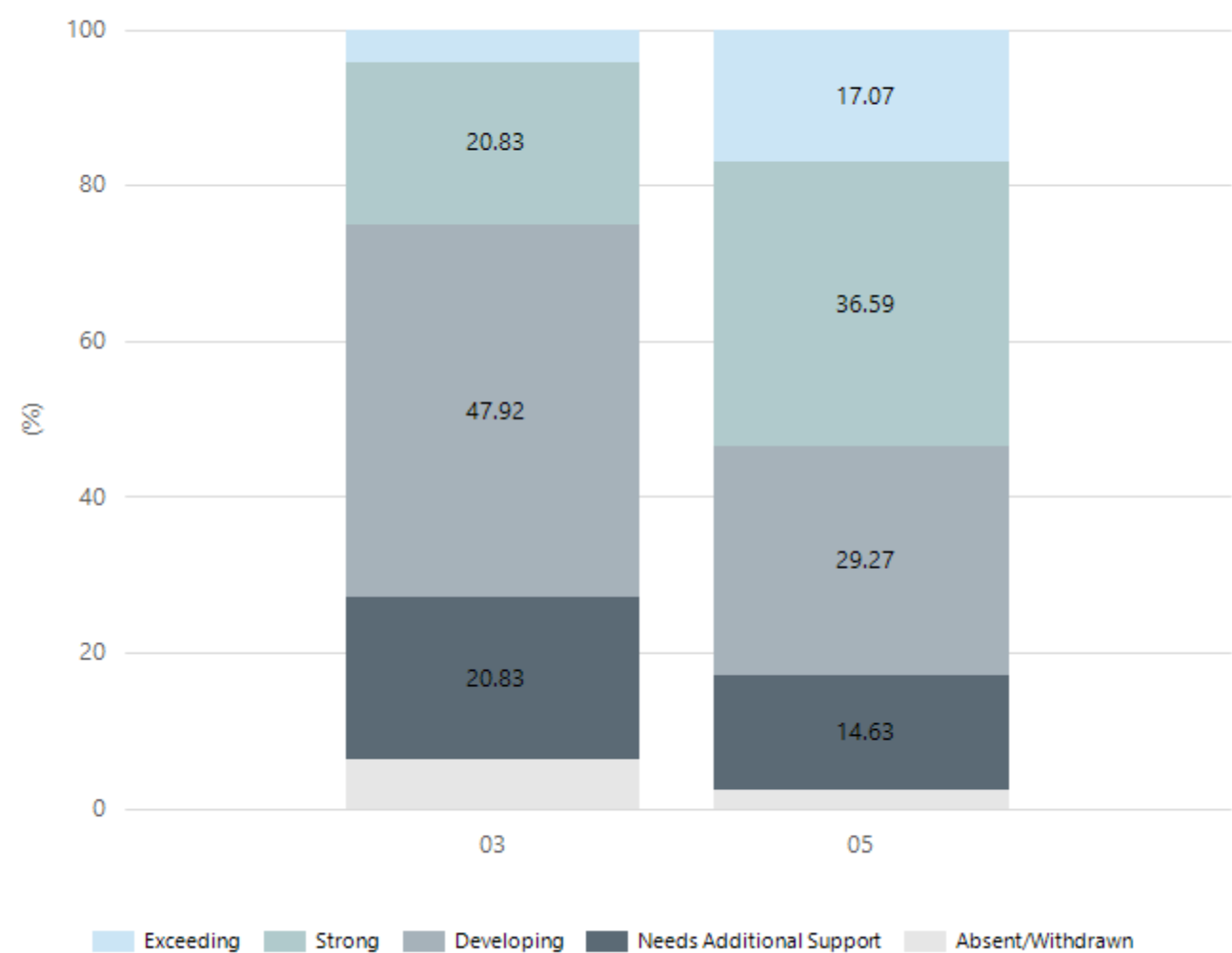
Grammar



Year Level	03	05
Exceeding	1	1
Strong	11	15
Developing	14	18
Needs Additional Support	19	6
Absent/Withdrawn	3	1
Total	48	41

Data Source: Department for Education Assessment Data Holdings, 2024. If there are less than 6 students who sat NAPLAN in a school, no information will be shown. If a year level has less than 6 students, that year level will not be shown in NAPLAN results.

Spelling



Year Level	03	05
Exceeding	2	7
Strong	10	15
Developing	23	12
Needs Additional Support	10	6
Absent/Withdrawn	3	1
Total	48	41

Data Source: Department for Education Assessment Data Holdings, 2024. If there are less than 6 students who sat NAPLAN in a school, no information will be shown. If a year level has less than 6 students, that year level will not be shown in NAPLAN results.

Preschool Attendance

	Term 1	Term 2	Term 3	Term 4
2021 centre	93.9%	93.5%	92%	90.5%
2022 centre	91.7%	78.5%	86.6%	86.5%
2023 centre	92.9%	92.7%	87.3%	86.1%
2024 centre	68.9%		79.4%	

Based on attendances recorded in the two-week reference period each term. Data for eligible enrolments as described in the department's Enrolment policy. Attendance rates may differ to previous reporting with the transfer from calculations based on deemed attendance to actual attendance using booked hours divided by attended hours. Data Source: Department for Education Attendance Data, Semester 1 Report 2024. A blank cell indicates there we no students enrolled.

School Attendance

Year Level	2022	2023	2024
Reception	88.4%	89.2%	90.5%
Year 01	89.9%	88.7%	87.9%
Year 02	86.0%	92.3%	89.6%
Year 03	88.4%	91.2%	90.3%
Year 04	87.9%	87.1%	89.4%
Year 05	89.3%	89.0%	85.7%
Year 06	85.7%	91.4%	88.6%
Total	87.9%	89.9%	89.0%

Data Source: Department for Education Attendance Data, Semester 1 Report 2024. A blank cell indicates there we no students enrolled. 'Primary Other' includes students enrolled in specialised education options. 'Secondary Other' includes students who have already spent a year at Year 12 and elected to undertake further study at Year 12.

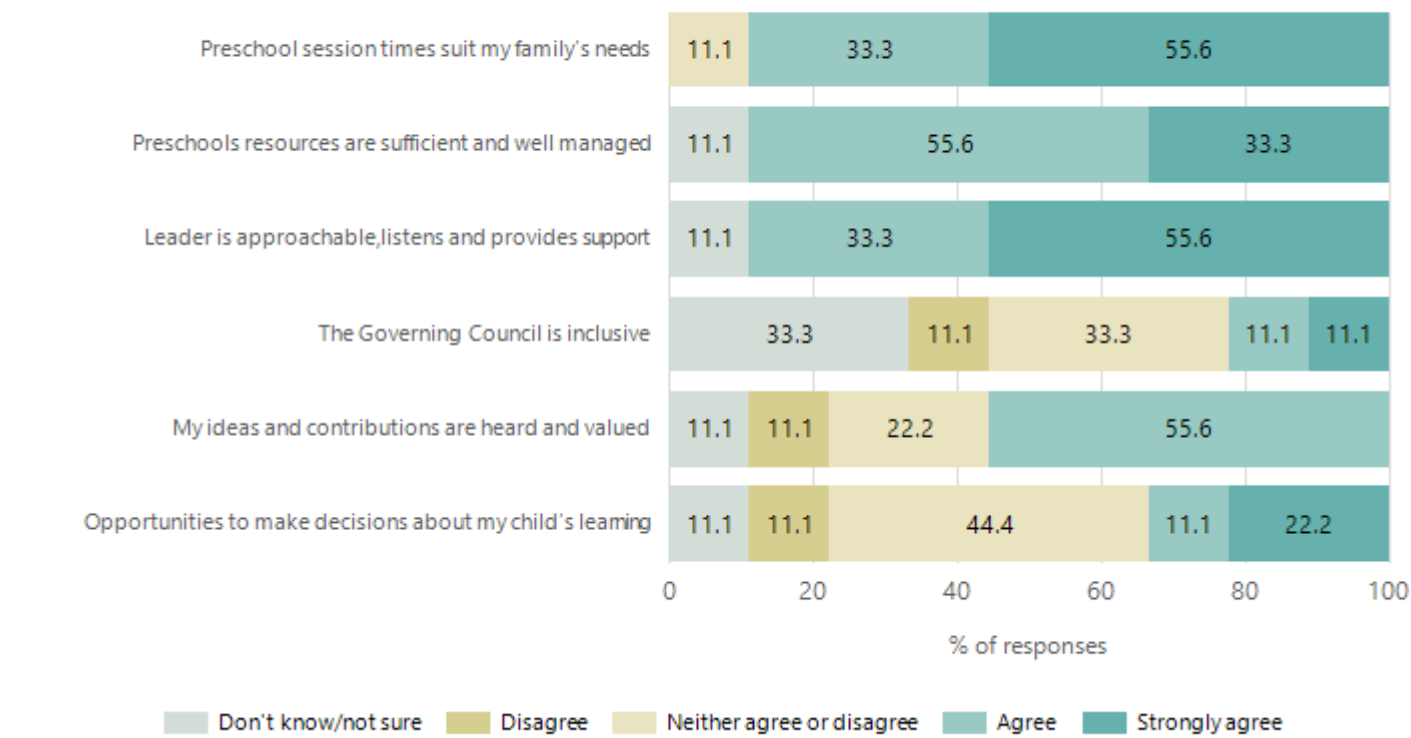
Attendance Comment

In South Australia, preschool attendance is not compulsory, but it is strongly encouraged. Preschool gives children the best opportunity to develop skills, which prepare them for school. These benefits include establishing positive routines and habits, friendships and connections as well as developing communication, problem-solving and creative skills. All children are entitled to access a preschool program over 4 terms the year before they start school.

In South Australia, all children and young people must be in school from 6 years to 16 years old. They must attend a government or non-government school full time. From age 16 to 17 however, young people must attend school or an approved learning program (such as an apprenticeship, traineeship, accredited course or university). Schools and parents must encourage and support students to come to school every day. Parents and caregivers must make sure their child is enrolled in a school, and attends school all day and everyday it is open, unless a child is sick or has an approved exemption. Teachers and leaders actively follow up when a student misses school, including recording all absences and non-attendance. All schools in South Australia have local attendance procedures governed under the Education and Children's Services Regulations 2020.

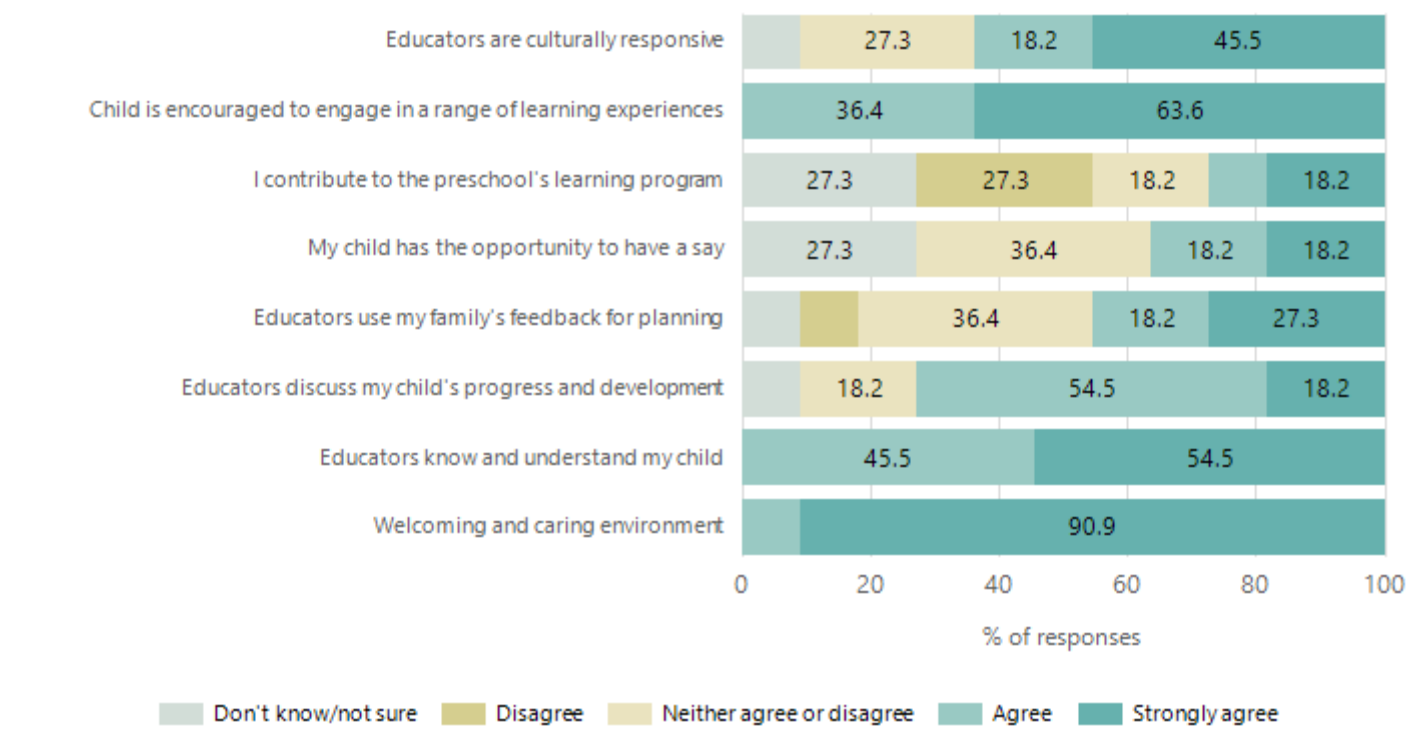
Preschool Family Opinion Survey

Governance, Leadership and Management



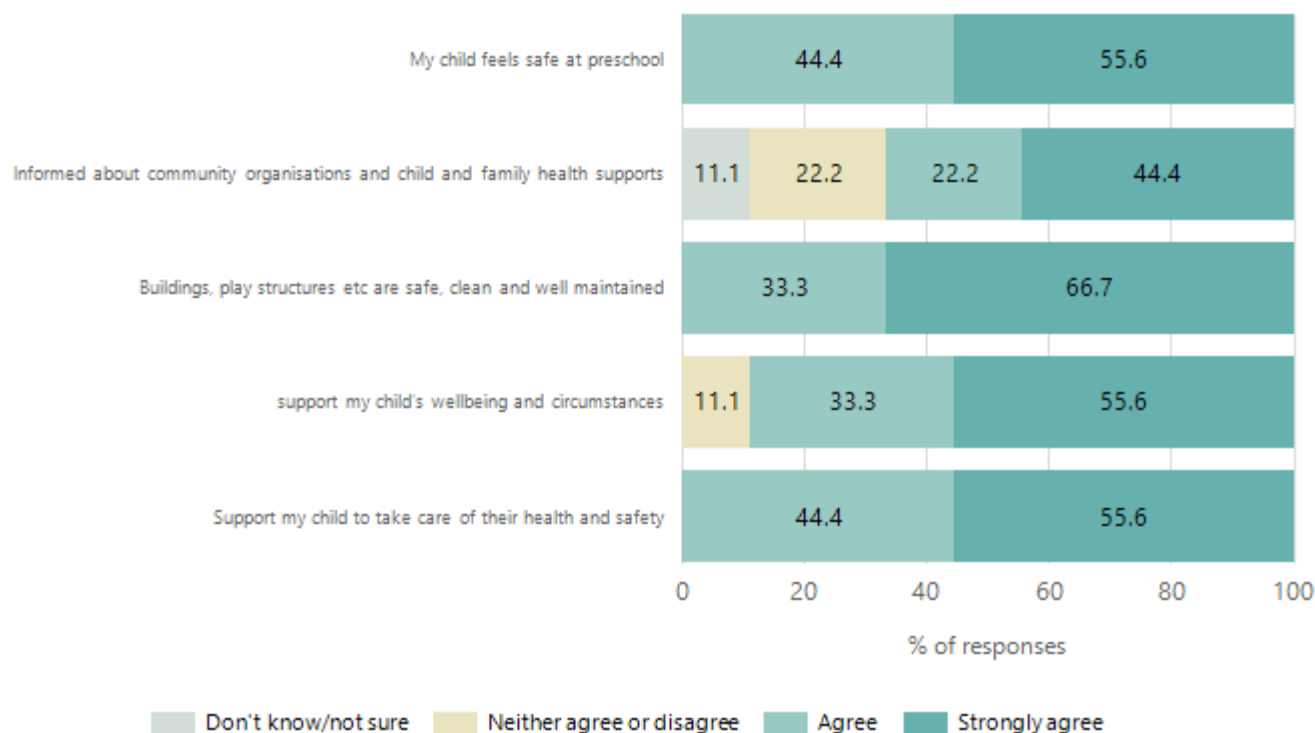
Data Source: 2024 Department for Education Preschool Family Opinions Survey, Term 3 2024.

Quality of Teaching and Learning



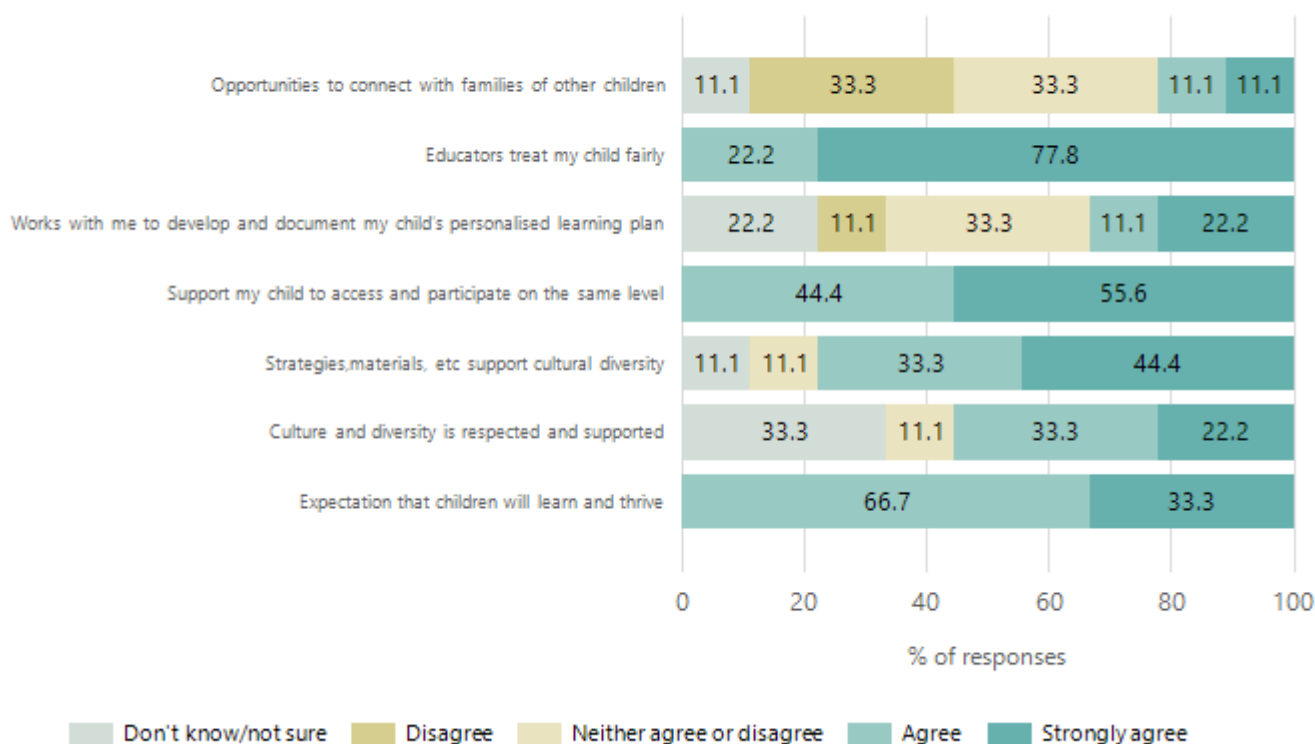
Data Source: 2024 Department for Education Preschool Family Opinions Survey, Term 3 2024.

Safety, Health and Wellbeing



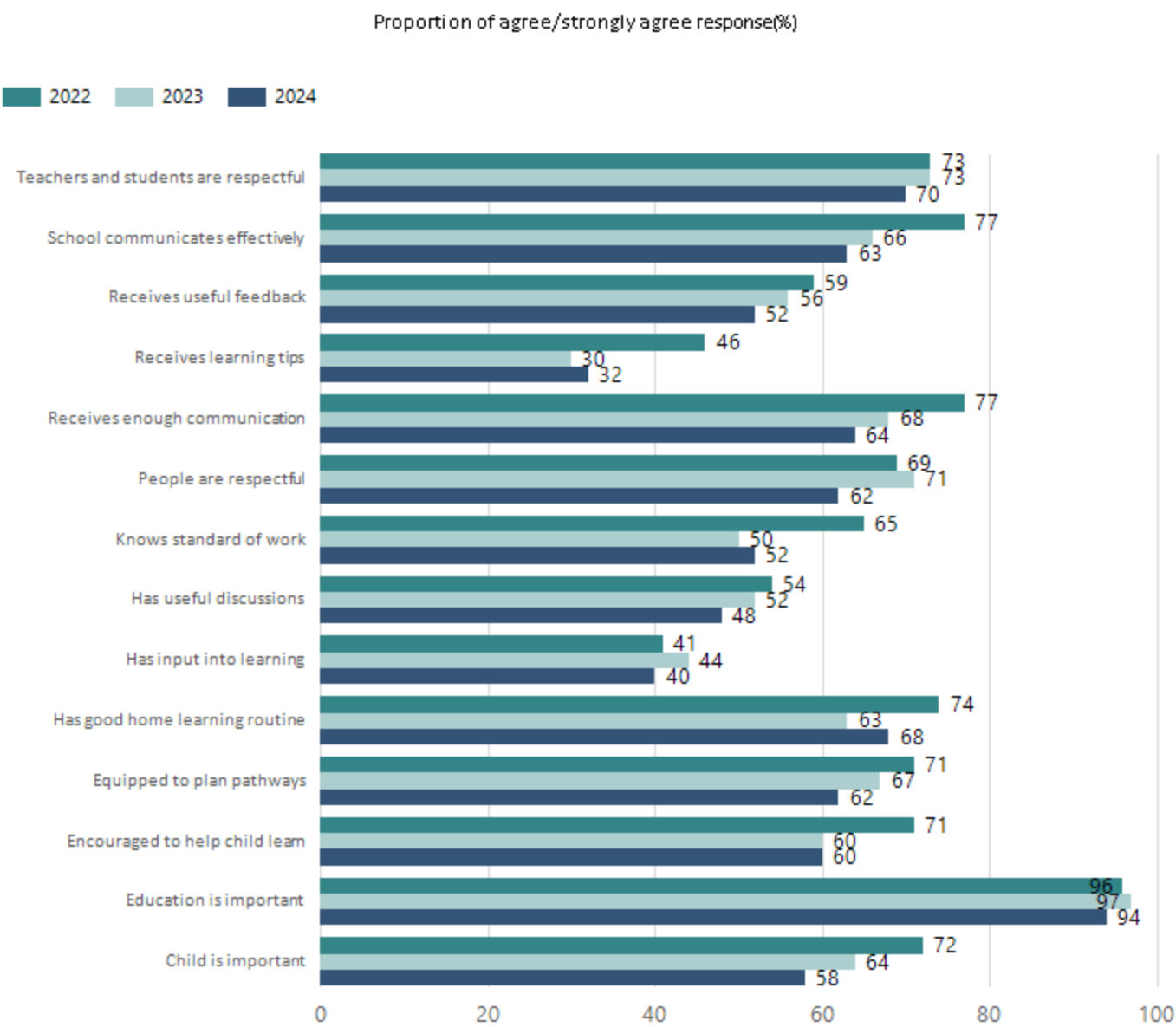
Data Source: 2024 Department for Education Preschool Family Opinions Survey, Term 3 2024.

Support and Inclusion



Data Source: 2024 Department for Education Preschool Family Opinions Survey, Term 3 2024.

School Parent Opinion Survey Results



Data Source: 2024 Department for Education Parent Opinions Survey, Term 3 2024.

Destination Schools

Feeder Schools (Site number - Name)	2022	2023	2024
0306 - Nairne School - Preschool and Primary	88.1%	81.8%	51.4%
9999 - Unknown	10.5%	10.4%	42.9%

Note: The data is collected in term 3. It does not reflect actual schools enrolled in by existing preschool children. A blank cell indicates there was no data for students enrolled.

Data Source: Department for Education Destination Data Report, 2024.

Intended Destination

Leave Reason	Number	%
IS - INTERSTATE	3	21.0%
NG - ATTENDING NON-GOV SCHOOL IN SA	1	7.0%
TG - TRANSFERRED TO SA GOVERNMENT SCHOOL	5	36.0%
U - UNKNOWN	3	21.0%
VI - LEFT SA FOR VIC	2	14.0%

Data Source: Department for Education Destination Data Report, 2024. Data extract term 3 2024. Data shows recorded destinations for students that left the school in the previous year. Data is uploaded by schools in term 3 and may not reflect final or total figures at time of report creation.

Highest Qualifications held by the teaching workforce and workforce composition

All teachers at this school are qualified and registered with the SA Teachers Registration Board

Qualification Level	Number of Qualifications
Bachelor's degrees or Diplomas	20
Postgraduate Qualifications	9

Data Source: Data extracted from Mandatory Workforce Information Collections as on the last pay date of June 2024. As self-reported by staff in the system.

Please note: Data includes staff who are Actively employed and on extended paid leave. Please note only the highest qualification of the Teaching staff is reported. Excludes any number of other certifications earned.

Workforce composition including indigenous staff

	Teaching Staff		Non-Teaching Staff	
	Indigenous	Non-Indigenous	Indigenous	Non-Indigenous
Full-Time Equivalents	0.0	25.4	0.0	17.2
Persons	0.0	29.0	0.0	28.0

Data Source: Data extracted from Mandatory Workforce Information Collection as on the last pay date of June 2024

Please note: Data includes staff who are actively employed and on extended paid leave. "Indigenous category" is self-reported by staff in the system.

Financial Statement

Funding Source	Amount
Grants: State	\$ 4,837,215.38
Grants: Commonwealth	\$ 14,200.00
Parent Contributions	\$ 192,351.17
Fund Raising	\$ 26,643.17
Other	\$ 333,017.08

Data Source: School supplied data.