

2023 annual report to the Community

Modbury School P-6 and Modbury Child Parent Centre

Modbury School P-6 number: 272

Modbury Child Parent Centre number: 1598

Partnership: Modbury



School principal:

Sara Slater

Date of endorsement:

13/02/2024



Government
of South Australia
Department for Education

Context Statement

Modbury School P-6 caters for students from R-6. At the time of this report, the enrolment in 2023 is 184. Modbury School P-6 is classified as Category 4 on the Department for Education Index of Educational Disadvantage. At the time of this report, the school population includes 8% Aboriginal students, 11% students with disabilities, 31% students with English as an additional language or dialect (EALD) funded background, 1% children/young people in care. Further information about the school is available on the school's website (including its context statement), as well as the My School website.

Information about Modbury Child Parent Centre is available on the centres website, as well as the Australian Children's Education and Care Quality Authority (ACECQA) website.

Governing Council Chairperson Report

The role of the Governing Council is absolutely critical within the school and its members should not underestimate the importance of this role.

We saw a change of leadership going into 2024 with the arrival of our new Principal, Sara Slater. Sara has brought her optimism and energy to our school and has made such a positive impact. We also welcomed Ali Curtis as our Deputy Principal, Ali has quickly developed strong connections with the children and is also making a very positive impact on the school.

The teachers and staff work extremely hard to provide high-quality education for our children, keeping connections fresh with individual touches that let our children know they are special and unique. The hard work and support of the school staff is unwavering, their passion for the school and the students is to be admired.

Thanks must also go to our families who provide the daily support needed to ensure our children learn and grow.

We farewelled our Year 6's and hope they are enjoying their start to 2024 in new schools enjoying incredible new opportunities.

Community connection is one of the flagships of our school and one of the reasons we see new families wanting to come here. The school community is a vital connection point for some families, especially those that are new to the area or even to the country – we love how richly diverse our school community is!

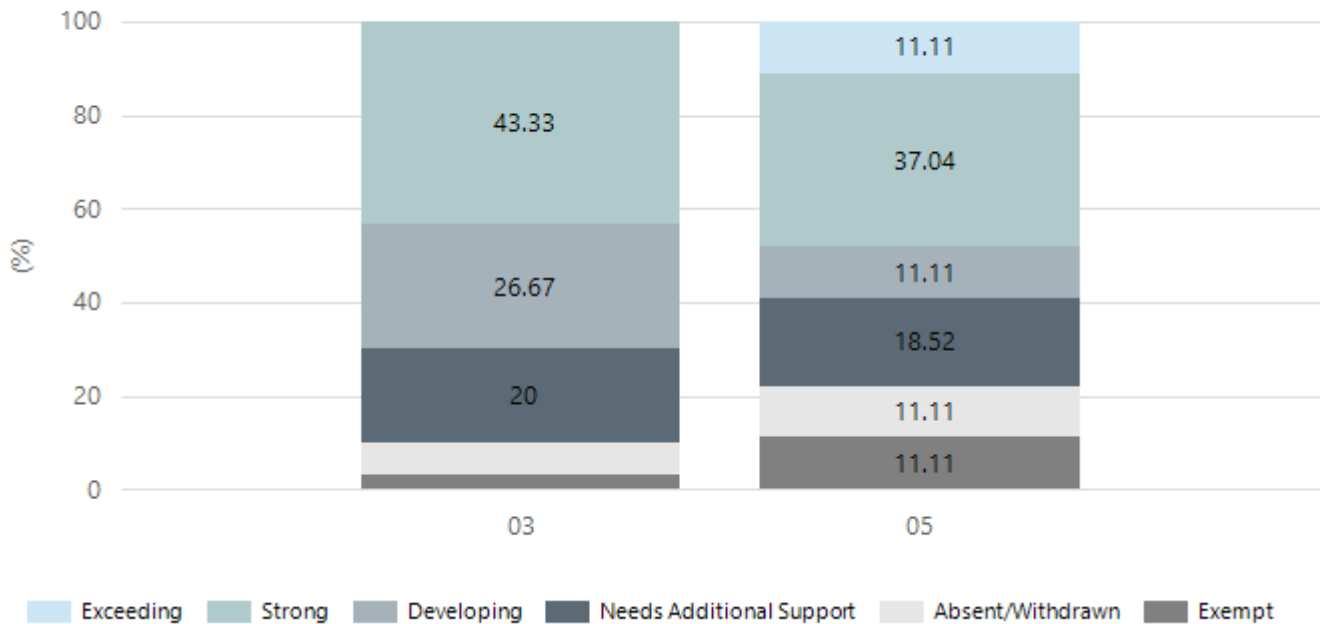
We will continue to build on our strengths to make sure that Modbury School remains a school of choice for many years to come.

Performance Summary

NAPLAN Proficiency

In 2023, the Australian Curriculum, Assessment and Reporting Authority (ACARA) - a Commonwealth Independent statutory authority - announced changes to NAPLAN performance reporting. This new way of reporting by ACARA that NAPLAN results from 2023 will not be comparable to previous years. The new approach replaces the previous numerical NAPLAN bands and the national minimum standard.

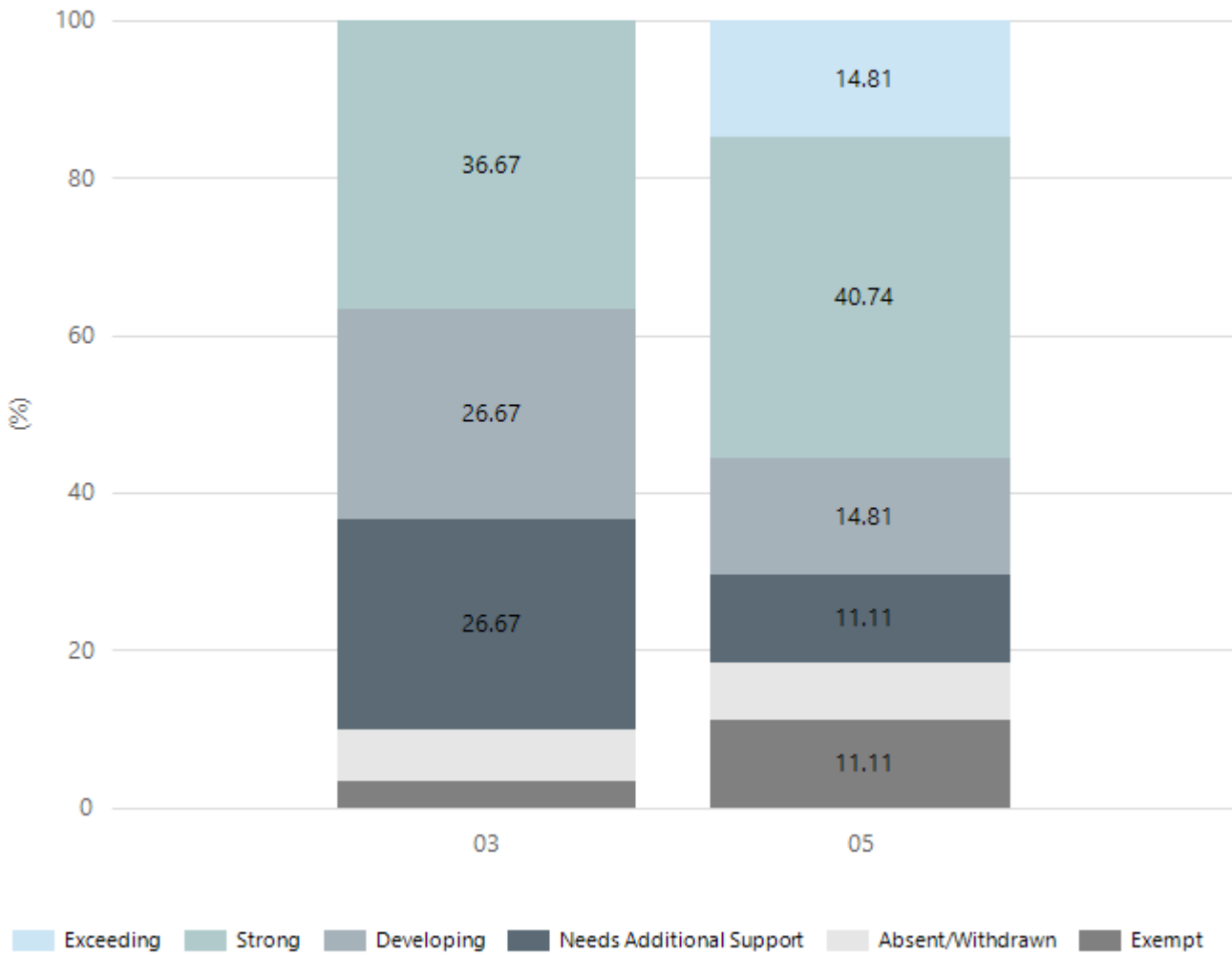
Numeracy



Year Level	03	05
Exceeding		3
Strong	13	10
Developing	8	3
Needs Additional Support	6	5
Absent/Withdrawn	2	3
Exempt	1	3
Total	30	27

Data Source: Department for Education Assessment Data Holdings, 2023. When there are less than six students in a cohort, no data is supplied.

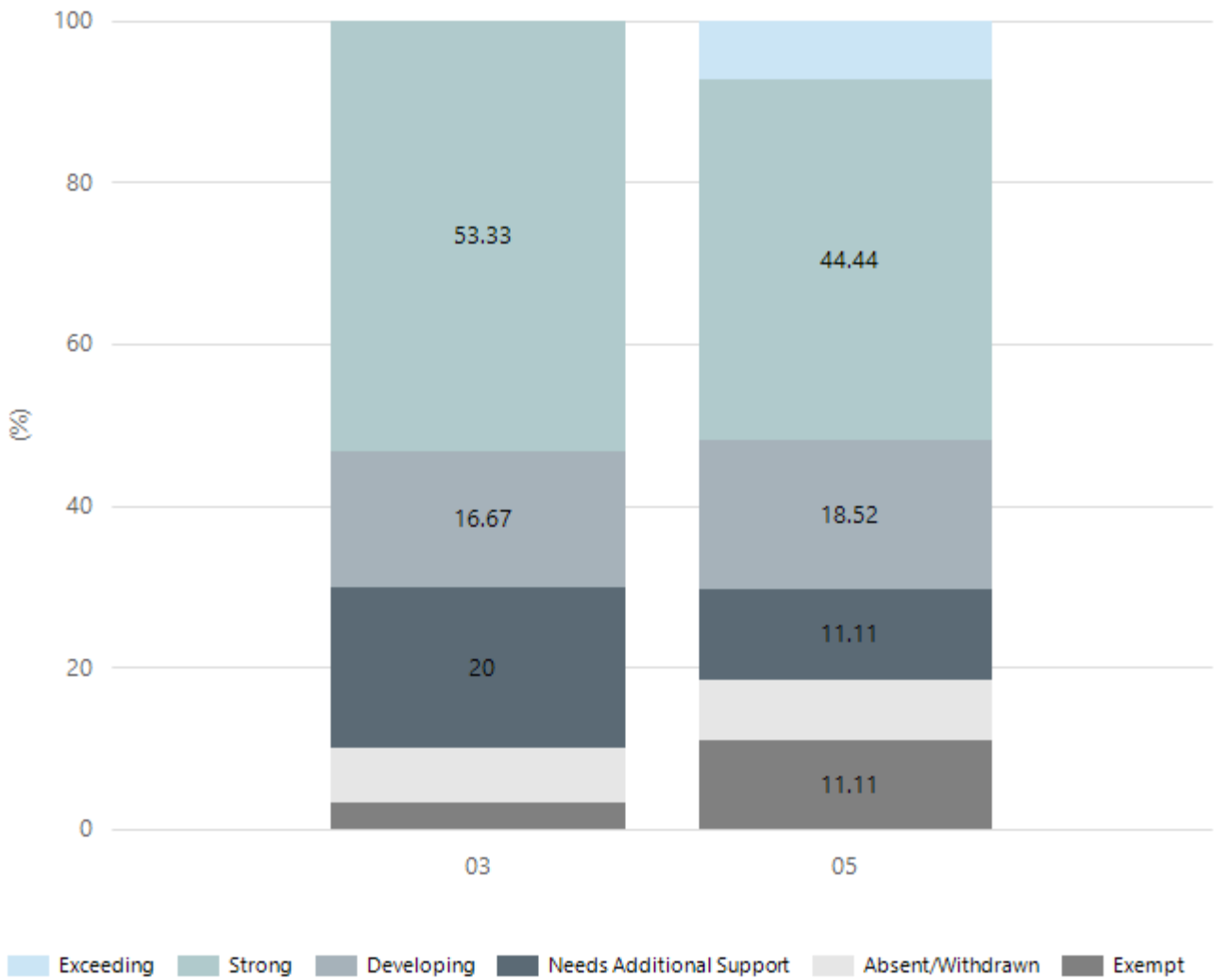
Reading



Year Level	03	05
Exceeding		4
Strong	11	11
Developing	8	4
Needs Additional Support	8	3
Absent/Withdrawn	2	2
Exempt	1	3
Total	30	27

Data Source: Department for Education Assessment Data Holdings, 2023. When there are less than six students in a cohort, no data is supplied.

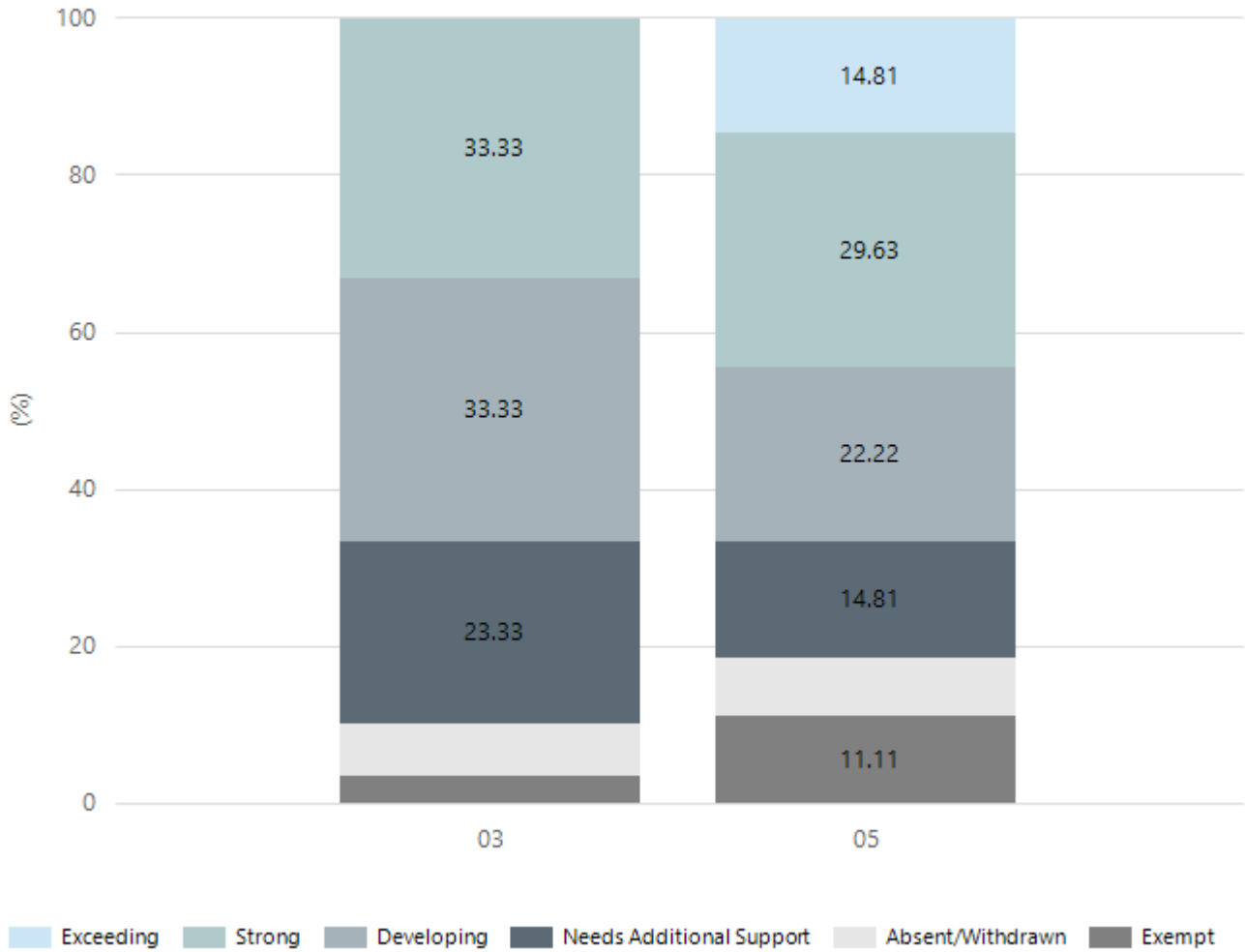
Writing



Year Level	03	05
Exceeding		2
Strong	16	12
Developing	5	5
Needs Additional Support	6	3
Absent/Withdrawn	2	2
Exempt	1	3
Total	30	27

Data Source: Department for Education Assessment Data Holdings, 2023. When there are less than six students in a cohort, no data is supplied.

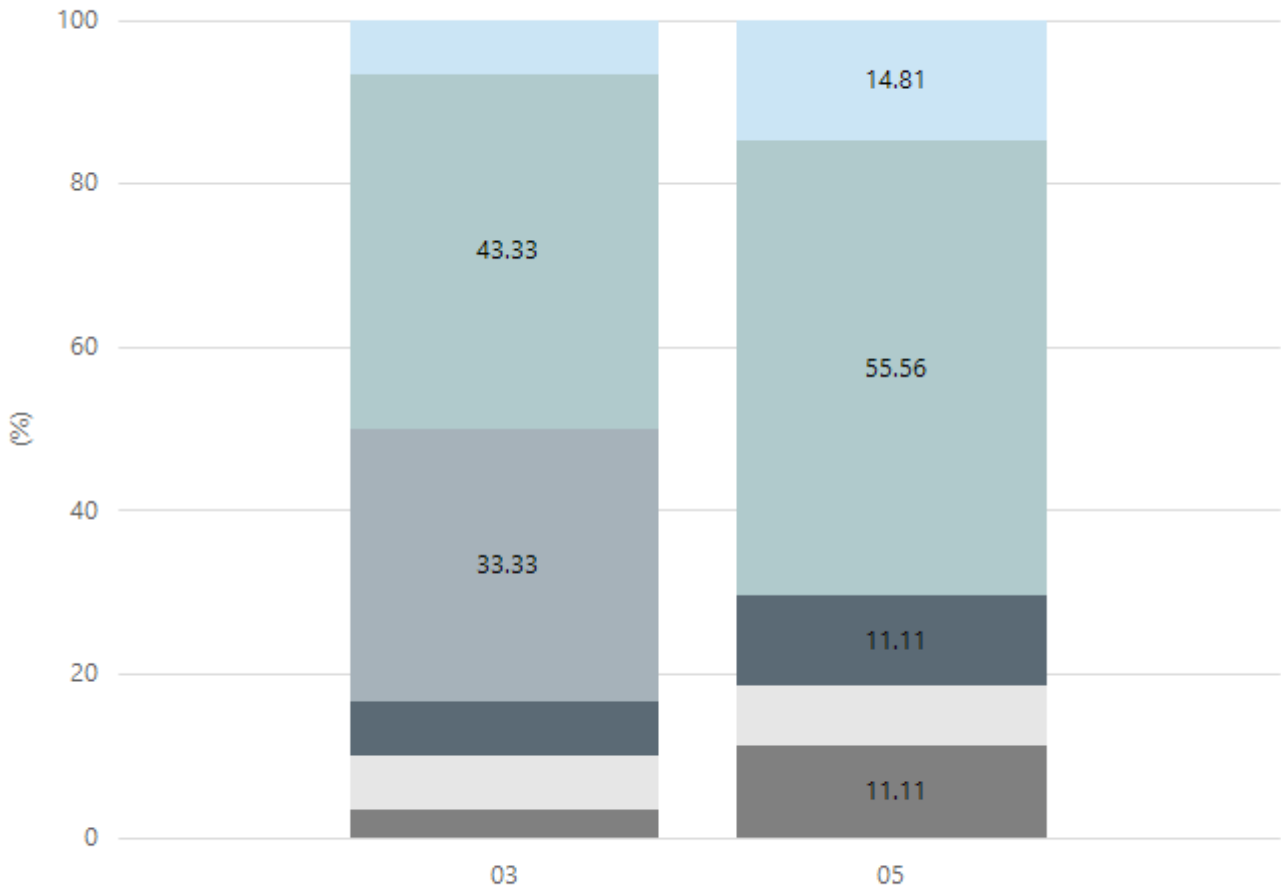
Grammar



Year Level	03	05
Exceeding		4
Strong	10	8
Developing	10	6
Needs Additional Support	7	4
Absent/Withdrawn	2	2
Exempt	1	3
Total	30	27

Data Source: Department for Education Assessment Data Holdings, 2023. When there are less than six students in a cohort, no data is supplied.

Spelling



■ Exceeding
 ■ Strong
 ■ Developing
 ■ Needs Additional Support
 ■ Absent/Withdrawn
 ■ Exempt

Year Level	03	05
Exceeding	2	4
Strong	13	15
Developing	10	
Needs Additional Support	2	3
Absent/Withdrawn	2	2
Exempt	1	3
Total	30	27

Data Source: Department for Education Assessment Data Holdings, 2023. When there are less than six students in a cohort, no data is supplied.

Preschool Attendance

	Term 1	Term 2	Term 3	Term 4
2020 centre	91.2%	88.3%	92%	78.8%
2021 centre	91%	96%	92%	88.2%
2022 centre	82%	61%	85.5%	67.8%
2023 centre	82.4%	90.5%	95.3%	86%
2020 state	89.1%	81.8%	84.6%	85.8%
2021 state	87.3%	85.3%	87.1%	84.5%
2022 state	83.6%	77.6%	77.9%	77.8%
2023 state	85.4%	82.9%	83.4%	81.4%

Based on attendances recorded in the two-week reference period each term. Data for eligible enrolments as described in the department's Enrolment policy. Attendance rates may differ to previous reporting with the transfer from calculations based on deemed attendance to actual attendance using booked hours divided by attended hours. Data Source: Department for Education Attendance Data, Semester 1 Report 2023. A blank cell indicates there we no students enrolled.

Note: Term 2 2020 data may not be available for all preschools.

School Attendance

Year Level	2021	2022	2023
Reception	88.7%	80.0%	87.4%
Year 01	85.8%	78.2%	85.3%
Year 02	87.9%	79.0%	86.0%
Year 03	87.1%	81.0%	85.1%
Year 04	90.9%	80.4%	85.0%
Year 05	91.5%	83.2%	81.2%
Year 06	95.3%	79.6%	83.5%
Year 07	91.1%		
Primary Other	88.6%	78.1%	75.3%
Total	89.7%	79.9%	83.6%

Data Source: Department for Education Attendance Data, Semester 1 Report 2023. A blank cell indicates there we no students enrolled. 'Primary Other' includes students enrolled in specialised education options. 'Secondary Other' includes students who have already spent a year at Year 12 and elected to undertake further study at Year 12.

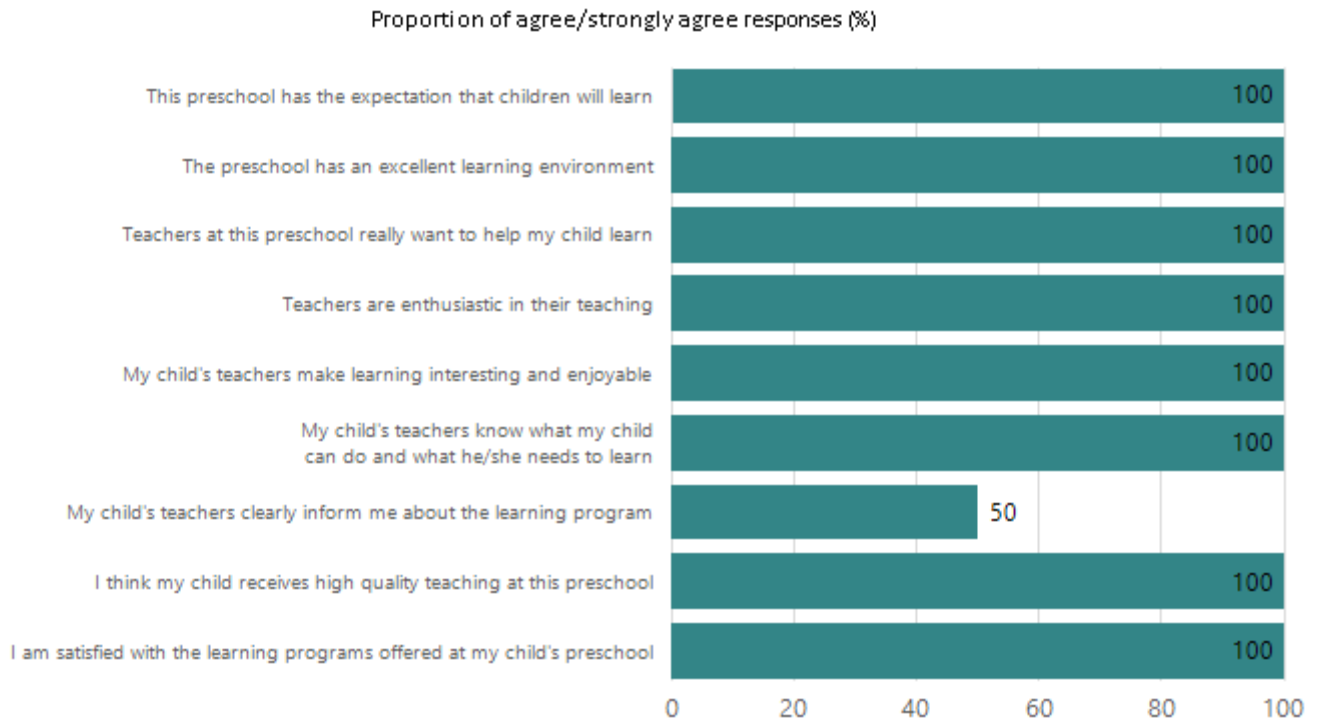
Attendance Comment

In South Australia, preschool attendance is not compulsory, but it is strongly encouraged. Preschool gives children the best opportunity to develop skills, which prepare them for school. These benefits include establishing positive routines and habits, friendships and connections as well as developing communication, problem-solving and creative skills. All children are entitled to access a preschool program over 4 terms the year before they start school.

In South Australia, all children and young people must be in school from 6 years to 16 years old. They must attend a government or non-government school full time. From age 16 to 17 however, young people must attend school or an approved learning program (such as an apprenticeship, traineeship, accredited course or university). Schools and parents must encourage and support students to come to school every day. Parents and caregivers must make sure their child is enrolled in a school, and attends school all day and everyday it is open, unless a child is sick or has an approved exemption. Teachers and leaders actively follow up when a student misses school, including recording all absences and non-attendance. All schools in South Australia have local attendance procedures governed under the Education and Children's Services Regulations 2020.

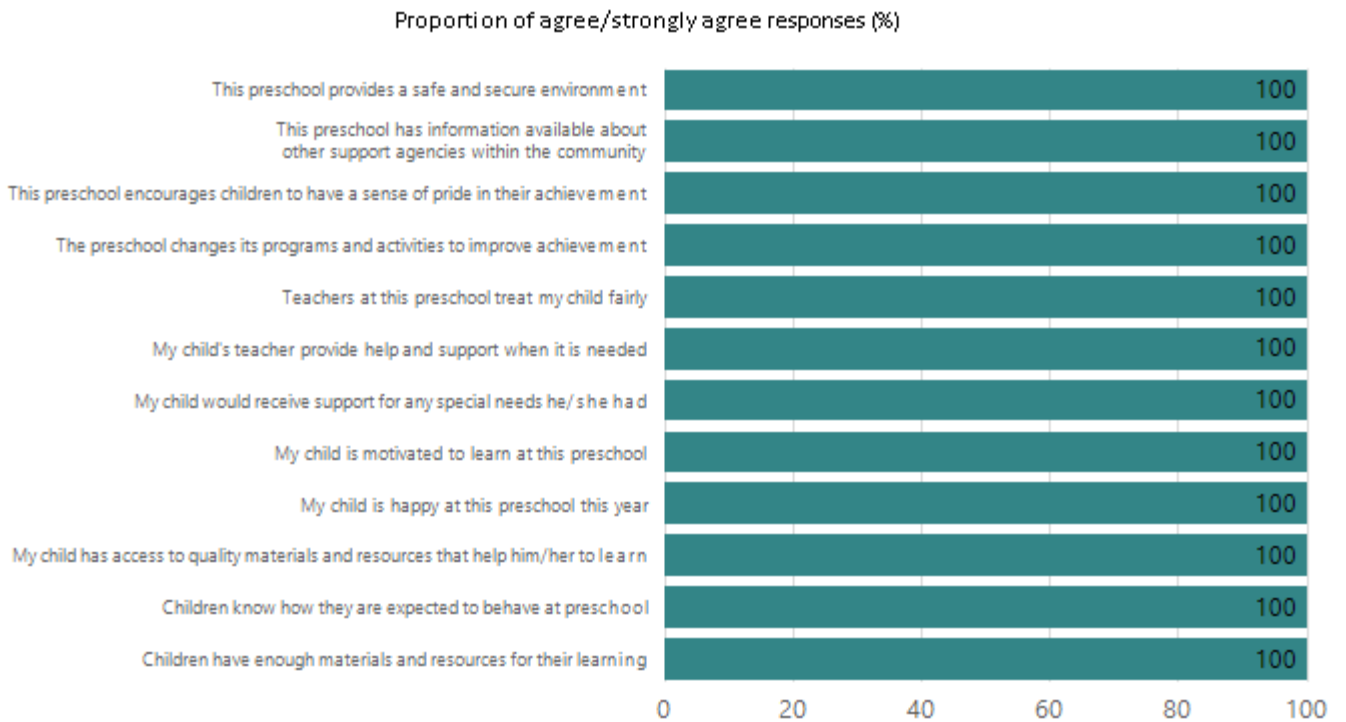
Preschool Family Opinion Survey

Quality of Teaching and Learning



Data Source: 2023 Department for Education Preschool Family Opinions Survey, Term 3 2023.

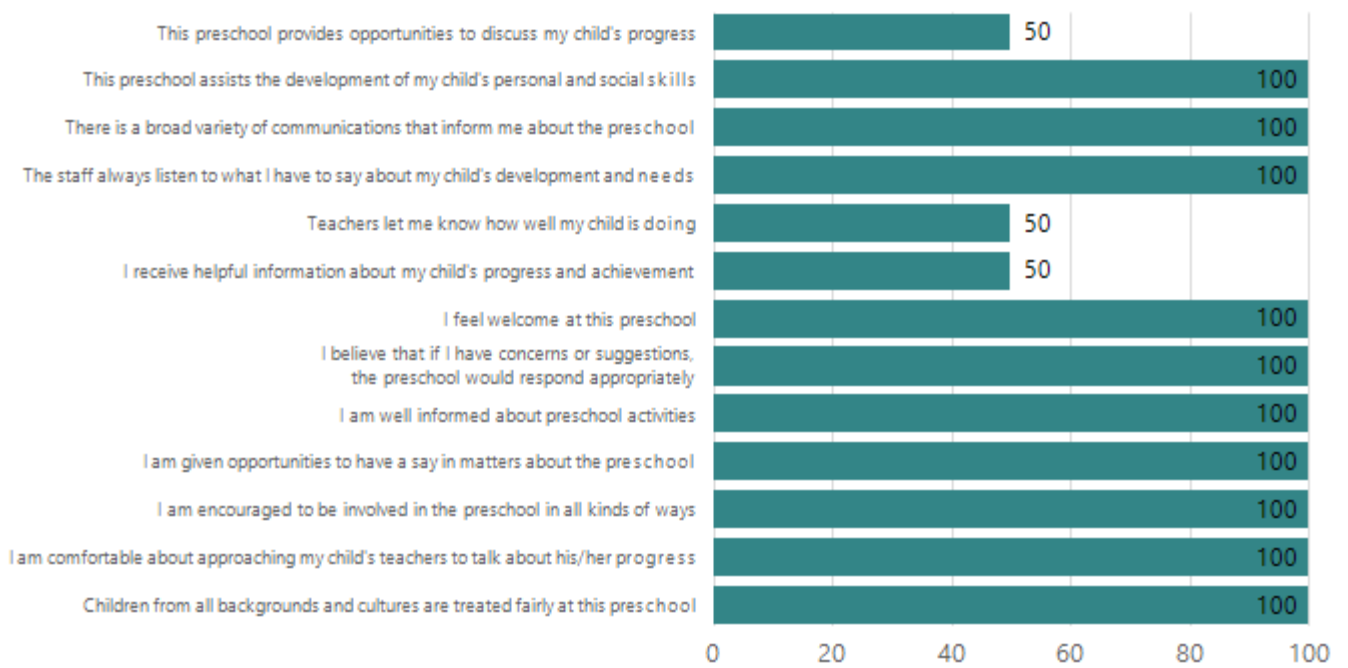
Support of Learning



Data Source: 2023 Department for Education Preschool Family Opinions Survey, Term 3 2023.

Relationships and Communication

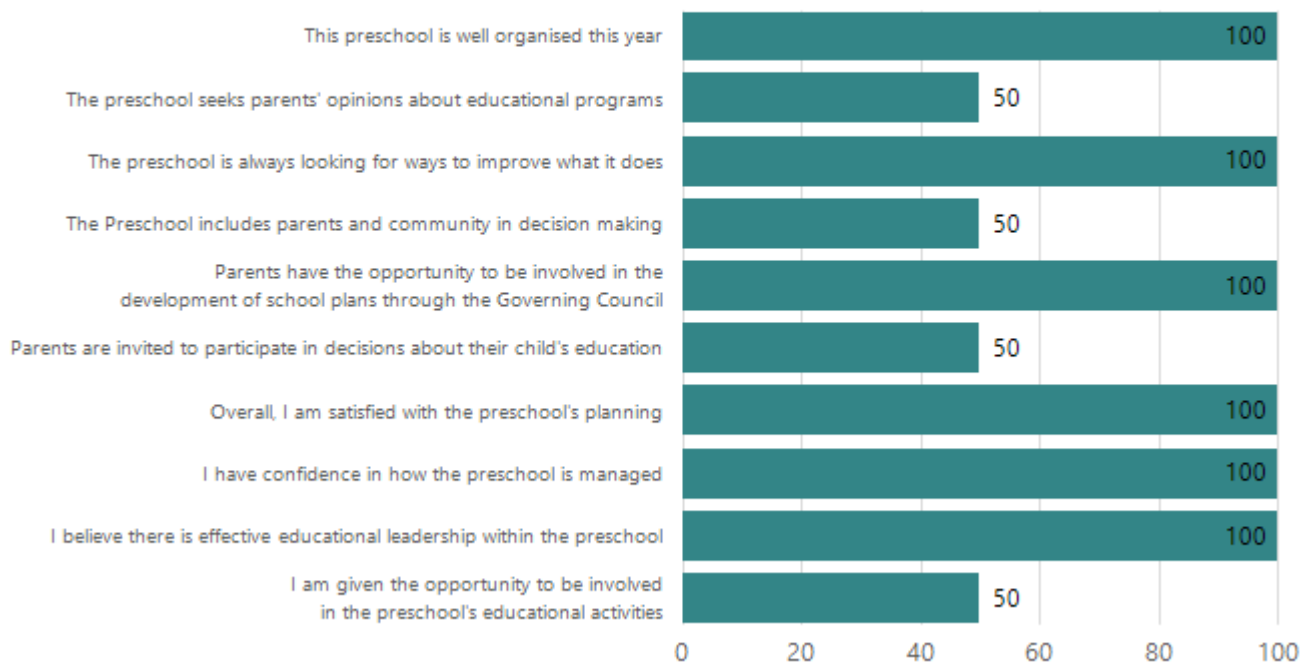
Proportion of agree/strongly agree responses (%)



Data Source: 2023 Department for Education Preschool Family Opinions Survey, Term 3 2023.

Leadership and Decision Making

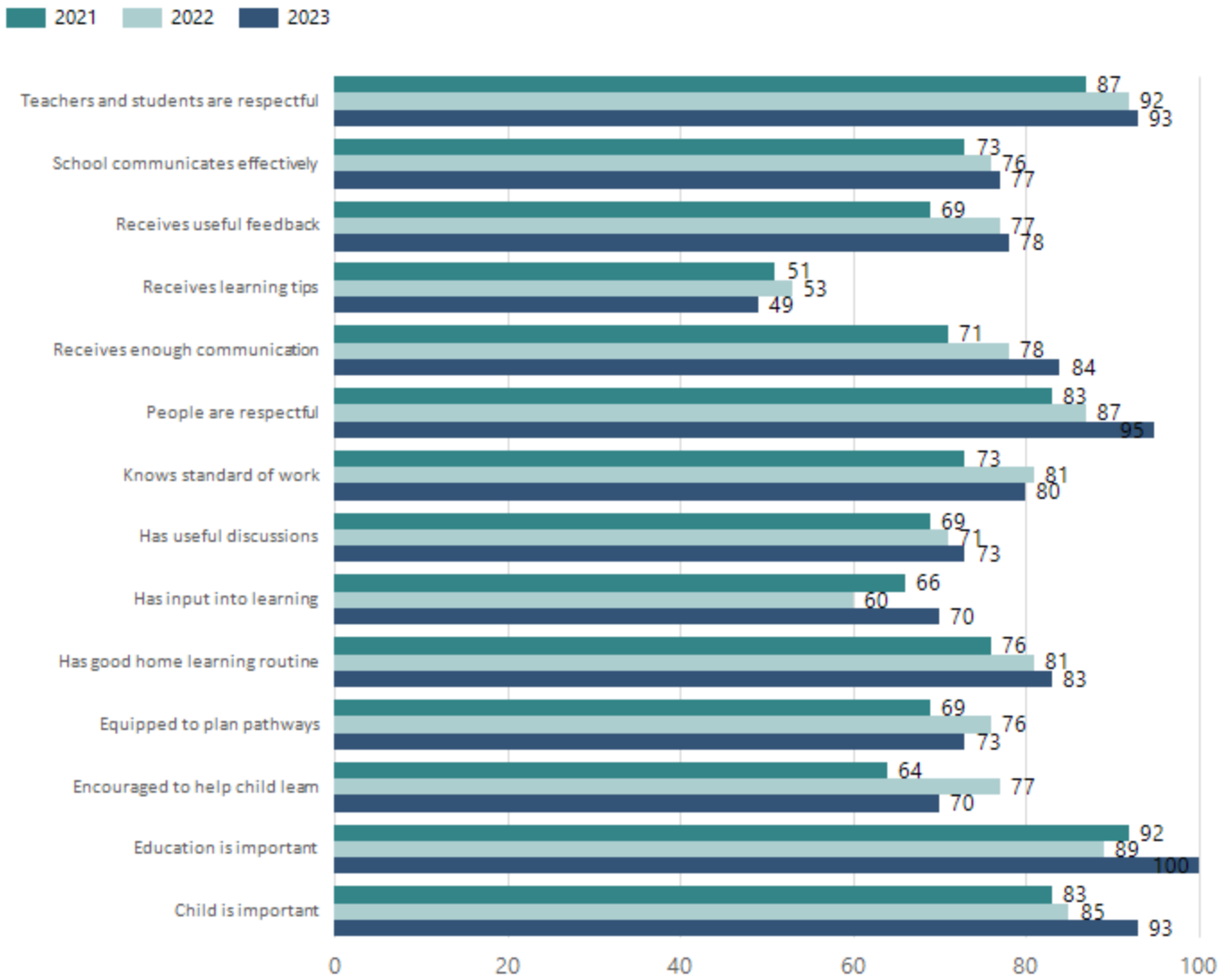
Proportion of agree/strongly agree responses (%)



Data Source: 2023 Department for Education Preschool Family Opinions Survey, Term 3 2023.

Parent Opinion Survey Results

Proportion of agree/strongly agree response(%)



Data Source: 2023 Department for Education Parent Opinions Survey, Term 3 2023.

Destination Schools

Feeder Schools (Site number - Name)	2021	2022	2023
0272 - Modbury School P-6	83.3%	95.0%	96.0%
1430 - The Heights School		5.0%	
8364 - St Paul's College	4.2%		
9115 - Prescott Primary Northern	8.3%		
9441 - Pinnacle College - Golden Grove Campus	4.2%		
9999 - Unknown			4.0%

Note: The data is collected in term 3. It does not reflect actual schools enrolled in by existing preschool children. A blank cell indicates there was no data for students enrolled.

Data Source: Department for Education Destination Data Report, 2023.

Intended Destination

Leave Reason	Number	%
NG - ATTENDING NON-GOV SCHOOL IN SA	4	12.0%
NT - LEFT SA FOR NT	2	6.0%
QL - LEFT SA FOR QLD	1	3.0%
TG - TRANSFERRED TO SA GOVERNMENT SCHOOL	26	79.0%

Data Source: Department for Education Destination Data Report, 2023. Data extract term 3 2023. Data shows recorded destinations for students that left the school in the previous year. Data is uploaded by schools in term 3 and may not reflect final or total figures at time of report creation.

Highest Qualifications held by the teaching workforce and workforce composition

All teachers at this school are qualified and registered with the SA Teachers Registration Board.

Qualification Level	Number of Qualifications
Bachelor's degrees or Diplomas	15
Postgraduate Qualifications	5

Data Source: Data extracted from Mandatory Workforce Information Collections as on the last pay date of June 2023. As self-reported by staff in the system.

Please note: Data includes staff who are Actively employed and on extended paid leave. Please note only the highest qualification of the Teaching staff is reported. Excludes any number of other certifications earned.

Workforce composition including indigenous staff

	Teaching Staff		Non-Teaching Staff	
	Indigenous	Non-Indigenous	Indigenous	Non-Indigenous
Full-Time Equivalents	0.0	16.9	0.0	7.9
Persons	0.0	20.0	0.0	14.0

Data Source: Data extracted from Mandatory Workforce Information Collection as on the last pay date of June 2023.

Please note: Data includes staff who are actively employed and on extended paid leave. "Indigenous category" is self-reported by staff in the system.

Financial Statement

Funding Source	Amount
Grants: State	2991256.40
Grants: Commonwealth	20476.58
Parent Contributions	44286.75
Fund Raising	16060.80
Other	0.0

Data Source: School supplied data.