

2023 annual report to the Community

Hendon Primary School and Hendon Preschool

Hendon Primary School number: 670

Hendon Preschool number: 1585

Partnership: Western Adelaide Shores



School principal:

Tonia Noble

Signature

Date of endorsement:

13/02/2024



Context Statement

Hendon Primary School caters for students from R-6. At the time of this report, the enrolment in 2023 is 297. Hendon Primary School is classified as Category 3 on the Department for Education Index of Educational Disadvantage. At the time of this report, the school population includes 12% Aboriginal students, 11% students with disabilities, 12% students with English as an additional language or dialect (EALD) funded background, 2% children/young people in care. Further information about the school is available on the school's website (including its context statement), as well as the My School website.

Information about Hendon Preschool is available on the centres website, as well as the Australian Childrens Education and Care Quality Authority (ACECQA) website.

2023 Governing Council Chairperson Report

2023 saw us welcome a new Principal, Tonia Noble. We farewelled the Deputy Anthony McIver who moved on to a Principal role at a small school in the Adelaide Hills.

Term 2 saw us welcome a new Deputy Reece Campbell and the beginning of many conversations around the desired directions for reading improvement at Hendon, including the proposed introduction of InitialLit in 2024, Foundation to year 3. As the year progressed, we had further discussions around the implementation and plans for targeted reading intervention and the close work of the school with the Departments Literacy Guarantee Coach and the schools buy in Speech Pathologist.

2023 saw the ending of some era's and the welcoming of some new.

With the resignation of the schools Canteen Manager, who moved on to a new position closer to home we made the decision to outsource the supply of lunches to the local Westside Deli. The school had long made active attempts to maintain the viability of the canteen, but following advice from our financial processes we decided that this was the best decision moving forward.

Our Sports day and End of Year Concert, traditional events were well received by our school's community, as were the new fundraising events that were introduced. The Cookie Dough fundraiser proved very profitable, and this combined with the Fundraising Committees other endeavors saw the purchase of a long-awaited climbing net to replace the old flying fox in the playground.

Another new event/fundraiser introduced was the Colour Run, we linked this to the celebration of the school's 70th birthday – Rock n Roll style! The Colour Run was well received by everyone, and parents enjoyed joining in on the day. We shared the Fundraising Committees plans for other events in 2024 and we are excited to see how they unfold and the children's wish list for how we might use the money raised.

Performance Summary

NAPLAN Proficiency

In this annual report, we address the comprehensive review and strategic response to learning data sets across our school. We note a downward trend in certain metrics, notably the Phonics Screening Check for Year 1 students and students requiring support as identified by NAPLAN data. There has been a disproportionate number of students performing below reading proficiency levels, compared to Portfolio schools, and various benchmarks. To counteract these challenges, we emphasise the prioritisation of expert teacher knowledge, focusing on 'curriculum pedagogy and assessment' methodologies. Going forward, our commitment to evidence-based practices and consistent, evidence-based programs informed by the latest research, underscores our dedication to student success. We are encouraged by the emergence of positive impacts in data sets reflecting improvements in achievement, signaling progress in our endeavors.

In 2023, the Australian Curriculum, Assessment and Reporting Authority (ACARA) - a Commonwealth Independent statutory authority - announced changes to NAPLAN performance reporting. This new way of reporting by ACARA that NAPLAN results from 2023 will not be comparable to previous years. The new approach replaces the previous numerical NAPLAN bands and the national minimum standard.

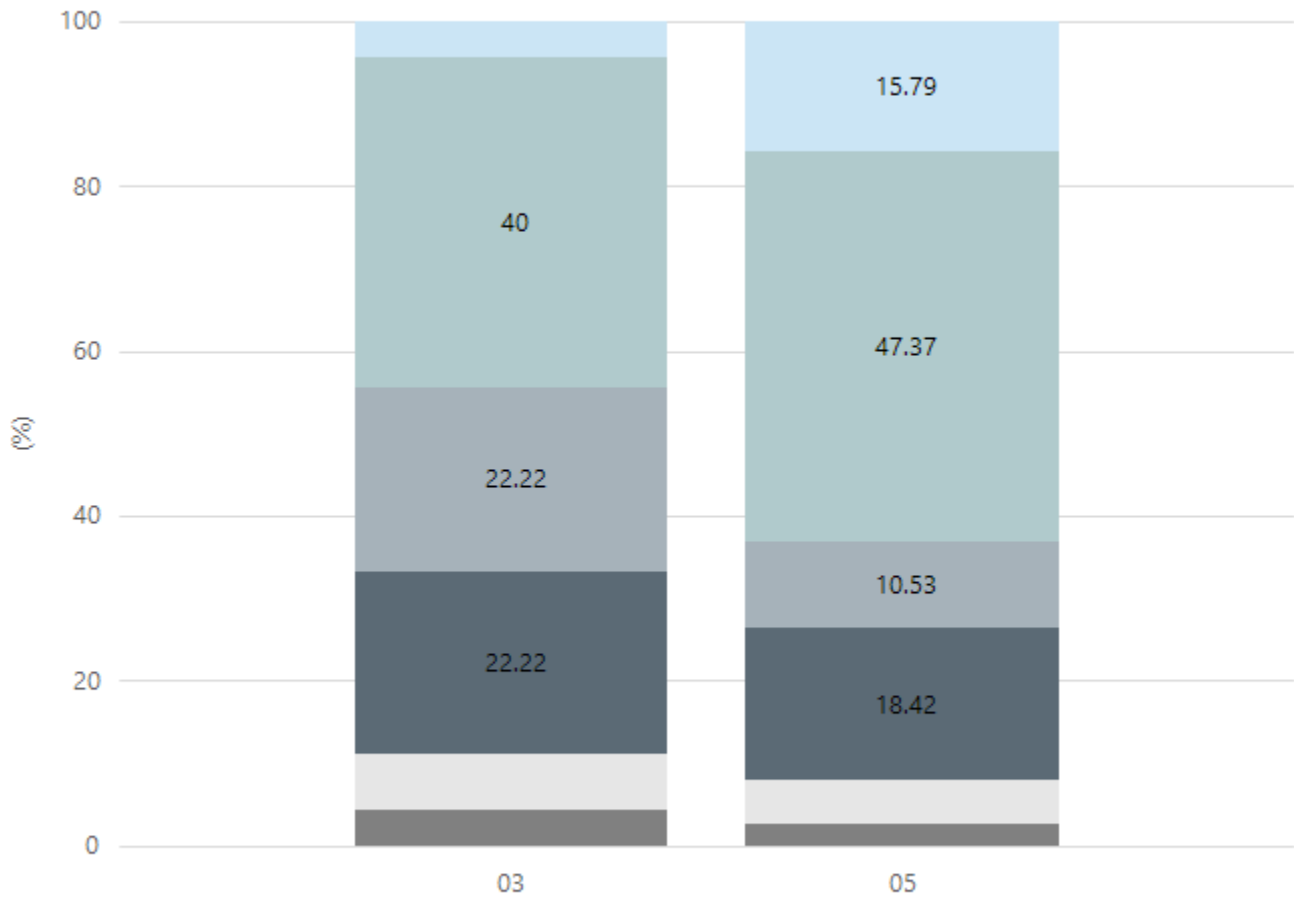
Numeracy



Year Level	03	05
Exceeding	3	1
Strong	16	15
Developing	10	8
Needs Additional Support	11	9
Absent/Withdrawn	3	4
Exempt	2	1
Total	45	38

Data Source: Department for Education Assessment Data Holdings, 2023. When there are less than six students in a cohort, no data is supplied.

Reading

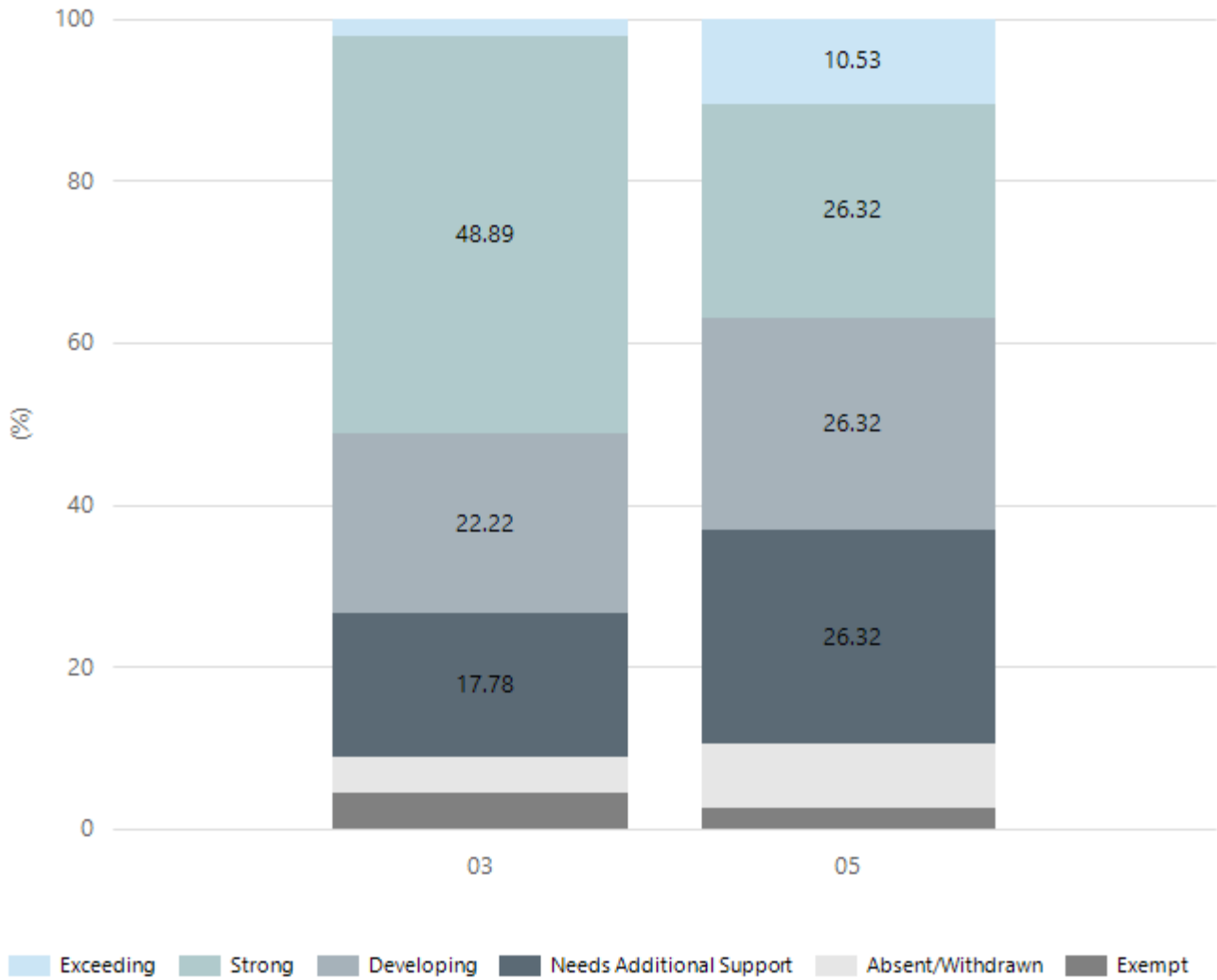


Exceeding Strong Developing Needs Additional Support Absent/Withdrawn Exempt

Year Level	03	05
Exceeding	2	6
Strong	18	18
Developing	10	4
Needs Additional Support	10	7
Absent/Withdrawn	3	2
Exempt	2	1
Total	45	38

Data Source: Department for Education Assessment Data Holdings, 2023. When there are less than six students in a cohort, no data is supplied.

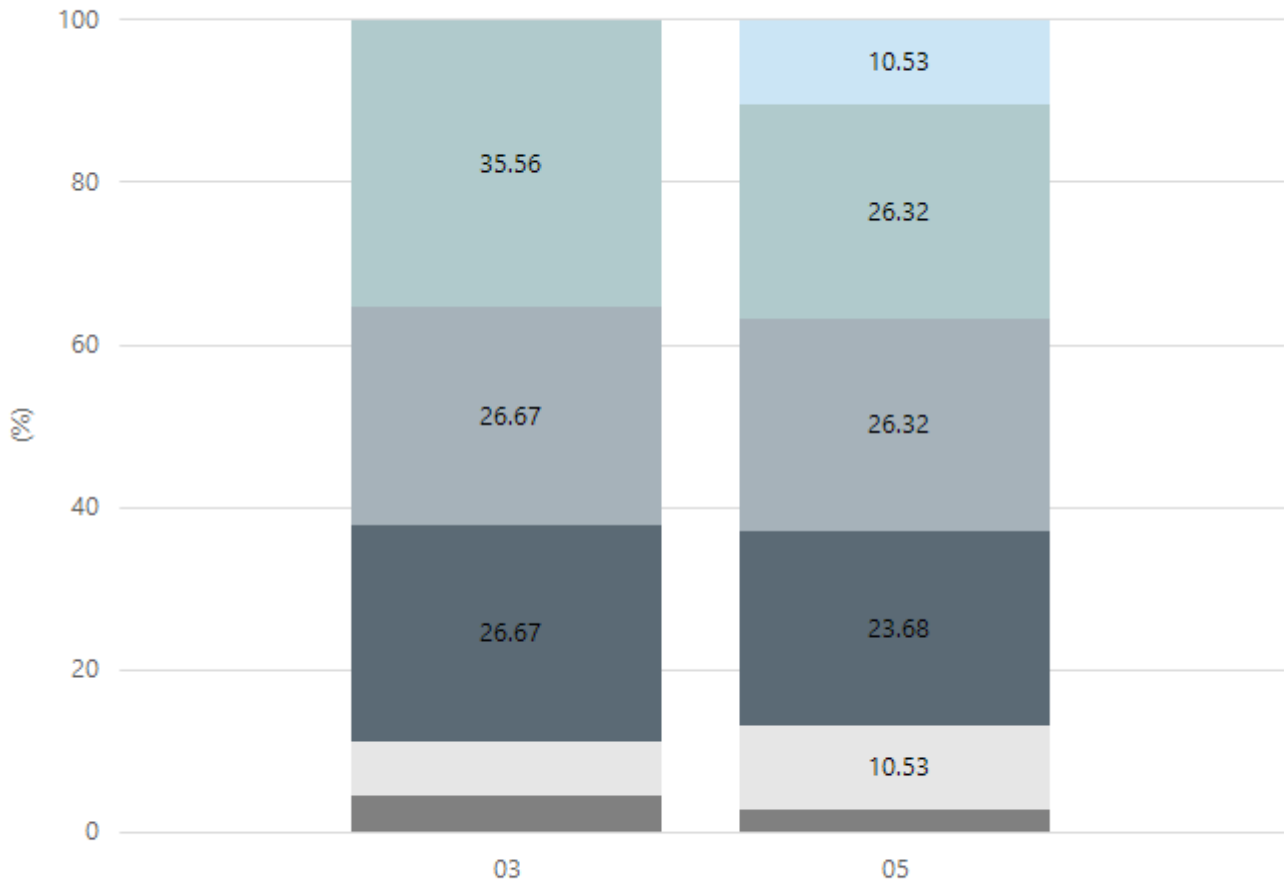
Writing



Year Level	03	05
Exceeding	1	4
Strong	22	10
Developing	10	10
Needs Additional Support	8	10
Absent/Withdrawn	2	3
Exempt	2	1
Total	45	38

Data Source: Department for Education Assessment Data Holdings, 2023. When there are less than six students in a cohort, no data is supplied.

Grammar

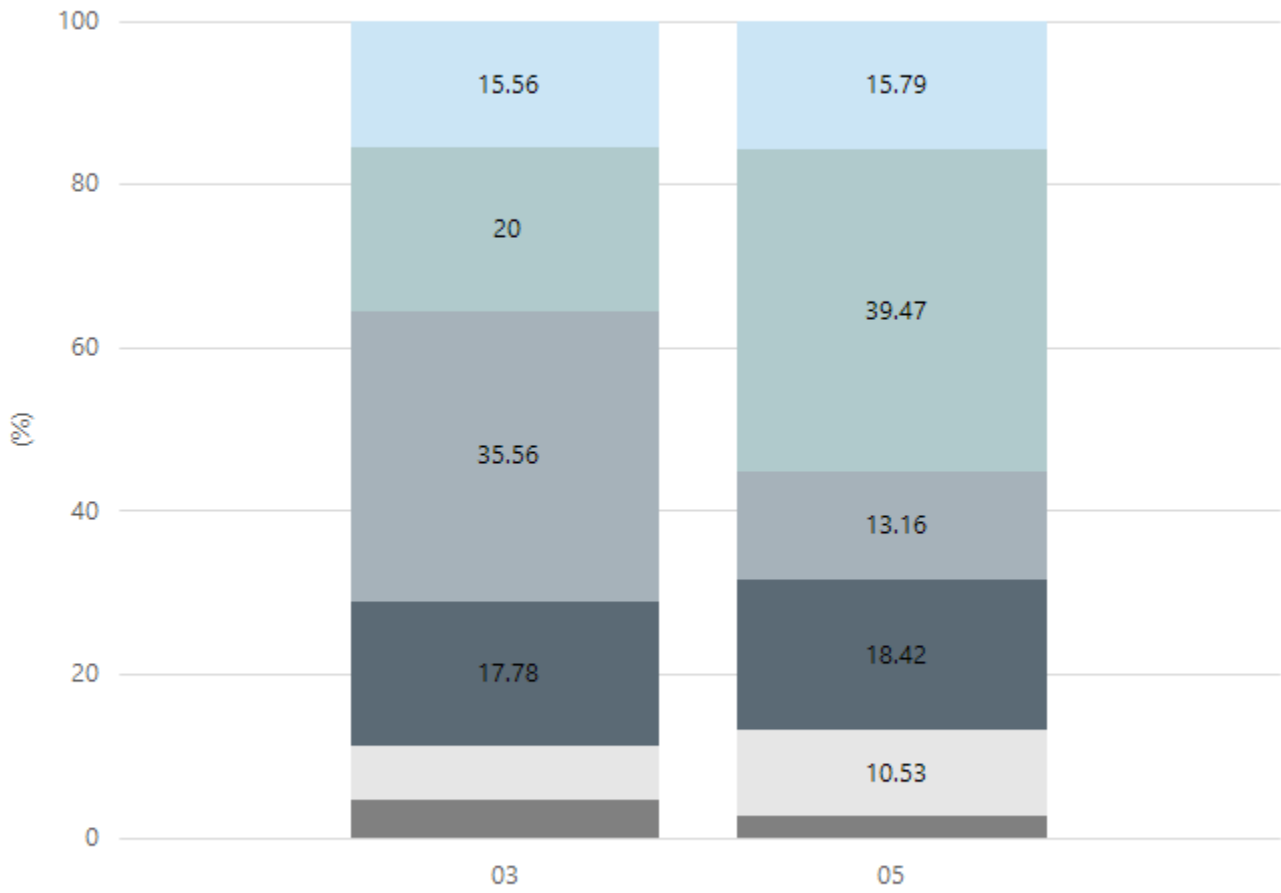


■ Exceeding
 ■ Strong
 ■ Developing
 ■ Needs Additional Support
 ■ Absent/Withdrawn
 ■ Exempt

Year Level	03	05
Exceeding		4
Strong	16	10
Developing	12	10
Needs Additional Support	12	9
Absent/Withdrawn	3	4
Exempt	2	1
Total	45	38

Data Source: Department for Education Assessment Data Holdings, 2023. When there are less than six students in a cohort, no data is supplied.

Spelling



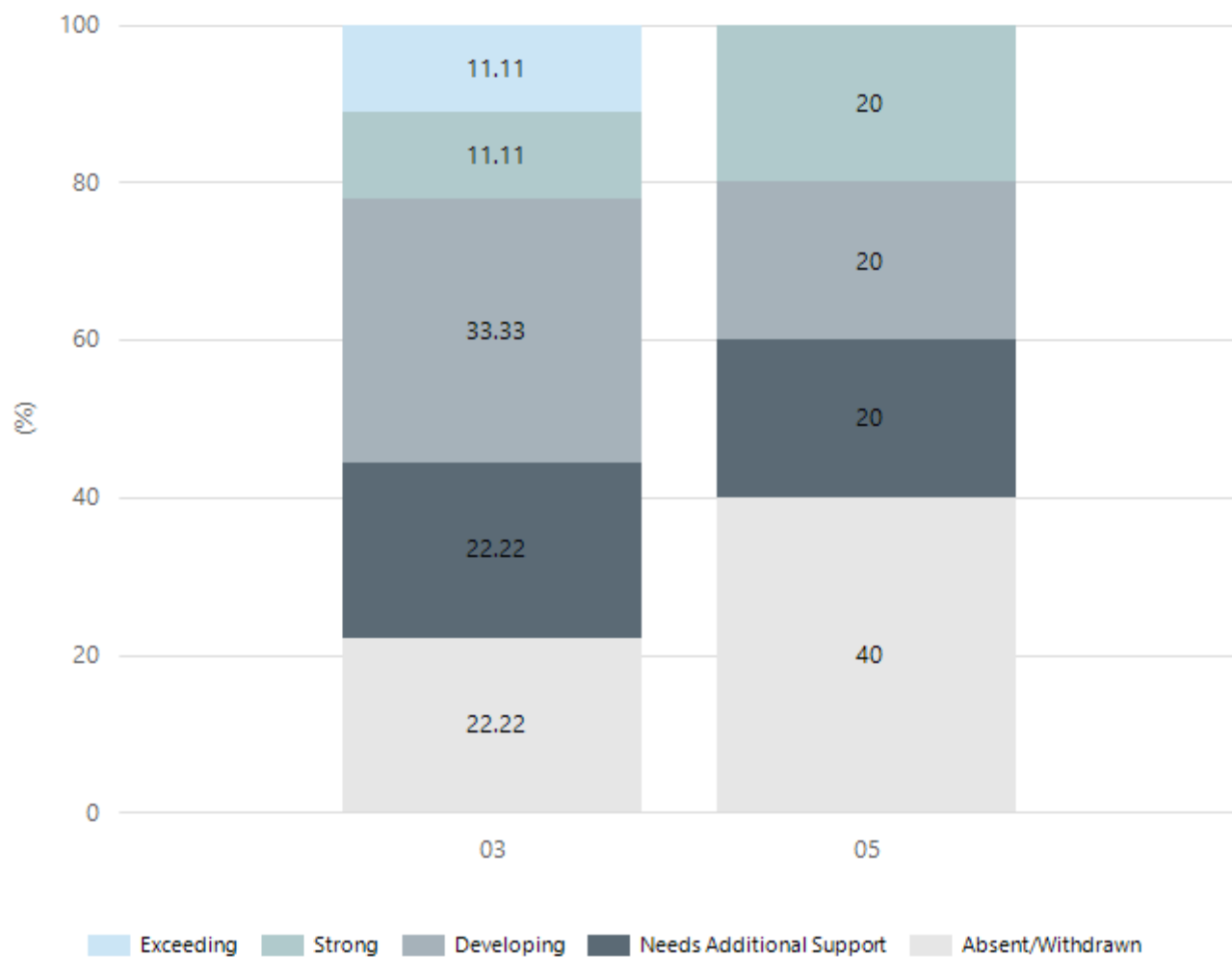
■ Exceeding
 ■ Strong
 ■ Developing
 ■ Needs Additional Support
 ■ Absent/Withdrawn
 ■ Exempt

Year Level	03	05
Exceeding	7	6
Strong	9	15
Developing	16	5
Needs Additional Support	8	7
Absent/Withdrawn	3	4
Exempt	2	1
Total	45	38

Data Source: Department for Education Assessment Data Holdings, 2023. When there are less than six students in a cohort, no data is supplied.

NAPLAN Proficiency - Aboriginal Learners

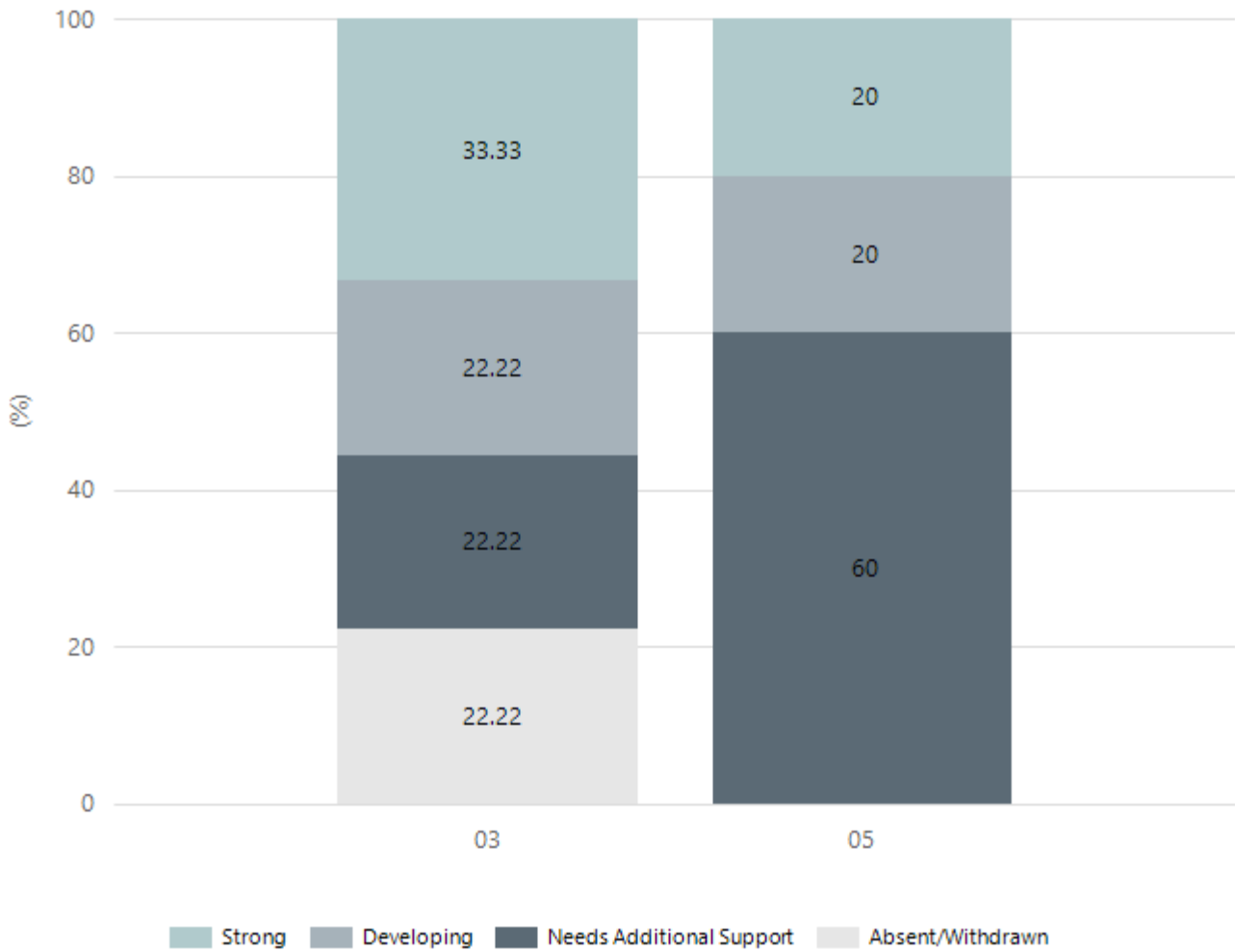
Numeracy



Year Level	03	05
Exceeding	1	
Strong	1	1
Developing	3	1
Needs Additional Support	2	1
Absent/Withdrawn	2	2
Total	9	5

Data Source: Department for Education Assessment Data Holdings, 2023. When there are less than six students in a cohort, no data is supplied. Only data for Aboriginal learners is displayed.

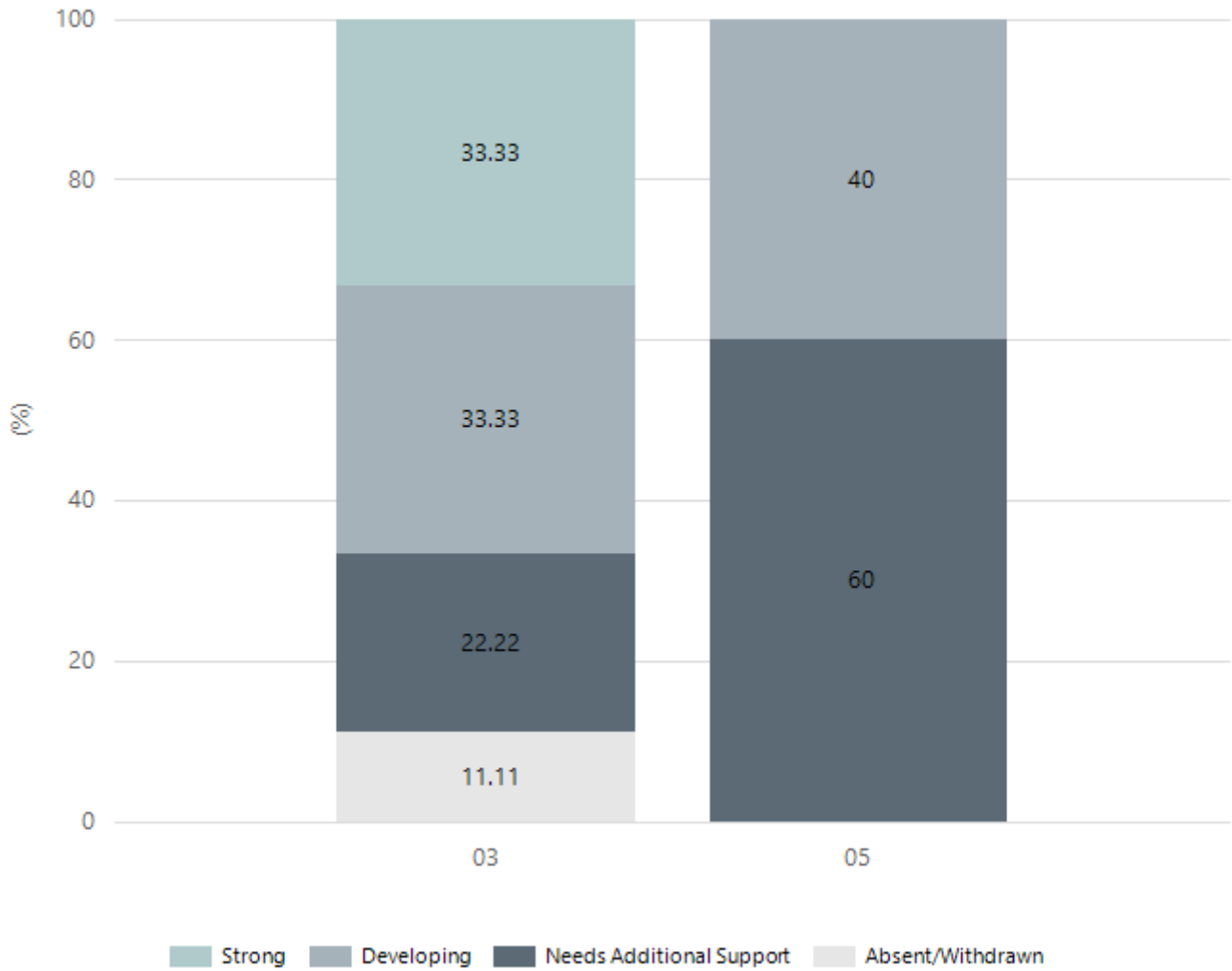
Reading



Year Level	03	05
Strong	3	1
Developing	2	1
Needs Additional Support	2	3
Absent/Withdrawn	2	
Total	9	5

Data Source: Department for Education Assessment Data Holdings, 2023. When there are less than six students in a cohort, no data is supplied. Only data for Aboriginal learners is displayed.

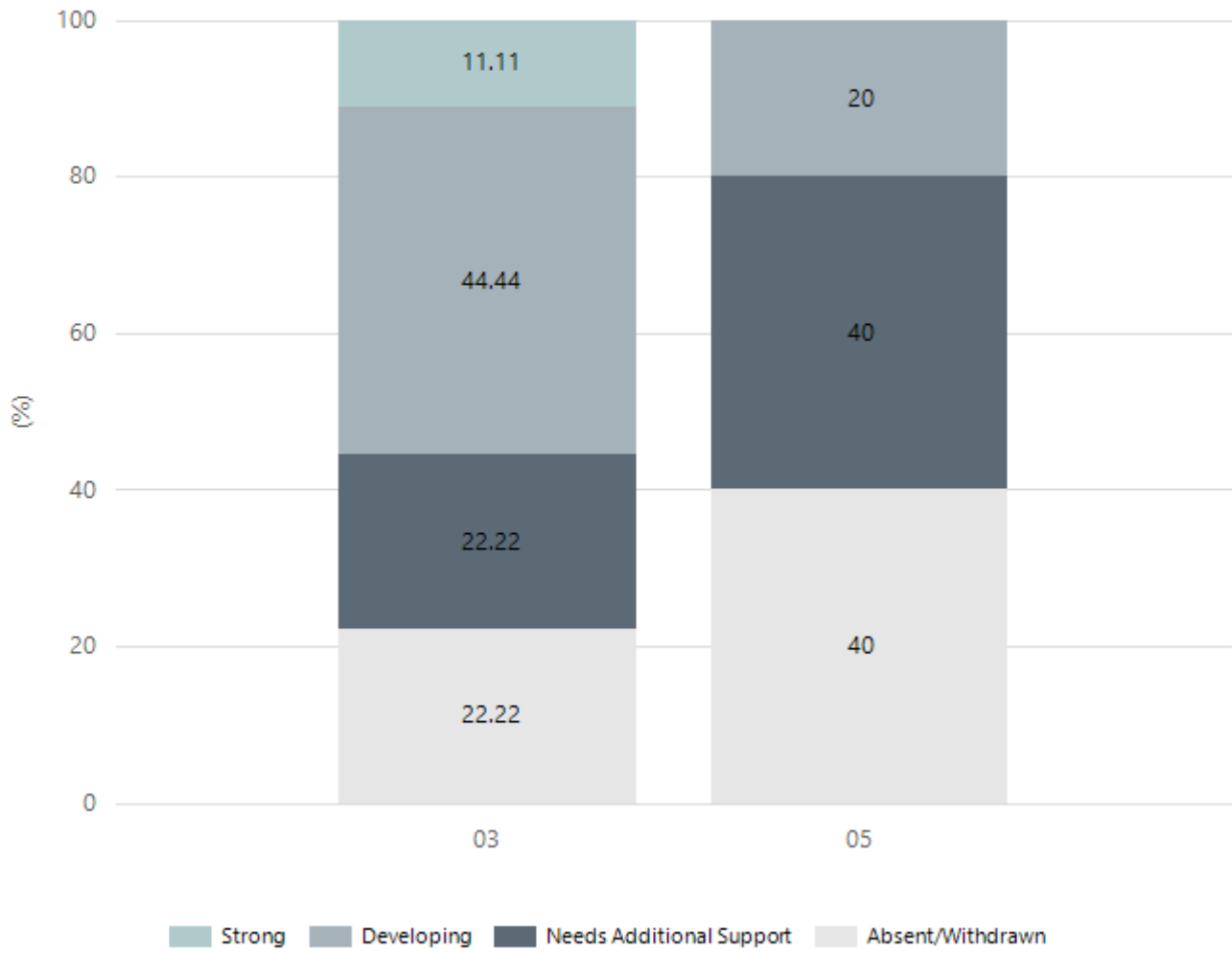
Writing



Year Level	03	05
Strong	3	
Developing	3	2
Needs Additional Support	2	3
Absent/Withdrawn	1	
Total	9	5

Data Source: Department for Education Assessment Data Holdings, 2023. When there are less than six students in a cohort, no data is supplied. Only data for Aboriginal learners is displayed.

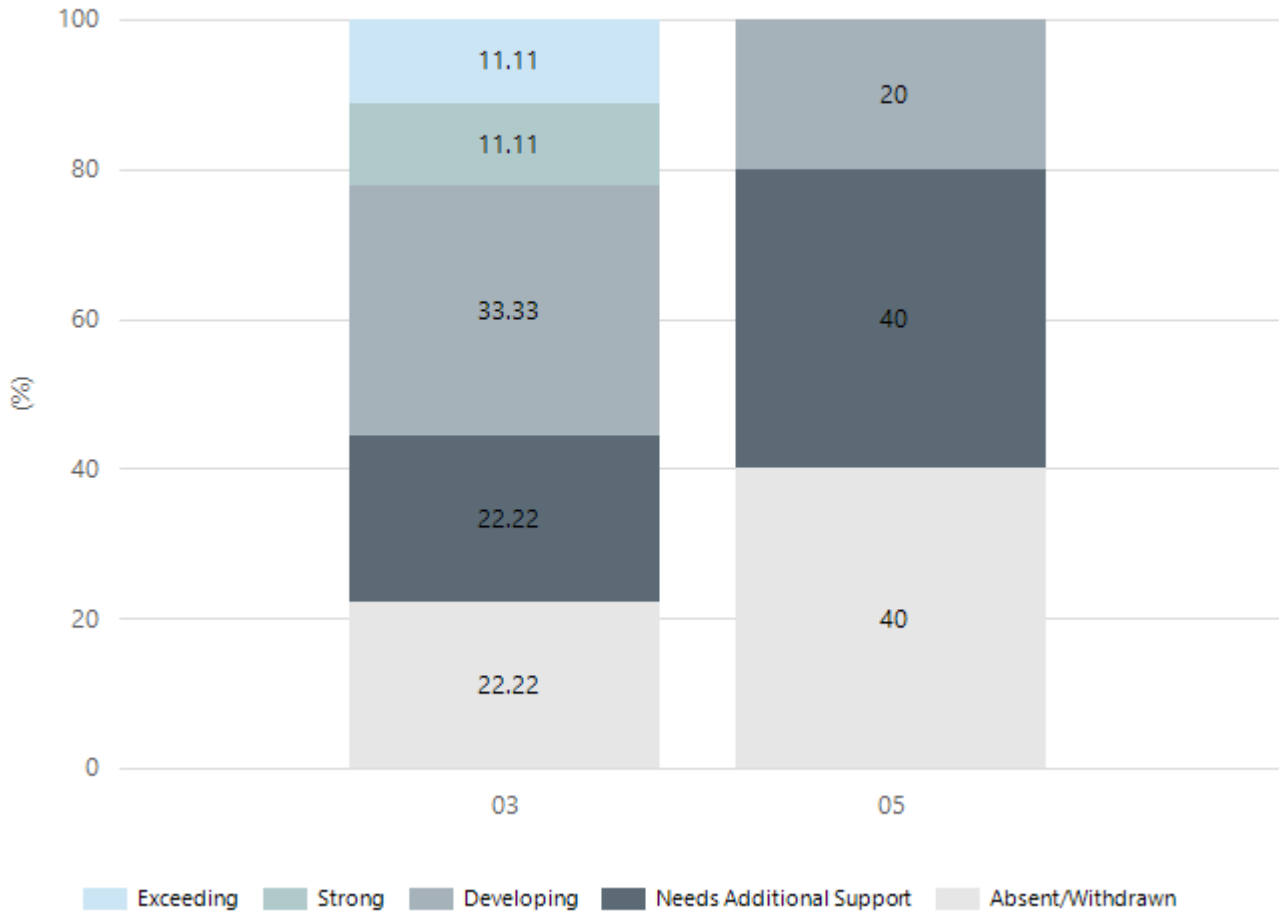
Grammar



Year Level	03	05
Strong	1	
Developing	4	1
Needs Additional Support	2	2
Absent/Withdrawn	2	2
Total	9	5

Data Source: Department for Education Assessment Data Holdings, 2023. When there are less than six students in a cohort, no data is supplied. Only data for Aboriginal learners is displayed.

Spelling



Year Level	03	05
Exceeding	1	
Strong	1	
Developing	3	1
Needs Additional Support	2	2
Absent/Withdrawn	2	2
Total	9	5

Data Source: Department for Education Assessment Data Holdings, 2023. When there are less than six students in a cohort, no data is supplied. Only data for Aboriginal learners is displayed.

Preschool Attendance

	Term 1	Term 2	Term 3	Term 4
2020 centre	90.9%		88.1%	88.8%
2021 centre	88%	88.3%	85.5%	89.5%
2022 centre	89.2%	66.2%	73.5%	78.4%
2023 centre	85.3%	80.3%	76.3%	79.6%
2020 state	89.1%		84.6%	85.8%
2021 state	87.3%	85.3%	87.1%	84.5%
2022 state	83.6%	77.6%	77.9%	77.8%
2023 state	85.4%	82.9%	83.4%	81.4%

Based on attendances recorded in the two-week reference period each term. Data for eligible enrolments as described in the department's Enrolment policy. Attendance rates may differ to previous reporting with the transfer from calculations based on deemed attendance to actual attendance using booked hours divided by attended hours. Data Source: Department for Education Attendance Data, Semester 1 Report 2023. A blank cell indicates there we no students enrolled.

Note: Term 2 2020 data may not be available for all preschools.

School Attendance

Year Level	2021	2022	2023
Reception	90.6%	86.2%	83.0%
Year 01	86.7%	85.9%	90.3%
Year 02	90.6%	82.6%	86.5%
Year 03	83.5%	87.6%	87.7%
Year 04	83.9%	81.1%	90.4%
Year 05	85.1%	81.6%	84.4%
Year 06	82.7%	84.0%	82.9%
Year 07	84.0%		
Primary Other	89.4%	85.7%	88.3%
Total	86.3%	84.3%	86.7%

Data Source: Department for Education Attendance Data, Semester 1 Report 2023. A blank cell indicates there we no students enrolled. 'Primary Other' includes students enrolled in specialised education options. 'Secondary Other' includes students who have already spent a year at Year 12 and elected to undertake further study at Year 12.

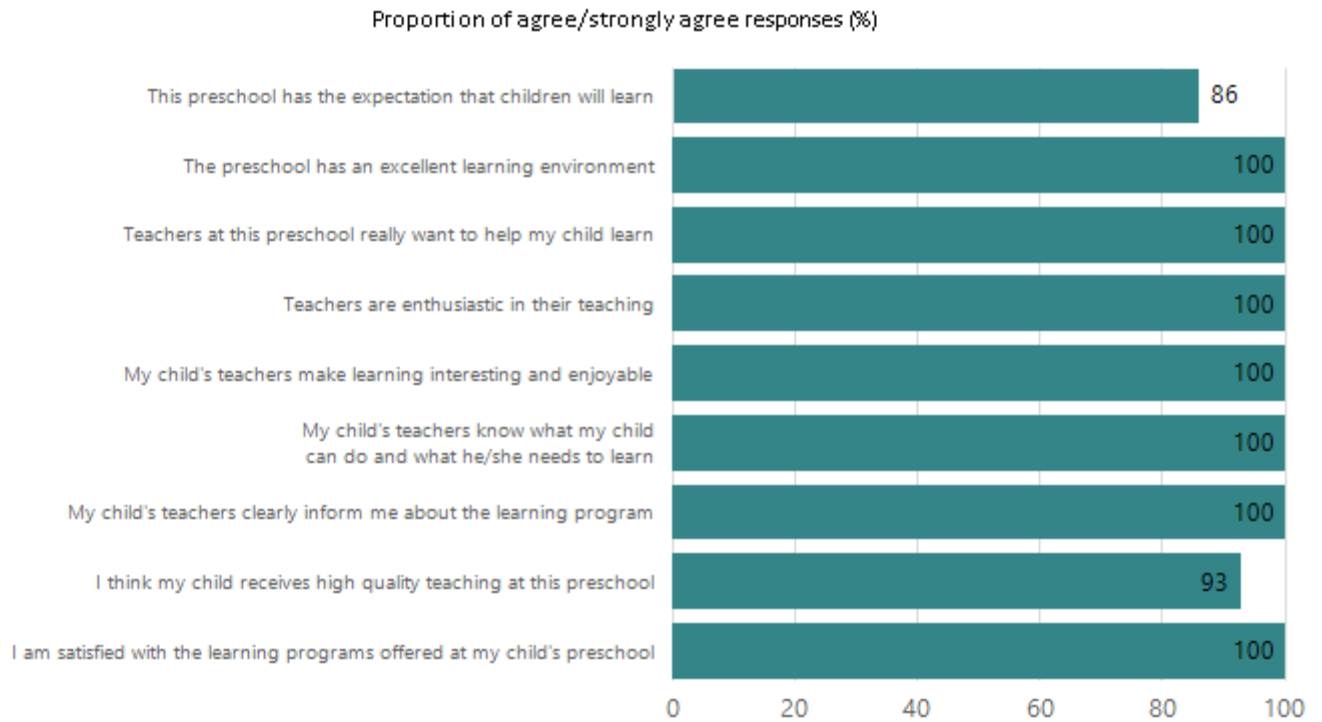
Attendance Comment

In South Australia, preschool attendance is not compulsory, but it is strongly encouraged. Preschool gives children the best opportunity to develop skills, which prepare them for school. These benefits include establishing positive routines and habits, friendships and connections as well as developing communication, problem-solving and creative skills. All children are entitled to access a preschool program over 4 terms the year before they start school.

In South Australia, all children and young people must be in school from 6 years to 16 years old. They must attend a government or non-government school full time. From age 16 to 17 however, young people must attend school or an approved learning program (such as an apprenticeship, traineeship, accredited course or university). Schools and parents must encourage and support students to come to school every day. Parents and caregivers must make sure their child is enrolled in a school, and attends school all day and everyday it is open, unless a child is sick or has an approved exemption. Teachers and leaders actively follow up when a student misses school, including recording all absences and non-attendance. All schools in South Australia have local attendance procedures governed under the Education and Children's Services Regulations 2020.

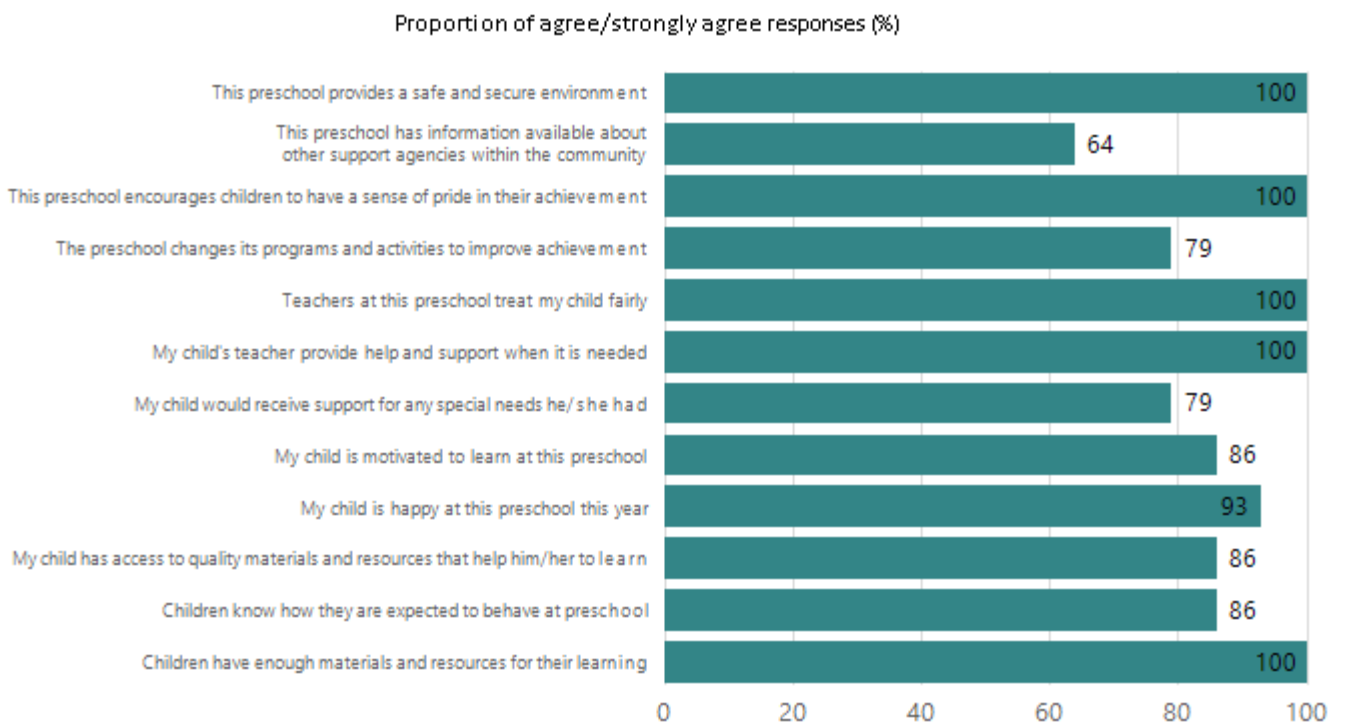
Preschool Family Opinion Survey

Quality of Teaching and Learning



Data Source: 2023 Department for Education Preschool Family Opinions Survey, Term 3 2023.

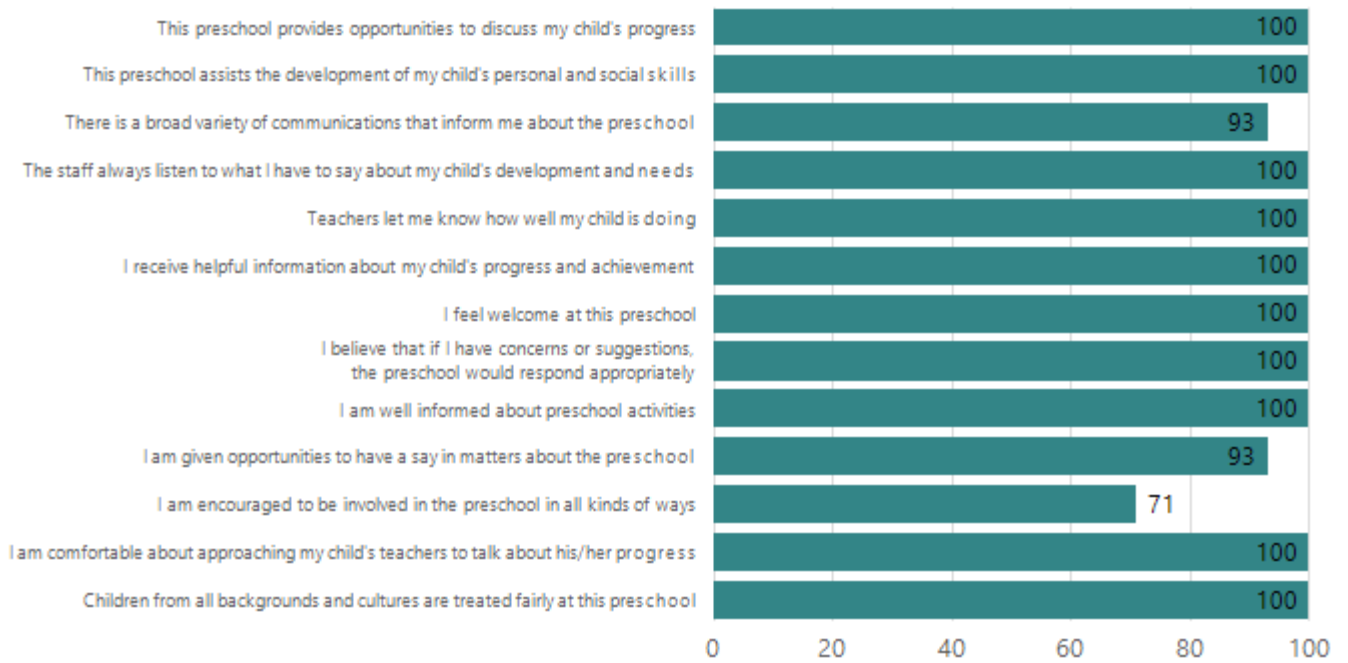
Support of Learning



Data Source: 2023 Department for Education Preschool Family Opinions Survey, Term 3 2023.

Relationships and Communication

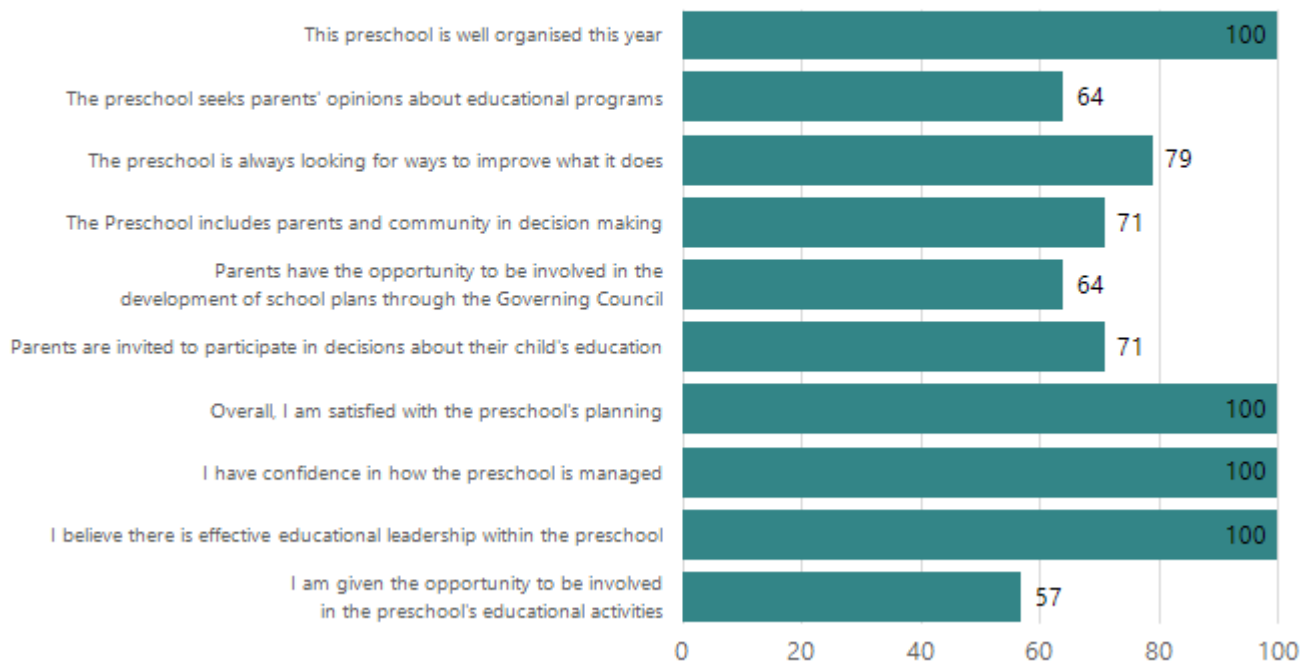
Proportion of agree/strongly agree responses (%)



Data Source: 2023 Department for Education Preschool Family Opinions Survey, Term 3 2023.

Leadership and Decision Making

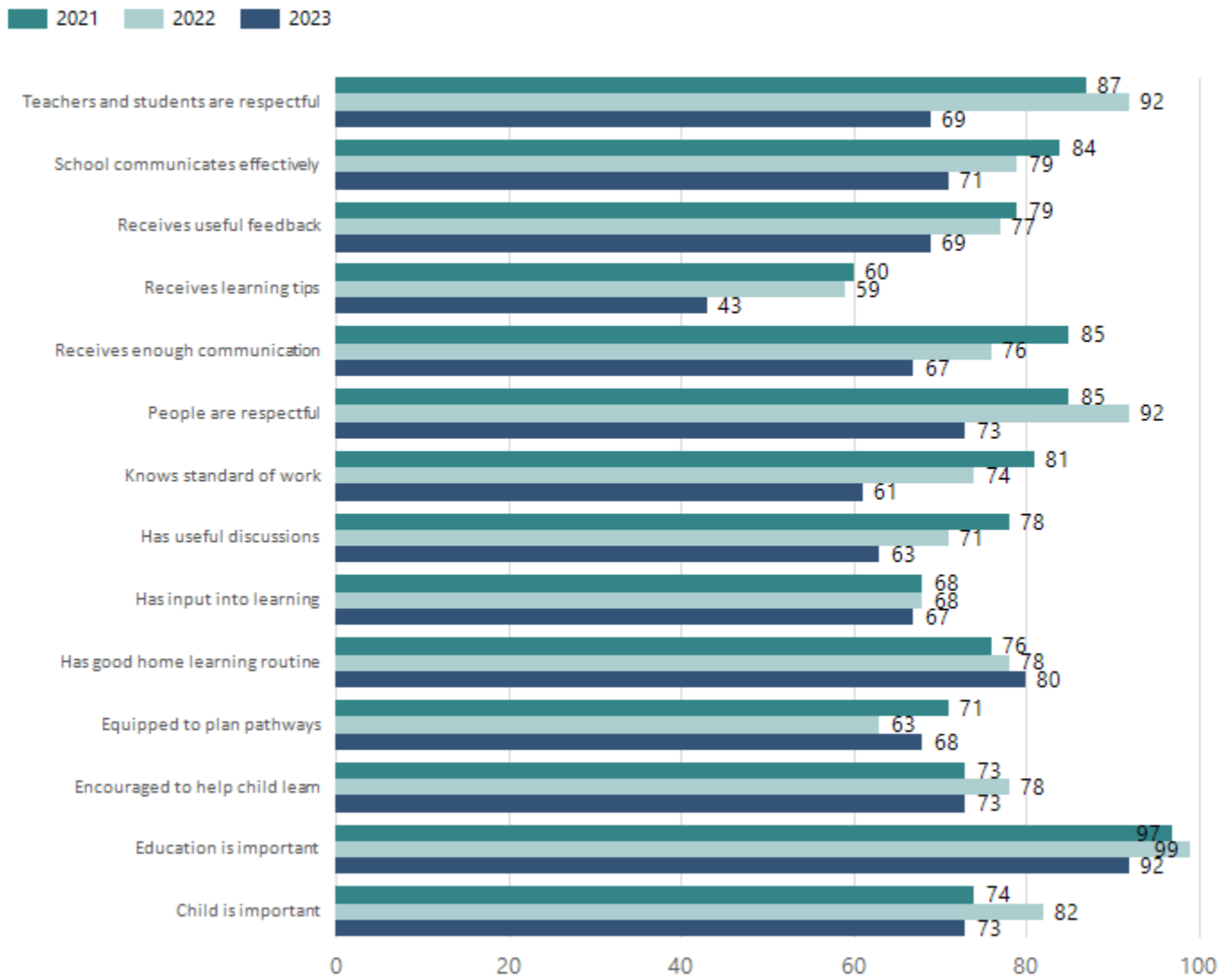
Proportion of agree/strongly agree responses (%)



Data Source: 2023 Department for Education Preschool Family Opinions Survey, Term 3 2023.

Parent Opinion Survey Results

Proportion of agree/strongly agree response(%)



Data Source: 2023 Department for Education Parent Opinions Survey, Term 3 2023.

Destination Schools – Preschool to School

Feeder Schools (Site number - Name)	2021	2022	2023
0670 - Hendon Primary School	81.0%	88.7%	66.7%
0934 - Fulham Gardens Primary School			3.2%
1246 - West Lakes Shore School			3.2%
6015 - Saint Michael's College Junior School			3.2%
9005 - Our Lady Queen of Peace School	4.8%		4.8%
9999 - Unknown	7.1%	8.1%	15.9%

Note: The data is collected in term 3. It does not reflect actual schools enrolled in by existing preschool children. A blank cell indicates there was no data for students enrolled.

Data Source: Department for Education Destination Data Report, 2023.

Intended Destination

Leave Reason	Number	%
NG - ATTENDING NON-GOV SCHOOL IN SA	3	23.0%
TG - TRANSFERRED TO SA GOVERNMENT SCHOOL	8	62.0%
VI - LEFT SA FOR VIC	1	8.0%
WA - LEFT SA FOR WA	1	8.0%

Data Source: Department for Education Destination Data Report, 2023. Data extract term 3 2023. Data shows recorded destinations for students that left the school in the previous year. Data is uploaded by schools in term 3 and may not reflect final or total figures at time of report creation.

Highest Qualifications held by the teaching workforce and workforce composition

All teachers at this school are qualified and registered with the SA Teachers Registration Board.

Qualification Level	Number of Qualifications
Bachelor's degrees or Diplomas	24
Postgraduate Qualifications	7

Data Source: Data extracted from Mandatory Workforce Information Collections as on the last pay date of June 2023. As self-reported by staff in the system.

Please note: Data includes staff who are Actively employed and on extended paid leave. Please note only the highest qualification of the Teaching staff is reported. Excludes any number of other certifications earned.

Workforce composition including indigenous staff

	Teaching Staff		Non-Teaching Staff	
	Indigenous	Non-Indigenous	Indigenous	Non-Indigenous
Full-Time Equivalents	1.0	25.6	0.8	14.9
Persons	1.0	30.0	1.0	23.0

Data Source: Data extracted from Mandatory Workforce Information Collection as on the last pay date of June 2023.

Please note: Data includes staff who are actively employed and on extended paid leave. "Indigenous category" is self-reported by staff in the system.

Financial Statement

Funding Source	Amount
Grants: State	\$4,590,773.79
Grants: Commonwealth	\$20,000.00
Parent Contributions	\$65,042.25
Fund Raising	\$26,463.39
Other	\$13,354.85

Data Source: School supplied data.