

2023 annual report to the Community

# Avenues College and Avenues College Children's Centre

Avenues College number: 906

Avenues College Children's Centre number: 1582

Partnership: Torrens



School principal:

Hamish McDonald

*H McDonald*

Date of endorsement:

02/04/2024



Government  
of South Australia  
Department for Education

# Context Statement

Avenues College caters for students from R-12. At the time of this report, the enrolment in 2023 is 521. Avenues College is classified as Category 3 on the Department for Education Index of Educational Disadvantage. At the time of this report, the school population includes 22% Aboriginal students, 14% students with disabilities, 18% students with English as an additional language or dialect (EALD) funded background, 4% children/young people in care. Further information about the school is available on the school's website (including its context statement), as well as the My School website.

Information about Avenues College Children's Centre is available on the centres website, as well as the Australian Children's Education and Care Quality Authority (ACECQA) website.

## Governing Council Report

2023 was another busy year for your Governing Council. We adopted our new constitution and developed a Charter to help guide us in our work.

The role of the Governing Council is to support our school by overseeing budgets, endorsing pupil-free days and ratifying recommended Materials and Services charges for student tuition. We also provide feedback and approve Department for Education and school-based policies. This year, we ratified a student use of mobile phones policy.

Some highlights for the Governing Council were achieved through supporting the College Principal as part of the official opening for Avenues College and noting the return and success of our students in the 56th Exchange with Cheltenham College in Victoria, music and arts events, Pedal Prix, sporting endeavours and recognition of outstanding academic performance by individual students from all year levels.

The Governing Council supported staff, students and the school as part of a positive and successful External School Review process in term 4. We have sought to work with our OSHC provider to improve service delivery, while our sub-committees have provided fundraising activities - including a successful Easter raffle, monitored canteen satisfaction levels, explored the strategic direction of the school into the future, and worked with students and staff to develop and approve a new uniform range with a new supplier.

We have been pleased to see the hard work of previous Governing Council members come to fruition with our McKay Avenue emu crossing and improved traffic conditions.

*Kerryn Hibberde*

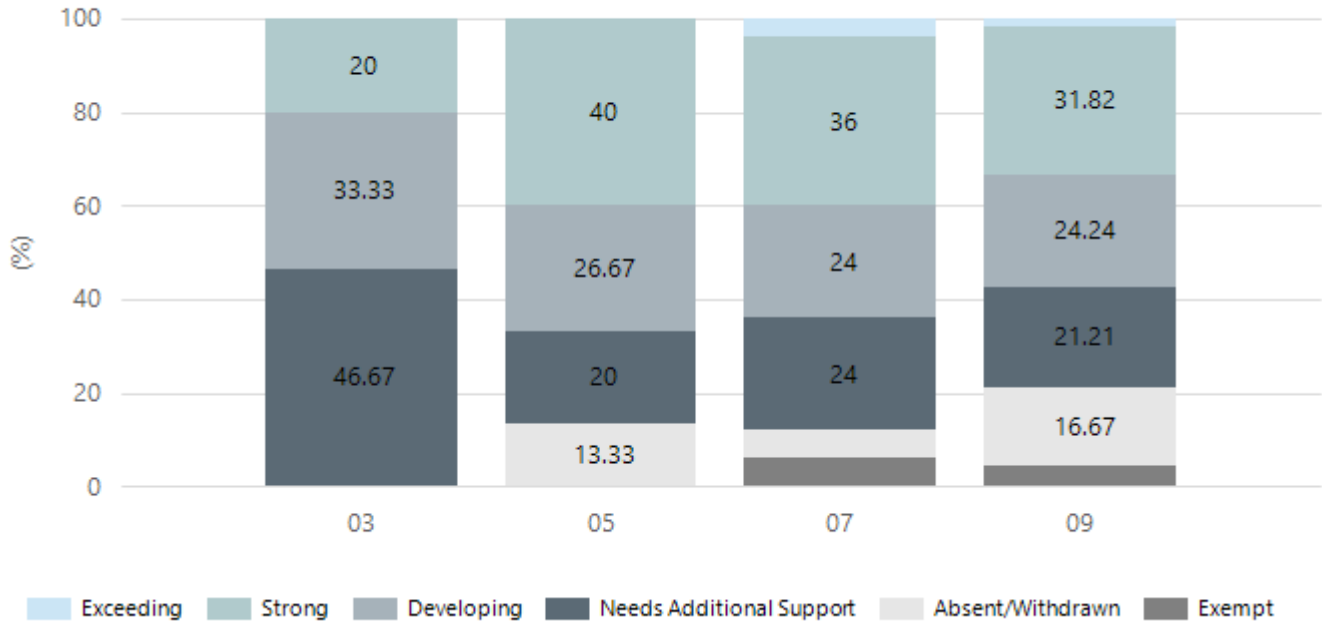
Chair – Avenues College Governing Council

# Performance Summary

## NAPLAN Proficiency

In 2023, the Australian Curriculum, Assessment and Reporting Authority (ACARA) - a Commonwealth Independent statutory authority - announced changes to NAPLAN performance reporting. This new way of reporting by ACARA that NAPLAN results from 2023 will not be comparable to previous years. The new approach replaces the previous numerical NAPLAN bands and the national minimum standard.

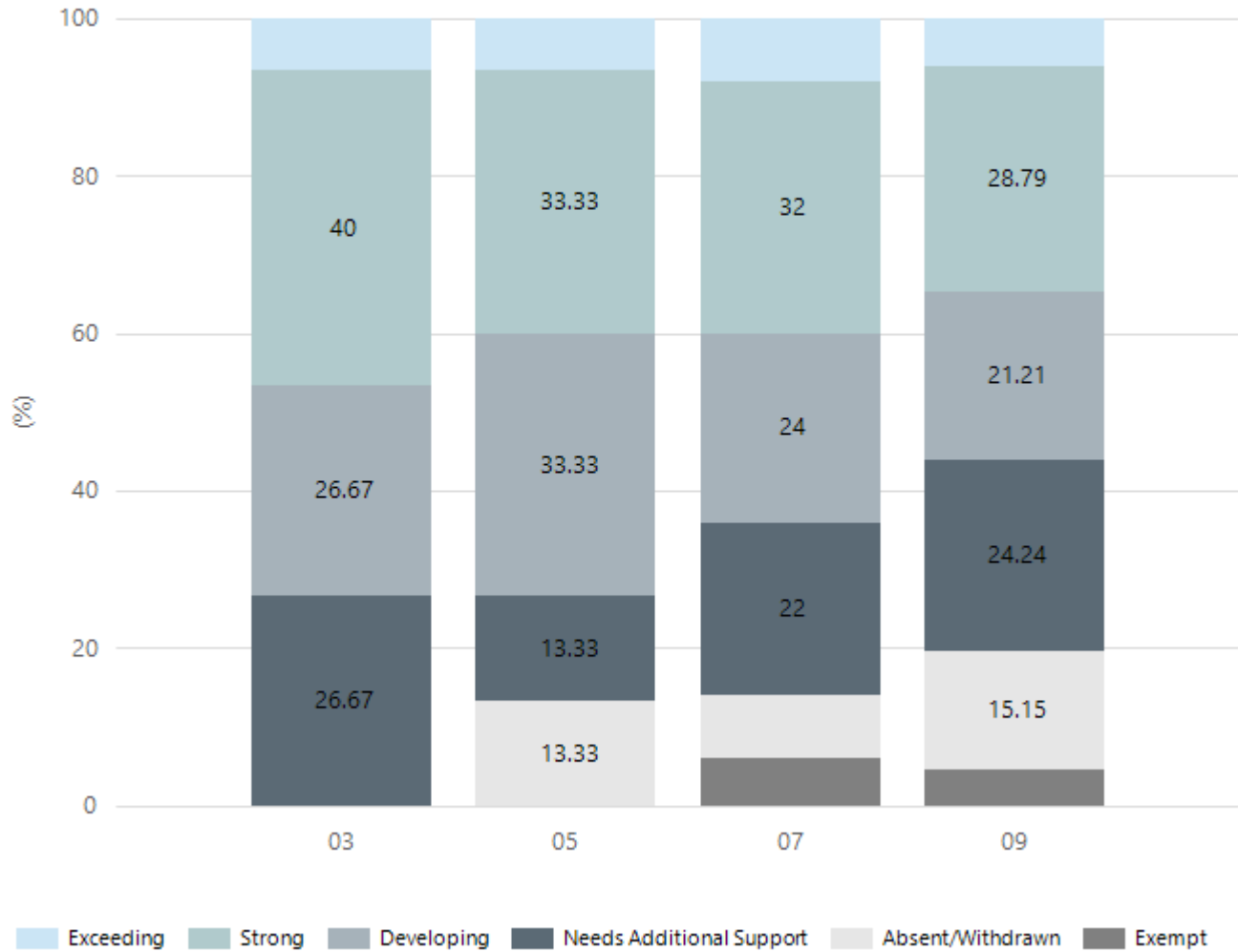
### Numeracy



Year Level	03	05	07	09
Exceeding			2	1
Strong	3	6	18	21
Developing	5	4	12	16
Needs Additional Support	7	3	12	14
Absent/Withdrawn		2	3	11
Exempt			3	3
Total	15	15	50	66

Data Source: Department for Education Assessment Data Holdings, 2023. When there are less than six students in a cohort, no data is supplied.

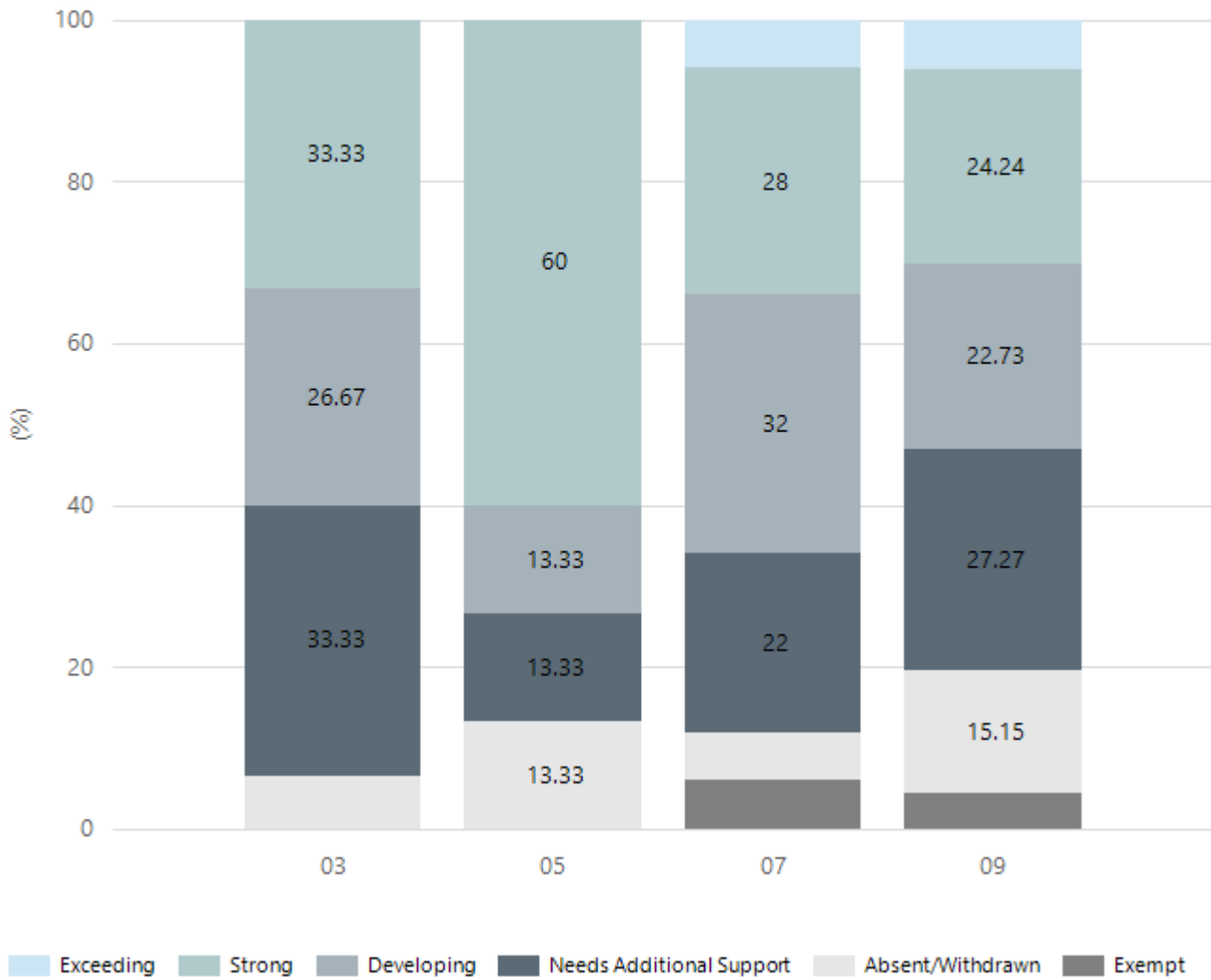
## Reading



Year Level	03	05	07	09
Exceeding	1	1	4	4
Strong	6	5	16	19
Developing	4	5	12	14
Needs Additional Support	4	2	11	16
Absent/Withdrawn		2	4	10
Exempt			3	3
Total	15	15	50	66

Data Source: Department for Education Assessment Data Holdings, 2023. When there are less than six students in a cohort, no data is supplied.

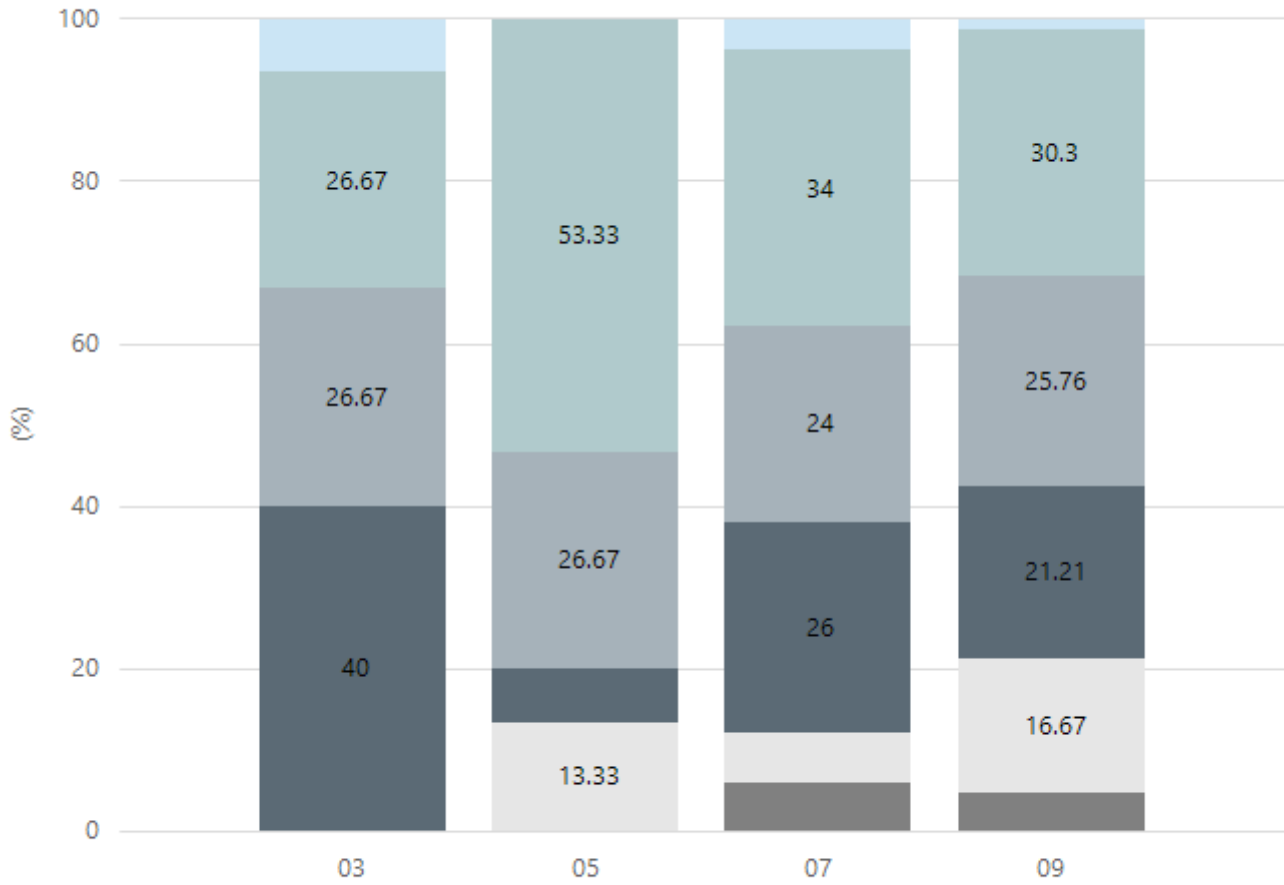
## Writing



Year Level	03	05	07	09
Exceeding			3	4
Strong	5	9	14	16
Developing	4	2	16	15
Needs Additional Support	5	2	11	18
Absent/Withdrawn	1	2	3	10
Exempt			3	3
Total	15	15	50	66

Data Source: Department for Education Assessment Data Holdings, 2023. When there are less than six students in a cohort, no data is supplied.

## Grammar

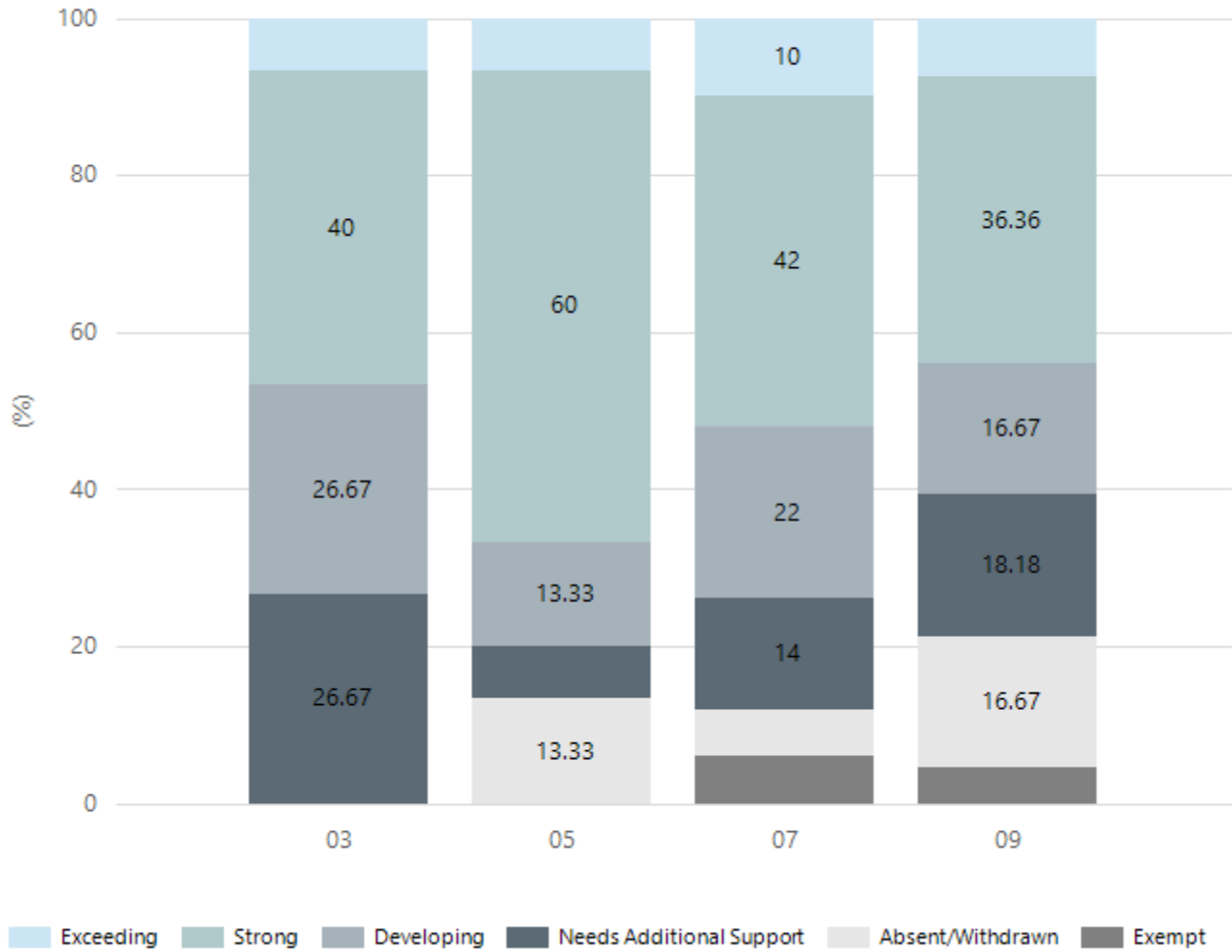


Exceeding Strong Developing Needs Additional Support Absent/Withdrawn Exempt

Year Level	03	05	07	09
Exceeding	1		2	1
Strong	4	8	17	20
Developing	4	4	12	17
Needs Additional Support	6	1	13	14
Absent/Withdrawn		2	3	11
Exempt			3	3
Total	15	15	50	66

Data Source: Department for Education Assessment Data Holdings, 2023. When there are less than six students in a cohort, no data is supplied.

## Spelling

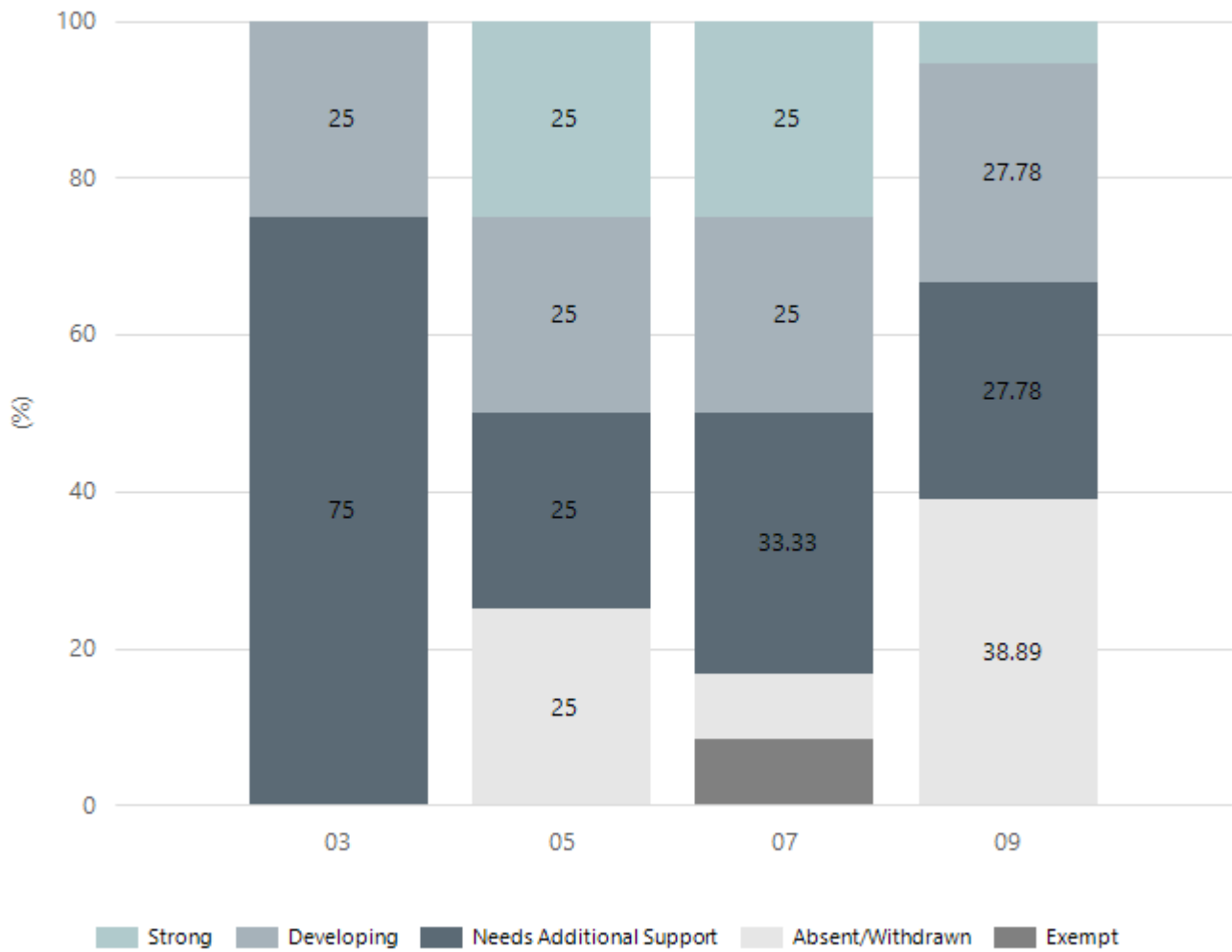


Year Level	03	05	07	09
Exceeding	1	1	5	5
Strong	6	9	21	24
Developing	4	2	11	11
Needs Additional Support	4	1	7	12
Absent/Withdrawn		2	3	11
Exempt			3	3
Total	15	15	50	66

Data Source: Department for Education Assessment Data Holdings, 2023. When there are less than six students in a cohort, no data is supplied.

# NAPLAN Proficiency - Aboriginal Learners

## Numeracy

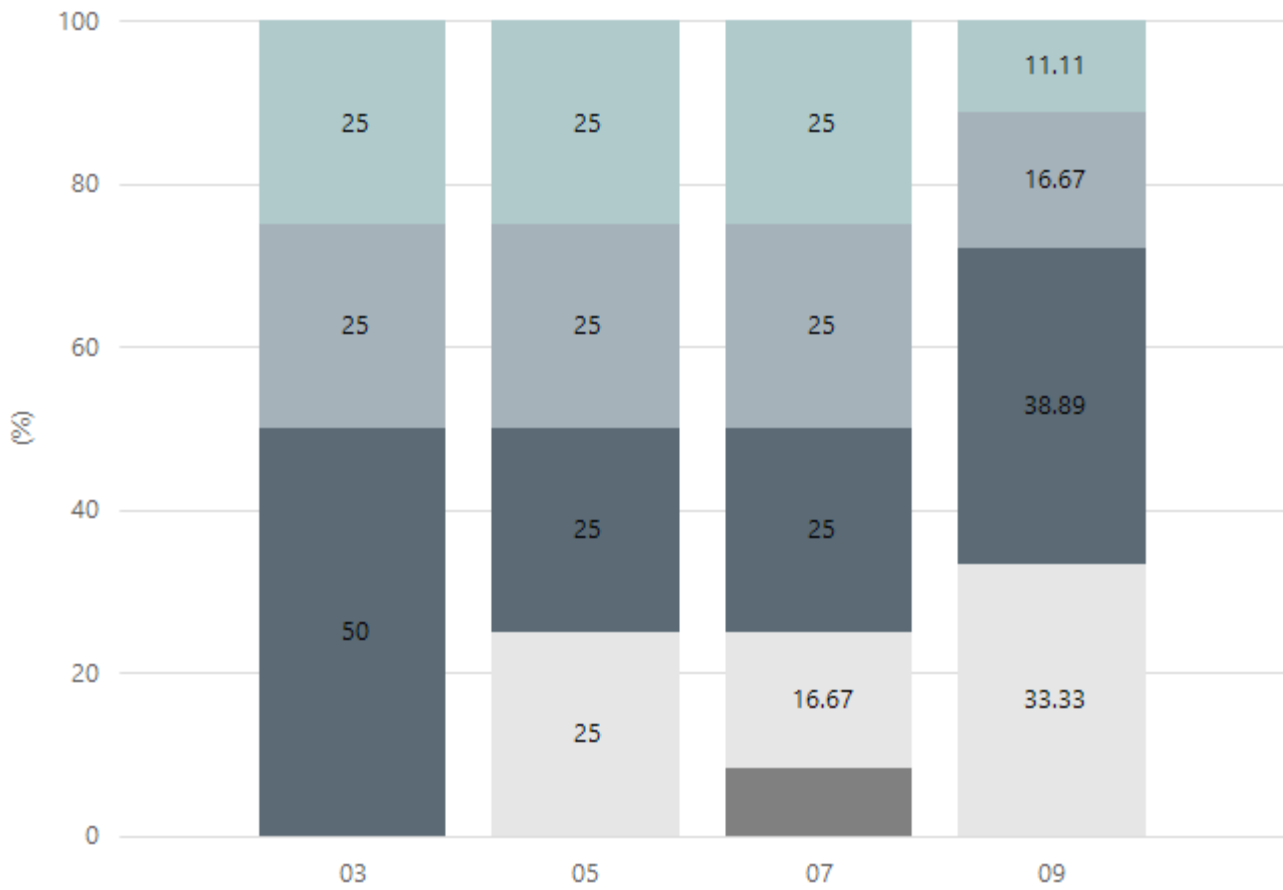


Year Level	03	05	07	09
Strong		1	3	1
Developing	1	1	3	5
Needs Additional Support	3	1	4	5
Absent/Withdrawn		1	1	7
Exempt			1	
Total	4	4	12	18

Data Source: Department for Education Assessment Data Holdings, 2023. When there are less than six students in a cohort, no data is supplied. Only data for Aboriginal learners is displayed.



## Reading

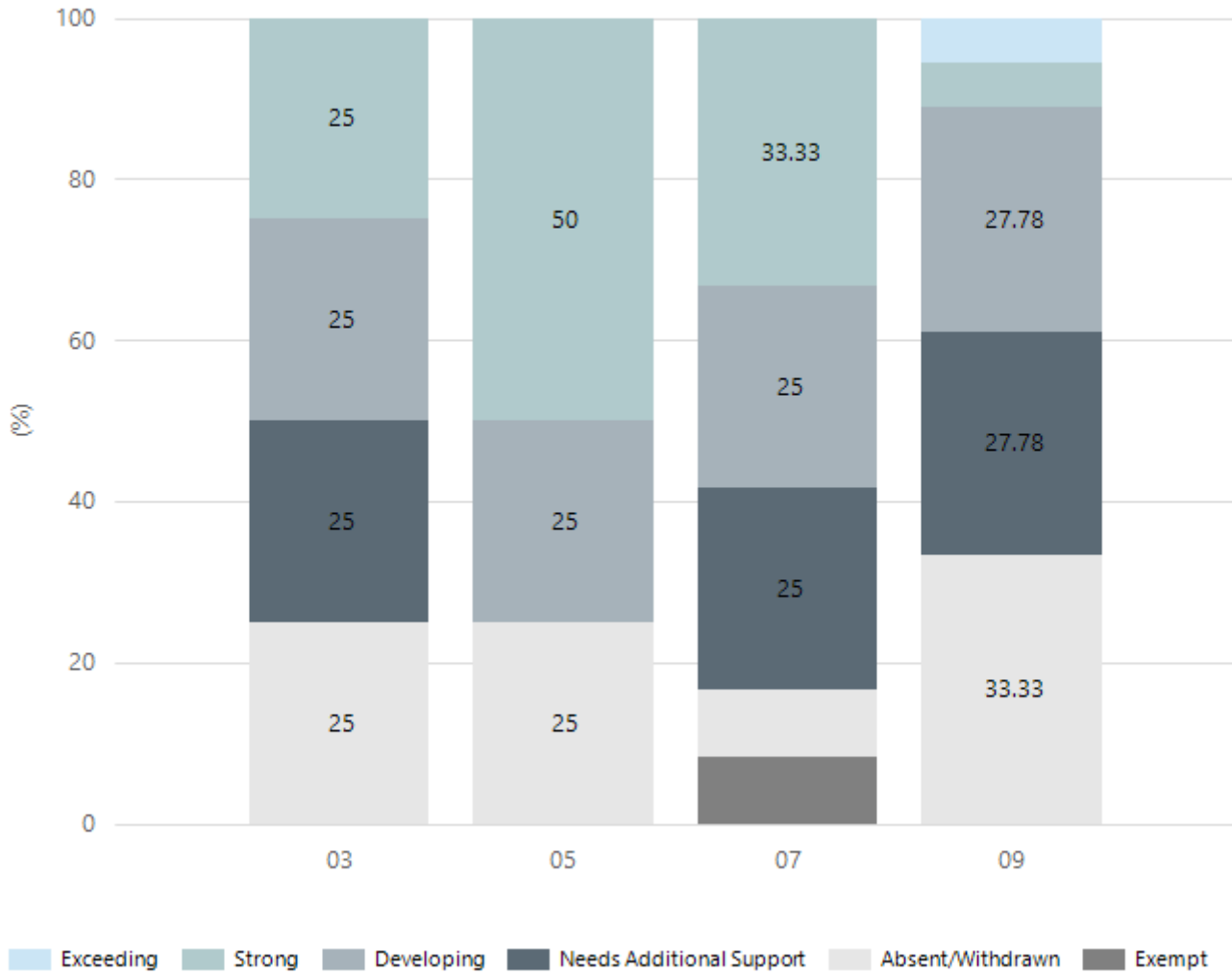


Strong Developing Needs Additional Support Absent/Withdrawn Exempt

Year Level	03	05	07	09
Strong	1	1	3	2
Developing	1	1	3	3
Needs Additional Support	2	1	3	7
Absent/Withdrawn		1	2	6
Exempt			1	
Total	4	4	12	18

Data Source: Department for Education Assessment Data Holdings, 2023. When there are less than six students in a cohort, no data is supplied. Only data for Aboriginal learners is displayed.

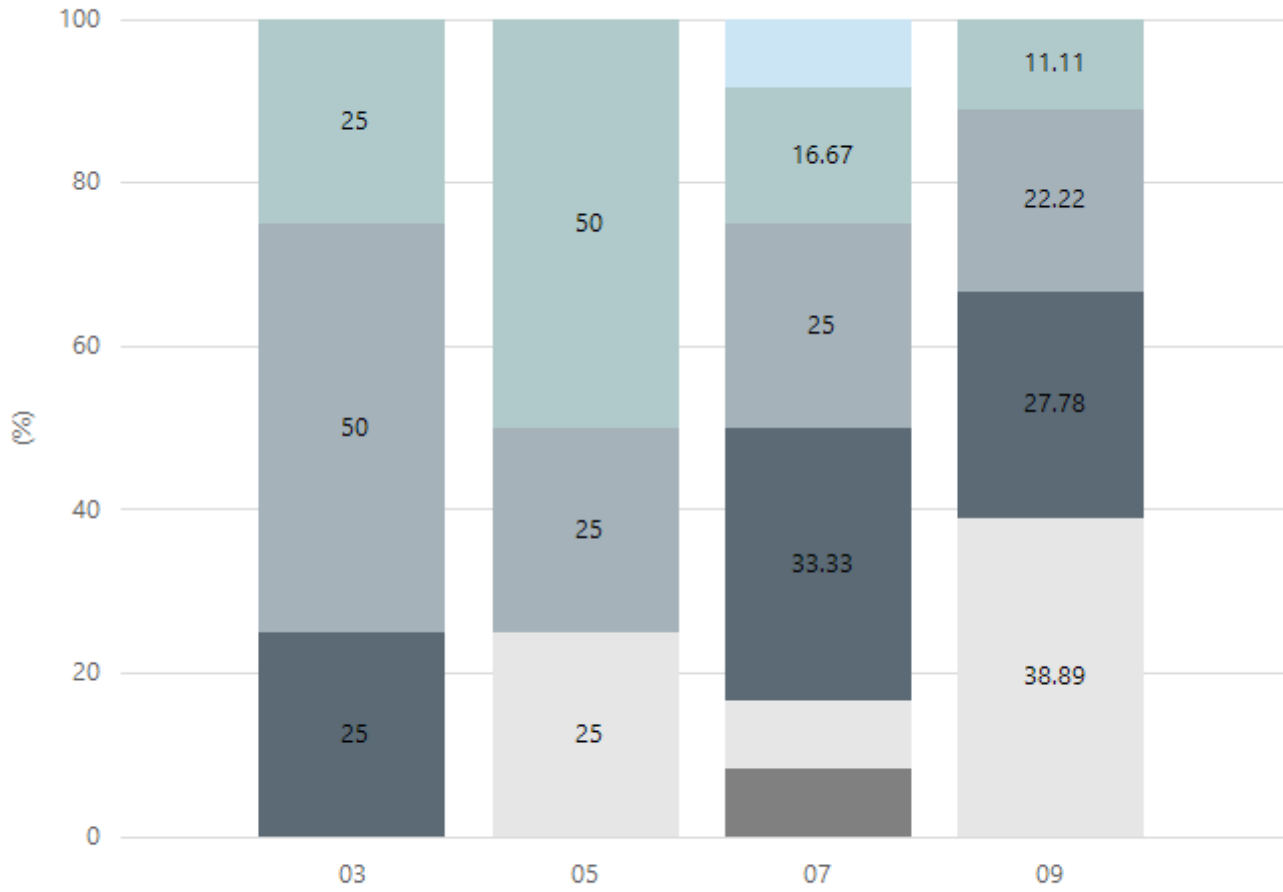
## Writing



Year Level	03	05	07	09
Exceeding				1
Strong	1	2	4	1
Developing	1	1	3	5
Needs Additional Support	1		3	5
Absent/Withdrawn	1	1	1	6
Exempt			1	
Total	4	4	12	18

Data Source: Department for Education Assessment Data Holdings, 2023. When there are less than six students in a cohort, no data is supplied. Only data for Aboriginal learners is displayed.

## Grammar

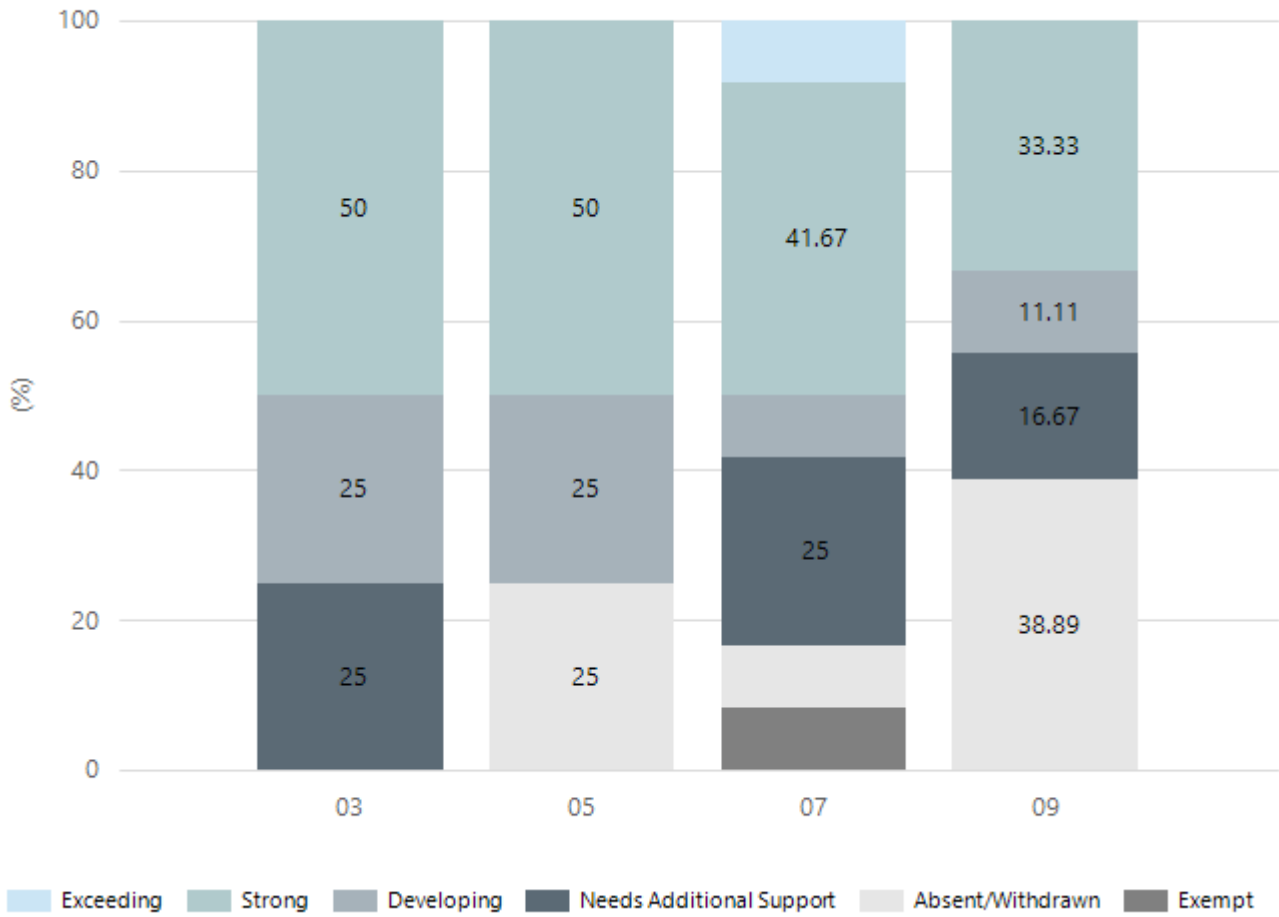


Exceeding Strong Developing Needs Additional Support Absent/Withdrawn Exempt

Year Level	03	05	07	09
Exceeding			1	
Strong	1	2	2	2
Developing	2	1	3	4
Needs Additional Support	1		4	5
Absent/Withdrawn		1	1	7
Exempt			1	
Total	4	4	12	18

Data Source: Department for Education Assessment Data Holdings, 2023. When there are less than six students in a cohort, no data is supplied. Only data for Aboriginal learners is displayed.

## Spelling



Year Level	03	05	07	09
Exceeding			1	
Strong	2	2	5	6
Developing	1	1	1	2
Needs Additional Support	1		3	3
Absent/Withdrawn		1	1	7
Exempt			1	
Total	4	4	12	18

Data Source: Department for Education Assessment Data Holdings, 2023. When there are less than six students in a cohort, no data is supplied. Only data for Aboriginal learners is displayed.

# South Australian Certificate of Education - SACE

## SACE Stage 2 Grades - Percentage of grades that are C- or above for attempted SACE subjects (SEA)

2020	2021	2022	2023
96%	99%	98%	96%

Data Source: SACE School Data Reports, as of February 2023 for 2020-2022. 2023 SACE results are School supplied data. When there are less than six students, no data is supplied. Due to rounding of percentages, total results may not add up to 100%.

## SACE Stage 2 Grade Distribution

Grade	2020	2021	2022	2023
A+		1%	3%	5%
A	1%	6%	5%	8%
A-	5%	18%	10%	11%
B+	9%	12%	14%	9%
B	24%	24%	14%	13%
B-	13%	12%	15%	13%
C+	11%	9%	14%	24%
C	28%	12%	19%	24%
C-	5%	5%	4%	4%
D+	3%		1%	2%
D			1%	1%
D-			1%	1%
E+	1%	1%		0%

Data Source: SACE School Data Reports, as of February 2023 for 2020-2022. 2023 SACE results are School supplied data. When there are less than six students, no data is supplied. Due to rounding of percentages, total results may not add up to 100%.

## SACE Completion - Percentage of completers out of those students who had the potential to complete their SACE in October that year

2020	2021	2022	2023
97%	100%	100%	100%

Data Source: SACE School Data Reports, as of February 2023 for 2020-2022. 2023 SACE results are School supplied data. When there are less than six students, no data is supplied. Due to rounding of percentages, total results may not add up to 100%.

## Year 12 Students undertaking Vocational or Trade Training (VET)

	2021	2022	2023
Percentage of Year 12 students undertaking Vocational Training or Trade Training	27	20	23
Percentage of Year 12 students attaining a Year 12 certificate or equivalent VET qualification	100	100	100

Data Source: School supplied data

## Preschool Attendance

	Term 1	Term 2	Term 3	Term 4
2020 centre	79.9%		82.9%	84.3%
2021 centre	75.3%	80.4%	65.7%	69%
2022 centre	82.1%	79%	68.4%	64.8%
2023 centre	78.2%	81%	79.5%	81.2%
2020 state	89.1%		84.6%	85.8%
2021 state	87.3%	85.3%	87.1%	84.5%
2022 state	83.6%	77.6%	77.9%	77.8%
2023 state	85.4%	82.9%	83.4%	81.4%

Based on attendances recorded in the two-week reference period each term. Data for eligible enrolments as described in the department's Enrolment policy. Attendance rates may differ to previous reporting with the transfer from calculations based on deemed attendance to actual attendance using booked hours divided by attended hours. Data Source: Department for Education Attendance Data, Semester 1 Report 2023. A blank cell indicates there were no students enrolled.

Note: Term 2 2020 data may not be available for all preschools.

# School Attendance

Year Level	2021	2022	2023
Reception	90.1%	74.4%	79.2%
Year 01	90.0%	76.9%	78.3%
Year 02	88.6%	73.6%	81.4%
Year 03	84.6%	75.8%	71.8%
Year 04	89.2%	66.6%	83.2%
Year 05	82.1%	67.4%	77.5%
Year 06	92.5%	78.4%	86.4%
Year 07	80.9%	80.6%	74.5%
Year 08	82.0%	69.7%	78.0%
Year 09	80.8%	74.0%	72.2%
Year 10	75.3%	78.1%	71.9%
Year 11	79.9%	84.6%	78.1%
Year 12	75.0%	77.4%	78.6%
Secondary Other	87.1%	88.4%	89.4%
Total	81.5%	76.8%	77.1%

Data Source: Department for Education Attendance Data, Semester 1 Report 2023. A blank cell indicates there were no students enrolled. 'Primary Other' includes students enrolled in specialised education options. 'Secondary Other' includes students who have already spent a year at Year 12 and elected to undertake further study at Year 12.

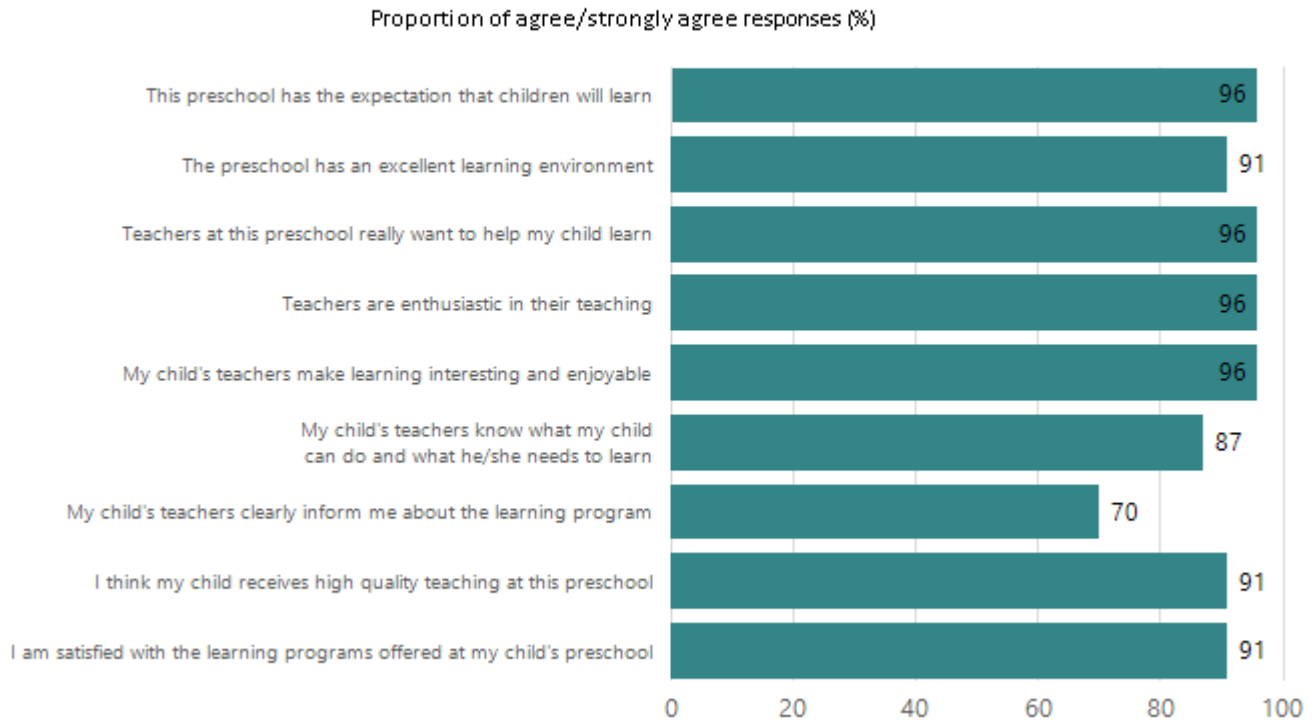
## Attendance Comment

In South Australia, preschool attendance is not compulsory, but it is strongly encouraged. Preschool gives children the best opportunity to develop skills, which prepare them for school. These benefits include establishing positive routines and habits, friendships and connections as well as developing communication, problem-solving and creative skills. All children are entitled to access a preschool program over 4 terms the year before they start school.

In South Australia, all children and young people must be in school from 6 years to 16 years old. They must attend a government or non-government school full time. From age 16 to 17 however, young people must attend school or an approved learning program (such as an apprenticeship, traineeship, accredited course or university). Schools and parents must encourage and support students to come to school every day. Parents and caregivers must make sure their child is enrolled in a school, and attends school all day and everyday it is open, unless a child is sick or has an approved exemption. Teachers and leaders actively follow up when a student misses school, including recording all absences and non-attendance. All schools in South Australia have local attendance procedures governed under the Education and Children's Services Regulations 2020.

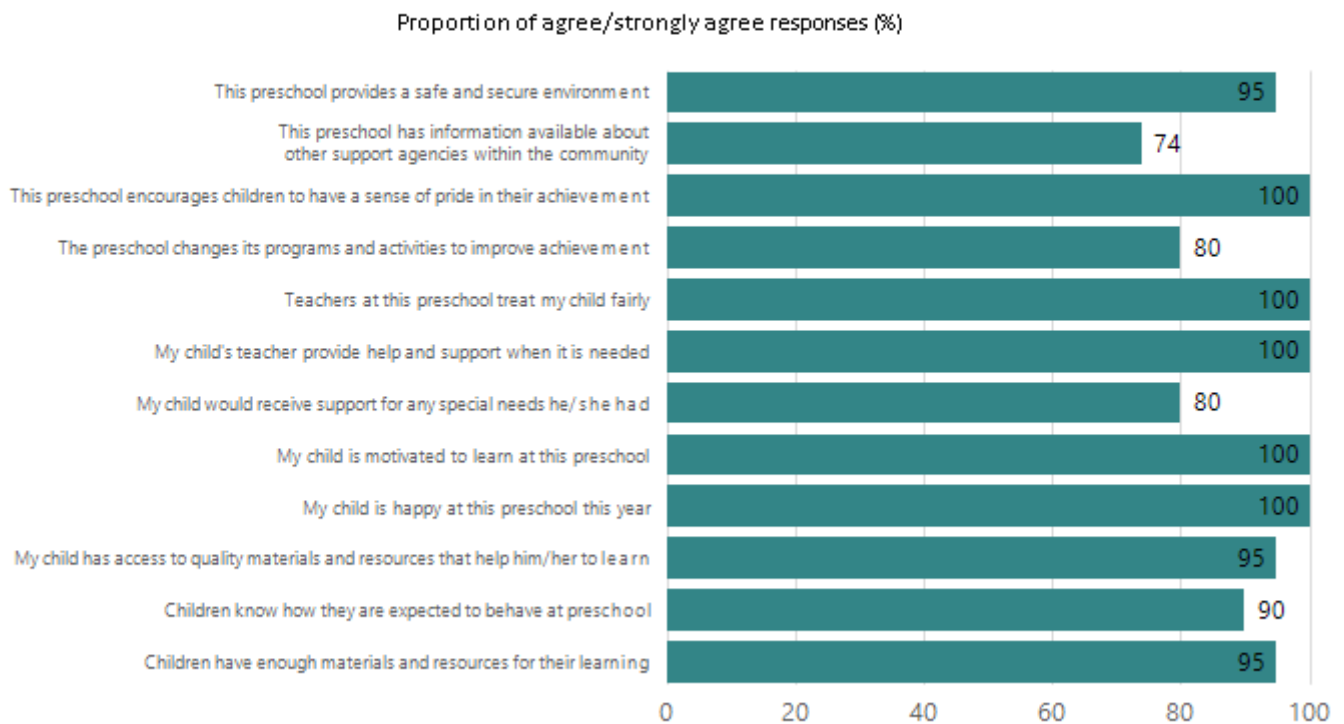
# Preschool Family Opinion Survey

## Quality of Teaching and Learning



Data Source: 2023 Department for Education Preschool Family Opinions Survey, Term 3 2023.

## Support of Learning

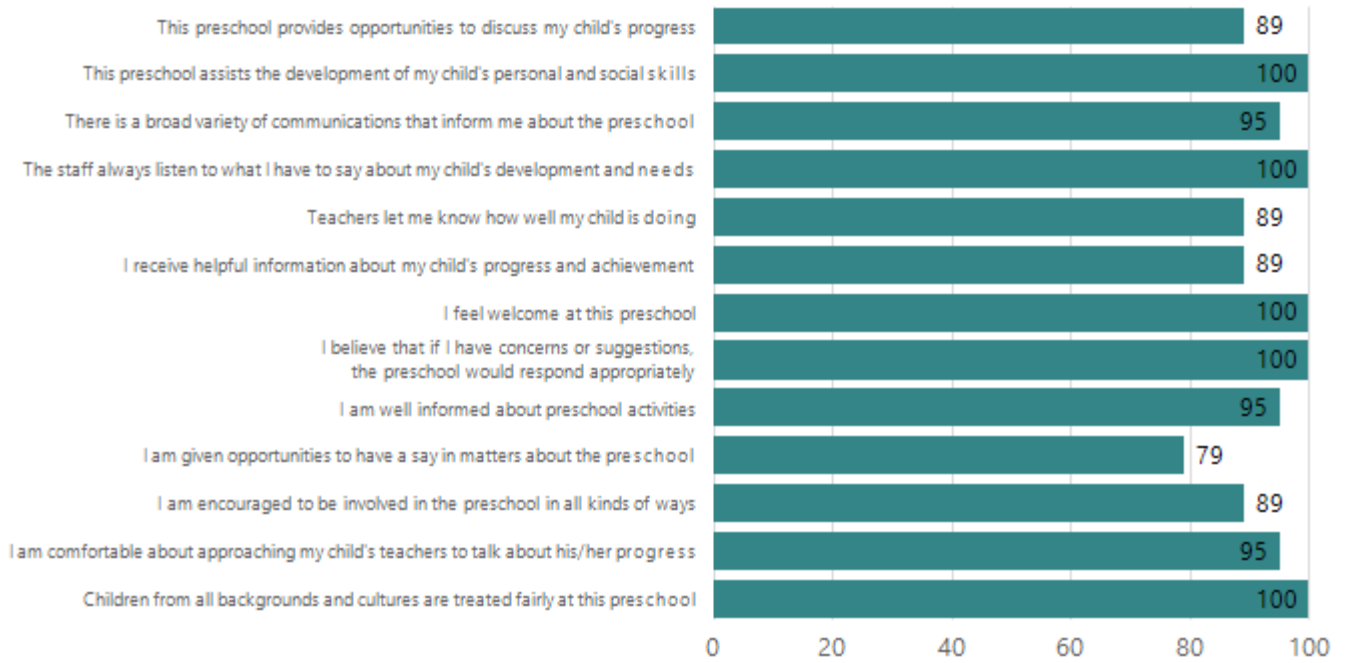


Data Source: 2023 Department for Education Preschool Family Opinions Survey, Term 3 2023.



# Relationships and Communication

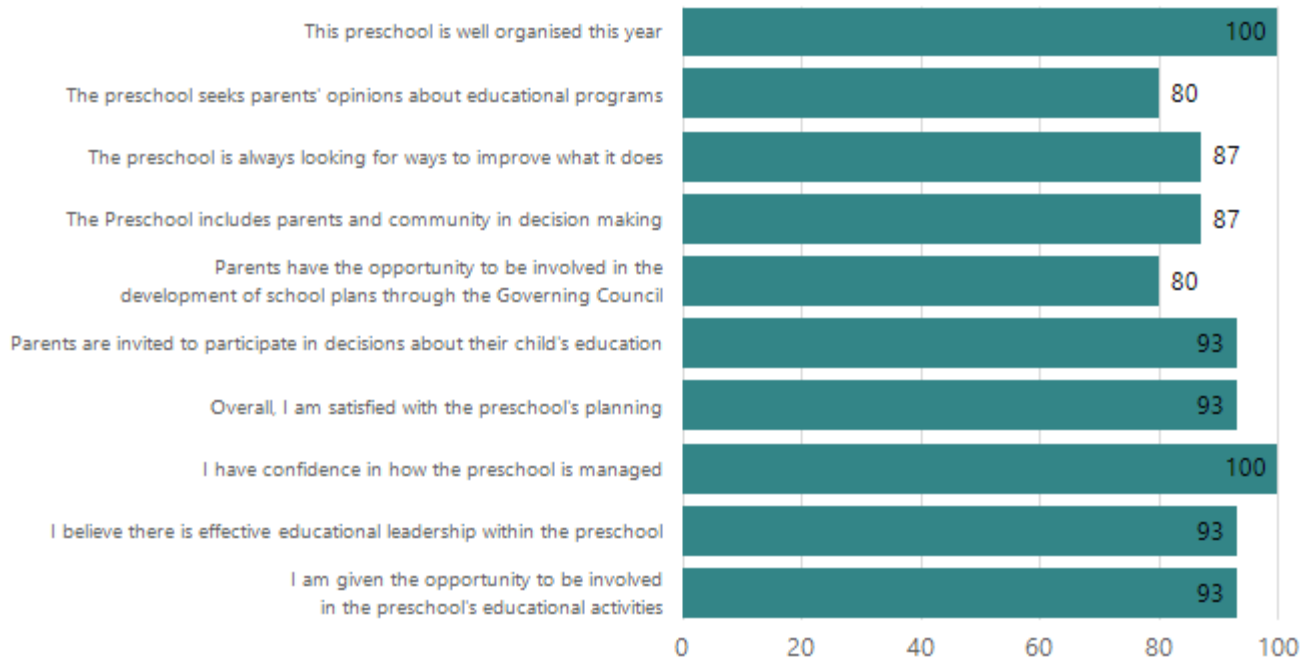
Proportion of agree/strongly agree responses (%)



Data Source: 2023 Department for Education Preschool Family Opinions Survey, Term 3 2023.

# Leadership and Decision Making

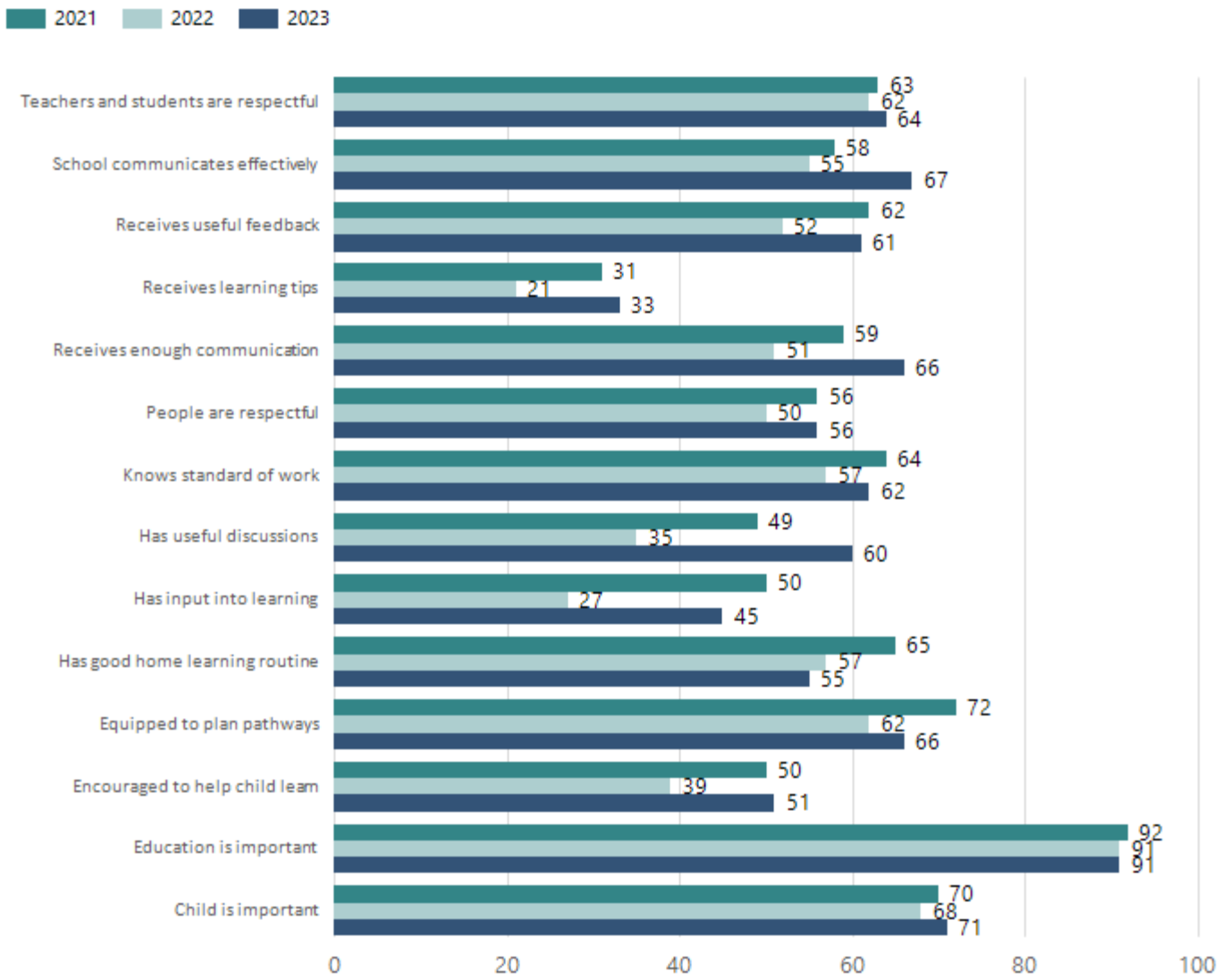
Proportion of agree/strongly agree responses (%)



Data Source: 2023 Department for Education Preschool Family Opinions Survey, Term 3 2023.

# Parent Opinion Survey Results

Proportion of agree/strongly agree response(%)



Data Source: 2023 Department for Education Parent Opinions Survey, Term 3 2023.

## Destination Schools

Feeder Schools (Site number - Name)	2021	2022	2023
Unknown	51.4%	6.7%	
0665 - Hillcrest Primary School		6.7%	6.5%
0898 - Klemzig Primary School			3.9%
0906 - Avenues College		35.6%	61.0%
9031 - St Martin's Catholic Primary School		4.4%	
9088 - St Pius X School	8.6%		
9999 - Unknown	28.6%	37.8%	13.0%

Note: The data is collected in term 3. It does not reflect actual schools enrolled in by existing preschool children. A blank cell indicates there was no data for students enrolled.

Data Source: Department for Education Destination Data Report, 2023.

## Intended Destination

Leave Reason	Number	%
NG - ATTENDING NON-GOV SCHOOL IN SA	9	10.0%
QL - LEFT SA FOR QLD	4	4.0%
SM - SEEKING EMPLOYMENT IN SA	18	20.0%
TA - LEFT SA FOR TAS	4	4.0%
TG - TRANSFERRED TO SA GOVERNMENT SCHOOL	47	52.0%
VI - LEFT SA FOR VIC	4	4.0%

Data Source: Department for Education Destination Data Report, 2023. Data extract term 3 2023. Data shows recorded destinations for students that left the school in the previous year. Data is uploaded by schools in term 3 and may not reflect final or total figures at time of report creation.

# Highest Qualifications held by the teaching workforce and workforce composition

All teachers at this school are qualified and registered with the SA Teachers Registration Board.

Qualification Level	Number of Qualifications
Bachelor's degrees or Diplomas	34
Postgraduate Qualifications	38

Data Source: Data extracted from Mandatory Workforce Information Collections as on the last pay date of June 2023. As self-reported by staff in the system.

Please note: Data includes staff who are Actively employed and on extended paid leave. Please note only the highest qualification of the Teaching staff is reported. Excludes any number of other certifications earned.

## Workforce composition including indigenous staff

	Teaching Staff		Non-Teaching Staff	
	Indigenous	Non-Indigenous	Indigenous	Non-Indigenous
Full-Time Equivalents	0.0	65.9	2.6	28.8
Persons	0.0	73.0	3.0	42.0

Data Source: Data extracted from Mandatory Workforce Information Collection as on the last pay date of June 2023.

Please note: Data includes staff who are actively employed and on extended paid leave. "Indigenous category" is self-reported by staff in the system.

## Financial Statement

Funding Source	Amount
Grants: State	\$10,480,404.24
Grants: Commonwealth	\$34,700.00
Parent Contributions	\$177,850.00
Fund Raising	\$1809.70
Other	\$139,945.79

Data Source: School supplied data.