

2024 annual report to the Community

# Fraser Park Primary School and Fraser Park Preschool

Fraser Park Primary School number: 1382

Fraser Park Preschool number: 1579

Partnership: Murraylands



School principal:

Kimberly Rathjen

*Kimberly  
Rathjen*

Date of endorsement:

/0 /2025



Government  
of South Australia  
Department for Education



# Context Statement

Fraser Park Primary School caters for students from R-6. At the time of this report, the enrolment in 2024 is 72. Fraser Park Primary School is classified as Category 1 on the Department for Education Index of Educational Disadvantage. At the time of this report, the school population includes 36% Aboriginal students, 18% students with disabilities, 14% students with English as an additional language or dialect (EALD) funded background, 1% children/young people in care. Further information about the school is available on the school's website (including its context statement), as well as the My School website.

Information about Fraser Park Preschool is available on the centres website, as well as the Australian Children’s Education and Care Quality Authority (ACECQA) website.

Data Source: Department for Education data holdings from Mid census captured in AUGUST 2024.

## Governing Council Report

As we reflect on the achievements of 2024, we are proud to highlight the successful initiatives and events supported by the Governing Council at Fraser Park Primary School.

We began the year with our first offsite sports day in many years, where the Governing Council played a role by organising and cooking the BBQ. It was a resounding success, bringing together our community in celebration of sportsmanship and teamwork.

In addition, the Governing Council supported our first Easter raffle, successfully raising funds for camps and excursions. This effort provided valuable opportunities for our students to explore and learn beyond the classroom.

At the end of Term 2, the Governing Council supported the first big breakfast for both the preschool and school, fostering a sense of community and connection among students, staff, and families.

Term 3 saw the organisation of a preschool and school disco, which was a hit with the students. The event was so successful that we hope to repeat it in the coming year.

We concluded the year with our end-of-year concert and Year Six dinner, celebrating the achievements and growth of our students. Our preschool and school numbers have grown, reflecting the vibrant and supportive environment we have cultivated. We look forward to an exciting and prosperous 2025, continuing to build on the successes of this year.

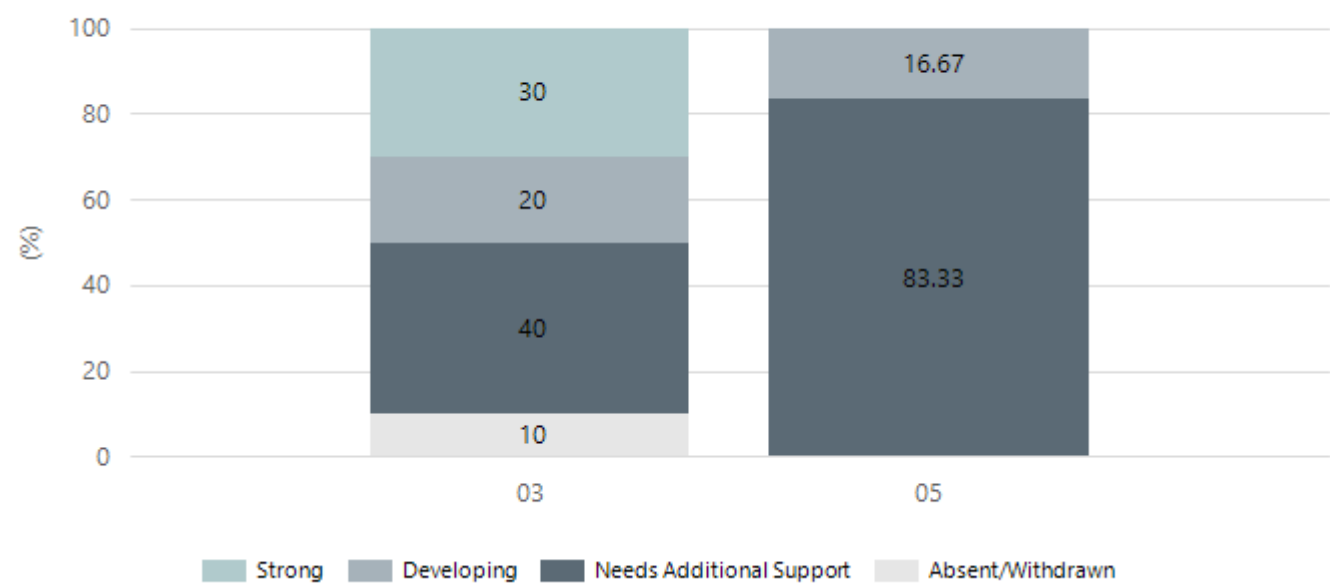
Thank you to all members of the Governing Council for your dedication and hard work. Your support has been invaluable in making these events possible.

## Performance Summary

### NAPLAN Proficiency

In 2023 the Australian Curriculum, Assessment and Reporting Authority (ACARA) - a Commonwealth Independent statutory authority - announced changes to NAPLAN performance reporting. The new approach replaces the previous numerical NAPLAN bands and the national minimum standard.

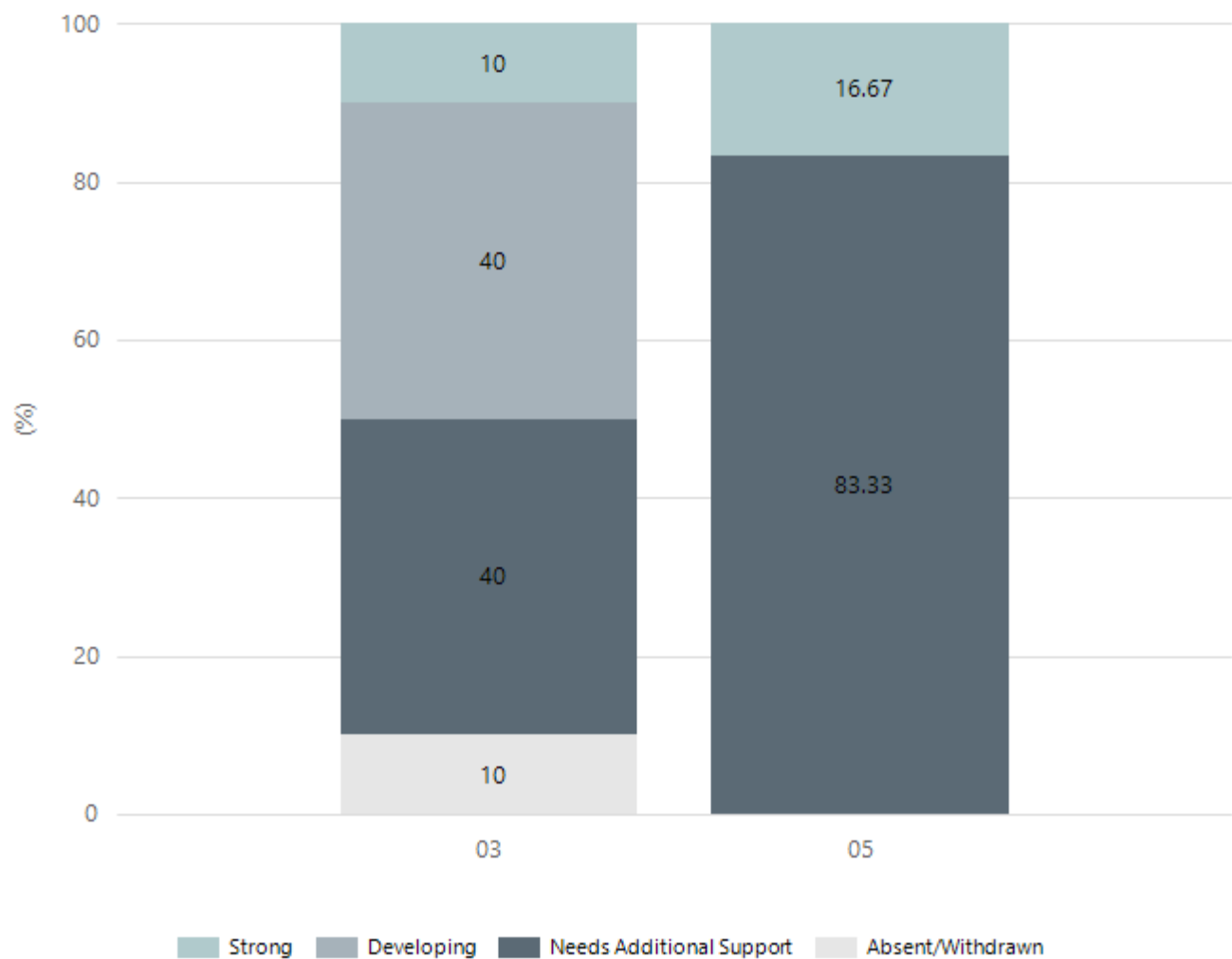
Numeracy



Year Level	03	05
Strong	3	
Developing	2	1
Needs Additional Support	4	5
Absent/Withdrawn	1	
Total	10	6

Data Source: Department for Education Assessment Data Holdings, 2024. If there are less than 6 students who sat NAPLAN in a school, no information will be shown. If a year level has less than 6 students, that year level will not be shown in NAPLAN results.

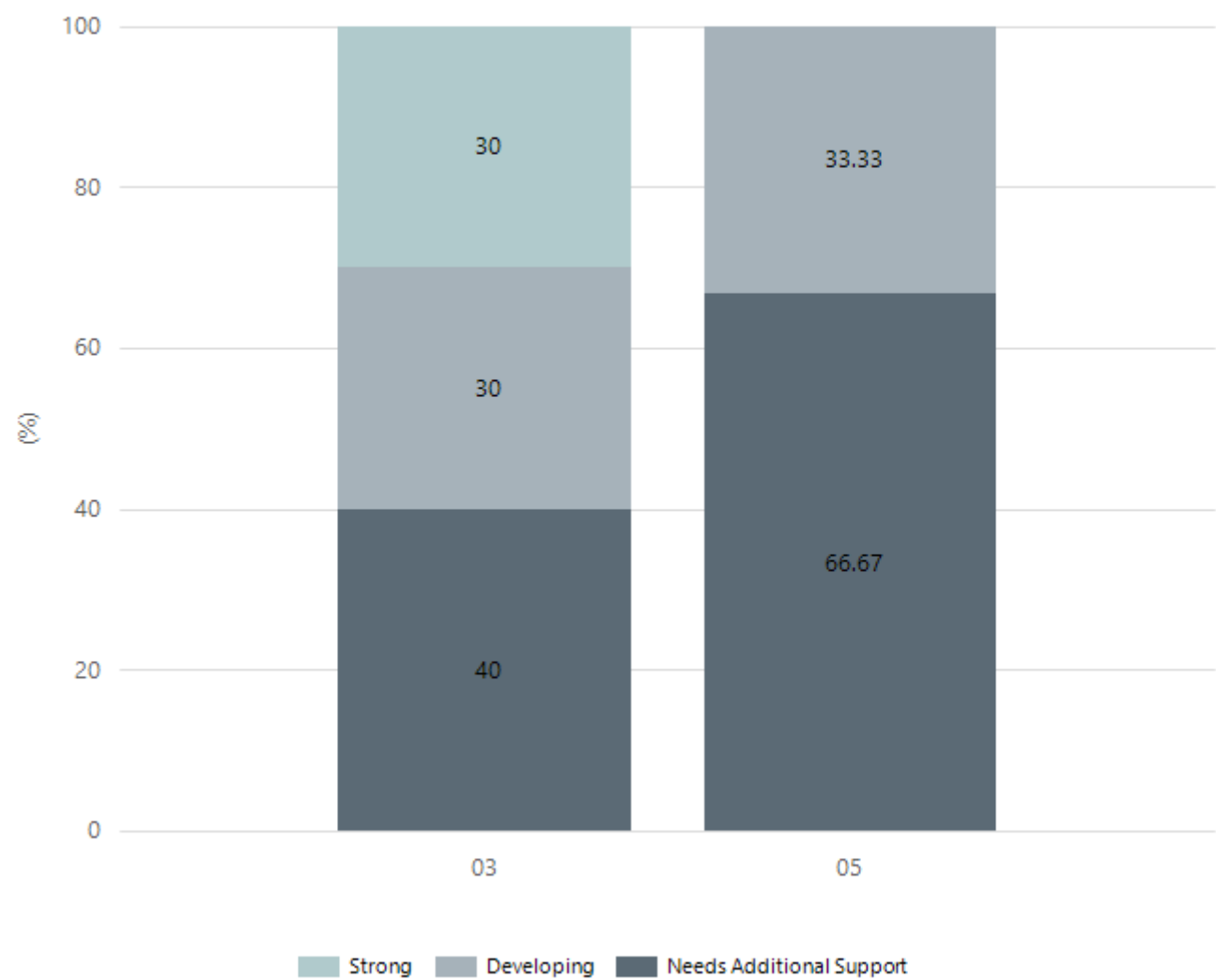
Reading



Year Level	03	05
Strong	1	1
Developing	4	
Needs Additional Support	4	5
Absent/Withdrawn	1	
Total	10	6

Data Source: Department for Education Assessment Data Holdings, 2024. If there are less than 6 students who sat NAPLAN in a school, no information will be shown. If a year level has less than 6 students, that year level will not be shown in NAPLAN results.

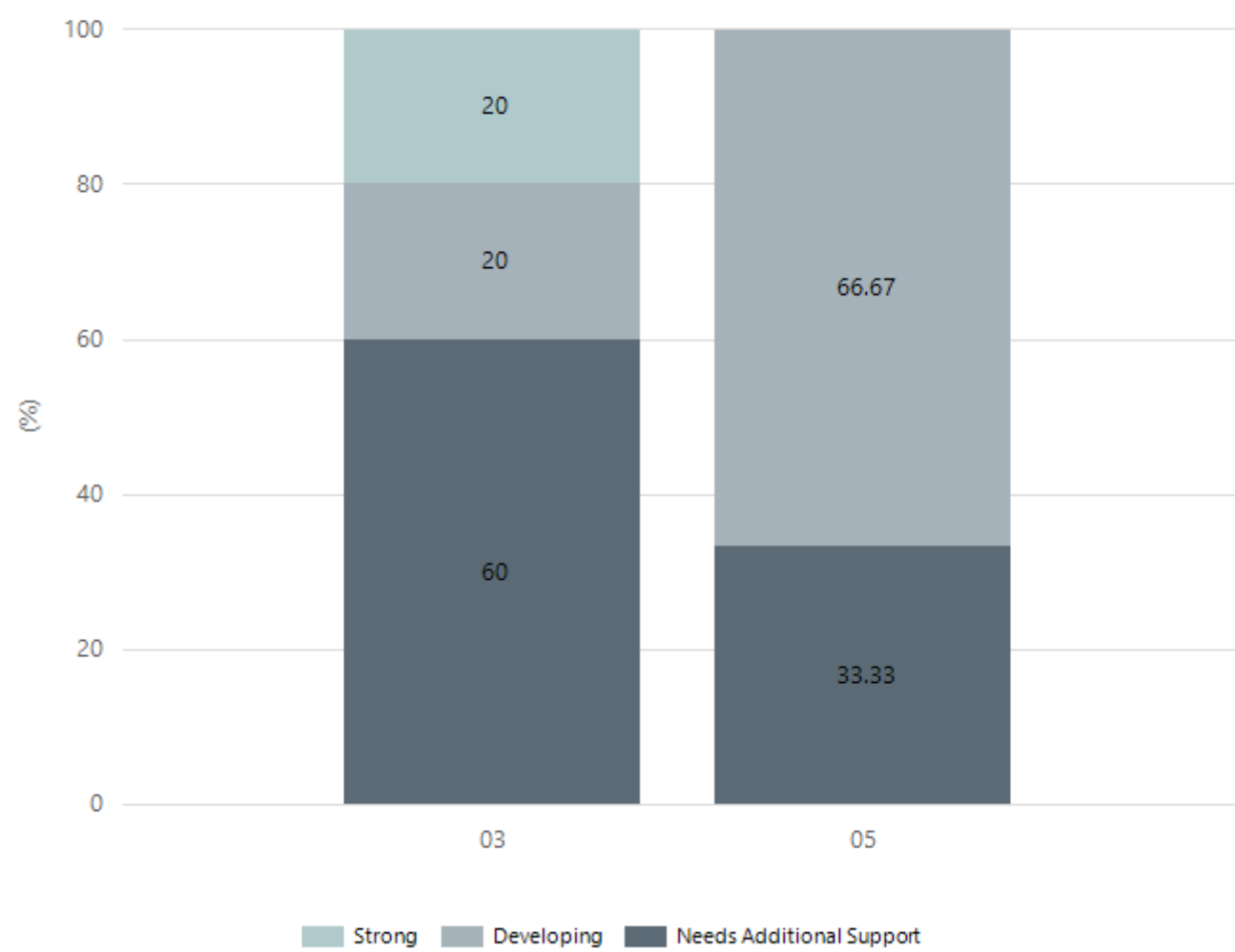
Writing



Year Level	03	05
Strong	3	
Developing	3	2
Needs Additional Support	4	4
Total	10	6

Data Source: Department for Education Assessment Data Holdings, 2024. If there are less than 6 students who sat NAPLAN in a school, no information will be shown. If a year level has less than 6 students, that year level will not be shown in NAPLAN results.

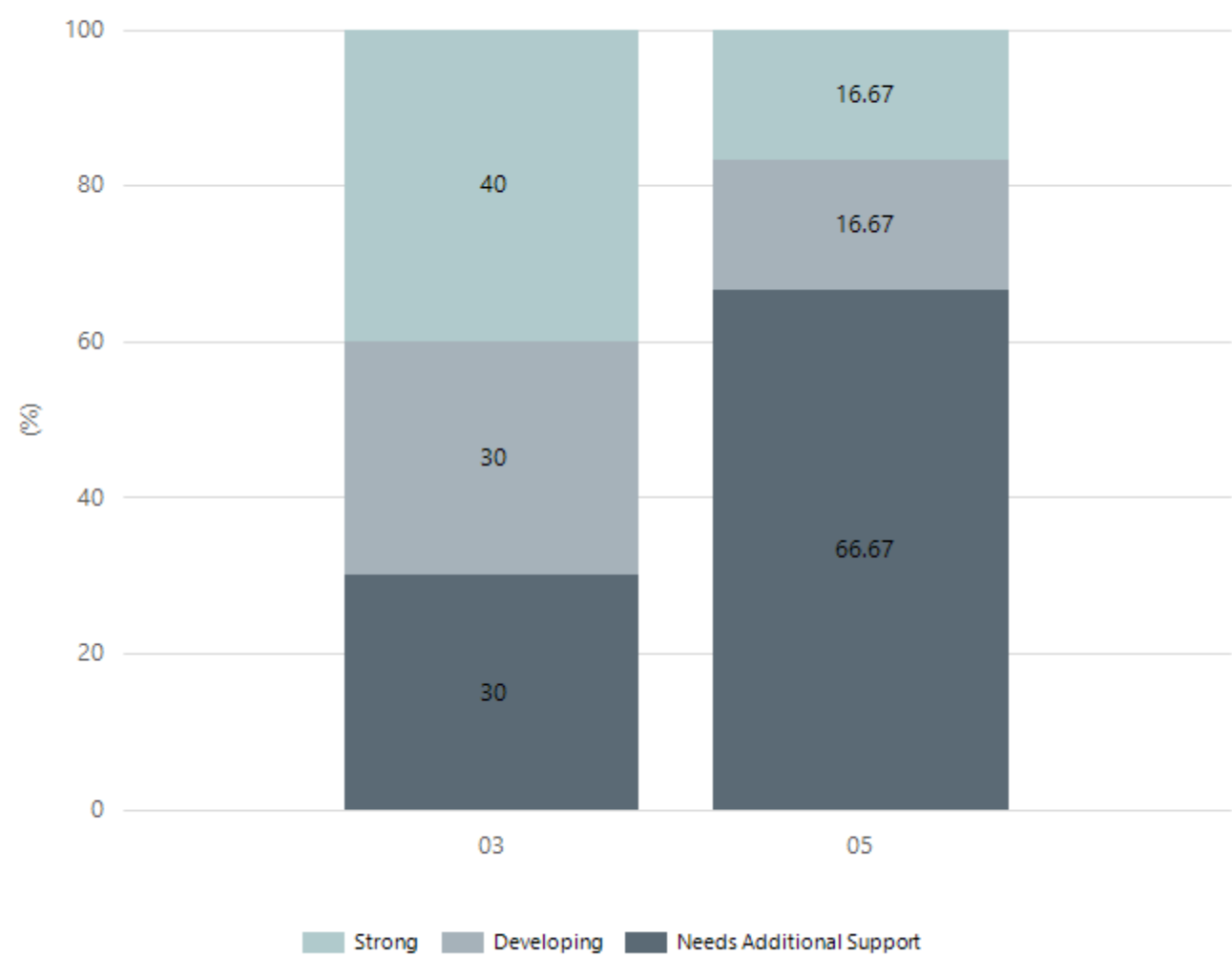
Grammar



Year Level	03	05
Strong	2	
Developing	2	4
Needs Additional Support	6	2
Total	10	6

Data Source: Department for Education Assessment Data Holdings, 2024. If there are less than 6 students who sat NAPLAN in a school, no information will be shown. If a year level has less than 6 students, that year level will not be shown in NAPLAN results.

Spelling



Year Level	03	05
Strong	4	1
Developing	3	1
Needs Additional Support	3	4
Total	10	6

Data Source: Department for Education Assessment Data Holdings, 2024. If there are less than 6 students who sat NAPLAN in a school, no information will be shown. If a year level has less than 6 students, that year level will not be shown in NAPLAN results.



# Preschool Attendance

	Term 1	Term 2	Term 3	Term 4
2021 centre	64.8%	78.9%	66.8%	71.5%
2022 centre	59.1%	65.6%	63.6%	72.7%
2023 centre	89.1%	88.3%	88.9%	81.2%
2024 centre	75%		60.1%	

Based on attendances recorded in the two-week reference period each term. Data for eligible enrolments as described in the department's Enrolment policy. Attendance rates may differ to previous reporting with the transfer from calculations based on deemed attendance to actual attendance using booked hours divided by attended hours. Data Source: Department for Education Attendance Data, Semester 1 Report 2024. A blank cell indicates there we no students enrolled.

# School Attendance

Year Level	2022	2023	2024
Reception	60.2%	61.9%	84.0%
Year 01	78.6%	79.5%	74.0%
Year 02	66.0%	90.7%	85.4%
Year 03	56.7%	69.8%	79.9%
Year 04	66.4%	75.4%	78.6%
Year 05	55.1%	70.8%	74.3%
Year 06	45.5%	82.0%	63.8%
Year 07	32.8%		
Total	59.4%	74.1%	77.1%

Data Source: Department for Education Attendance Data, Semester 1 Report 2024. A blank cell indicates there we no students enrolled. 'Primary Other' includes students enrolled in specialised education options. 'Secondary Other' includes students who have already spent a year at Year 12 and elected to undertake further study at Year 12.

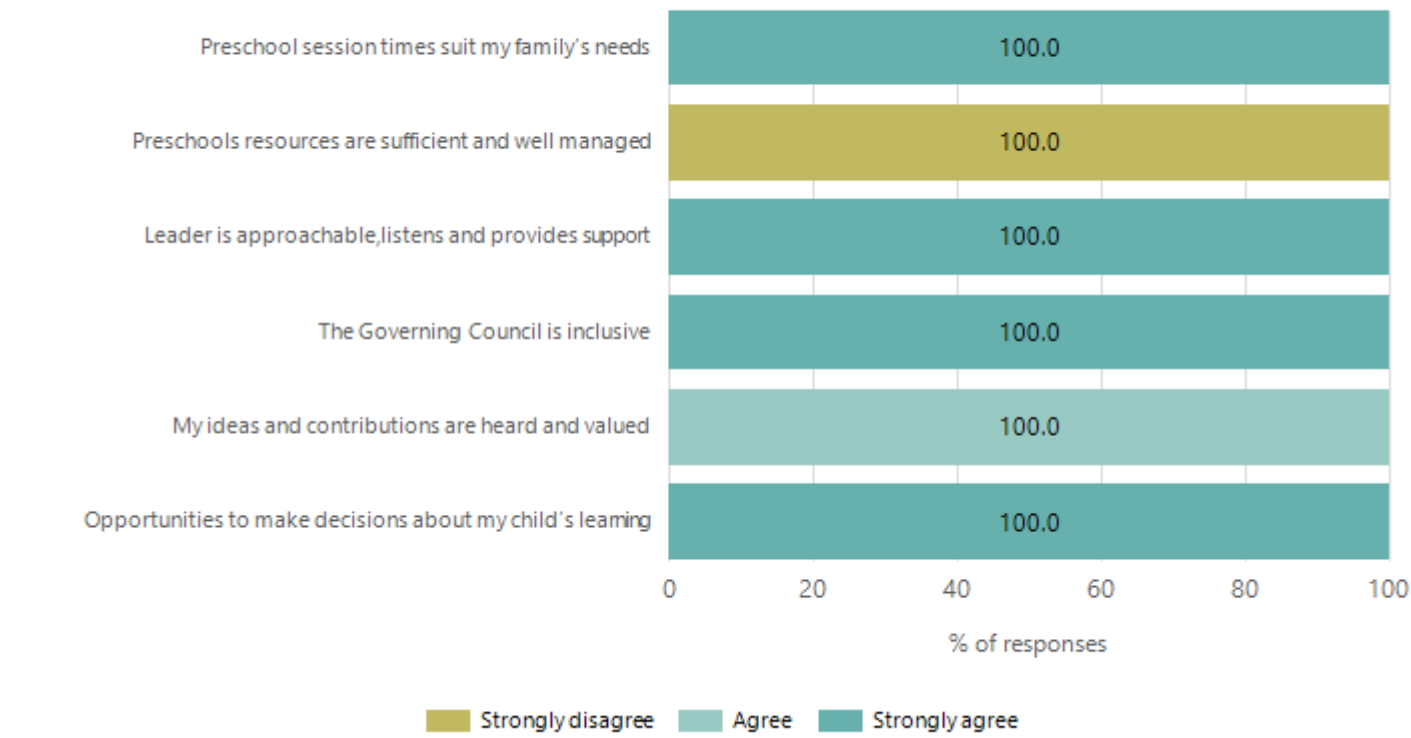
# Attendance Comment

In South Australia, preschool attendance is not compulsory, but it is strongly encouraged. Preschool gives children the best opportunity to develop skills, which prepare them for school. These benefits include establishing positive routines and habits, friendships and connections as well as developing communication, problem-solving and creative skills. All children are entitled to access a preschool program over 4 terms the year before they start school.

In South Australia, all children and young people must be in school from 6 years to 16 years old. They must attend a government or non-government school full time. From age 16 to 17 however, young people must attend school or an approved learning program (such as an apprenticeship, traineeship, accredited course or university). Schools and parents must encourage and support students to come to school every day. Parents and caregivers must make sure their child is enrolled in a school, and attends school all day and everyday it is open, unless a child is sick or has an approved exemption. Teachers and leaders actively follow up when a student misses school, including recording all absences and non-attendance. All schools in South Australia have local attendance procedures governed under the Education and Children's Services Regulations 2020.

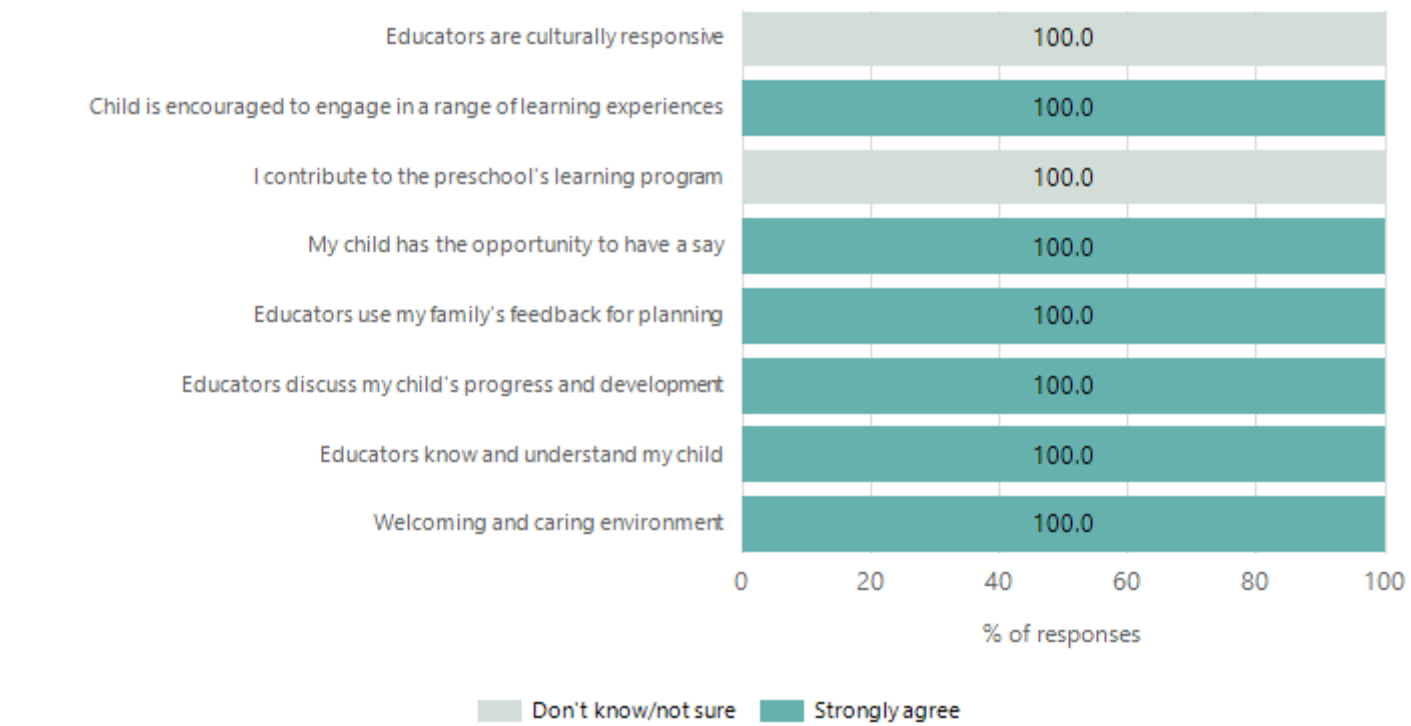
# Preschool Family Opinion Survey

## Governance, Leadership and Management



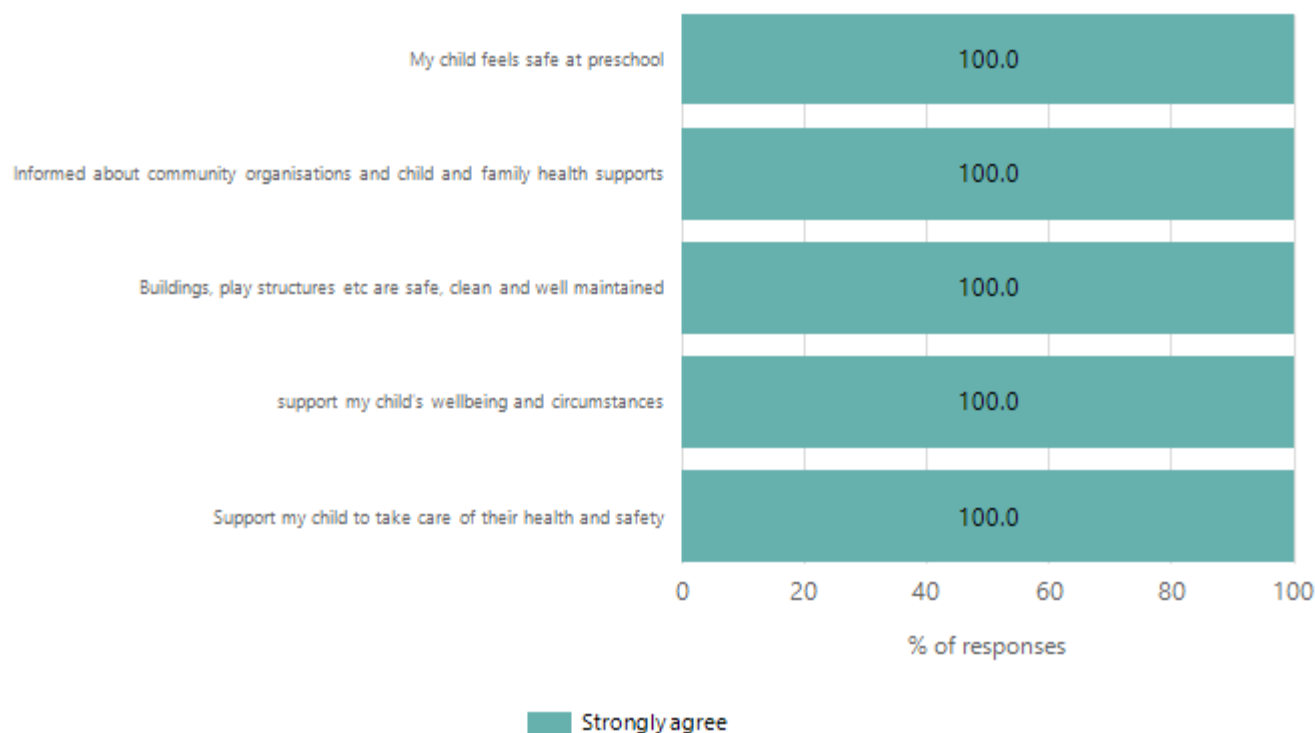
Data Source: 2024 Department for Education Preschool Family Opinions Survey, Term 3 2024.

## Quality of Teaching and Learning



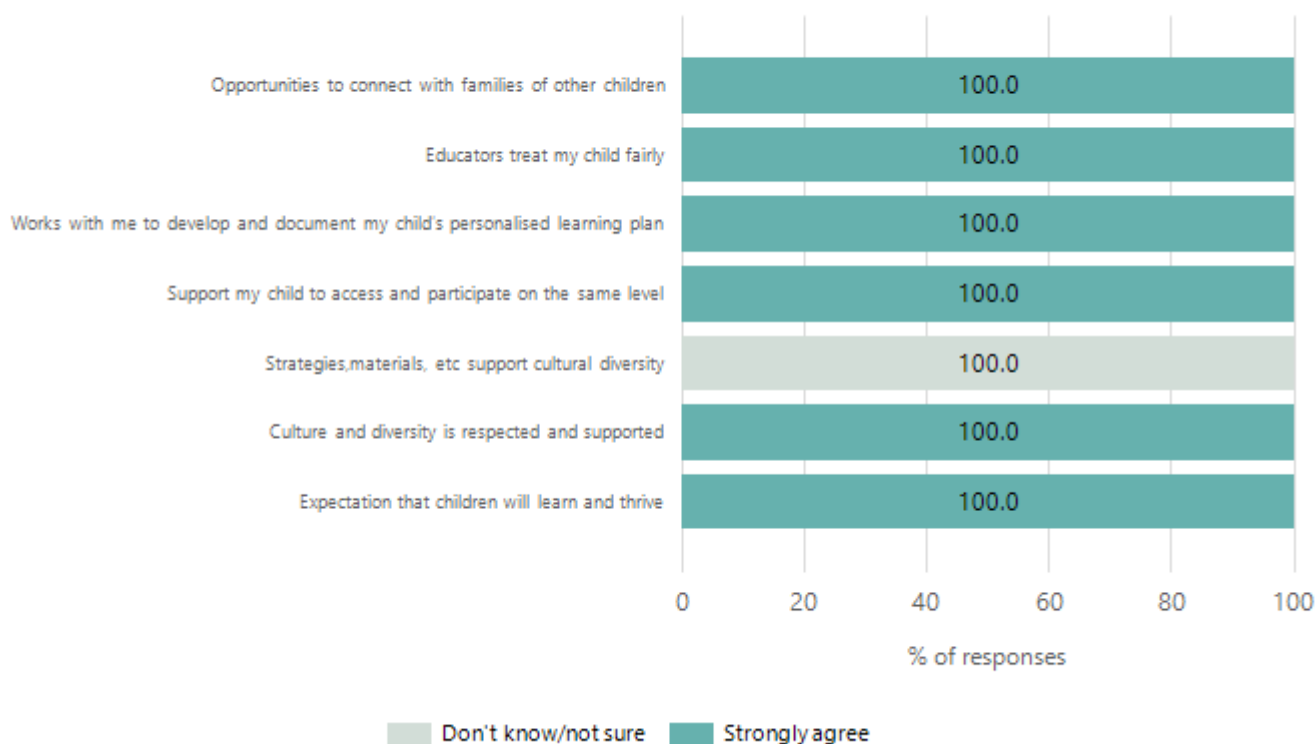
Data Source: 2024 Department for Education Preschool Family Opinions Survey, Term 3 2024.

## Safety, Health and Wellbeing



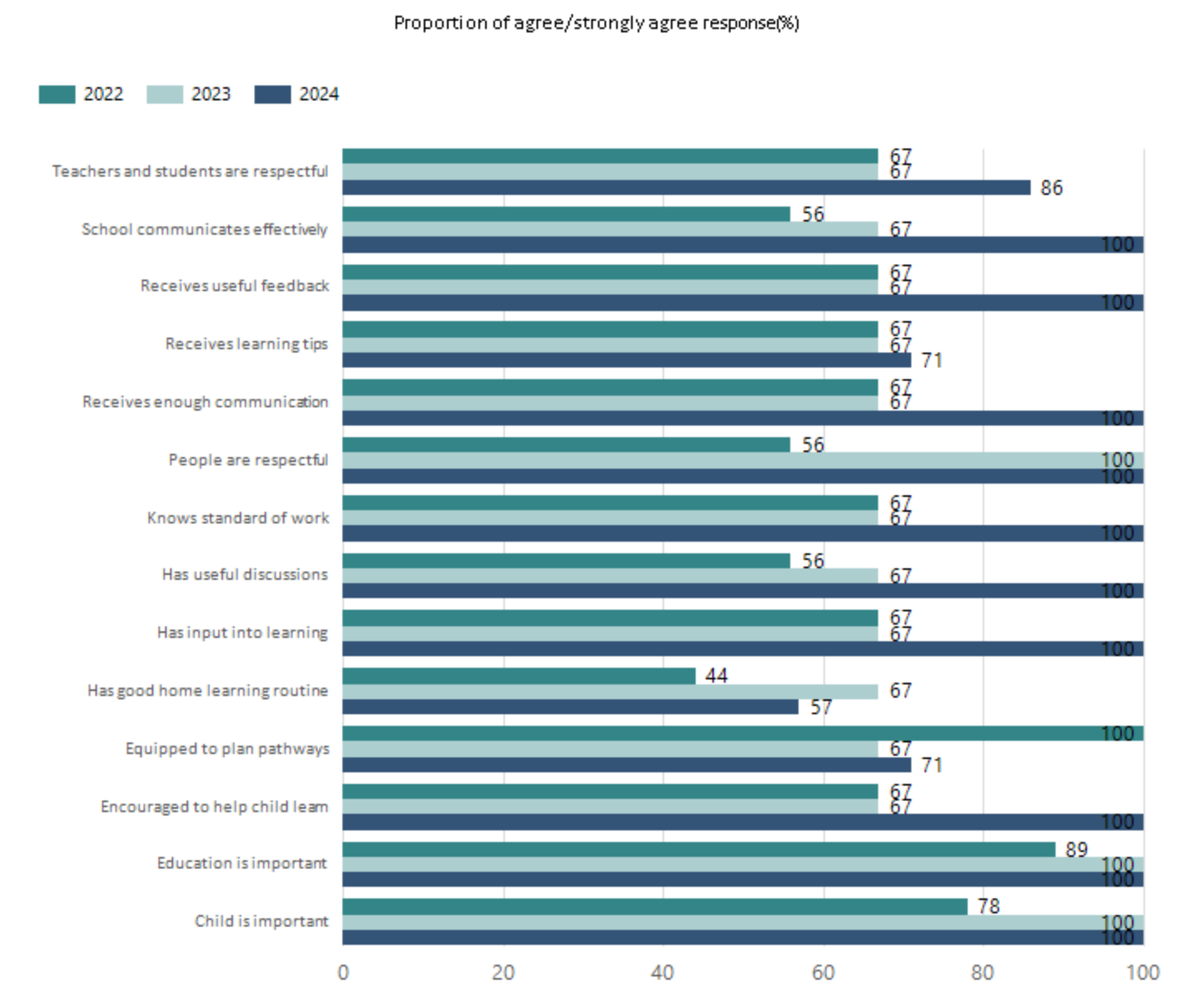
Data Source: 2024 Department for Education Preschool Family Opinions Survey, Term 3 2024.

## Support and Inclusion



Data Source: 2024 Department for Education Preschool Family Opinions Survey, Term 3 2024.

# School Parent Opinion Survey Results



Data Source: 2024 Department for Education Parent Opinions Survey, Term 3 2024.

# Destination Schools

Feeder Schools (Site number - Name)	2022	2023	2024
0194 - Jervois Primary School		5.6%	
0299 - Murray Bridge North School			5.6%
0950 - Murray Bridge South Primary School		5.6%	
1382 - Fraser Park Primary School	54.6%	55.6%	50.0%
8203 - Tyndale Christian College-Murray Bridge Incorporat	9.1%	11.1%	16.7%
9049 - St Joseph's School - Murray Bridge	9.1%	5.6%	
9999 - Unknown	27.3%	16.7%	27.8%

Note: The data is collected in term 3. It does not reflect actual schools enrolled in by existing preschool children. A blank cell indicates there was no data for students enrolled.

Data Source: Department for Education Destination Data Report, 2024.

# Intended Destination

Leave Reason	Number	%
NG - ATTENDING NON-GOV SCHOOL IN SA	6	19.0%
TG - TRANSFERRED TO SA GOVERNMENT SCHOOL	25	78.0%
U - UNKNOWN	1	3.0%

Data Source: Department for Education Destination Data Report, 2024. Data extract term 3 2024. Data shows recorded destinations for students that left the school in the previous year. Data is uploaded by schools in term 3 and may not reflect final or total figures at time of report creation.

# Highest Qualifications held by the teaching workforce and workforce composition

All teachers at this school are qualified and registered with the SA Teachers Registration Board.

Qualification Level	Number of Qualifications
Bachelor's degrees or Diplomas	9
Postgraduate Qualifications	1

Data Source: Data extracted from Mandatory Workforce Information Collections as on the last pay date of June 2024. As self-reported by staff in the system.

Please note: Data includes staff who are Actively employed and on extended paid leave. Please note only the highest qualification of the Teaching staff is reported. Excludes any number of other certifications earned.

## Workforce composition including indigenous staff

	Teaching Staff		Non-Teaching Staff	
	Indigenous	Non-Indigenous	Indigenous	Non-Indigenous
Full-Time Equivalents	1.0	8.9	1.2	6.3
Persons	1.0	10.0	2.0	10.0

Data Source: Data extracted from Mandatory Workforce Information Collection as on the last pay date of June 2024.

Please note: Data includes staff who are actively employed and on extended paid leave. "Indigenous category" is self-reported by staff in the system.

# Financial Statement

Funding Source	Amount
Grants: State	1977258.00
Grants: Commonwealth	6850.00
Parent Contributions	21214.00
Fund Raising	2270.00
Other	16213.00

Data Source: School supplied data.