



2023 annual report to the Community

Karcultaby Area School and Karcultaby Preschool

Karcultaby Area School number: 1123

Karcultaby Preschool number: 6755

Partnership: Far West



School principal:

Signature:

Neil Seaman

A handwritten signature in black ink that reads 'Neil Seaman'.

Date of endorsement:

12/02/2024



Government
of South Australia
Department for Education

Context Statement

Karcultaby Area School caters for students from R-12. At the time of this report, the enrolment in 2023 is 71. Karcultaby Area School is classified as Category 6 on the Department for Education Index of Educational Disadvantage. At the time of this report, the school population includes 4% Aboriginal students, 3% students with disabilities. Further information about the school is available on the school's website (including its context statement), as well as the My School website.

Governing Council Report

KARCULTABY AREA SCHOOL GOVERNING COUNCIL MISSION STATEMENT

We, as KAS Governing Council Representatives, are obligated to positively promote our school values of respect, responsibility, and perseverance in decisions we make for our school's future pathways and, above all, to assist and give our students the best opportunities to reach their goals and become "lifelong learners".

We started off the new school year under new leadership, welcoming Neil Seaman as acting Principal.

We had our governing council AGM on the 14/2/23. The council for 2023 consisted of Shaun Carey (Chairperson) Rhys Tomney (Vice Chairperson) Stacey Brace (Secretary) Stephanie Hull (Treasurer), Sharyn Feltus, Kate Baker, Kerri-Ann Gill, Tammie Mullen, Roanne Scholz, Jade Lynch, Melissa Gregory, Tegan Hull, Judi Antonio (Staff Representative) and Neil Seaman (Principal). Thank you to all Governing Council members for your support, participation and contributions during the year and striving to represent the views of the school community.

It was great to see normality return to the sporting schedule this year when in February we were able to host our combined swimming carnival with Miltaburra Area School, at the Minnipa Pool. This was a successful day with lots of cheering and sportsmanship and fun was had by all. It was especially great to finish the day with a Parent, Teacher & Student Relay, not sure about the end result though, us parents better get some training in before we face off again in 2024. Later in term 1, we headed to Wirrulla, for the combined sports day with Miltaburra Area School. Again it was a great day, with lots of encouraging and sportsmanship going on between students. The following week we were able to showcase our sporting ability at Streaky Bay for Interschool Athletics. Amazing we won the Handicap Sheild which is a credit to our school and everyone who participated.

After another successful cropping season in 2022, we have been able to reinvest some of the funds raised into improving school facilities. The major investment this year being an additional Ag shed. It has taken some time to plan and execute, it is great to see the works finally begin. We hope that the improved facility will enhance the ag curriculum at KAS, especially the LED wether program, by providing a more versatile learning space. We are looking forward to this project being completed early next year.

Congratulations to all the staff on a successful year, your dedication and commitment to Karcultaby and providing quality education to all students is to be commended. Well done to all students for completing another school year with respect, responsibility and perseverance. It has been really great to see a strong focus being placed on the school values this year and the addition of the values awards each term. It certainly has provided a great opportunity for all students to thrive and achieve.

It was fantastic to see students represent Karcultaby with a high standard at all events attended throughout the year. Achieving great success at Interschool Swimming and athletics, Tcharkulda Cross Country, Adelaide Show Led wether, SAPSASA, Interschool Gymkhana. Thankyou to all parents and community members who assisted and supported in preparation for and at these events. Congratulations to Daniel, Nathan, Josiah and Sahryah on completing year 12, we wish you well in all your future endeavours.

During the year the position of Karcultaby School Principal was advertised, and we were successful in gaining applications. The Governing Council was involved in setting the criteria for what qualities we are advertising for with this leadership position. Furthermore, as Governing Council Chairperson I had the absolute privilege of being on the selection committee. We congratulate Neil on successfully securing the position for the next 5 years. Already Neil has shown that he is eager to further improve our already great school and we look forward to working with Neil in the coming years as Karcultaby continues to strive to provide the best possible education and schooling opportunities for our little community.

Shaun Carey

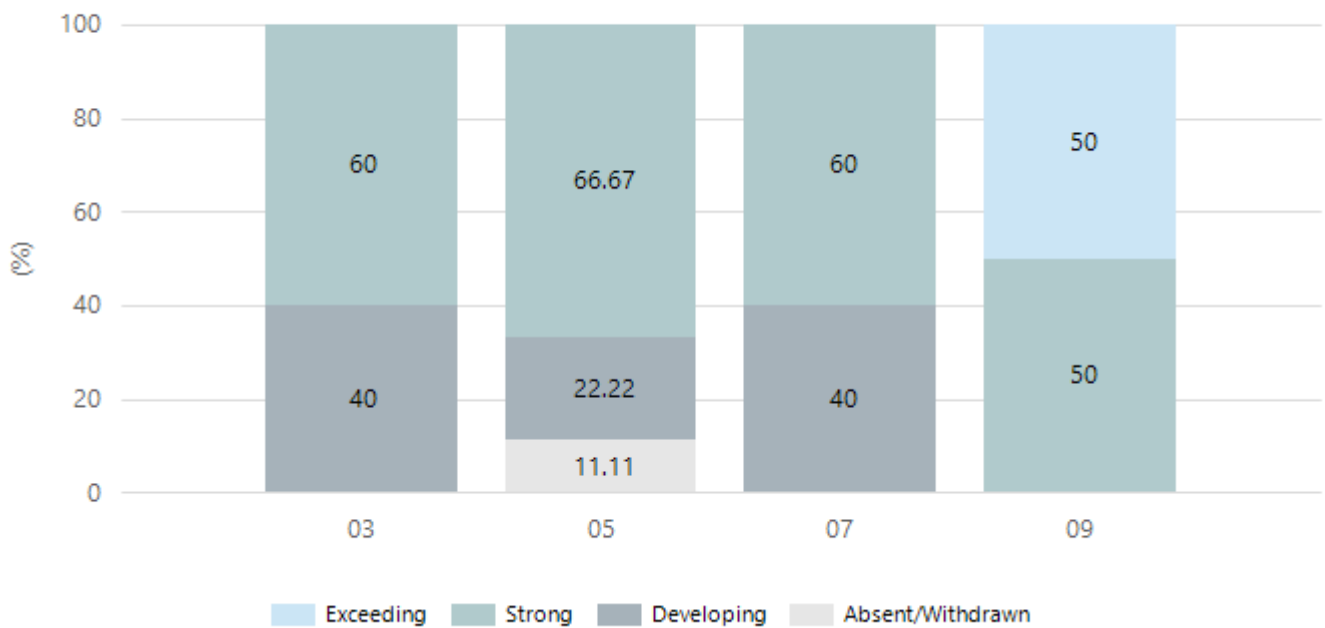
Chairperson

Performance Summary

NAPLAN Proficiency

In 2023, the Australian Curriculum, Assessment and Reporting Authority (ACARA) - a Commonwealth Independent statutory authority - announced changes to NAPLAN performance reporting. This new way of reporting by ACARA that NAPLAN results from 2023 will not be comparable to previous years. The new approach replaces the previous numerical NAPLAN bands and the national minimum standard.

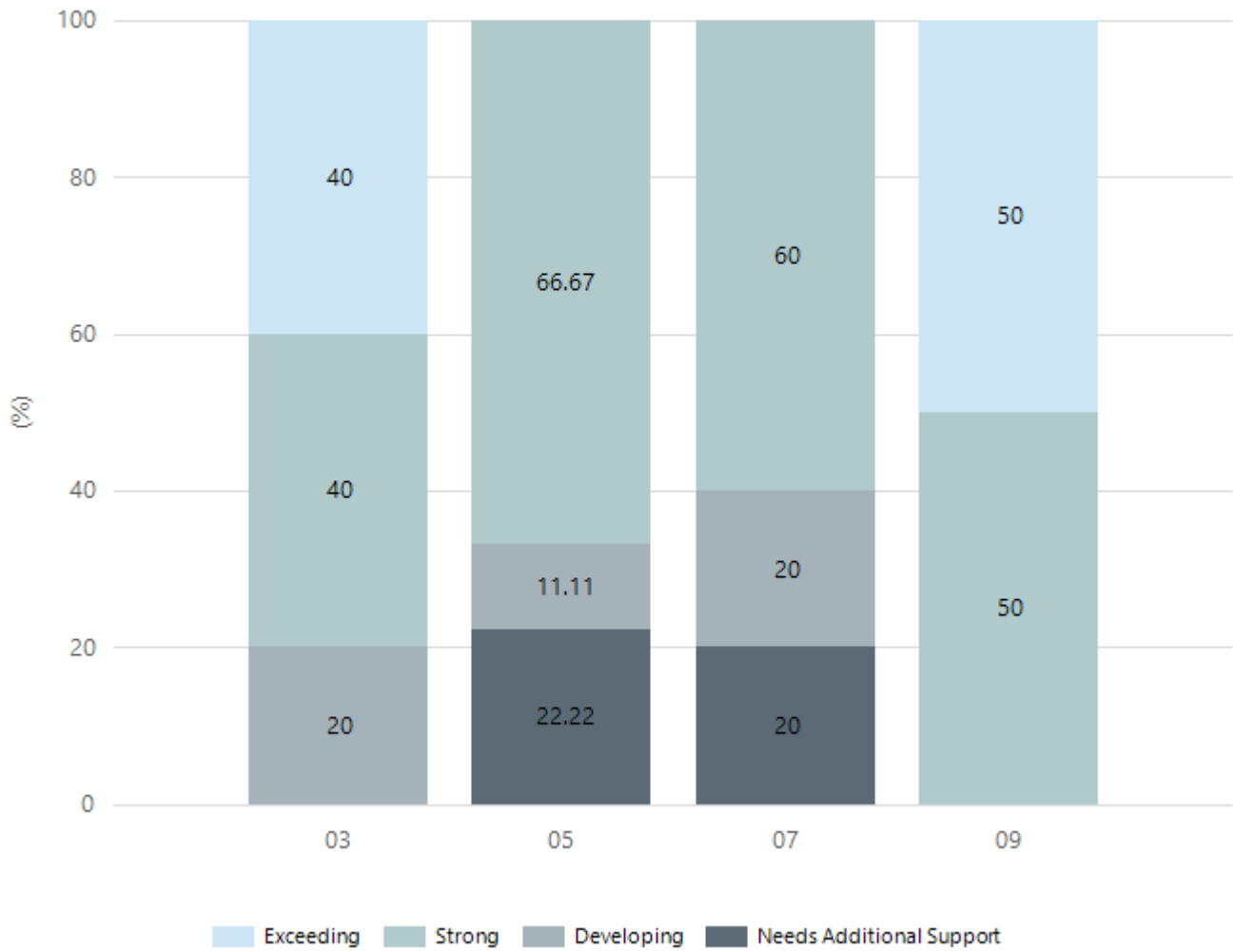
Numeracy



Year Level	03	05	07	09
Exceeding				1
Strong	3	6	3	1
Developing	2	2	2	
Absent/Withdrawn		1		
Total	5	9	5	2

Data Source: Department for Education Assessment Data Holdings, 2023. When there are less than six students in a cohort, no data is supplied.

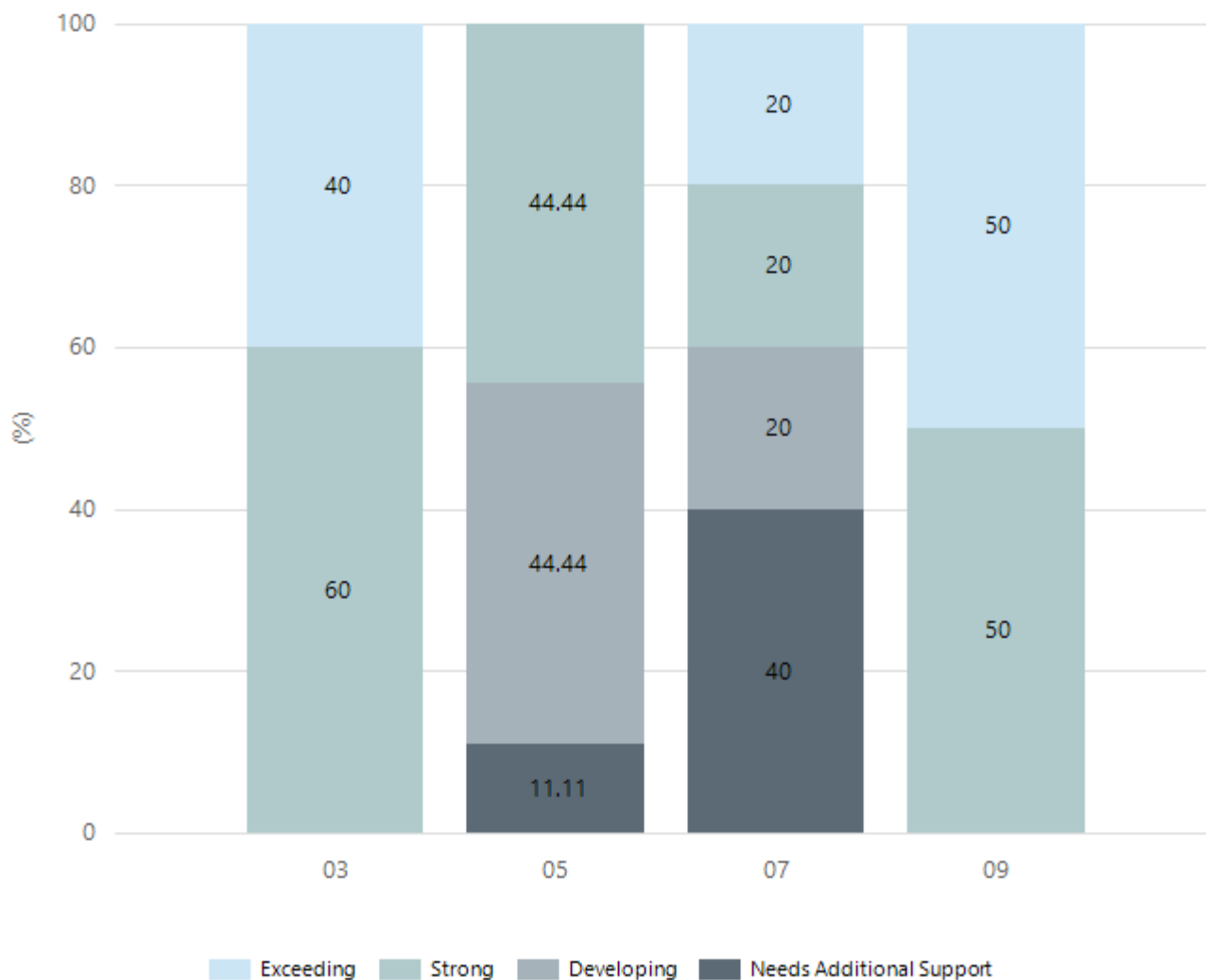
Reading



Year Level	03	05	07	09
Exceeding	2			1
Strong	2	6	3	1
Developing	1	1	1	
Needs Additional Support		2	1	
Total	5	9	5	2

Data Source: Department for Education Assessment Data Holdings, 2023. When there are less than six students in a cohort, no data is supplied.

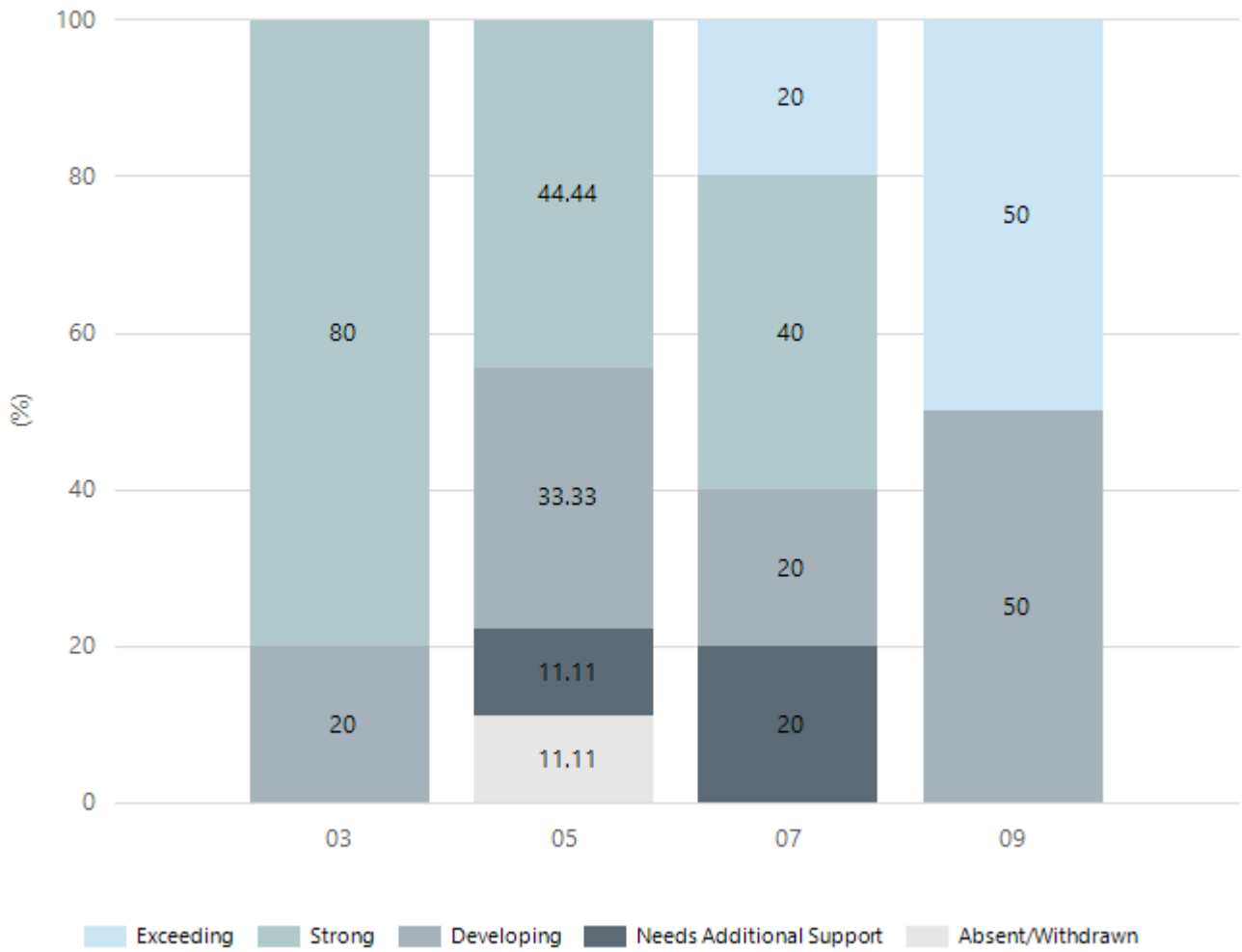
Writing



Year Level	03	05	07	09
Exceeding	2		1	1
Strong	3	4	1	1
Developing		4	1	
Needs Additional Support		1	2	
Total	5	9	5	2

Data Source: Department for Education Assessment Data Holdings, 2023. When there are less than six students in a cohort, no data is supplied.

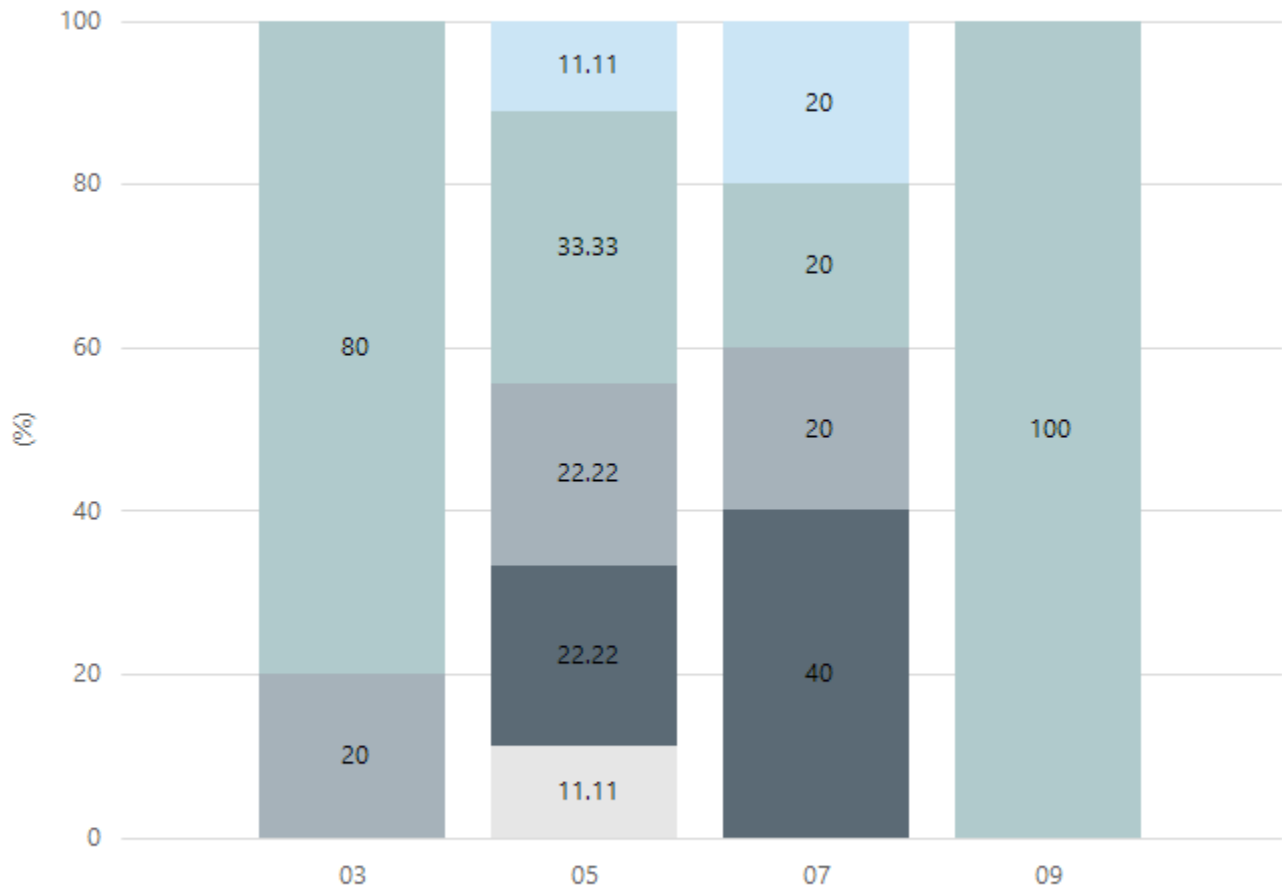
Grammar



Year Level	03	05	07	09
Exceeding			1	1
Strong	4	4	2	
Developing	1	3	1	1
Needs Additional Support		1	1	
Absent/Withdrawn		1		
Total	5	9	5	2

Data Source: Department for Education Assessment Data Holdings, 2023. When there are less than six students in a cohort, no data is supplied.

Spelling



Exceeding Strong Developing Needs Additional Support Absent/Withdrawn

Year Level	03	05	07	09
Exceeding		1	1	
Strong	4	3	1	2
Developing	1	2	1	
Needs Additional Support		2	2	
Absent/Withdrawn		1		
Total	5	9	5	2

Data Source: Department for Education Assessment Data Holdings, 2023. When there are less than six students in a cohort, no data is supplied.

Year 12 Students undertaking Vocational or Trade Training (VET)

	2021	2022	2023
Percentage of Year 12 students undertaking Vocational Training or Trade Training	0%	50%	100%
Percentage of Year 12 students attaining a Year 12 certificate or equivalent VET qualification	100%	100%	75%

Data Source: School supplied data

Preschool Attendance

	Term 1	Term 2	Term 3	Term 4
2020 centre	100%	90.5%	71.4%	85.7%
2021 centre	100%	93.8%	95%	90%
2022 centre	72.5%	84.4%	84.4%	90.9%
2023 centre	91.7%	63.3%	59.5%	95%
2020 state	89.1%	81.8%	84.6%	85.8%
2021 state	87.3%	85.3%	87.1%	84.5%
2022 state	83.6%	77.6%	77.9%	77.8%
2023 state	85.4%	82.9%	83.4%	81.4%

Based on attendances recorded in the two-week reference period each term. Data for eligible enrolments as described in the department's Enrolment policy. Attendance rates may differ to previous reporting with the transfer from calculations based on deemed attendance to actual attendance using booked hours divided by attended hours. Data Source: Department for Education Attendance Data, Semester 1 Report 2023. A blank cell indicates there were no students enrolled.

Note: Term 2 2020 data may not be available for all preschools.

School Attendance

Year Level	2021	2022	2023
Reception	81.0%	77.0%	76.7%
Year 01	79.6%	82.0%	89.4%
Year 02	93.8%	77.5%	84.3%
Year 03	87.9%	85.3%	85.7%
Year 04	94.4%	82.3%	94.4%
Year 05	90.4%	81.4%	85.3%
Year 06	91.2%	78.6%	85.0%
Year 07	91.1%	85.4%	93.1%
Year 08	91.6%	85.8%	85.0%
Year 09	83.4%	84.6%	84.4%
Year 10	93.4%	84.0%	87.7%
Year 11	94.1%	90.3%	42.0%
Year 12	94.9%	76.0%	
Total	89.7%	82.3%	82.8%

Data Source: Department for Education Attendance Data, Semester 1 Report 2023. A blank cell indicates there were no students enrolled. 'Primary Other' includes students enrolled in specialised education options. 'Secondary Other' includes students who have already spent a year at Year 12 and elected to undertake further study at Year 12.

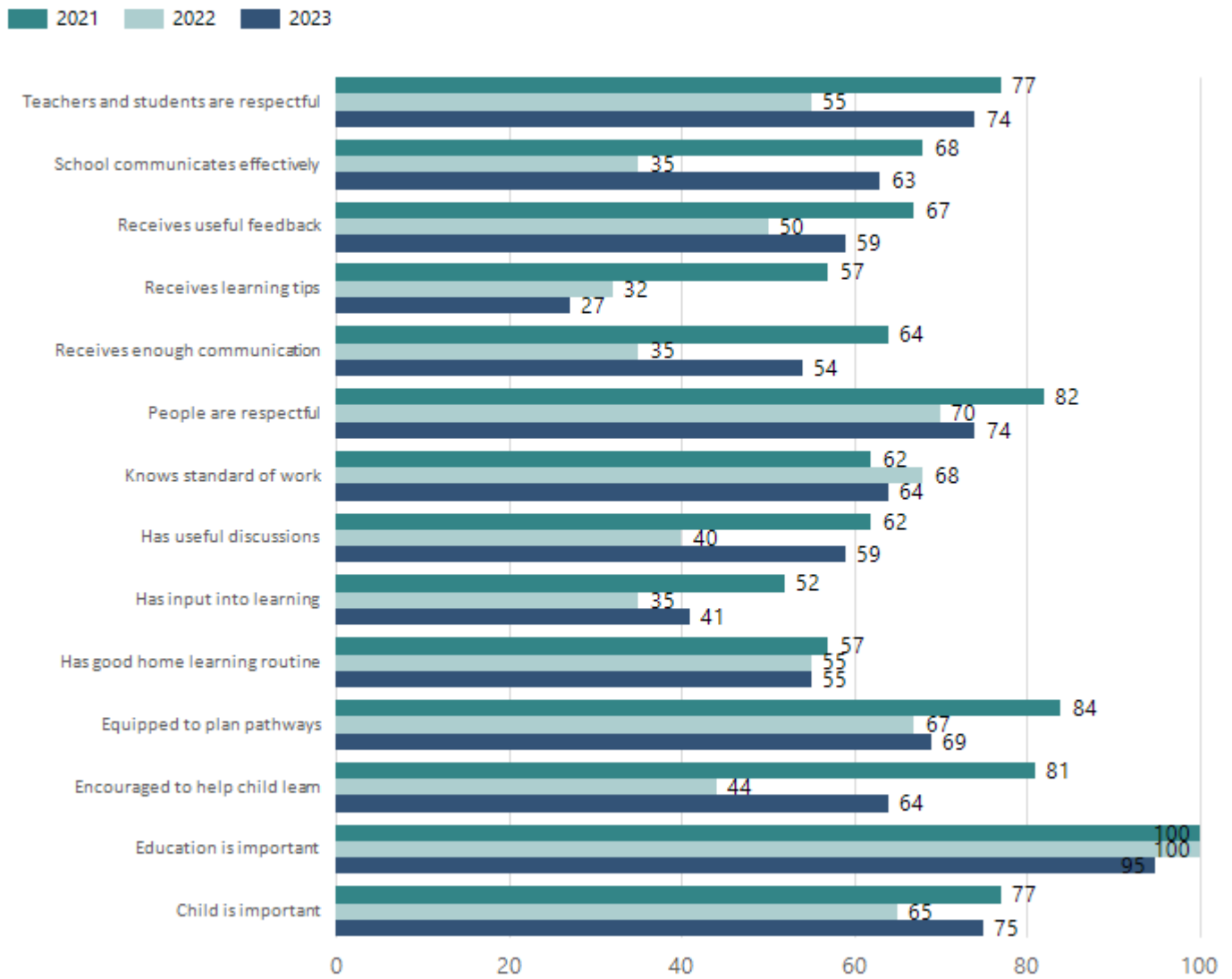
Attendance Comment

In South Australia, preschool attendance is not compulsory, but it is strongly encouraged. Preschool gives children the best opportunity to develop skills, which prepare them for school. These benefits include establishing positive routines and habits, friendships and connections as well as developing communication, problem-solving and creative skills. All children are entitled to access a preschool program over 4 terms the year before they start school.

In South Australia, all children and young people must be in school from 6 years to 16 years old. They must attend a government or non-government school full time. From age 16 to 17 however, young people must attend school or an approved learning program (such as an apprenticeship, traineeship, accredited course or university). Schools and parents must encourage and support students to come to school every day. Parents and caregivers must make sure their child is enrolled in a school, and attends school all day and everyday it is open, unless a child is sick or has an approved exemption. Teachers and leaders actively follow up when a student misses school, including recording all absences and non-attendance. All schools in South Australia have local attendance procedures governed under the Education and Children's Services Regulations 2020.

Parent Opinion Survey Results

Proportion of agree/strongly agree response(%)



Data Source: 2023 Department for Education Parent Opinions Survey, Term 3 2023.

Destination Schools

Feeder Schools (Site number - Name)	2021	2022	2023
1123 - Karcultaby Area School	100.0%	100.0%	100.0%

Note: The data is collected in term 3. It does not reflect actual schools enrolled in by existing preschool children. A blank cell indicates there was no data for students enrolled.

Data Source: Department for Education Destination Data Report, 2023.

Intended Destination

Leave Reason	Number	%
NG - ATTENDING NON-GOV SCHOOL IN SA	5	45.0%
TG - TRANSFERRED TO SA GOVERNMENT SCHOOL	4	36.0%
U - UNKNOWN	2	18.0%

Data Source: Department for Education Destination Data Report, 2023. Data extract term 3 2023. Data shows recorded destinations for students that left the school in the previous year. Data is uploaded by schools in term 3 and may not reflect final or total figures at time of report creation.

Highest Qualifications held by the teaching workforce and workforce composition

All teachers at this school are qualified and registered with the SA Teachers Registration Board.

Qualification Level	Number of Qualifications
Bachelor's degrees or Diplomas	7
Postgraduate Qualifications	7

Data Source: Data extracted from Mandatory Workforce Information Collections as on the last pay date of June 2023. As self-reported by staff in the system.

Please note: Data includes staff who are Actively employed and on extended paid leave. Please note only the highest qualification of the Teaching staff is reported. Excludes any number of other certifications earned.

Workforce composition including indigenous staff

	Teaching Staff		Non-Teaching Staff	
	Indigenous	Non-Indigenous	Indigenous	Non-Indigenous
Full-Time Equivalents	0.0	10.5	0.0	4.6
Persons	0.0	14.0	0.0	8.0

Data Source: Data extracted from Mandatory Workforce Information Collection as on the last pay date of June 2023.

Please note: Data includes staff who are actively employed and on extended paid leave. "Indigenous category" is self-reported by staff in the system.

Financial Statement

Funding Source	Amount
Grants: State	\$2,054,707.70
Grants: Commonwealth	\$0.00
Parent Contributions	\$ 36,884.74
Fund Raising	\$96,575.25
Other	\$122,295.98

Data Source: School supplied data.