



2023 annual report to the Community

Paralowie School

Paralowie School number: 1099
Partnership: Orion



School principal:

Julie Wilson

Signature

Date of endorsement:

11/02/2024



Context Statement

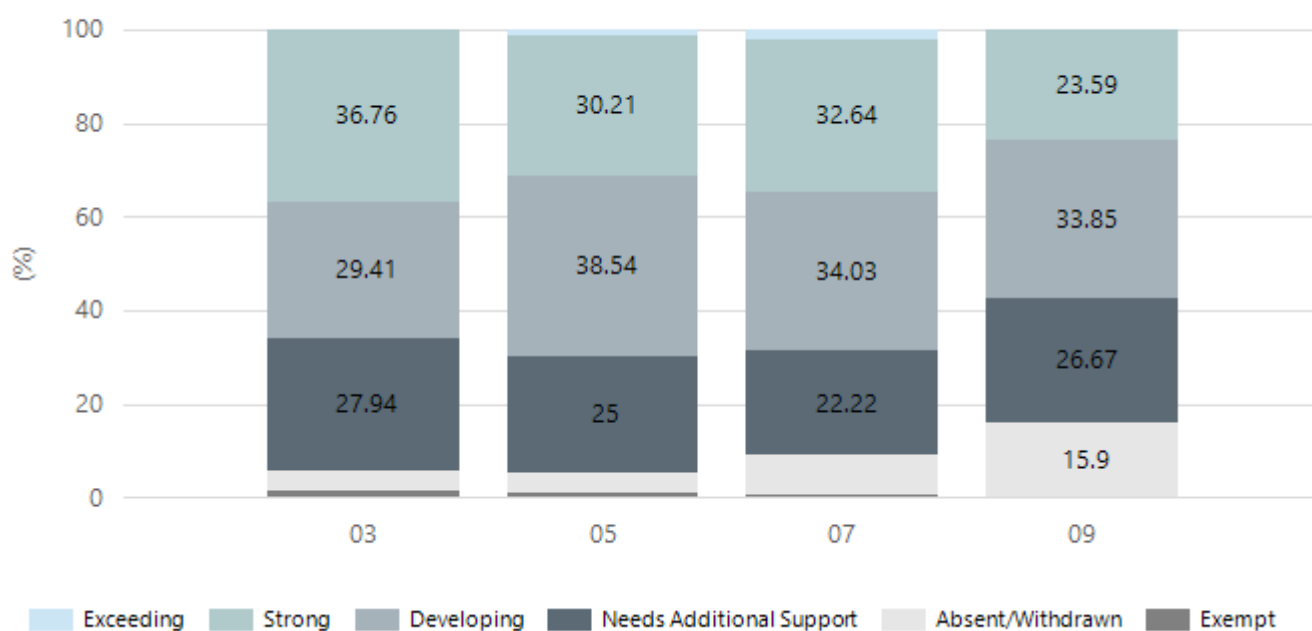
Paralowie School caters for students from R-12. At the time of this report, the enrolment in 2023 is 1488. Paralowie School is classified as Category 2 on the Department for Education Index of Educational Disadvantage. At the time of this report, the school population includes 9% Aboriginal students, 8% students with disabilities, 28% students with English as an additional language or dialect (EALD) funded background, 2% children/young people in care. Further information about the school is available on the school's website (including its context statement), as well as the My School website.

Performance Summary

NAPLAN Proficiency

In 2023, the Australian Curriculum, Assessment and Reporting Authority (ACARA) - a Commonwealth Independent statutory authority - announced changes to NAPLAN performance reporting. This new way of reporting by ACARA that NAPLAN results from 2023 will not be comparable to previous years. The new approach replaces the previous numerical NAPLAN bands and the national minimum standard.

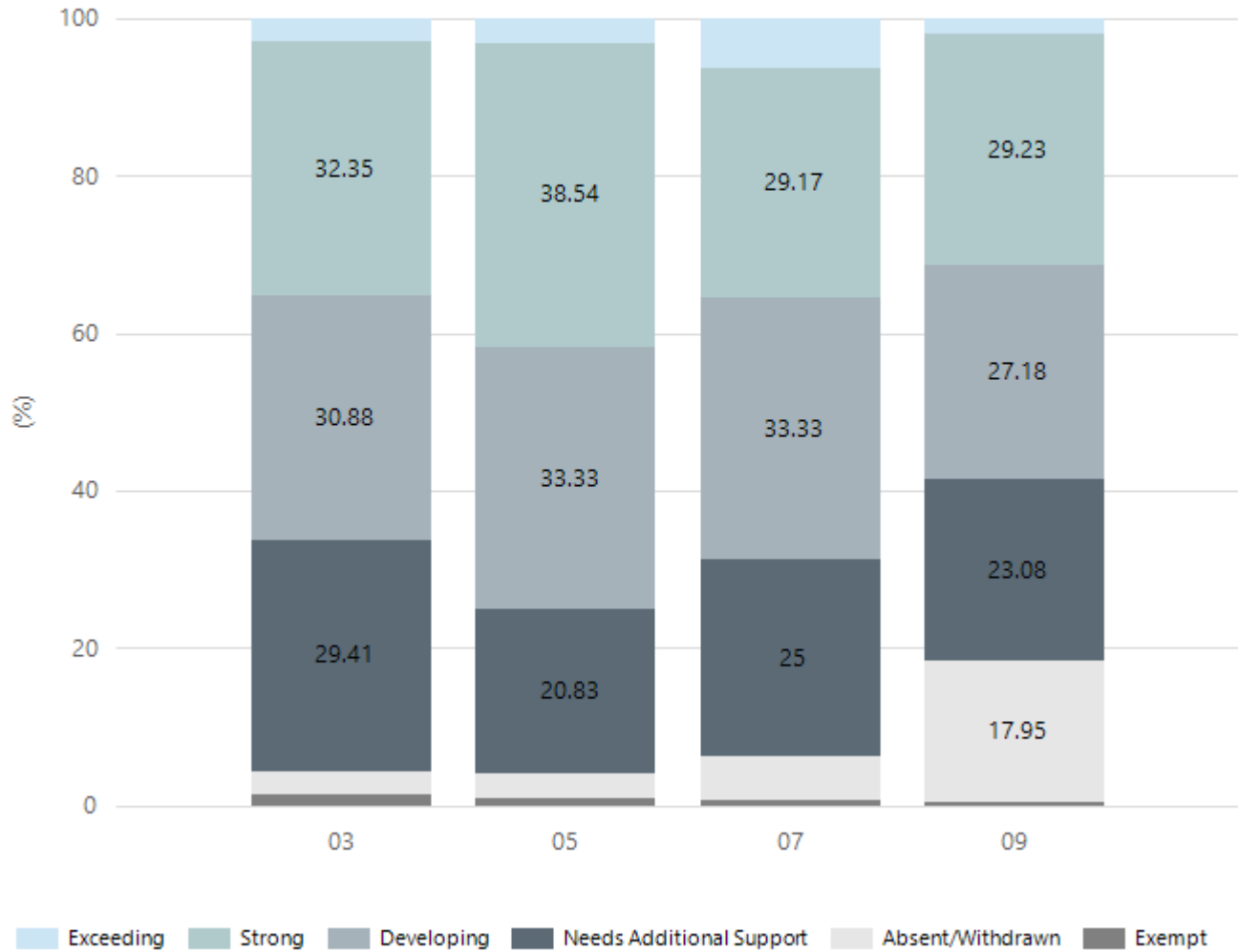
Numeracy



Year Level	03	05	07	09
Exceeding		1	3	
Strong	25	29	47	46
Developing	20	37	49	66
Needs Additional Support	19	24	32	52
Absent/Withdrawn	3	4	12	31
Exempt	1	1	1	
Total	68	96	144	195

Data Source: Department for Education Assessment Data Holdings, 2023. When there are less than six students in a cohort, no data is supplied.

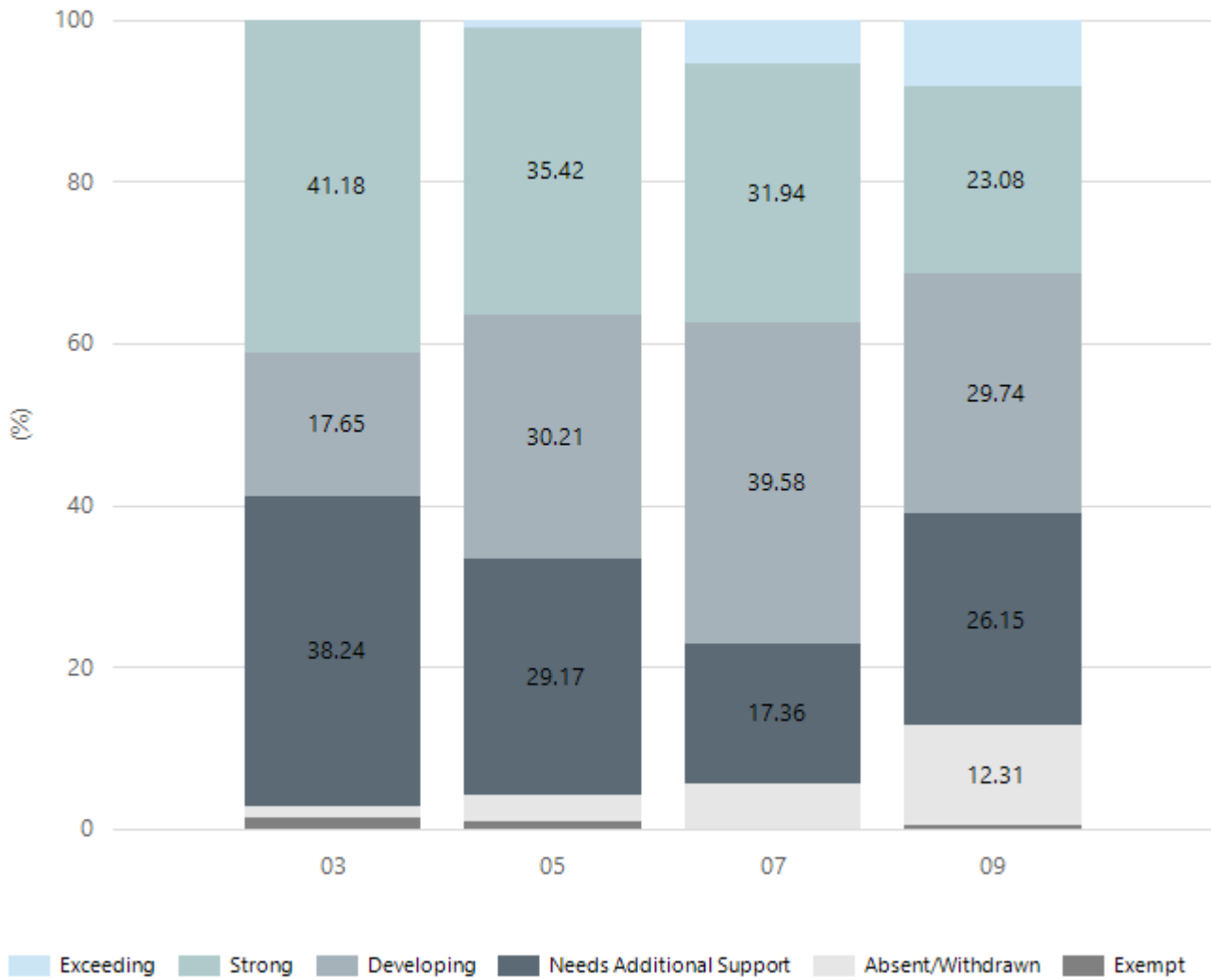
Reading



Year Level	03	05	07	09
Exceeding	2	3	9	4
Strong	22	37	42	57
Developing	21	32	48	53
Needs Additional Support	20	20	36	45
Absent/Withdrawn	2	3	8	35
Exempt	1	1	1	1
Total	68	96	144	195

Data Source: Department for Education Assessment Data Holdings, 2023. When there are less than six students in a cohort, no data is supplied.

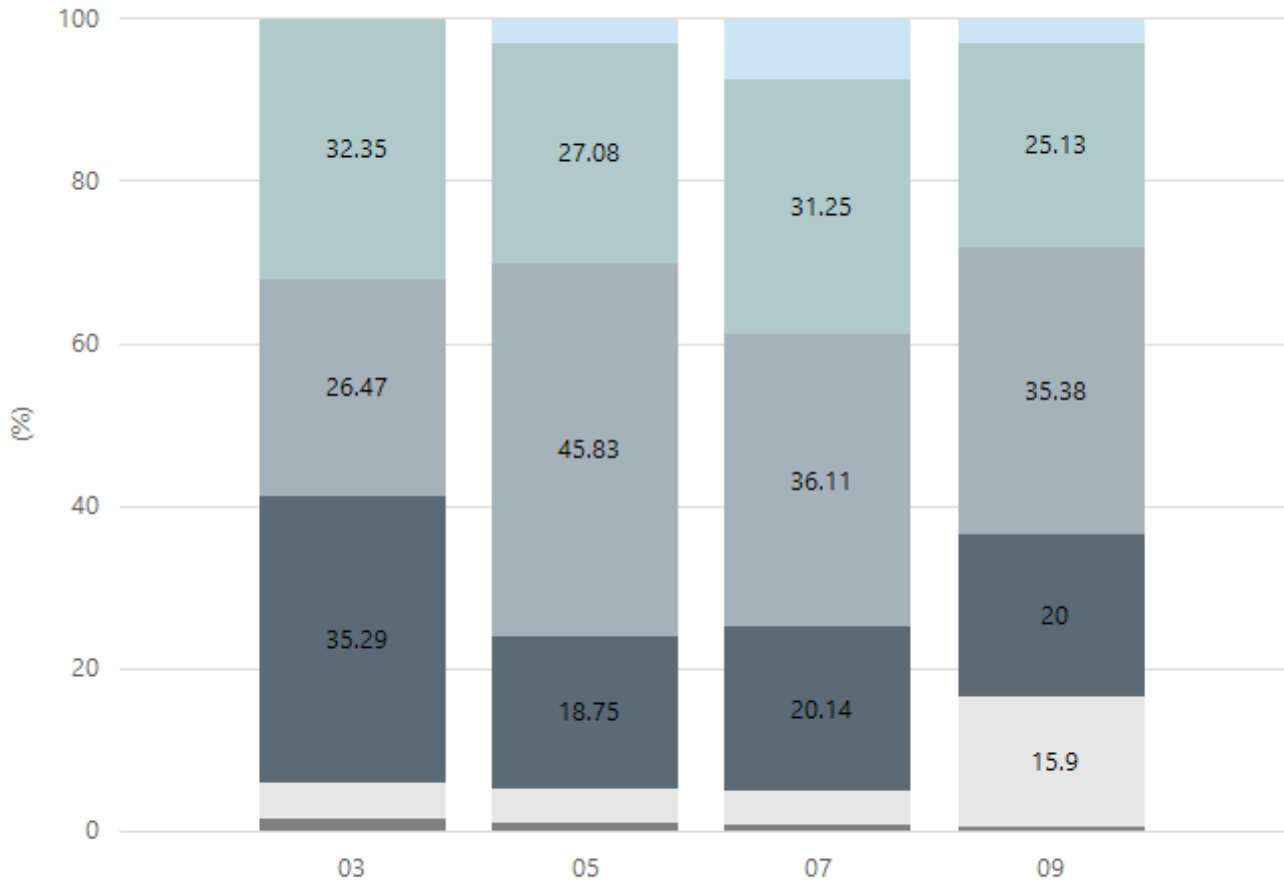
Writing



Year Level	03	05	07	09
Exceeding		1	8	16
Strong	28	34	46	45
Developing	12	29	57	58
Needs Additional Support	26	28	25	51
Absent/Withdrawn	1	3	8	24
Exempt	1	1		1
Total	68	96	144	195

Data Source: Department for Education Assessment Data Holdings, 2023. When there are less than six students in a cohort, no data is supplied.

Grammar

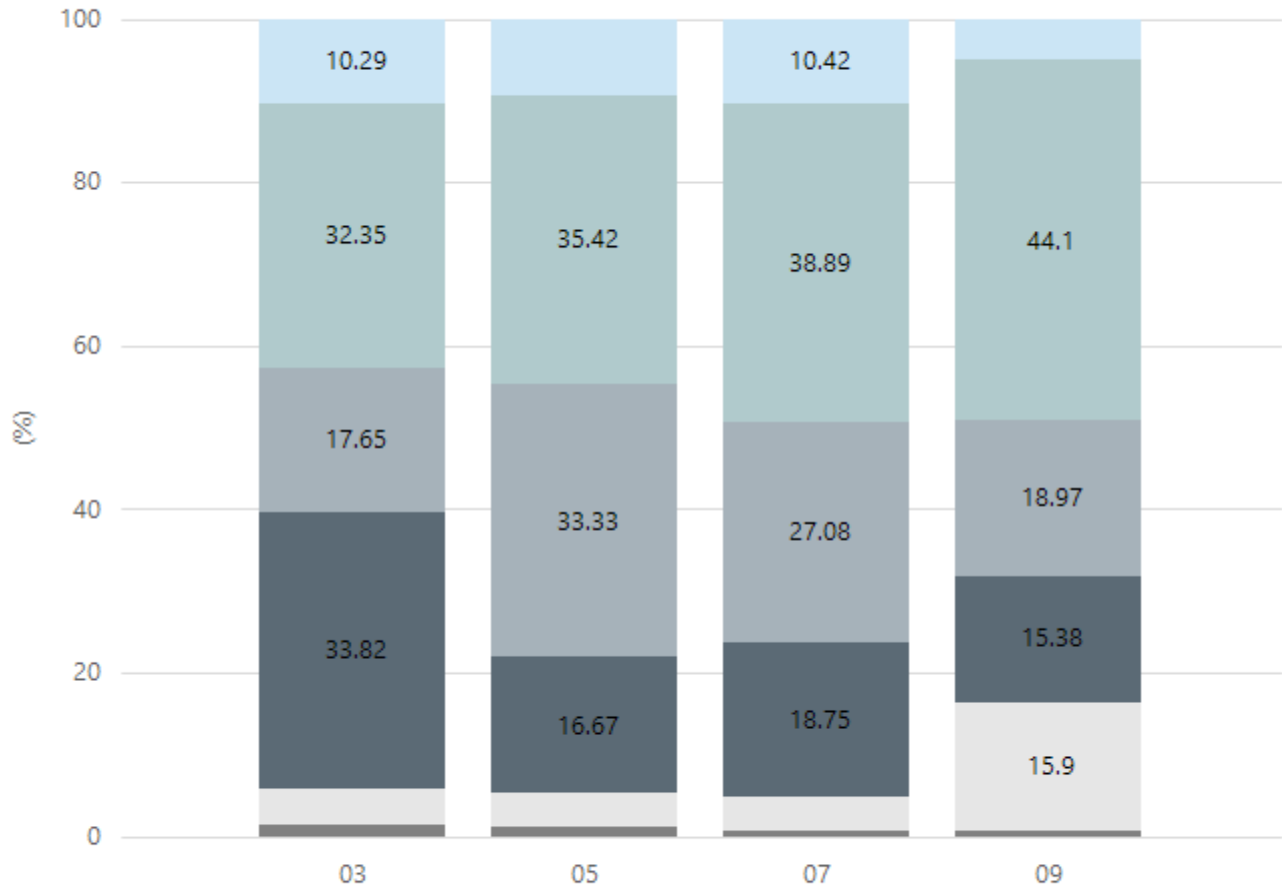


■ Exceeding
 ■ Strong
 ■ Developing
 ■ Needs Additional Support
 ■ Absent/Withdrawn
 ■ Exempt

Year Level	03	05	07	09
Exceeding		3	11	6
Strong	22	26	45	49
Developing	18	44	52	69
Needs Additional Support	24	18	29	39
Absent/Withdrawn	3	4	6	31
Exempt	1	1	1	1
Total	68	96	144	195

Data Source: Department for Education Assessment Data Holdings, 2023. When there are less than six students in a cohort, no data is supplied.

Spelling



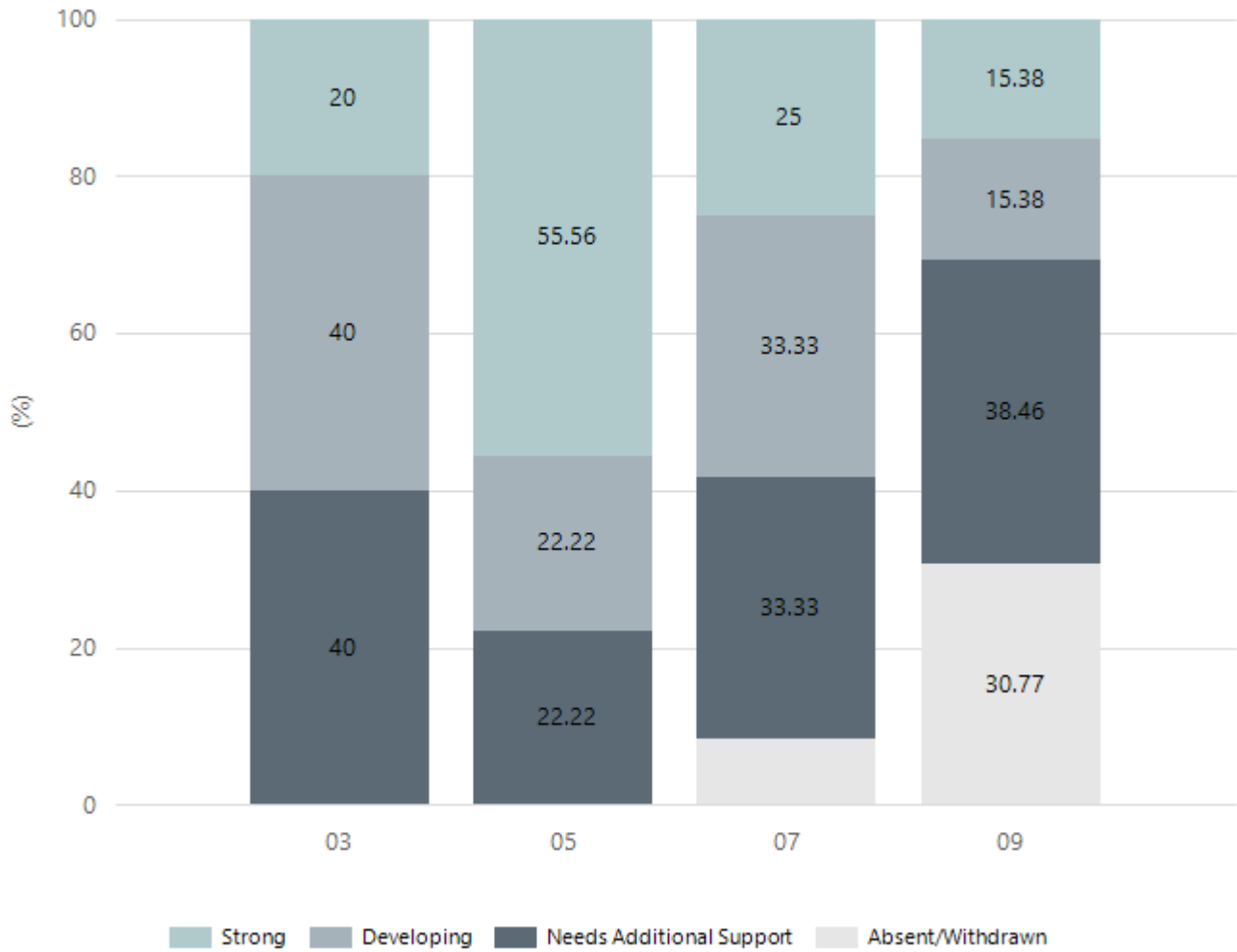
Exceeding Strong Developing Needs Additional Support Absent/Withdrawn Exempt

Year Level	03	05	07	09
Exceeding	7	9	15	10
Strong	22	34	56	86
Developing	12	32	39	37
Needs Additional Support	23	16	27	30
Absent/Withdrawn	3	4	6	31
Exempt	1	1	1	1
Total	68	96	144	195

Data Source: Department for Education Assessment Data Holdings, 2023. When there are less than six students in a cohort, no data is supplied.

NAPLAN Proficiency - Aboriginal Learners

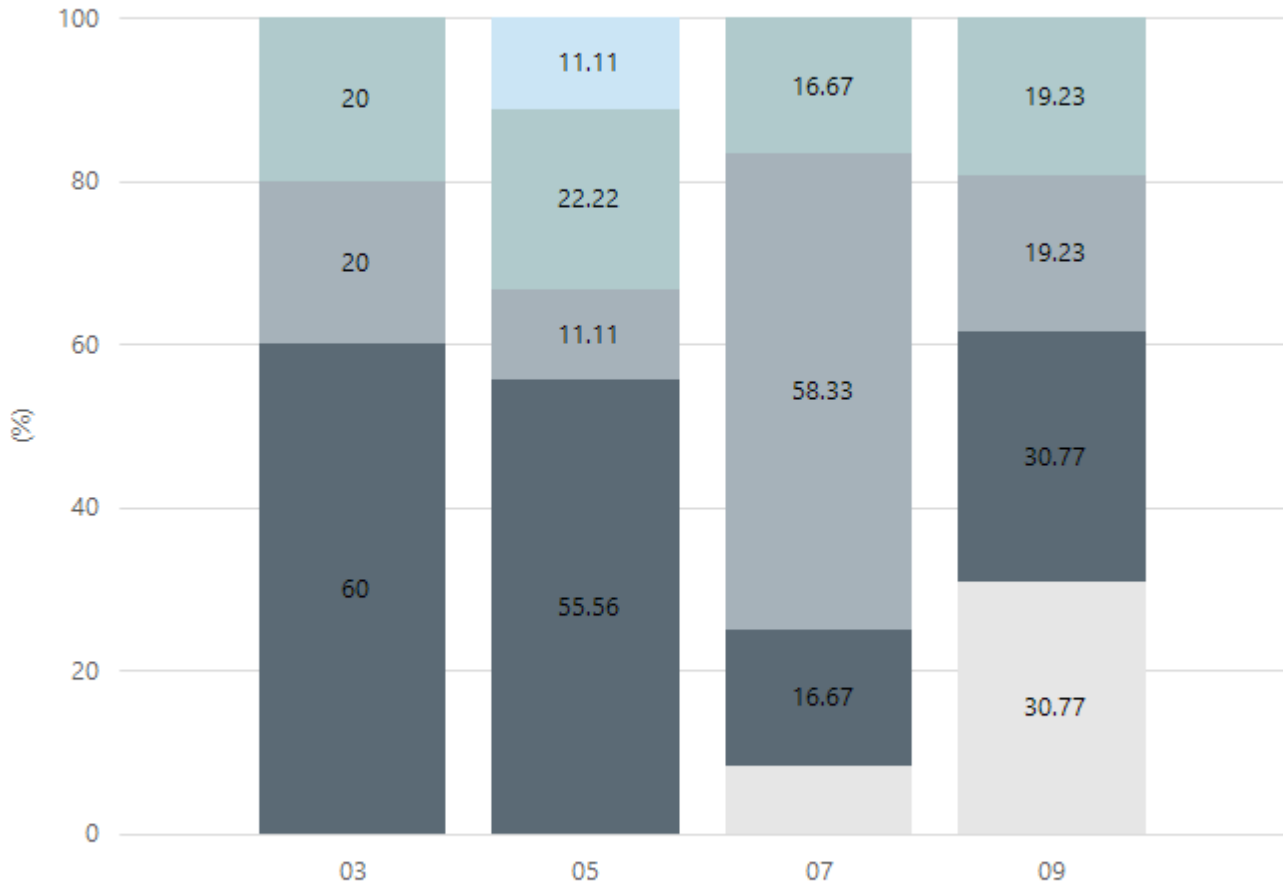
Numeracy



Year Level	03	05	07	09
Strong	1	5	3	4
Developing	2	2	4	4
Needs Additional Support	2	2	4	10
Absent/Withdrawn			1	8
Total	5	9	12	26

Data Source: Department for Education Assessment Data Holdings, 2023. When there are less than six students in a cohort, no data is supplied. Only data for Aboriginal learners is displayed.

Reading

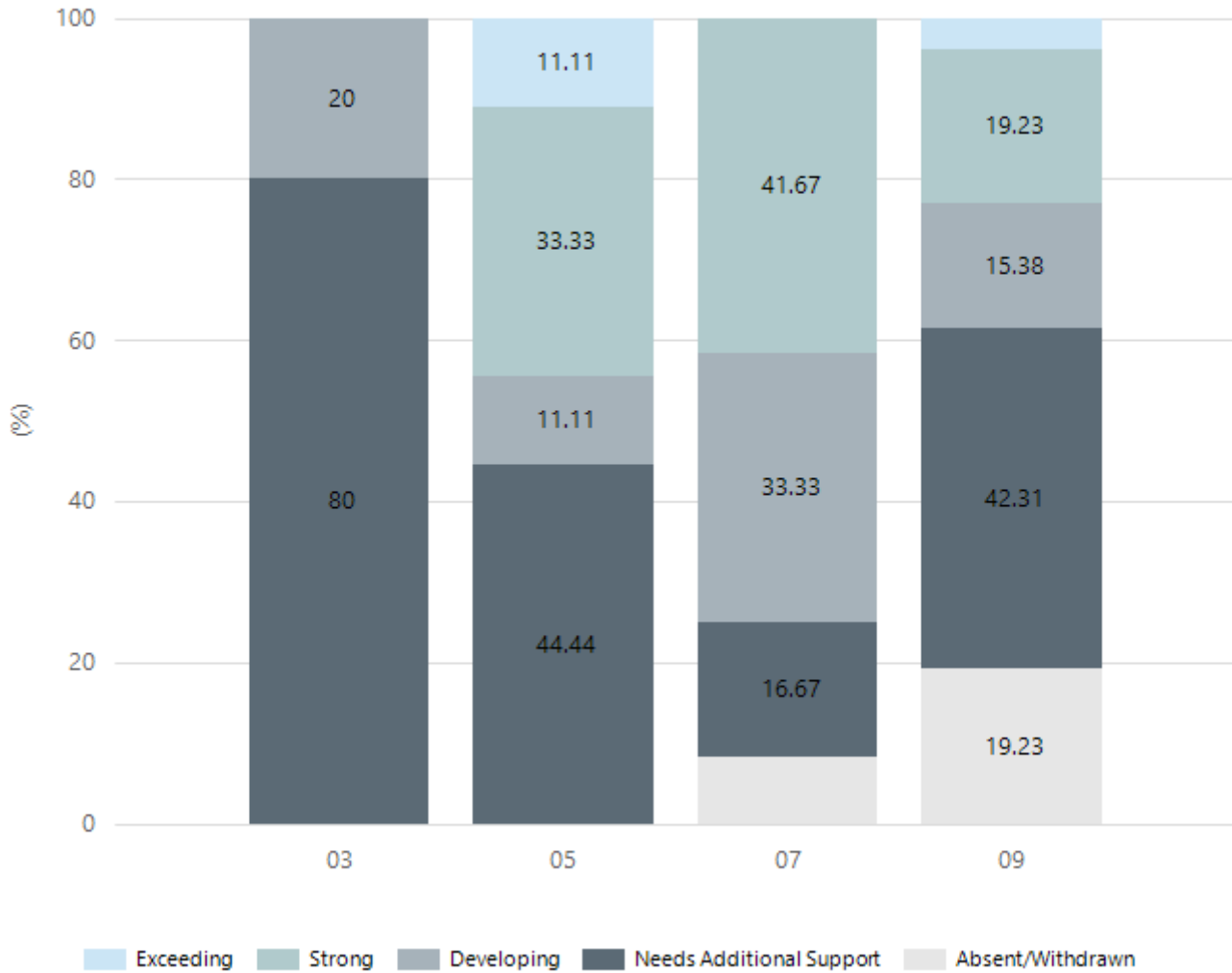


Exceeding Strong Developing Needs Additional Support Absent/Withdrawn

Year Level	03	05	07	09
Exceeding		1		
Strong	1	2	2	5
Developing	1	1	7	5
Needs Additional Support	3	5	2	8
Absent/Withdrawn			1	8
Total	5	9	12	26

Data Source: Department for Education Assessment Data Holdings, 2023. When there are less than six students in a cohort, no data is supplied. Only data for Aboriginal learners is displayed.

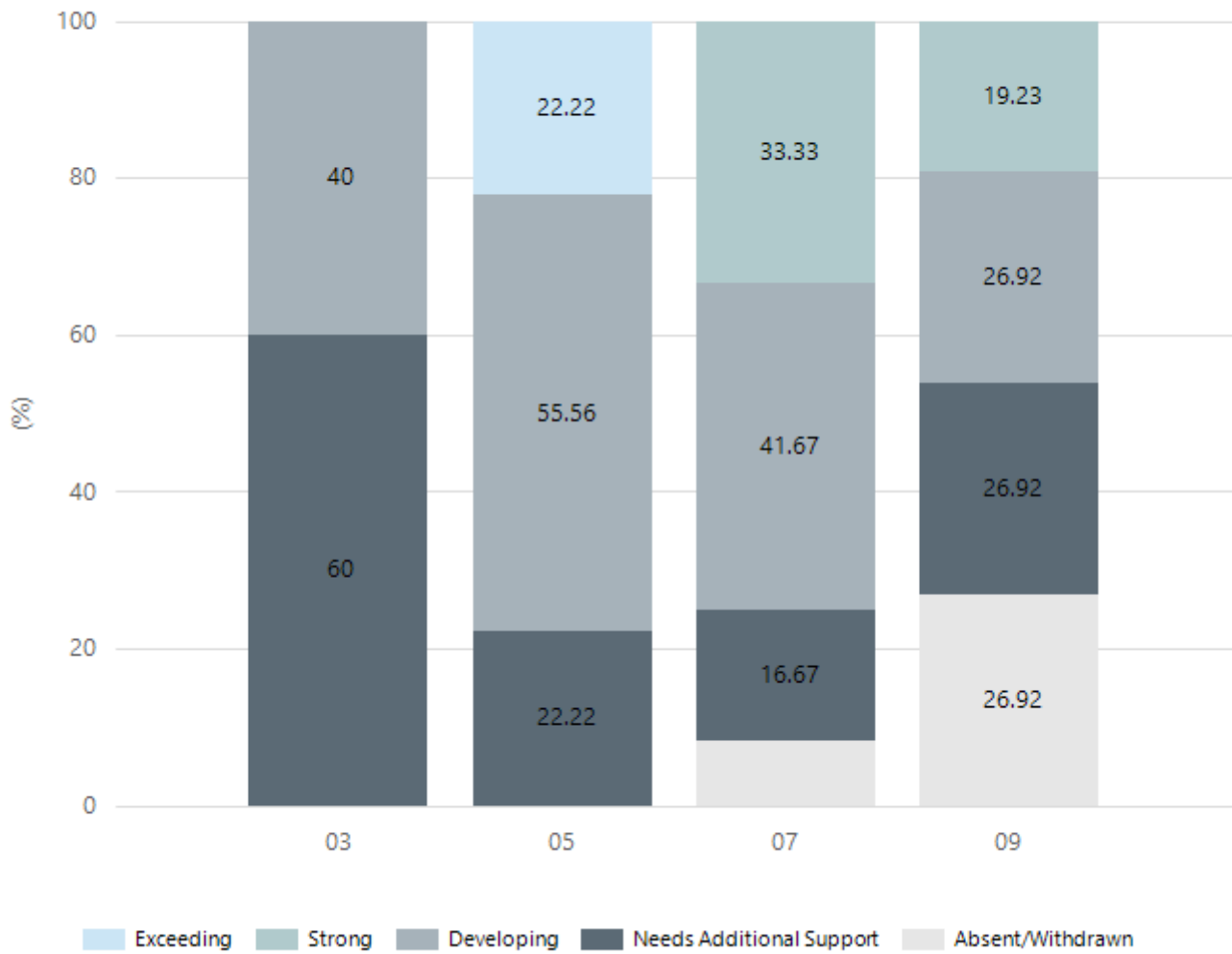
Writing



Year Level	03	05	07	09
Exceeding		1		1
Strong		3	5	5
Developing	1	1	4	4
Needs Additional Support	4	4	2	11
Absent/Withdrawn			1	5
Total	5	9	12	26

Data Source: Department for Education Assessment Data Holdings, 2023. When there are less than six students in a cohort, no data is supplied. Only data for Aboriginal learners is displayed.

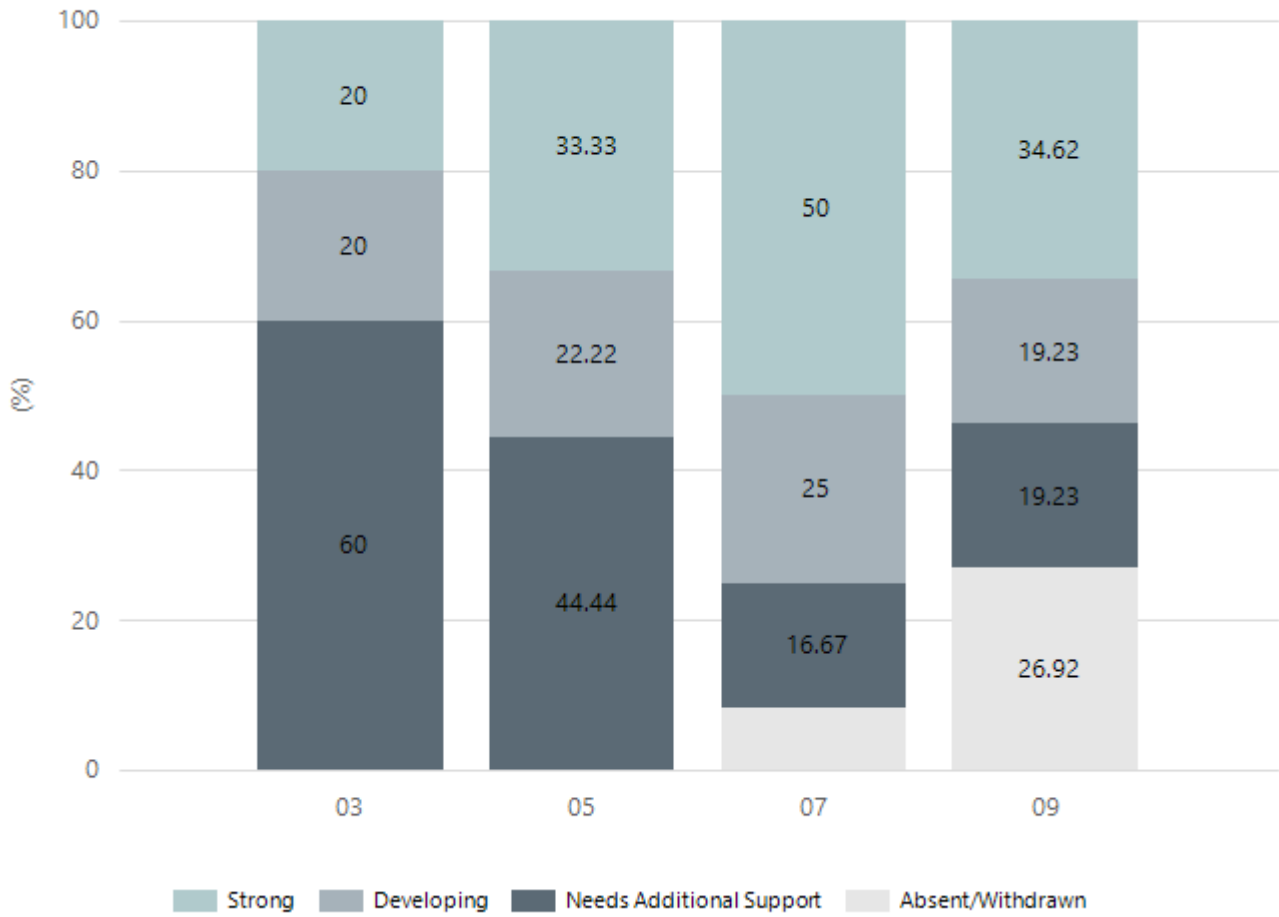
Grammar



Year Level	03	05	07	09
Exceeding		2		
Strong			4	5
Developing	2	5	5	7
Needs Additional Support	3	2	2	7
Absent/Withdrawn			1	7
Total	5	9	12	26

Data Source: Department for Education Assessment Data Holdings, 2023. When there are less than six students in a cohort, no data is supplied. Only data for Aboriginal learners is displayed.

Spelling



Year Level	03	05	07	09
Strong	1	3	6	9
Developing	1	2	3	5
Needs Additional Support	3	4	2	5
Absent/Withdrawn			1	7
Total	5	9	12	26

Data Source: Department for Education Assessment Data Holdings, 2023. When there are less than six students in a cohort, no data is supplied. Only data for Aboriginal learners is displayed.

South Australian Certificate of Education - SACE

SACE Stage 2 Grades - Percentage of grades that are C- or above for attempted SACE subjects (SEA)

2020	2021	2022	2023
97.51%	97.74%	97.79%	96.49%

Data Source: SACE School Data Reports, as of February 2023 for 2020-2022. 2023 SACE results are School supplied data. When there are less than six students, no data is supplied. Due to rounding of percentages, total results may not add up to 100%.

SACE Stage 2 Grade Distribution

Grade	2020	2021	2022	2023
A+	0.23%	0.75%	0.24%	0.41%
A	2.26%	3.27%	2.68%	2.68%
A-	3.39%	6.53%	7.07%	6.60%
B+	5.88%	12.06%	11.71%	10.10%
B	14.71%	15.83%	10.73%	14.23%
B-	11.09%	15.33%	16.83%	16.08%
C+	14.48%	16.83%	19.02%	15.88%
C	37.78%	17.84%	19.02%	20.82%
C-	7.69%	9.30%	10.49%	9.69%
D+	0.90%	1.26%	0.49%	1.44%
D	0.45%	0.50%	0.24%	0.41%
D-	0.23%	0.25%	0.24%	0.41%
E+	0.23%	0.25%	0.49%	0.41%
E	0.23%	0%	0.49%	0.82%
E-	0.45%	0%	0.24%	0.00%

Data Source: SACE School Data Reports, as of February 2023 for 2020-2022. 2023 SACE results are School supplied data. When there are less than six students, no data is supplied. Due to rounding of percentages, total results may not add up to 100%.

SACE Completion - Percentage of completers out of those students who had the potential to complete their SACE in October that year

2020	2021	2022	2023
95%	100%	100%	100%

Data Source: SACE School Data Reports, as of February 2023 for 2020-2022. 2023 SACE results are School supplied data. When there are less than six students, no data is supplied. Due to rounding of percentages, total results may not add up to 100%.

Year 12 Students undertaking Vocational or Trade Training (VET)

	2021	2022	2023
Percentage of Year 12 students undertaking Vocational Training or Trade Training	71.72%	44.87%	29.81
Percentage of Year 12 students attaining a Year 12 certificate or equivalent VET qualification			

Data Source: School supplied data

School Attendance

Year Level	2021	2022	2023
Reception	88.4%	82.1%	80.2%
Year 01	87.3%	84.1%	80.0%
Year 02	88.4%	82.0%	86.7%
Year 03	90.1%	82.3%	85.2%
Year 04	89.1%	79.9%	83.2%
Year 05	88.8%	80.1%	85.9%
Year 06	86.9%	82.0%	86.3%
Year 07	87.2%	77.0%	84.7%
Year 08	86.2%	75.8%	80.2%
Year 09	84.3%	76.2%	79.0%
Year 10	81.6%	75.5%	79.0%
Year 11	84.6%	77.4%	81.3%
Year 12	80.8%	76.7%	68.5%
Primary Other	98.6%		
Total	87.3%	79.3%	81.6%

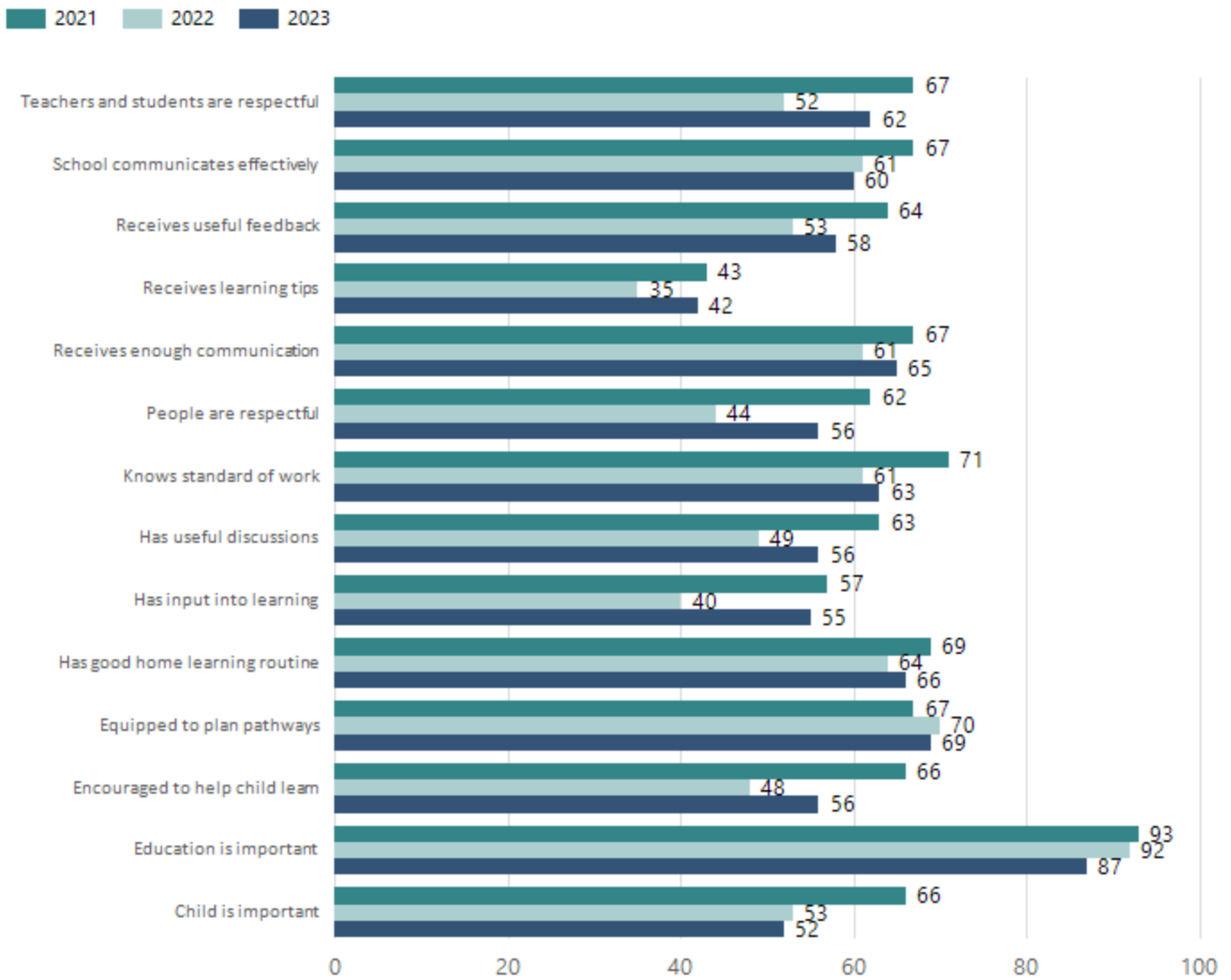
Data Source: Department for Education Attendance Data, Semester 1 Report 2023. A blank cell indicates there were no students enrolled. 'Primary Other' includes students enrolled in specialised education options. 'Secondary Other' includes students who have already spent a year at Year 12 and elected to undertake further study at Year 12.

Attendance Comment

In South Australia, all children and young people must be in school from 6 years to 16 years old. They must attend a government or non-government school full time. From age 16 to 17 however, young people must attend school or an approved learning program (such as an apprenticeship, traineeship, accredited course or university). Schools and parents must encourage and support students to come to school every day. Parents and caregivers must make sure their child is enrolled in a school, and attends school all day and everyday it is open, unless a child is sick or has an approved exemption. Teachers and leaders actively follow up when a student misses school, including recording all absences and non-attendance. All schools in South Australia have local attendance procedures governed under the Education and Children's Services Regulations 2020.

Parent Opinion Survey Results

Proportion of agree/strongly agree response(%)



Data Source: 2023 Department for Education Parent Opinions Survey, Term 3 2023.

Intended Destination

Leave Reason	Number	%
NG - ATTENDING NON-GOV SCHOOL IN SA	27	21.0%
OV - LEFT SA FOR OVERSEAS	5	4.0%
TG - TRANSFERRED TO SA GOVERNMENT SCHOOL	62	48.0%
U - UNKNOWN	33	25.0%

Data Source: Department for Education Destination Data Report, 2023. Data extract term 3 2023. Data shows recorded destinations for students that left the school in the previous year. Data is uploaded by schools in term 3 and may not reflect final or total figures at time of report creation.

Highest Qualifications held by the teaching workforce and workforce composition

All teachers at this school are qualified and registered with the SA Teachers Registration Board.

Qualification Level	Number of Qualifications
Bachelor's degrees or Diplomas	85
Postgraduate Qualifications	46

Data Source: Data extracted from Mandatory Workforce Information Collections as on the last pay date of June 2023. As self-reported by staff in the system.

Please note: Data includes staff who are Actively employed and on extended paid leave. Please note only the highest qualification of the Teaching staff is reported. Excludes any number of other certifications earned.

Workforce composition including indigenous staff

	Non-Teaching Staff		Teaching Staff	
	Indigenous	Non-Indigenous	Indigenous	Non-Indigenous
Full-Time Equivalents	5.6	48.1	2.0	118.0
Persons	7.0	68.0	2.0	129.0

Data Source: Data extracted from Mandatory Workforce Information Collection as on the last pay date of June 2023.

Please note: Data includes staff who are actively employed and on extended paid leave. "Indigenous category" is self-reported by staff in the system.

Financial Statement

Funding Source	Amount
Grants: State	\$22,309,063
Grants: Commonwealth	\$4,069
Parent Contributions	\$687,119
Fund Raising	\$15,769
Other	\$74,620

Data Source: School supplied data.

GC Chair report

Thank you to everyone in our community who has contributed to the many great outcomes and highlights of 2023. In particular, Wakakirri in Primary in Term 3, Y12 graduation replete with caps and gowns in December and the Arts based showcases throughout the year. These all indicated the talent and enthusiasm which lies within the Paralowie community. In addition, the continuing development of the Community Centre is helping parents to make connections with the school and with their childrens' learning. The opening of the Toy Library has also been a great success. Fundraising through the Parents and Friends has also been a highlight through the year. We have also discussed and developed approaches to support positive behaviours both in the classroom and the yard. The new mobile phone ban has seen greater student interaction in the yard and minimised disruption to classroom learning. We have worked hard to develop the R-12ness of our site. We have a unique opportunity here.

The opening of the Clontarf building occurred early in Term 2. This is supporting our Aboriginal boys in understanding identity and belonging. In 2024 we will also develop the STARS program for our Aboriginal girls. Thank you to my fellow Governing Council Members for your time and support this year. We have worked with a new leadership team and are excited to see how this develops in the support of learning. In 2023 we have instituted Principal's Tours which will continue in 2024 to highlight Paralowie's points of difference. These include the Lumination Lab, our Volleyball Academy, Year 7 learning areas, dedicated Wellbeing spaces for students.

Liz Goodwin