



Lonsdale Heights Primary School

2024 annual report to the Community

Lonsdale Heights Primary School and Lonsdale Heights Preschool

Lonsdale Heights Primary School number: 1098

Lonsdale Heights Preschool number: 1595

Partnership: Beach Road



School principal:

Louisa Guest

Date of endorsement:

14/04/2025



Government
of South Australia
Department for Education

Context Statement

Lonsdale Heights Primary School caters for students from R-6. At the time of this report, the enrolment in 2024 is 74. Lonsdale Heights Primary School is classified as Category 2 on the Department for Education Index of Educational Disadvantage. At the time of this report, the school population includes 14% Aboriginal students, 36% students with disabilities, 7% children/young people in care. Further information about the school is available on the school's website (including its context statement), as well as the My School website.

Information about Lonsdale Heights Preschool is available on the centres website, as well as the Australian Childrens Education and Care Quality Authority (ACECQA) website.

Data Source: Department for Education data holdings from Mid census captured in AUGUST 2024.

Governing Council Report

I would like to begin by expressing my sincere gratitude to Lance Nesbit for his dedication and hard work toward the school and its students. We wish him a happy and fulfilling retirement. I would also like to extend my thanks to Louisa Guest for stepping in as our temporary principal. Her leadership has been greatly appreciated. The start of this year presented some challenges with a few staff members leaving, but we successfully onboarded several talented new staff members who have already proven to be invaluable assets to the school. Additionally, we are pleased with the newly refurbished roof, which has greatly improved the school's facilities.

We are also excited to welcome Andrea, the school's new business manager. She has done an outstanding job in stabilizing the school's finances, and we are confident that we are on track with our annual budget. The Governing Council looks forward to continuing its support of the school's learning objectives, recognizing the dynamic and ever-evolving nature of the educational environment.

We would like to express our sincere gratitude to all staff and leadership at Lonsdale Heights Primary School for their unwavering dedication and hard work. Their personal commitment to organizing and delivering events, such as camps and excursions, has been especially commendable during a year filled with uncertainty. We eagerly anticipate the continued growth and success of our students and look forward to the exciting opportunities that lie ahead for the school.

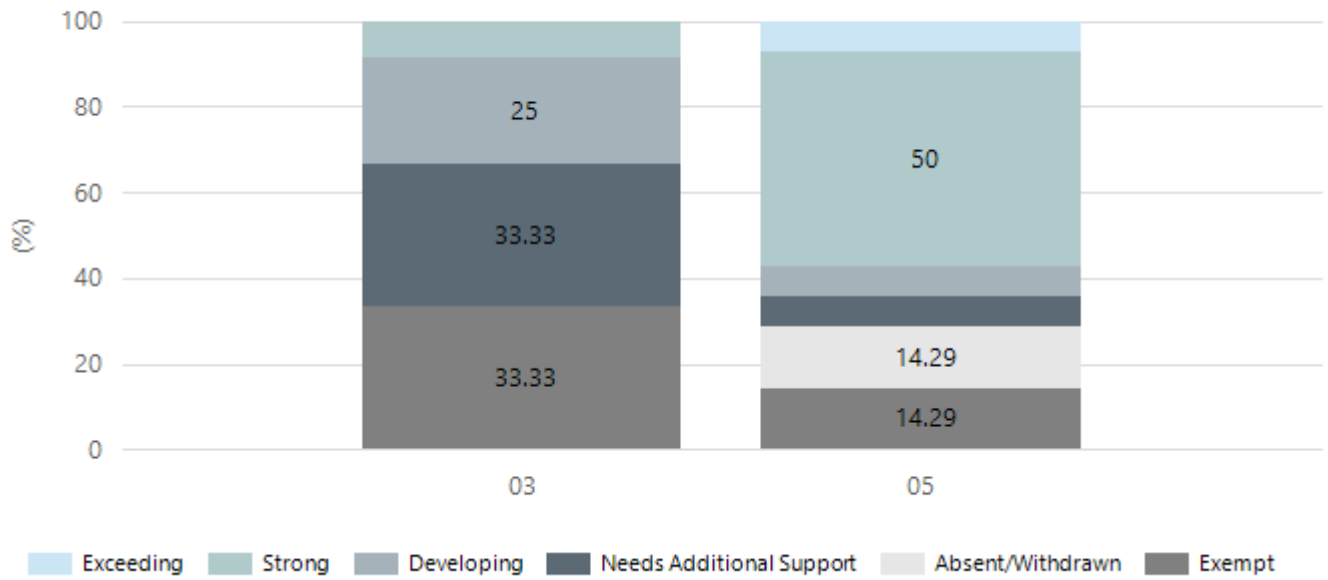
Matt Trezise, Chairperson

Performance Summary

NAPLAN Proficiency

In 2023 the Australian Curriculum, Assessment and Reporting Authority (ACARA) - a Commonwealth Independent statutory authority - announced changes to NAPLAN performance reporting. The new approach replaces the previous numerical NAPLAN bands and the national minimum standard.

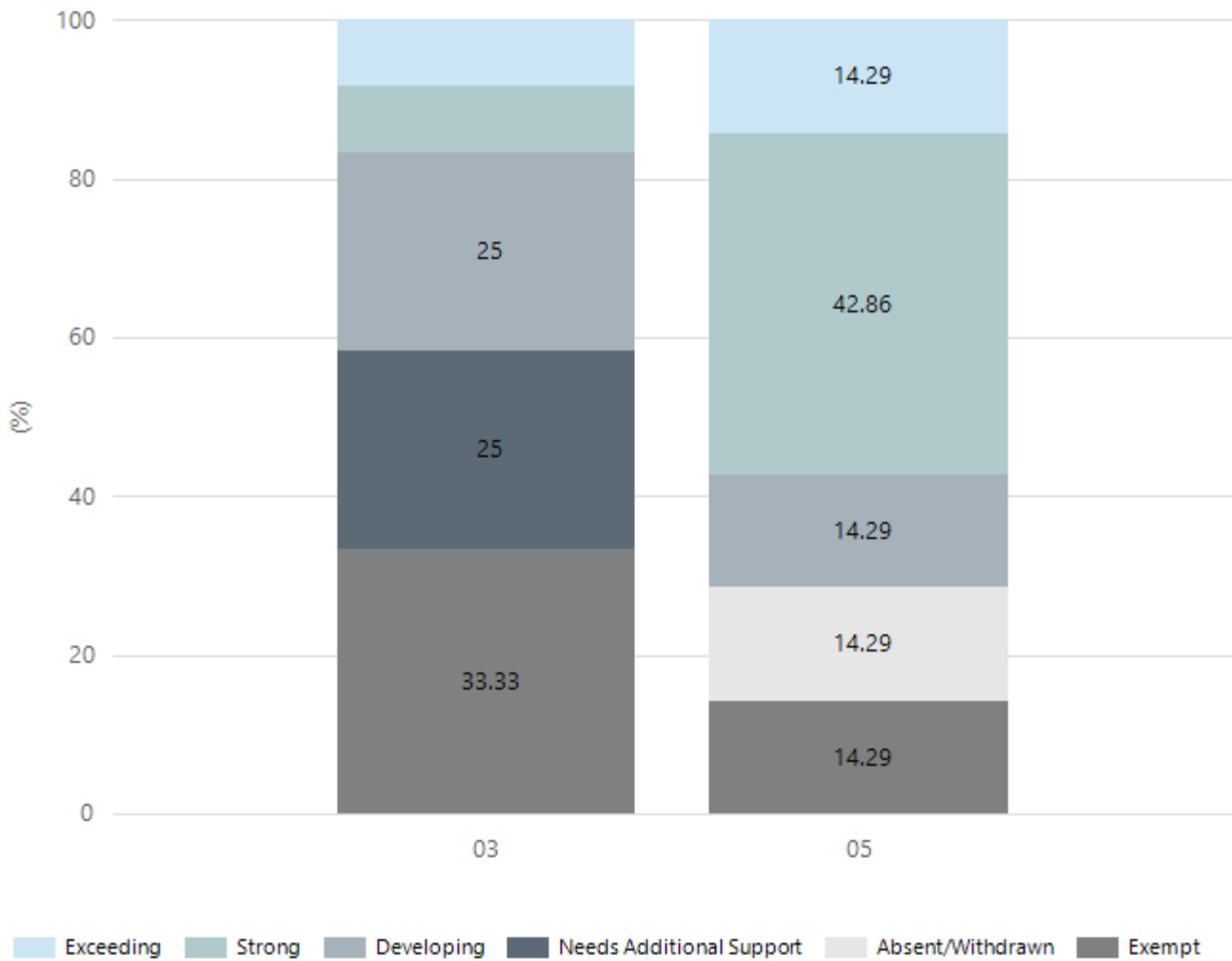
Numeracy



Year Level	03	05
Exceeding		1
Strong	1	7
Developing	3	1
Needs Additional Support	4	1
Absent/Withdrawn		2
Exempt	4	2
Total	12	14

Data Source: Department for Education Assessment Data Holdings, 2024. If there are less than 6 students who sat NAPLAN in a school, no information will be shown. If a year level has less than 6 students, that year level will not be shown in NAPLAN results.

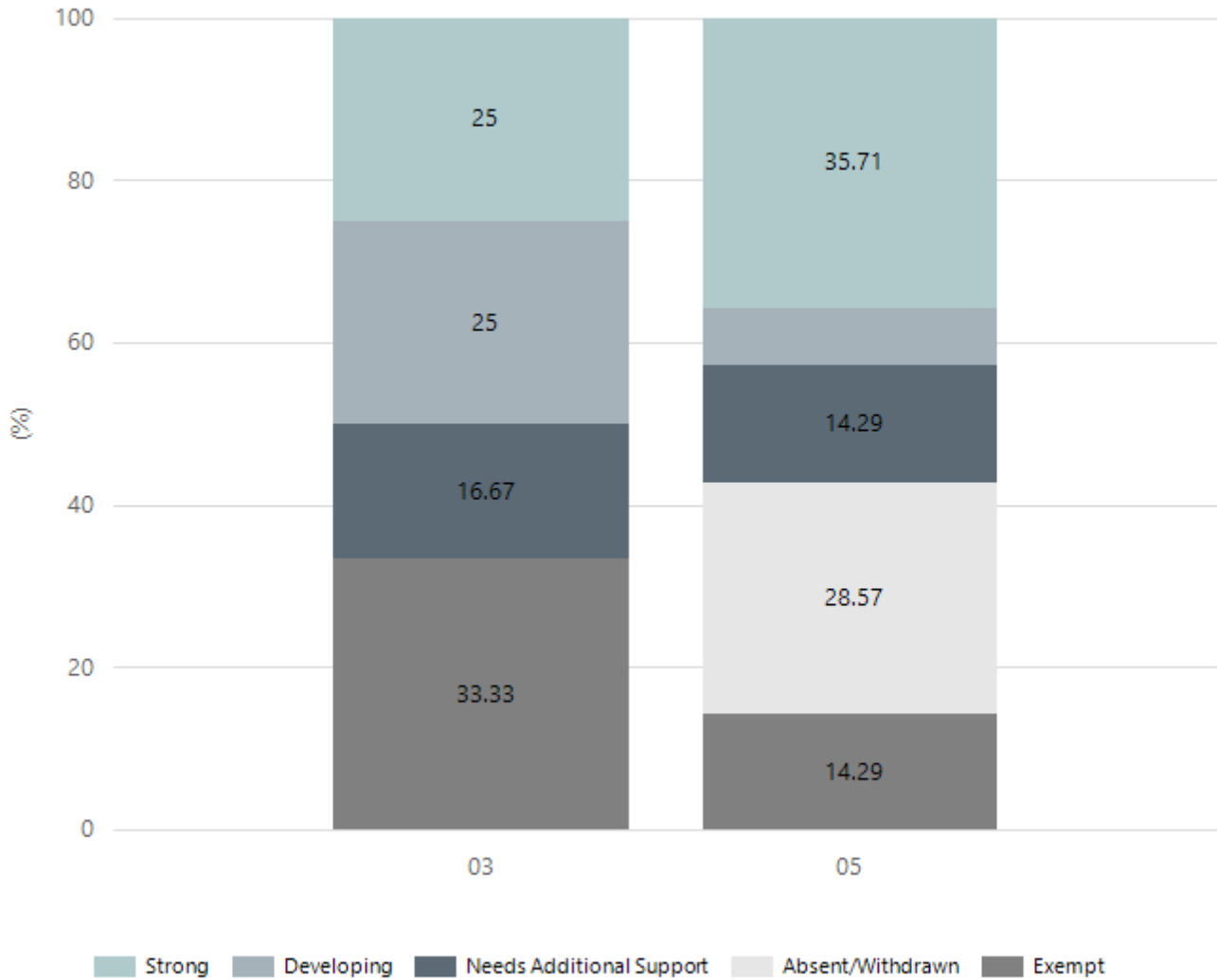
Reading



Year Level	03	05
Exceeding	1	2
Strong	1	6
Developing	3	2
Needs Additional Support	3	
Absent/Withdrawn		2
Exempt	4	2
Total	12	14

Data Source: Department for Education Assessment Data Holdings, 2024. If there are less than 6 students who sat NAPLAN in a school, no information will be shown. If a year level has less than 6 students, that year level will not be shown in NAPLAN results.

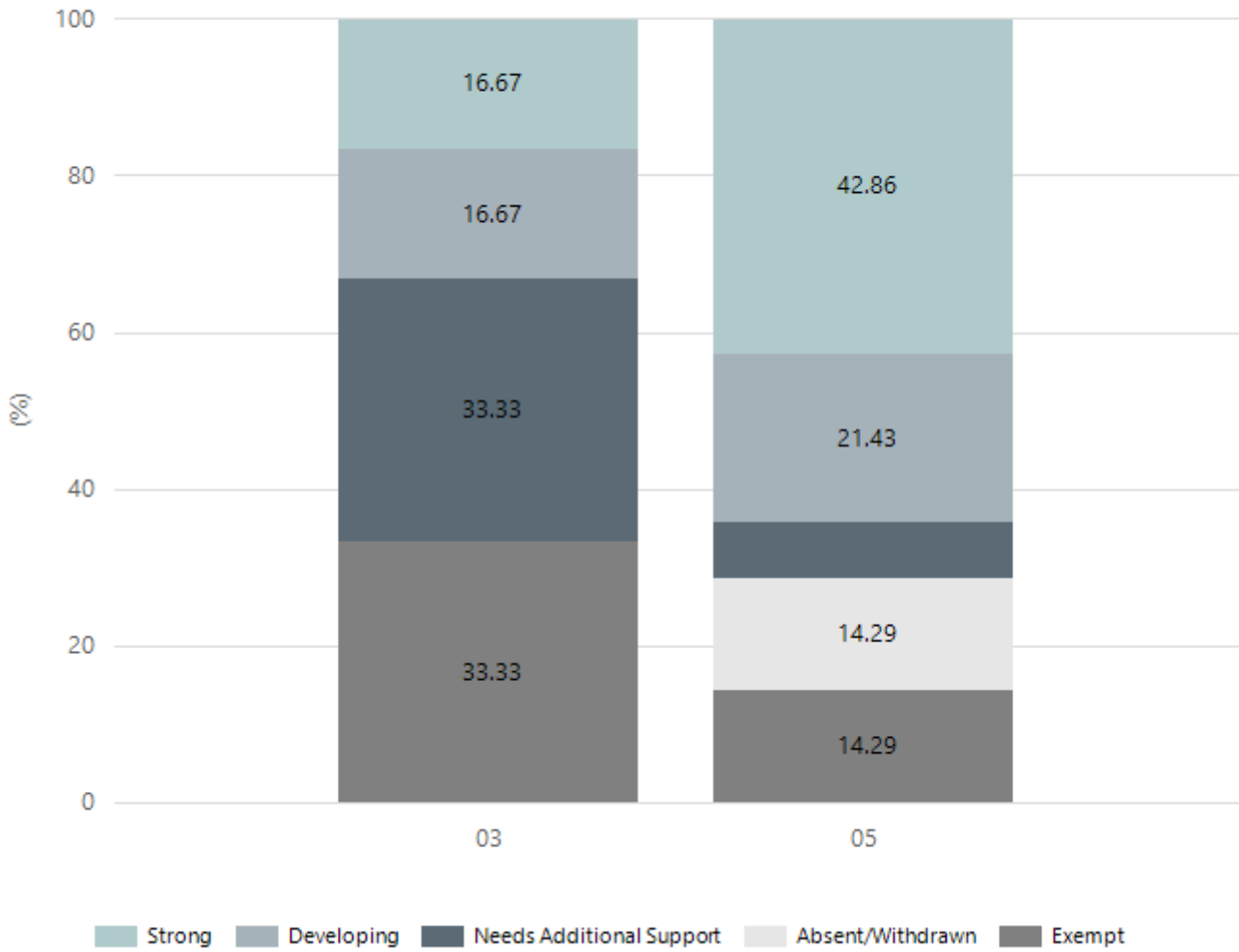
Writing



Year Level	03	05
Strong	3	5
Developing	3	1
Needs Additional Support	2	2
Absent/Withdrawn		4
Exempt	4	2
Total	12	14

Data Source: Department for Education Assessment Data Holdings, 2024. If there are less than 6 students who sat NAPLAN in a school, no information will be shown. If a year level has less than 6 students, that year level will not be shown in NAPLAN results.

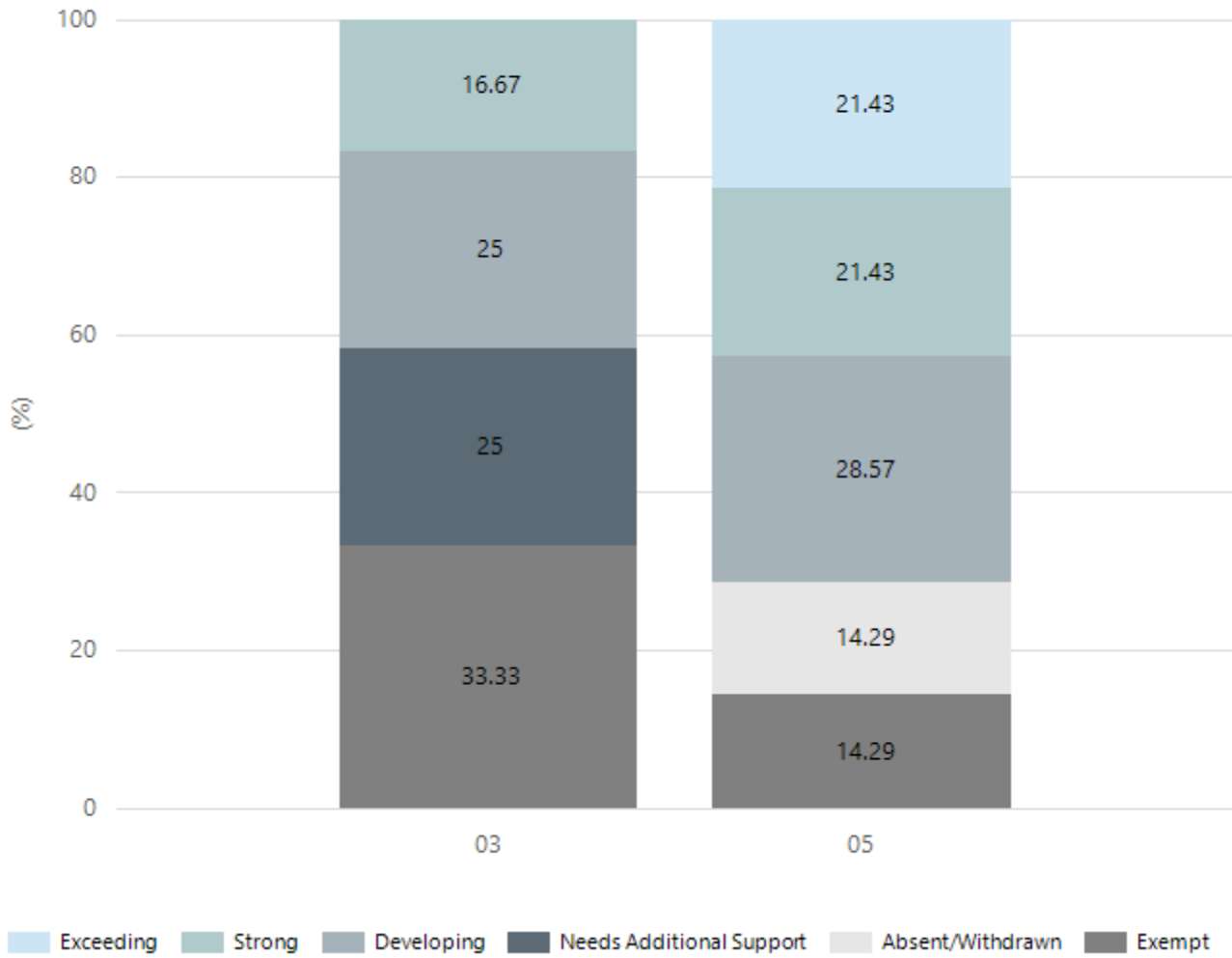
Grammar



Year Level	03	05
Strong	2	6
Developing	2	3
Needs Additional Support	4	1
Absent/Withdrawn		2
Exempt	4	2
Total	12	14

Data Source: Department for Education Assessment Data Holdings, 2024. If there are less than 6 students who sat NAPLAN in a school, no information will be shown. If a year level has less than 6 students, that year level will not be shown in NAPLAN results.

Spelling



Year Level	03	05
Exceeding		3
Strong	2	3
Developing	3	4
Needs Additional Support	3	
Absent/Withdrawn		2
Exempt	4	2
Total	12	14

Data Source: Department for Education Assessment Data Holdings, 2024. If there are less than 6 students who sat NAPLAN in a school, no information will be shown. If a year level has less than 6 students, that year level will not be shown in NAPLAN results.

Preschool Attendance

	Term 1	Term 2	Term 3	Term 4
2021 centre	100%	96.5%	80.6%	88.2%
2022 centre	85.7%	82.1%	73.5%	78.2%
2023 centre	89.2%	85.3%	80.1%	72.2%
2024 centre	100%		71.4%	

Based on attendances recorded in the two-week reference period each term. Data for eligible enrolments as described in the department's Enrolment policy. Attendance rates may differ to previous reporting with the transfer from calculations based on deemed attendance to actual attendance using booked hours divided by attended hours. Data Source: Department for Education Attendance Data, Semester 1 Report 2024. A blank cell indicates there we no students enrolled.

School Attendance

Year Level	2022	2023	2024
Reception	90.1%	84.3%	87.8%
Year 01	69.0%	94.2%	87.9%
Year 02	81.4%	82.7%	96.5%
Year 03	89.4%	87.4%	82.7%
Year 04	71.3%	85.2%	83.9%
Year 05	74.8%	84.9%	85.3%
Year 06	66.7%	75.7%	84.0%
Primary Other	73.7%	84.5%	75.4%
Total	76.5%	84.0%	84.5%

Data Source: Department for Education Attendance Data, Semester 1 Report 2024. A blank cell indicates there we no students enrolled. 'Primary Other' includes students enrolled in specialised education options. 'Secondary Other' includes students who have already spent a year at Year 12 and elected to undertake further study at Year 12.

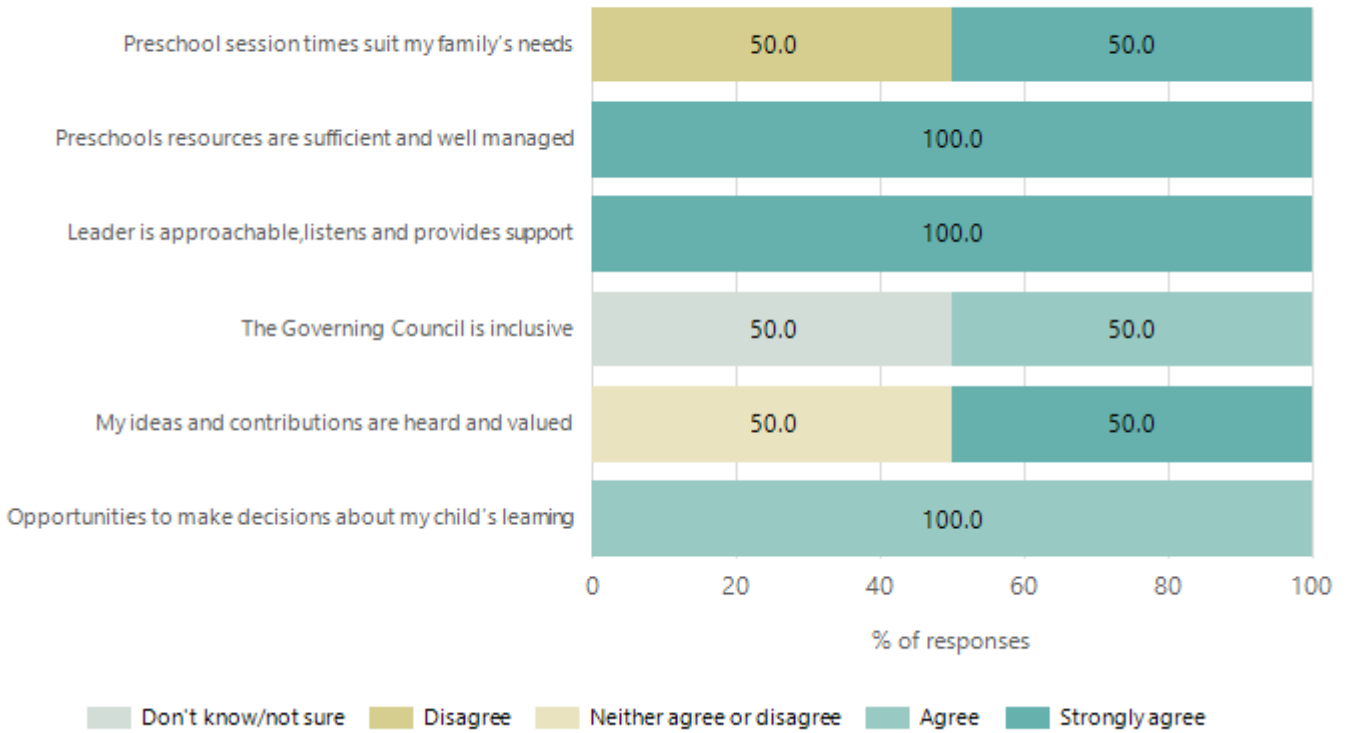
Attendance Comment

In South Australia, preschool attendance is not compulsory, but it is strongly encouraged. Preschool gives children the best opportunity to develop skills, which prepare them for school. These benefits include establishing positive routines and habits, friendships and connections as well as developing communication, problem-solving and creative skills. All children are entitled to access a preschool program over 4 terms the year before they start school.

In South Australia, all children and young people must be in school from 6 years to 16 years old. They must attend a government or non-government school full time. From age 16 to 17 however, young people must attend school or an approved learning program (such as an apprenticeship, traineeship, accredited course or university). Schools and parents must encourage and support students to come to school every day. Parents and caregivers must make sure their child is enrolled in a school, and attends school all day and everyday it is open, unless a child is sick or has an approved exemption. Teachers and leaders actively follow up when a student misses school, including recording all absences and non-attendance. All schools in South Australia have local attendance procedures governed under the Education and Children's Services Regulations 2020.

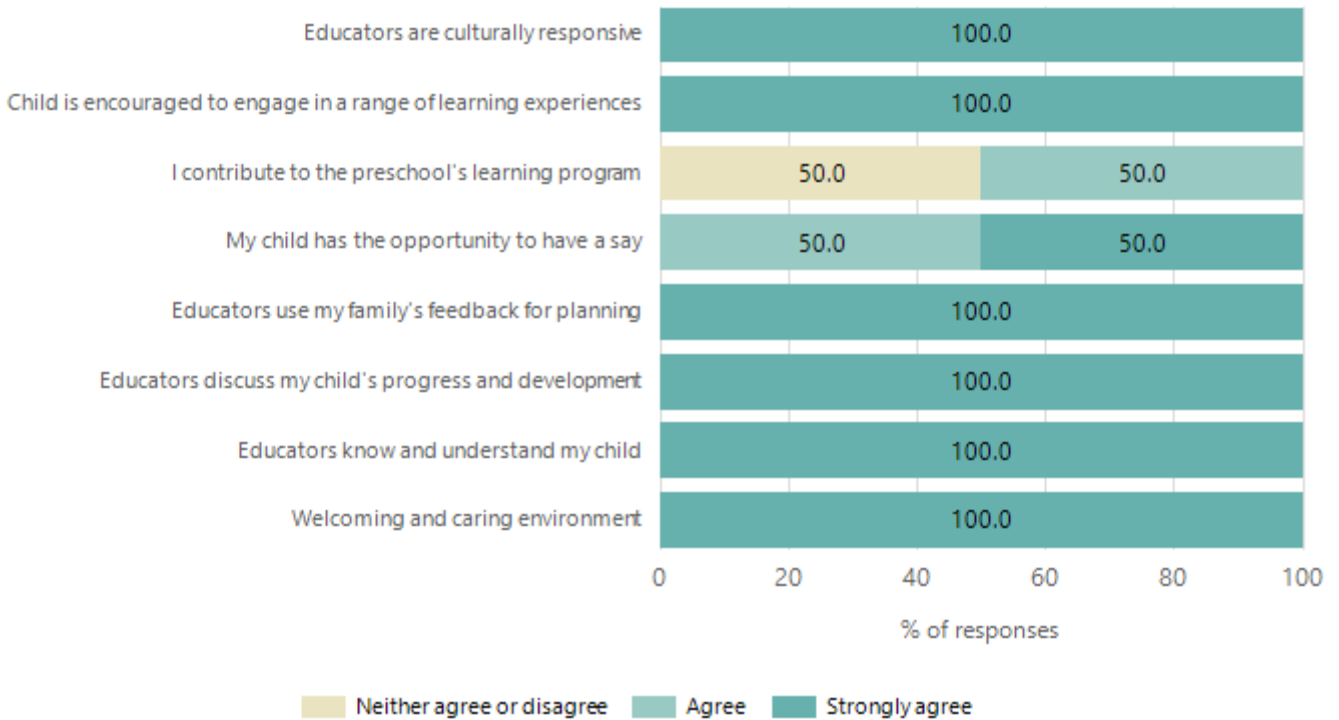
Preschool Family Opinion Survey

Governance, Leadership and Management



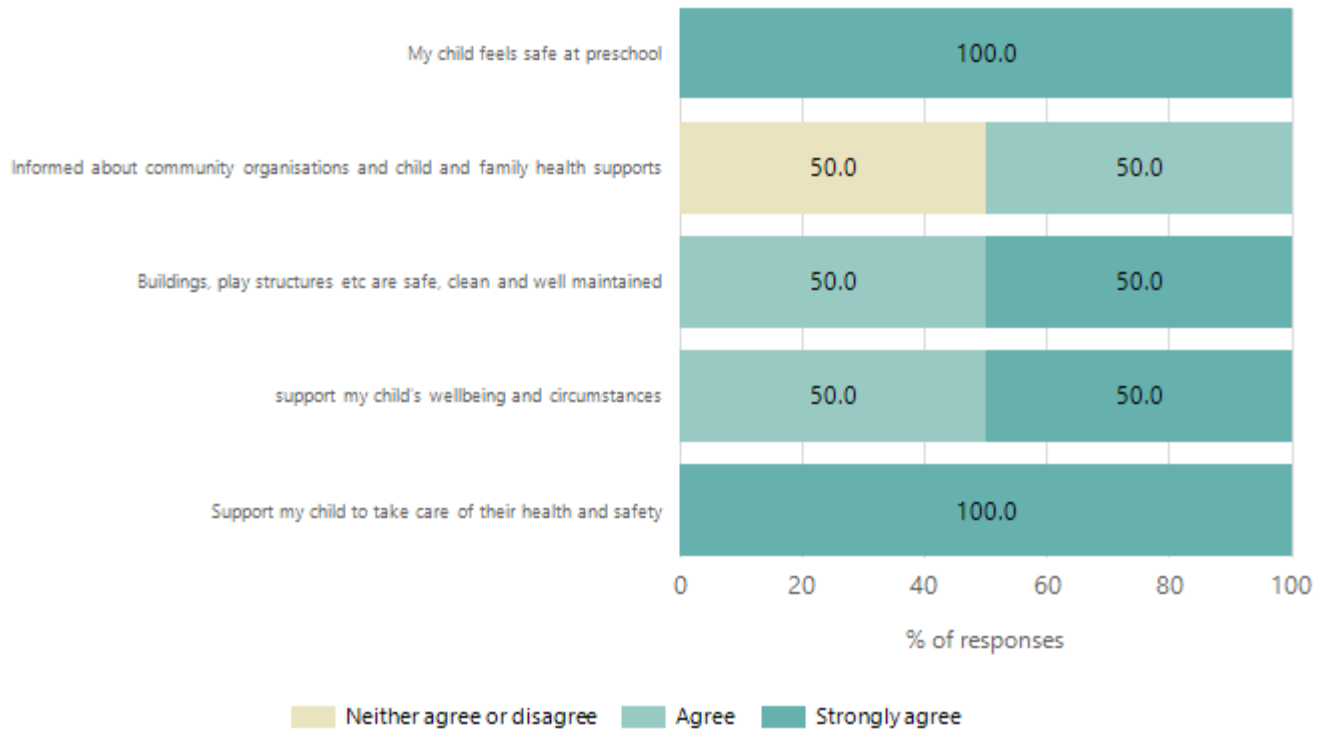
Data Source: 2024 Department for Education Preschool Family Opinions Survey, Term 3 2024.

Quality of Teaching and Learning



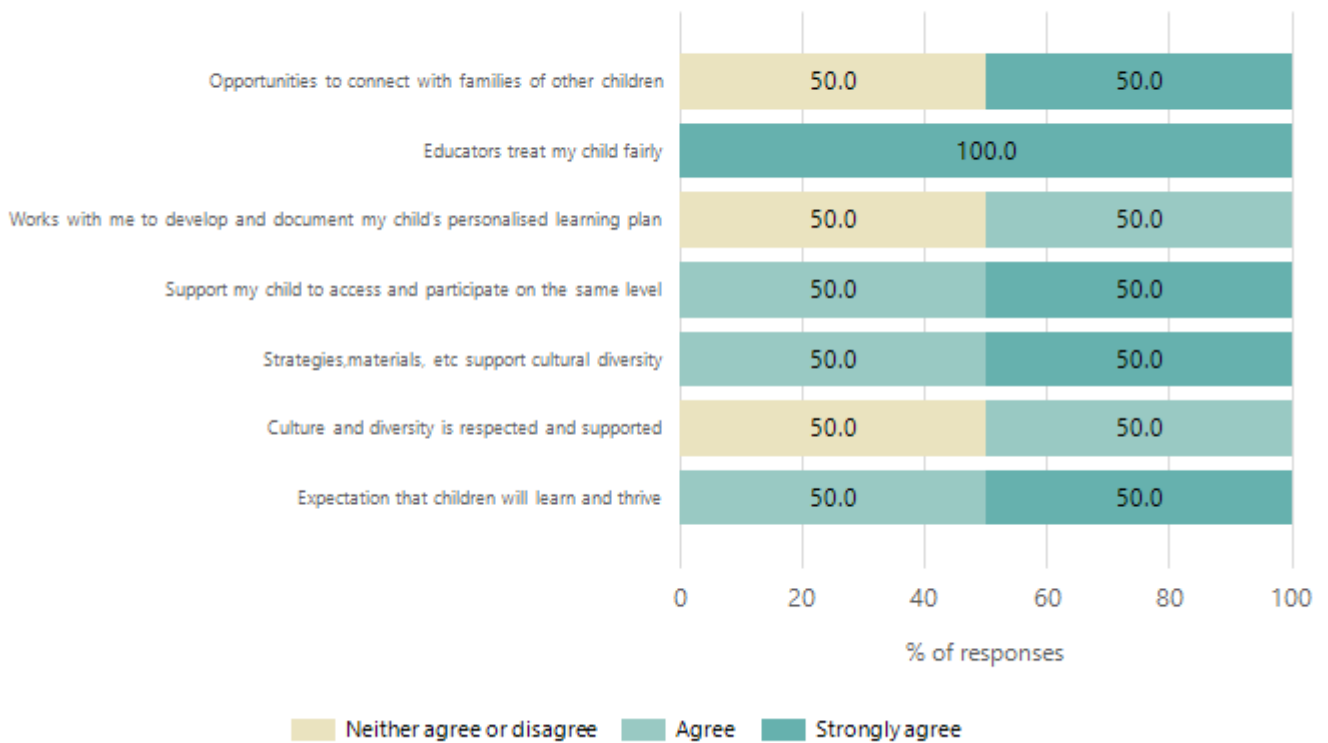
Data Source: 2024 Department for Education Preschool Family Opinions Survey, Term 3 2024.

Safety, Health and Wellbeing



Data Source: 2024 Department for Education Preschool Family Opinions Survey, Term 3 2024.

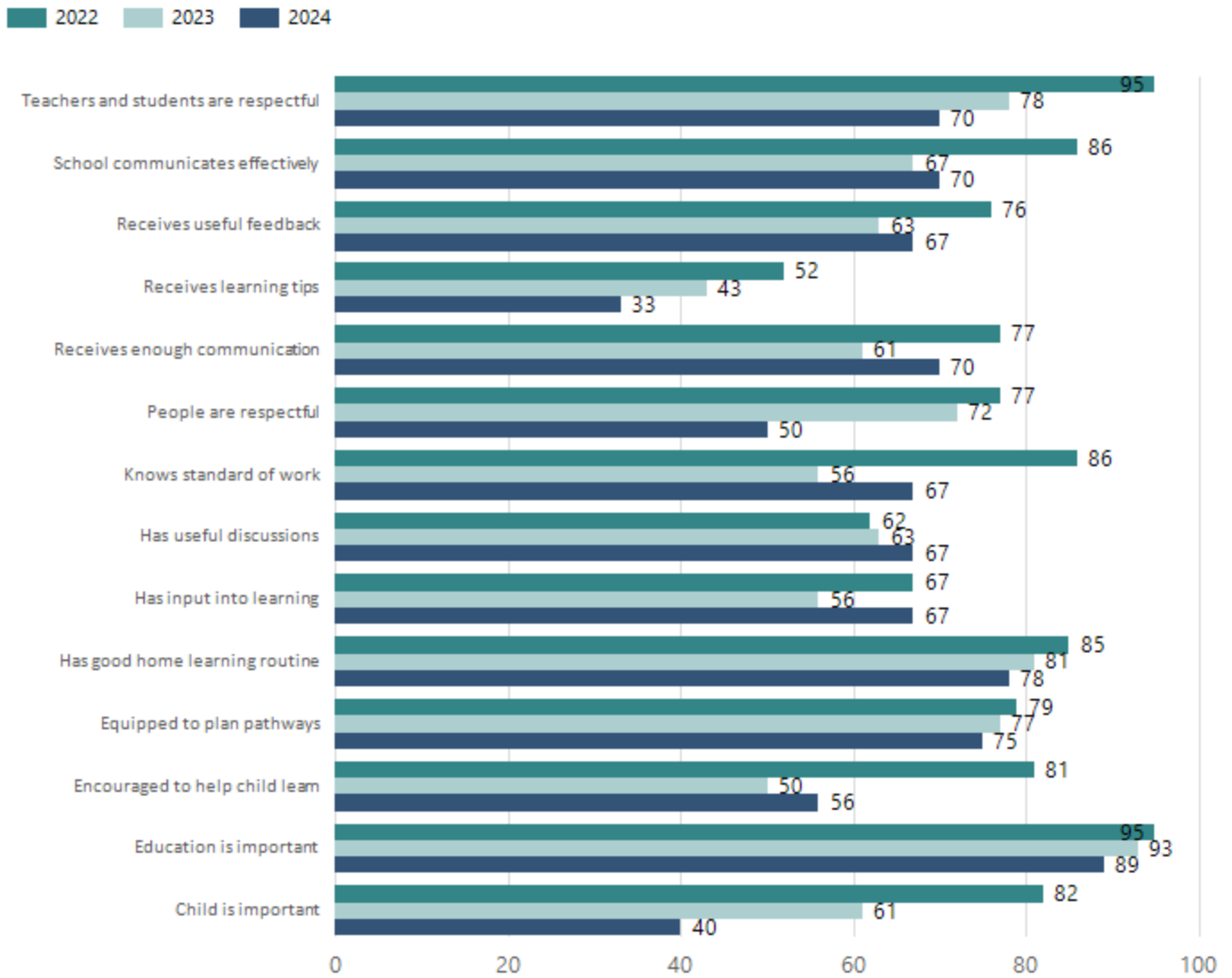
Support and Inclusion



Data Source: 2024 Department for Education Preschool Family Opinions Survey, Term 3 2024.

School Parent Opinion Survey Results

Proportion of agree/strongly agree response(%)



Data Source: 2024 Department for Education Parent Opinions Survey, Term 3 2024.

Destination Schools

Feeder Schools (Site number - Name)	2022	2023	2024
0640 - Hallett Cove School	8.3%		
1068 - Noarlunga Downs Primary School	8.3%		11.1%
1098 - Lonsdale Heights Primary School	50.0%	93.3%	77.8%
9999 - Unknown	33.3%	6.7%	11.1%

Note: The data is collected in term 3. It does not reflect actual schools enrolled in by existing preschool children. A blank cell indicates there was no data for students enrolled.

Data Source: Department for Education Destination Data Report, 2024.

Intended Destination

Leave Reason	Number	%
NG - ATTENDING NON-GOV SCHOOL IN SA	1	8.0%
TG - TRANSFERRED TO SA GOVERNMENT SCHOOL	11	92.0%

Data Source: Department for Education Destination Data Report, 2024. Data extract term 3 2024. Data shows recorded destinations for students that left the school in the previous year. Data is uploaded by schools in term 3 and may not reflect final or total figures at time of report creation.

Highest Qualifications held by the teaching workforce and workforce composition

All teachers at this school are qualified and registered with the SA Teachers Registration Board.

Qualification Level	Number of Qualifications
Bachelor's degrees or Diplomas	9
Postgraduate Qualifications	3

Data Source: Data extracted from Mandatory Workforce Information Collections as on the last pay date of June 2024. As self-reported by staff in the system.

Please note: Data includes staff who are Actively employed and on extended paid leave. Please note only the highest qualification of the Teaching staff is reported. Excludes any number of other certifications earned.

Workforce composition including indigenous staff

	Non-Teaching Staff		Teaching Staff	
	Indigenous	Non-Indigenous	Indigenous	Non-Indigenous
Full-Time Equivalents	0.0	5.4	0.6	9.6
Persons	0.0	11.0	1.0	11.0

Data Source: Data extracted from Mandatory Workforce Information Collection as on the last pay date of June 2024.

Please note: Data includes staff who are actively employed and on extended paid leave. "Indigenous category" is self-reported by staff in the system.

Financial Statement

Funding Source	Amount
Grants: State	\$1,780,578.17
Grants: Commonwealth	\$5,500
Parent Contributions	\$20,561
Fund Raising	\$3,755.89
Other	

Data Source: School supplied data.