

2024 annual report to the Community

Para Vista Primary School and Para Vista Preschool

Para Vista Primary School number: 1048

Para Vista Preschool number: 1609

Partnership: Montague



School principal:

Anita Becker


Signature

Date of endorsement:

02/03/2025



Context Statement

Para Vista Primary School caters for students from R-6. At the time of this report, the enrolment in 2024 is 203. Para Vista Primary School is classified as Category 4 on the Department for Education Index of Educational Disadvantage. At the time of this report, the school population includes 11% Aboriginal students, 18% students with disabilities, 14% students with English as an additional language (EALD) funded background, 2% children/young people in care. Further information about the school is available on the school's website (including its context statement), as well as the My School website.

Information about Para Vista Preschool is available on the centres website, as well as the Australian Childrens Education and Care Quality Authority (ACECQA) website.

Source: Department for Education data holdings from Mid census captured in AUGUST 2024.

Governing Council Report

Our year in 2024 continued to be busy with a lot of opportunities provided for our students. The school recognises students who demonstrate our core values of Respect, Honesty, and Courage by awarding the Values Awards at school assemblies to encourage positive behaviour. Swimming Week was held for Reception to Year 5 at Waterworld Ridgehaven and Aquatics for Year 6 at West Lakes. Staff also hosted Mother's and Father's Day breakfasts and with the help of staff and volunteers, we hosted gift stalls for both occasions, using fundraising money and donations from families for gifts.

Our school underwent several renovations including motorised large gates on Don Street, securing the bottom oval with a new fence, upgrading the Bell system, refurbishing the Vista toilets, seating and garden out the back of the school, and improving the canteen's kitchen sink. A new playground was also installed for our students.

We welcomed our first mid-year intake of Reception students, who settled in wonderfully and have become role models for future students.

Throughout the year, we celebrated many cultural activities including Harmony Day, Reconciliation Week, National Reconciliation Week, NAIDOC Week, Diwali and we also hosted our Book Week Parade a Crazy Hair and Crazy Sock Day.

We secured funding for a Pastoral Care Worker for the next three years, which is a fantastic addition to our school community.

Sadly, we bid farewell to our Community Hub Leader, who ran fantastic programs such as Playgroup, Sewing Classes, English Classes, and the Walking Chat and Coffee group, alongside a range of external programs for the community. We are hoping that this year we can fill this position and get these programs up and running again.

Our staff and students presented wonderful productions throughout the year, Alice in Wonderland and The End-of-Year Concert.

OSHC had another year of successful Vacation Care programs, with exciting excursions and incursions. Enrolments are high for both before/after school care and Vacation Care.

Canteen Managers continued making improvements to the canteen service and supported by volunteers, did an outstanding job keeping the canteen open, serving home-cooked meals, and keeping costs affordable for families. They created special offerings throughout the year, which were popular.

Our students participated in SAPSASA sports and performed at the Festival of Music. Twenty students graduated from our Children's University program after completing 30+ hours of extracurricular learning—congratulations to all graduates!

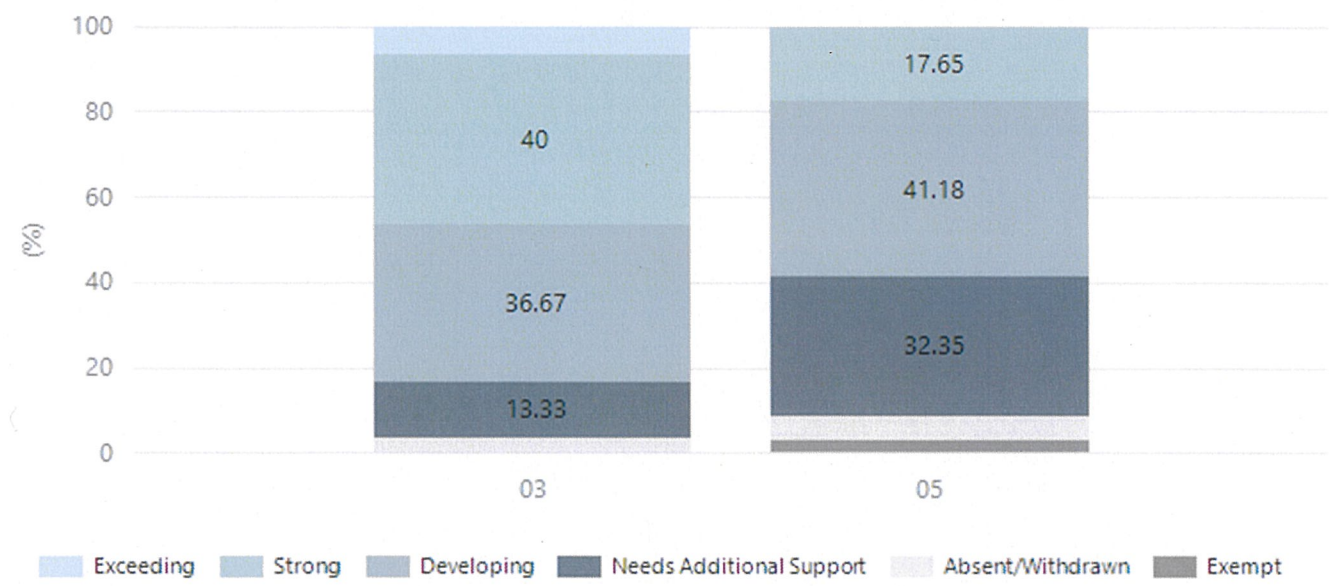
We also said goodbye to two long-standing volunteers and wish them the best in their future endeavours. Their dedication to the school and students will be missed. We look forward to welcoming passionate new members and volunteers for 2025!

Performance Summary

NAPLAN Proficiency

In 2023 the Australian Curriculum, Assessment and Reporting Authority (ACARA) - a Commonwealth Independent statutory authority - announced changes to NAPLAN performance reporting. The new approach replaces the previous numerical NAPLAN bands and the national minimum standard.

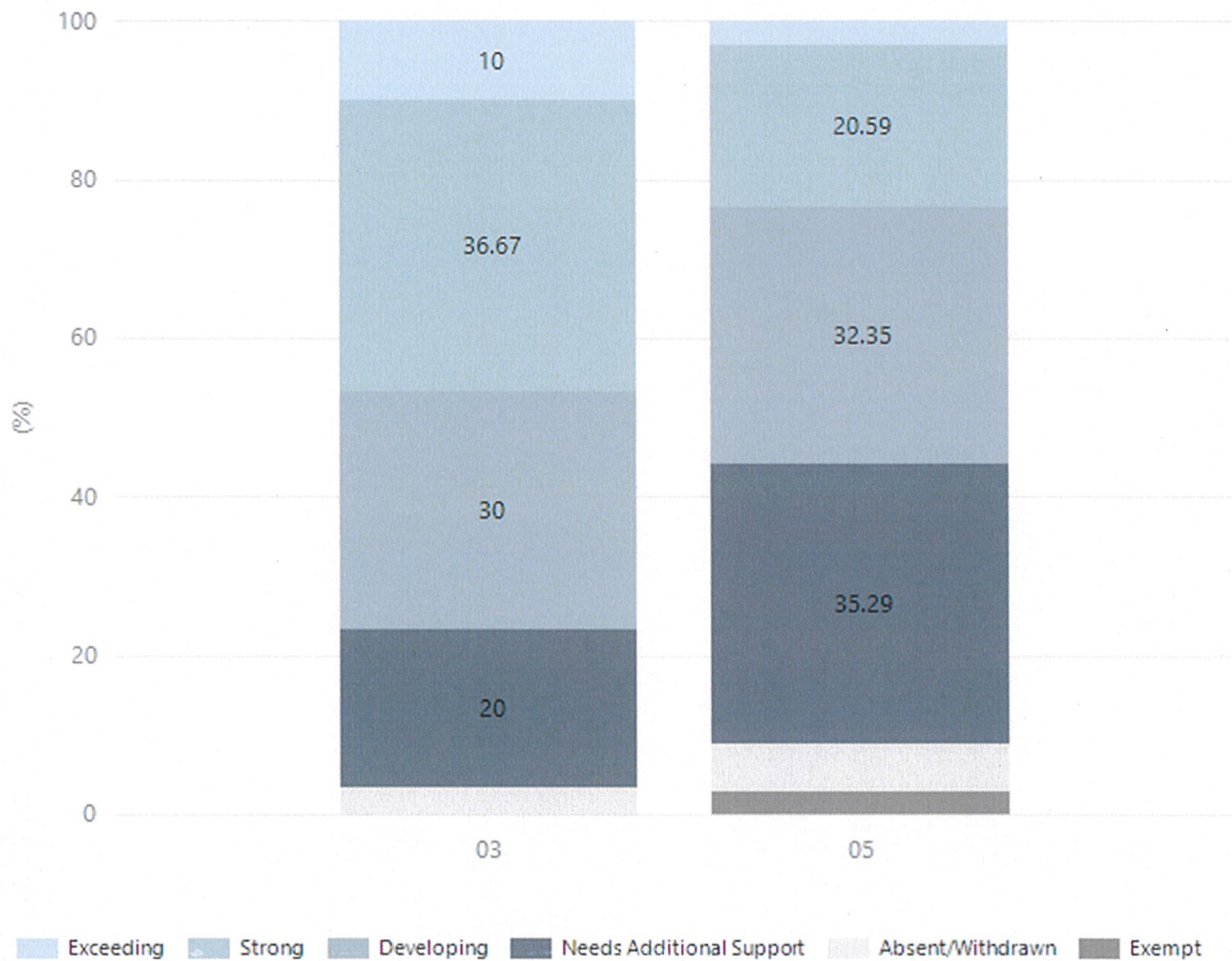
Numeracy



Year Level	03	05
Exceeding	2	
Strong	12	6
Developing	11	14
Needs Additional Support	4	11
Absent/Withdrawn	1	2
Exempt		1
Total	30	34

Data Source: Department for Education Assessment Data Holdings, 2024. If there are less than 6 students who sat NAPLAN in a school, no information will be shown. If a year level has less than 6 students, that year level will not be shown in NAPLAN results.

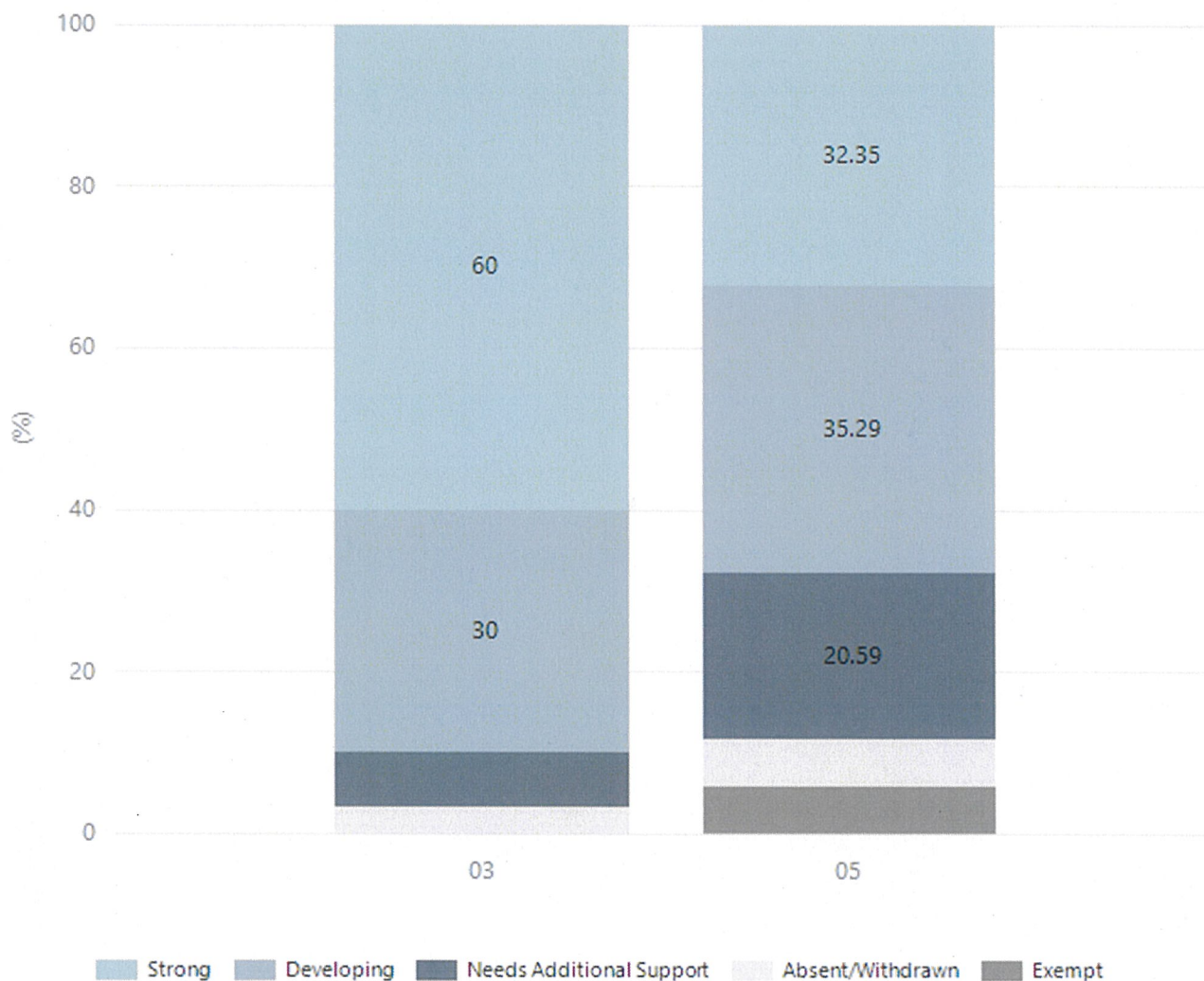
Reading



Year Level	03	05
Exceeding	3	1
Strong	11	7
Developing	9	11
Needs Additional Support	6	12
Absent/Withdrawn	1	2
Exempt		1
Total	30	34

Data Source: Department for Education Assessment Data Holdings, 2024. If there are less than 6 students who sat NAPLAN in a school, no information will be shown. If a year level has less than 6 students, that year level will not be shown in NAPLAN results.

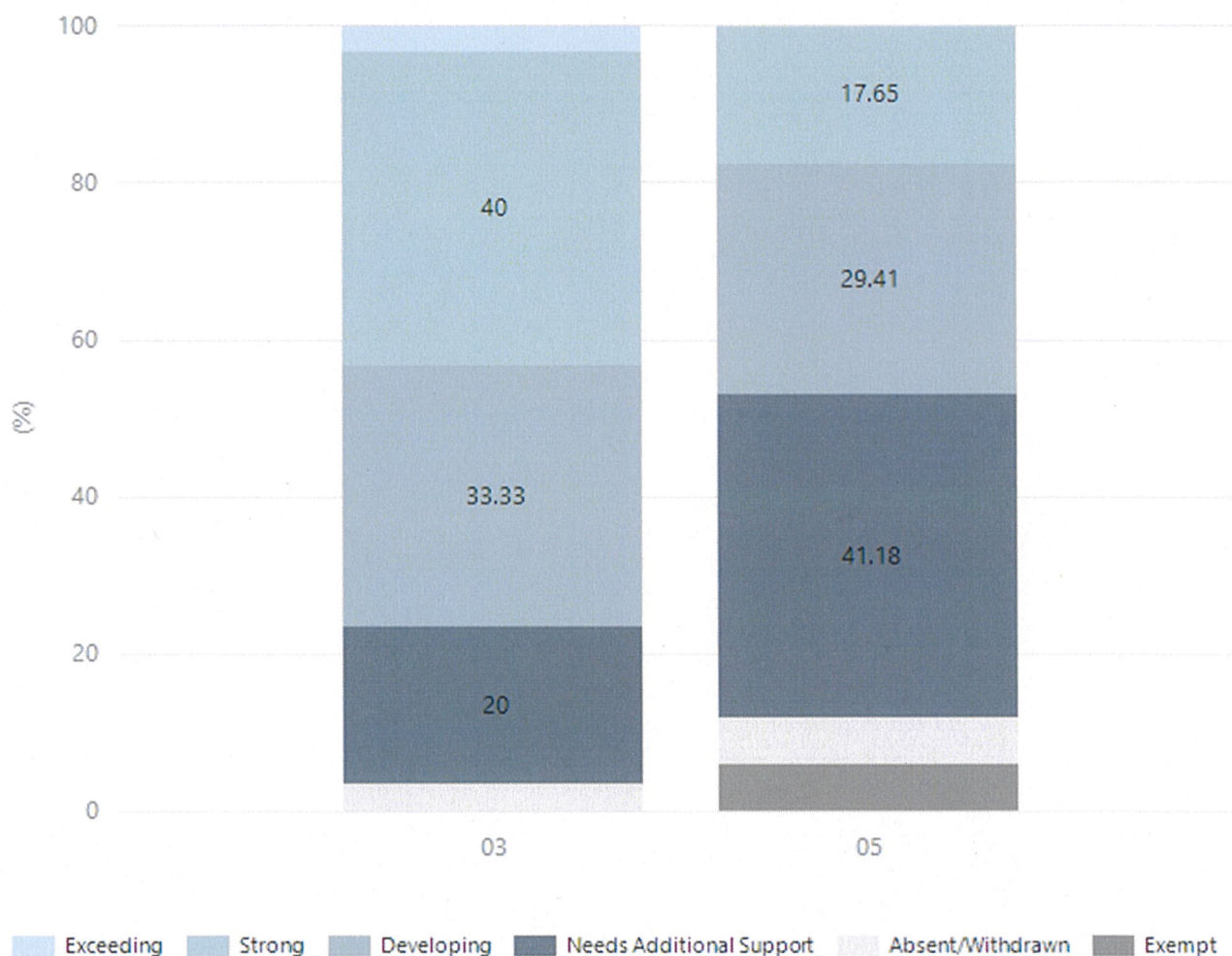
Writing



Year Level	03	05
Strong	18	11
Developing	9	12
Needs Additional Support	2	7
Absent/Withdrawn	1	2
Exempt		2
Total	30	34

Data Source: Department for Education Assessment Data Holdings, 2024. If there are less than 6 students who sat NAPLAN in a school, no information will be shown. If a year level has less than 6 students, that year level will not be shown in NAPLAN results.

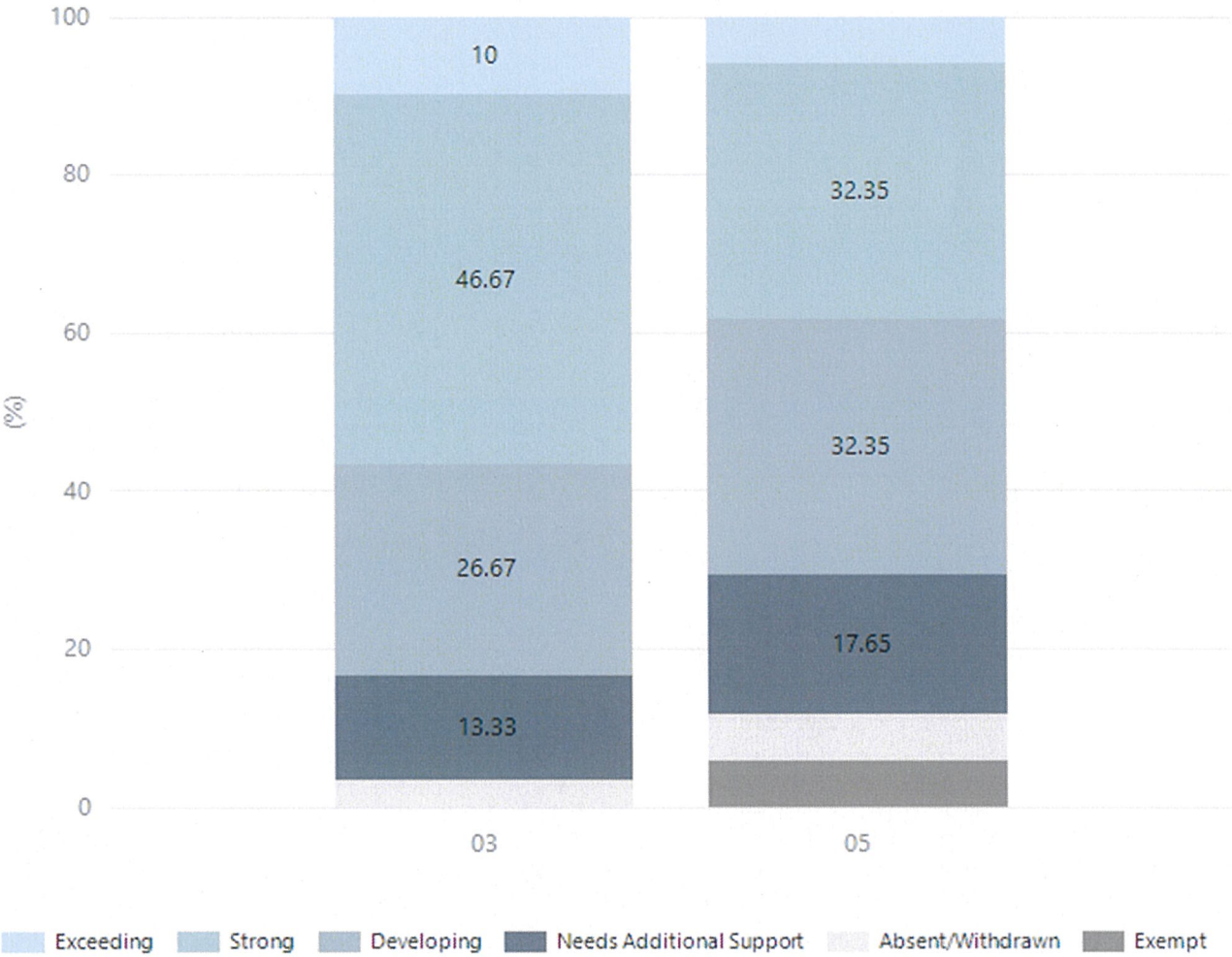
Grammar



Year Level	03	05
Exceeding	1	
Strong	12	6
Developing	10	10
Needs Additional Support	6	14
Absent/Withdrawn	1	2
Exempt		2
Total	30	34

Data Source: Department for Education Assessment Data Holdings, 2024. If there are less than 6 students who sat NAPLAN in a school, no information will be shown. If a year level has less than 6 students, that year level will not be shown in NAPLAN results.

Spelling



Year Level	03	05
Exceeding	3	2
Strong	14	11
Developing	8	11
Needs Additional Support	4	6
Absent/Withdrawn	1	2
Exempt		2
Total	30	34

Data Source: Department for Education Assessment Data Holdings, 2024. If there are less than 6 students who sat NAPLAN in a school, no information will be shown. If a year level has less than 6 students, that year level will not be shown in NAPLAN results.

Preschool Attendance

	Term 1	Term 2	Term 3	Term 4
2021 centre	80.3%	90.8%	89.6%	79.8%
2022 centre	73.3%	82.6%	76.1%	76%
2023 centre	74.2%	80.8%	76.2%	79.3%
2024 centre	86.1%		77%	

Based on attendances recorded in the two-week reference period each term. Data for eligible enrolments as described in the department's Enrolment policy. Attendance rates may differ to previous reporting with the transfer from calculations based on deemed attendance to actual attendance using booked hours divided by attended hours. Data Source: Department for Education Attendance Data, Semester 1 Report 2024. A blank cell indicates there we no students enrolled.

School Attendance

Year Level	2022	2023	2024
Reception	81.8%	87.8%	84.7%
Year 01	87.2%	85.5%	88.7%
Year 02	90.1%	86.8%	87.5%
Year 03	81.9%	89.3%	90.3%
Year 04	84.2%	86.3%	89.7%
Year 05	87.0%	85.1%	85.7%
Year 06	84.6%	85.3%	87.3%
Primary Other	50.0%	85.0%	
Total	84.9%	86.5%	87.6%

Data Source: Department for Education Attendance Data, Semester 1 Report 2024. A blank cell indicates there we no students enrolled. 'Primary Other' includes students enrolled in specialised education options. 'Secondary Other' includes students who have already spent a year at Year 12 and elected to undertake further study at Year 12.

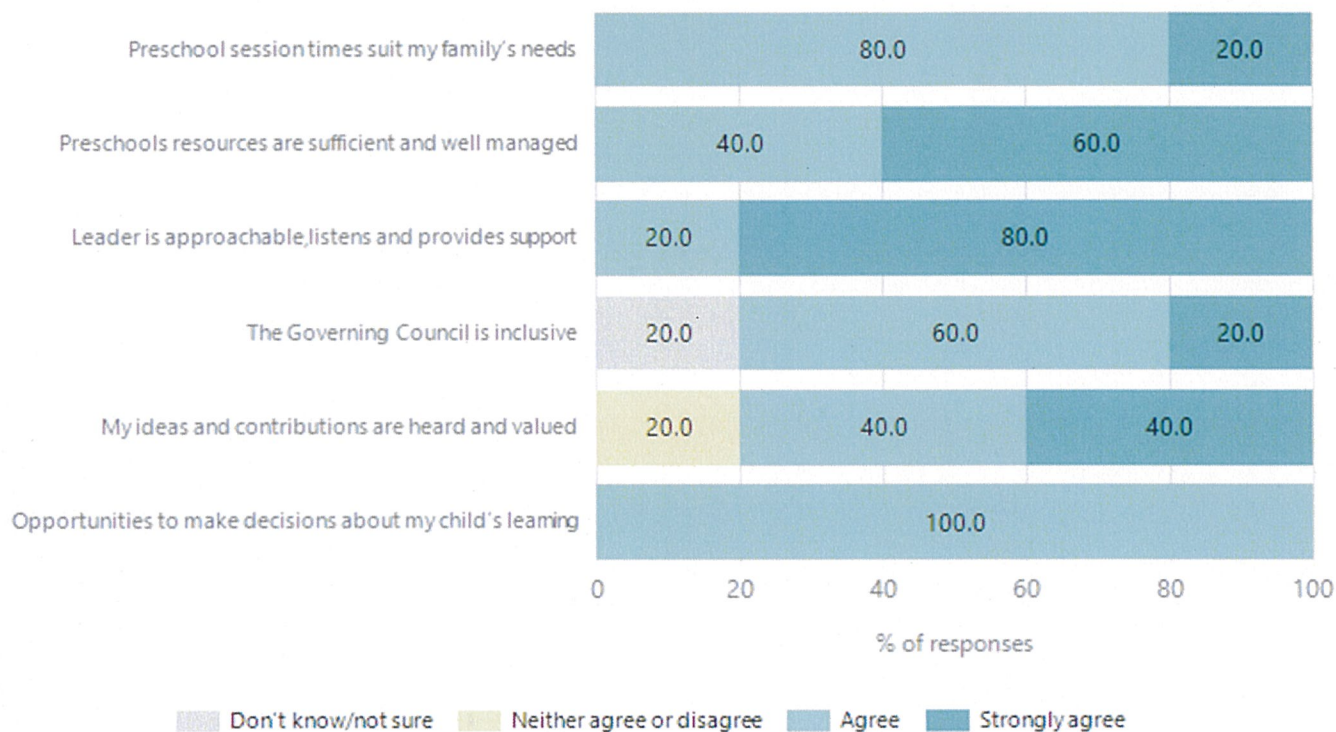
Attendance Comment

In South Australia, preschool attendance is not compulsory, but it is strongly encouraged. Preschool gives children the best opportunity to develop skills, which prepare them for school. These benefits include establishing positive routines and habits, friendships and connections as well as developing communication, problem-solving and creative skills. All children are entitled to access a preschool program over 4 terms the year before they start school.

In South Australia, all children and young people must be in school from 6 years to 16 years old. They must attend a government or non-government school full time. From age 16 to 17 however, young people must attend school or an approved learning program (such as an apprenticeship, traineeship, accredited course or university). Schools and parents must encourage and support students to come to school every day. Parents and caregivers must make sure their child is enrolled in a school, and attends school all day and everyday it is open, unless a child is sick or has an approved exemption. Teachers and leaders actively follow up when a student misses school, including recording all absences and non-attendance. All schools in South Australia have local attendance procedures governed under the Education and Children's Services Regulations 2020.

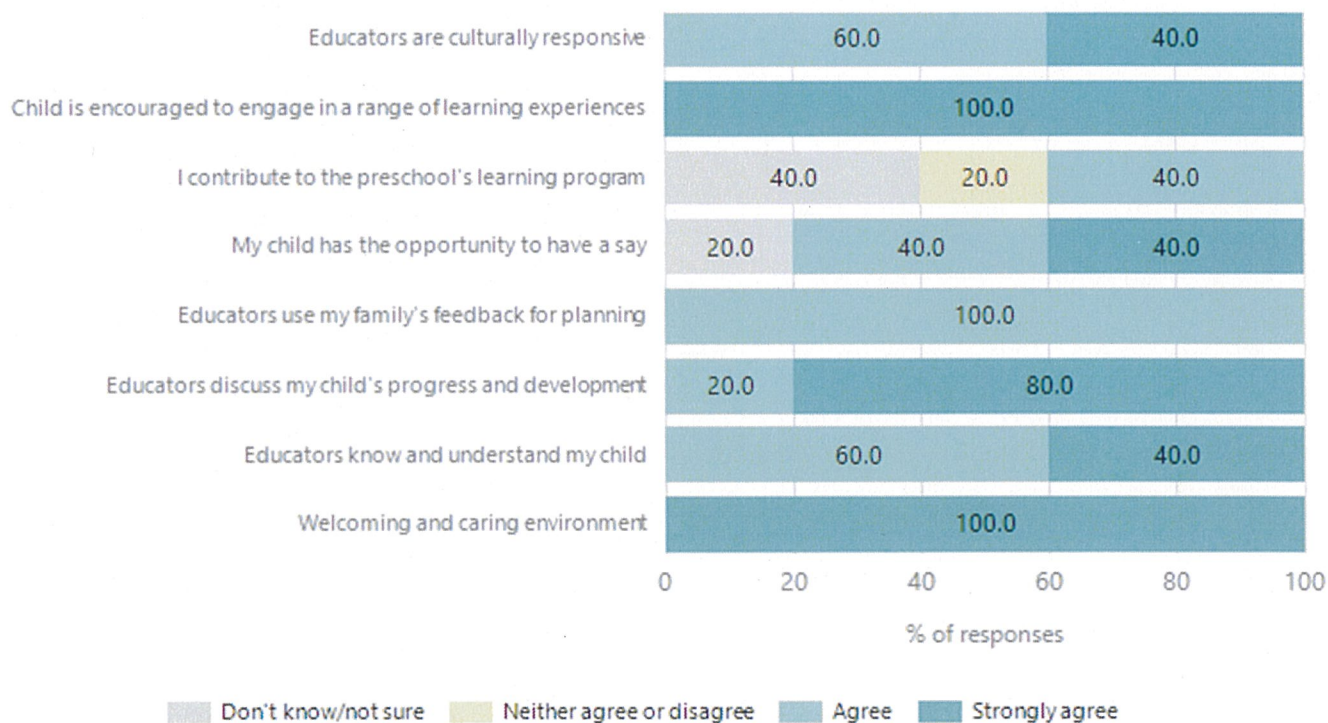
Preschool Family Opinion Survey

Governance, Leadership and Management



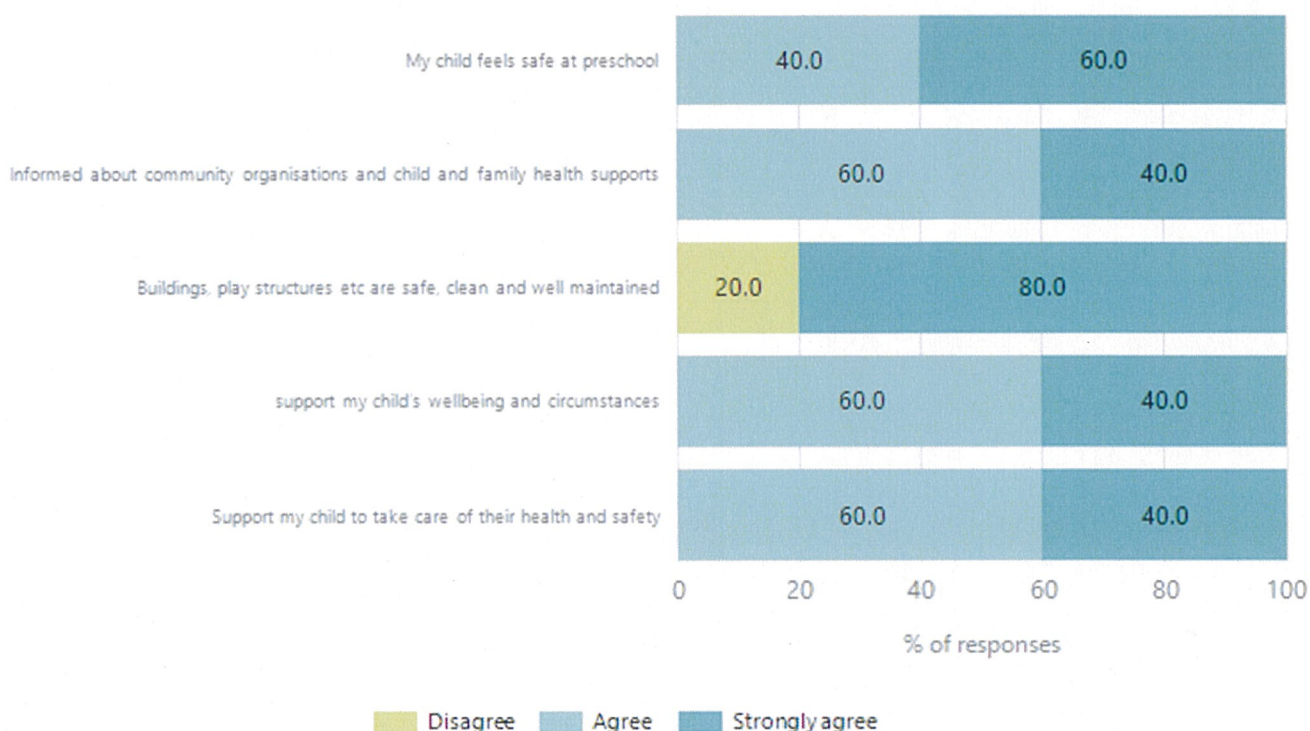
Data Source: 2024 Department for Education Preschool Family Opinions Survey, Term 3 2024.

Quality of Teaching and Learning



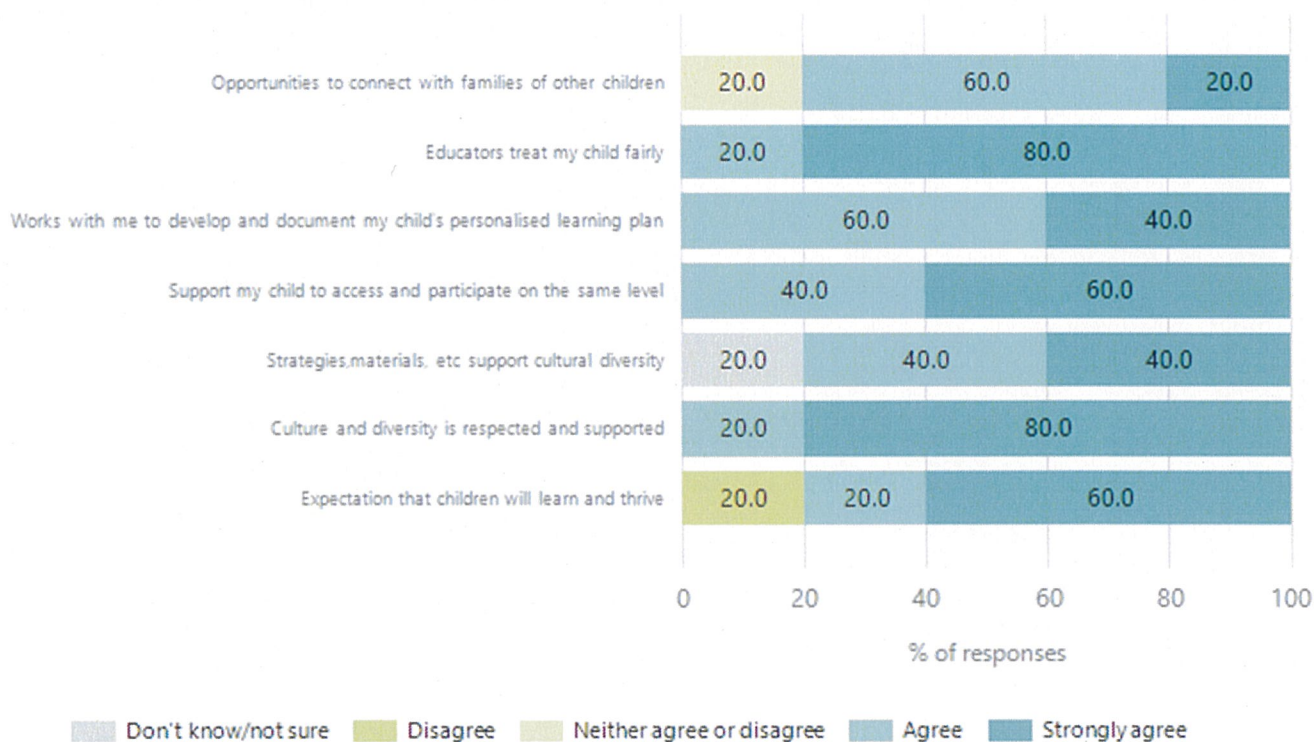
Data Source: 2024 Department for Education Preschool Family Opinions Survey, Term 3 2024.

Safety, Health and Wellbeing



Data Source: 2024 Department for Education Preschool Family Opinions Survey, Term 3 2024.

Support and Inclusion

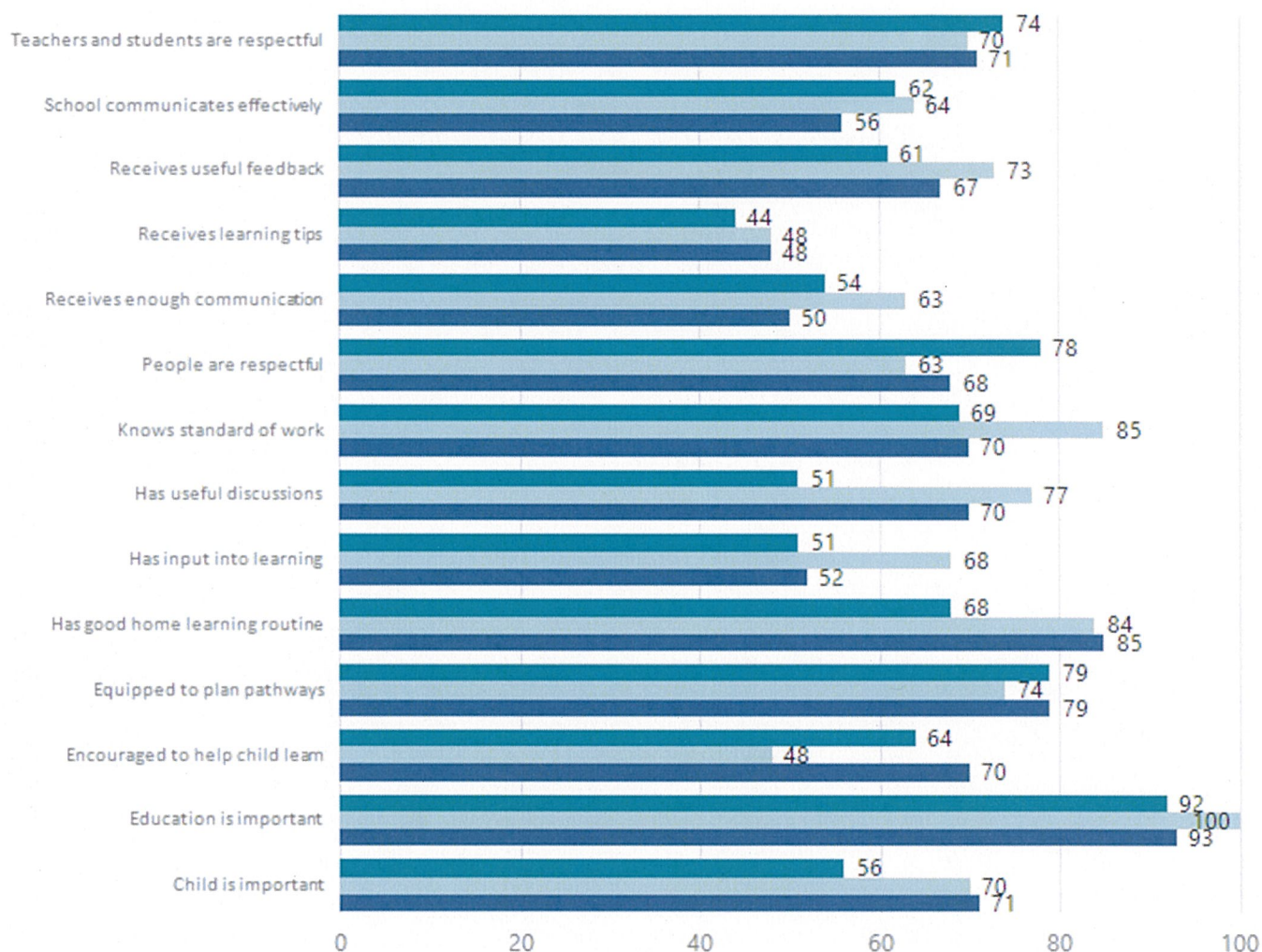


Data Source: 2024 Department for Education Preschool Family Opinions Survey, Term 3 2024.

School Parent Opinion Survey Results

Proportion of agree/strongly agree response(%)

2022 2023 2024



Data Source: 2024 Department for Education Parent Opinions Survey, Term 3 2024.

Destination Schools

Feeder Schools (Site number - Name)	2022	2023	2024
0973 - Paradise Primary School	3.1%		
1048 - Para Vista Primary School	68.8%	53.7%	54.9%
1177 - Salisbury Heights Primary School	3.1%		
1210 - Modbury West School		3.7%	9.8%
8003 - Heritage College Inc	3.1%		
8439 - Tyndale Christian School	3.1%		
9043 - Pinnacle College	3.1%	3.7%	5.9%
9115 - Prescott Primary Northern	9.4%	11.1%	9.8%
9155 - Garden College		3.7%	
9164 - Playford College	3.1%		
9999 - Unknown	3.1%	18.5%	5.9%

Note: The data is collected in term 3. It does not reflect actual schools enrolled in by existing preschool children. A blank cell indicates there was no data for students enrolled.

Data Source: Department for Education Destination Data Report, 2024.

Intended Destination

Leave Reason	Number	%
IS - INTERSTATE	1	20.0%
NG - ATTENDING NON-GOV SCHOOL IN SA	2	40.0%
TG - TRANSFERRED TO SA GOVERNMENT SCHOOL	2	40.0%

Data Source: Department for Education Destination Data Report, 2024. Data extract term 3 2024. Data shows recorded destinations for students that left the school in the previous year. Data is uploaded by schools in term 3 and may not reflect final or total figures at time of report creation.

Highest Qualifications held by the teaching workforce and workforce composition

All teachers at this school are qualified and registered with the SA Teachers Registration Board.

Qualification Level	Number of Qualifications
Bachelor's degrees or Diplomas	14
Postgraduate Qualifications	6

Data Source: Data extracted from Mandatory Workforce Information Collections as on the last pay date of June 2024. As self-reported by staff in the system.

Please note: Data includes staff who are Actively employed and on extended paid leave. Please note only the highest qualification of the Teaching staff is reported. Excludes any number of other certifications earned.

Workforce composition including indigenous staff

	Teaching Staff		Non-Teaching Staff	
	Indigenous	Non-Indigenous	Indigenous	Non-Indigenous
Full-Time Equivalents	0.0	16.9	0.0	13.0
Persons	0.0	20.0	0.0	21.0

Data Source: Data extracted from Mandatory Workforce Information Collection as on the last pay date of June 2024.

Please note: Data includes staff who are actively employed and on extended paid leave. "Indigenous category" is self-reported by staff in the system.

Financial Statement

Funding Source	Amount
Grants: State	\$3,417,189
Grants: Commonwealth	\$1500
Parent Contributions	\$68,874
Fund Raising	\$2523
Other	Nil

Data Source: School supplied data.