



2024 annual report to the Community

Carlton School and Carlton Preschool

Carlton School number: 981

Carlton Preschool number: 5454

Partnership: Port Augusta - Quorn



School principal:

Linda Ritchie

Signature

Date of endorsement:

19/06/2025



Government
of South Australia
Department for Education

Context Statement

Carlton School caters for students from R-9. At the time of this report, the enrolment in 2024 is 82. Carlton School is classified as Category 1 on the Department for Education Index of Educational Disadvantage. At the time of this report, the school population includes 100% Aboriginal students, 18% students with disabilities, 48% students with English as an additional language or dialect (EALD) funded background, 7% children/young people in care. Further information about the school is available on the school's website (including its context statement), as well as the My School website.

Information about Carlton Preschool is available on the centres website, as well as the Australian Childrens Education and Care Quality Authority (ACECQA) website.

Data Source: Department for Education data holdings from Mid census captured in AUGUST 2024.

Governing Council Report

Performance Summary

NAPLAN Proficiency

In 2023 the Australian Curriculum, Assessment and Reporting Authority (ACARA) - a Commonwealth Independent statutory authority - announced changes to NAPLAN performance reporting. The new approach replaces the previous numerical NAPLAN bands and the national minimum standard.

NAPLAN results are not shown where sites have enrolment of less than 6 students in the applicable NAPLAN year levels.

Preschool Attendance

	Term 1	Term 2	Term 3	Term 4
2021 centre	50%	59.5%	52.6%	41.7%
2022 centre	55.2%	53.7%	61.1%	59.6%
2023 centre	50%	43.1%	42.9%	45.4%
2024 centre	52.2%		45.4%	

Based on attendances recorded in the two-week reference period each term. Data for eligible enrolments as described in the department's Enrolment policy. Attendance rates may differ to previous reporting with the transfer from calculations based on deemed attendance to actual attendance using booked hours divided by attended hours. Data Source: Department for Education Attendance Data, Semester 1 Report 2024. A blank cell indicates there we no students enrolled.

School Attendance

Year Level	2022	2023	2024
Reception	58.0%	56.4%	65.0%
Year 01	72.1%	64.0%	58.9%
Year 02	70.8%	74.8%	63.7%
Year 03	63.8%	70.3%	79.8%
Year 04	63.4%	75.8%	72.8%
Year 05	63.4%	57.6%	77.5%
Year 06	59.7%	64.9%	62.6%
Year 07	55.7%	75.4%	51.4%
Year 08	43.4%	58.8%	50.6%
Year 09	38.8%	46.1%	55.3%
Year 10	25.3%		
Total	59.3%	62.9%	63.3%

Data Source: Department for Education Attendance Data, Semester 1 Report 2024. A blank cell indicates there we no students enrolled. 'Primary Other' includes students enrolled in specialised education options. 'Secondary Other' includes students who have already spent a year at Year 12 and elected to undertake further study at Year 12.

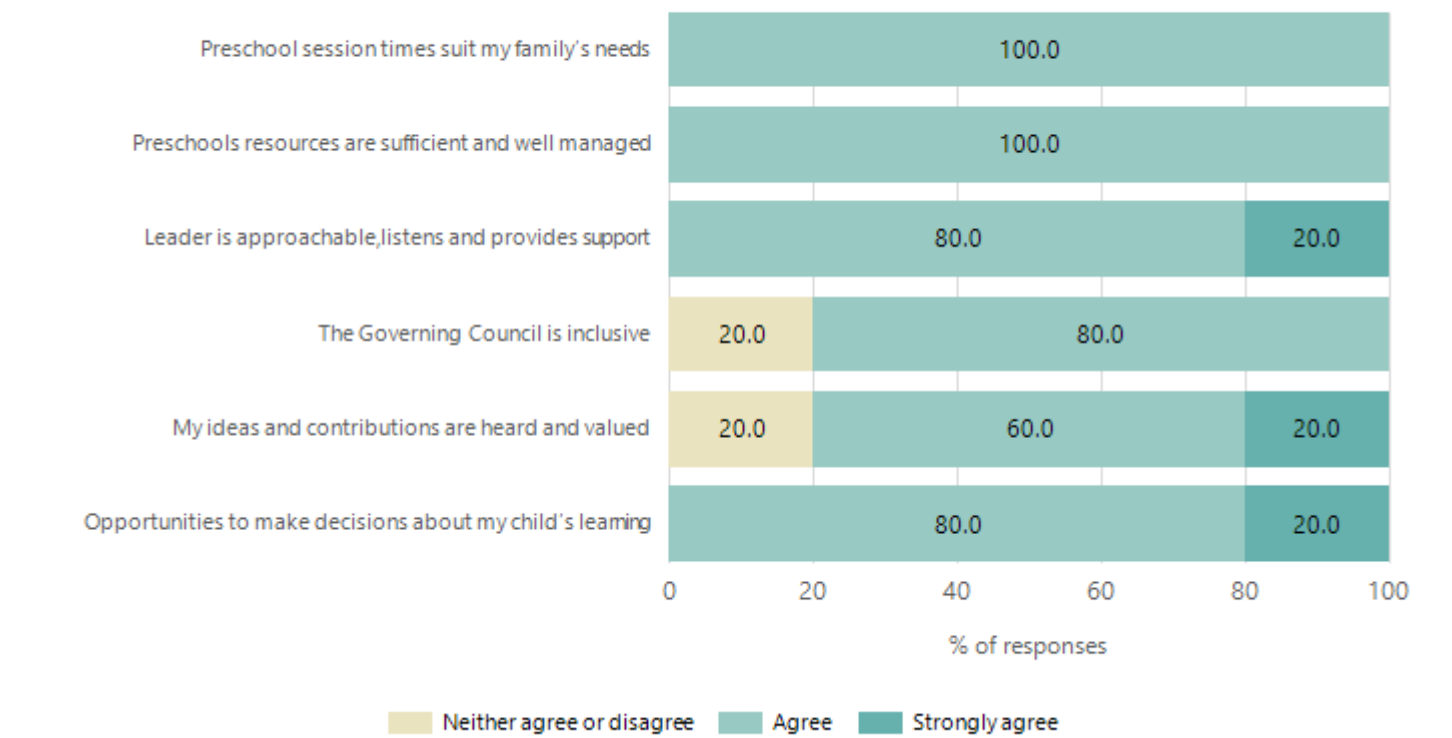
Attendance Comment

In South Australia, preschool attendance is not compulsory, but it is strongly encouraged. Preschool gives children the best opportunity to develop skills, which prepare them for school. These benefits include establishing positive routines and habits, friendships and connections as well as developing communication, problem-solving and creative skills. All children are entitled to access a preschool program over 4 terms the year before they start school.

In South Australia, all children and young people must be in school from 6 years to 16 years old. They must attend a government or non-government school full time. From age 16 to 17 however, young people must attend school or an approved learning program (such as an apprenticeship, traineeship, accredited course or university). Schools and parents must encourage and support students to come to school every day. Parents and caregivers must make sure their child is enrolled in a school, and attends school all day and everyday it is open, unless a child is sick or has an approved exemption. Teachers and leaders actively follow up when a student misses school, including recording all absences and non-attendance. All schools in South Australia have local attendance procedures governed under the Education and Children's Services Regulations 2020.

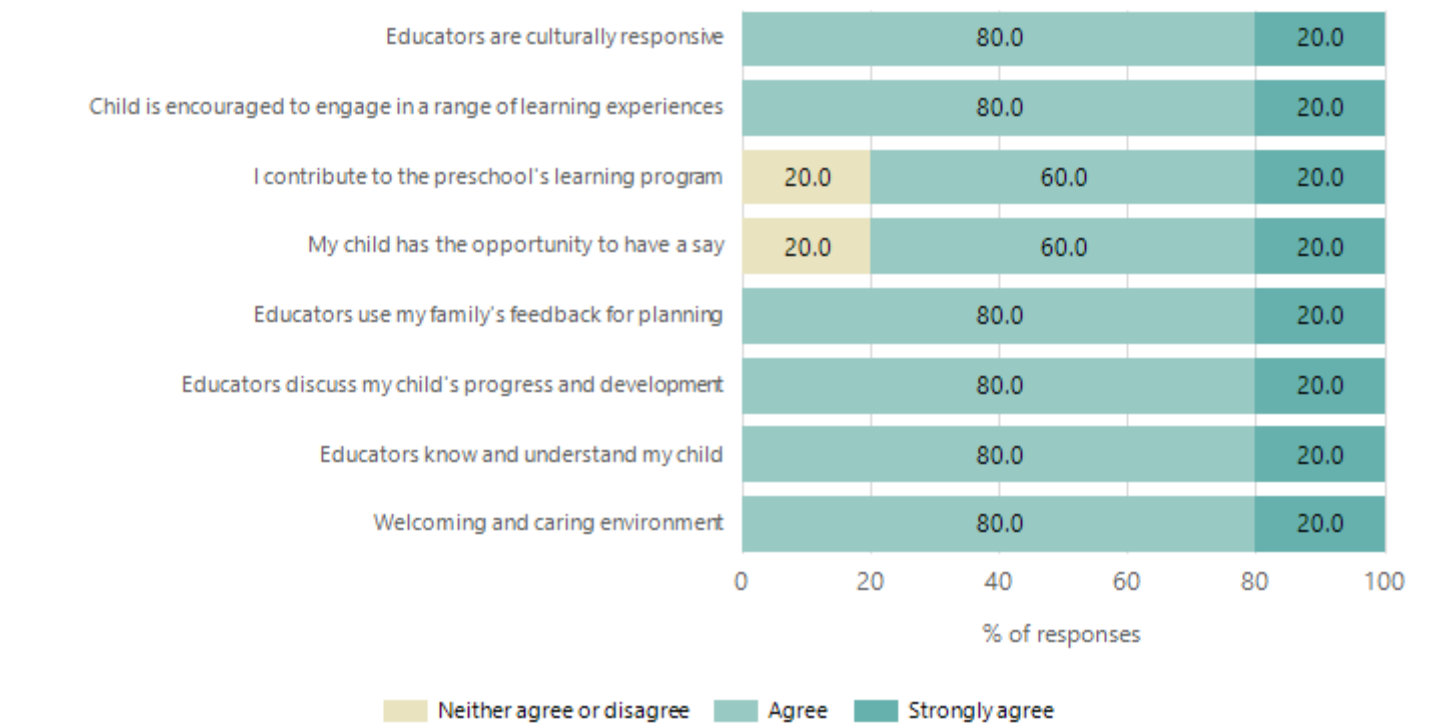
Preschool Family Opinion Survey

Governance, Leadership and Management



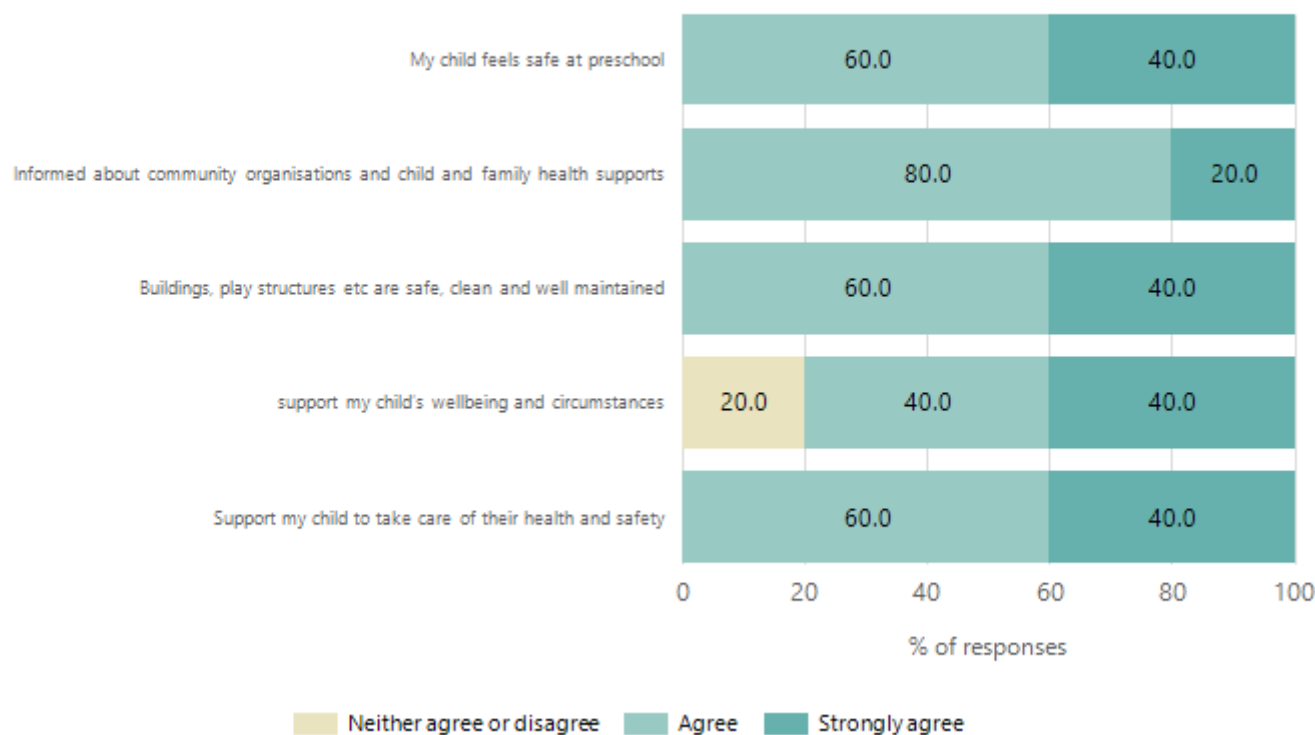
Data Source: 2024 Department for Education Preschool Family Opinions Survey, Term 3 2024.

Quality of Teaching and Learning



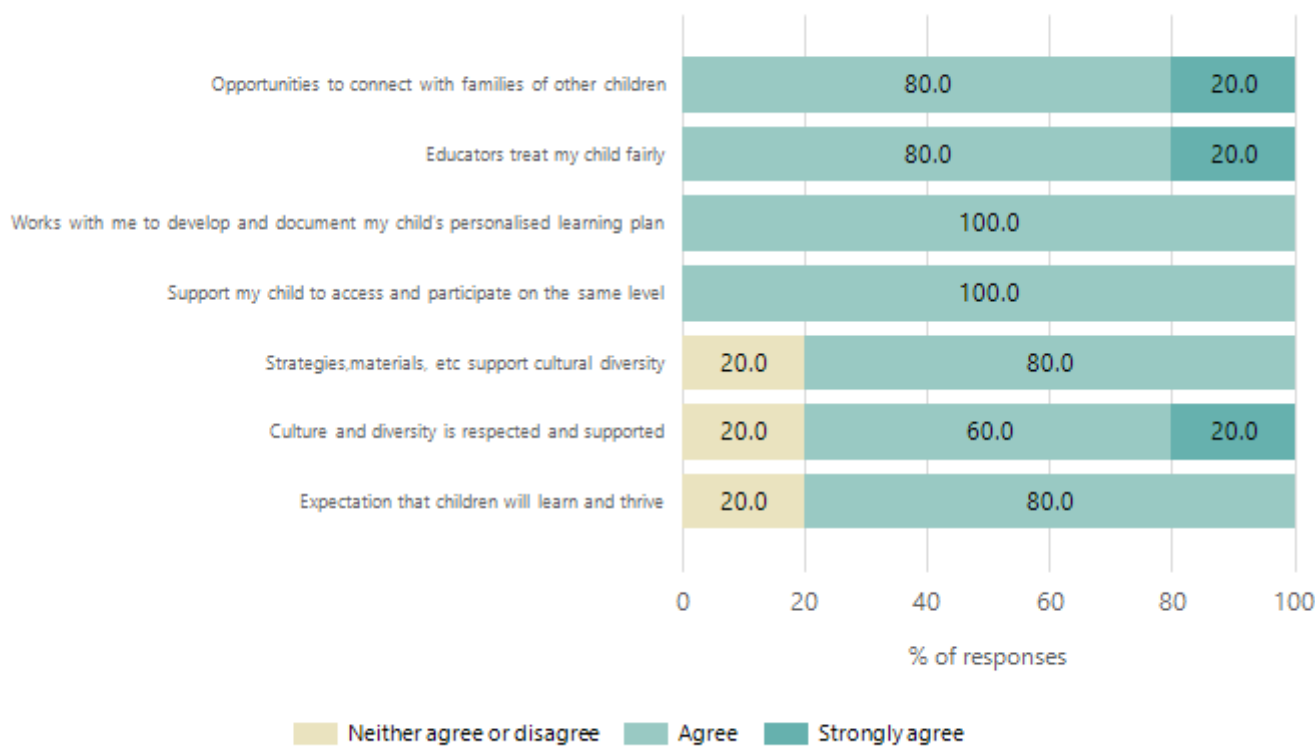
Data Source: 2024 Department for Education Preschool Family Opinions Survey, Term 3 2024.

Safety, Health and Wellbeing



Data Source: 2024 Department for Education Preschool Family Opinions Survey, Term 3 2024.

Support and Inclusion



Data Source: 2024 Department for Education Preschool Family Opinions Survey, Term 3 2024.

Destination Schools

Feeder Schools (Site number - Name)	2022	2023	2024
0355 - Port Augusta West Primary School			4.8%
0981 - Carlton School	33.3%	42.9%	57.1%
0990 - Augusta Park Primary School	27.8%		4.8%
1399 - Port Augusta Special School		4.8%	4.8%
9122 - Caritas College	11.1%	4.8%	4.8%
9999 - Unknown	27.8%	47.6%	23.8%

Note: The data is collected in term 3. It does not reflect actual schools enrolled in by existing preschool children. A blank cell indicates there was no data for students enrolled.

Data Source: Department for Education Destination Data Report, 2024.

Intended Destination

Leave Reason	Number	%
TG - TRANSFERRED TO SA GOVERNMENT SCHOOL	17	100.0%

Data Source: Department for Education Destination Data Report, 2024. Data extract term 3 2024. Data shows recorded destinations for students that left the school in the previous year. Data is uploaded by schools in term 3 and may not reflect final or total figures at time of report creation.

Highest Qualifications held by the teaching workforce and workforce composition

All teachers at this school are qualified and registered with the SA Teachers Registration Board.

Qualification Level	Number of Qualifications
Bachelor's degrees or Diplomas	9
Postgraduate Qualifications	2

Data Source: Data extracted from Mandatory Workforce Information Collections as on the last pay date of June 2024. As self-reported by staff in the system.

Please note: Data includes staff who are Actively employed and on extended paid leave. Please note only the highest qualification of the Teaching staff is reported. Excludes any number of other certifications earned.

Workforce composition including indigenous staff

	Non-Teaching Staff		Teaching Staff	
	Indigenous	Non-Indigenous	Indigenous	Non-Indigenous
Full-Time Equivalents	6.8	7.7	2.0	8.1
Persons	9.0	11.0	2.0	9.0

Data Source: Data extracted from Mandatory Workforce Information Collection as on the last pay date of June 2024.

Please note: Data includes staff who are actively employed and on extended paid leave. "Indigenous category" is self-reported by staff in the system.

Financial Statement

Funding Source	Amount
Grants: State	2,944,406.00
Grants: Commonwealth	9,000.00
Parent Contributions	4,125.00
Fund Raising	0
Other	13,875.00

Data Source: School supplied data.