



Springbank Secondary College

2023 annual report to the Community

Springbank Secondary College

Springbank Secondary College number: 975

Partnership: Mitcham Plains



School principal:

Andrew Dunn

 Signature

Date of endorsement:

26/02/2024



Government
of South Australia
Department for Education

Context Statement

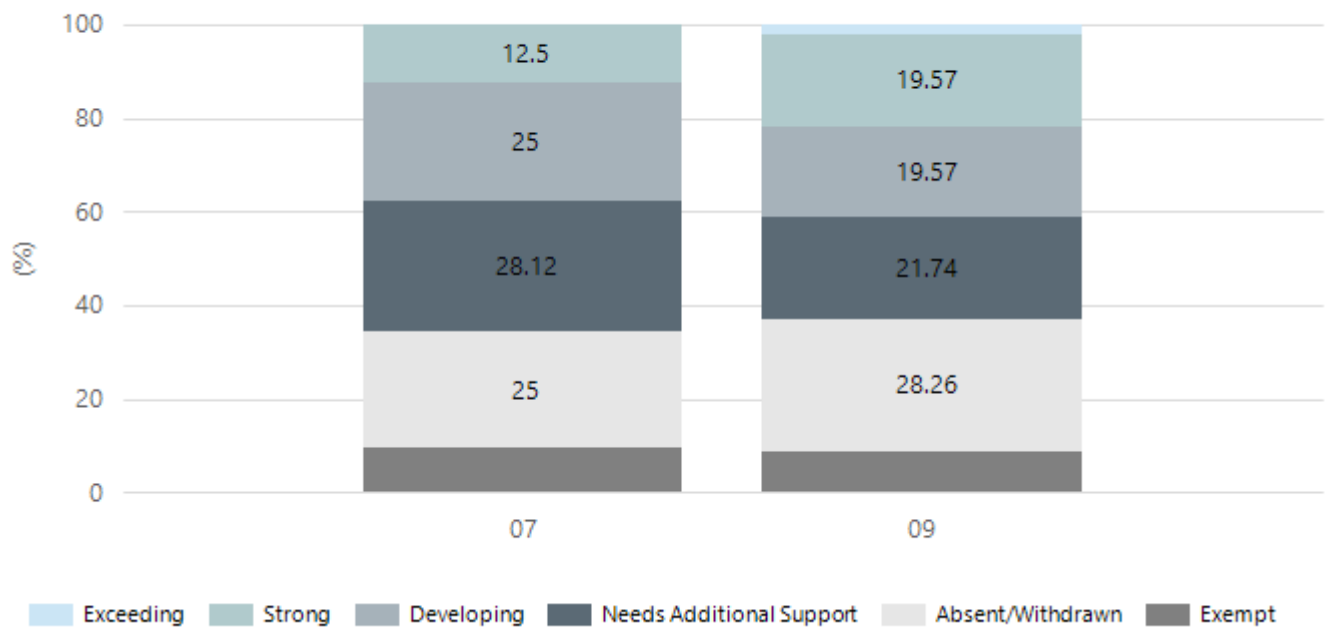
Springbank Secondary College caters for students from 7-12. At the time of this report, the enrolment in 2023 is 216. Springbank Secondary College is classified as Category 4 on the Department for Education Index of Educational Disadvantage. At the time of this report, the school population includes 2% Aboriginal students, 47% students with disabilities, 5% students with English as an additional language or dialect (EALD) funded background, 7% children/young people in care. Further information about the school is available on the school's website (including its context statement), as well as the My School website.

Performance Summary

NAPLAN Proficiency

In 2023, the Australian Curriculum, Assessment and Reporting Authority (ACARA) - a Commonwealth Independent statutory authority - announced changes to NAPLAN performance reporting. This new way of reporting by ACARA that NAPLAN results from 2023 will not be comparable to previous years. The new approach replaces the previous numerical NAPLAN bands and the national minimum standard.

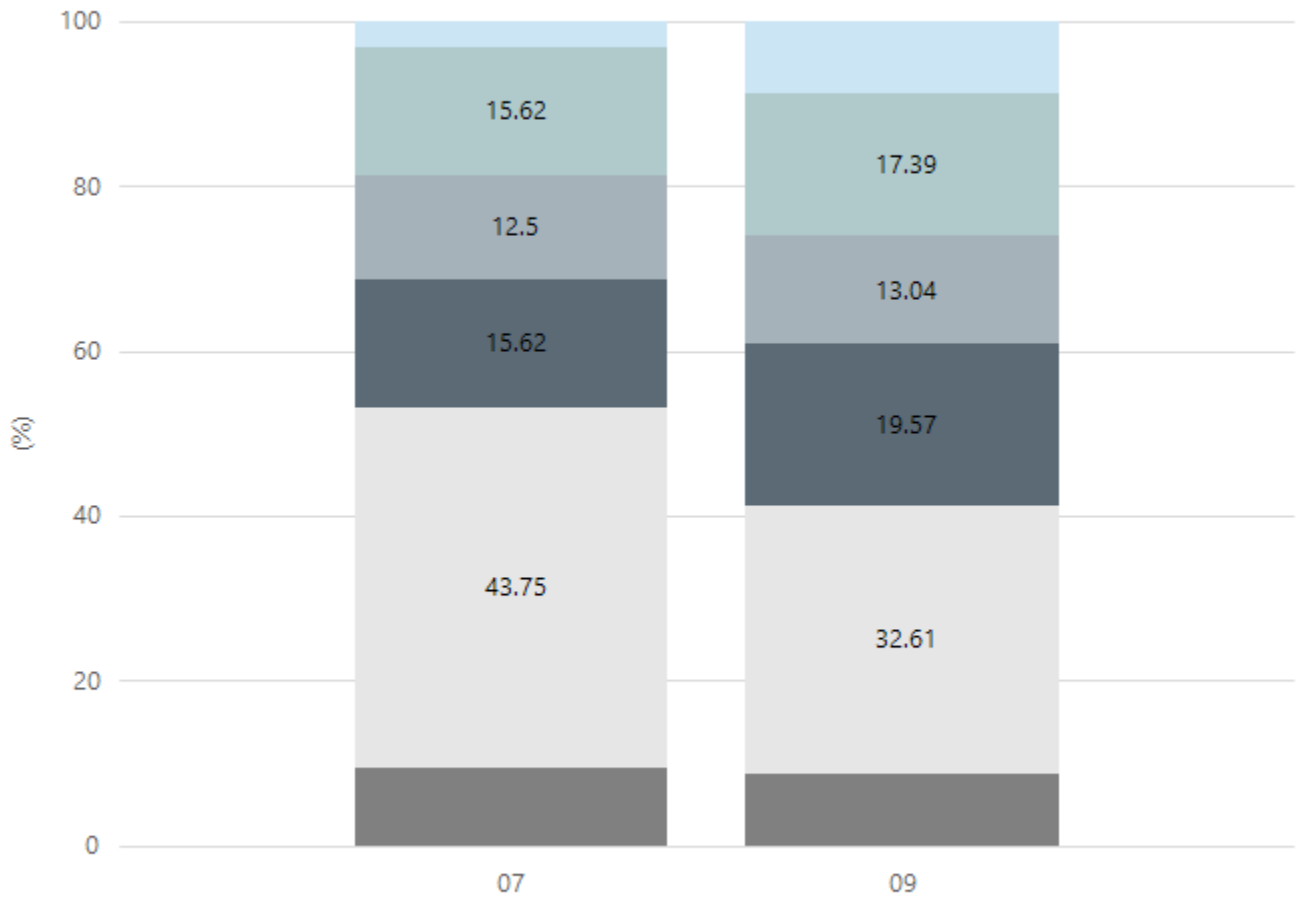
Numeracy



Year Level	07	09
Exceeding		1
Strong	4	9
Developing	8	9
Needs Additional Support	9	10
Absent/Withdrawn	8	13
Exempt	3	4
Total	32	46

Data Source: Department for Education Assessment Data Holdings, 2023. When there are less than six students in a cohort, no data is supplied.

Reading

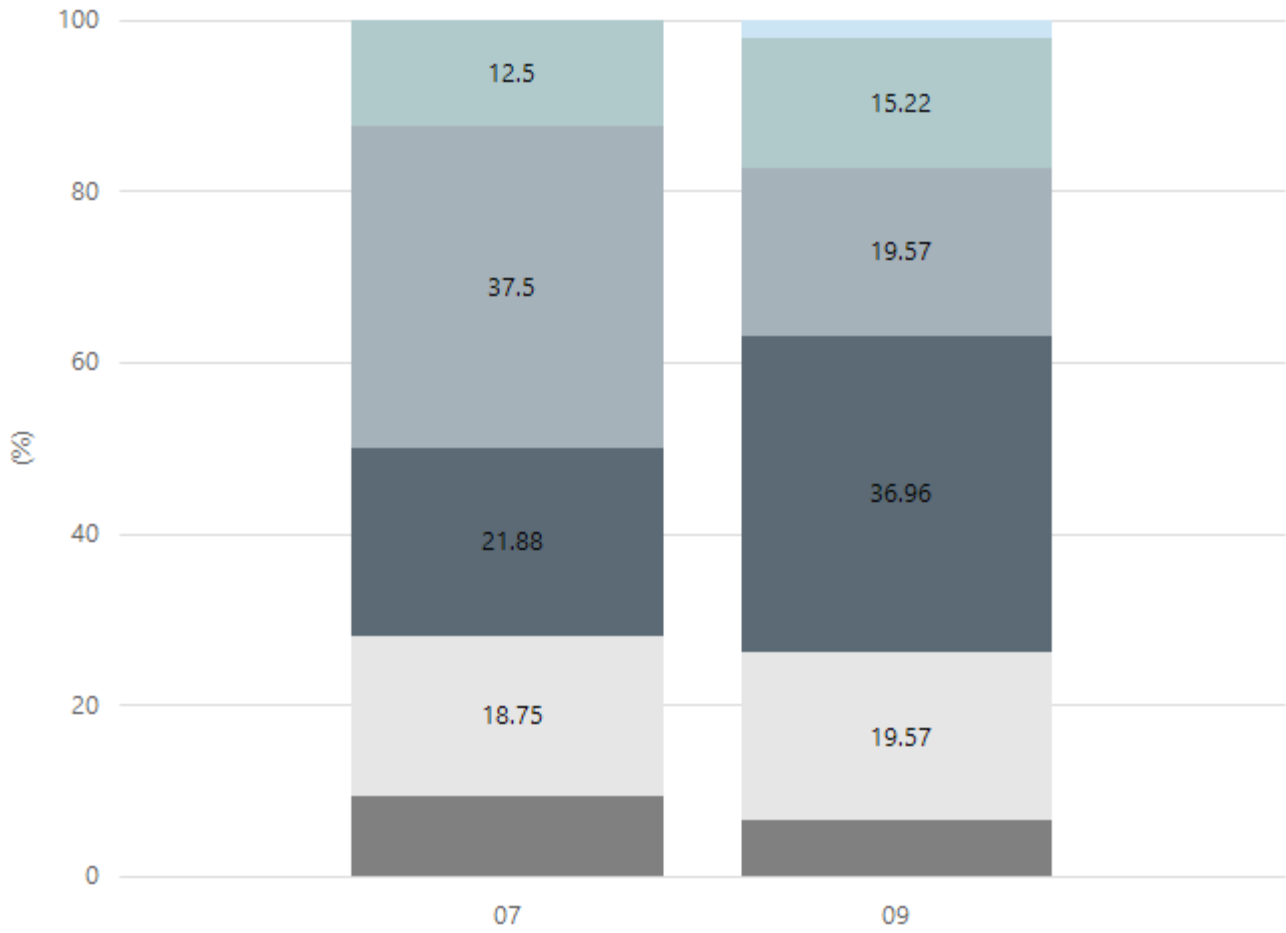


Exceeding Strong Developing Needs Additional Support Absent/Withdrawn Exempt

Year Level	07	09
Exceeding	1	4
Strong	5	8
Developing	4	6
Needs Additional Support	5	9
Absent/Withdrawn	14	15
Exempt	3	4
Total	32	46

Data Source: Department for Education Assessment Data Holdings, 2023. When there are less than six students in a cohort, no data is supplied.

Writing

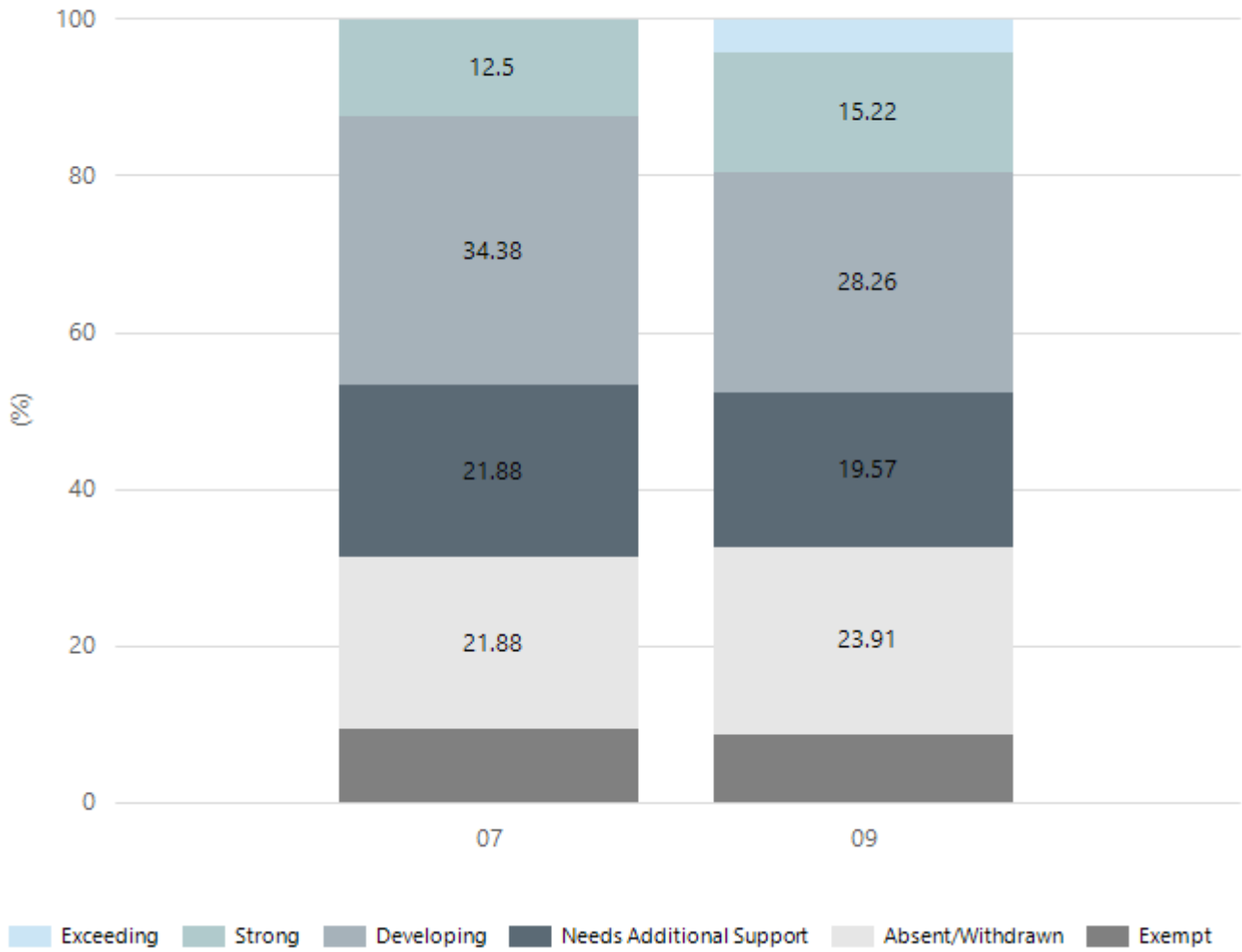


Exceeding Strong Developing Needs Additional Support Absent/Withdrawn Exempt

Year Level	07	09
Exceeding		1
Strong	4	7
Developing	12	9
Needs Additional Support	7	17
Absent/Withdrawn	6	9
Exempt	3	3
Total	32	46

Data Source: Department for Education Assessment Data Holdings, 2023. When there are less than six students in a cohort, no data is supplied.

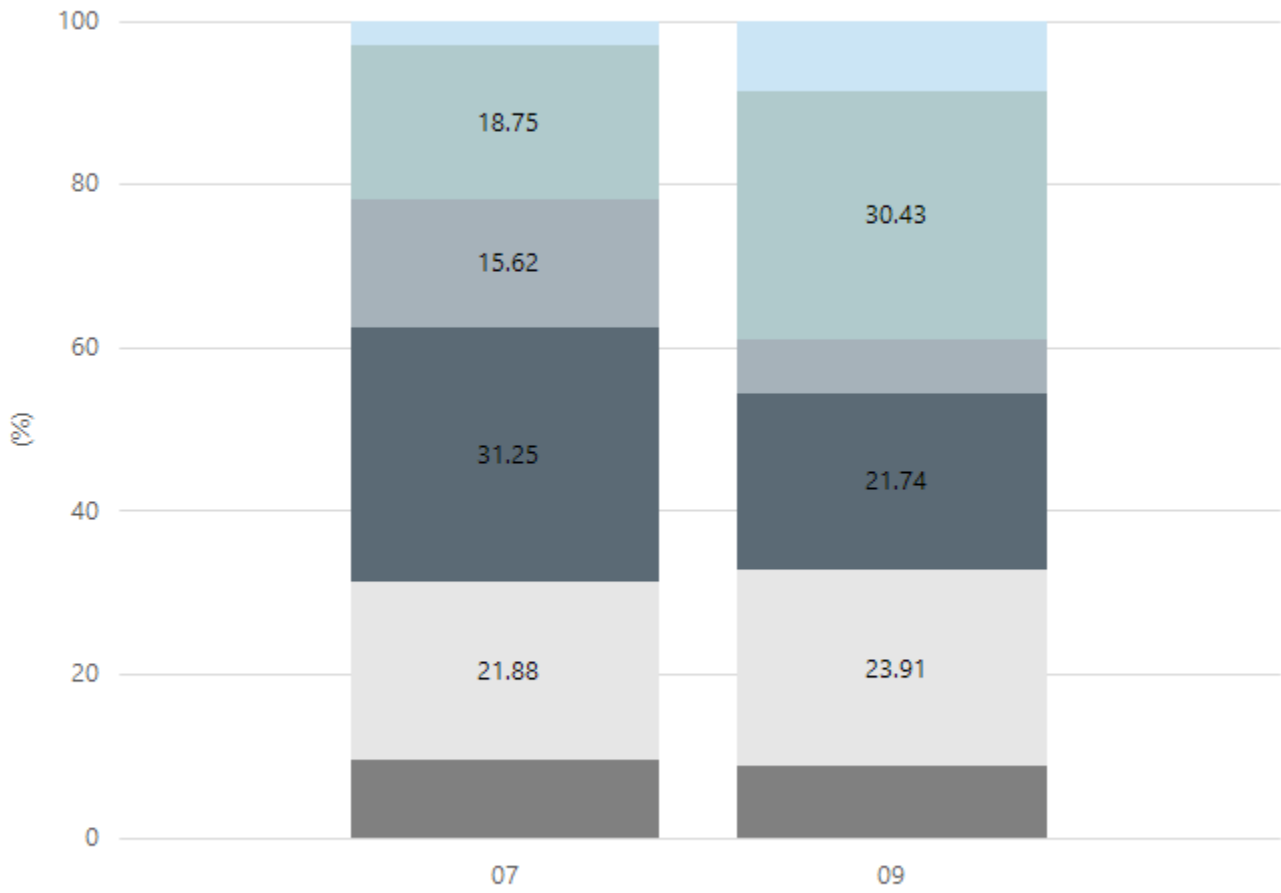
Grammar



Year Level	07	09
Exceeding		2
Strong	4	7
Developing	11	13
Needs Additional Support	7	9
Absent/Withdrawn	7	11
Exempt	3	4
Total	32	46

Data Source: Department for Education Assessment Data Holdings, 2023. When there are less than six students in a cohort, no data is supplied.

Spelling



Exceeding Strong Developing Needs Additional Support Absent/Withdrawn Exempt

Year Level	07	09
Exceeding	1	4
Strong	6	14
Developing	5	3
Needs Additional Support	10	10
Absent/Withdrawn	7	11
Exempt	3	4
Total	32	46

Data Source: Department for Education Assessment Data Holdings, 2023. When there are less than six students in a cohort, no data is supplied.

South Australian Certificate of Education - SACE

SACE Stage 2 Grades - Percentage of grades that are C- or above for attempted SACE subjects (SEA)

2020	2021	2022	2023
84%	95%	95%	90%

Data Source: SACE School Data Reports, as of February 2023 for 2020-2022. 2023 SACE results are School supplied data. When there are less than six students, no data is supplied. Due to rounding of percentages, total results may not add up to 100%.

SACE Stage 2 Grade Distribution

Grade	2020	2021	2022	2023
A+		2%		
A	6%	3%	2%	
A-	16%	16%	2%	1%
B+	6%	11%	2%	6%
B		16%	11%	10%
B-	6%	8%	7%	12%
C+	23%	9%	25%	28%
C	23%	25%	25%	21%
C-	3%	6%	21%	12%
D+	10%		2%	4%
D	3%	2%	4%	4%
D-	3%	3%		

Data Source: SACE School Data Reports, as of February 2023 for 2020-2022. 2023 SACE results are School supplied data. When there are less than six students, no data is supplied. Due to rounding of percentages, total results may not add up to 100%.

SACE Completion - Percentage of completers out of those students who had the potential to complete their SACE in October that year

2020	2021	2022	2023
86%	95%	92%	100%

Data Source: SACE School Data Reports, as of February 2023 for 2020-2022. 2023 SACE results are School supplied data. When there are less than six students, no data is supplied. Due to rounding of percentages, total results may not add up to 100%.

Year 12 Students undertaking Vocational or Trade Training (VET)

	2021	2022	2023
Percentage of Year 12 students undertaking Vocational Training or Trade Training	20%	33%	31%
Percentage of Year 12 students attaining a Year 12 certificate or equivalent VET qualification	95%	95%	90%

Data Source: School supplied data

School Attendance

Year Level	2021	2022	2023
Year 07		77.5%	79.3%
Year 08	84.3%	85.6%	81.2%
Year 09	79.5%	75.3%	80.0%
Year 10	83.7%	79.2%	81.8%
Year 11	85.0%	83.9%	81.3%
Year 12	89.1%	84.0%	82.5%
Secondary Other	79.4%	80.2%	83.7%
Total	83.0%	81.0%	81.3%

Data Source: Department for Education Attendance Data, Semester 1 Report 2023. A blank cell indicates there were no students enrolled. 'Primary Other' includes students enrolled in specialised education options. 'Secondary Other' includes students who have already spent a year at Year 12 and elected to undertake further study at Year 12.

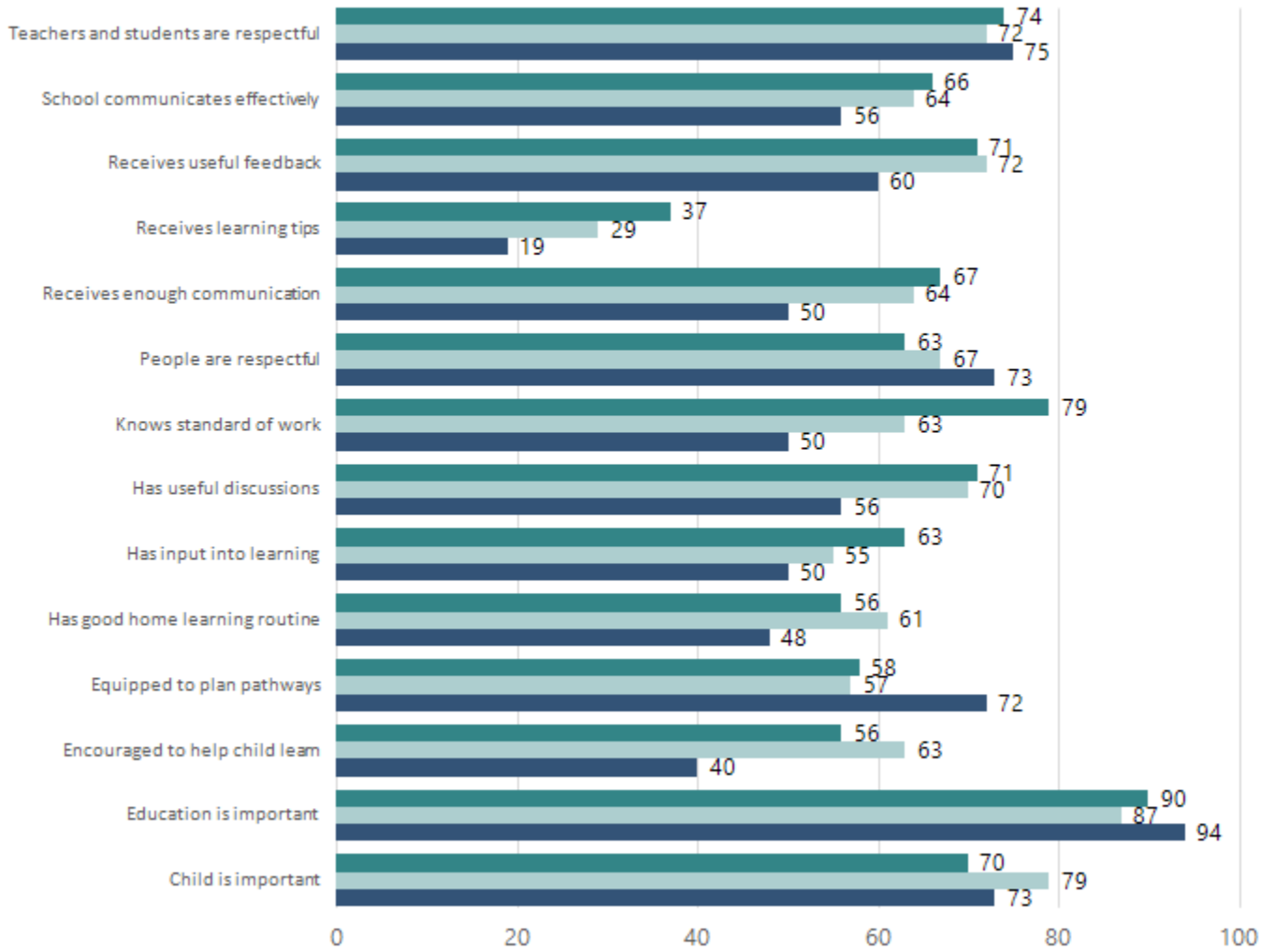
Attendance Comment

In South Australia, all children and young people must be in school from 6 years to 16 years old. They must attend a government or non-government school full time. From age 16 to 17 however, young people must attend school or an approved learning program (such as an apprenticeship, traineeship, accredited course or university). Schools and parents must encourage and support students to come to school every day. Parents and caregivers must make sure their child is enrolled in a school, and attends school all day and everyday it is open, unless a child is sick or has an approved exemption. Teachers and leaders actively follow up when a student misses school, including recording all absences and non-attendance. All schools in South Australia have local attendance procedures governed under the Education and Children's Services Regulations 2020.

Parent Opinion Survey Results

Proportion of agree/strongly agree response(%)

2021 2022 2023



Data Source: 2023 Department for Education Parent Opinions Survey, Term 3 2023.

Intended Destination

Leave Reason	Number	%
NG - ATTENDING NON-GOV SCHOOL IN SA	2	11.0%
OV - LEFT SA FOR OVERSEAS	1	5.0%
PE - PAID EMPLOYMENT IN SA	1	5.0%
TG - TRANSFERRED TO SA GOVERNMENT SCHOOL	10	53.0%
VI - LEFT SA FOR VIC	4	21.0%
WA - LEFT SA FOR WA	1	5.0%

Data Source: Department for Education Destination Data Report, 2023. Data extract term 3 2023. Data shows recorded destinations for students that left the school in the previous year. Data is uploaded by schools in term 3 and may not reflect final or total figures at time of report creation.

Highest Qualifications held by the teaching workforce and workforce composition

All teachers at this school are qualified and registered with the SA Teachers Registration Board.

Qualification Level	Number of Qualifications
Bachelor's degrees or Diplomas	11
Postgraduate Qualifications	14

Data Source: Data extracted from Mandatory Workforce Information Collections as on the last pay date of June 2023. As self-reported by staff in the system.

Please note: Data includes staff who are Actively employed and on extended paid leave. Please note only the highest qualification of the Teaching staff is reported. Excludes any number of other certifications earned.

Workforce composition including indigenous staff

	Non-Teaching Staff		Teaching Staff	
	Indigenous	Non-Indigenous	Indigenous	Non-Indigenous
Full-Time Equivalents	0.0	20.2	1.0	23.4
Persons	0.0	28.0	1.0	25.0

Data Source: Data extracted from Mandatory Workforce Information Collection as on the last pay date of June 2023.

Please note: Data includes staff who are actively employed and on extended paid leave. "Indigenous category" is self-reported by staff in the system.

Financial Statement

Funding Source	Amount
Grants: State	\$
Grants: Commonwealth	\$30,270
Parent Contributions	\$89,523
Fund Raising	\$5,245
Other	\$82,451

Data Source: School supplied data.

Governing Council Report

The Governing Council of Springbank Secondary College has faced some major challenges over the recent years for our school, 2023 didn't buck the trend. We faced the prospect of merging with another school, closure, the global pandemic, the building upgrade renovation disruption students and staff and the loss of a long-standing respected Principal. We now have an opportunity to consolidate and rejuvenate activities, strategies and growth of our school community with a new Principal and leadership and new parents in 2024.

As an inclusive unzoned school, we enjoy the enrolment and participation of students and their families from all over our community. We receive regular ongoing support from local representatives, Nadia Clancy MP, Louise Miller-Frost MP, our Mitcham Council Mayor Heather Holmes-Ross and local ward councillors Yvonne Todd and Aiden, however we still have aging science labs and facilities, and face the challenge of not being the school of choice for many locals choosing private education or larger public schools for their kids. Our Governing Council is a predominantly a volunteer group of committed, passionate and dedicated parents putting our school at the forefront of meeting recruitment targets and educational outcomes.

The highlight of 2023 would have to be the opening of the redeveloped wings of our school by Minister Blair Boyer. With students and staff traversing a building site for much of the year, our activities within the school were limited, we did, however host the long-awaited return of MAD (Music Arts Drama) Night for families. We continue to promote the Basketball Academy, participate in Ice Factor, support SALOS, Sturt and Books for Lesotho. None of this would be possible without our amazing staff at the school.

With a new leadership team comes a chance for reflection and planning for the future. We need to build on the aspects of our school that make us unique and stand out amongst others, whilst continuing improvements as we head toward a period of stability and student growth.

Whilst reviewing GC documents for the past several years, several projects earmarked for the future that were parked include but are not limited to:

- Build GC understanding and confidence in our respective role and functions, developing a culture where lived experiences and professional capabilities of parents are acknowledged and valued by the leadership, through involving parents in activities within the school community,
- Create an understanding of school's vision and priorities and key teaching practices, programs including inclusive education, interdisciplinary & STEAM learning, Icefactor, and the Basketball Academy for parents.
- Develop brief information card about Governing Council, its roles' and functions to promote GC to new parents. Also develop a School Information Brochure to distribute at school and community events that is collaboratively developed with resources to support conversations and promotion activities.
- Development and support of subcommittees such as:
 - Events (including the Year 12 Formal)
 - School pride
 - Grounds and Gardens
 - Community outreach

It is the perfect time for these ideas, developed by parents on Governing Council, to receive attention and action. 2024 holds much promise, I look forward to working with the new GC and new leadership team, along with the staff and families in supporting our kids into a successful future.

Danielle Duffield-Sorell
Governing Council Chair