

2024 annual report to the Community

Avenues College and Avenues College Children's Centre

Avenues College number: 906

Avenues College Children's Centre number: 1582

Partnership: Torrens



School principal:

Hamish McDonald

H McDonald

Date of endorsement:

10/02/2025



Government
of South Australia
Department for Education

Context Statement

Avenues College caters for students from R-12. At the time of this report, the enrolment in 2024 is 528. Avenues College is classified as Category 3 on the Department for Education Index of Educational Disadvantage. At the time of this report, the school population includes 23% Aboriginal students, 15% students with disabilities, 15% students with English as an additional language or dialect (EALD) funded background, 2% children/young people in care. Further information about the School is available on the School's website (including its context statement), as well as the My School website.

Information about Avenues College Children's Centre is available on the centre's website, as well as the Australian Children's Education and Care Quality Authority (ACECQA) website.

Data Source: Department for Education data holdings from Mid census captured in AUGUST 2024.

Governing Council Report

2024 was a highly productive year for the Avenues College Governing Council. We were pleased to welcome new members and extended our sincere gratitude to those who concluded their tenure, acknowledging their valuable contributions.

Throughout the year, we continued to enhance the public profile of our School, advocated for improved student safety at pedestrian crossings, and supported staff in exercising their right to disconnect from the workplace to promote a healthier work-life balance. The Governing Council also played a key role in reviewing and approving policies, budgets, materials and services fees, and pupil-free days.

Our subcommittees met regularly, with the fundraising subcommittee being particularly active. A highlight of the year was the successful hosting of our first primary school disco, which was greatly enjoyed by all who attended. Additionally, the maintenance and enhancement of our facilities remain ongoing priorities. We have observed an increase in student participation in the Out of School Hours Care (OSHC) program, and it has been pleasing to see students wearing their new uniform with pride.

On behalf of the Governing Council, we extend our appreciation to all members for their dedication and commitment throughout 2024. Your efforts are truly valued.

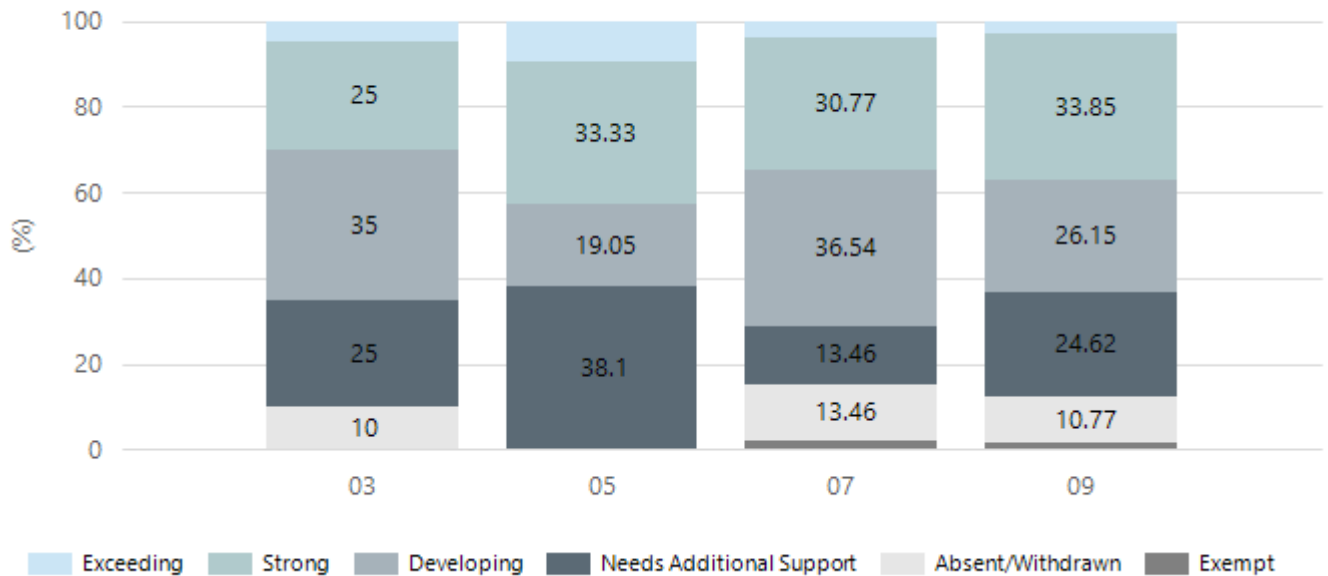
Kerryn Hibberde – Avenues College Governing Council Chair

Performance Summary

NAPLAN Proficiency

In 2023 the Australian Curriculum, Assessment and Reporting Authority (ACARA) - a Commonwealth Independent statutory authority - announced changes to NAPLAN performance reporting. The new approach replaces the previous numerical NAPLAN bands and the national minimum standard.

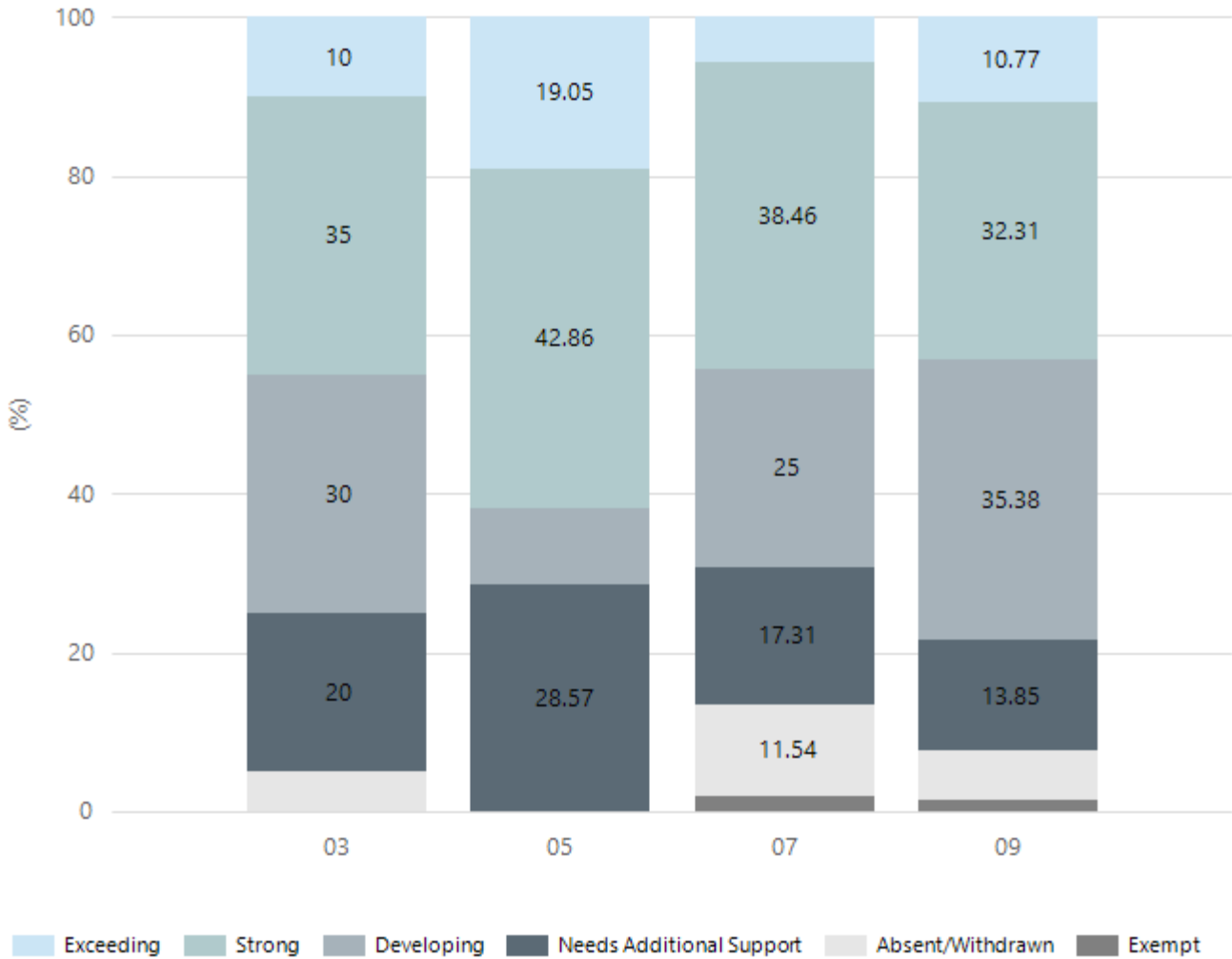
Numeracy



Year Level	03	05	07	09
Exceeding	1	2	2	2
Strong	5	7	16	22
Developing	7	4	19	17
Needs Additional Support	5	8	7	16
Absent/Withdrawn	2		7	7
Exempt			1	1
Total	20	21	52	65

Data Source: Department for Education Assessment Data Holdings, 2024. If there are less than 6 students who sat NAPLAN in a school, no information will be shown. If a year level has less than 6 students, that year level will not be shown in NAPLAN results.

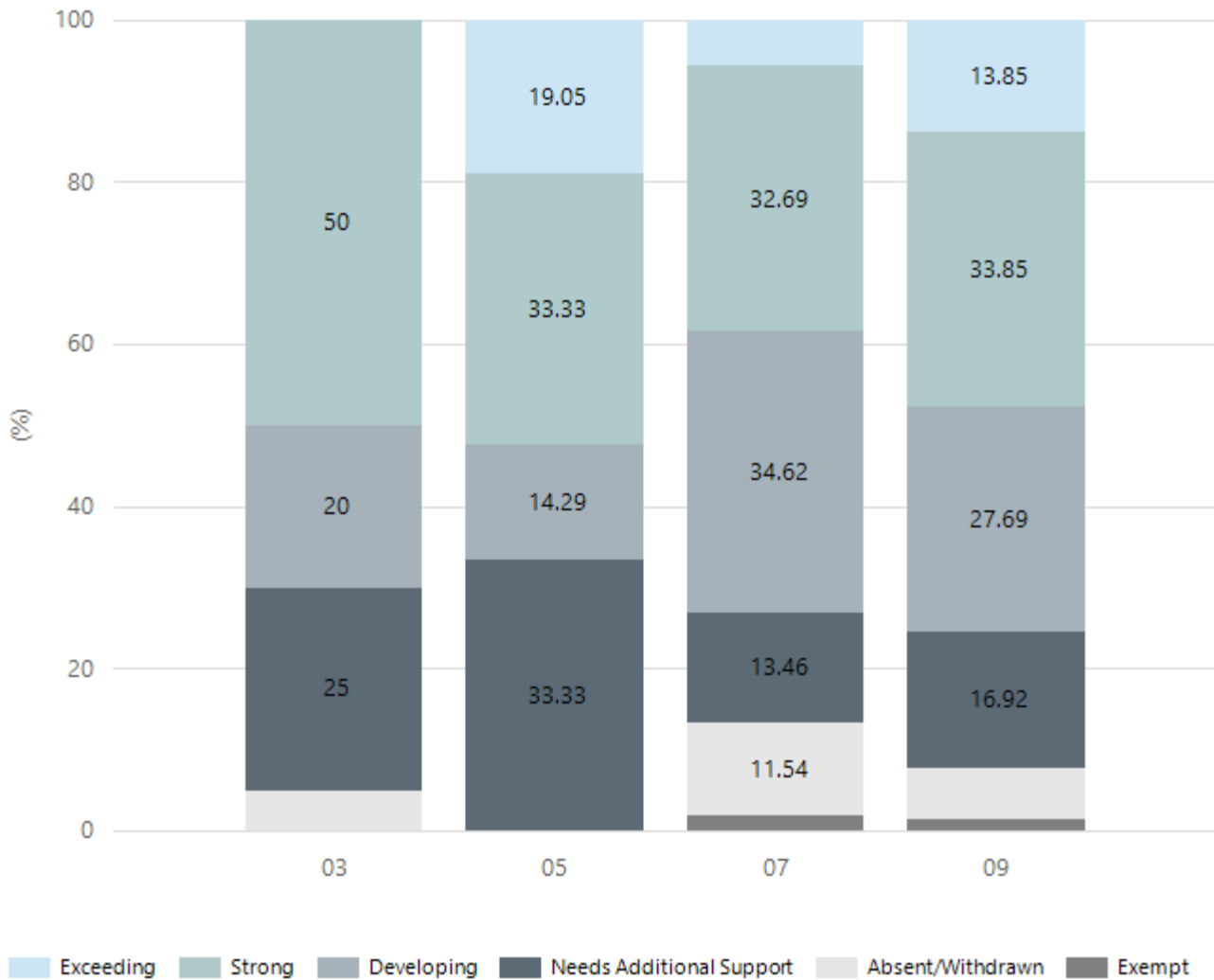
Reading



Year Level	03	05	07	09
Exceeding	2	4	3	7
Strong	7	9	20	21
Developing	6	2	13	23
Needs Additional Support	4	6	9	9
Absent/Withdrawn	1		6	4
Exempt			1	1
Total	20	21	52	65

Data Source: Department for Education Assessment Data Holdings, 2024. If there are less than 6 students who sat NAPLAN in a school, no information will be shown. If a year level has less than 6 students, that year level will not be shown in NAPLAN results.

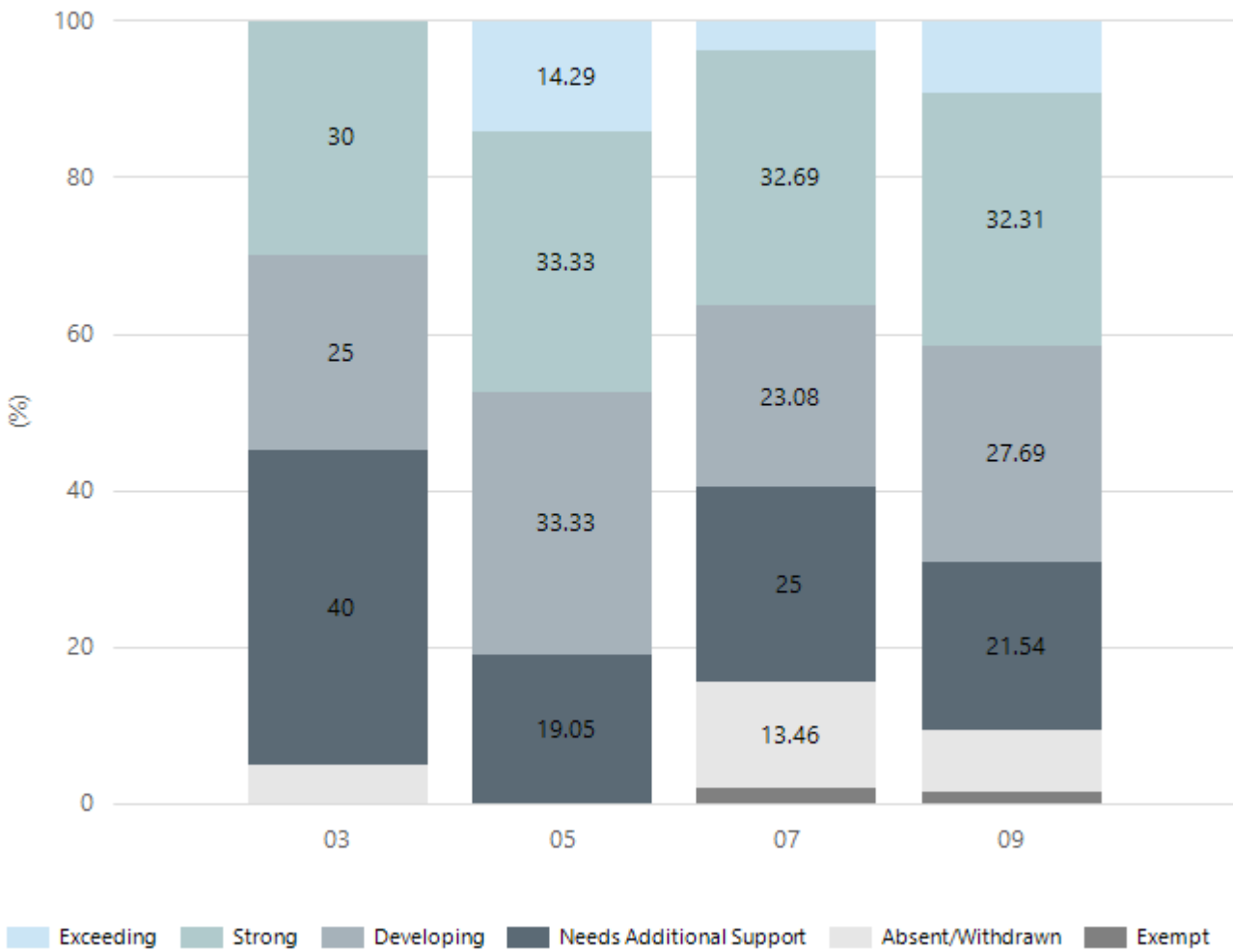
Writing



Year Level	03	05	07	09
Exceeding		4	3	9
Strong	10	7	17	22
Developing	4	3	18	18
Needs Additional Support	5	7	7	11
Absent/Withdrawn	1		6	4
Exempt			1	1
Total	20	21	52	65

Data Source: Department for Education Assessment Data Holdings, 2024. If there are less than 6 students who sat NAPLAN in a school, no information will be shown. If a year level has less than 6 students, that year level will not be shown in NAPLAN results.

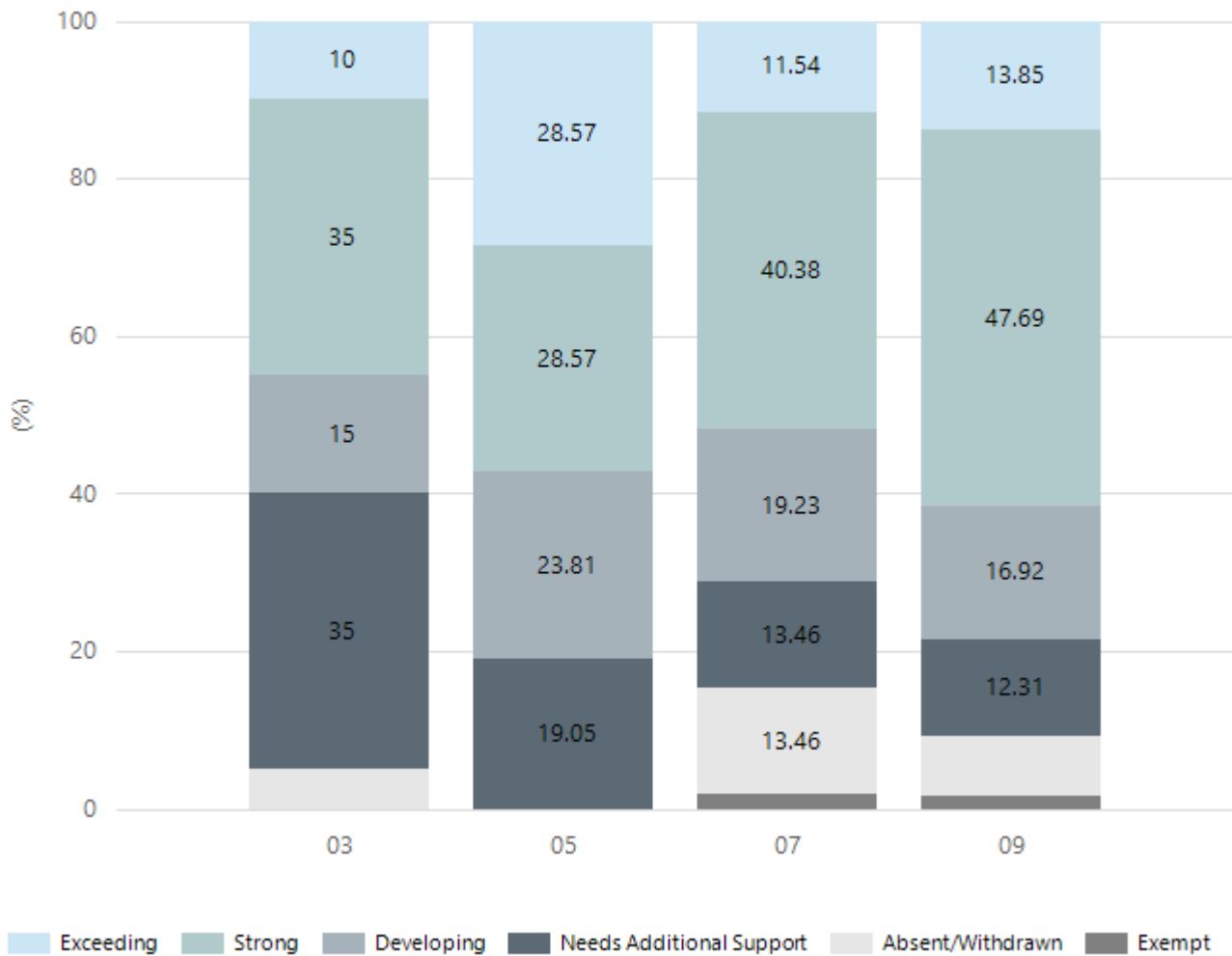
Grammar



Year Level	03	05	07	09
Exceeding		3	2	6
Strong	6	7	17	21
Developing	5	7	12	18
Needs Additional Support	8	4	13	14
Absent/Withdrawn	1		7	5
Exempt			1	1
Total	20	21	52	65

Data Source: Department for Education Assessment Data Holdings, 2024. If there are less than 6 students who sat NAPLAN in a school, no information will be shown. If a year level has less than 6 students, that year level will not be shown in NAPLAN results.

Spelling

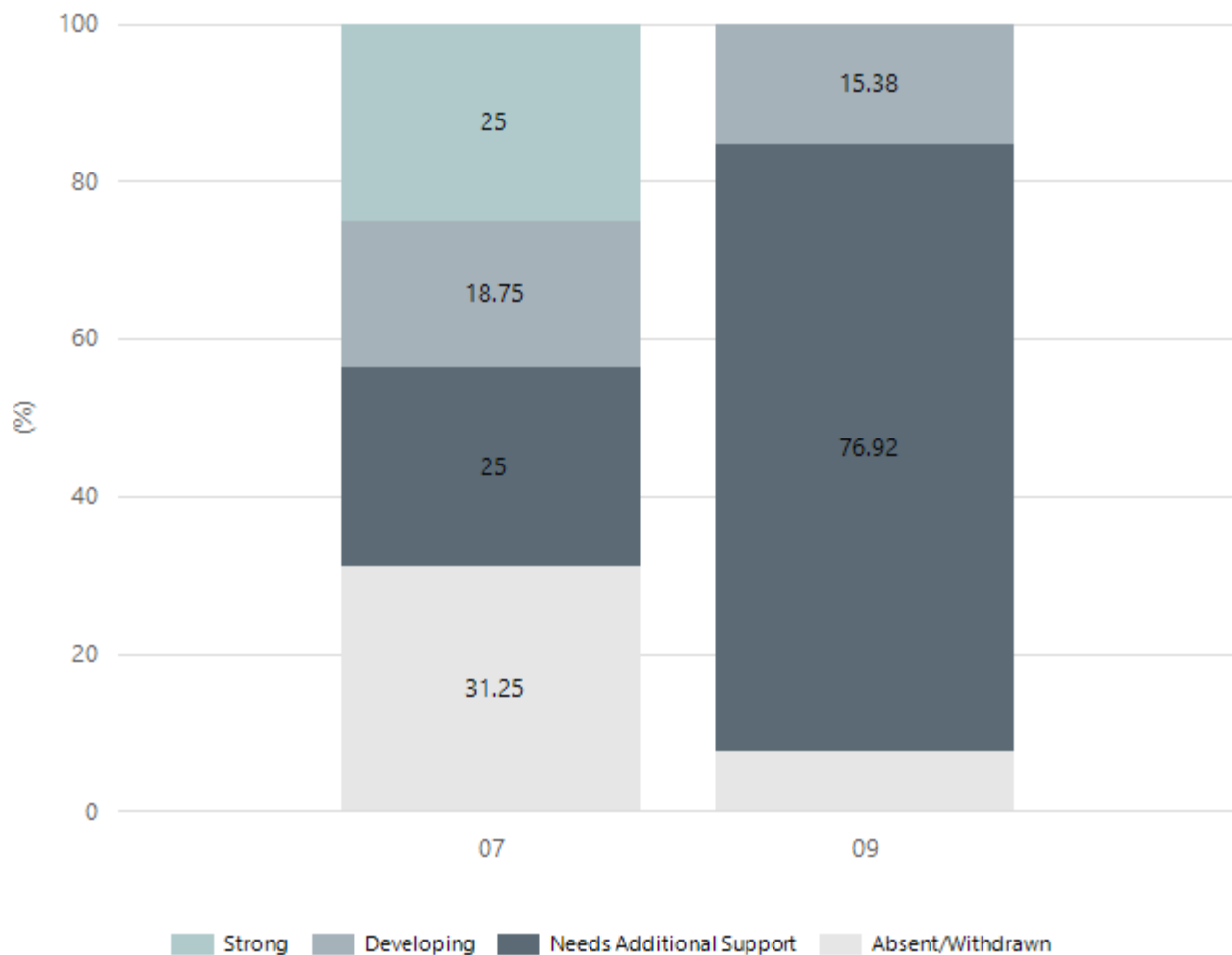


Year Level	03	05	07	09
Exceeding	2	6	6	9
Strong	7	6	21	31
Developing	3	5	10	11
Needs Additional Support	7	4	7	8
Absent/Withdrawn	1		7	5
Exempt			1	1
Total	20	21	52	65

Data Source: Department for Education Assessment Data Holdings, 2024. If there are less than 6 students who sat NAPLAN in a school, no information will be shown. If a year level has less than 6 students, that year level will not be shown in NAPLAN results.

NAPLAN Proficiency - Aboriginal Learners

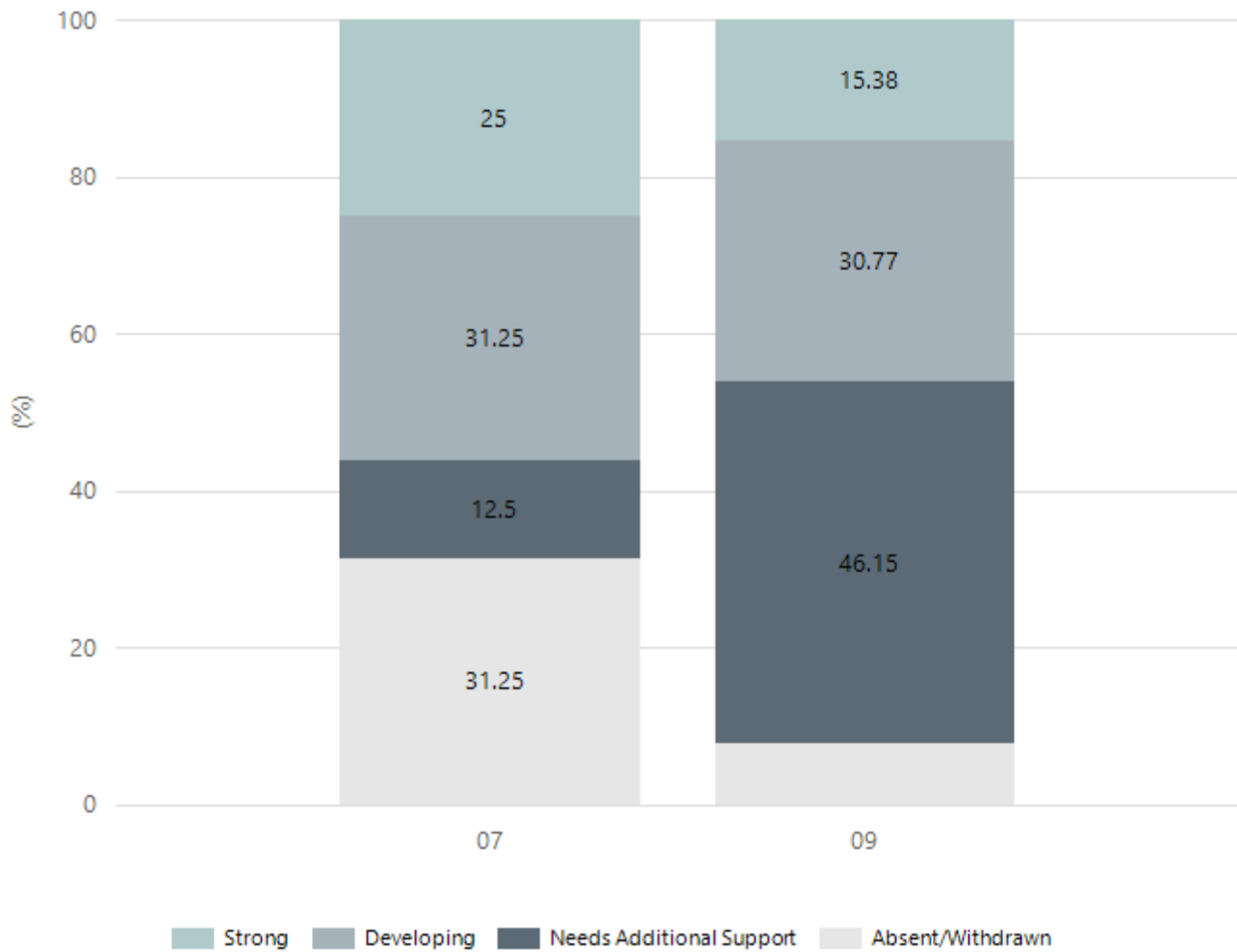
Numeracy



Year Level	07	09
Strong	4	
Developing	3	2
Needs Additional Support	4	10
Absent/Withdrawn	5	1
Total	16	13

Data Source: Department for Education Assessment Data Holdings, 2024. If there are less than 6 students who sat NAPLAN in a school, no information will be shown. If a year level has less than 6 students, that year level will not be shown in NAPLAN results. Only data for Aboriginal learners is displayed.

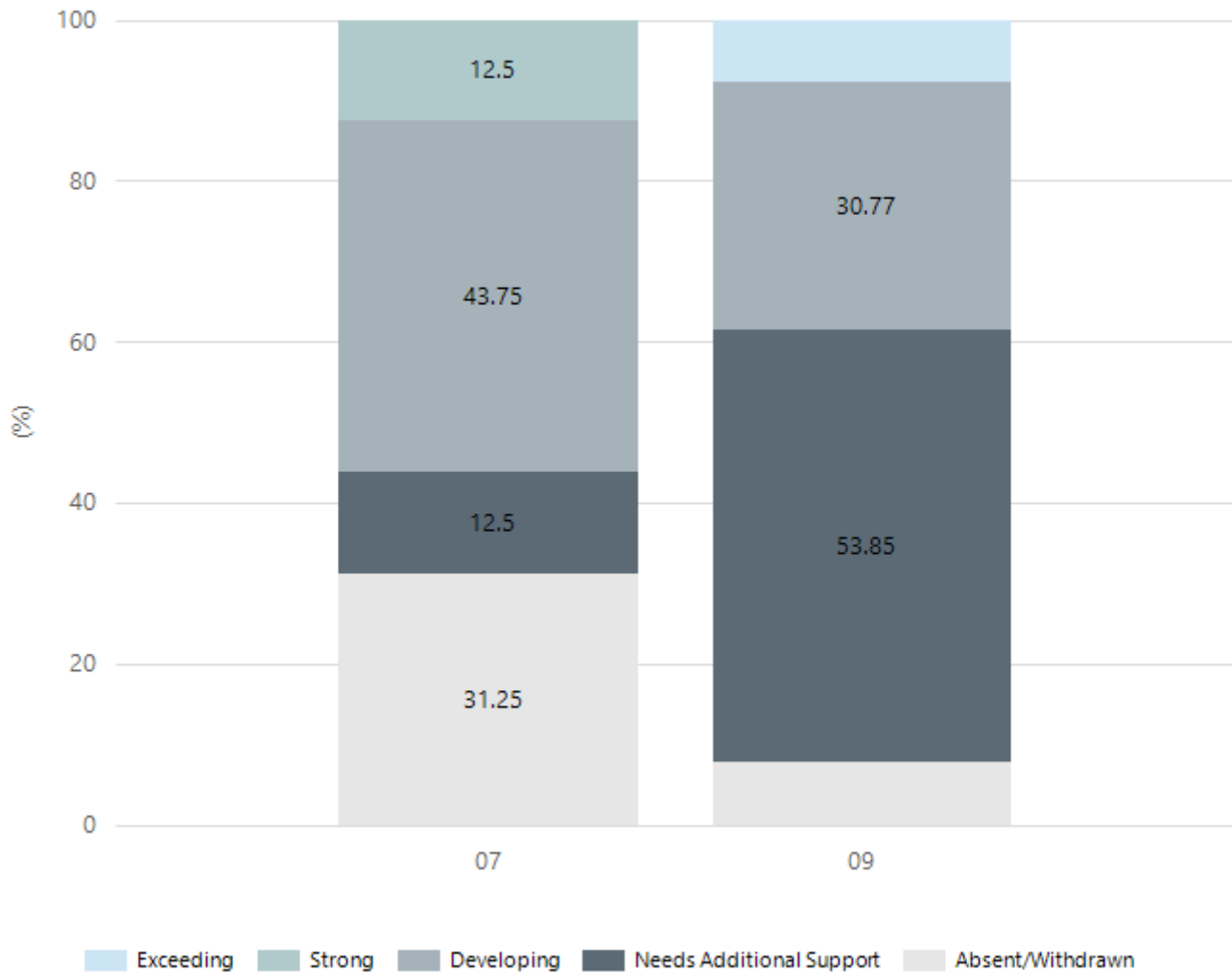
Reading



Year Level	07	09
Strong	4	2
Developing	5	4
Needs Additional Support	2	6
Absent/Withdrawn	5	1
Total	16	13

Data Source: Department for Education Assessment Data Holdings, 2024. If there are less than 6 students who sat NAPLAN in a school, no information will be shown. If a year level has less than 6 students, that year level will not be shown in NAPLAN results. Only data for Aboriginal learners is displayed.

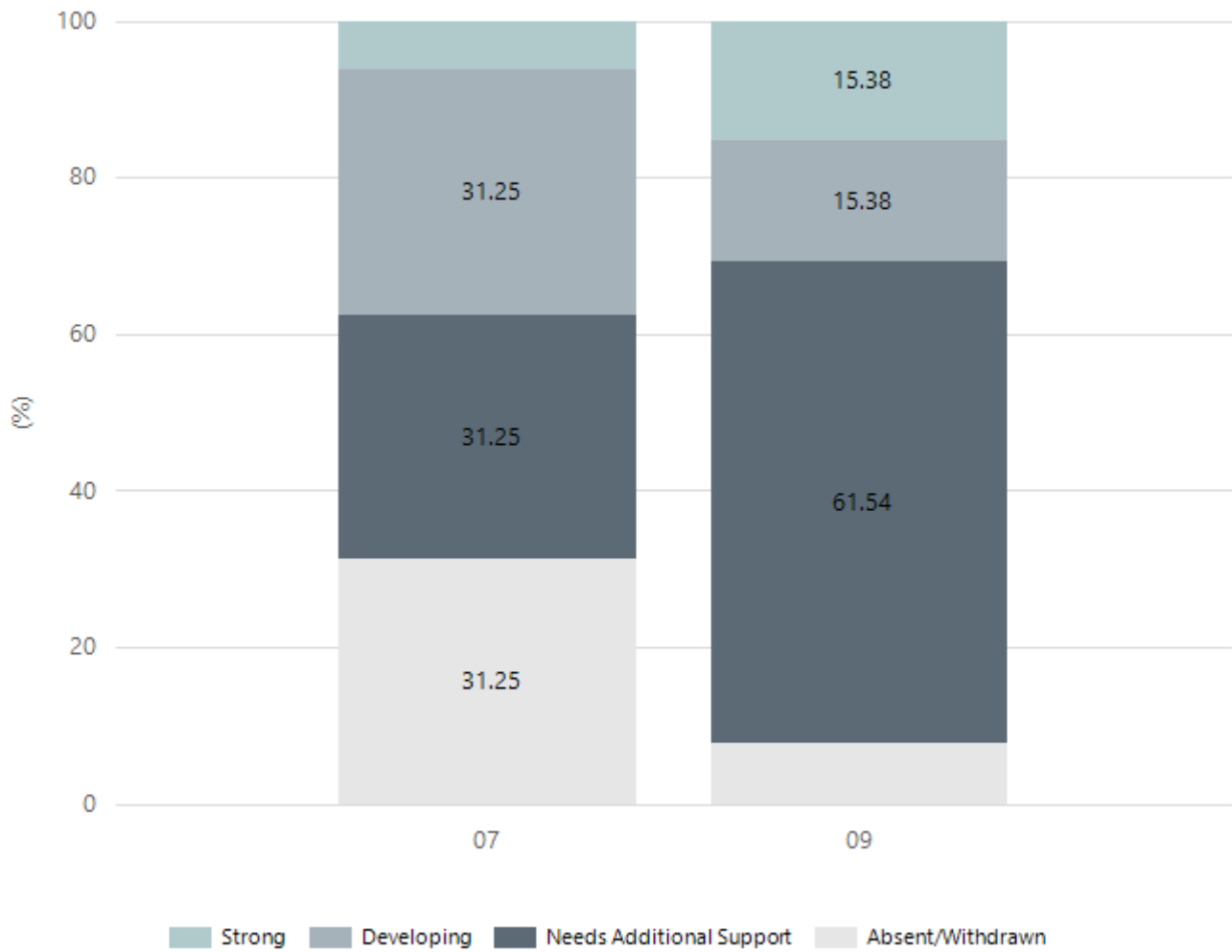
Writing



Year Level	07	09
Exceeding		1
Strong	2	
Developing	7	4
Needs Additional Support	2	7
Absent/Withdrawn	5	1
Total	16	13

Data Source: Department for Education Assessment Data Holdings, 2024. If there are less than 6 students who sat NAPLAN in a school, no information will be shown. If a year level has less than 6 students, that year level will not be shown in NAPLAN results. Only data for Aboriginal learners is displayed.

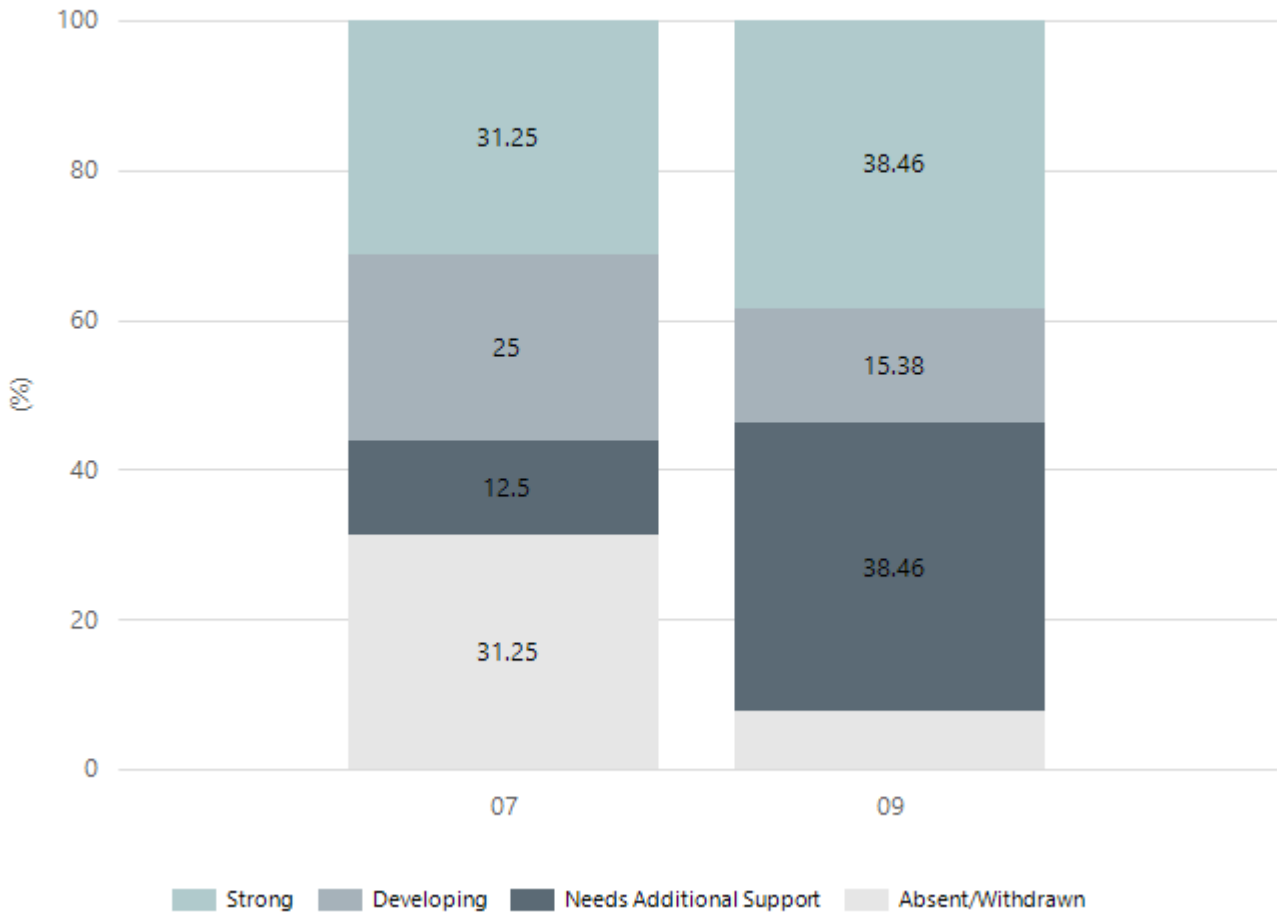
Grammar



Year Level	07	09
Strong	1	2
Developing	5	2
Needs Additional Support	5	8
Absent/Withdrawn	5	1
Total	16	13

Data Source: Department for Education Assessment Data Holdings, 2024. If there are less than 6 students who sat NAPLAN in a school, no information will be shown. If a year level has less than 6 students, that year level will not be shown in NAPLAN results. Only data for Aboriginal learners is displayed.

Spelling



Year Level	07	09
Strong	5	5
Developing	4	2
Needs Additional Support	2	5
Absent/Withdrawn	5	1
Total	16	13

Data Source: Department for Education Assessment Data Holdings, 2024. If there are less than 6 students who sat NAPLAN in a school, no information will be shown. If a year level has less than 6 students, that year level will not be shown in NAPLAN results. Only data for Aboriginal learners is displayed.

South Australian Certificate of Education - SACE

SACE Stage 2 Grades - Percentage of grades that are C- or above for attempted SACE subjects (SEA)

2021	2022	2023	2024
99%	98%	96%	

Data Source: SACE School Data Reports, as of February 2024 for 2021-2023. 2024 SACE results are School supplied data. When there are less than six students, no data is supplied. Due to rounding of percentages, total results may not add up to 100%.

SACE Stage 2 Grade Distribution

Grade	2021	2022	2023	2024
A+	1%	3%	5%	1%
A	6%	5%	8%	7%
A-	18%	10%	11%	14%
B+	12%	14%	9%	14%
B	24%	14%	8%	18%
B-	12%	15%	13%	12%
C+	9%	14%	16%	13%
C	12%	19%	24%	15%
C-	5%	4%	3%	3%
D+		1%	2%	2%
D		1%	1%	.38%
D-		1%	1%	
E+	1%			.38%

Data Source: SACE School Data Reports, as of February 2024 for 2021-2023. 2024 SACE results are School supplied data. When there are less than six students, no data is supplied. Due to rounding of percentages, total results may not add up to 100%.

SACE Completion - Percentage of completers out of those students who had the potential to complete their SACE in October that year

2021	2022	2023	2024
100%	100%	100%	100%

Data Source: SACE School Data Reports, as of February 2024 for 2021-2023. 2024 SACE results are School supplied data. When there are less than six students, no data is supplied. Due to rounding of percentages, total results may not add up to 100%.

Year 12 Students undertaking Vocational or Trade Training (VET)

	2022	2023	2024
Percentage of Year 12 students undertaking Vocational Training or Trade Training	20	23	17
Percentage of Year 12 students attaining a Year 12 certificate or equivalent VET qualification	100	100	100

Data Source: School supplied data

Preschool Attendance

	Term 1	Term 2	Term 3	Term 4
2021 centre	75.3%	80.4%	65.7%	69%
2022 centre	82.1%	79%	68.4%	64.8%
2023 centre	78.2%	81%	79.5%	81.2%
2024 centre	83.4%	74.19%	74.9%	77.94%

Based on attendances recorded in the two-week reference period each term. Data for eligible enrolments as described in the department's Enrolment policy. Attendance rates may differ to previous reporting with the transfer from calculations based on deemed attendance to actual attendance using booked hours divided by attended hours. Data Source: Department for Education Attendance Data, Semester 1 Report 2024. A blank cell indicates there were no students enrolled.

School Attendance

Year Level	2022	2023	2024
Reception	74.4%	79.2%	79.8%
Year 01	76.9%	78.3%	83.5%
Year 02	73.6%	81.4%	78.4%
Year 03	75.8%	71.8%	74.4%
Year 04	66.6%	83.2%	80.7%
Year 05	67.4%	77.5%	80.9%
Year 06	78.4%	86.4%	78.3%
Year 07	80.6%	74.5%	76.2%
Year 08	69.7%	78.0%	68.6%
Year 09	74.0%	72.2%	77.1%
Year 10	78.1%	71.9%	64.5%
Year 11	84.6%	78.1%	73.8%
Year 12	77.4%	78.6%	71.5%
Secondary Other	88.4%	89.4%	86.6%
Total	76.8%	77.1%	74.3%

Data Source: Department for Education Attendance Data, Semester 1 Report 2024. A blank cell indicates there were no students enrolled. 'Primary Other' includes students enrolled in specialised education options. 'Secondary Other' includes students who have already spent a year at Year 12 and elected to undertake further study at Year 12.

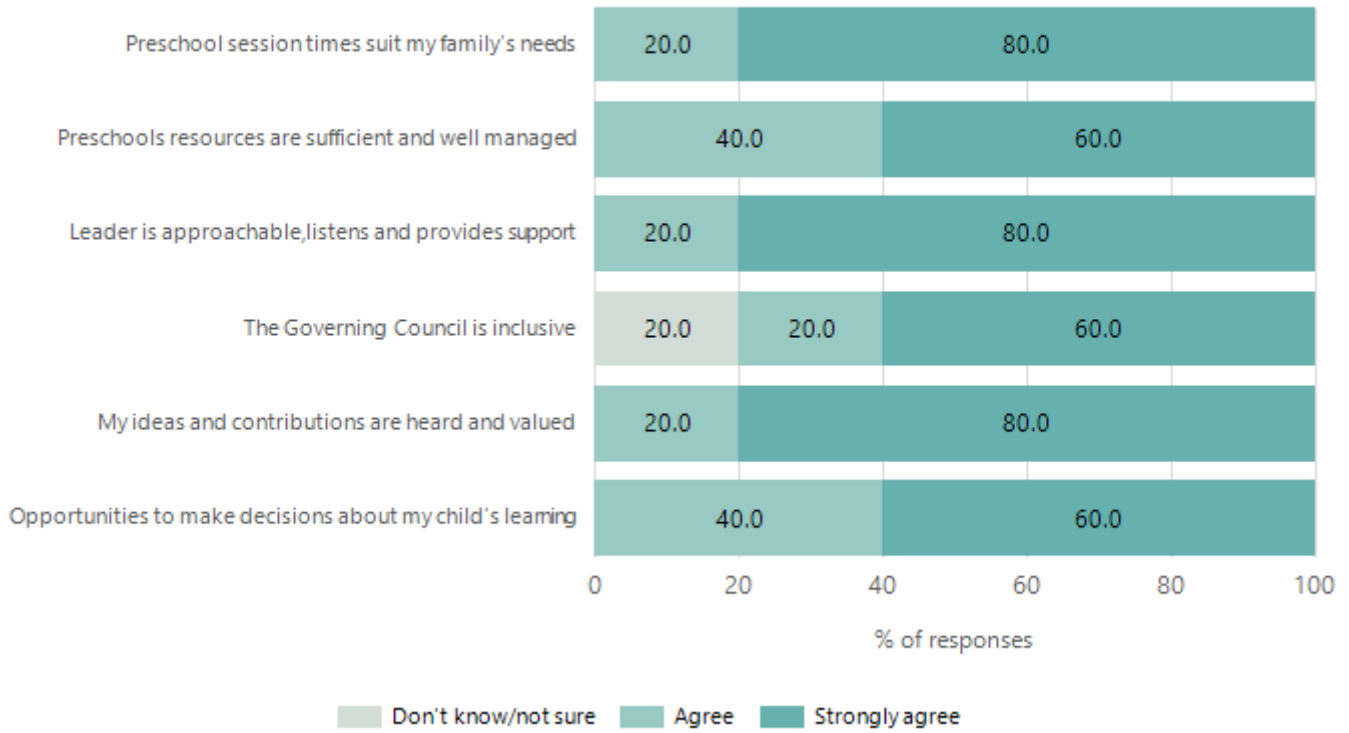
Attendance Comment

In South Australia, preschool attendance is not compulsory, but it is strongly encouraged. Preschool gives children the best opportunity to develop skills, which prepare them for School. These benefits include establishing positive routines and habits, friendships and connections as well as developing communication, problem-solving and creative skills. All children are entitled to access a preschool program over 4 terms the year before they start School.

In South Australia, all children and young people must be in School from 6 years to 16 years old. They must attend a government or non-government school full time. From age 16 to 17 however, young people must attend School or an approved learning program (such as an apprenticeship, traineeship, accredited course or university). Schools and parents must encourage and support students to come to School every day. Parents and caregivers must make sure their child is enrolled in a school, and attends School all day and everyday it is open, unless a child is sick or has an approved exemption. Teachers and leaders actively follow up when a student misses School, including recording all absences and non-attendance. All schools in South Australia have local attendance procedures governed under the Education and Children's Services Regulations 2020.

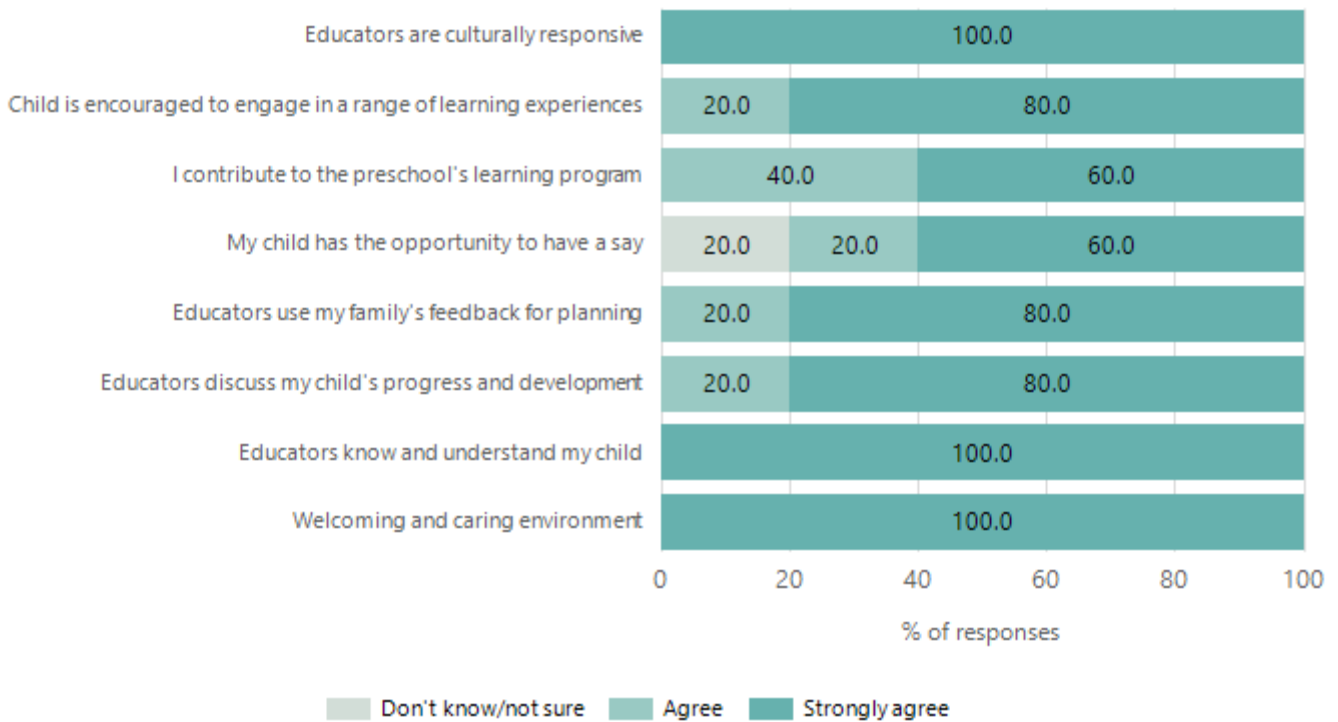
Preschool Family Opinion Survey

Governance, Leadership and Management



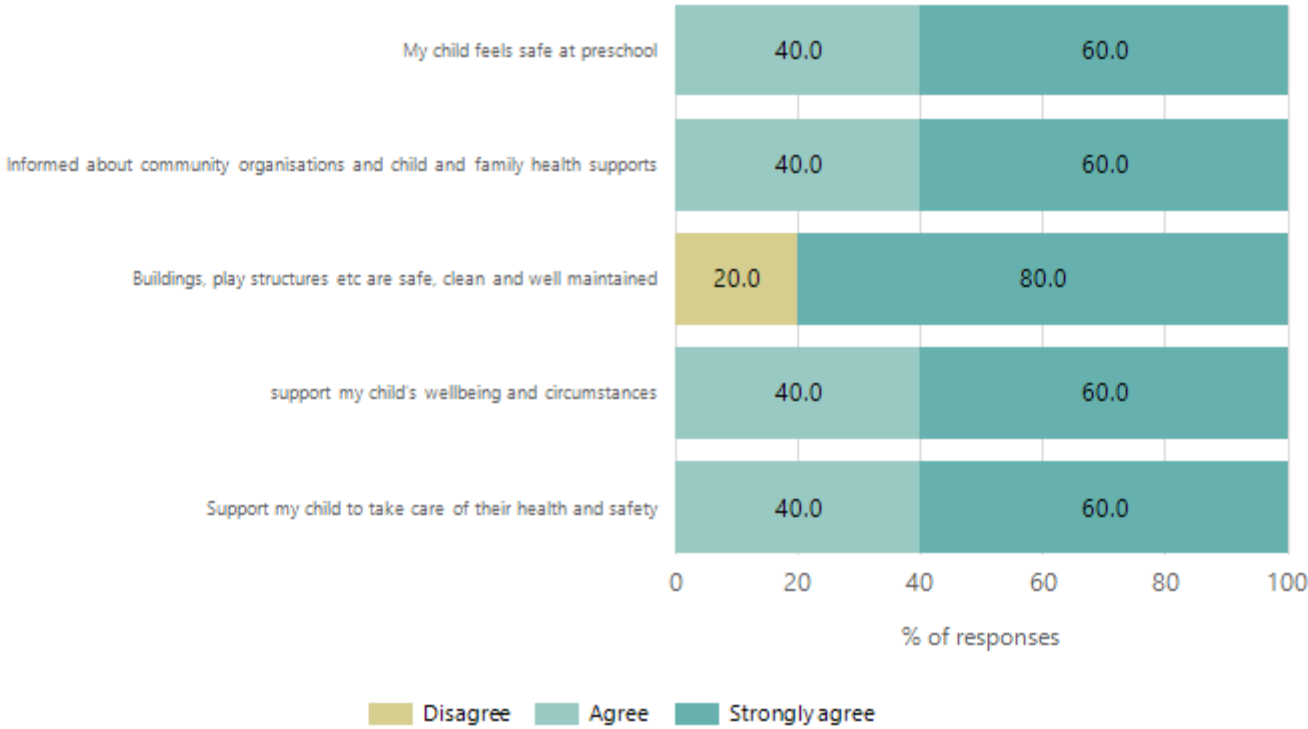
Data Source: 2024 Department for Education Preschool Family Opinions Survey, Term 3 2024.

Quality of Teaching and Learning



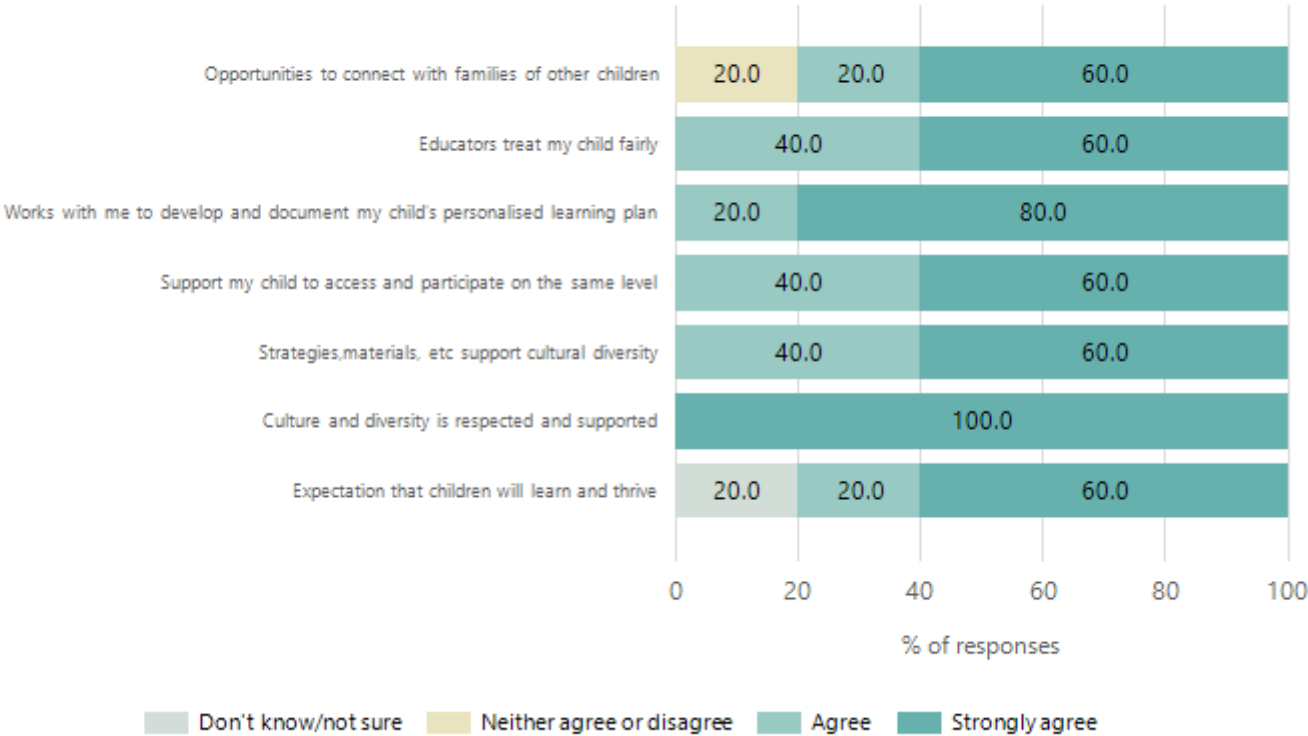
Data Source: 2024 Department for Education Preschool Family Opinions Survey, Term 3 2024.

Safety, Health and Wellbeing



Data Source: 2024 Department for Education Preschool Family Opinions Survey, Term 3 2024.

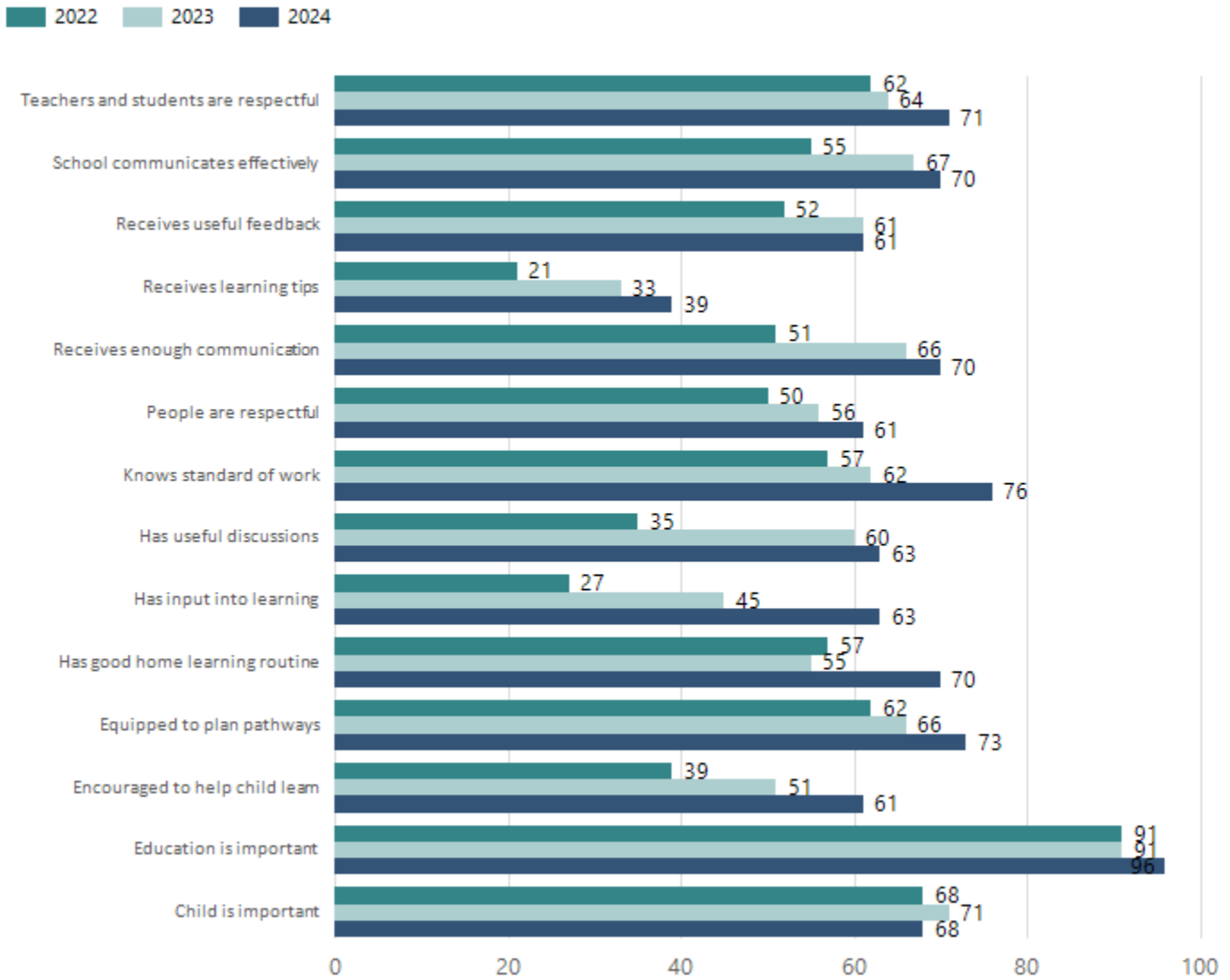
Support and Inclusion



Data Source: 2024 Department for Education Preschool Family Opinions Survey, Term 3 2024.

School Parent Opinion Survey Results

Proportion of agree/strongly agree response(%)



Data Source: 2024 Department for Education Parent Opinions Survey, Term 3 2024.

Destination Schools

Feeder Schools (Site number - Name)	2022	2023	2024
Unknown	6.7%		
0665 - Hillcrest Primary School	6.7%	6.5%	6.7%
0898 - Klemzig Primary School		3.9%	5.0%
0906 - Avenues College	35.6%	61.0%	43.3%
1028 - Charles Campbell College			3.3%
8364 - St Paul's College			6.7%
9031 - St Martin's Catholic Primary School	4.4%		5.0%
9088 - St Pius X School			3.3%
9999 - Unknown	37.8%	13.0%	20.0%

Note: The data is collected in term 3. It does not reflect actual schools enrolled in by existing preschool children. A blank cell indicates there was no data for students enrolled.

Data Source: Department for Education Destination Data Report, 2024.

Intended Destination

Leave Reason	Number	%
NG - ATTENDING NON-GOV SCHOOL IN SA	8	9.0%
NT - LEFT SA FOR NT	3	3.0%
SM - SEEKING EMPLOYMENT IN SA	19	21.0%
TG - TRANSFERRED TO SA GOVERNMENT SCHOOL	54	60.0%

Data Source: Department for Education Destination Data Report, 2024. Data extract term 3 2024. Data shows recorded destinations for students that left the School in the previous year. Data is uploaded by schools in term 3 and may not reflect final or total figures at time of report creation.

Highest Qualifications held by the teaching workforce and workforce composition

All teachers at this School are qualified and registered with the SA Teachers Registration Board.

Qualification Level	Number of Qualifications
Bachelor's degrees or Diplomas	37
Postgraduate Qualifications	35

Data Source: Data extracted from Mandatory Workforce Information Collections as on the last pay date of June 2024. As self-reported by staff in the system.

Please note: Data includes staff who are Actively employed and on extended paid leave. Please note only the highest qualification of the Teaching staff is reported. Excludes any number of other certifications earned.

Workforce composition including indigenous staff

	Teaching Staff		Non-Teaching Staff	
	Indigenous	Non-Indigenous	Indigenous	Non-Indigenous
Full-Time Equivalents	1.0	64.2	3.0	31.7
Persons	1.0	74.0	3.0	45.0

Data Source: Data extracted from Mandatory Workforce Information Collection as on the last pay date of June 2024.

Please note: Data includes staff who are actively employed and on extended paid leave. "Indigenous category" is self-reported by staff in the system.

Financial Statement

Funding Source	Amount
Grants: State	\$1394.98
Grants: Commonwealth	\$9150.00
Parent Contributions	\$253732.54
Fund Raising	\$8206.17
Other	\$211827.84

Data Source: School supplied data.