



2023 annual report to the Community

Oakbank School

Oakbank School number: 0762

Partnership: Heysen



School principal:

Lee Knight

L Knight

Date of endorsement:

14/03/2024



Context Statement

Oakbank School caters for students from R-12. At the time of this report, the enrolment in 2023 is 340. Oakbank School is classified as Category 6 on the Department for Education Index of Educational Disadvantage. At the time of this report, the school population includes 5% Aboriginal students, 8% students with disabilities, 2% children/young people in care. Further information about the school is available on the school's website (including its context statement), as well as the My School website.

2023 Governing Council - Chairperson Report

Oakbank School continues to take pride and celebrate the diversity and success of the student community, welcoming students from all backgrounds and abilities, encouraging them to grow academically and be the best they can be, working within our values of Connection, Respect and Responsibility and the Site Improvement Plan.

Along with many successes, the year has presented its challenges, delays in construction and improvements, balancing budgets or coordinating curriculums. However, our extremely committed and dedicated management, teaching and support staff, led by Principal Lee Knight, have seen the school continue to flourish and grow.

An adept and committed Governing Council have supported and contributed to that success and in 2023 has had the benefit of, each parent, student, staff and community position filled.

Through the diligent attention and work of school management and Finance Advisory Committee the school continues to be in a good financial position.

It has been a privilege to support and work with Principal Lee Knight and all engaged in the education and support of our children at Oakbank School, the future looks truly positive.

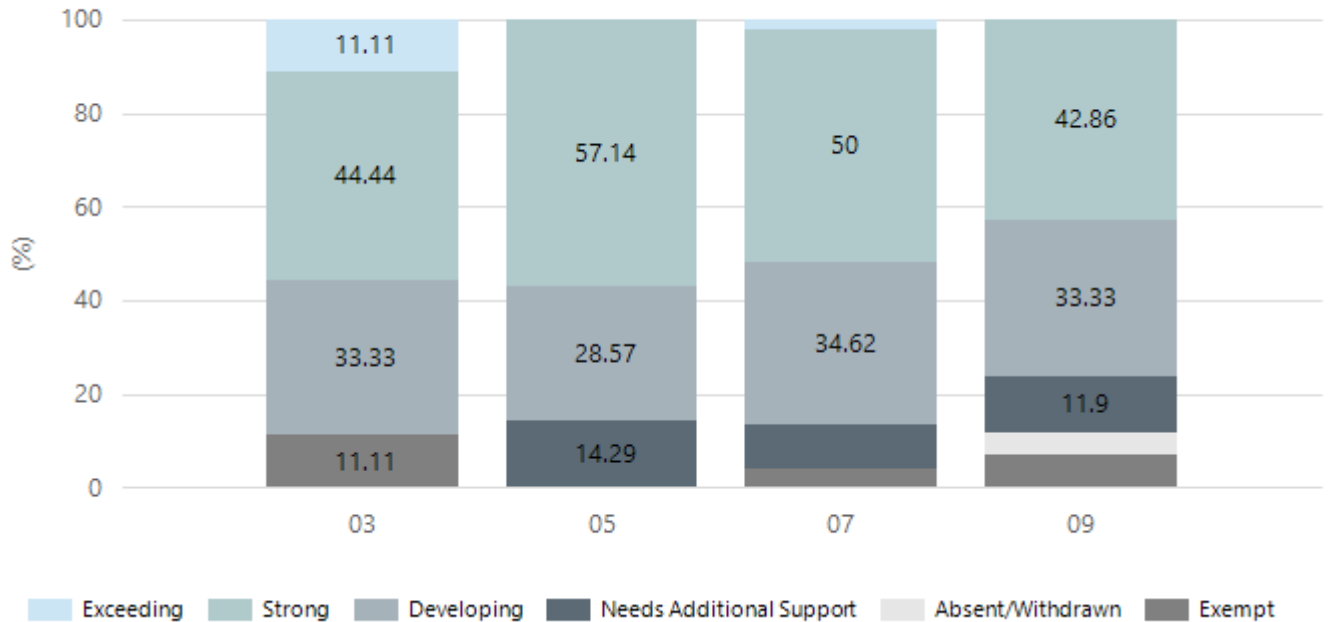
Alistair MacPherson, Governing Council Chairperson

Performance Summary

NAPLAN Proficiency

In 2023, the Australian Curriculum, Assessment and Reporting Authority (ACARA) - a Commonwealth Independent statutory authority - announced changes to NAPLAN performance reporting. This new way of reporting by ACARA that NAPLAN results from 2023 will not be comparable to previous years. The new approach replaces the previous numerical NAPLAN bands and the national minimum standard.

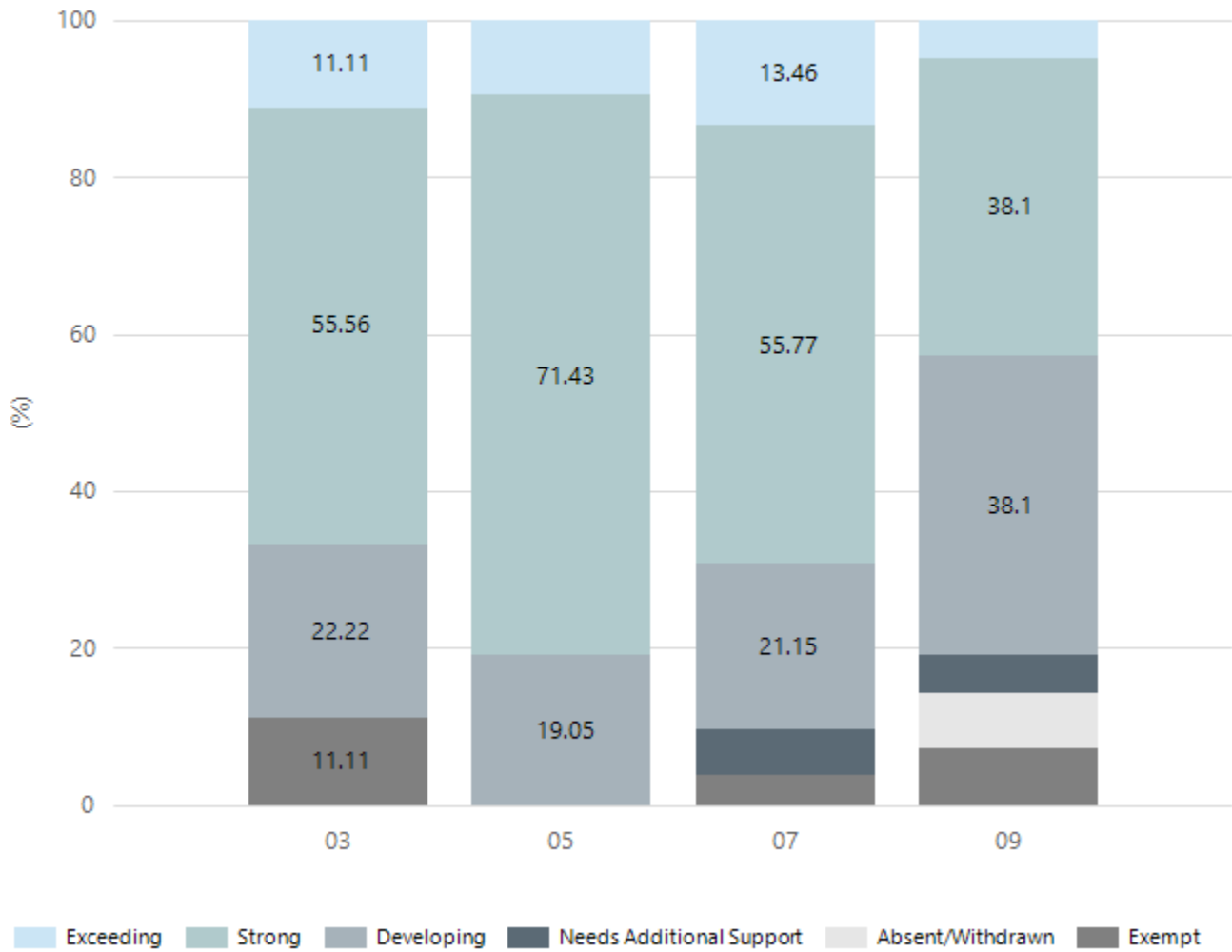
Numeracy



Year Level	03	05	07	09
Exceeding	1		1	
Strong	4	12	26	18
Developing	3	6	18	14
Needs Additional Support		3	5	5
Absent/Withdrawn				2
Exempt	1		2	3
Total	9	21	52	42

Data Source: Department for Education Assessment Data Holdings, 2023. When there are less than six students in a cohort, no data is supplied.

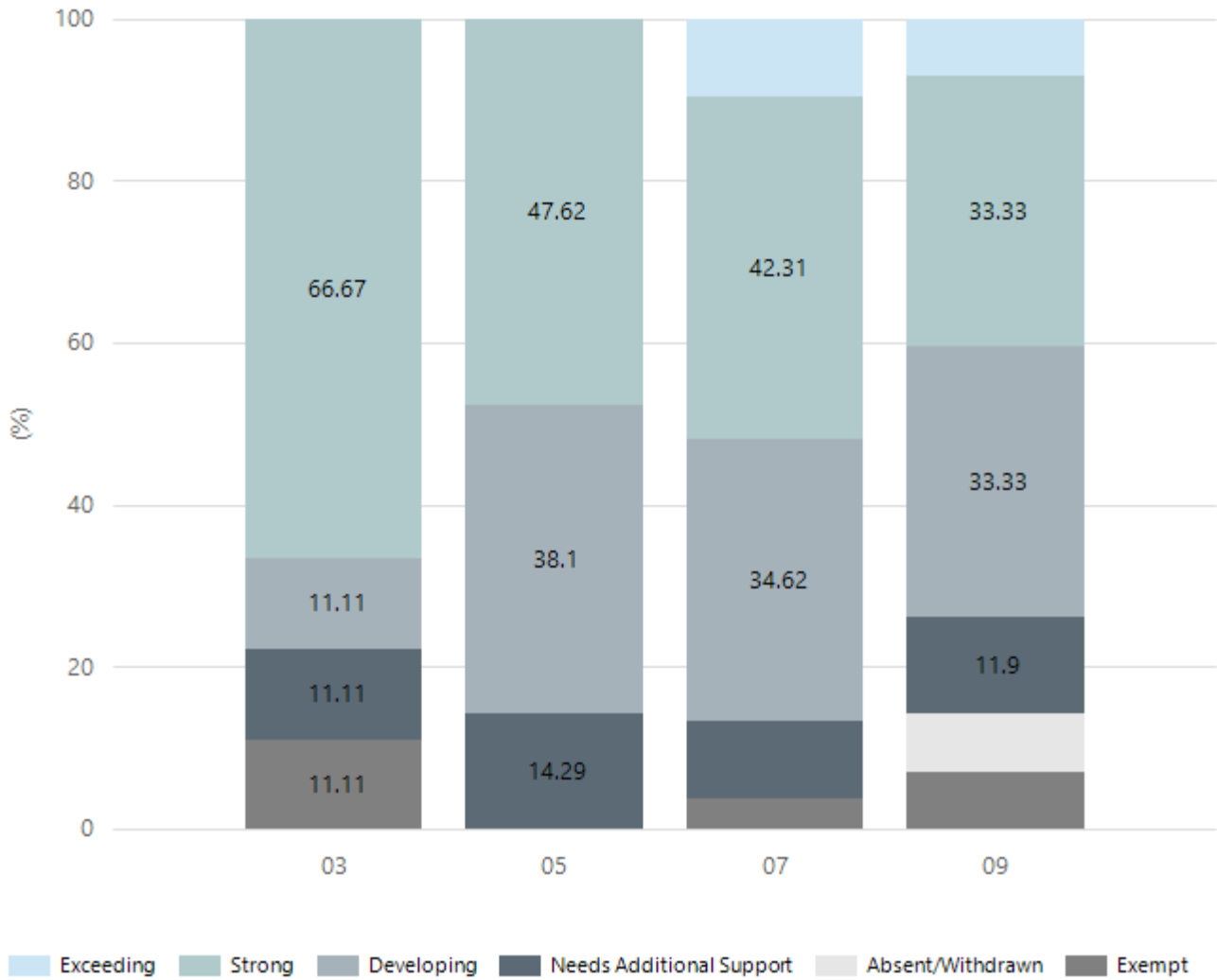
Reading



Year Level	03	05	07	09
Exceeding	1	2	7	2
Strong	5	15	29	16
Developing	2	4	11	16
Needs Additional Support			3	2
Absent/Withdrawn				3
Exempt	1		2	3
Total	9	21	52	42

Data Source: Department for Education Assessment Data Holdings, 2023. When there are less than six students in a cohort, no data is supplied.

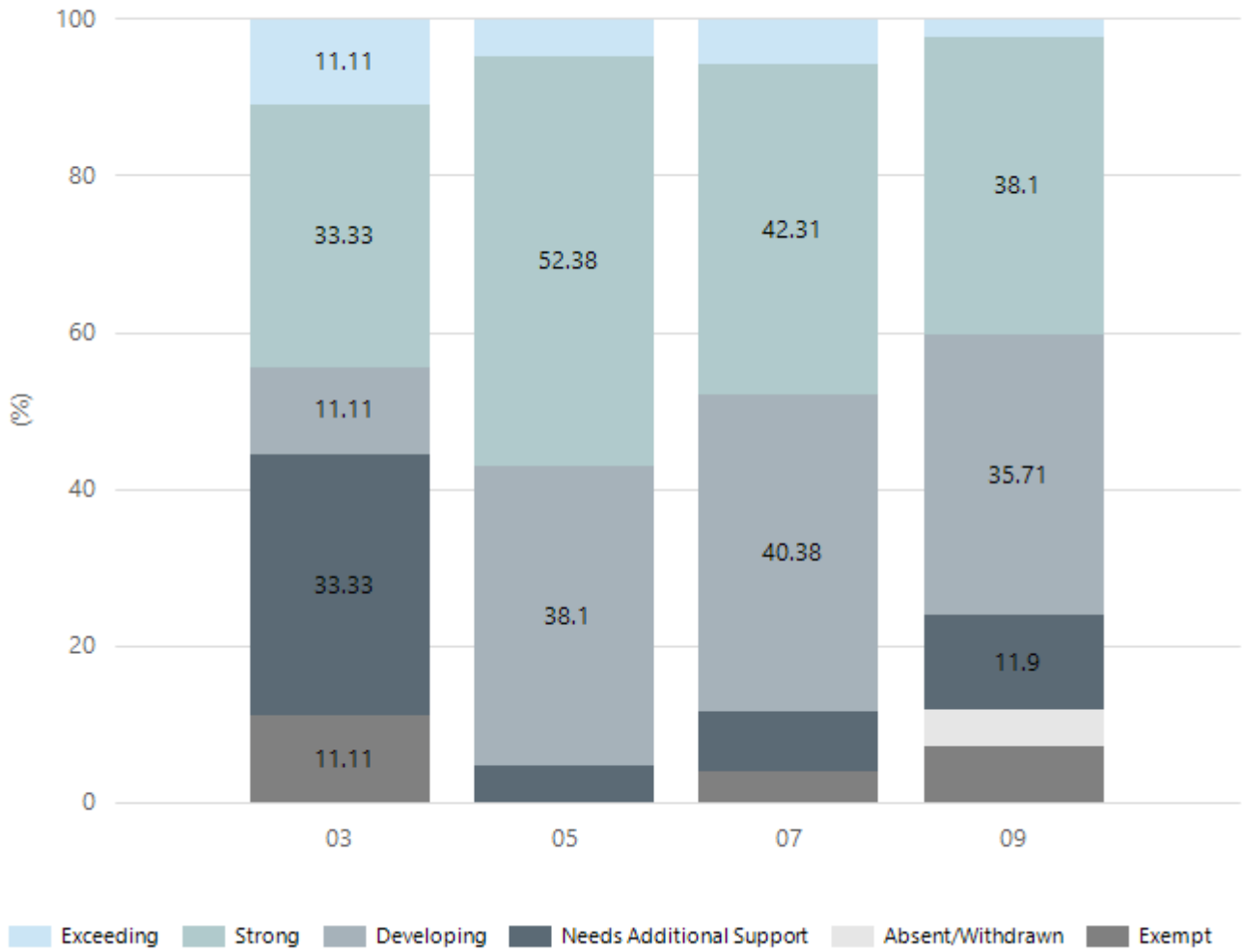
Writing



Year Level	03	05	07	09
Exceeding			5	3
Strong	6	10	22	14
Developing	1	8	18	14
Needs Additional Support	1	3	5	5
Absent/Withdrawn				3
Exempt	1		2	3
Total	9	21	52	42

Data Source: Department for Education Assessment Data Holdings, 2023. When there are less than six students in a cohort, no data is supplied.

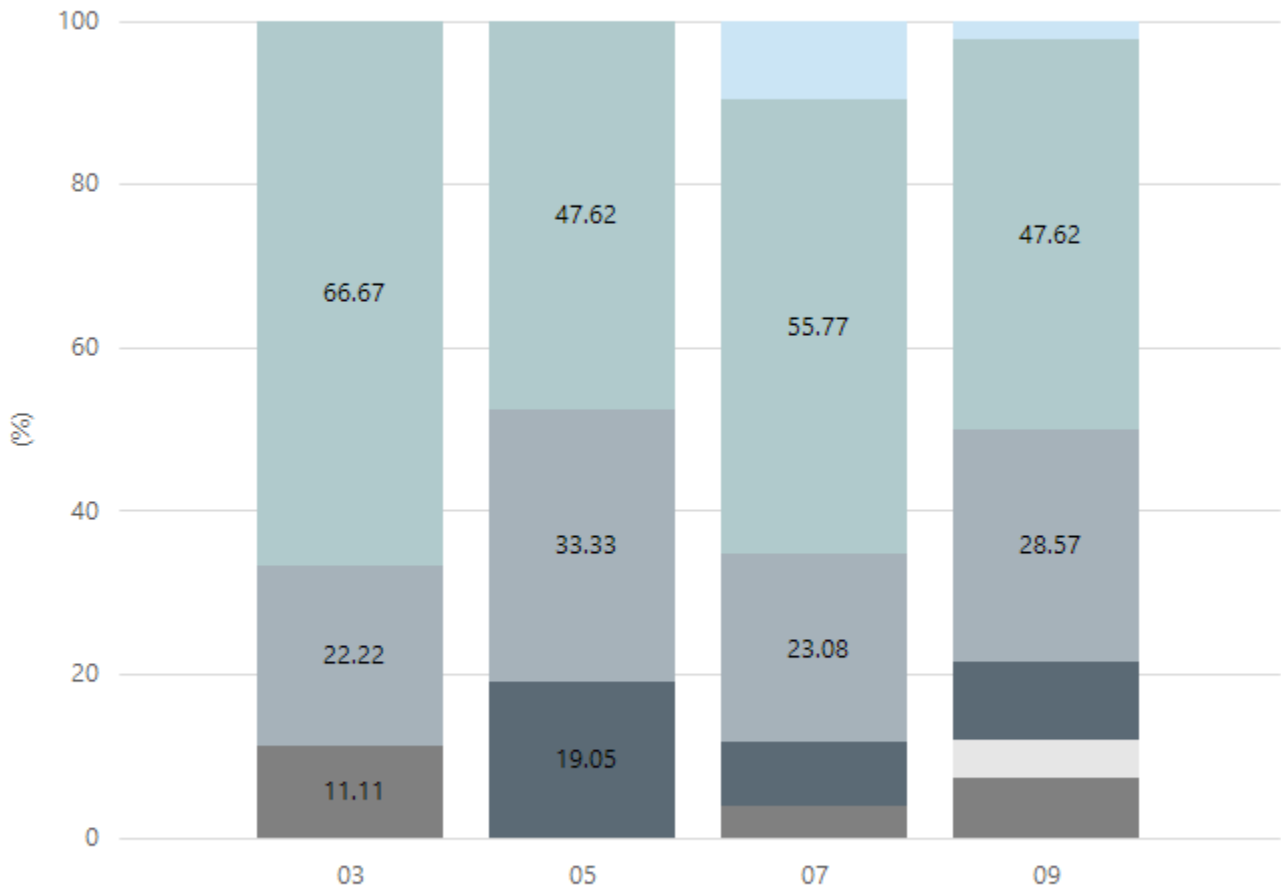
Grammar



Year Level	03	05	07	09
Exceeding	1	1	3	1
Strong	3	11	22	16
Developing	1	8	21	15
Needs Additional Support	3	1	4	5
Absent/Withdrawn				2
Exempt	1		2	3
Total	9	21	52	42

Data Source: Department for Education Assessment Data Holdings, 2023. When there are less than six students in a cohort, no data is supplied.

Spelling



■ Exceeding
 ■ Strong
 ■ Developing
 ■ Needs Additional Support
 ■ Absent/Withdrawn
 ■ Exempt

Year Level	03	05	07	09
Exceeding			5	1
Strong	6	10	29	20
Developing	2	7	12	12
Needs Additional Support		4	4	4
Absent/Withdrawn				2
Exempt	1		2	3
Total	9	21	52	42

Data Source: Department for Education Assessment Data Holdings, 2023. When there are less than six students in a cohort, no data is supplied.

South Australian Certificate of Education - SACE

SACE Stage 2 Grades - Percentage of grades that are C- or above for attempted SACE subjects (SEA)

2020	2021	2022	2023
93%	91%	100%	95%

Data Source: SACE School Data Reports, as of February 2023 for 2020-2022. 2023 SACE results are School supplied data. When there are less than six students, no data is supplied. Due to rounding of percentages, total results may not add up to 100%.

SACE Stage 2 Grade Distribution

Grade	2020	2021	2022	2023
A+	-	1%	-	1%
A	2%	6%	5%	12%
A-	10%	13%	9%	7%
B+	7%	9%	23%	15%
B	12%	9%	12%	8%
B-	23%	15%	17%	15%
C+	19%	10%	14%	13%
C	15%	22%	17%	19%
C-	5%	6%	3%	5%
D+	5%	4%	-	1%
D	-	1%	-	1%
D-	2%	1%	-	2%
E	-	1%	-	-

Data Source: SACE School Data Reports, as of February 2023 for 2020-2022. 2023 SACE results are School supplied data. When there are less than six students, no data is supplied. Due to rounding of percentages, total results may not add up to 100%.

SACE Completion - Percentage of completers out of those students who had the potential to complete their SACE in October that year

2020	2021	2022	2023
95%	80%	94%	89.5%

Data Source: SACE School Data Reports, as of February 2023 for 2020-2022. 2023 SACE results are School supplied data. When there are less than six students, no data is supplied. Due to rounding of percentages, total results may not add up to 100%.

Year 12 Students undertaking Vocational or Trade Training (VET)

	2021	2022	2023
Percentage of Year 12 students undertaking Vocational Training or Trade Training	58%	59%	41%
Percentage of Year 12 students attaining a Year 12 certificate or equivalent VET qualification	-	-	100%

Data Source: School supplied data

School Attendance

Year Level	2021	2022	2023
Reception	89.6%	88.3%	84.4%
Year 01	89.0%	88.0%	93.2%
Year 02	93.3%	86.6%	86.3%
Year 03	94.2%	82.0%	86.2%
Year 04	94.6%	89.5%	82.8%
Year 05	92.4%	90.5%	90.8%
Year 06	92.5%	87.0%	86.2%
Year 07	89.0%	83.3%	89.4%
Year 08	86.8%	79.2%	88.7%
Year 09	85.7%	74.3%	85.2%
Year 10	85.0%	75.0%	83.1%
Year 11	85.2%	81.6%	76.7%
Year 12	83.1%	86.4%	85.5%
Total	89.3%	84.0%	86.0%

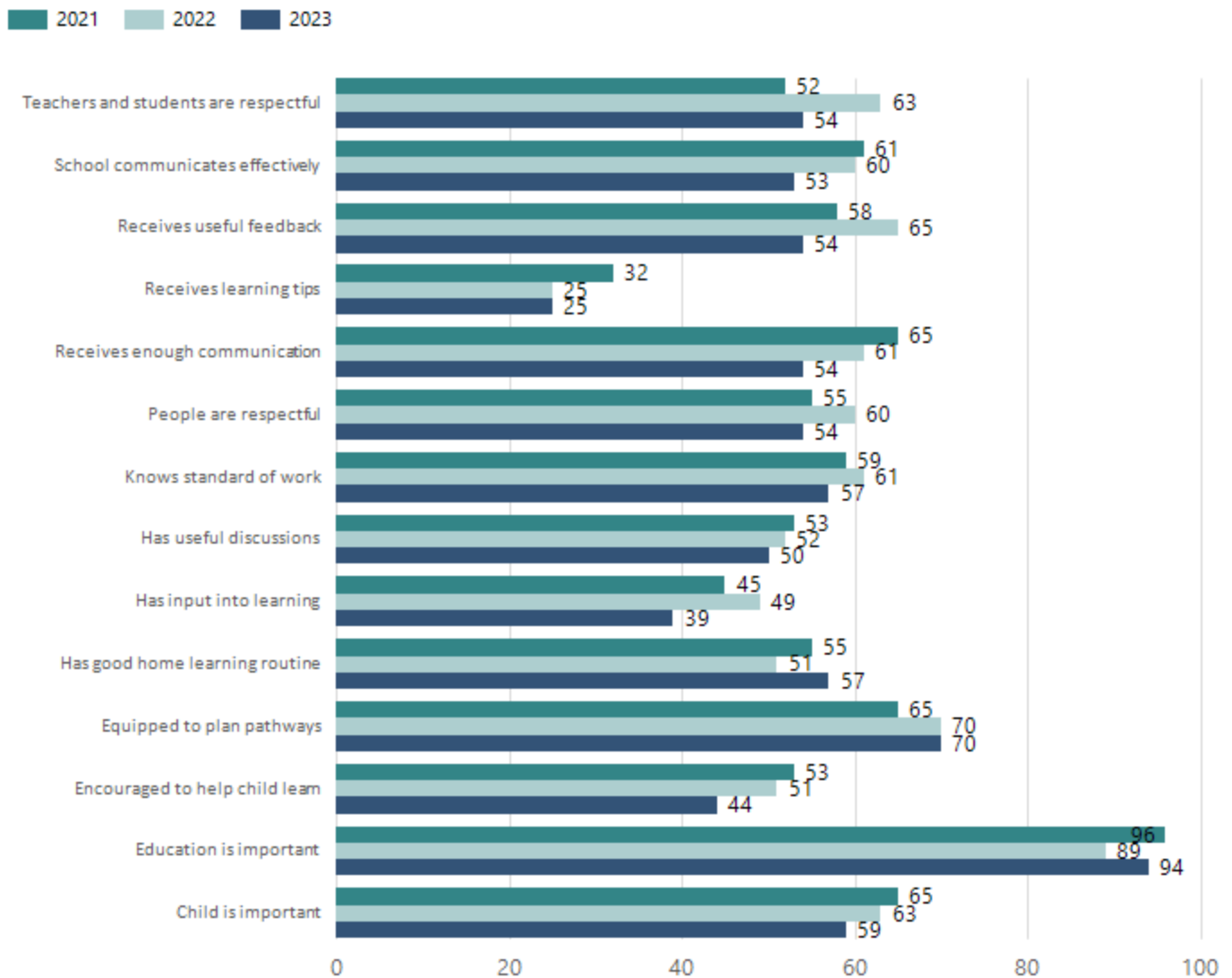
Data Source: Department for Education Attendance Data, Semester 1 Report 2023. A blank cell indicates there were no students enrolled. 'Primary Other' includes students enrolled in specialised education options. 'Secondary Other' includes students who have already spent a year at Year 12 and elected to undertake further study at Year 12.

Attendance Comment

In South Australia, all children and young people must be in school from 6 years to 16 years old. They must attend a government or non-government school full time. From age 16 to 17 however, young people must attend school or an approved learning program (such as an apprenticeship, traineeship, accredited course or university). Schools and parents must encourage and support students to come to school every day. Parents and caregivers must make sure their child is enrolled in a school, and attends school all day and everyday it is open, unless a child is sick or has an approved exemption. Teachers and leaders actively follow up when a student misses school, including recording all absences and non-attendance. All schools in South Australia have local attendance procedures governed under the Education and Children's Services Regulations 2020.

Parent Opinion Survey Results

Proportion of agree/strongly agree response(%)



Data Source: 2023 Department for Education Parent Opinions Survey, Term 3 2023.

Intended Destination

Leave Reason	Number	%
PE - PAID EMPLOYMENT IN SA	1	9.0%
SM - SEEKING EMPLOYMENT IN SA	1	9.0%
TG - TRANSFERRED TO SA GOVERNMENT SCHOOL	9	82.0%

Data Source: Department for Education Destination Data Report, 2023. Data extract term 3 2023. Data shows recorded destinations for students that left the school in the previous year. Data is uploaded by schools in term 3 and may not reflect final or total figures at time of report creation.

Highest Qualifications held by the teaching workforce and workforce composition

All teachers at this school are qualified and registered with the SA Teachers Registration Board.

Qualification Level	Number of Qualifications
Bachelor's degrees or Diplomas	14
Postgraduate Qualifications	16

Data Source: Data extracted from Mandatory Workforce Information Collections as on the last pay date of June 2023. As self-reported by staff in the system.

Please note: Data includes staff who are Actively employed and on extended paid leave. Please note only the highest qualification of the Teaching staff is reported. Excludes any number of other certifications earned.

Workforce composition including indigenous staff

	Teaching Staff		Non-Teaching Staff	
	Indigenous	Non-Indigenous	Indigenous	Non-Indigenous
Full-Time Equivalents	0.0	26.9	0.0	14.6
Persons	0.0	30.0	0.0	20.0

Data Source: Data extracted from Mandatory Workforce Information Collection as on the last pay date of June 2023.

Please note: Data includes staff who are actively employed and on extended paid leave. "Indigenous category" is self-reported by staff in the system.

Financial Statement

Funding Source	Amount
Grants: State	\$9281
Grants: Commonwealth	\$750
Parent Contributions	\$186 000
Fund Raising	\$2881
Other	\$62 000

Data Source: School supplied data.