



2023 annual report to the Community

Streaky Bay Area School

Streaky Bay Area School number: 0745

Partnership: Far West

School principal:

Christopher Roberts

A handwritten signature in black ink, appearing to read "C Roberts".

Governing Council Report 2023

The Governing Council for 2023 consisted of; Julie Cash (Chairperson), Kayla Window (Vice Chairperson), Renae Edmunds (Secretary), Courtney Faulkner (Treasurer), Tobin Woolford, Clint Tomney, Nerissa Baldock, Georgina Elliott (Staff) and Cliff Pudney (Community Rep).

We welcomed the return back to the new normal from the Covid disruptions of the past few years with all programs back to pre-Covid such as lessons, community library, Story and Rhyme Time.

We approved the budget to continue straight year level classes across the school, and we won a Dept of Sport and Recreation grant of \$44 990 to go towards building a large shed and new pool solar heating system. This is scheduled to begin construction in early December this year.

We supported the staff to continue to work with the ban on mobile phones in the Primary and Secondary schools and we had input about the proposed student free days and school closure days for the year.

We had the wonderful opportunity to meet with the school captains and SRC to get updates on their work and ideas to improve the school.

This year we met with Tammy Williams (Education Director) to discuss the Principal's tenure ending, and we were invited to answer survey questions about our expectations of this role for the next tenure.

We heard reports from the Principal, Staff and sub committees of Parents and Friends, Library, Bus, Grounds, Finance, Canteen and Vacation Recreation. We are extremely grateful for Toni Foster stepping in as acting Director and her co-workers for this vital program. We wish to express our gratitude to Naomi Rogers, Kayla Window and the other volunteers for running the canteen and providing tasty and healthy food options for the school.

We congratulate the graduating class of 2023 and wish them all the best in the future. We also congratulate our principal Chris Roberts and the wonderful staff for a successful year.

Most of us our trying to juggle the balls of parenthood and working, but if you want to show an interest and support to our students and school, join Governing Council or Parents and Friends.

Julie Cash
Chairperson

Context Statement

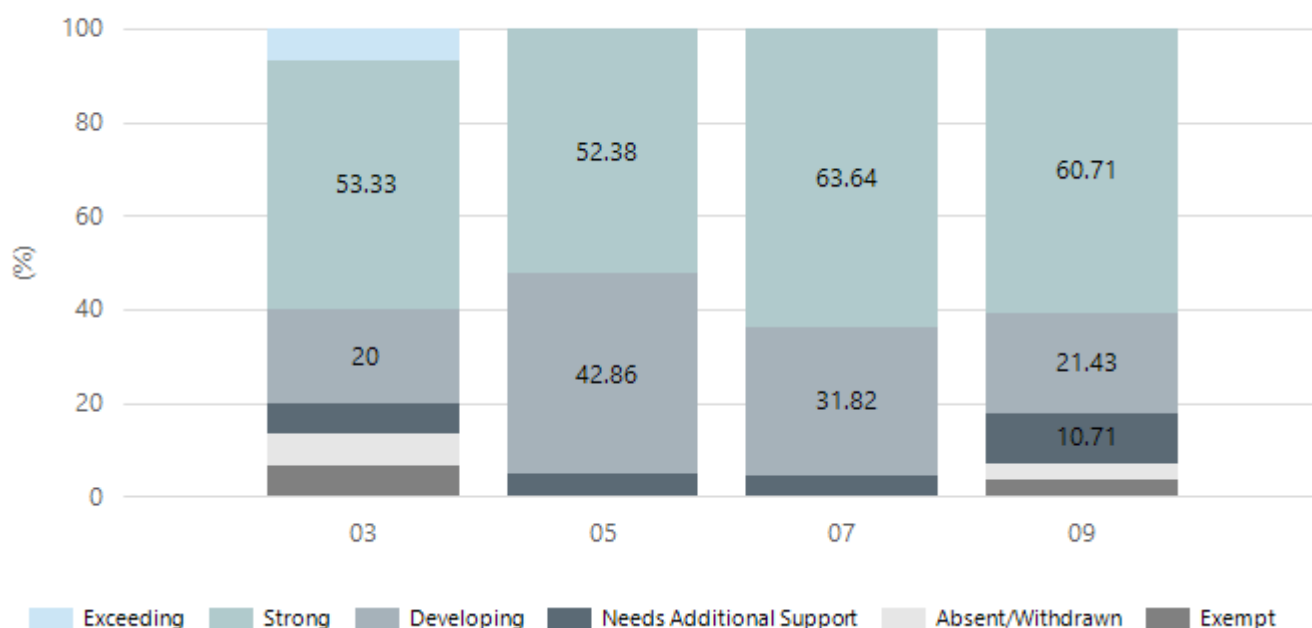
Streaky Bay Area School caters for students from R-12. At the time of this report, the enrolment in 2023 is 279. Streaky Bay Area School is classified as Category 5 on the Department for Education Index of Educational Disadvantage. At the time of this report, the school population includes 4% Aboriginal students, 7% students with disabilities. Further information about the school is available on the school's website (including its context statement), as well as the My School website.

Performance Summary

NAPLAN Proficiency

In 2023, the Australian Curriculum, Assessment and Reporting Authority (ACARA) - a Commonwealth Independent statutory authority - announced changes to NAPLAN performance reporting. This new way of reporting by ACARA that NAPLAN results from 2023 will not be comparable to previous years. The new approach replaces the previous numerical NAPLAN bands and the national minimum standard.

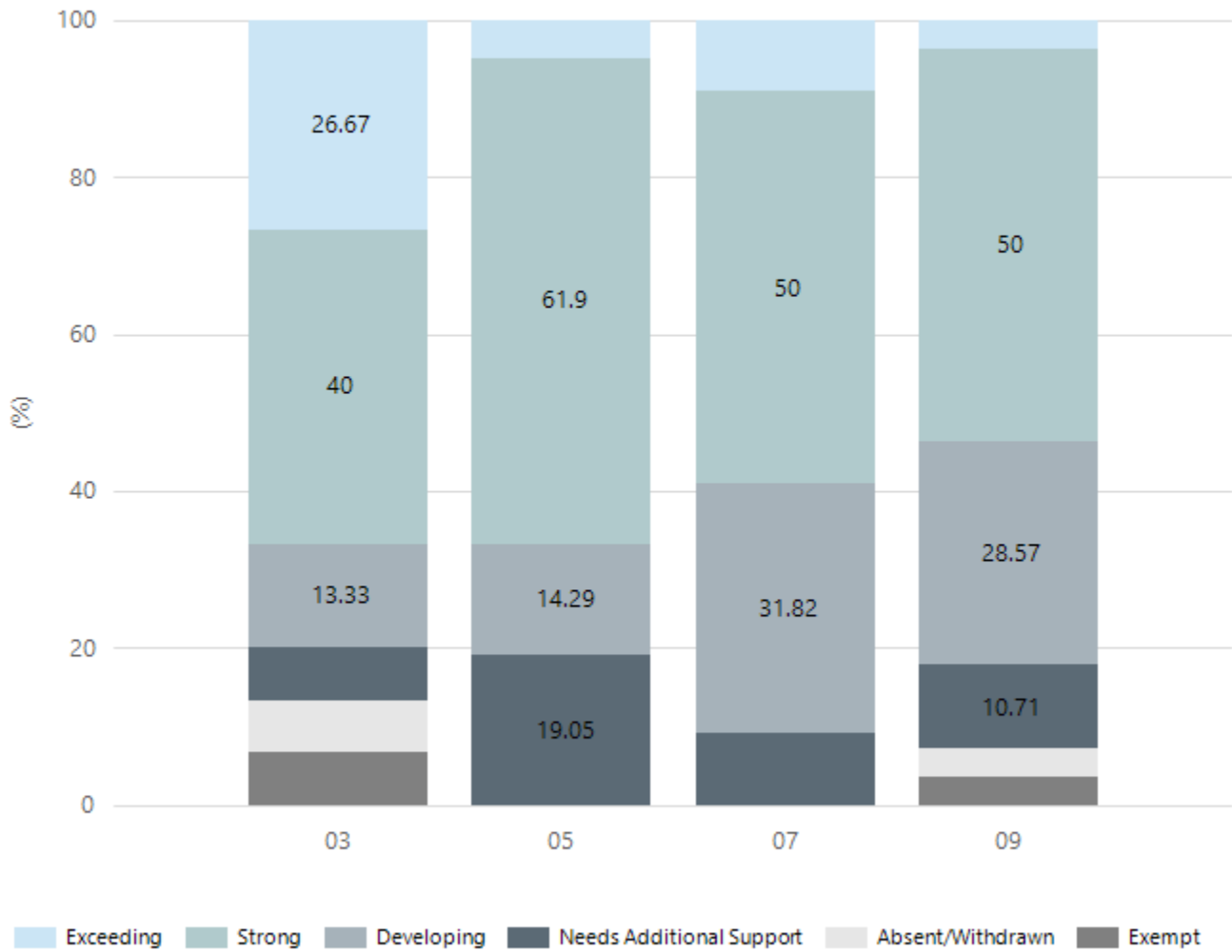
Numeracy



| Year Level | 03 | 05 | 07 | 09 |
|--------------------------|----|----|----|----|
| Exceeding | 1 | | | |
| Strong | 8 | 11 | 14 | 17 |
| Developing | 3 | 9 | 7 | 6 |
| Needs Additional Support | 1 | 1 | 1 | 3 |
| Absent/Withdrawn | 1 | | | 1 |
| Exempt | 1 | | | 1 |
| Total | 15 | 21 | 22 | 28 |

Data Source: Department for Education Assessment Data Holdings, 2023. When there are less than six students in a cohort, no data is supplied.

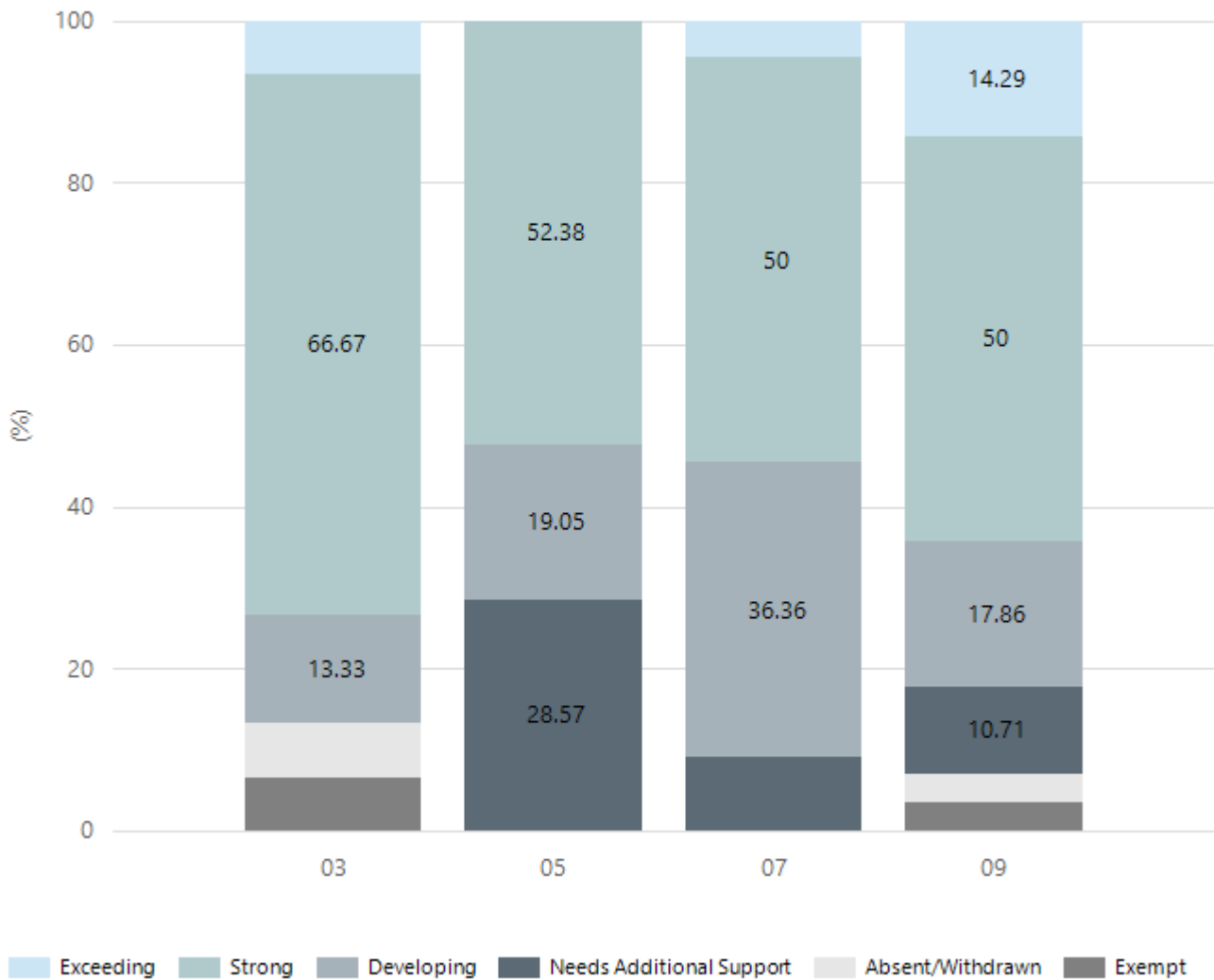
Reading



| Year Level | 03 | 05 | 07 | 09 |
|--------------------------|----|----|----|----|
| Exceeding | 4 | 1 | 2 | 1 |
| Strong | 6 | 13 | 11 | 14 |
| Developing | 2 | 3 | 7 | 8 |
| Needs Additional Support | 1 | 4 | 2 | 3 |
| Absent/Withdrawn | 1 | | | 1 |
| Exempt | 1 | | | 1 |
| Total | 15 | 21 | 22 | 28 |

Data Source: Department for Education Assessment Data Holdings, 2023. When there are less than six students in a cohort, no data is supplied.

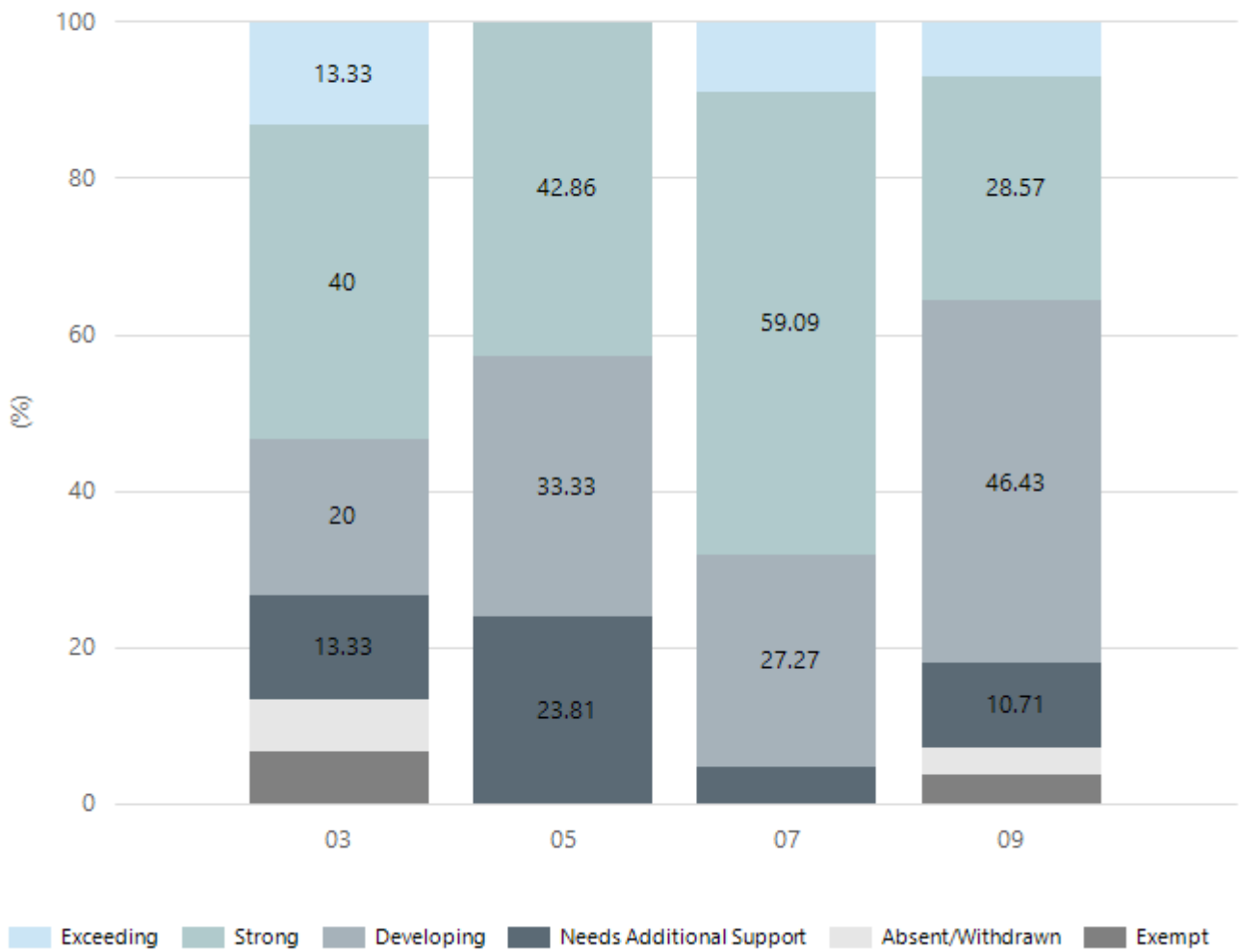
Writing



| Year Level | 03 | 05 | 07 | 09 |
|--------------------------|----|----|----|----|
| Exceeding | 1 | | 1 | 4 |
| Strong | 10 | 11 | 11 | 14 |
| Developing | 2 | 4 | 8 | 5 |
| Needs Additional Support | | 6 | 2 | 3 |
| Absent/Withdrawn | 1 | | | 1 |
| Exempt | 1 | | | 1 |
| Total | 15 | 21 | 22 | 28 |

Data Source: Department for Education Assessment Data Holdings, 2023. When there are less than six students in a cohort, no data is supplied.

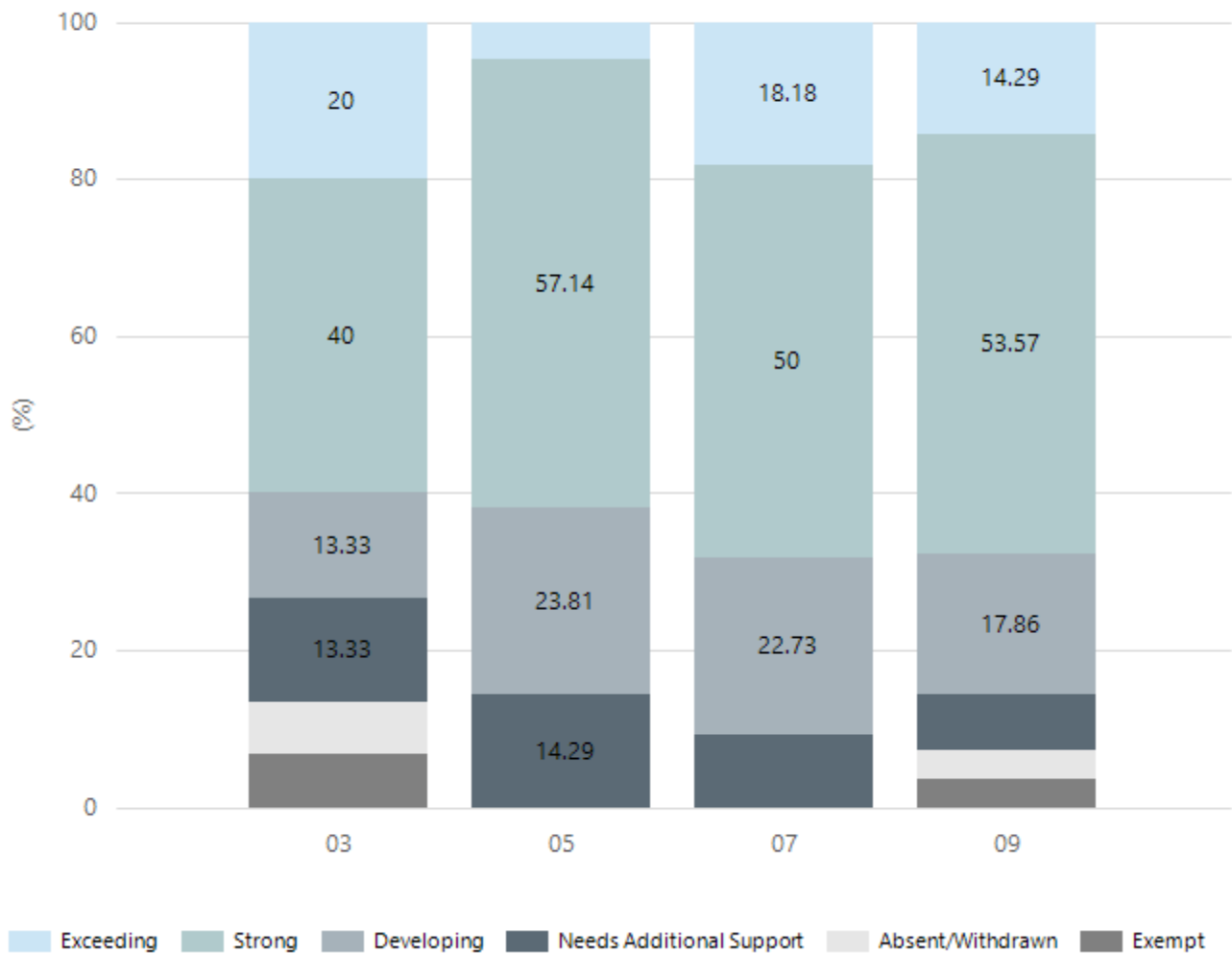
Grammar



| Year Level | 03 | 05 | 07 | 09 |
|--------------------------|----|----|----|----|
| Exceeding | 2 | | 2 | 2 |
| Strong | 6 | 9 | 13 | 8 |
| Developing | 3 | 7 | 6 | 13 |
| Needs Additional Support | 2 | 5 | 1 | 3 |
| Absent/Withdrawn | 1 | | | 1 |
| Exempt | 1 | | | 1 |
| Total | 15 | 21 | 22 | 28 |

Data Source: Department for Education Assessment Data Holdings, 2023. When there are less than six students in a cohort, no data is supplied.

Spelling



| Year Level | 03 | 05 | 07 | 09 |
|--------------------------|----|----|----|----|
| Exceeding | 3 | 1 | 4 | 4 |
| Strong | 6 | 12 | 11 | 15 |
| Developing | 2 | 5 | 5 | 5 |
| Needs Additional Support | 2 | 3 | 2 | 2 |
| Absent/Withdrawn | 1 | | | 1 |
| Exempt | 1 | | | 1 |
| Total | 15 | 21 | 22 | 28 |

Data Source: Department for Education Assessment Data Holdings, 2023. When there are less than six students in a cohort, no data is supplied.

South Australian Certificate of Education - SACE

SACE Stage 2 Grades - Percentage of grades that are C- or above for attempted SACE subjects (SEA)

| 2020 | 2021 | 2022 | 2023 |
|------|------|------|------|
| 100% | 100% | 100% | 100% |

Data Source: SACE School Data Reports, as of February 2023 for 2020-2022. 2023 SACE results are School supplied data. When there are less than six students, no data is supplied. Due to rounding of percentages, total results may not add up to 100%.

SACE Stage 2 Grade Distribution

| Grade | 2020 | 2021 | 2022 | 2023 |
|-------|------|------|------|------|
| A+ | 2% | 3% | 3% | 0% |
| A | 15% | 16% | 25% | 20% |
| A- | 11% | 11% | 25% | 14% |
| B+ | 28% | 8% | 10% | 20% |
| B | 34% | 11% | 18% | 17% |
| B- | 8% | 30% | 18% | 14% |
| C+ | 2% | 19% | 0% | 9% |
| C | 0% | 3% | 3% | 6% |

Data Source: SACE School Data Reports, as of February 2023 for 2020-2022. 2023 SACE results are School supplied data. When there are less than six students, no data is supplied. Due to rounding of percentages, total results may not add up to 100%.

SACE Completion - Percentage of completers out of those students who had the potential to complete their SACE in October that year

| 2020 | 2021 | 2022 | 2023 |
|------|------|------|------|
| 100% | 100% | 100% | 100% |

Data Source: SACE School Data Reports, as of February 2023 for 2020-2022. 2023 SACE results are School supplied data. When there are less than six students, no data is supplied. Due to rounding of percentages, total results may not add up to 100%.

Year 12 Students undertaking Vocational or Trade Training (VET)

| | 2021 | 2022 | 2023 |
|--|------|------|------|
| Percentage of Year 12 students undertaking Vocational Training or Trade Training | 45% | 18% | 8% |
| Percentage of Year 12 students attaining a Year 12 certificate or equivalent VET qualification | 100% | 100% | 100% |

Data Source: School supplied data

School Attendance

| Year Level | 2021 | 2022 | 2023 |
|-----------------|-------|-------|-------|
| Reception | 88.5% | 81.5% | 84.9% |
| Year 01 | 88.3% | 83.5% | 88.0% |
| Year 02 | 90.9% | 86.6% | 86.5% |
| Year 03 | 91.7% | 87.1% | 86.0% |
| Year 04 | 91.2% | 83.1% | 89.7% |
| Year 05 | 93.2% | 87.2% | 83.3% |
| Year 06 | 87.8% | 86.1% | 89.3% |
| Year 07 | 88.7% | 80.8% | 89.9% |
| Year 08 | 91.7% | 80.5% | 81.3% |
| Year 09 | 82.1% | 85.3% | 81.3% |
| Year 10 | 86.1% | 74.2% | 77.0% |
| Year 11 | 83.6% | 77.8% | 72.7% |
| Year 12 | 78.9% | 81.3% | 84.7% |
| Primary Other | 79.1% | | |
| Secondary Other | 81.6% | 84.5% | |
| Total | 88.6% | 83.3% | 84.6% |

Data Source: Department for Education Attendance Data, Semester 1 Report 2023. A blank cell indicates there were no students enrolled. 'Primary Other' includes students enrolled in specialised education options. 'Secondary Other' includes students who have already spent a year at Year 12 and elected to undertake further study at Year 12.

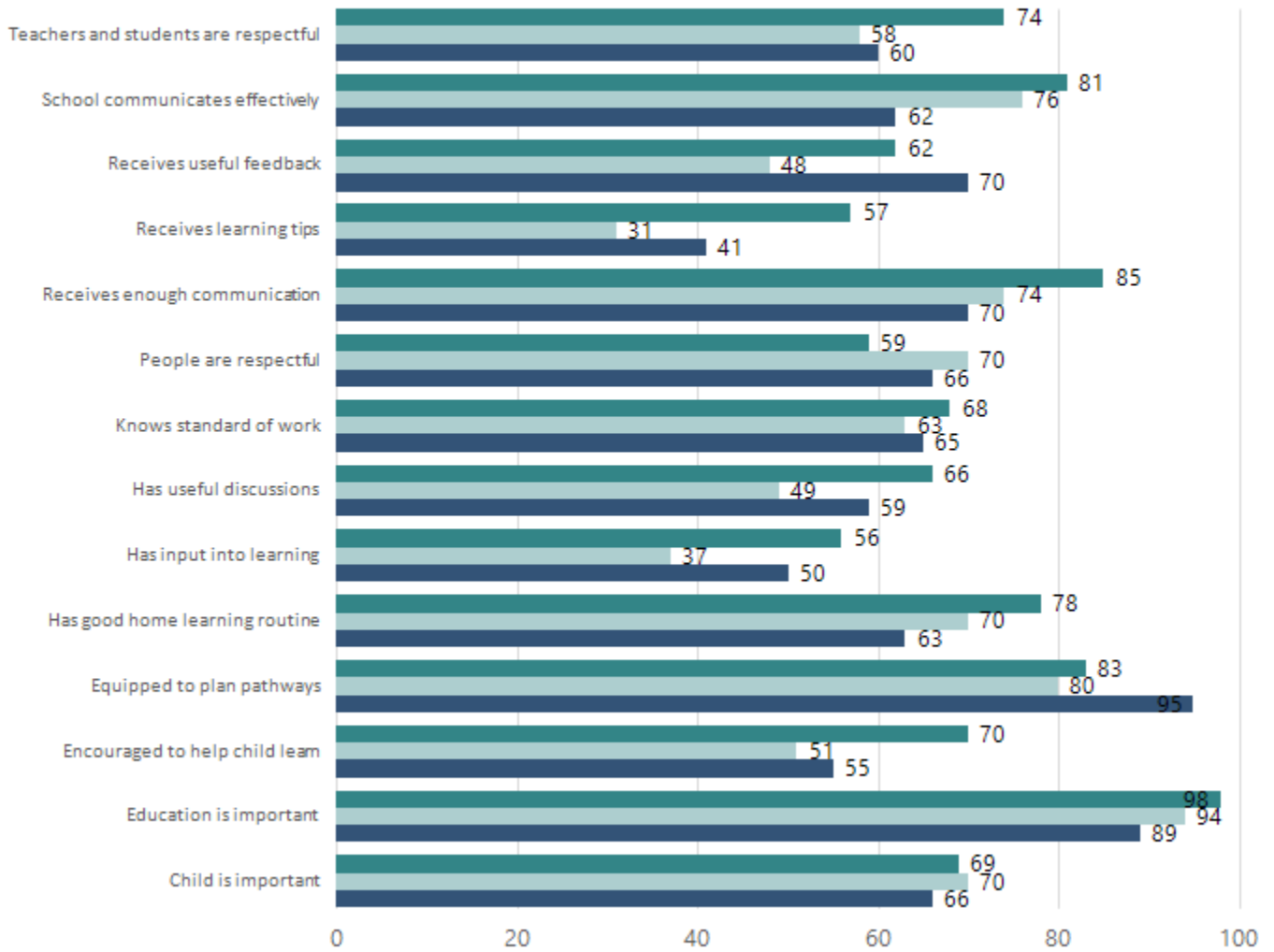
Attendance Comment

In South Australia, all children and young people must be in school from 6 years to 16 years old. They must attend a government or non-government school full time. From age 16 to 17 however, young people must attend school or an approved learning program (such as an apprenticeship, traineeship, accredited course or university). Schools and parents must encourage and support students to come to school every day. Parents and caregivers must make sure their child is enrolled in a school, and attends school all day and everyday it is open, unless a child is sick or has an approved exemption. Teachers and leaders actively follow up when a student misses school, including recording all absences and non-attendance. All schools in South Australia have local attendance procedures governed under the Education and Children's Services Regulations 2020.

Parent Opinion Survey Results

Proportion of agree/strongly agree response(%)

2021 2022 2023



Data Source: 2023 Department for Education Parent Opinions Survey, Term 3 2023.

Intended Destination

| Leave Reason | Number | % |
|--|--------|-------|
| NT - LEFT SA FOR NT | 2 | 15.0% |
| PE - PAID EMPLOYMENT IN SA | 1 | 8.0% |
| QL - LEFT SA FOR QLD | 3 | 23.0% |
| SM - SEEKING EMPLOYMENT IN SA | 1 | 8.0% |
| TG - TRANSFERRED TO SA GOVERNMENT SCHOOL | 2 | 15.0% |
| U - UNKNOWN | 1 | 8.0% |
| VI - LEFT SA FOR VIC | 1 | 8.0% |
| WA - LEFT SA FOR WA | 2 | 15.0% |

Data Source: Department for Education Destination Data Report, 2023. Data extract term 3 2023. Data shows recorded destinations for students that left the school in the previous year. Data is uploaded by schools in term 3 and may not reflect final or total figures at time of report creation.

Highest Qualifications held by the teaching workforce and workforce composition

All teachers at this school are qualified and registered with the SA Teachers Registration Board.

| Qualification Level | Number of Qualifications |
|--------------------------------|--------------------------|
| Bachelor's degrees or Diplomas | 24 |
| Postgraduate Qualifications | 5 |

Data Source: Data extracted from Mandatory Workforce Information Collections as on the last pay date of June 2023. As self-reported by staff in the system.

Please note: Data includes staff who are Actively employed and on extended paid leave. Please note only the highest qualification of the Teaching staff is reported. Excludes any number of other certifications earned.

Workforce composition including indigenous staff

| | Teaching Staff | | Non-Teaching Staff | |
|-----------------------|----------------|----------------|--------------------|----------------|
| | Indigenous | Non-Indigenous | Indigenous | Non-Indigenous |
| Full-Time Equivalents | 0.0 | 26.3 | 0.0 | 14.0 |
| Persons | 0.0 | 29.0 | 0.0 | 21.0 |

Data Source: Data extracted from Mandatory Workforce Information Collection as on the last pay date of June 2023.

Please note: Data includes staff who are actively employed and on extended paid leave. "Indigenous category" is self-reported by staff in the system.

Financial Statement

| Funding Source | Amount |
|----------------------|------------|
| Grants: State | 4483985.00 |
| Grants: Commonwealth | 38855.14 |
| Parent Contributions | 114545.79 |
| Fund Raising | 13444.45 |
| Other | 150759.54 |

Data Source: School supplied data.