

2024 annual report to the Community

# Hallett Cove School

Hallett Cove School number: 640

Partnership: Marion Coast



School principal:

Anthony Hall

A handwritten signature in black ink.

Date of endorsement:

15/02/2025



Government  
of South Australia  
Department for Education

# Context Statement

Hallett Cove School caters for students from R-12. At the time of this report, the enrolment in 2024 is 1207. Hallett Cove School is classified as Category 5 on the Department for Education Index of Educational Disadvantage. At the time of this report, the school population includes 4% Aboriginal students, 6% students with disabilities, 5% students with English as an additional language or dialect (EALD) funded background, 1% children/young people in care. Further information about the school is available on the school's website (including its context statement), as well as the My School website.

Data Source: Department for Education data holdings from Mid census captured in AUGUST 2024.

# Governing Council Report

This year has been one of growth, reflection, and progress as we continue to strengthen our school community and strive for excellence in education and student wellbeing.

A significant milestone this year has been the introduction of our new Purpose Statement: Empowering our Community to Thrive. Alongside this, we have reaffirmed our commitment to new values of Respect, Resilience and Integrity. These guiding principles have been embedded into the fabric of our school, shaping the way our students, staff, and families engage with one another. It has been inspiring to see the Hallett Cove School community embrace these values and work collaboratively to bring them to life in meaningful ways.

Another key decision made this year was the move to outsource the school canteen operations. After careful consideration, the Governing Council supported this change to ensure the ongoing sustainability and quality of food services for our students. We extend our deepest gratitude to our dedicated canteen employees for their hard work and service over the years. Their contribution to our school has been invaluable, and we sincerely appreciate their commitment. As we transition to this new model, we warmly welcome Rory's School Lunches to the Hallett Cove School community and look forward to the benefits this partnership will bring to our students and families.

We would also like to acknowledge the incredible contributions of our School Captains, Elysia and Rhys, who have attended each Governing Council meeting and provided valuable insights into the work of our student leaders across the school. Their dedication and leadership have been instrumental in ensuring student voice remains at the forefront of decision-making. We commend them for their enthusiasm and the positive impact they have made.

Finally, I would like to extend my heartfelt thanks to my fellow Governing Council members for their unwavering support and commitment throughout the year. Your dedication to our school is deeply appreciated, and your contributions help shape the future of our students. A special thank you also goes to our Principal, Tony Hall, the wider leadership team and all of our incredible staff for their tireless efforts in creating a nurturing and empowering learning environment. Your hard work and passion make Hallett Cove School a place where our students truly thrive.

As we look ahead, I am confident that our school will continue to grow and strengthen, guided by our shared purpose and values. Thank you to everyone who has played a role in making this year a success.

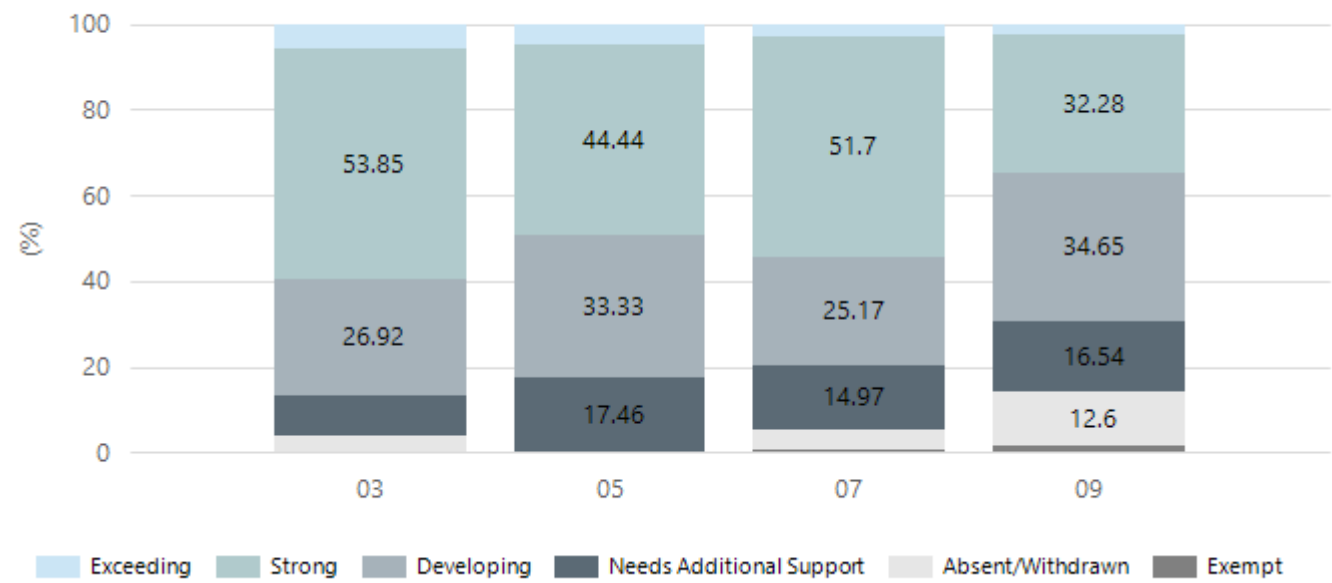
Jay Golley  
Governing Council Chairperson  
Hallett Cove School

# Performance Summary

## NAPLAN Proficiency

In 2023 the Australian Curriculum, Assessment and Reporting Authority (ACARA) - a Commonwealth Independent statutory authority - announced changes to NAPLAN performance reporting. The new approach replaces the previous numerical NAPLAN bands and the national minimum standard.

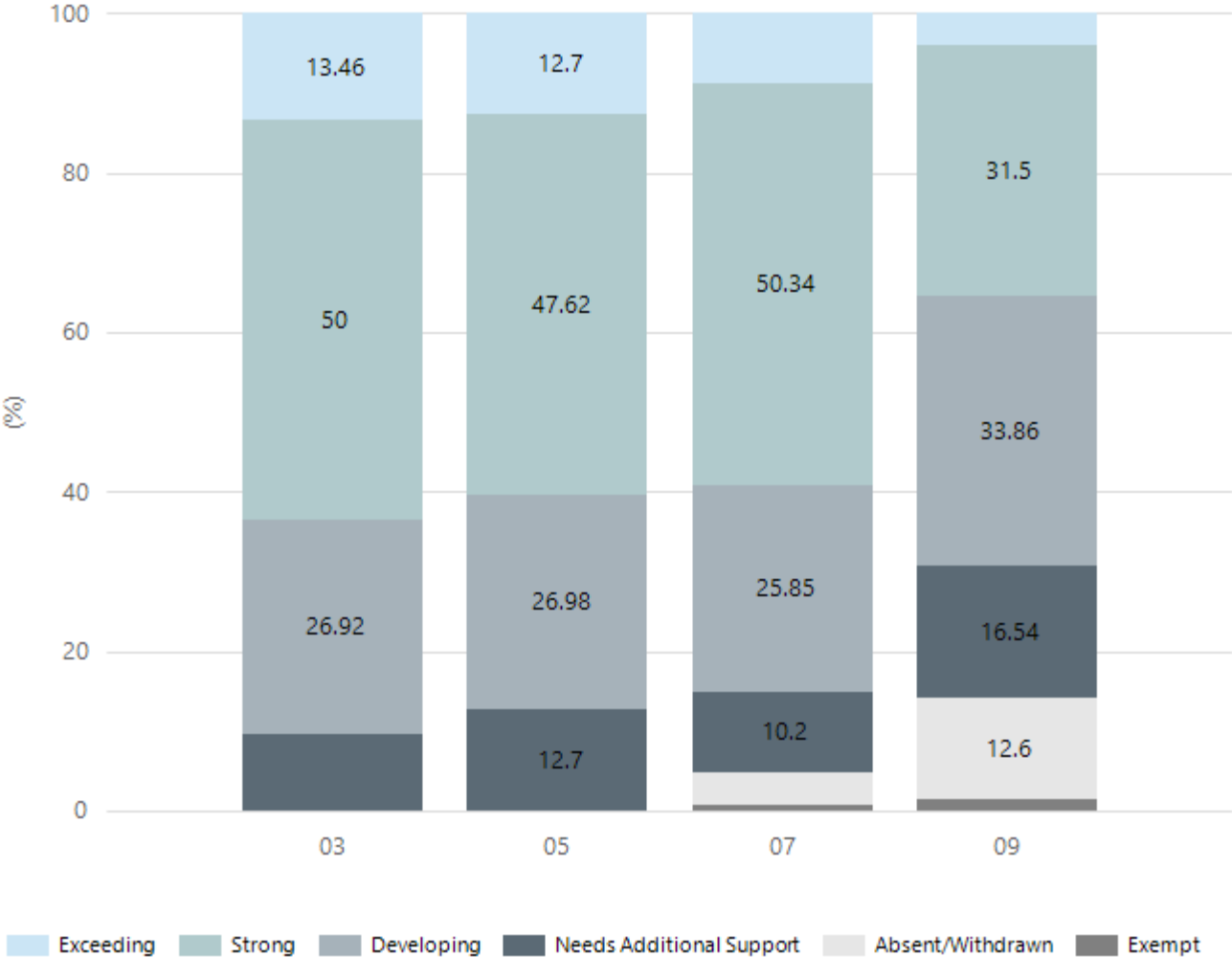
### Numeracy



Year Level	03	05	07	09
Exceeding	3	3	4	3
Strong	28	28	76	41
Developing	14	21	37	44
Needs Additional Support	5	11	22	21
Absent/Withdrawn	2	0	7	16
Exempt	0	0	1	2
Total	52	63	147	127

Data Source: Department for Education Assessment Data Holdings, 2024. If there are less than 6 students who sat NAPLAN in a school, no information will be shown. If a year level has less than 6 students, that year level will not be shown in NAPLAN results.

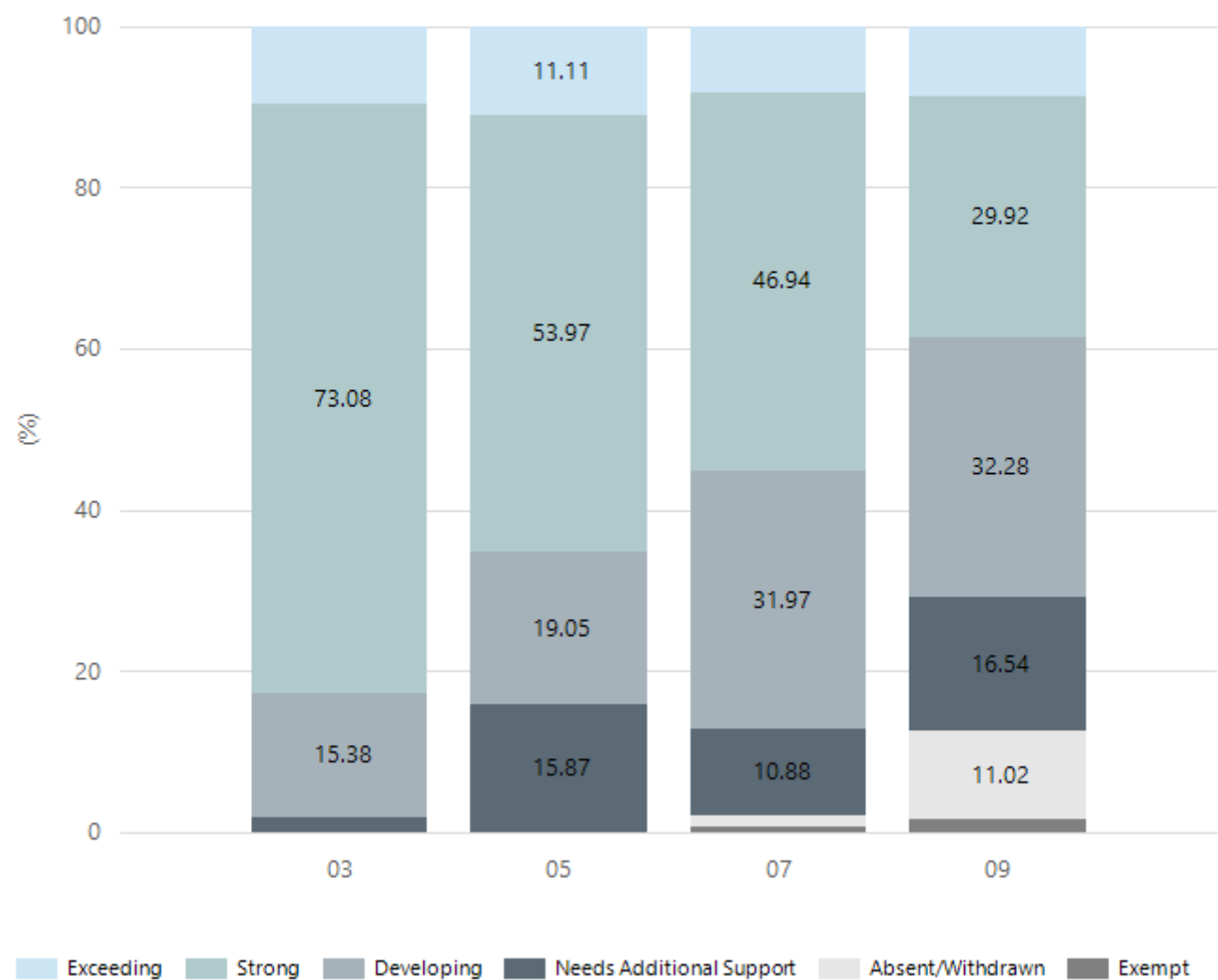
# Reading



Year Level	03	05	07	09
Exceeding	7	8	13	5
Strong	26	30	74	40
Developing	14	17	38	43
Needs Additional Support	5	8	15	21
Absent/Withdrawn	0	0	6	16
Exempt	0	0	1	2
Total	52	63	147	127

Data Source: Department for Education Assessment Data Holdings, 2024. If there are less than 6 students who sat NAPLAN in a school, no information will be shown. If a year level has less than 6 students, that year level will not be shown in NAPLAN results.

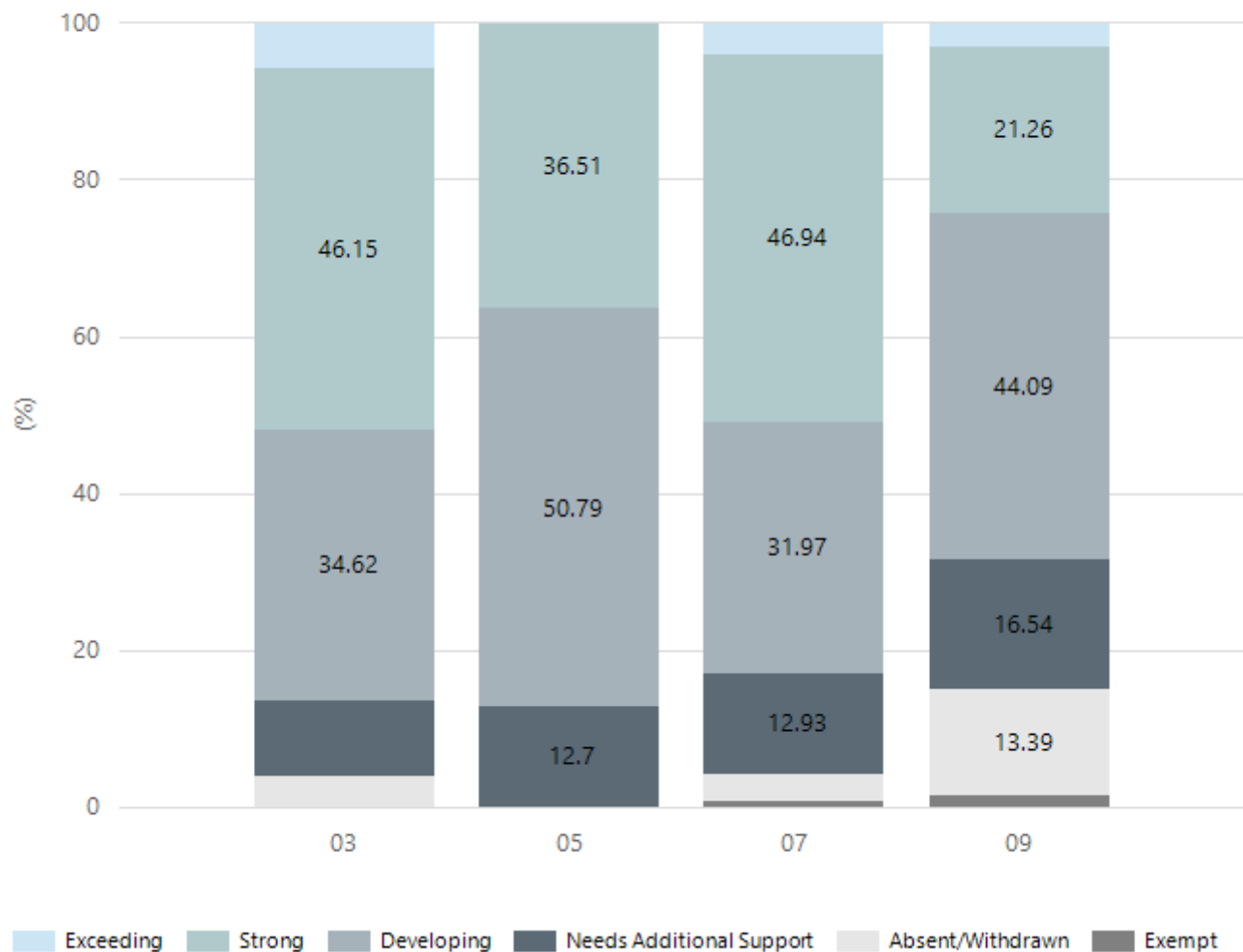
Writing



Year Level	03	05	07	09
Exceeding	5	7	12	11
Strong	38	34	69	38
Developing	8	12	47	41
Needs Additional Support	1	10	16	21
Absent/Withdrawn	0	0	2	14
Exempt	0	0	1	2
Total	52	63	147	127

Data Source: Department for Education Assessment Data Holdings, 2024. If there are less than 6 students who sat NAPLAN in a school, no information will be shown. If a year level has less than 6 students, that year level will not be shown in NAPLAN results.

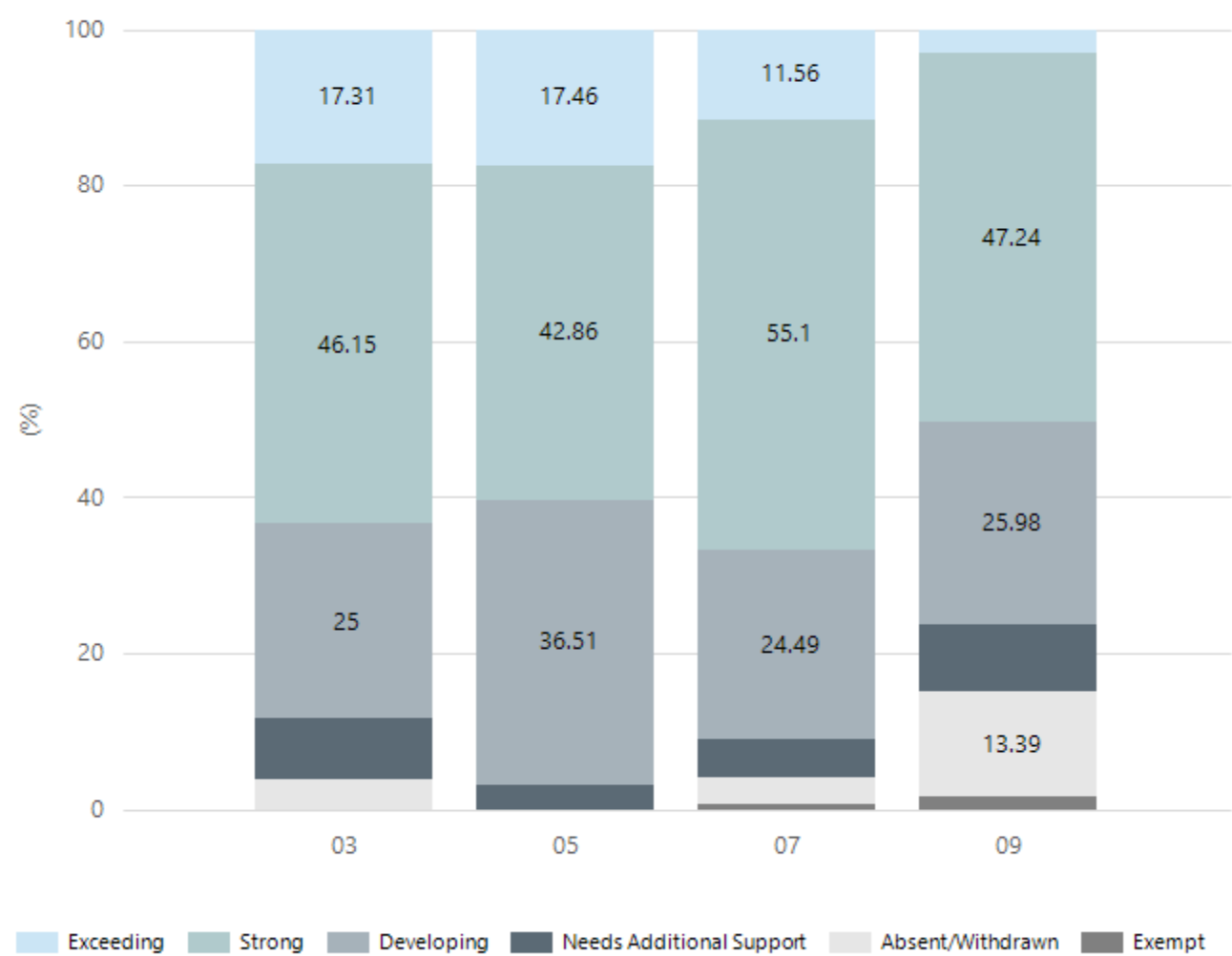
## Grammar



Year Level	03	05	07	09
Exceeding	3	0	6	4
Strong	24	23	69	27
Developing	18	32	47	56
Needs Additional Support	5	8	19	21
Absent/Withdrawn	2	0	5	17
Exempt	0	0	1	2
Total	52	63	147	127

Data Source: Department for Education Assessment Data Holdings, 2024. If there are less than 6 students who sat NAPLAN in a school, no information will be shown. If a year level has less than 6 students, that year level will not be shown in NAPLAN results.

Spelling



Year Level	03	05	07	09
Exceeding	9	11	17	4
Strong	24	27	81	60
Developing	13	23	36	33
Needs Additional Support	4	2	7	11
Absent/Withdrawn	2	0	5	17
Exempt	0	0	1	2
Total	52	63	147	127

Data Source: Department for Education Assessment Data Holdings, 2024. If there are less than 6 students who sat NAPLAN in a school, no information will be shown. If a year level has less than 6 students, that year level will not be shown in NAPLAN results.

# South Australian Certificate of Education - SACE

## SACE Stage 2 Grades - Percentage of grades that are C- or above for attempted SACE subjects (SEA)

2021	2022	2023	2024
100%	100%	100%	100%

Data Source: SACE School Data Reports, as of February 2024 for 2021-2023. 2024 SACE results are School supplied data. When there are less than six students, no data is supplied. Due to rounding of percentages, total results may not add up to 100%.

## SACE Stage 2 Grade Distribution

Grade	2021	2022	2023	2024
A+	0%	0%	1%	1%
A	6%	6%	7%	8%
A-	9%	11%	13%	8%
B+	10%	12%	16%	12%
B	17%	17%	18%	15%
B-	18%	18%	17%	19%
C+	19%	19%	15%	15%
C	18%	14%	12%	20%
C-	2%	1%	1%	3%
D+	0%	0%	0%	0%
D	0%	0%	0%	0%
D-	0%	0%	0%	0%
E+	0%	0%	0%	0%
E	0%	0%	0%	0%
E-	0%	0%	0%	0%

Data Source: SACE School Data Reports, as of February 2024 for 2021-2023. 2024 SACE results are School supplied data. When there are less than six students, no data is supplied. Due to rounding of percentages, total results may not add up to 100%.



# SACE Completion - Percentage of completers out of those students who had the potential to complete their SACE in October that year

2021	2022	2023	2024
99%	100%	100%	100%

Data Source: SACE School Data Reports, as of February 2024 for 2021-2023. 2024 SACE results are School supplied data. When there are less than six students, no data is supplied. Due to rounding of percentages, total results may not add up to 100%.

## Year 12 Students undertaking Vocational or Trade Training (VET)

	2022	2023	2024
Percentage of Year 12 students undertaking Vocational Training or Trade Training	21%	17%	18%
Percentage of Year 12 students attaining a Year 12 certificate or equivalent VET qualification	46%	51%	35%

Data Source: School supplied data

## School Attendance

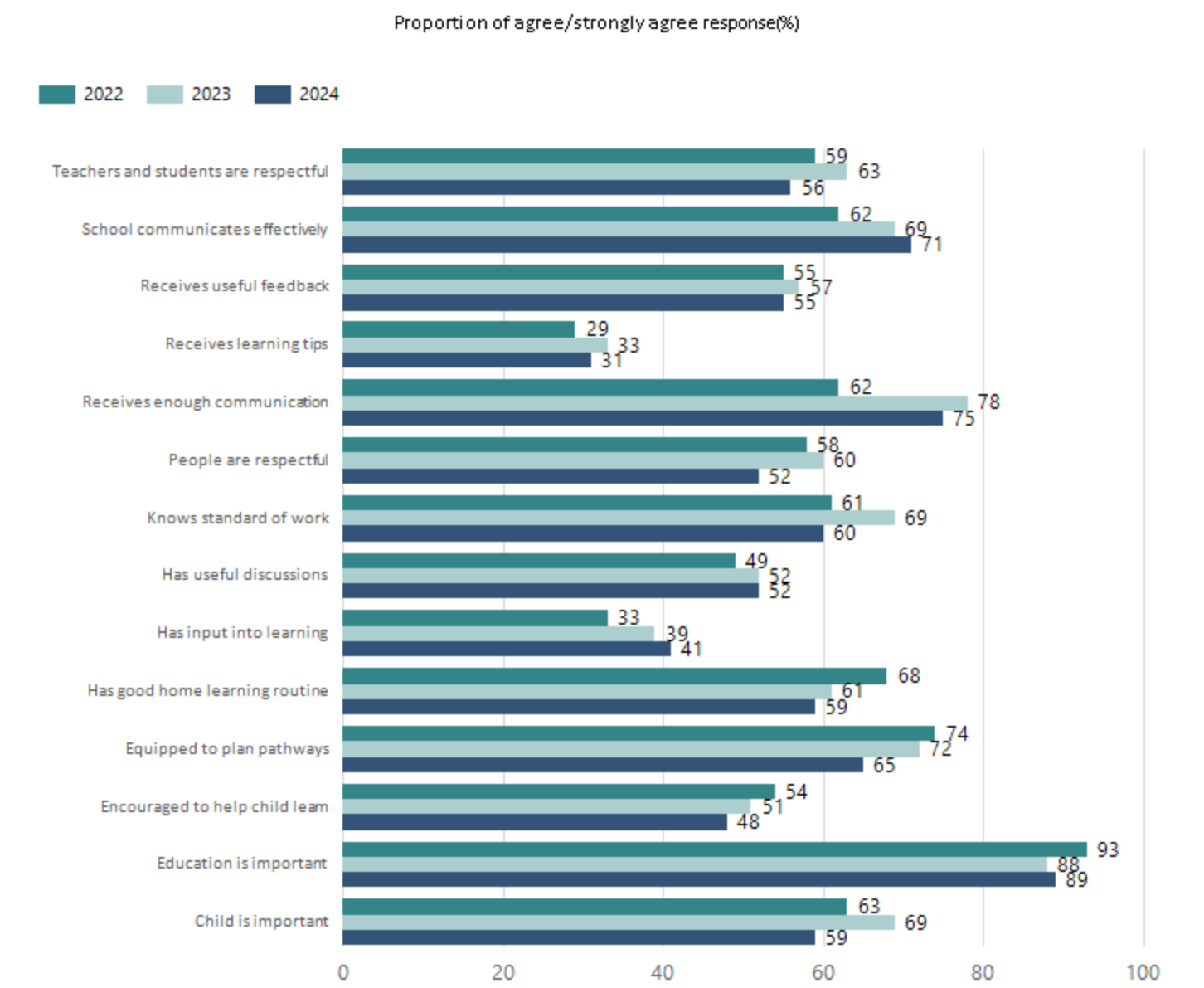
Year Level	2022	2023	2024
Reception	87.5%	91.0%	89.1%
Year 01	90.3%	91.1%	93.4%
Year 02	88.7%	92.6%	90.9%
Year 03	86.5%	92.5%	92.2%
Year 04	88.4%	88.4%	91.7%
Year 05	88.5%	90.3%	89.6%
Year 06	87.4%	85.9%	88.8%
Year 07	85.1%	87.1%	87.8%
Year 08	85.8%	83.8%	84.1%
Year 09	75.1%	83.2%	81.4%
Year 10	78.4%	82.5%	86.9%
Year 11	79.5%	79.0%	84.6%
Year 12	80.8%	85.8%	86.5%
Secondary Other	98.0%		96.7%
Total	83.1%	85.4%	87.0%

Data Source: Department for Education Attendance Data, Semester 1 Report 2024. A blank cell indicates there were no students enrolled. 'Primary Other' includes students enrolled in specialised education options. 'Secondary Other' includes students who have already spent a year at Year 12 and elected to undertake further study at Year 12.

## Attendance Comment

In South Australia, all children and young people must be in school from 6 years to 16 years old. They must attend a government or non-government school full time. From age 16 to 17 however, young people must attend school or an approved learning program (such as an apprenticeship, traineeship, accredited course or university). Schools and parents must encourage and support students to come to school every day. Parents and caregivers must make sure their child is enrolled in a school, and attends school all day and everyday it is open, unless a child is sick or has an approved exemption. Teachers and leaders actively follow up when a student misses school, including recording all absences and non-attendance. All schools in South Australia have local attendance procedures governed under the Education and Children's Services Regulations 2020.

# School Parent Opinion Survey Results



Data Source: 2024 Department for Education Parent Opinions Survey, Term 3 2024.

# Intended Destination

Leave Reason	Number	%
IS - INTERSTATE	12	8.0%
NG - ATTENDING NON-GOV SCHOOL IN SA	12	8.0%
OV - LEFT SA FOR OVERSEAS	92	60.0%
TG - TRANSFERRED TO SA GOVERNMENT SCHOOL	27	18.0%
U - UNKNOWN	10	6.0%

Data Source: Department for Education Destination Data Report, 2024. Data extract term 3 2024. Data shows recorded destinations for students that left the school in the previous year. Data is uploaded by schools in term 3 and may not reflect final or total figures at time of report creation.

# Highest Qualifications held by the teaching workforce and workforce composition

All teachers at this school are qualified and registered with the SA Teachers Registration Board.

Qualification Level	Number of Qualifications
Bachelor's degrees or Diplomas	54
Postgraduate Qualifications	41

Data Source: Data extracted from Mandatory Workforce Information Collections as on the last pay date of June 2024. As self-reported by staff in the system.

Please note: Data includes staff who are Actively employed and on extended paid leave. Please note only the highest qualification of the Teaching staff is reported. Excludes any number of other certifications earned.

## Workforce composition including indigenous staff

	Teaching Staff		Non-Teaching Staff	
	Indigenous	Non-Indigenous	Indigenous	Non-Indigenous
Full-Time Equivalents	1.0	83.6	1.9	35.5
Persons	1.0	94.0	2.0	43.0

Data Source: Data extracted from Mandatory Workforce Information Collection as on the last pay date of June 2024.

Please note: Data includes staff who are actively employed and on extended paid leave. "Indigenous category" is self-reported by staff in the system.

# Financial Statement

Funding Source	Amount
Grants: State	\$15,046,273.25
Grants: Commonwealth	\$6736.36
Parent Contributions	\$939,173.19
Fund Raising	\$31,499.38
Other	\$5,000

Data Source: School supplied data.