

2024 annual report to the Community

# Virginia Primary School and Virginia Preschool

Virginia Primary School number: 455

Virginia Preschool number: 1626

Partnership: Orion



School principal:

Paraskevoula Pounendis

Date of endorsement:

18/02/2025



Government  
of South Australia  
Department for Education

# Context Statement

Virginia Primary School caters for students from R-6. At the time of this report, the enrolment in 2024 is 425. Virginia Primary School is classified as Category 5 on the Department for Education Index of Educational Disadvantage. At the time of this report, the school population includes 5% Aboriginal students, 5% students with disabilities, 10% students with English as an additional language or dialect (EALD) funded background, 1% children/young people in care. Further information about the school is available on the school's website (including its context statement), as well as the My School website.

Information about Virginia Preschool is available on the centres website, as well as the Australian Children's Education and Care Quality Authority (ACECQA) website.

Data Source: Department for Education data holdings from Mid census captured in AUGUST 2024.

# Governing Council Report

As Chairperson of the Governing Council, it is my pleasure to present this report, highlighting the outstanding achievements and ongoing efforts within our school community. This year has been marked by exceptional dedication from our teachers, leadership team, and students, all of whom have contributed to a thriving educational environment.

Our teachers have demonstrated remarkable commitment to fostering a culture of continuous learning and growth for every student. Their focus on the science of reading has been particularly noteworthy, with our students achieving impressive results. This focus has empowered our students to embrace new learning opportunities with confidence and enthusiasm. The leadership team has been instrumental in guiding these efforts, ensuring that our educational strategies are aligned with best practices and tailored to meet the needs of our diverse student body. Their vision and dedication have been pivotal in creating an environment where every student can succeed.

Our students have shown incredible resilience and adaptability, embracing the challenges and opportunities presented to them. Their willingness to engage with new learning experiences is a testament to the supportive and nurturing environment cultivated by our school.

Virginia Primary School is committed to fostering positive relationships and cultivating a safe, supportive learning environment. This commitment is evident in the strong sense of community and mutual respect that permeates our school. Such an environment not only enhances academic achievement but also supports the social and emotional well-being of our students. Looking to the future, the Governing Council is excited about the upcoming capital works scheduled for 2025. These developments will help alleviate the current enrolment pressures, a positive challenge reflecting the growing demand for our school's excellent educational offerings. We are confident that these improvements will further enhance our capacity to provide a high-quality learning experience for all students.

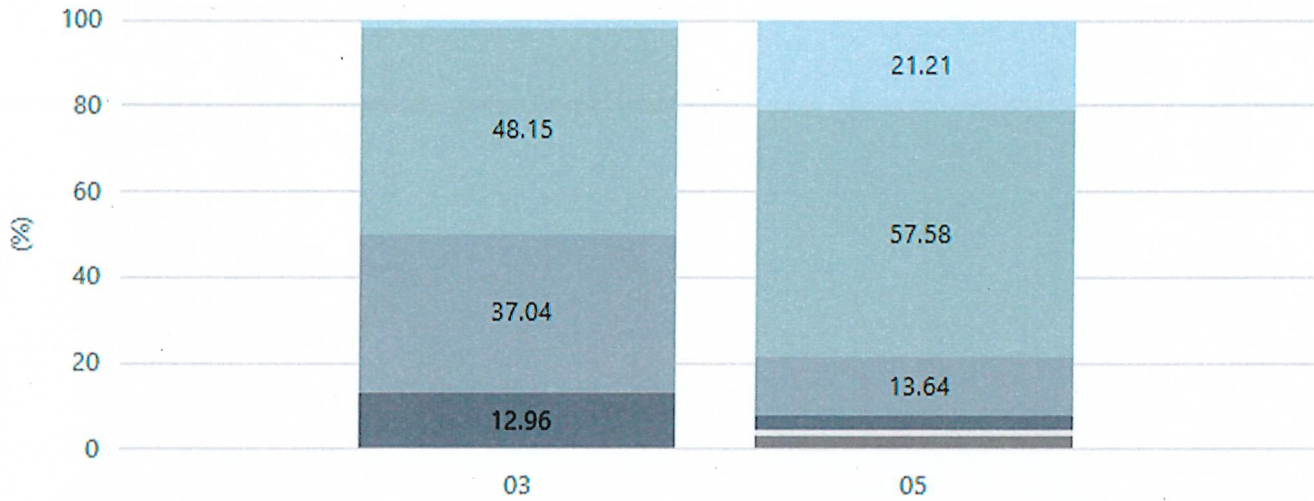
In conclusion, I would like to extend my heartfelt thanks to all members of the Virginia Primary School community for their unwavering support and dedication. Together, we are building a brighter future for our students.

# Performance Summary

## NAPLAN Proficiency

In 2023 the Australian Curriculum, Assessment and Reporting Authority (ACARA) - a Commonwealth Independent statutory authority - announced changes to NAPLAN performance reporting. The new approach replaces the previous numerical NAPLAN bands and the national minimum standard.

### Numeracy

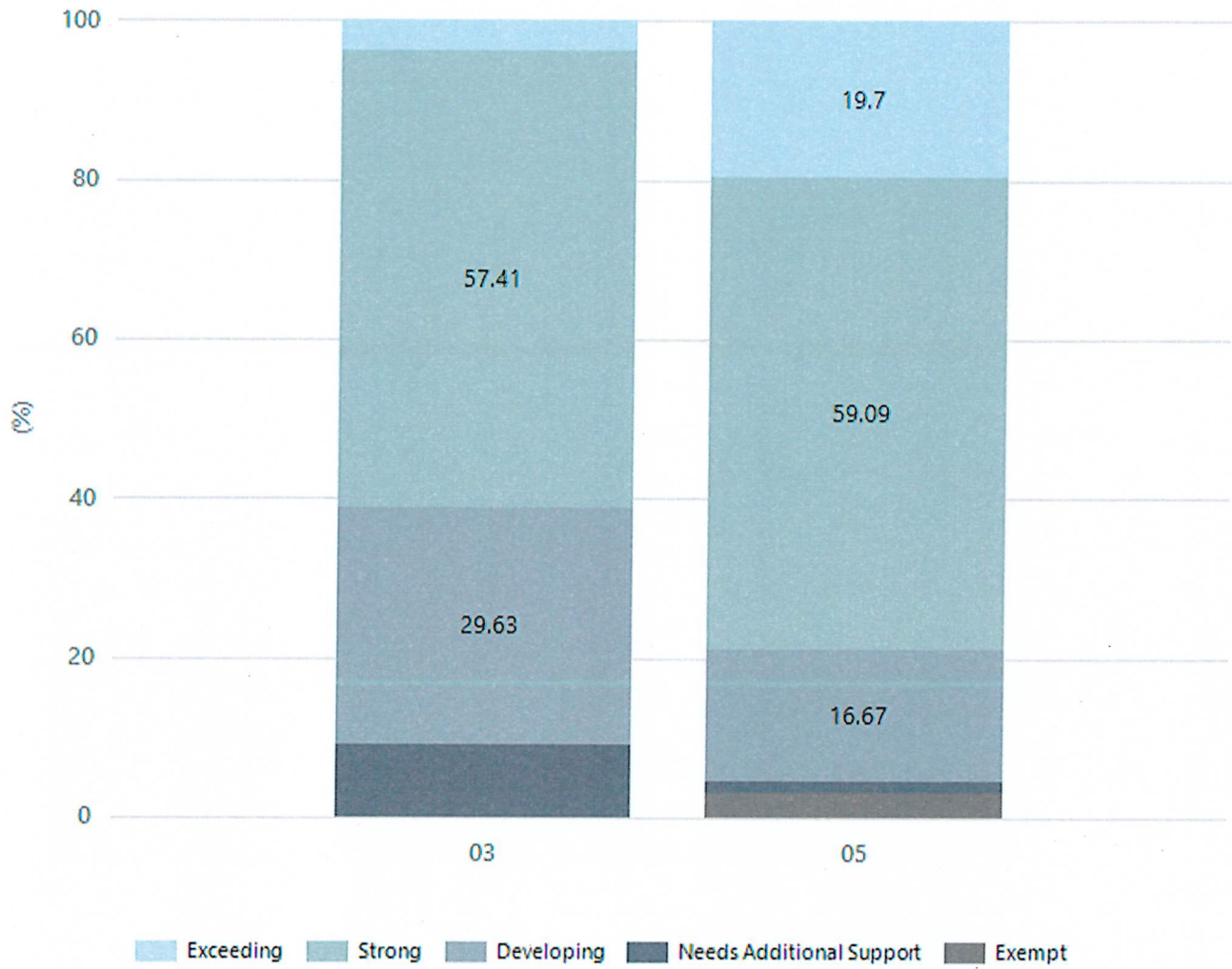


Exceeding Strong Developing Needs Additional Support Absent/Withdrawn Exempt

Year Level	03	05
Exceeding	1	14
Strong	26	38
Developing	20	9
Needs Additional Support	7	2
Absent/Withdrawn		1
Exempt		2
Total	54	66

Data Source: Department for Education Assessment Data Holdings, 2024. If there are less than 6 students who sat NAPLAN in a school, no information will be shown. If a year level has less than 6 students, that year level will not be shown in NAPLAN results.

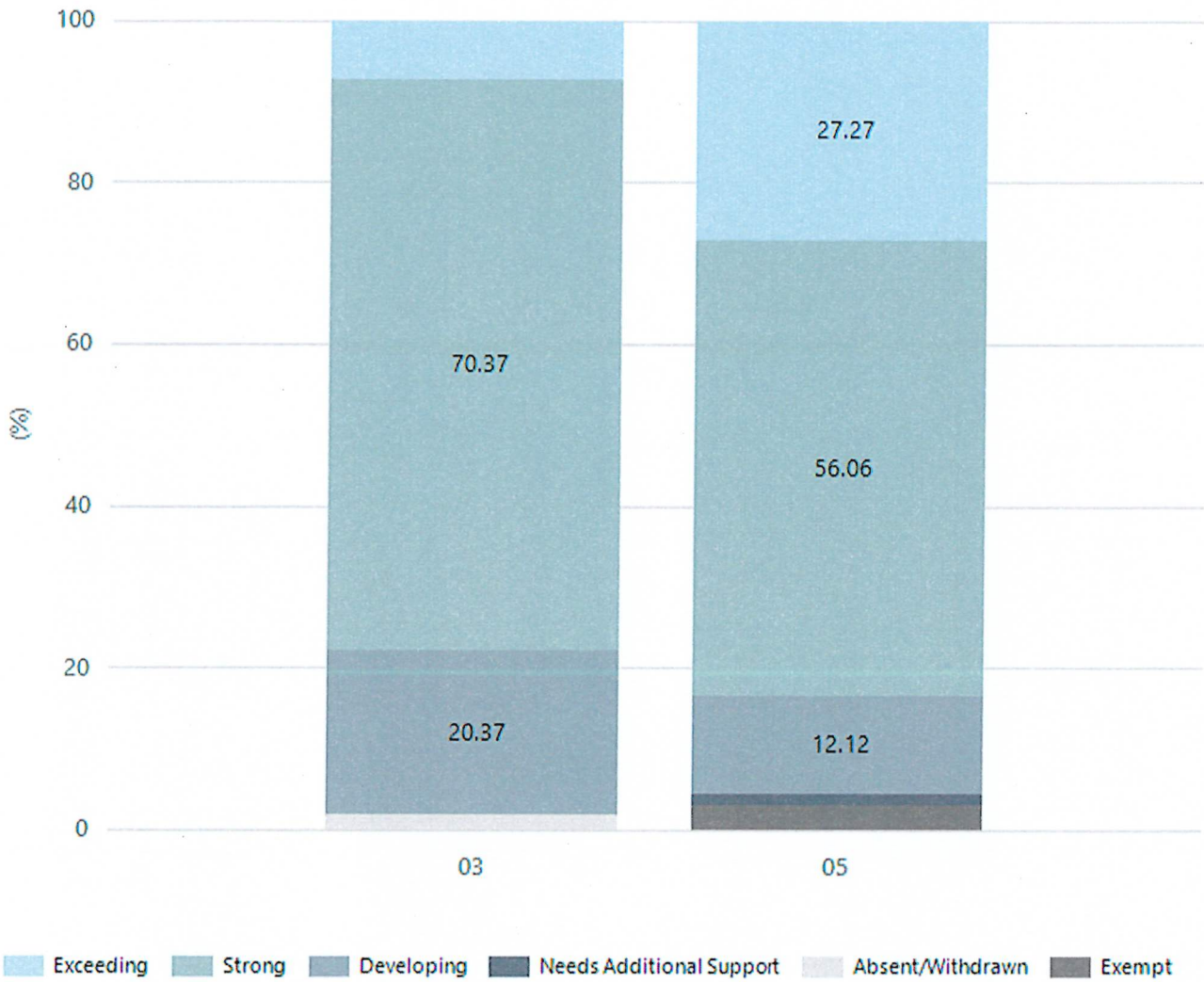
## Reading



Year Level	03	05
Exceeding	2	13
Strong	31	39
Developing	16	11
Needs Additional Support	5	1
Exempt		2
Total	54	66

Data Source: Department for Education Assessment Data Holdings, 2024. If there are less than 6 students who sat NAPLAN in a school, no information will be shown. If a year level has less than 6 students, that year level will not be shown in NAPLAN results.

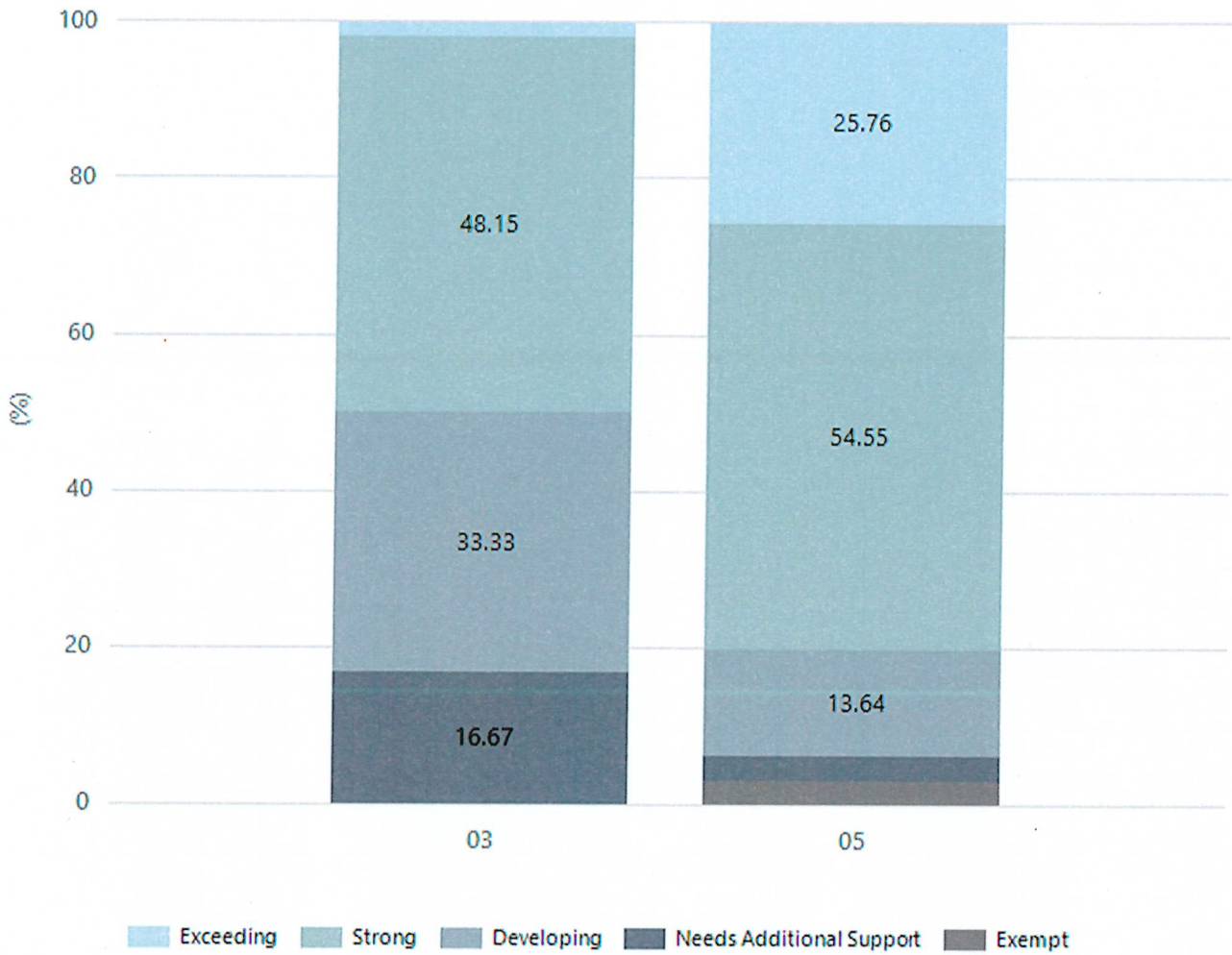
## Writing



Year Level	03	05
Exceeding	4	18
Strong	38	37
Developing	11	8
Needs Additional Support		1
Absent/Withdrawn	1	
Exempt		2
Total	54	66

Data Source: Department for Education Assessment Data Holdings, 2024. If there are less than 6 students who sat NAPLAN in a school, no information will be shown. If a year level has less than 6 students, that year level will not be shown in NAPLAN results.

## Grammar



Year Level	03	05
Exceeding	1	17
Strong	26	36
Developing	18	9
Needs Additional Support	9	2
Exempt		2
Total	54	66

Data Source: Department for Education Assessment Data Holdings, 2024. If there are less than 6 students who sat NAPLAN in a school, no information will be shown. If a year level has less than 6 students, that year level will not be shown in NAPLAN results.