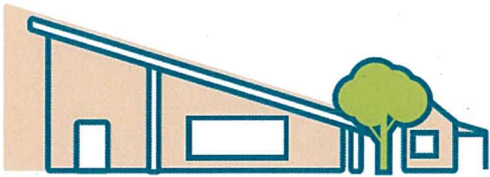




Seaton Park

PRIMARY SCHOOL



2023 annual report to the Community

Seaton Park Primary School

Seaton Park Primary School number: 0397

Partnership: Inner West



School principal:

Amy Johnston

 Signature

Date of endorsement:

27/02/2024



Context Statement

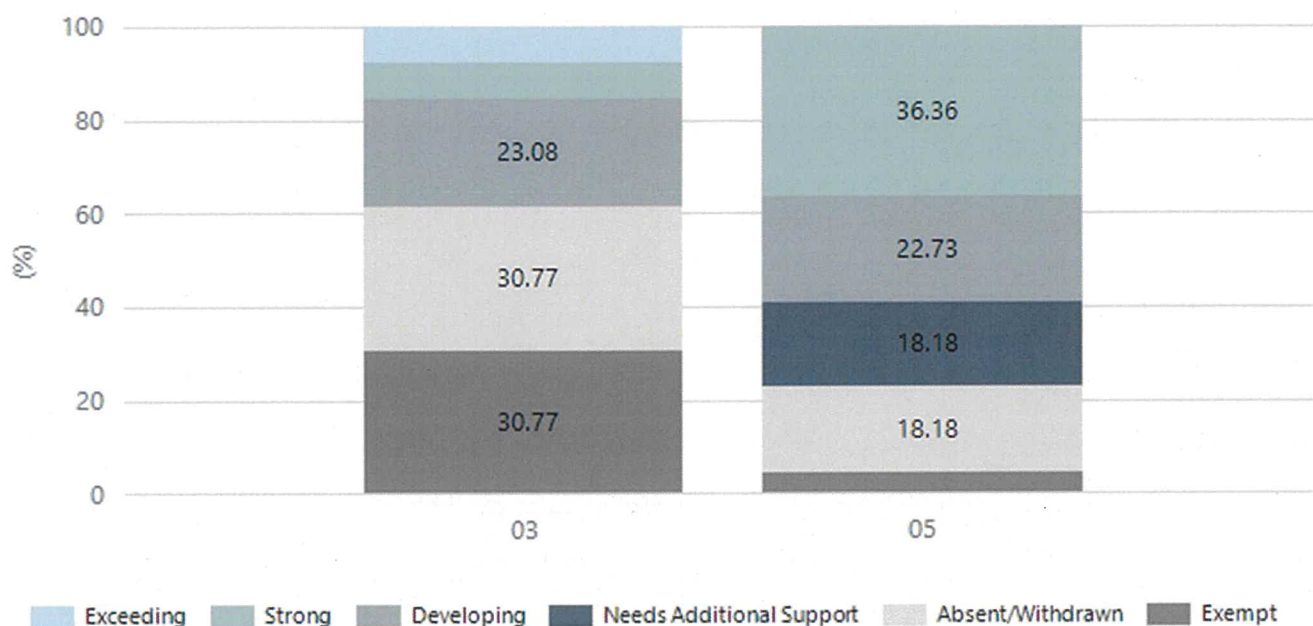
Seaton Park Primary School caters for students from R-6. At the time of this report, the enrolment in 2023 is 134. Seaton Park Primary School is classified as Category 2 on the Department for Education Index of Educational Disadvantage. At the time of this report, the school population includes 12% Aboriginal students, 16% students with disabilities, 27% students with English as an additional language or dialect (EALD) funded background, 4% children/young people in care. Further information about the school is available on the school's website (including its context statement), as well as the My School website.

Performance Summary

NAPLAN Proficiency

In 2023, the Australian Curriculum, Assessment and Reporting Authority (ACARA) - a Commonwealth Independent statutory authority - announced changes to NAPLAN performance reporting. This new way of reporting by ACARA that NAPLAN results from 2023 will not be comparable to previous years. The new approach replaces the previous numerical NAPLAN bands and the national minimum standard.

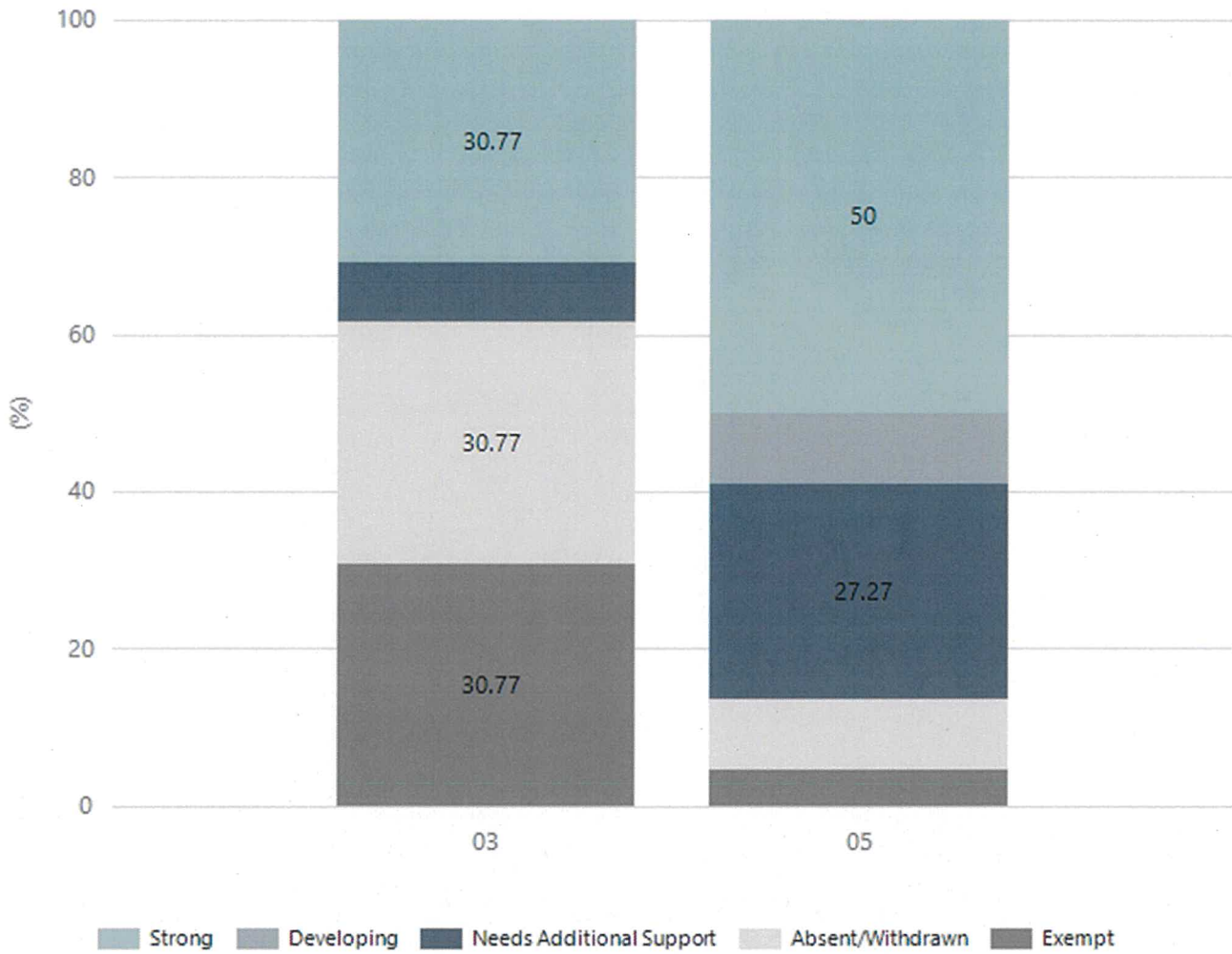
Numeracy



Year Level	03	05
Exceeding	1	
Strong	1	8
Developing	3	5
Needs Additional Support		4
Absent/Withdrawn	4	4
Exempt	4	1
Total	13	22

Data Source: Department for Education Assessment Data Holdings, 2023. When there are less than six students in a cohort, no data is supplied.

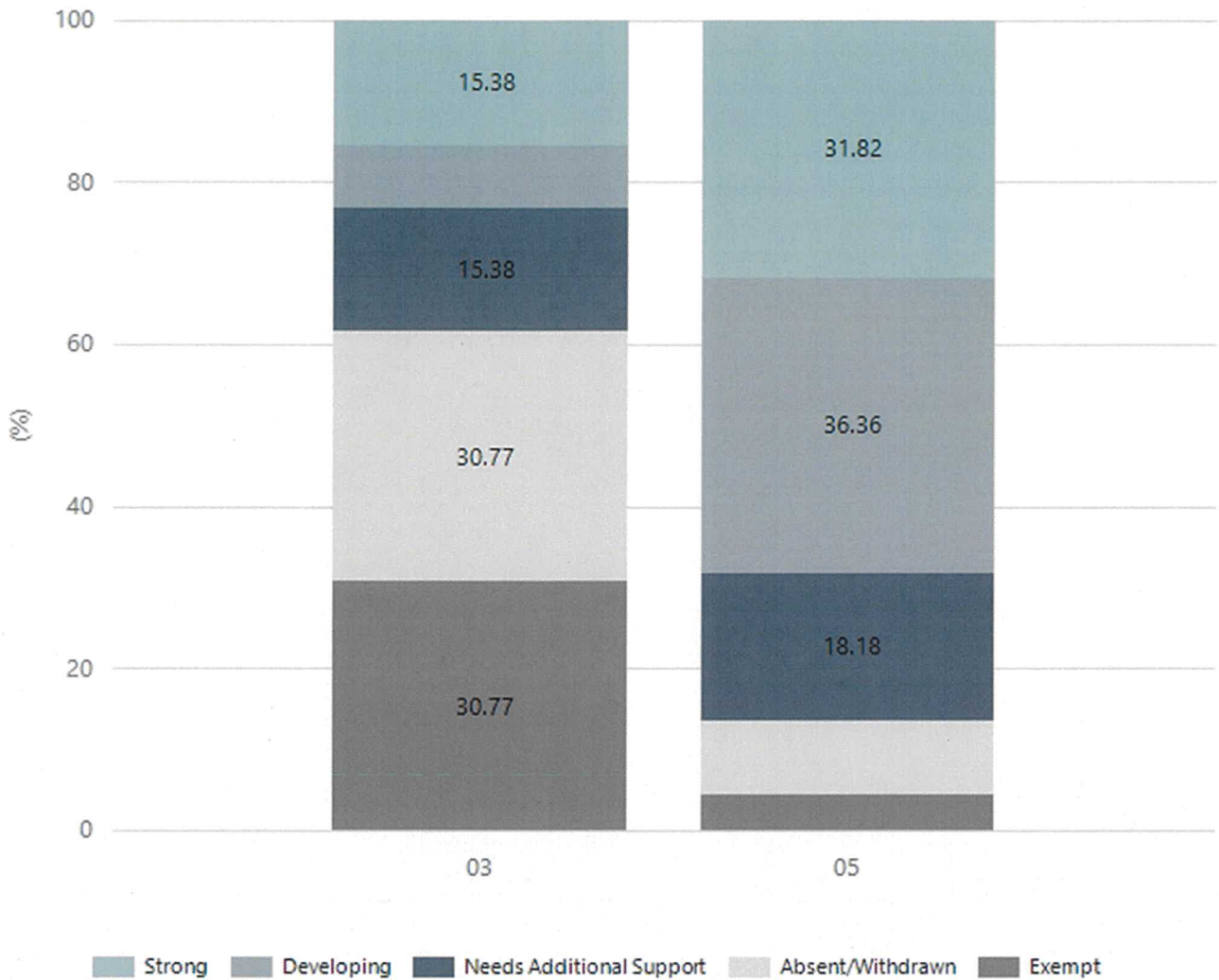
Reading



Year Level	03	05
Strong	4	11
Developing		2
Needs Additional Support	1	6
Absent/Withdrawn	4	2
Exempt	4	1
Total	13	22

Data Source: Department for Education Assessment Data Holdings, 2023. When there are less than six students in a cohort, no data is supplied.

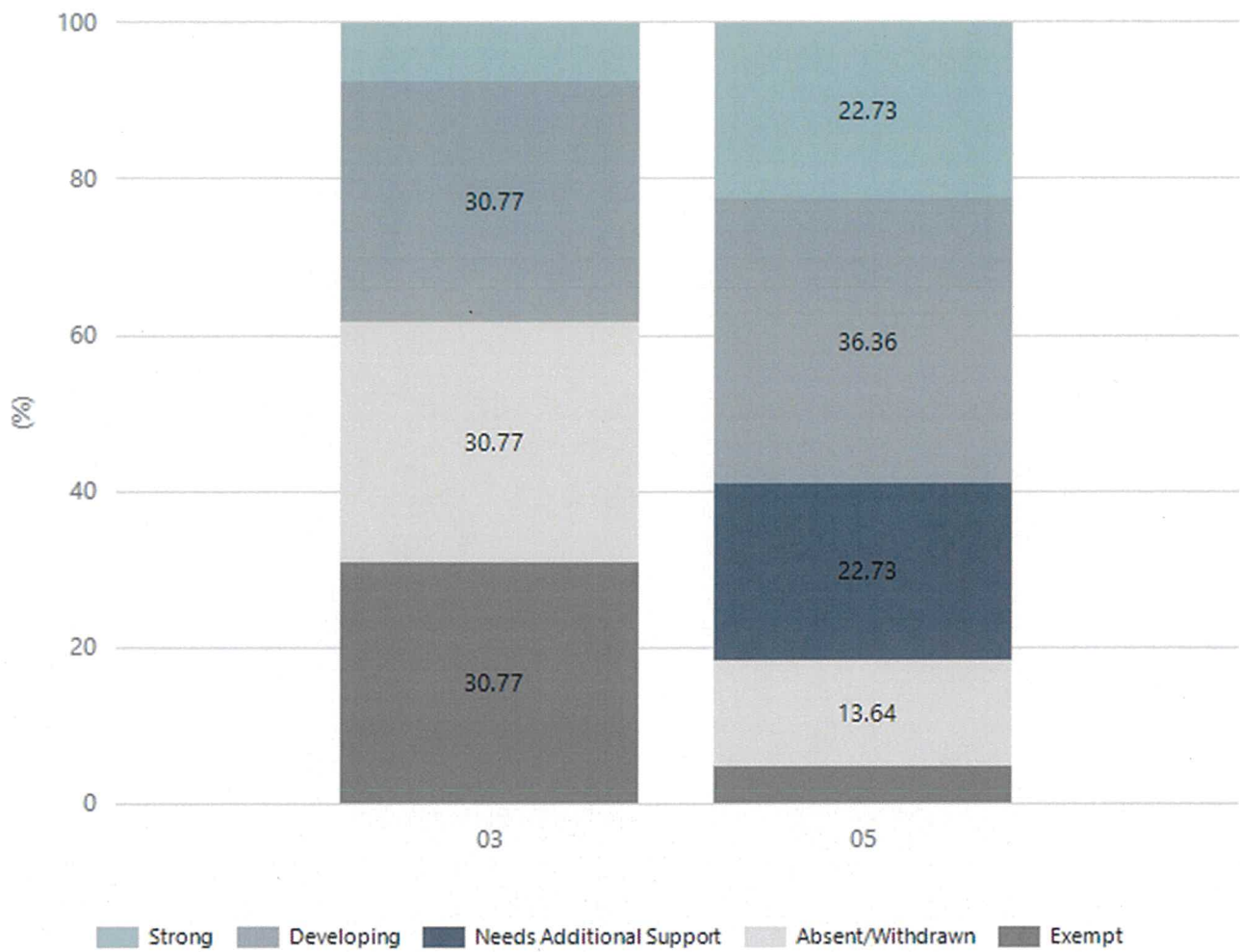
Writing



Year Level	03	05
Strong	2	7
Developing	1	8
Needs Additional Support	2	4
Absent/Withdrawn	4	2
Exempt	4	1
Total	13	22

Data Source: Department for Education Assessment Data Holdings, 2023. When there are less than six students in a cohort, no data is supplied.

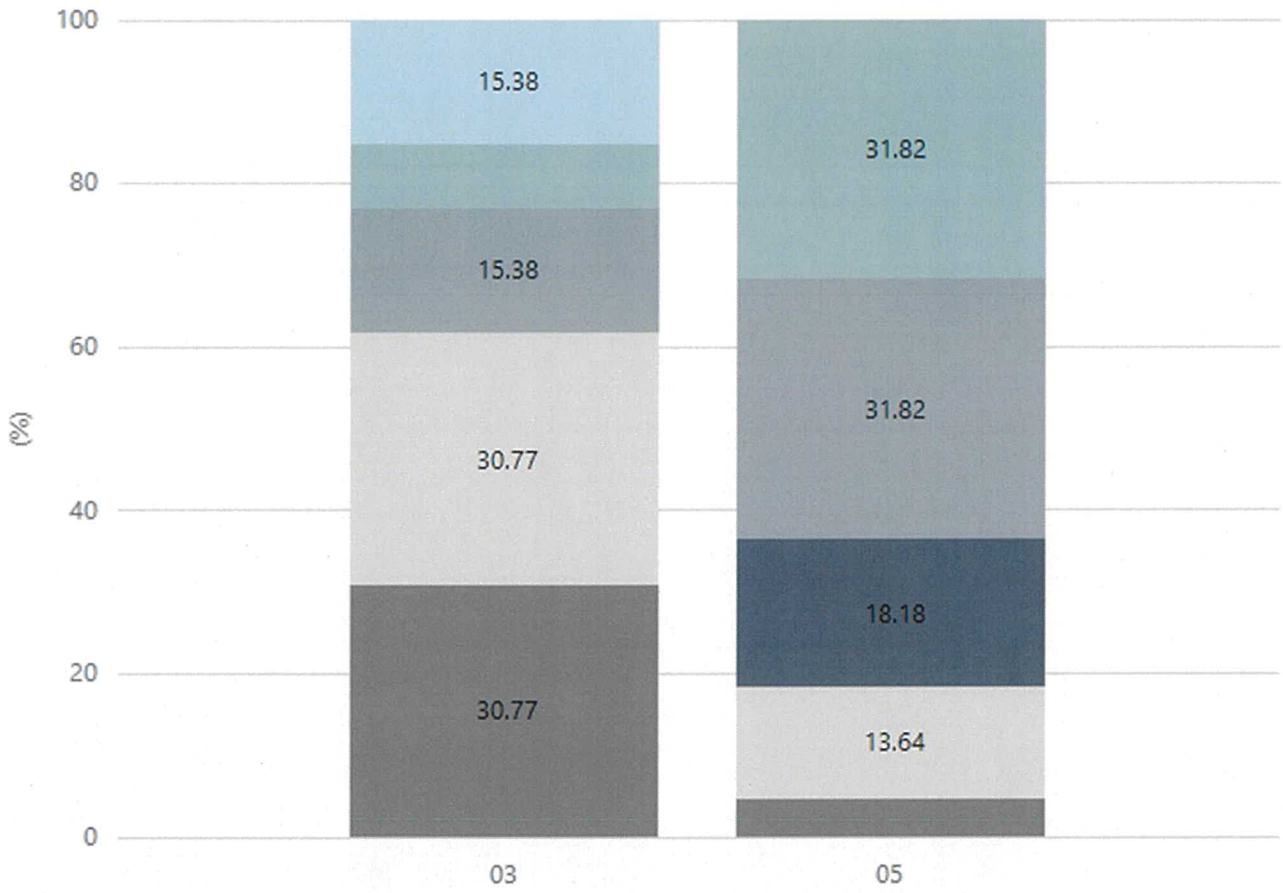
Grammar



Year Level	03	05
Strong	1	5
Developing	4	8
Needs Additional Support		5
Absent/Withdrawn	4	3
Exempt	4	1
Total	13	22

Data Source: Department for Education Assessment Data Holdings, 2023. When there are less than six students in a cohort, no data is supplied.

Spelling



■ Exceeding
 ■ Strong
 ■ Developing
 ■ Needs Additional Support
 ■ Absent/Withdrawn
 ■ Exempt

Year Level	03	05
Exceeding	2	
Strong	1	7
Developing	2	7
Needs Additional Support		4
Absent/Withdrawn	4	3
Exempt	4	1
Total	13	22

Data Source: Department for Education Assessment Data Holdings, 2023. When there are less than six students in a cohort, no data is supplied.

School Attendance

Year Level	2021	2022	2023
Reception	90.5%	78.7%	90.1%
Year 01	88.2%	75.9%	91.0%
Year 02	80.2%	69.6%	89.2%
Year 03	88.8%	67.2%	88.9%
Year 04	83.8%	83.3%	89.9%
Year 05	74.4%	77.7%	92.5%
Year 06	90.8%	75.2%	91.5%
Year 07	83.6%		
Primary Other	84.9%	79.1%	96.0%
Total	85.8%	76.3%	92.2%

Data Source: Department for Education Attendance Data, Semester 1 Report 2023. A blank cell indicates there were no students enrolled. 'Primary Other' includes students enrolled in specialised education options. 'Secondary Other' includes students who have already spent a year at Year 12 and elected to undertake further study at Year 12.

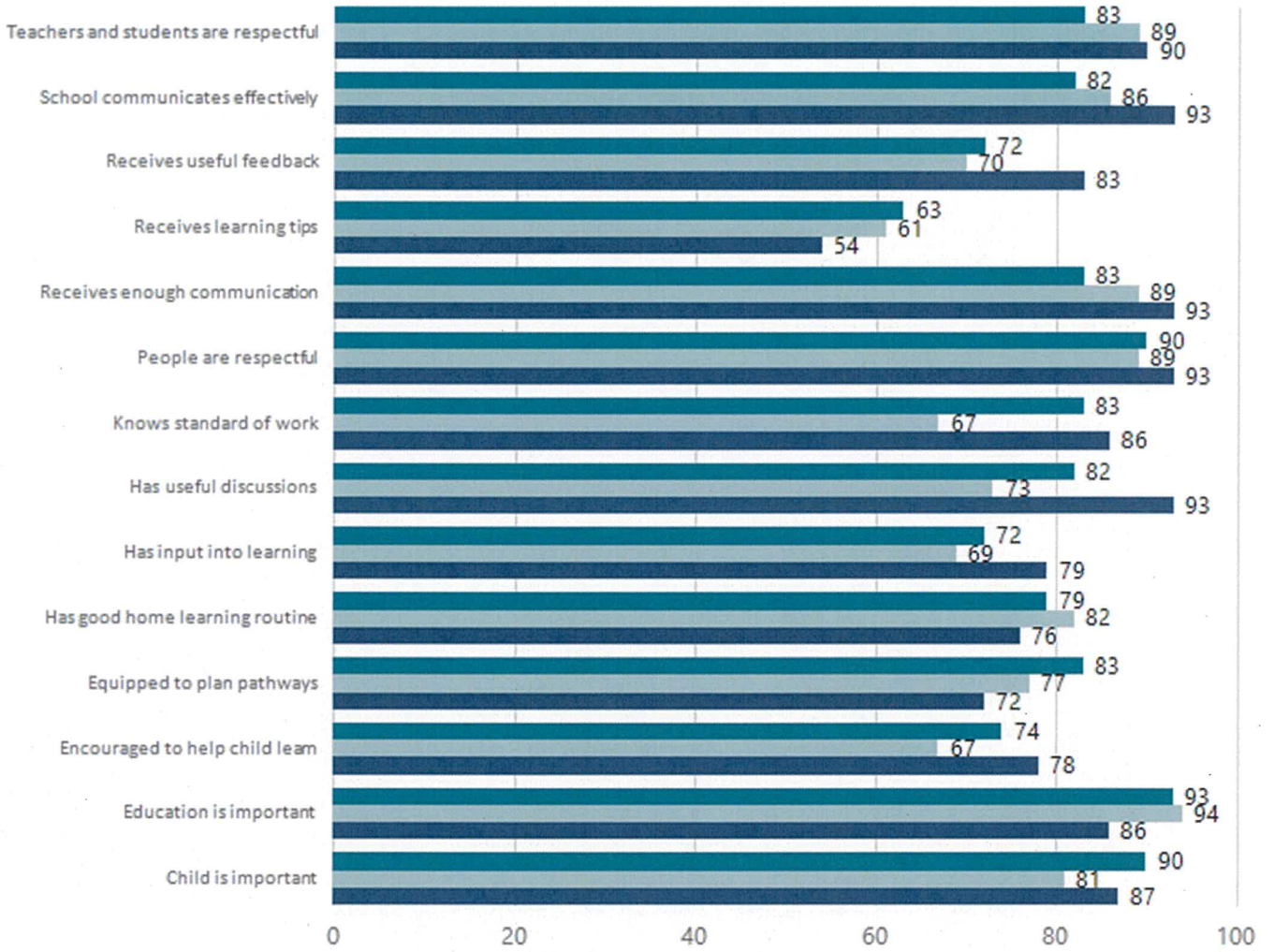
Attendance Comment

In South Australia, all children and young people must be in school from 6 years to 16 years old. They must attend a government or non-government school full time. From age 16 to 17 however, young people must attend school or an approved learning program (such as an apprenticeship, traineeship, accredited course or university). Schools and parents must encourage and support students to come to school every day. Parents and caregivers must make sure their child is enrolled in a school, and attends school all day and everyday it is open, unless a child is sick or has an approved exemption. Teachers and leaders actively follow up when a student misses school, including recording all absences and non-attendance. All schools in South Australia have local attendance procedures governed under the Education and Children's Services Regulations 2020.

Parent Opinion Survey Results

Proportion of agree/strongly agree response(%)

2021 2022 2023



Data Source: 2023 Department for Education Parent Opinions Survey, Term 3 2023.

Intended Destination

Leave Reason	Number	%
NG - ATTENDING NON-GOV SCHOOL IN SA	1	13.0%
OV - LEFT SA FOR OVERSEAS	1	13.0%
TG - TRANSFERRED TO SA GOVERNMENT SCHOOL	6	75.0%

Data Source: Department for Education Destination Data Report, 2023. Data extract term 3 2023. Data shows recorded destinations for students that left the school in the previous year. Data is uploaded by schools in term 3 and may not reflect final or total figures at time of report creation.

Highest Qualifications held by the teaching workforce and workforce composition

All teachers at this school are qualified and registered with the SA Teachers Registration Board.

Qualification Level	Number of Qualifications
Bachelor's degrees or Diplomas	12
Postgraduate Qualifications	5

Data Source: Data extracted from Mandatory Workforce Information Collections as on the last pay date of June 2023. As self-reported by staff in the system.

Please note: Data includes staff who are Actively employed and on extended paid leave. Please note only the highest qualification of the Teaching staff is reported. Excludes any number of other certifications earned.

Workforce composition including indigenous staff

	Teaching Staff		Non-Teaching Staff	
	Indigenous	Non-Indigenous	Indigenous	Non-Indigenous
Full-Time Equivalents	0.0	15.0	0.8	6.8
Persons	0.0	17.0	1.0	9.0

Data Source: Data extracted from Mandatory Workforce Information Collection as on the last pay date of June 2023.

Please note: Data includes staff who are actively employed and on extended paid leave. "Indigenous category" is self-reported by staff in the system.

Financial Statement

Funding Source	Amount
Grants: State	0
Grants: Commonwealth	32500
Parent Contributions	24811
Fund Raising	2129
Other	58696

Data Source: School supplied data.

Governing council report

The year 2023 was a year filled with excitement and progress for the Seaton Park Primary School (SPPS) Governing Council. We bid farewell to our former council members, Thomas Doerfer, Asha Mathew, and Abii Mehzer, and warmly welcomed Trina Light and Summer Kirby to the team. Additionally, we were pleased to announce the appointment of Tammy Awege as the Treasurer for the council.

Throughout the year, the governing council diligently convened twice per term to address important matters and drive positive changes within the school community. One notable accomplishment was our active involvement in the development of the Out of School Hours Care (OSHC) program, which commenced in Term One. Although the program could not be sustained by our chosen provider, we remain committed to exploring alternative solutions to meet the needs of our students and families. As a governing council, we also undertook the responsibility of approving the school's budget, facility hire fees, pupil-free days, and school materials and services fees, ensuring the smooth functioning of our educational institution.

We are proud to highlight that the Charles Sturt Council took notice of our concerns regarding traffic movements during school drop off and pick up times. They conducted investigations and monitored the situation, and we eagerly anticipate the implementation of changes in 2024 that will enhance the safety and convenience for our school community.

Overall, the year 2023 was marked by numerous achievements for the SPPS community, made possible through the collaborative efforts of our dedicated governing council and school staff. We look forward to the coming year with great anticipation, as we expect to accomplish even more and continue to foster a thriving learning environment. We extend an open invitation to all interested individuals to join our governing council, as we believe that diverse perspectives and expertise will further enrich our collective efforts.

On behalf of the SPPS Governing Council, I would like to express my gratitude to the entire school community for their unwavering support and commitment to our shared goals.

Sincerely,
David Blackeby
Chairperson, SPPS Governing Council