



2024 annual report to the Community

Goodwood Primary School and Goodwood Preschool

Goodwood Primary School number: 156

Goodwood Preschool number: 1583

Partnership: Greenhill South



School principal:

Belinda Adams

Date of endorsement:

03/04/2025



Government
of South Australia
Department for Education

Context Statement

Goodwood Primary School and Preschool caters for students from Preschool-6. At the time of this report, the enrolment in 2024 is 414 and 43 at preschool. Goodwood Primary School and Preschool is classified as Category 7 on the Department for Education Index of Educational Disadvantage. At the time of this report, the school population includes 1% Aboriginal students, 7% students with disabilities, 22% students with English as an additional language or dialect (EALD) funded background, 1% children/young people in care. Further information about the school and preschool is available on the site's website (including its context statement), as well as the My School website and the Australian Children's Education and Care Quality Authority (ACECQA) website.

Data Source: Department for Education data holdings from Mid census captured in AUGUST 2024.

Governing Council Report

On behalf of the Goodwood Primary School and Preschool Governing Council, it is a pleasure to present an overview of the Council's activities and achievements for 2024.

As always, we were fortunate to have fantastic support and engagement from our community including at a range of community events such as Quiz Night, Halloween Disco and Farmers Market which - along with Sports Day, Harmony Day, wine fundraisers and Come and Connect gatherings - provided various opportunities for the community to be together and, in some cases, to raise much needed funds for the school. Thank you to our Community and Events Committee for their efforts and the many volunteers who supported these activities. Our Education and Wellbeing and Facilities, Environment and Sustainability Committees also supported opportunities for community engagement with parent information sessions and working bees.

In addition to our ongoing focus on community connection and parent engagement, key priority areas for the Governing Council this year included fostering and developing our out of school hours activity program. The school offers an outstanding sports program which continued to grow and evolve during 2024. There was fantastic collaboration between parents and teachers to facilitate many inter-school sports events which were well supported and a highlight for students participating. The Governing Council has also commenced work on creating a structure to expand the activity program to activities other than sports with a drama class trialled in term 4. Thank you to our OSCHARA Committee and many volunteers who support as convenors, coaches and team managers to deliver our fantastic sports program. We look forward to its continued success and the ongoing expansion of activities offered.

Our other key priority for the year related to school crossing safety. We have continued to advocate for improvements in safety measures at the Goodwood Road crossing and were thrilled to see a petition supporting safety initiatives table in state parliament late in the year followed up with an onsite meeting between parents, leadership and the Department of Infrastructure and Transport. Thank you to the Governing Council and community members who led this advocacy and the petition - we look forward to the implementation of these measures during 2025.

Thank you to all members of the Governing Council and subcommittees. It is a privilege to serve alongside such an engaged and enthusiastic group. I would like to acknowledge retiring members – Eleanor Bersten, Daniel Brock, Tahlia Harman and Luke Selth – and thank them for their many and varied contributions to the Governing Council and school community. I look forward to working with the continuing members of the Governing Council and Subcommittees and to welcoming new members in 2025.

I want to acknowledge and thank our leadership, teachers and support staff for their incredible efforts over the past year. We are so lucky to have such a dedicated, energetic and passionate team educating and supporting our children.

Finally, thank you to everyone in our community who contributed to the many achievements and successes of the year. We are so very fortunate to be part of this wonderful community and have much to look forward to in the coming year and beyond.

Amanda Devonish

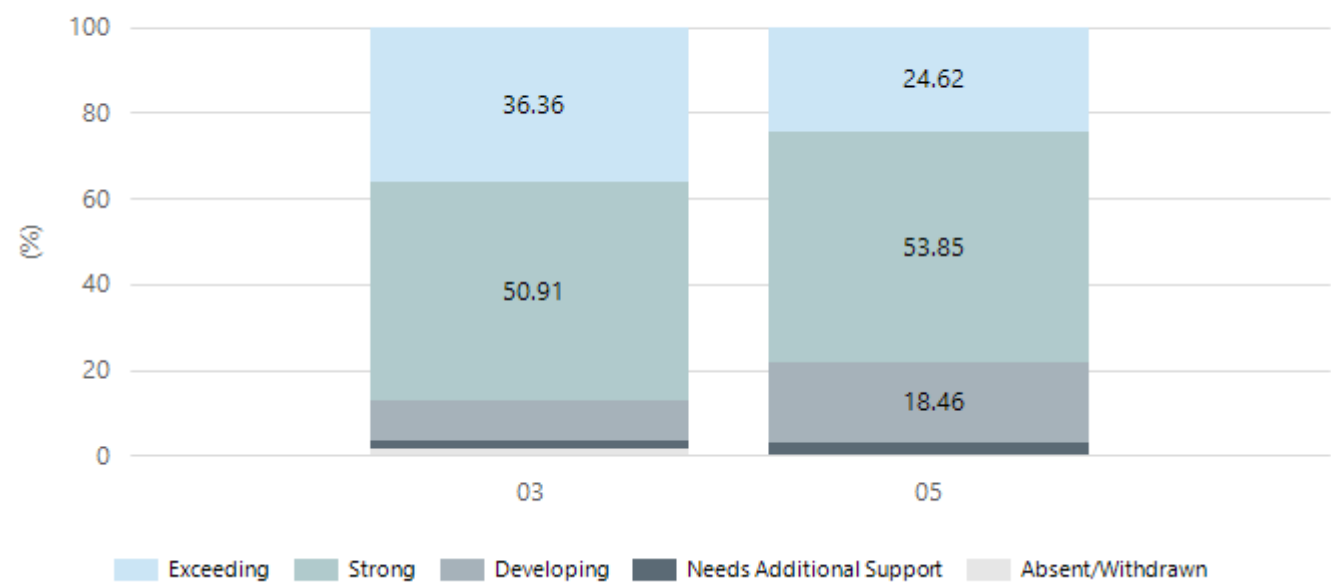
Chair

Goodwood Primary School Governing Council

NAPLAN Proficiency

In 2023 the Australian Curriculum, Assessment and Reporting Authority (ACARA) - a Commonwealth Independent statutory authority - announced changes to NAPLAN performance reporting. The new approach replaces the previous numerical NAPLAN bands and the national minimum standard.

Numeracy



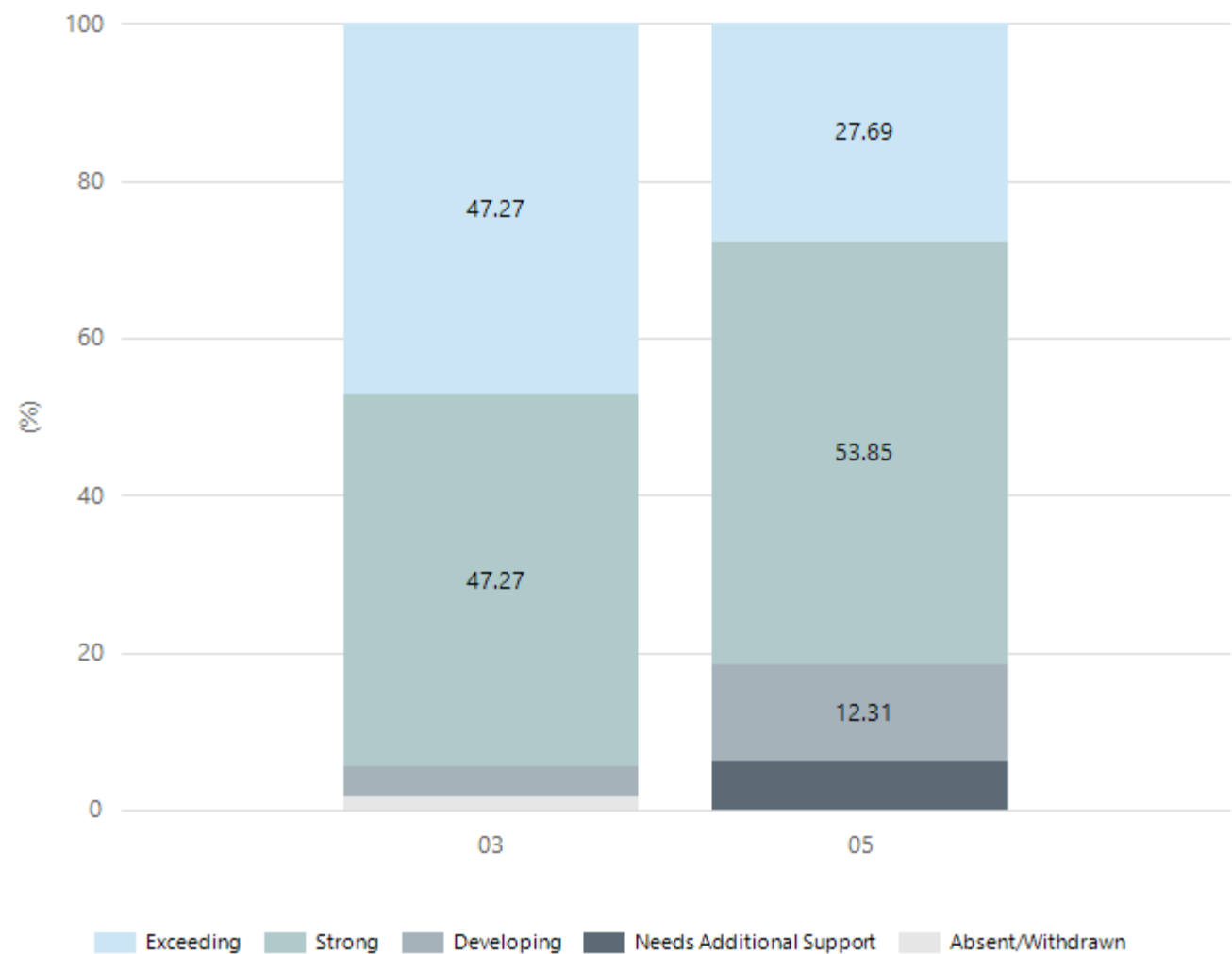
Year Level	03	05
Exceeding	20	16
Strong	28	35
Developing	5	12
Needs Additional Support	1	2
Absent/Withdrawn	1	
Total	55	65

Data Source: Department for Education Assessment Data Holdings, 2024. If there are less than 6 students who sat NAPLAN in a school, no information will be shown. If a year level has less than 6 students, that year level will not be shown in NAPLAN results.

PAT Maths (PAT M)

- 9 students in year 6 were re-assigned to a higher year level test, with 3 hitting the High Achievement Band for year 9
- 1 Year 5 student hit the High Achievement Band for year 9
- 1 Year 3 student hit the Strong/High Range Band in the year 4 PAT M test
- 1 Year 2 student hit the High Achievement Band in the year 3 PAT M test
- 10 students from Year 2 to Year 6 exceeded the High Achievement Band at their year level in PAT M tests

Reading



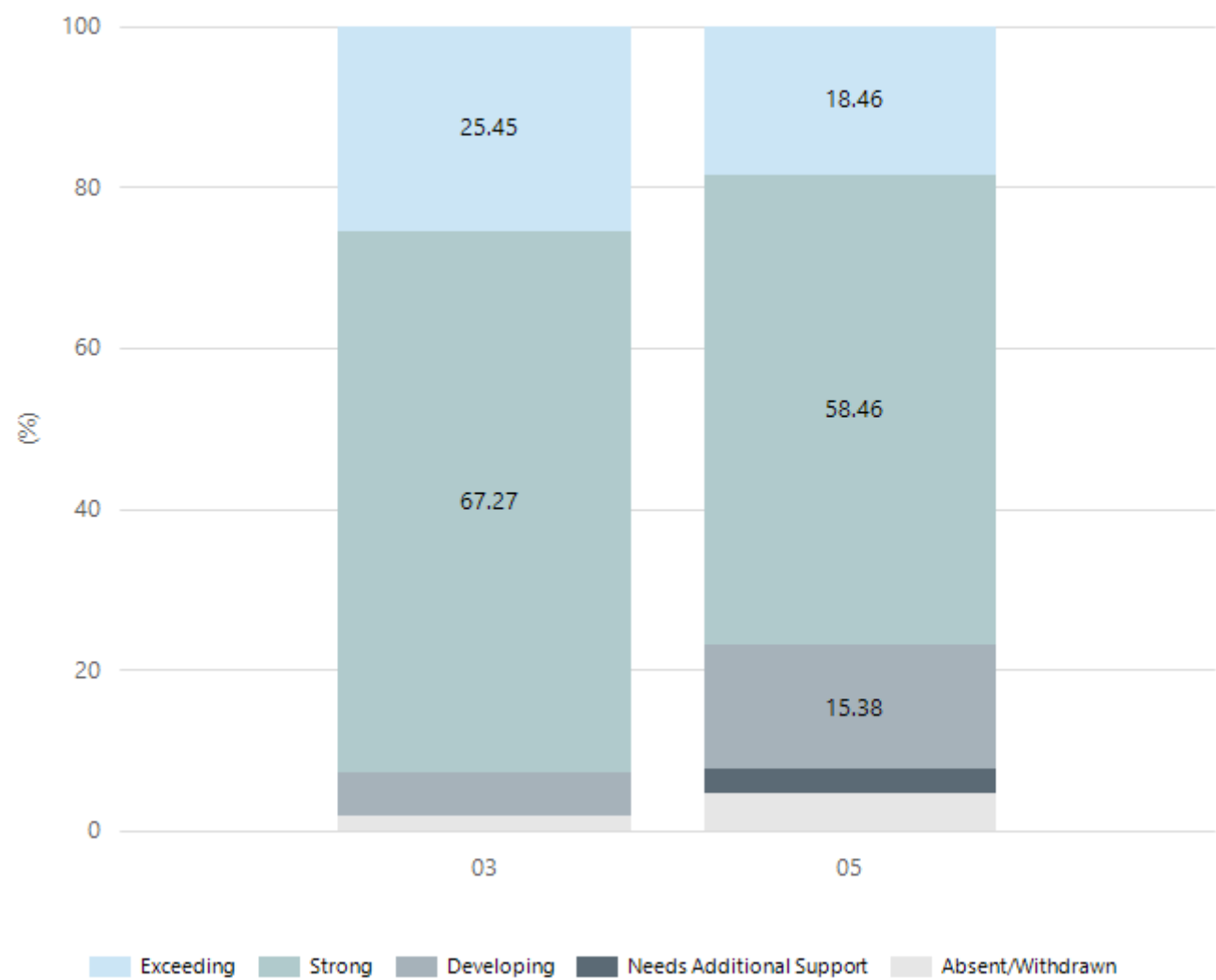
Year Level	03	05
Exceeding	26	18
Strong	26	35
Developing	2	8
Needs Additional Support		4
Absent/Withdrawn	1	
Total	55	65

Data Source: Department for Education Assessment Data Holdings, 2024. If there are less than 6 students who sat NAPLAN in a school, no information will be shown. If a year level has less than 6 students, that year level will not be shown in NAPLAN results.

Phonics Screening Check

In 2024, 87.5% of students achieved benchmark or above with 57.8% scoring 35 or more out of 40.

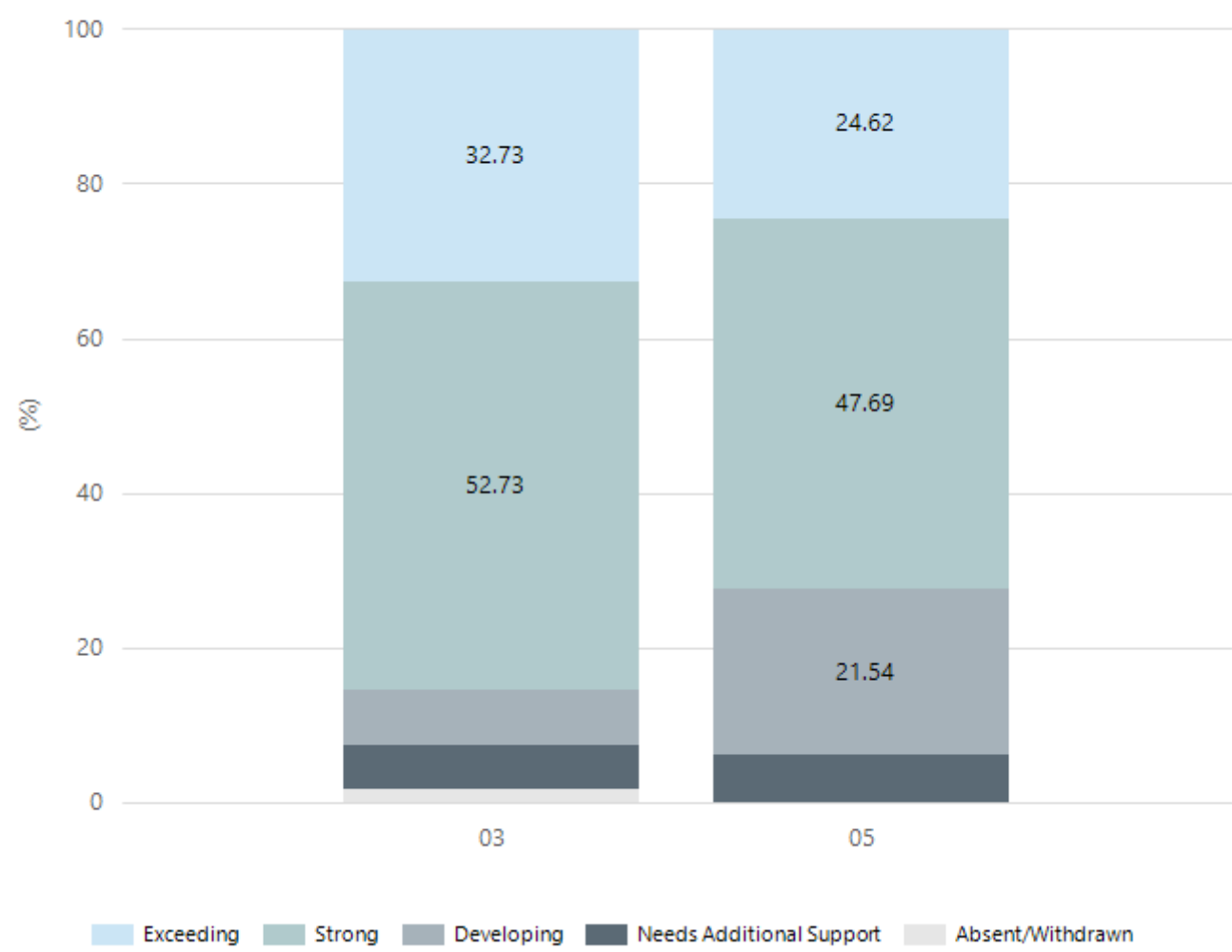
Writing



Year Level	03	05
Exceeding	14	12
Strong	37	38
Developing	3	10
Needs Additional Support		2
Absent/Withdrawn	1	3
Total	55	65

Data Source: Department for Education Assessment Data Holdings, 2024. If there are less than 6 students who sat NAPLAN in a school, no information will be shown. If a year level has less than 6 students, that year level will not be shown in NAPLAN results.

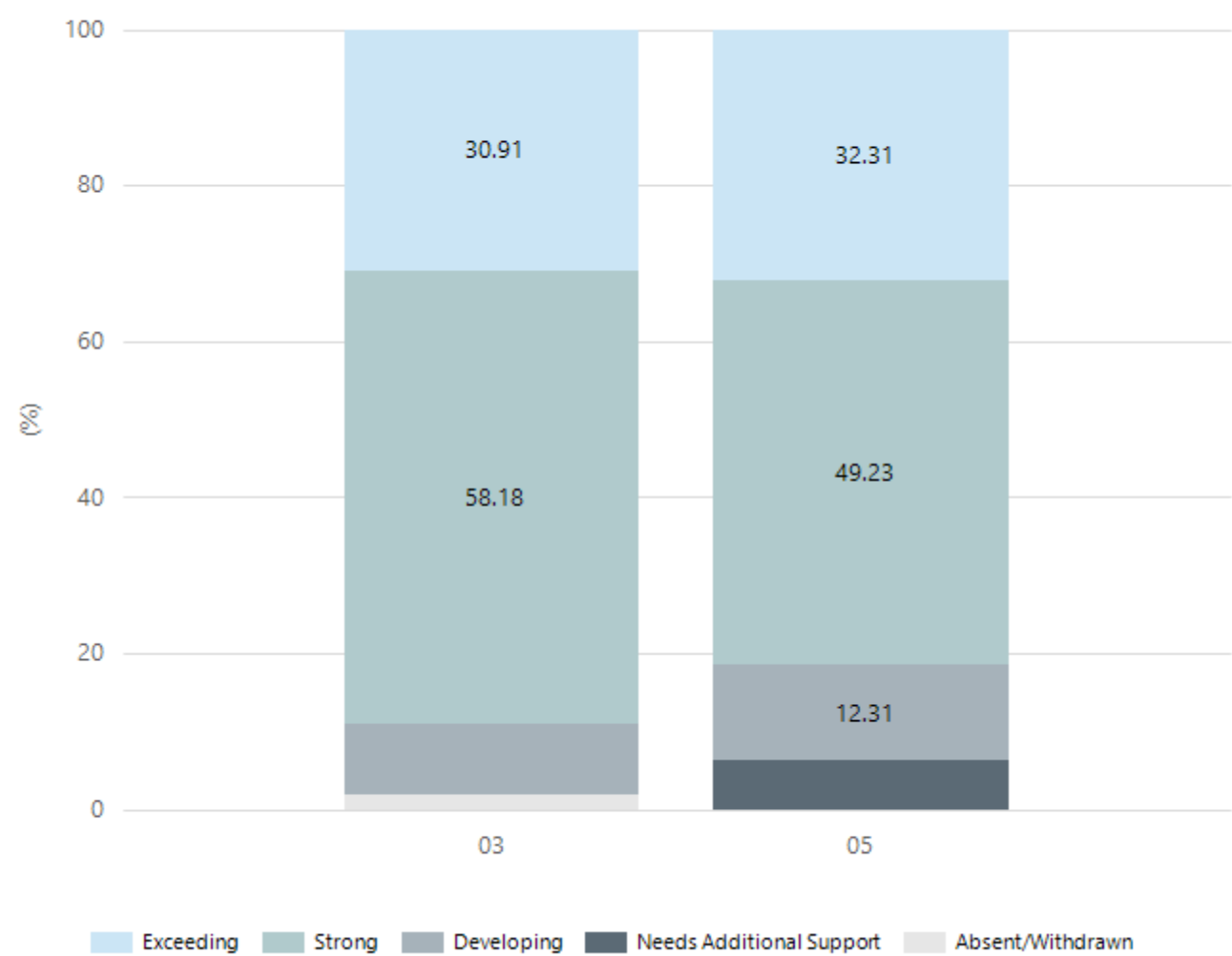
Grammar



Year Level	03	05
Exceeding	18	16
Strong	29	31
Developing	4	14
Needs Additional Support	3	4
Absent/Withdrawn	1	
Total	55	65

Data Source: Department for Education Assessment Data Holdings, 2024. If there are less than 6 students who sat NAPLAN in a school, no information will be shown. If a year level has less than 6 students, that year level will not be shown in NAPLAN results.

Spelling



Year Level	03	05
Exceeding	17	21
Strong	32	32
Developing	5	8
Needs Additional Support		4
Absent/Withdrawn	1	
Total	55	65

Data Source: Department for Education Assessment Data Holdings, 2024. If there are less than 6 students who sat NAPLAN in a school, no information will be shown. If a year level has less than 6 students, that year level will not be shown in NAPLAN results.

Preschool Attendance

	Term 1	Term 2	Term 3	Term 4
2021 centre	93.9%	92.6%	95.8%	92.1%
2022 centre	90.5%	81.3%	82.4%	92%
2023 centre	90%	81.3%	92.3%	90.8%
2024 centre	89.2%		86.4%	

Based on attendances recorded in the two-week reference period each term. Data for eligible enrolments as described in the department's Enrolment policy. Attendance rates may differ to previous reporting with the transfer from calculations based on deemed attendance to actual attendance using booked hours divided by attended hours. Data Source: Department for Education Attendance Data, Semester 1 Report 2024. A blank cell indicates there we no students enrolled.

School Attendance

Year Level	2022	2023	2024
Reception	91.5%	94.3%	93.2%
Year 01	91.5%	90.0%	94.5%
Year 02	89.3%	93.9%	94.8%
Year 03	91.0%	89.7%	92.8%
Year 04	89.7%	91.3%	92.7%
Year 05	91.1%	89.5%	92.1%
Year 06	91.6%	90.7%	92.4%
Total	90.8%	91.4%	93.3%

Data Source: Department for Education Attendance Data, Semester 1 Report 2024. A blank cell indicates there we no students enrolled. 'Primary Other' includes students enrolled in specialised education options. 'Secondary Other' includes students who have already spent a year at Year 12 and elected to undertake further study at Year 12.

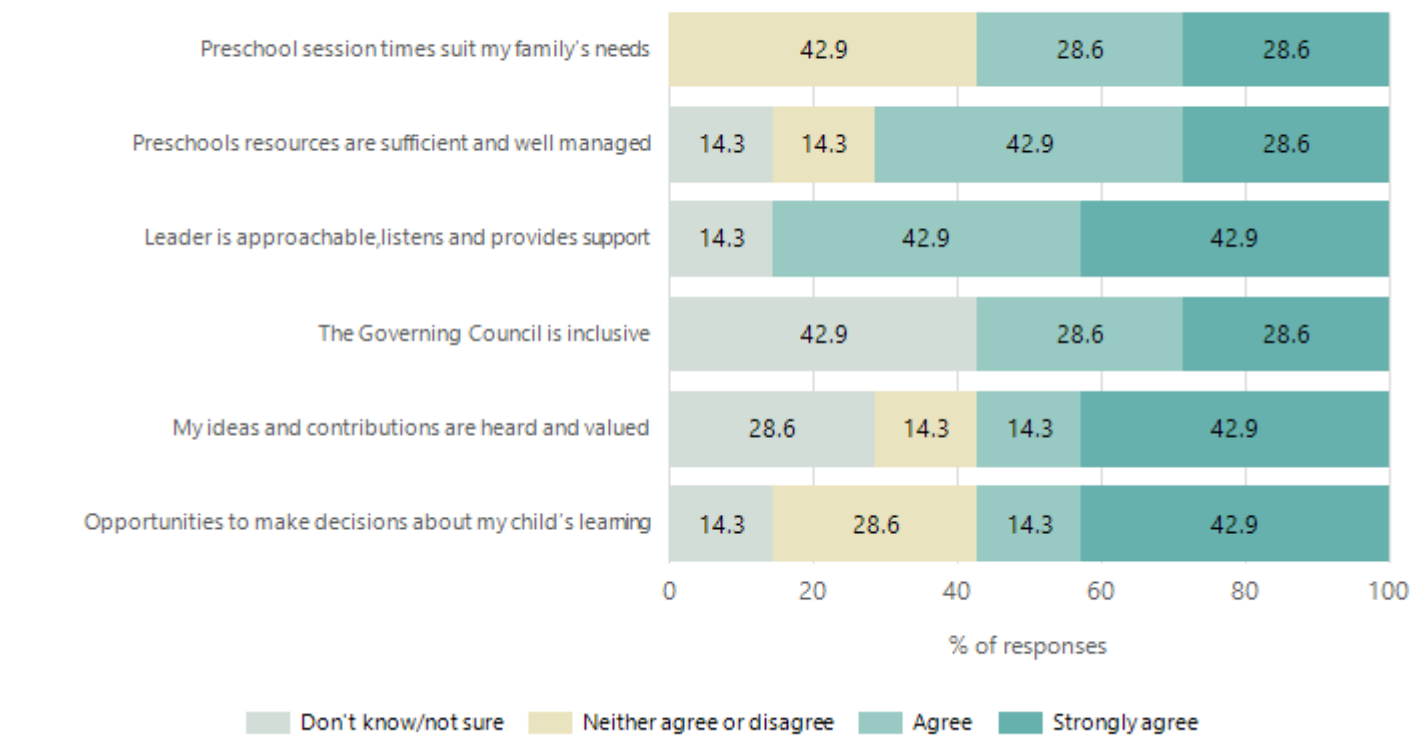
Attendance Comment

In South Australia, preschool attendance is not compulsory, but it is strongly encouraged. Preschool gives children the best opportunity to develop skills, which prepare them for school. These benefits include establishing positive routines and habits, friendships and connections as well as developing communication, problem-solving and creative skills. All children are entitled to access a preschool program over 4 terms the year before they start school.

In South Australia, all children and young people must be in school from 6 years to 16 years old. They must attend a government or non-government school full time. From age 16 to 17 however, young people must attend school or an approved learning program (such as an apprenticeship, traineeship, accredited course or university). Schools and parents must encourage and support students to come to school every day. Parents and caregivers must make sure their child is enrolled in a school, and attends school all day and everyday it is open, unless a child is sick or has an approved exemption. Teachers and leaders actively follow up when a student misses school, including recording all absences and non-attendance. All schools in South Australia have local attendance procedures governed under the Education and Children's Services Regulations 2020.

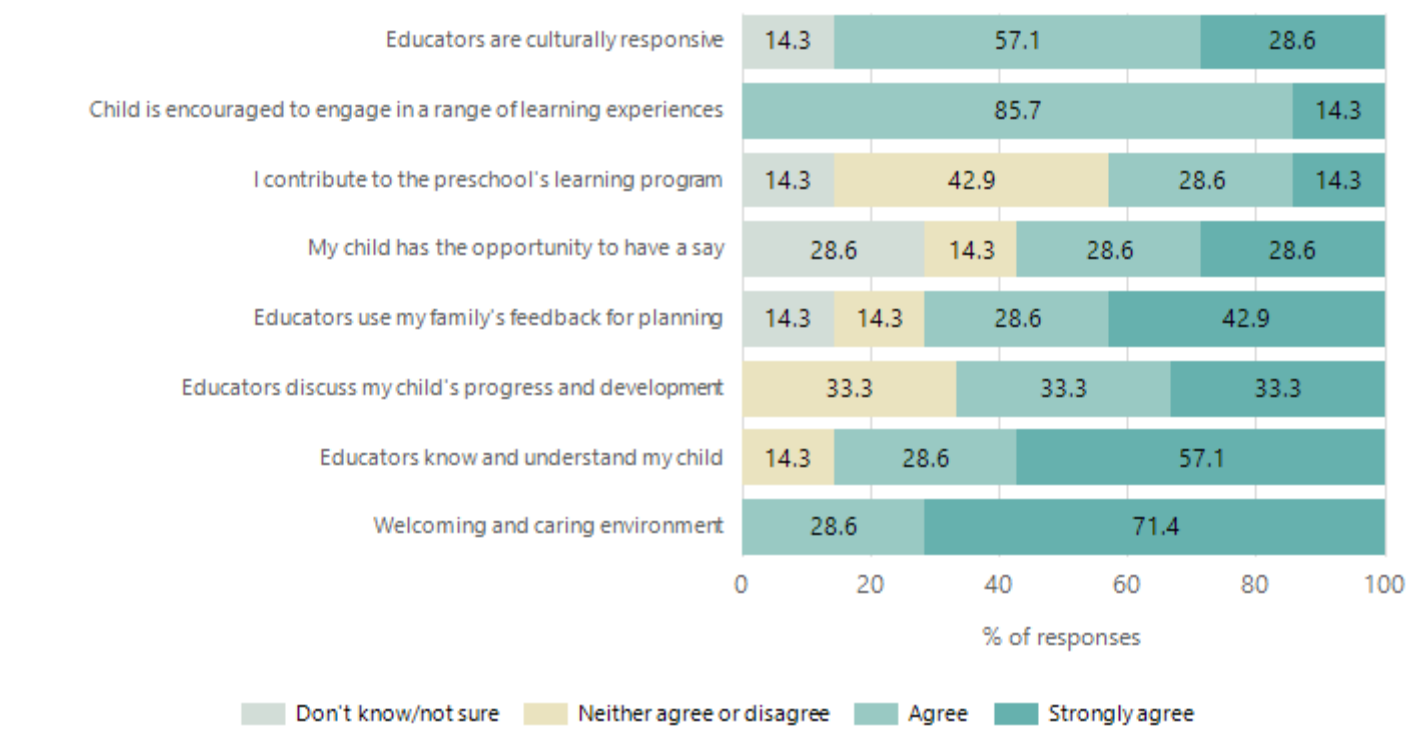
Preschool Family Opinion Survey

Governance, Leadership and Management



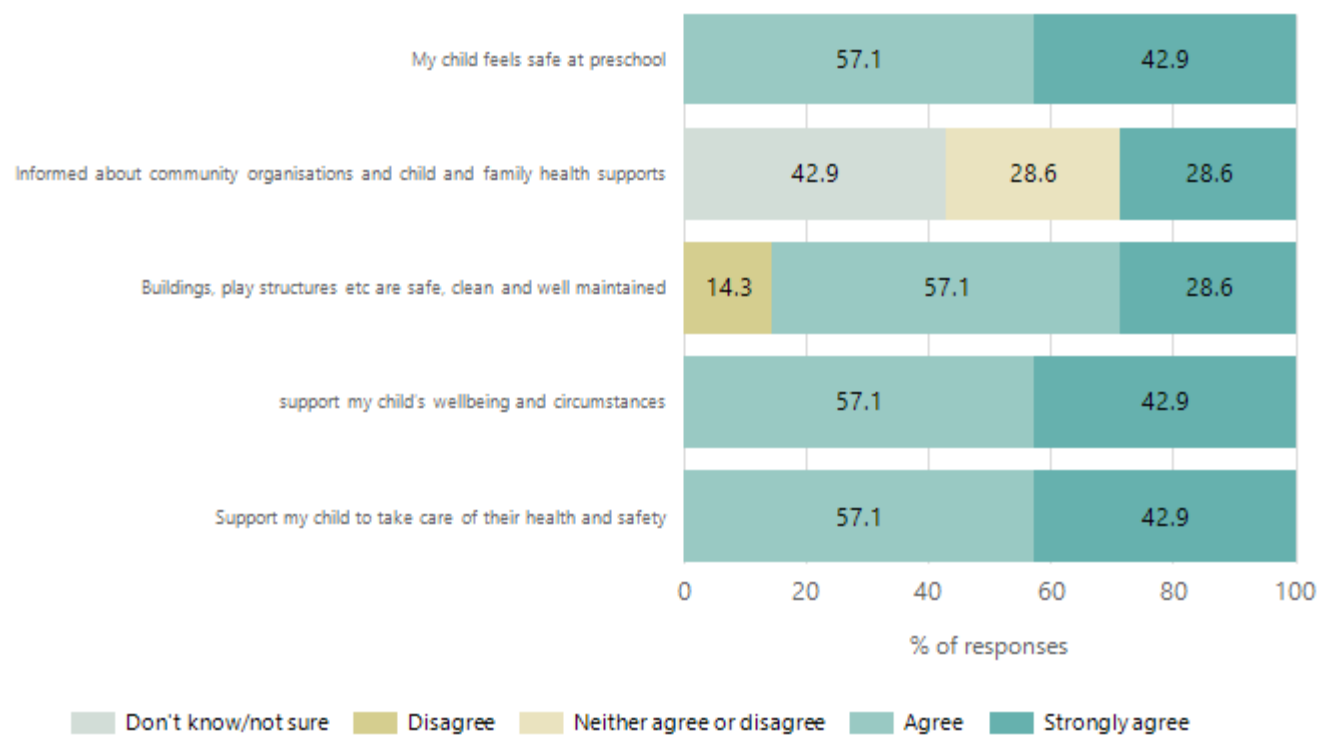
Data Source: 2024 Department for Education Preschool Family Opinions Survey, Term 3 2024.

Quality of Teaching and Learning



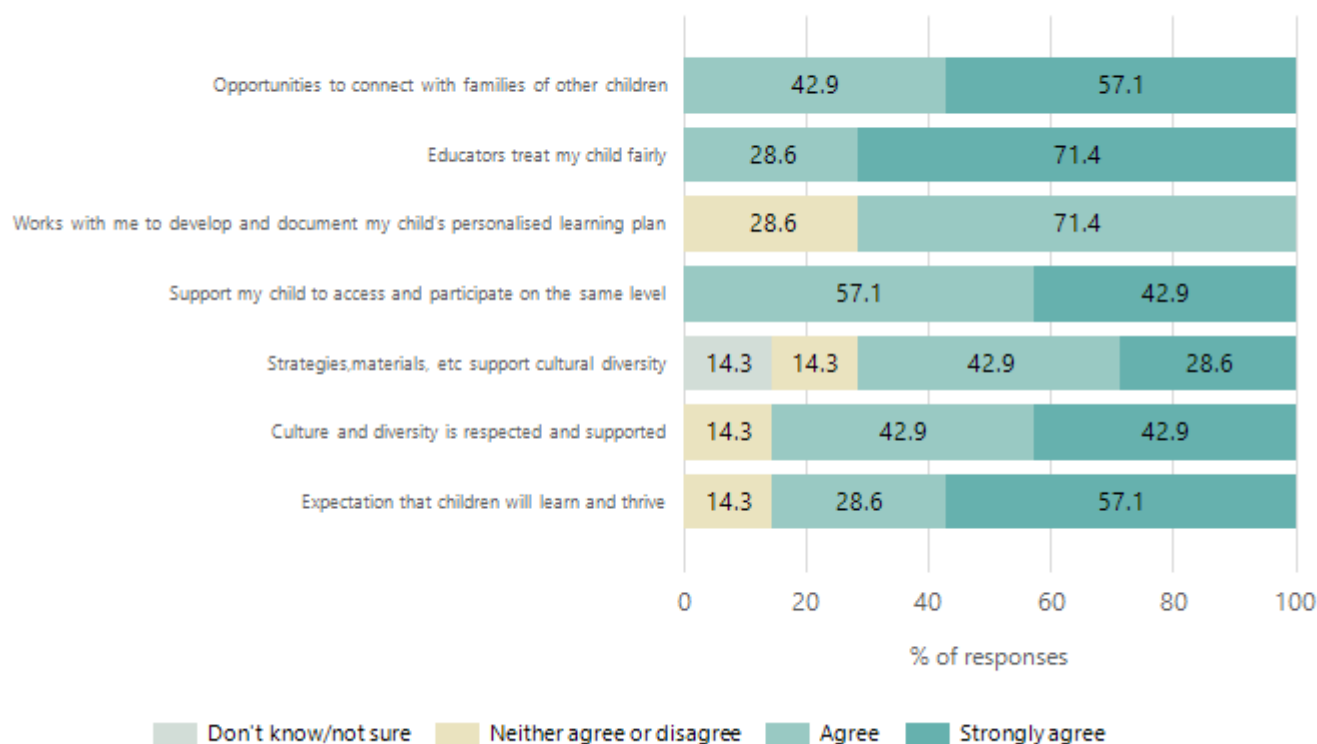
Data Source: 2024 Department for Education Preschool Family Opinions Survey, Term 3 2024.

Safety, Health and Wellbeing



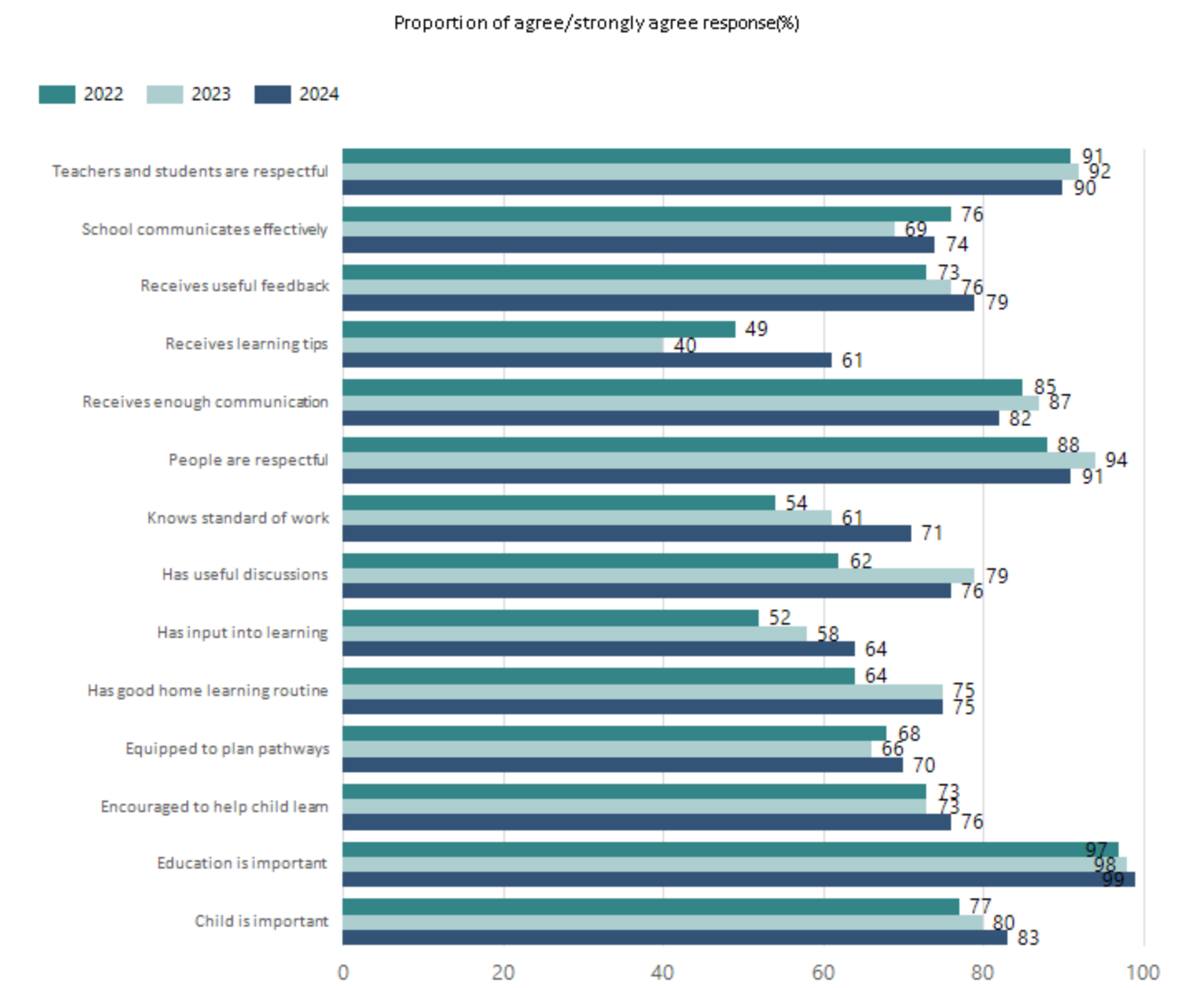
Data Source: 2024 Department for Education Preschool Family Opinions Survey, Term 3 2024.

Support and Inclusion



Data Source: 2024 Department for Education Preschool Family Opinions Survey, Term 3 2024.

School Parent Opinion Survey Results



Data Source: 2024 Department for Education Parent Opinions Survey, Term 3 2024.

Destination Schools

Feeder Schools (Site number - Name)	2022	2023	2024
0156 - Goodwood Primary School	95.3%	87.1%	94.1%
9999 - Unknown	3.1%	4.8%	

Note: The data is collected in term 3. It does not reflect actual schools enrolled in by existing preschool children. A blank cell indicates there was no data for students enrolled.

Data Source: Department for Education Destination Data Report, 2024.

Intended Destination

Leave Reason	Number	%
NG - ATTENDING NON-GOV SCHOOL IN SA	4	22.0%
OV - LEFT SA FOR OVERSEAS	1	6.0%
QL - LEFT SA FOR QLD	1	6.0%
TG - TRANSFERRED TO SA GOVERNMENT SCHOOL	11	61.0%
VI - LEFT SA FOR VIC	1	6.0%

Data Source: Department for Education Destination Data Report, 2024. Data extract term 3 2024. Data shows recorded destinations for students that left the school in the previous year. Data is uploaded by schools in term 3 and may not reflect final or total figures at time of report creation.

Highest Qualifications held by the teaching workforce and workforce composition

All teachers at this school are qualified and registered with the SA Teachers Registration Board.

Qualification Level	Number of Qualifications
Bachelor's degrees or Diplomas	25
Postgraduate Qualifications	8

Data Source: Data extracted from Mandatory Workforce Information Collections as on the last pay date of June 2024. As self-reported by staff in the system.

Please note: Data includes staff who are Actively employed and on extended paid leave. Please note only the highest qualification of the Teaching staff is reported. Excludes any number of other certifications earned.

Workforce composition including indigenous staff

	Non-Teaching Staff		Teaching Staff	
	Indigenous	Non-Indigenous	Indigenous	Non-Indigenous
Full-Time Equivalents	0.0	11.3	0.2	27.9
Persons	0.0	15.0	1.0	32.0

Data Source: Data extracted from Mandatory Workforce Information Collection as on the last pay date of June 2024.

Please note: Data includes staff who are actively employed and on extended paid leave. "Indigenous category" is self-reported by staff in the system.

Financial Statement

Funding Source	Amount
Grants: State	\$4,327,982
Grants: Commonwealth	\$7,800
Parent Contributions	\$252,420
Fund Raising	\$26,493
Other	\$29,099

Data Source: School supplied data.